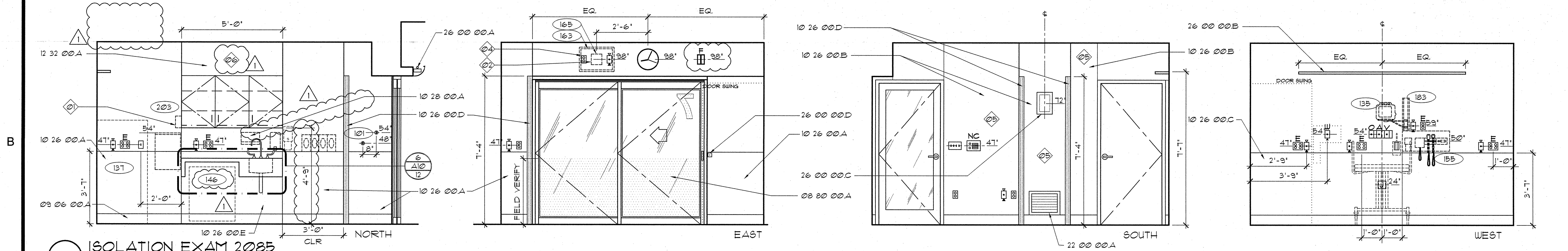
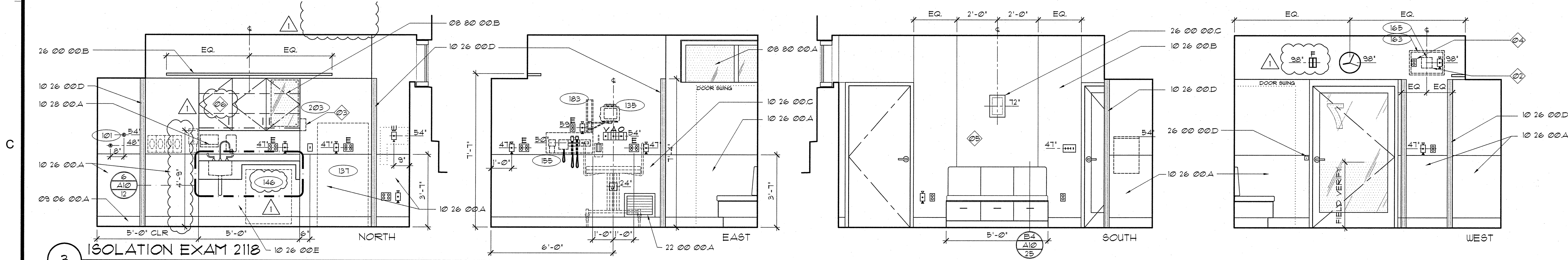


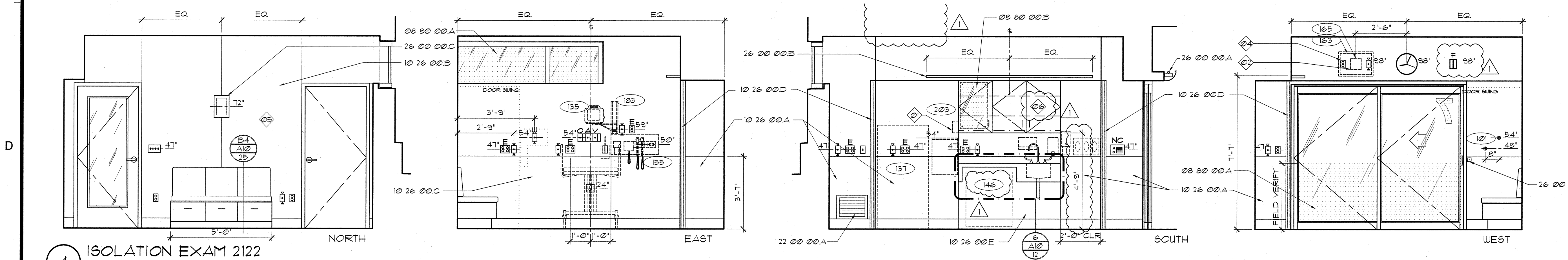
1 ISOLATION EXAM 2082



2 ISOLATION EXAM 2085



3 ISOLATION EXAM 2118



4 ISOLATION EXAM 2122

MATERIAL LEGEND

- Division 08 Openings**
 08 00 00 A CUSTOM FILM AS SCHEDULED IN SECTION 09 06 10
 B 16" X 21" MARKER BOARD - 1/4" TRANSLUCENT GLASS WITH POLISHED EDGES AND 3/8" DIA. STAND OFFS.
- Division 09 Finishes**
 09 06 00 A BASE AS SCHEDULED IN SECTION 09 06 00
- Division 10 Specialties**
 10 21 23 A CUBICLE CURTAIN AND TRACK
 10 26 00 A WALL PROTECTION (WP-01)
 B WALL PROTECTION (WP-04)
 C WALL PROTECTION PANEL (WPP)
 D CORNER GUARD (7'-2" AFF UNLESS OTHERWISE NOTED)
 E WALL PROTECTION (WP-06)
 10 28 00 A PAPER TOWEL DISPENSER (PT-01)
- Division 12 Furnishings**
 12 32 00 A PLASTIC LAMINATE-CLAD SOFFIT FASCIA PANEL
- Division 22 Plumbing**
 22 00 00 A HYAC RETURN OR SUPPLY GRILLE
- Division 26 Electrical**
 26 00 00 A COVE LIGHT AS SCHEDULED
 B WALL-MOUNTED LIGHT FIXTURE
 C WALL SCONCE
 D PANIC BUTTON
- GENERAL NOTES**
 EQUIPMENT ITEM MOUNTED TO SIDE OF CASEWORK.
 INSTALL PER MANUFACTURER'S METAL STUD KIT INSTRUCTIONS.
 DATA CAPTURE MOUNTED INSIDE CASEWORK, SEE DETAIL E3/A10.16
 COORDINATE LOCATION OF POWER AND DATA J-BOX WITH FINAL LOCATION OF TV BRACKET. POWER AND DATA J-BOXES TO BE PLACED BEHIND MONITOR, BUT ASSURED THAT THE DATA AND POWER CONNECTION CAN BE MADE WITHOUT SHARP BENDS IN CONNECTOR LEADS.
 WALL PROTECTION EXTENDS TO FULL HEIGHT.
 UPPER CASEWORK TO BE 1'-8" DEEP

LEGEND

- POSSIBLE LOCATION FOR GEL DISPENSER (FOIC)
 SOAP DISPENSER (FOIC)
 PAPER TOWEL DISPENSER (FOIC)
 GLOVE DISPENSERS (FOIC)
 SHARPS CONTAINER (FOIC)
 NURSE CALL / PULL
 INTERCOM
 CODE CALL
 EQUIPMENT TAG (SEE SECTION 1100)
 NURSE CALL LIGHT
- DUPLEX RECEPTACLE W/ EMERGENCY POWER
 DUPLEX RECEPTACLE
 QUADPLEX RECEPTACLE W/ EMERGENCY POWER
 QUADPLEX RECEPTACLE
 MEDICAL GAS OUTLETS:
 A - MEDICAL AIR
 O - OXYGEN
 V - VACUUM
 SLIDE
 JUNCTION BOX
 LIGHT SWITCH
 TELEPHONE/DATA JACK COMBINED (STANDARD 4 JACKS PER PLATE)
 WALL MOUNTED TELEPHONE
 THERMOSTAT
 24 HR CLOCK
 BATTERY CLOCK
 FIRE STROBE LIGHT

SEC. 12320 CASEWORK LEGEND
 (UNLESS OTHERWISE NOTED)

- NOT TO SCALE
- OPEN CABINET W/ ADJ. SHELVES
 2 ADJ. SHELVES
 UNDERCABINET LIGHT FIXTURE W/P-LAM VALANCE
 UPPER CABINET DOOR WITH PULL
 P-LAM COUNTERTOP AND 4" BACKSPLASH (OR OTHERWISE NOTED)
 BASE CABINET
 DRAWER WITH PULL
 KEYBOARD TRAY F.O.I.C.
 OPEN-KNEE SPACE
 LOCK
 HANGING FILE DRAWER - HF
 LATERAL FILE DRAWER - LF