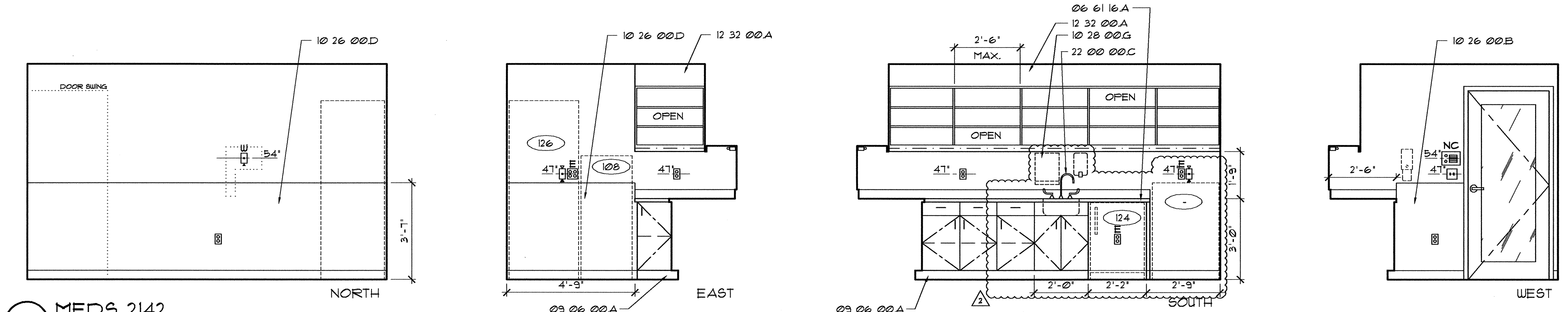
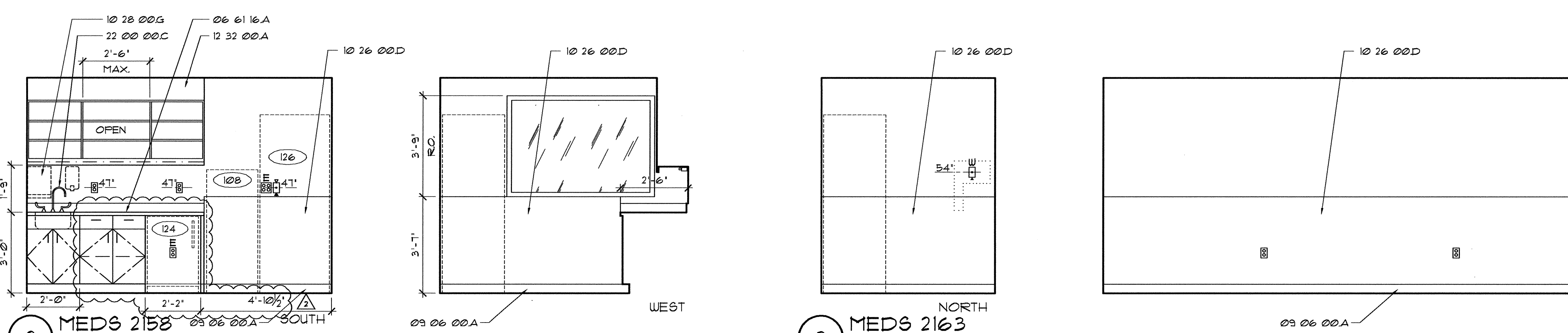


A



1 MEDS 2142

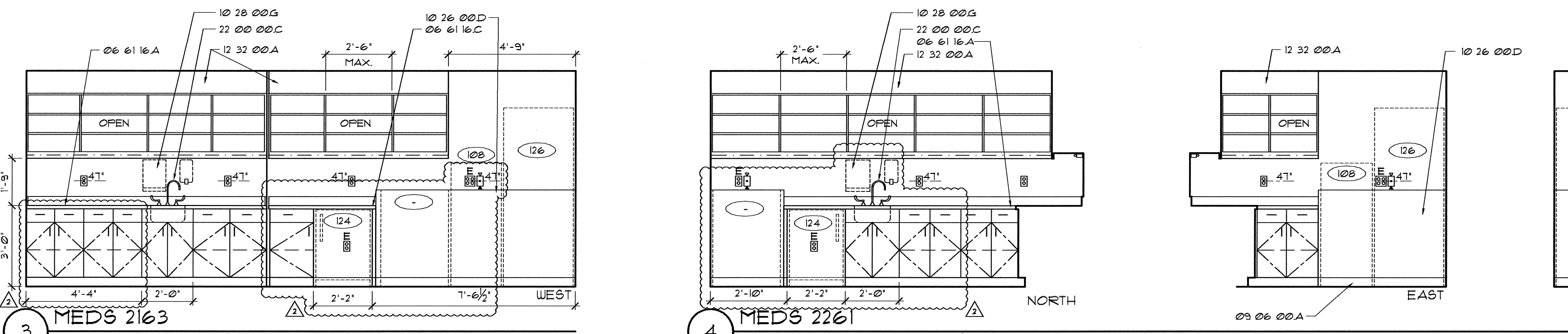
B



2 MEDS 2158

3 MEDS 2163

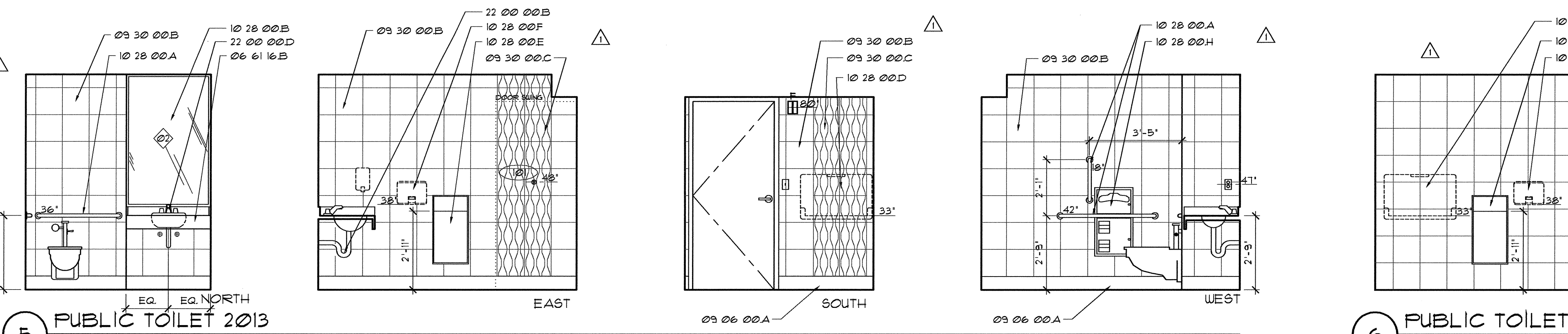
C



3 MEDS 2163

4 MEDS 2261

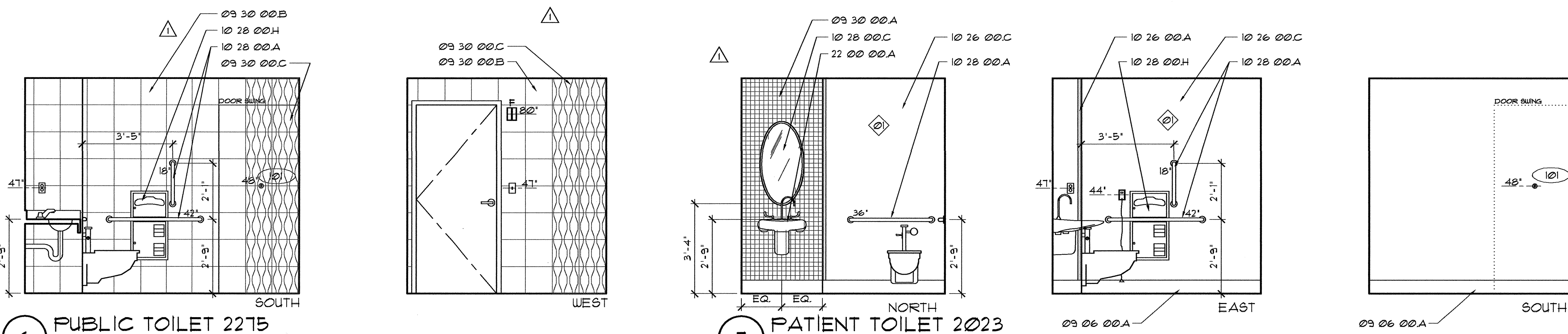
D



5 PUBLIC TOILET 2013
SIM 2043 SIM OFF 2014, 2042

6 PUBLIC TOILET 2275

E



6 PUBLIC TOILET 2275

7 PATIENT TOILET 2023
SIM 2128, 2294 SIM OFF 2034, 2141

MATERIAL LEGEND

Division 06 Wood, Plastics & Composites

- 06 61 16 A SOLID SURFACE COUNTERTOP AND INTEGRAL BACKSPLASH WITH INTEGRAL SINK
- B SOLID SURFACE COUNTERTOP AND INTEGRAL BACKSPLASH WITH INTEGRAL LAVATORY
- C SOLID SURFACE COUNTER AND INTEGRAL BACKSPLASH

Division 09 Finishes

- 09 06 00 A BASE AS SCHEDULED IN SECTION 09 06 00
- 09 30 00 A TILE AS SCHEDULED IN SECTION 09 06 00
- B TILE T-1
- C TILE T-4

Division 10 Specialties

- 10 26 00 A CORNER GUARD (1'-2" AFF UNLESS OTHERWISE NOTED)
- B WALL PROTECTION (WP-01)
- C WALL PROTECTION (WP-02)
- D WALL PROTECTION PANEL (WPP)
- 10 28 00 A STAINLESS STEEL GRAB BAR (SIZE AS NOTED)
- B METAL FRAMED MIRROR (SIZE AS NOTED)
- C OVAL MIRROR
- D BABY CHANGING STATION
- E WASTE RECEPTACLE
- F HAND DRYER
- G PAPER TOWEL DISPENSER (PT-02)
- H RECESSED TOILET PAPER DISPENSER (TP-01)

Division 12 Furnishings

- 12 32 00 A PLASTIC LAMINATE-CLAD SOFFIT FASCIA PANEL

Division 22 Plumbing

- 22 00 00 A WALL-MOUNTED LAVATORY
- B SUPPLY AND DRAIN INSULATION KIT
- C GOOSENECK & WRIST BLADES
- D FAUCET & ELECTRONIC SENSOR

KEY NOTES

- WALL PROTECTION EXTENDS FULL HEIGHT.
- FIELD VERIFY SIZE.

LEGEND

- POSSIBLE LOCATION FOR GEL DISPENSER (FOID)
- SOAP DISPENSER (FOIC)
- PAPER TOWEL DISPENSER (FOIC)
- GLOVE DISPENSERS (FOID)
- SHARPS CONTAINER (FOIC)
- NURSE CALL / FULL
- INTERCOM
- CODE CALL
- EQUIPMENT TAG (SEE SECTION 11000)
- NURSE CALL LIGHT
- DUPLEX RECEPTACLE W/ EMERGENCY POWER
- DUPLEX RECEPTACLE
- QUADPLEX RECEPTACLE W/ EMERGENCY POWER
- QUADPLEX RECEPTACLE
- MEDICAL GAS OUTLETS:
A - MEDICAL AIR
O - OXYGEN
V - VACUUM
- SLIDE
- JUNCTION BOX
- LIGHT SWITCH
- TELEPHONE/DATA JACK COMBINED (STANDARD 4 JACKS PER PLATE)
- WALL MOUNTED TELEPHONE
- THERMOSTAT
- 24 HR CLOCK
- BATTERY CLOCK
- FIRE STROBE LIGHT

SEC. 12320 CASEWORK LEGEND
(UNLESS OTHERWISE NOTED)

- NOT TO SCALE
- OPEN CABINET W/ ADJ. SHELVES
- 2 ADJ. SHELVES
- UNDERCABINET LIGHT FIXTURE W/ LAM VALLANCE
- UPPER CABINET DOOR WITH FULL
- P-LAM COUNTERTOP AND 4" BACKSPLASH (OR OTHERWISE NOTED)
- BASE CABINET
- DRAWER WITH FULL
- KEYBOARD TRAY F.O.I.D.
- OPEN-KNEE SPACE
- LOCK
- HANGING FILE DRAWER - HF
- LATERAL FILE DRAWER - LF

GIFFIN • BOLTE • JURGENS
ARCHITECTS

815 S.W. SECOND AVENUE - PORTLAND, OREGON 97204
(503) 223-0992 www.gbjarch.com FAX (503) 294-3961

REGISTERED ARCHITECT
K. GIFFIN
STATE OF WASHINGTON

MultiCare

EMERGENCY DEPARTMENT & CANCER CENTER EXPANSION

TACOMA, WASHINGTON

CCD 05 01-21-09
CCD 12 05-22-09

Date 09-26-2008
Scale 3/8" = 1'-0"
Drawn By MQ
Job No. 4034

INTERIOR ELEVATIONS

A9
208