

A

B

C

D

E

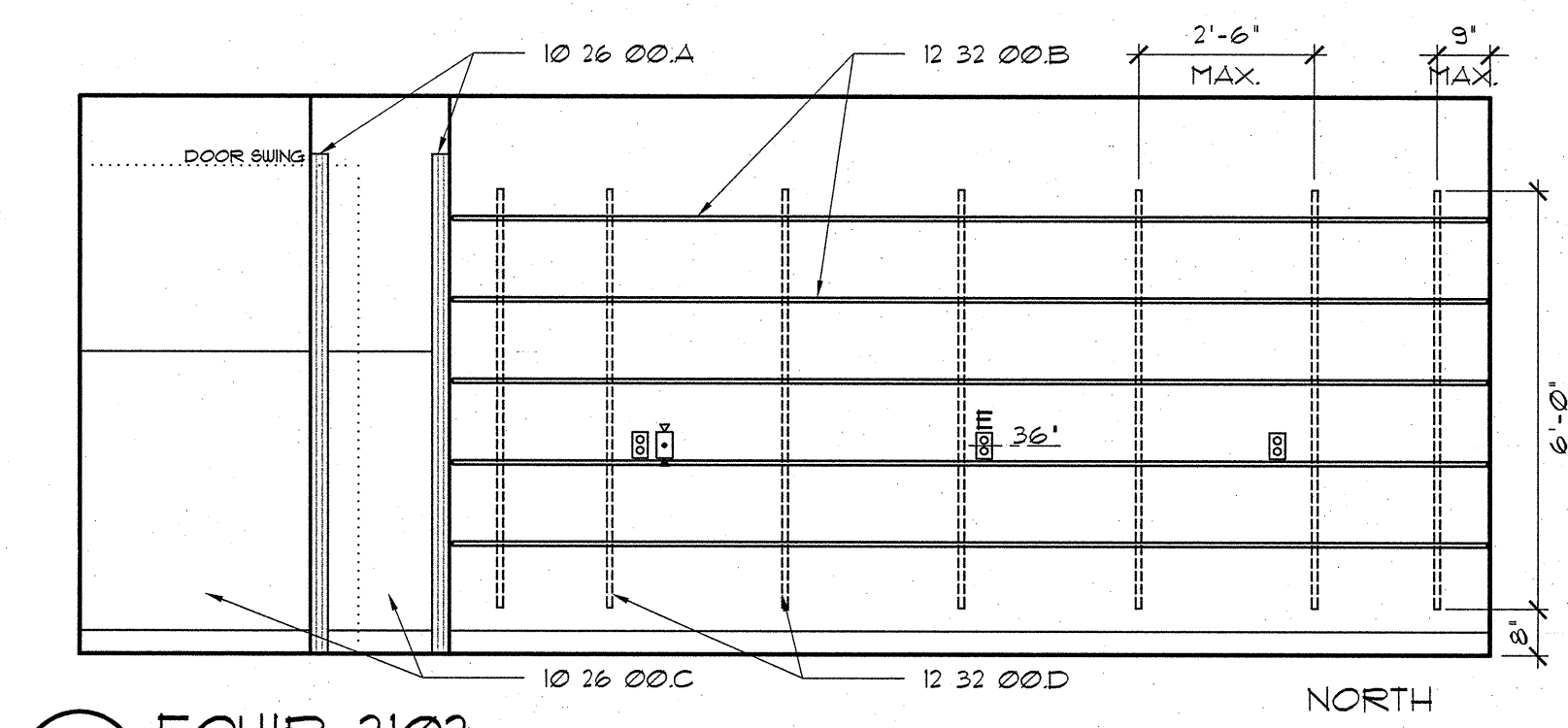
A

B

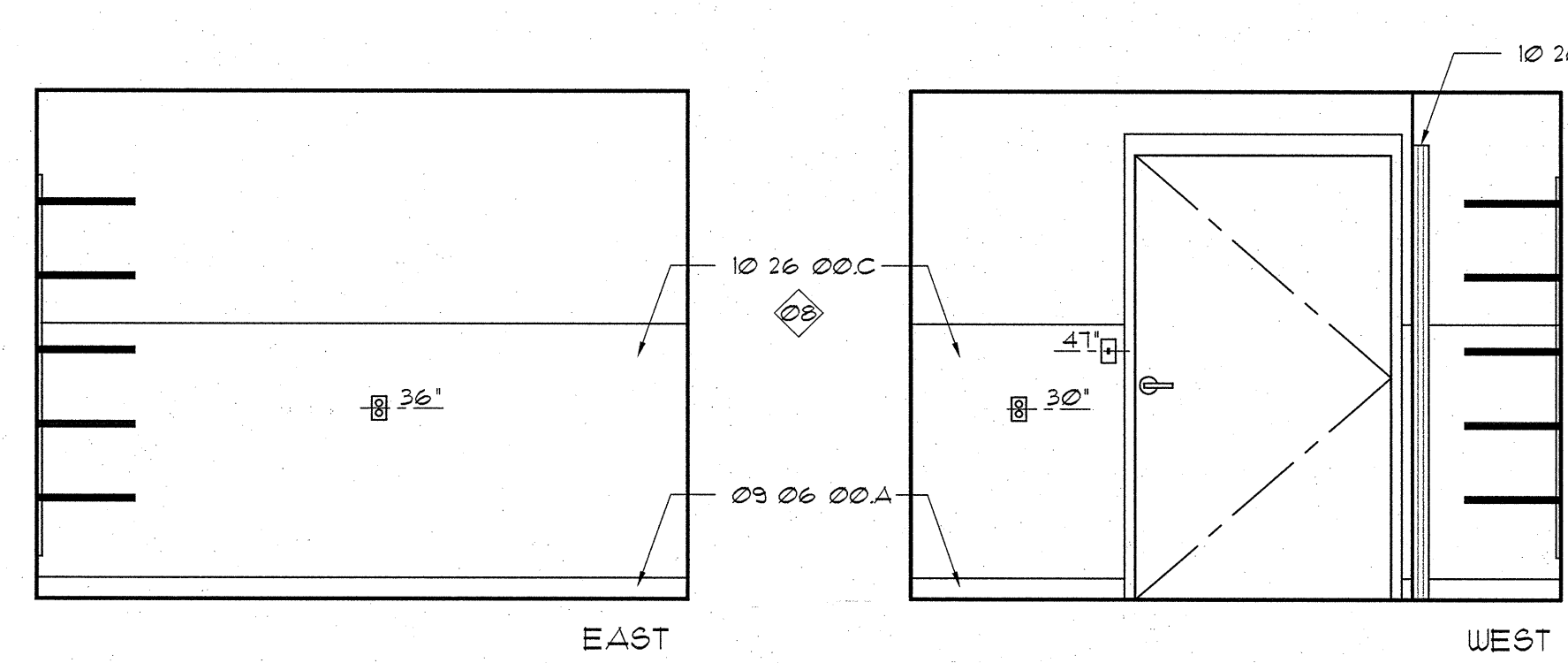
C

D

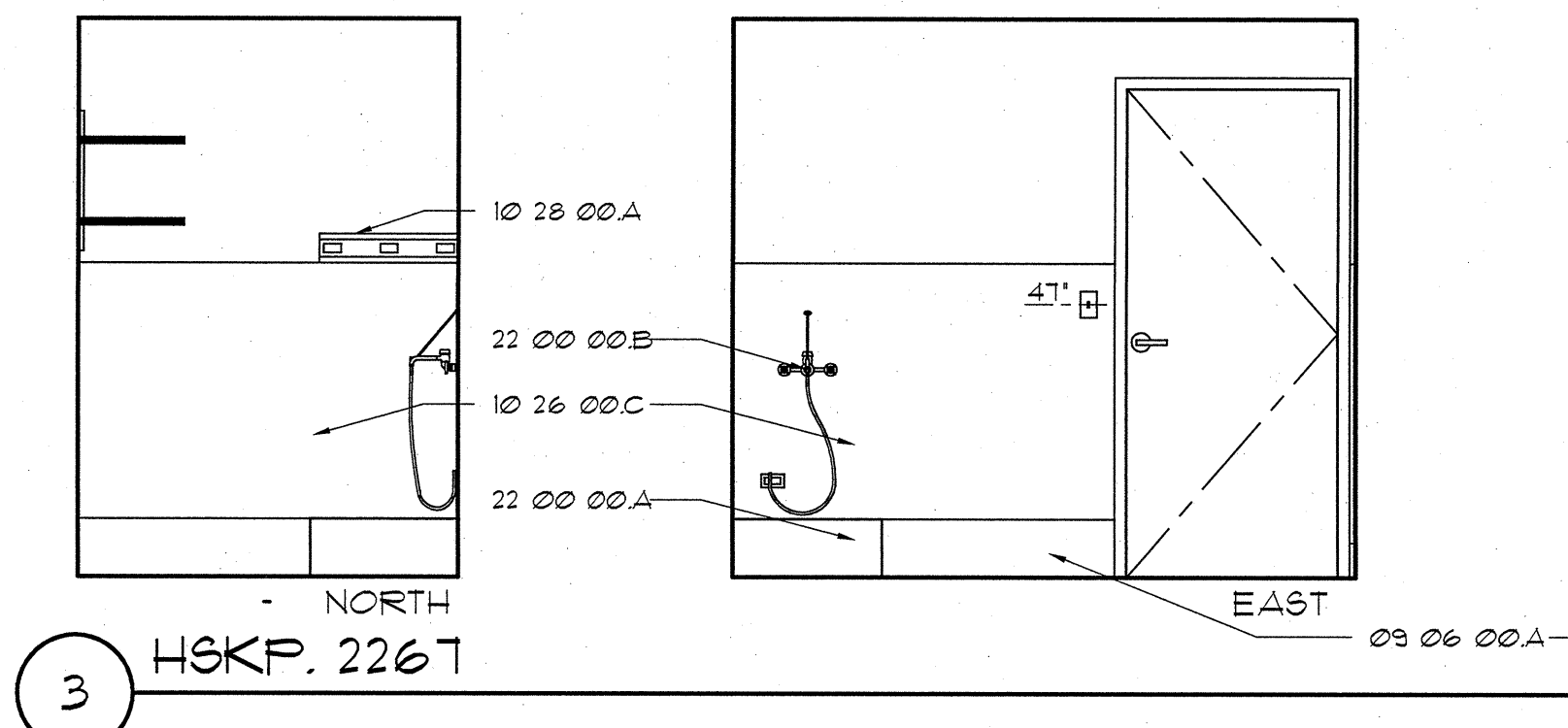
E



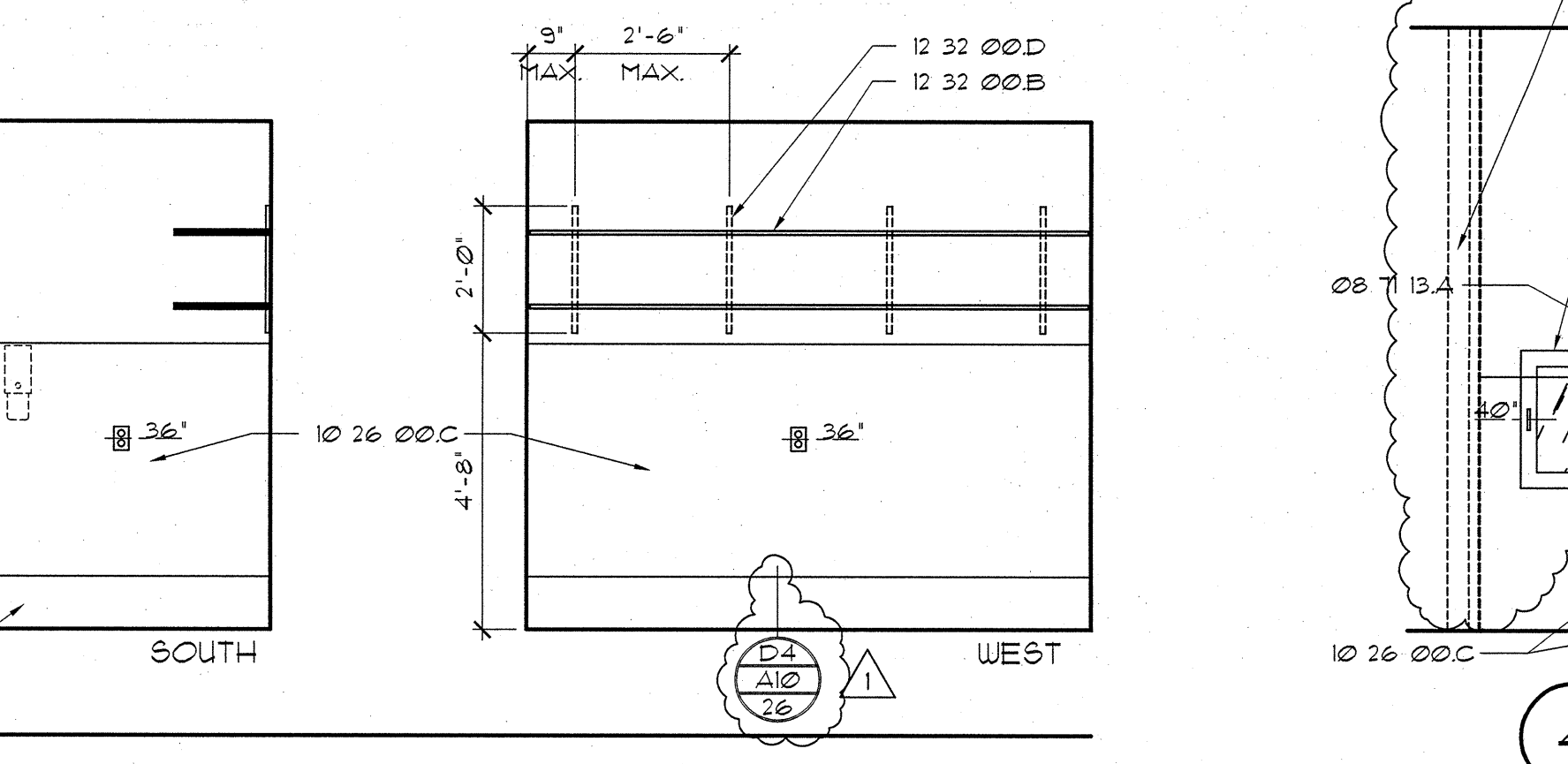
1 EQUIP. 2102



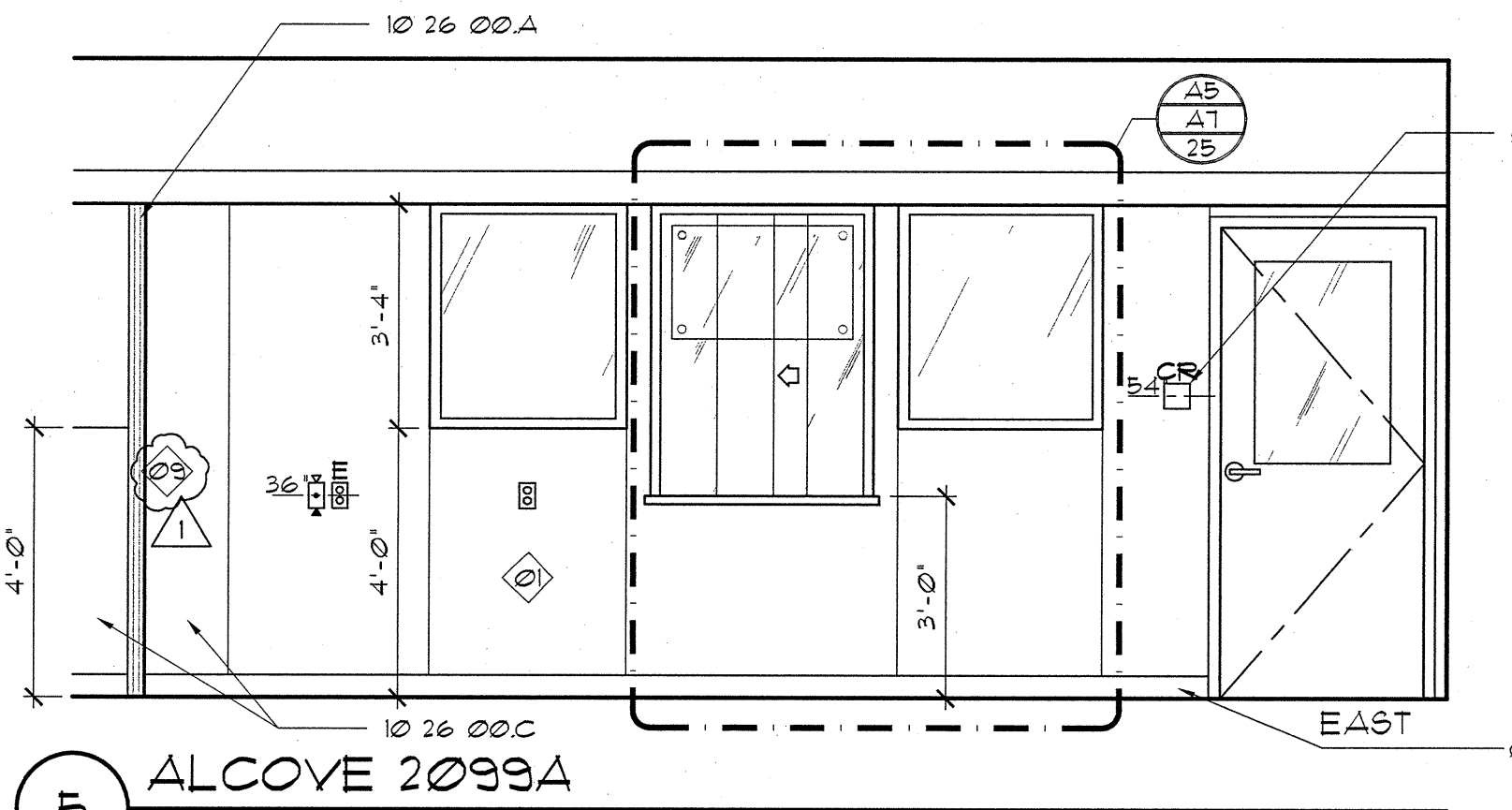
2 HSKP. 2024
91M 2164



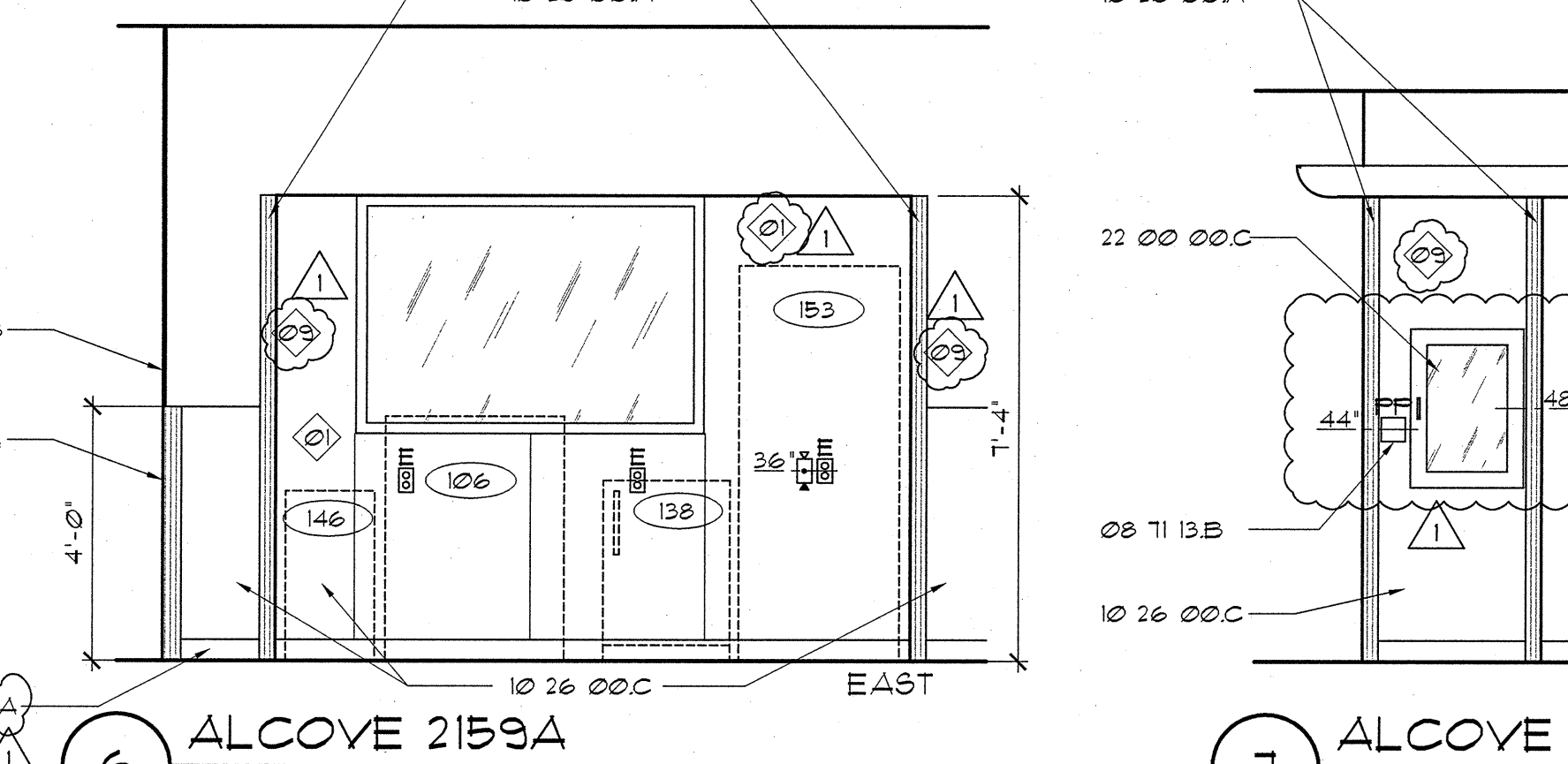
3 HSKP. 2267



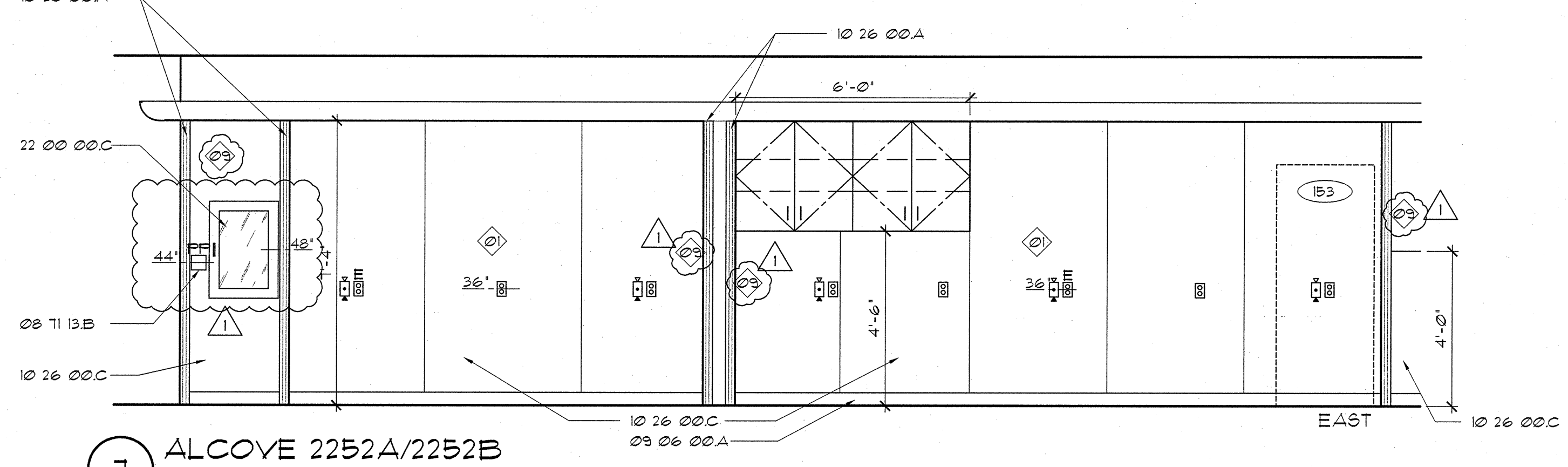
4 ALCOVE 2094A



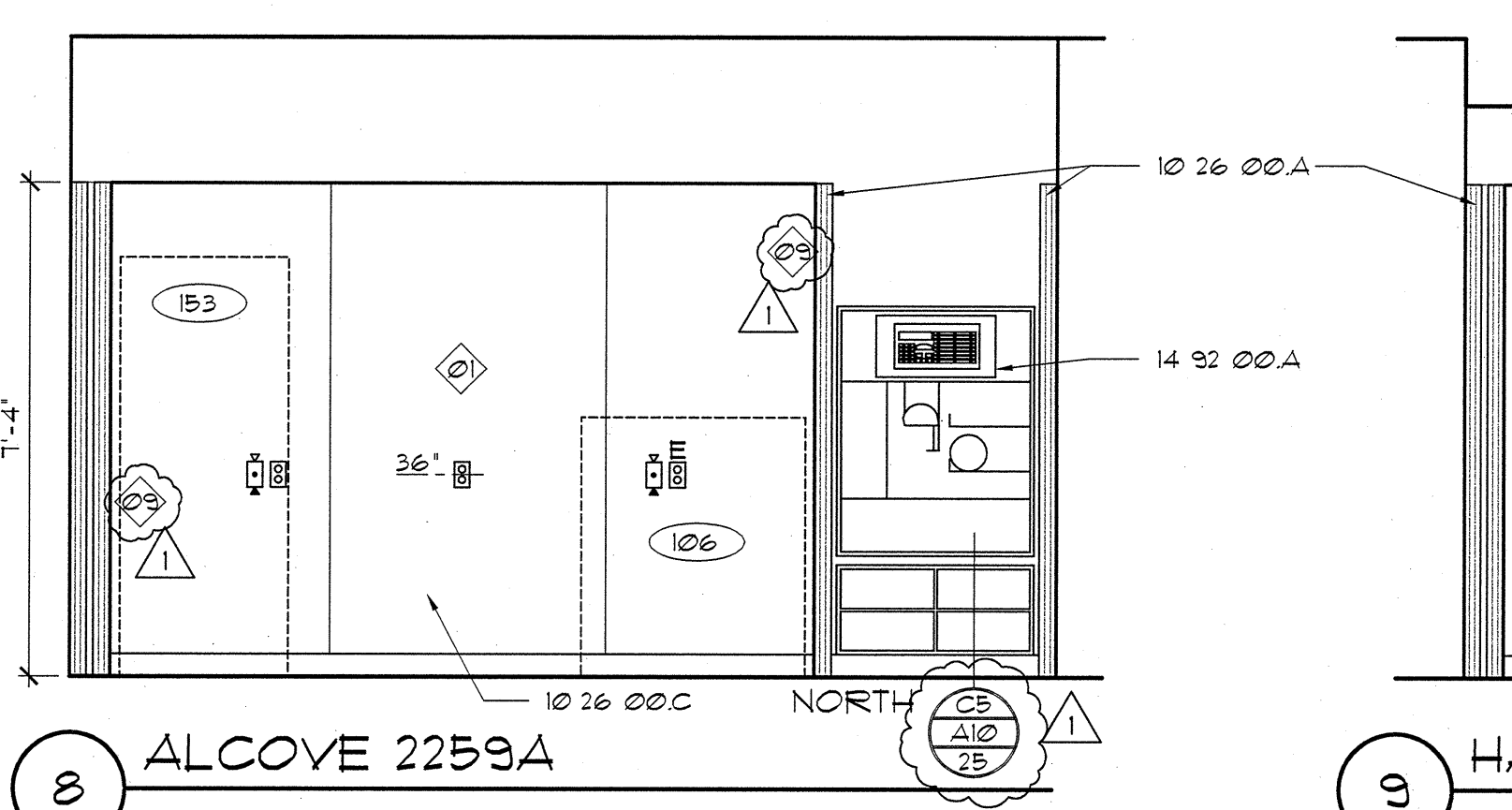
5 ALCOVE 2093A



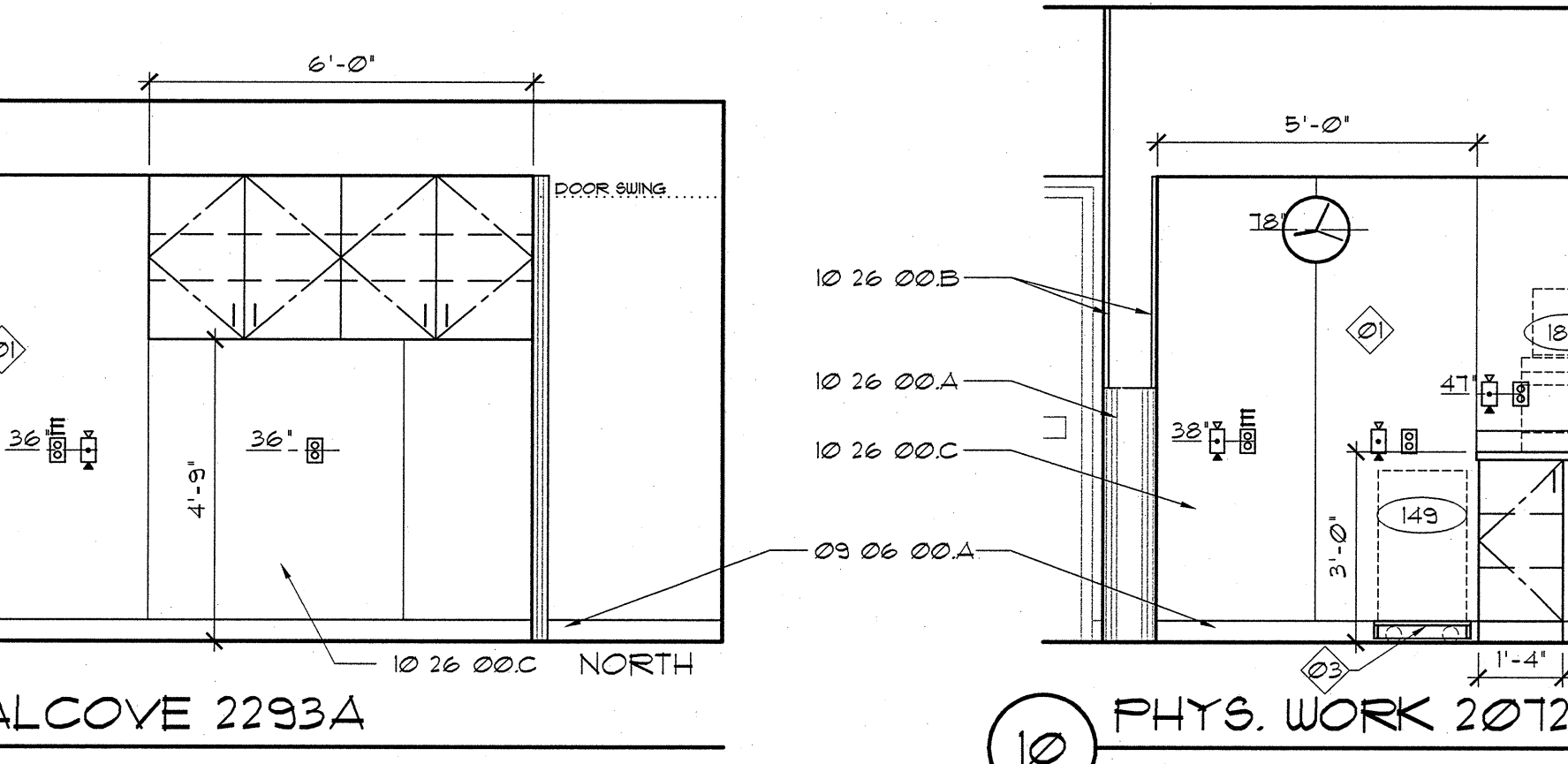
6 ALCOVE 2159A



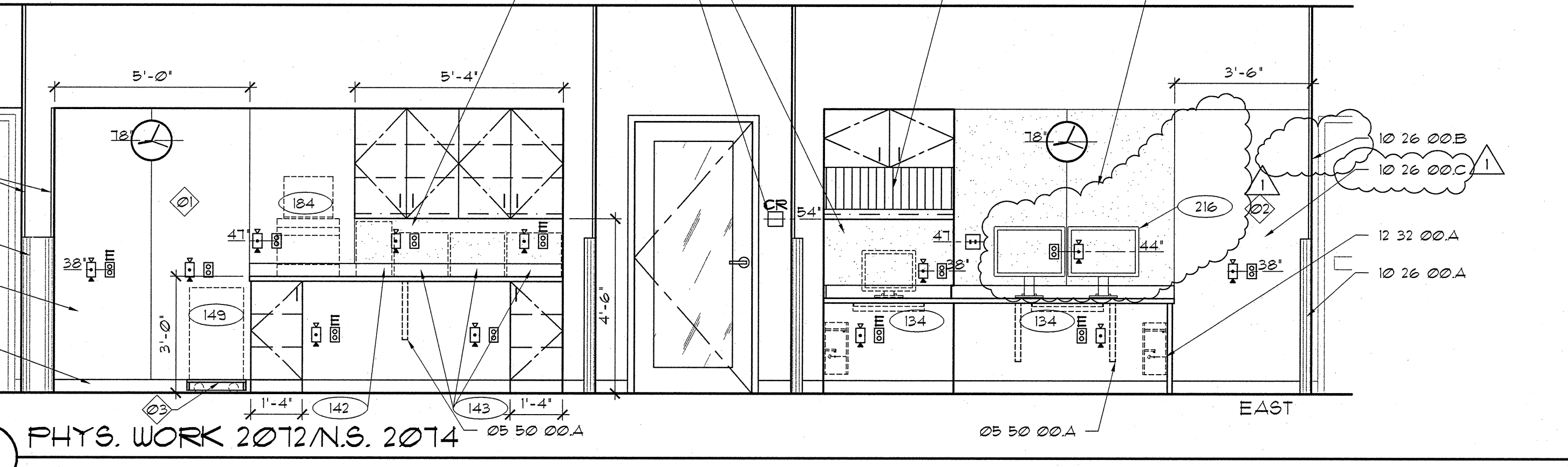
7 ALCOVE 2252A/2252B



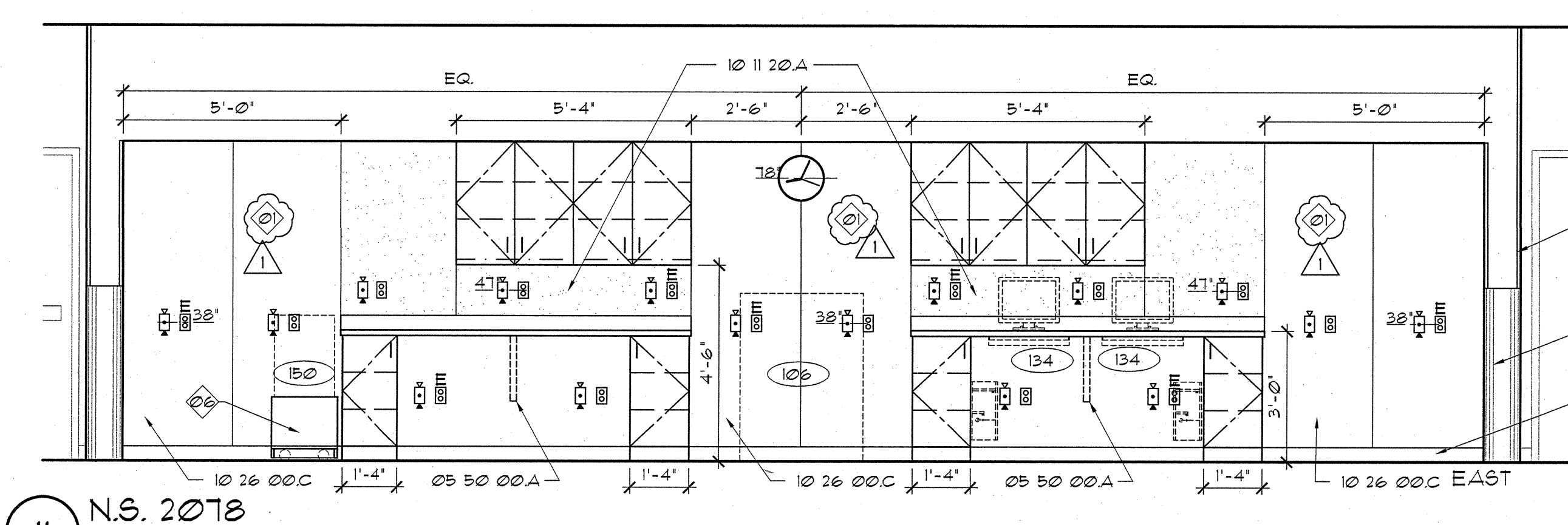
8 ALCOVE 2259A



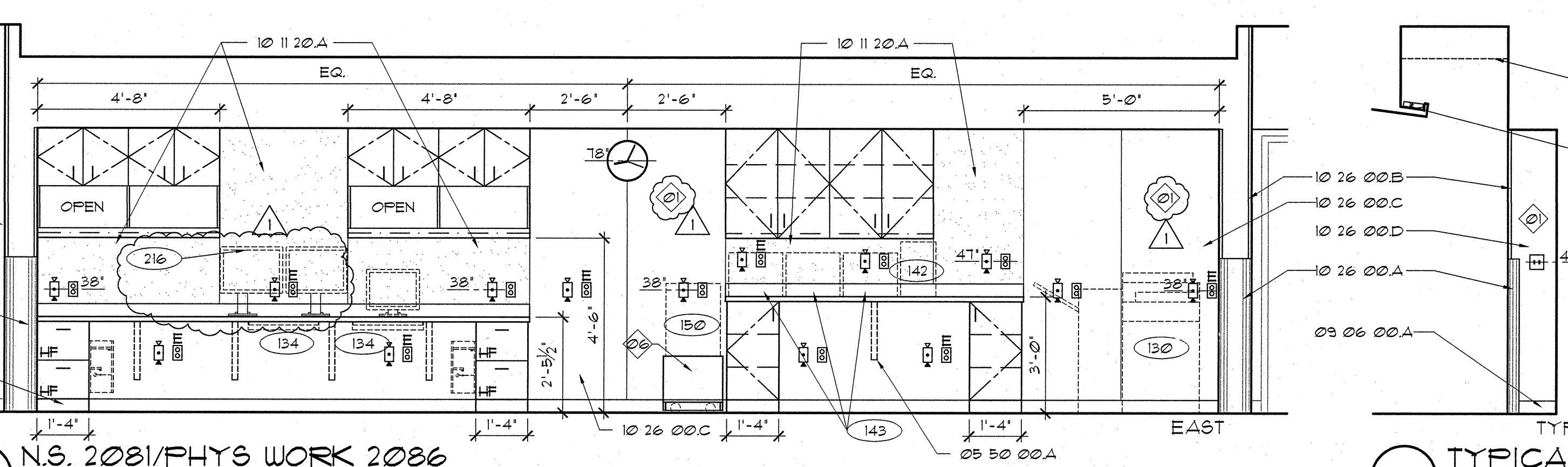
9 HALL/ALCOVE 2293A



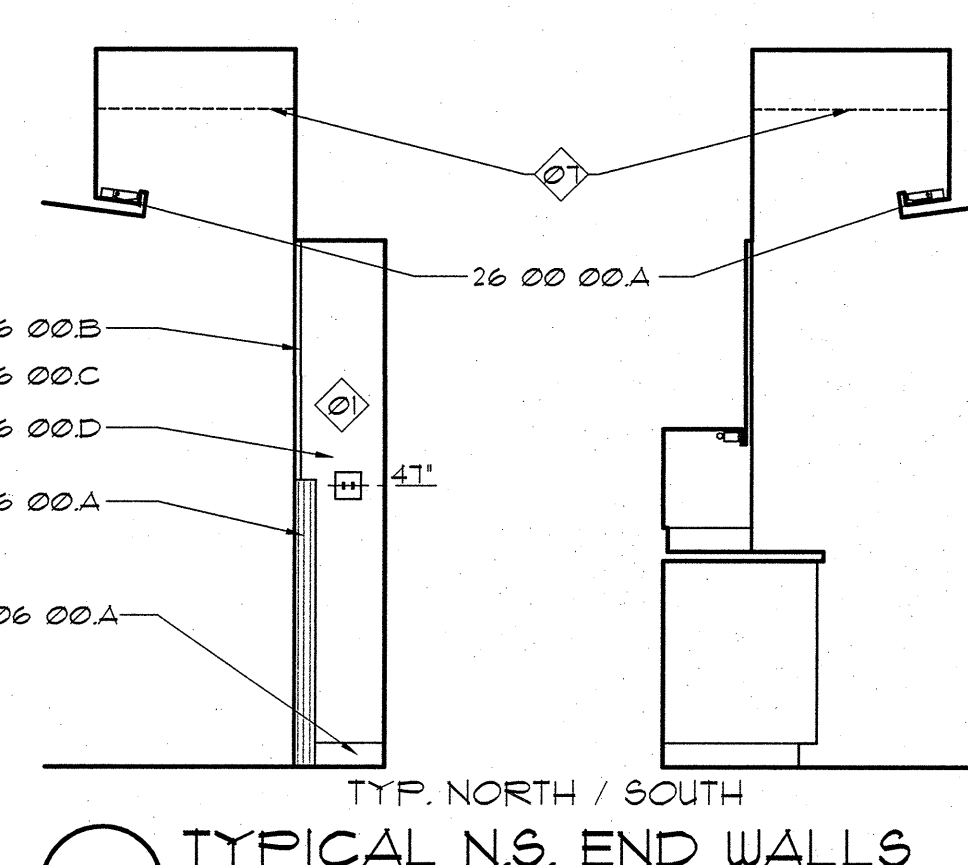
10 PHYS. WORK 2072/N.S. 2074



11 N.S. 2078



12 N.S. 2081/PHYS WORK 2086



13 TYPICAL N.S. END WALLS

MATERIAL LEGEND

- Division 05 Metals
05 50 00. A SURFACE MOUNTED COUNTER SUPPORT BRACKET - SEE DETAIL D6/A10/25
- Division 07 Thermal & Moisture Protection
07 95 10. A SEISMIC JOINT
- Division 08 Openings
08 11 13. A CARD READER
08 11 13. A FISH PLATE
- Division 09 Finishes
09 06 00. A BASE AS SCHEDULED IN SECTION 09 06 00
- Division 10 Specialties
10 11 20. A TACK BOARD
10 26 00. A CORNER GUARD (1'-2" AFF UNLESS OTHERWISE NOTED)
B CORNER GUARD. SEE DETAIL D6/A10/26.
C WALL PROTECTION PANEL (WPP)
D WALL PROTECTION (WP-02)
10 28 00. A MOP RACK - 24"
B MOP RACK - 36"
- Division 12 Furnishings
12 32 00. A 1-1/2" PLASTIC LAMINATE-CLAD END PANEL
B 18" DEEP PLASTIC LAMINATE-CLAD ADJUSTABLE SHELVING
C ACRYLIC VERTICAL FORM SLOTS
D HEAVY-DUTY SHELF SUPPORT BRACKET
- Division 14 Conveying Equipment
14 92 00. A PNEUMATIC TUBE STATION
- Division 22 Plumbing
22 00 00. A SERVICE SINK
B SERVICE SINK FAUCET
C MEDICAL GAS ALARM PANEL
- Division 26 Electrical
26 00 00. A COVE LIGHT AS SCHEDULED

GENERAL NOTES

- 01 WALL PROTECTION EXTENDS FULL HEIGHT.
02 WALL PROTECTION EXTENDS TO 1'-4".
03 OWNER PROVIDED 1" ROLLER BASE.
04 INSTALL PER MANUFACTURER'S METAL STUD KIT INSTRUCTIONS.
05 COORDINATE LOCATION OF POWER AND DATA J-BOX WITH FINAL LOCATION OF TV BRACKET. POWER AND DATA J-BOXES TO BE PLACED BEHIND MONITOR, BUT ASSURED THAT THE DATA AND POWER CONNECTION CAN BE MADE WITHOUT SHARP BENDS IN CONNECTOR LEADS.
06 OWNER PROVIDED 18" ROLLER BASE.
07 CEILING HEIGHT AT N.S. 2081 / PHYS. WORK 2086 ONLY.
08 WALL PROTECTION ON SOUTH WALL.
09 WALL PROTECTION (WPP) EXTEND FULL HEIGHT ON SIDEWALL.

LEGEND

- POSSIBLE LOCATION FOR GEL DISPENSER (FOIC)
SOAP DISPENSER (FOIC)
PAPER TOWEL DISPENSER (FOIC)
GLOVE DISPENSERS (FOIC)
SHARPS CONTAINER (FOIC)
NURSE CALL / FULL
INTERCOM
CODE CALL
EQUIPMENT TAG (SEE SECTION 1700)
NURSE CALL LIGHT
- DUPLEX RECEPTACLE W/ EMERGENCY POWER (FOIC)
DUPLEX RECEPTACLE
QUADPLEX RECEPTACLE W/ EMERGENCY POWER
QUADPLEX RECEPTACLE
MEDICAL GAS OUTLETS:
A - MEDICAL AIR
O - OXYGEN
V - VACUUM
SLIDE
JUNCTION BOX
LIGHT SWITCH
TELEPHONE/DATA JACK COMBINED (STANDARD 4 JACKS PER PLATE)
WALL MOUNTED TELEPHONE
THERMOSTAT
24 HR CLOCK
BATTERY CLOCK
FIRE STROBE LIGHT

SEC. 12320 CASEWORK LEGEND
(UNLESS OTHERWISE NOTED)

- NOT TO SCALE
- OPEN CABINET W/ ADJ. SHELVES
2 ADJ. SHELVES
UNDERCABINET LIGHT FIXTURE W/P-LAM YALANCE
UPPER CABINET DOOR WITH PULL
P-LAM COUNTERTOP AND 4" BACKSPLASH (OR OTHERWISE NOTED)
BASE CABINET
DRAWER WITH PULL
KEYBOARD TRAY F.O.I.C.
OPEN-KNEE SPACE
LOCK
HANGING FILE DRAWER = HF
LATERAL FILE DRAWER = LF