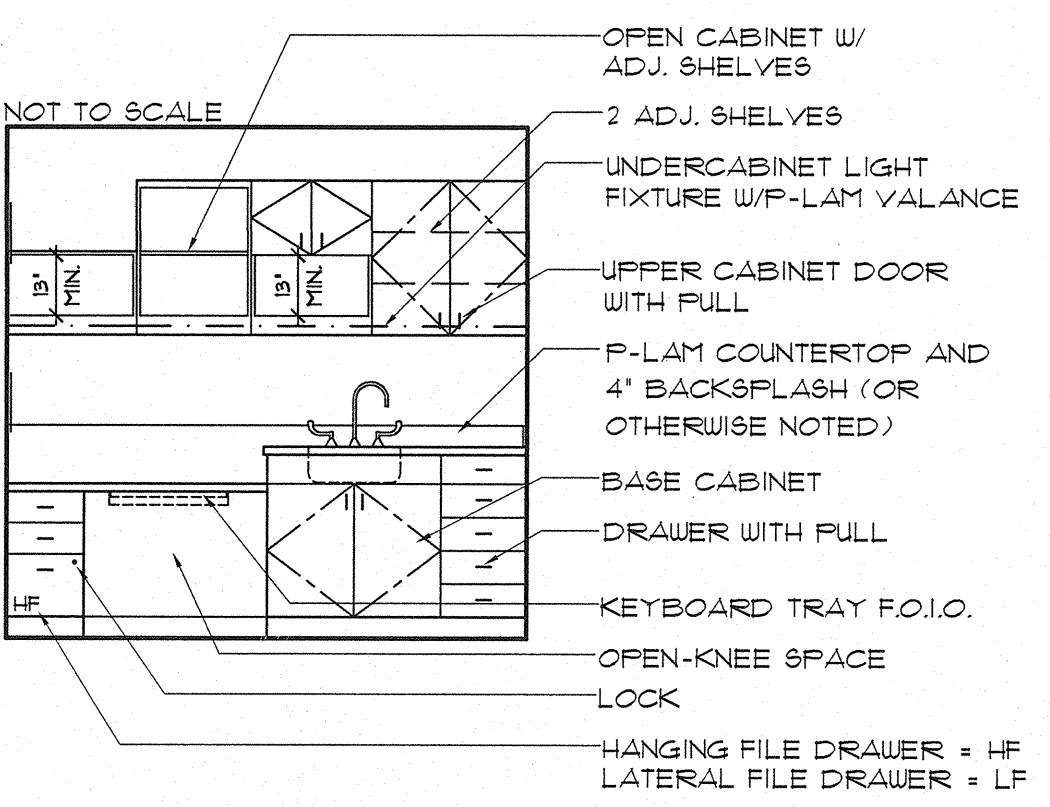


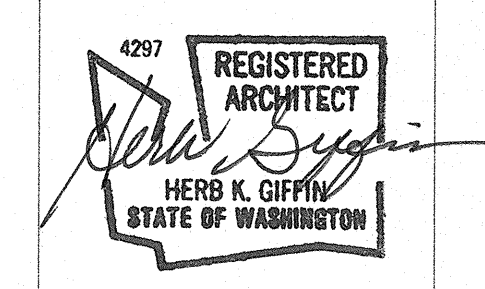
- MATERIAL LEGEND**
- Division 05 Metals**
- 05 50 00 A CONCRETE FILLED STEEL BOLLARD 4" DIA.
- Division 08 Openings**
- 08 11 13 A CARD READER
- Division 09 Finishes**
- 09 06 00 A BASE AS SCHEDULED IN SECTION 09 06 00
- 09 30 00 A TILE AS SCHEDULED IN SECTION 09 06 00
- 09 11 00 A WALL PANEL SYSTEM
- Division 10 Specialties**
- 10 26 00 A CORNER GUARD (1'-2" AFF UNLESS OTHERWISE NOTED)
- 10 51 26 A PHENOLIC LOCKERS (PHL-01)
- 10 51 26 B PHENOLIC LOCKERS (PHL-02)
- Division 26 Electrical**
- 26 00 00 A COVE LIGHT AS SCHEDULED
- GENERAL NOTES**
- WALL PROTECTION EXTEND FULL HEIGHT.

- LEGEND**
- POSSIBLE LOCATION FOR GEL DISPENSER (FOIC)
- SOAP DISPENSER (FOIC)
- PAPER TOWEL DISPENSER (FOIC)
- GLOVE DISPENSERS (FOIC)
- SHARPS CONTAINER (FOIC)
- NURSE CALL / PULL
- INTERCOM
- CODE CALL
- EQUIPMENT TAG (SEE SECTION 1100)
- NURSE CALL LIGHT
- DUPLEX RECEPTACLE W/ EMERGENCY POWER
- DUPLEX RECEPTACLE
- QUADPLEX RECEPTABLE W/ EMERGENCY POWER
- QUADPLEX RECEPTACLE
- MEDICAL GAS OUTLETS:
A - MEDICAL AIR
O - OXYGEN
V - VACUUM
- SLIDE
- JUNCTION BOX
- LIGHT SWITCH
- TELEPHONE/DATA JACK COMBINED (STANDARD 4 JACKS PER PLATE)
- WALL MOUNTED TELEPHONE
- THERMOSTAT
- 24 HR CLOCK
- BATTERY CLOCK
- FIRE STROBE LIGHT



GIFFIN • BOLTE • JURGENS
ARCHITECTS

815 S.W. SECOND AVENUE • PORTLAND, OREGON 97204
(503) 223-0992 www.gbjarch.com FAX (503) 294-3961



MultiCare

EMERGENCY DEPARTMENT & CANCER CENTER EXPANSION

TACOMA, WASHINGTON

CCD 05	01-21-09				

Date 09-26-2008
Scale 3/8" = 1'-0"
Drawn By MQ
Job No. 4034

INTERIOR ELEVATIONS

A9
217