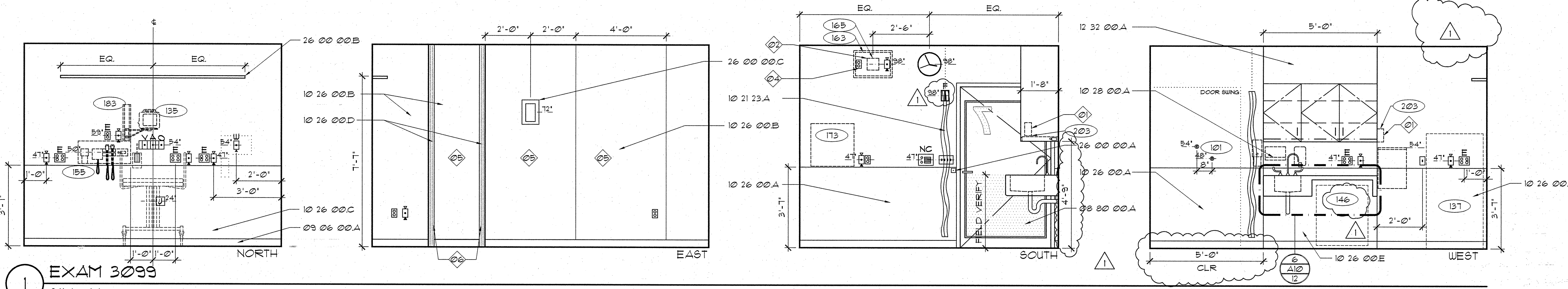
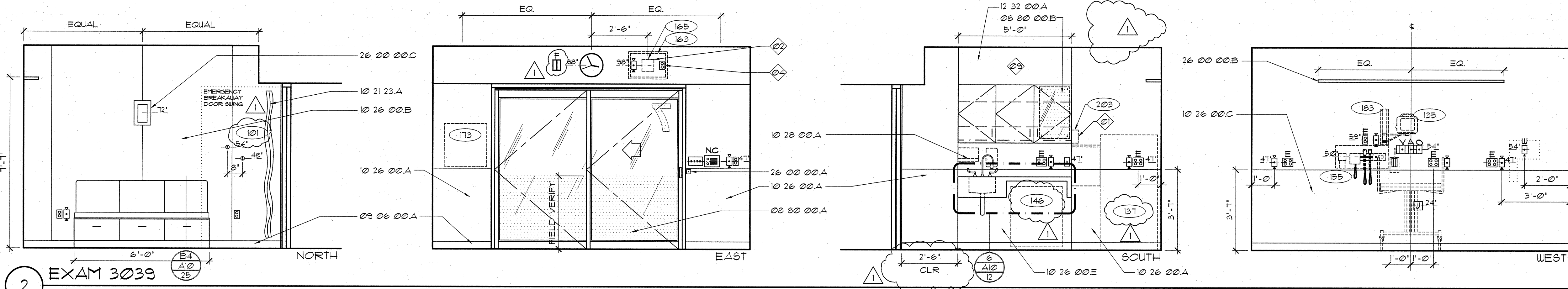


A



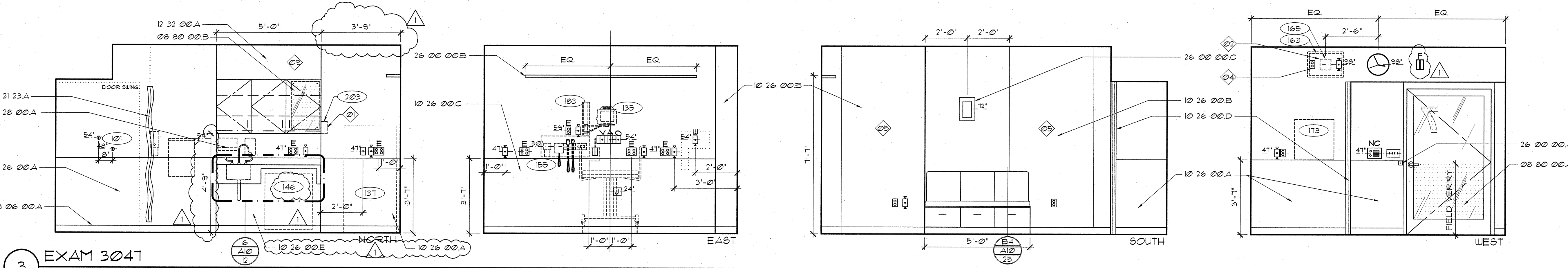
1 EXAM 3099  
SIM 3149

B



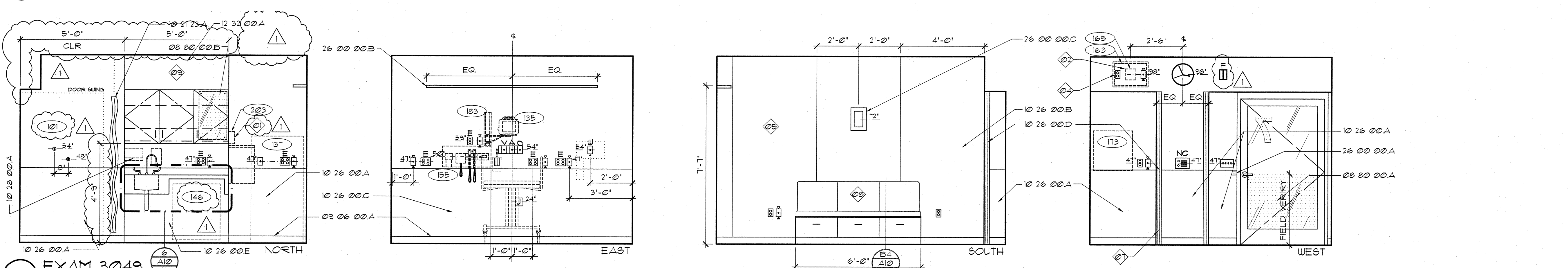
2 EXAM 3039  
SIM 25

C



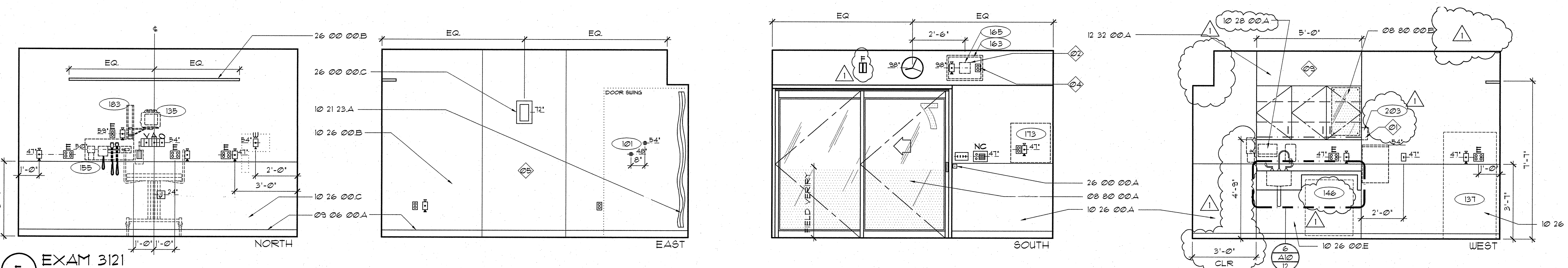
3 EXAM 3041  
SIM 15

D



4 EXAM 3049  
SIM OFF 3048

E



5 EXAM 3121  
SIM OFF 3140

MATERIAL LEGEND

- Division 08 Openings**
- 08 00 00 A CUSTOM FILM AS SCHEDULED IN SECTION 08 06 10
  - B 16" X 21" MARKER BOARD - 1/4" TRANSLUCENT GLASS WITH POLISHED EDGES AND 3/8" DIA. STAND OFFS.
- Division 09 Finishes**
- 09 06 00 A BASE AS SCHEDULED IN SECTION 09 06 00
- Division 10 Specialties**
- 10 21 23 A CUBICAL CURTAIN AND TRACK
  - 10 26 00 A WALL PROTECTION (WP-01)
  - B WALL PROTECTION PANEL (WPP)
  - C CORNER GUARD (T-2) AFF UNLESS OTHERWISE NOTED
  - D CORNER GUARD (T-2) AFF UNLESS OTHERWISE NOTED
  - E WALL PROTECTION (WP-06)
  - 10 28 00 A PAPER TOWEL DISPENSER (PT-01)
- Division 12 Furnishings**
- 12 32 00 A PLASTIC LAMINATE-CLAD SOFFIT FASCIA PANEL
- Division 26 Electrical**
- 26 00 00 A FANIC BUTTON
  - B WALL-MOUNTED LIGHT FIXTURE
  - C WALL SCONCE

GENERAL NOTES

- 1 EQUIPMENT ITEM MOUNTED TO SIDE OF CASEWORK.
- 2 INSTALL PER MANUFACTURER'S METAL STUD KIT INSTRUCTIONS.
- 3 NOT USED
- 4 COORDINATE LOCATION OF POWER AND DATA J-BOX WITH FINAL LOCATION OF TV BRACKET. POWER AND DATA J-BOXES TO BE PLACED BEHIND MONITOR, BUT ASSURE THAT THE DATA AND POWER CONNECTION CAN BE MADE WITHOUT SHARP BENDS IN CONNECTOR LEADS.
- 5 WALL PROTECTION EXTENDS FULL HEIGHT.
- 6 PROVIDE WALL PROTECTION WP-04 FULL HEIGHT ON SIDE WALL.
- 7 PROVIDE WALL PROTECTION WP-01 ON SIDE WALL TO 3'-1" MAX.
- 8 BENCH IS ONLY 5'-0" IN 4048 AND SHOULD ALIGN W/ COLUMN.
- 9 UPPER CASEWORK TO BE 1'-8" DEEP.

LEGEND

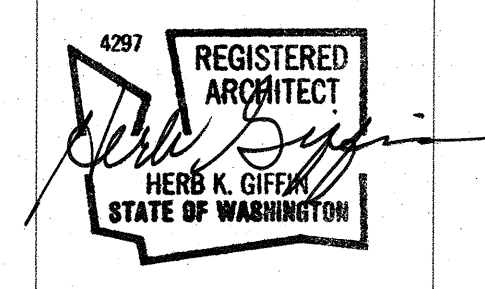
- POSSIBLE LOCATION FOR GEL DISPENSER (FOIC)
- SOAP DISPENSER (FOIC)
- PAPER TOWEL DISPENSER (FOIC)
- GLOVE DISPENSERS (FOIC)
- SHARPS CONTAINER (FOIC)
- NURSE CALL / FULL
- INTERCOM
- CODE CALL
- EQUIPMENT TAG (SEE SECTION 17100)
- DUPLEX RECEPTACLE W/ EMERGENCY POWER
- DUPLEX RECEPTACLE
- QUADPLEX RECEPTACLE W/ EMERGENCY POWER
- QUADPLEX RECEPTACLE
- MEDICAL GAS OUTLETS:
  - A - MEDICAL AIR
  - O - OXYGEN
  - V - VACUUM
- SLIDE
- JUNCTION BOX
- LIGHT SWITCH
- TELEPHONE/DATA JACK COMBINED (STANDARD 4 JACKS PER PLATE)
- WALL MOUNTED TELEPHONE
- THERMOSTAT
- 24 HR CLOCK
- BATTERY CLOCK
- FIRE STROBE LIGHT

SEC. 12320 CASEWORK LEGEND

- (UNLESS OTHERWISE NOTED)
- OPEN CABINET W/ ADJ. SHELVES
  - 2 ADJ. SHELVES
  - UNDERCABINET LIGHT FIXTURE W/P-LAM VALANCE
  - UPPER CABINET DOOR WITH FULL
  - P-LAM COUNTERTOP AND 4" BACKSPASH (OR OTHERWISE NOTED)
  - BASE CABINET
  - DRAWER WITH FULL
  - KEYBOARD TRAY F.O.I.O.
  - OPEN-KNEE SPACE
  - LOCK
  - HANGING FILE DRAWER = HF
  - LATERAL FILE DRAWER = LF

GIFFIN • BOLTE • JURGENS  
ARCHITECTS

815 S.W. SECOND AVENUE - PORTLAND, OREGON 97204  
(503) 223-0992 www.gbjarch.com FAX (503) 294-3961



EMERGENCY DEPARTMENT & CANCER CENTER EXPANSION



TACOMA, WASHINGTON

CCD 05 01-21-09

Date 09-26-2008  
Scale 3/8" = 1'-0"  
Drawn By MQ  
Job No. 4034

INTERIOR ELEVATIONS

A9  
302