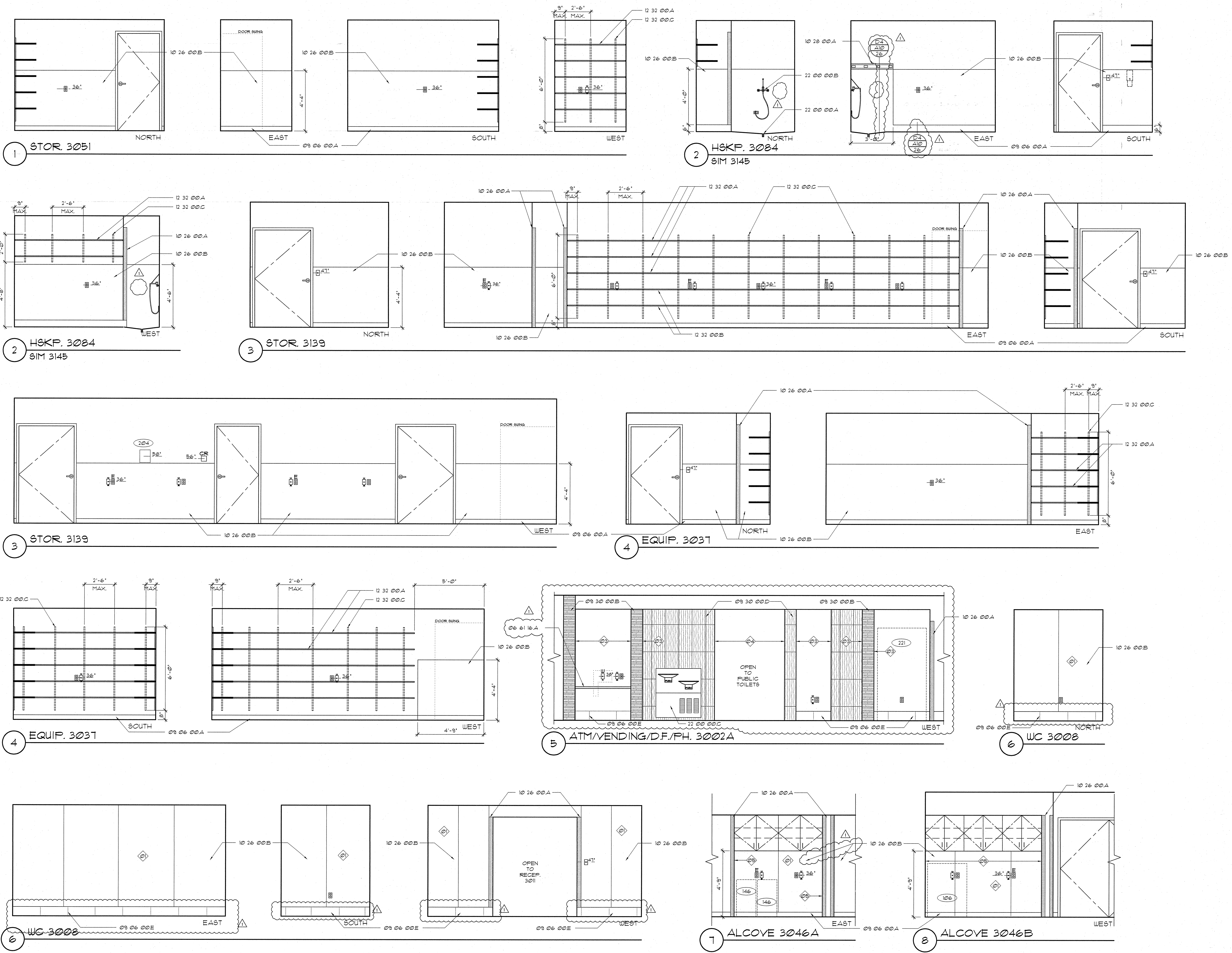


A
B
C
D
E



MATERIAL LEGEND

Division 06 Wood, Plastic & Composites
06 61 16 A SOLID SURFACE TRANSACTION SHELF
Division 09 Finishes
09 06 00 A BASE AS SCHEDULED IN SECTION 09 06 00
09 30 00 A TILE AS SCHEDULED IN SECTION 09 06 00
B TILE T-03
C TILE T-10
D TILE T-12
E TILE T-13

Division 10 Specialties
10 26 00 A CORNER GUARD (1'-2" AFF UNLESS OTHERWISE NOTED)
B WALL PROTECTION PANEL (WPP)
10 28 00 A MOP RACK - 36"

Division 12 Furnishings
12 32 00 A 18" DEEP PLASTIC LAMINATE-CLAD ADJUSTABLE SHELVING
B 22" DEEP PLASTIC LAMINATE-CLAD ADJUSTABLE SHELVING
C HEAVY-DUTY SHELF SUPPORT BRACKET

Division 22 Plumbing
22 00 00 A FLOOR DRAIN
B SERVICE SINK FAUCET
C ELECTRIC WATER COOLER

GENERAL NOTES
1 WALL PROTECTION EXTENDS FULL HEIGHT.
2 NOT USED
3 PROVIDE TILE ON SIDE WALL.
4 PROVIDE TILE ON SIDE WALL AND CONTINUE BEHIND PUBLIC TOILET DOORS.
5 PROVIDE WALL PROTECTION FULL HEIGHT ON SIDE WALLS.

LEGEND

POSSIBLE LOCATION FOR GEL DISPENSER (FOIC)
SOAP DISPENSER (FOIC)
PAPER TOWEL DISPENSER (FOIC)
GLOVE DISPENSERS (FOIC)
SHARPS CONTAINER (FOIC)
NURSE CALL / FULL
INTERCOM
CODE CALL
EQUIPMENT TAG (SEE SECTION 17100)
NURSE CALL LIGHT

DUPLEX RECEPTACLE W/ EMERGENCY POWER
DUPLEX RECEPTACLE
QUADPLEX RECEPTACLE W/ EMERGENCY POWER
QUADPLEX RECEPTACLE
MEDICAL GAS OUTLETS:
A - MEDICAL AIR
O - OXYGEN
V - VACUUM
SLIDE
JUNCTION BOX
LIGHT SWITCH
TELEPHONE/DATA JACK COMBINED (STANDARD 4 JACKS PER PLATE)
WALL MOUNTED TELEPHONE
THERMOSTAT
24 HR CLOCK
BATTERY CLOCK
FIRE STROBE LIGHT

SEC. 12320 CASEWORK LEGEND
(UNLESS OTHERWISE NOTED)

NOT TO SCALE

OPEN CABINET W/ ADJ. SHELVES
2 ADJ. SHELVES
UNDERCABINET LIGHT FIXTURE W/P-LAM VALANCE
UPPER CABINET DOOR WITH PULL
P-LAM COUNTERTOP AND 4" BACKSPASH (OR OTHERWISE NOTED)
BASE CABINET
DRAWER WITH PULL
KEYBOARD TRAY F.O.I.O.
OPEN-KNEE SPACE
LOCK
HANGING FILE DRAWER = HF
LATERAL FILE DRAWER = LF