

A

B

C

D

E

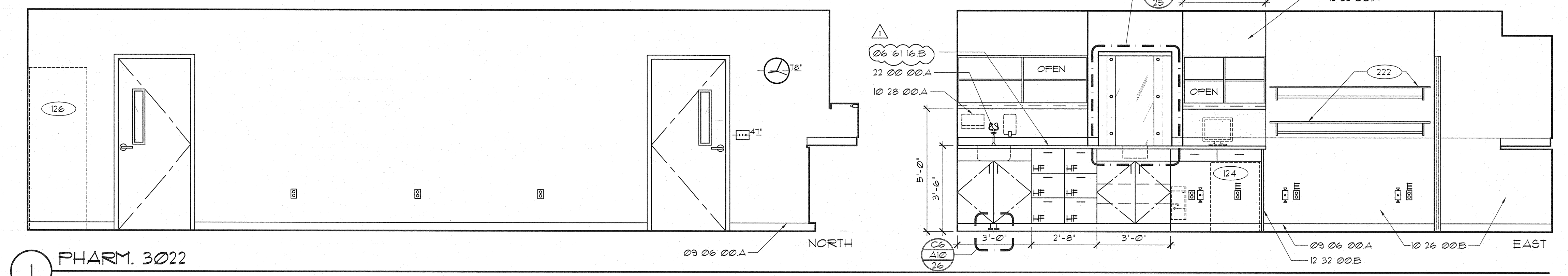
A

B

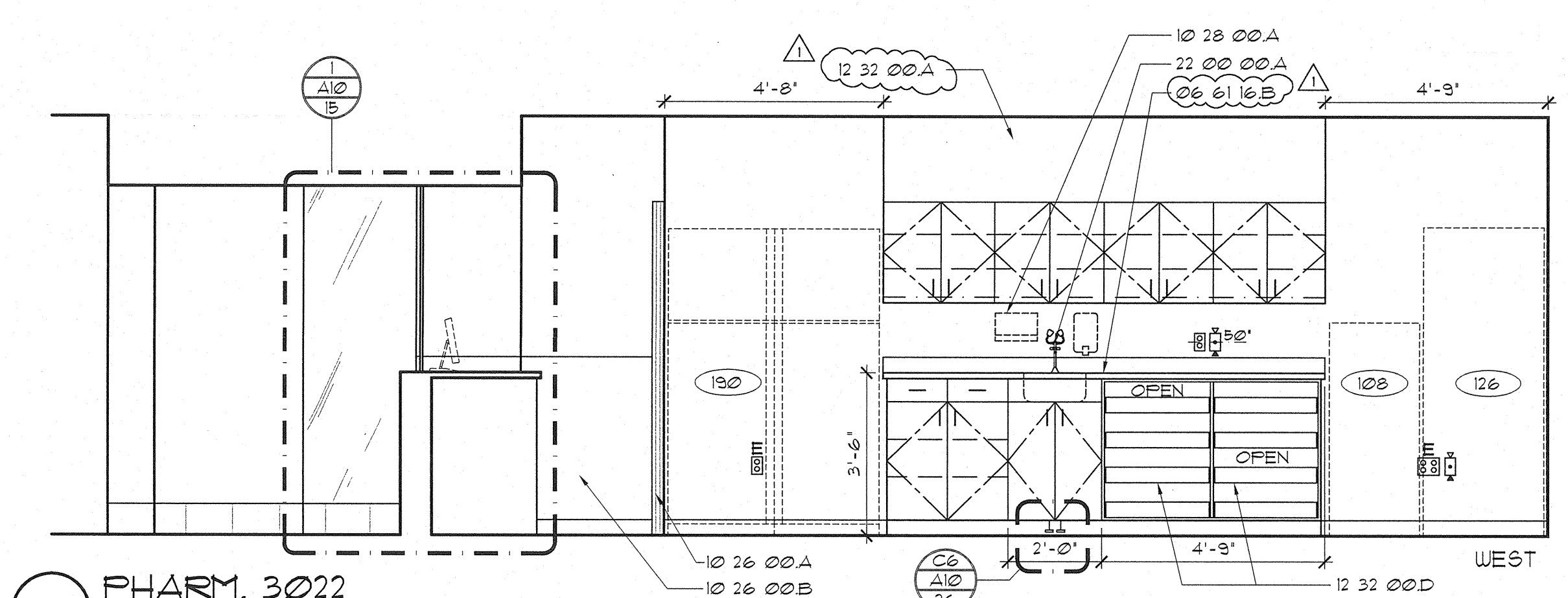
C

D

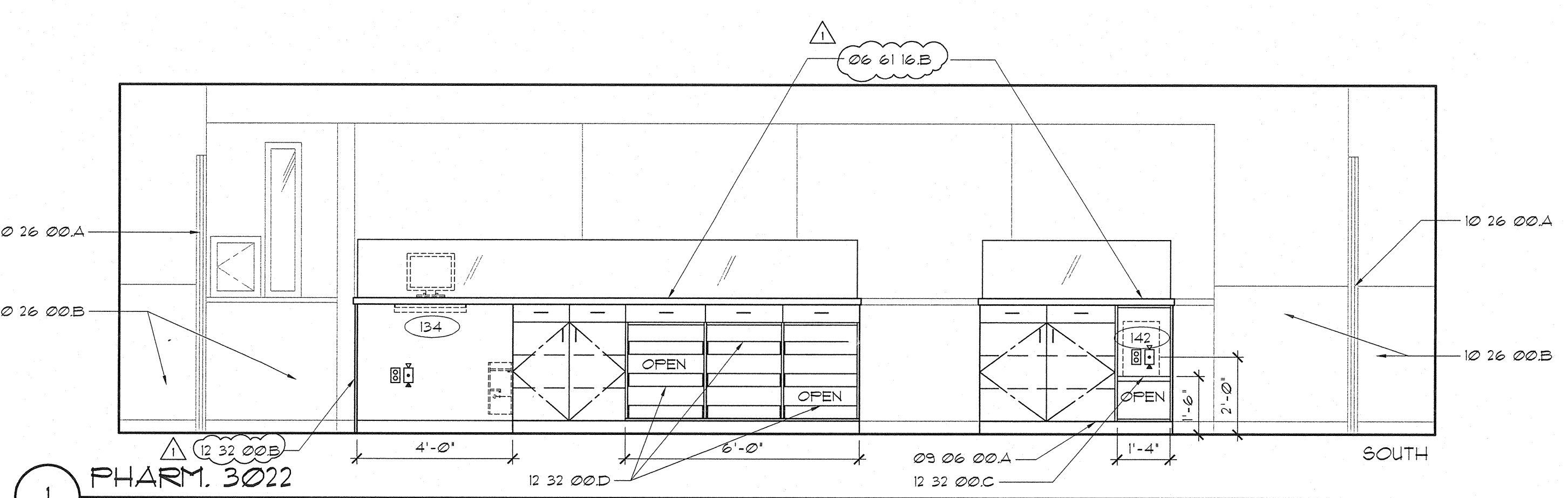
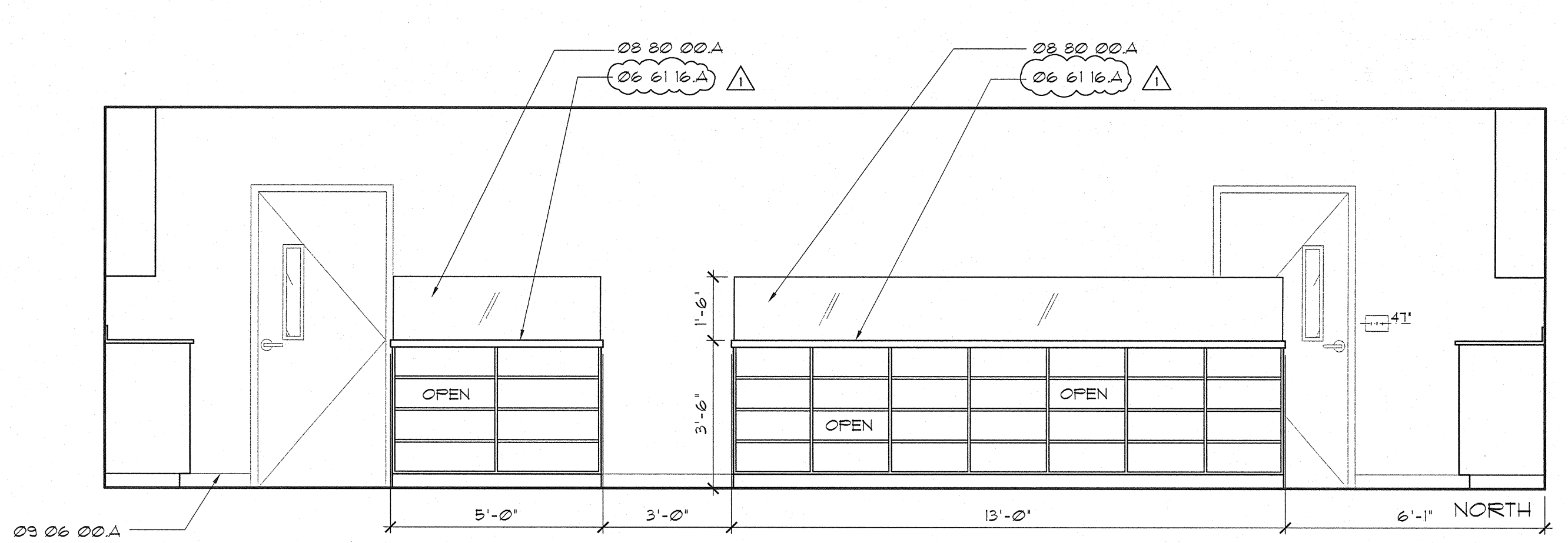
E



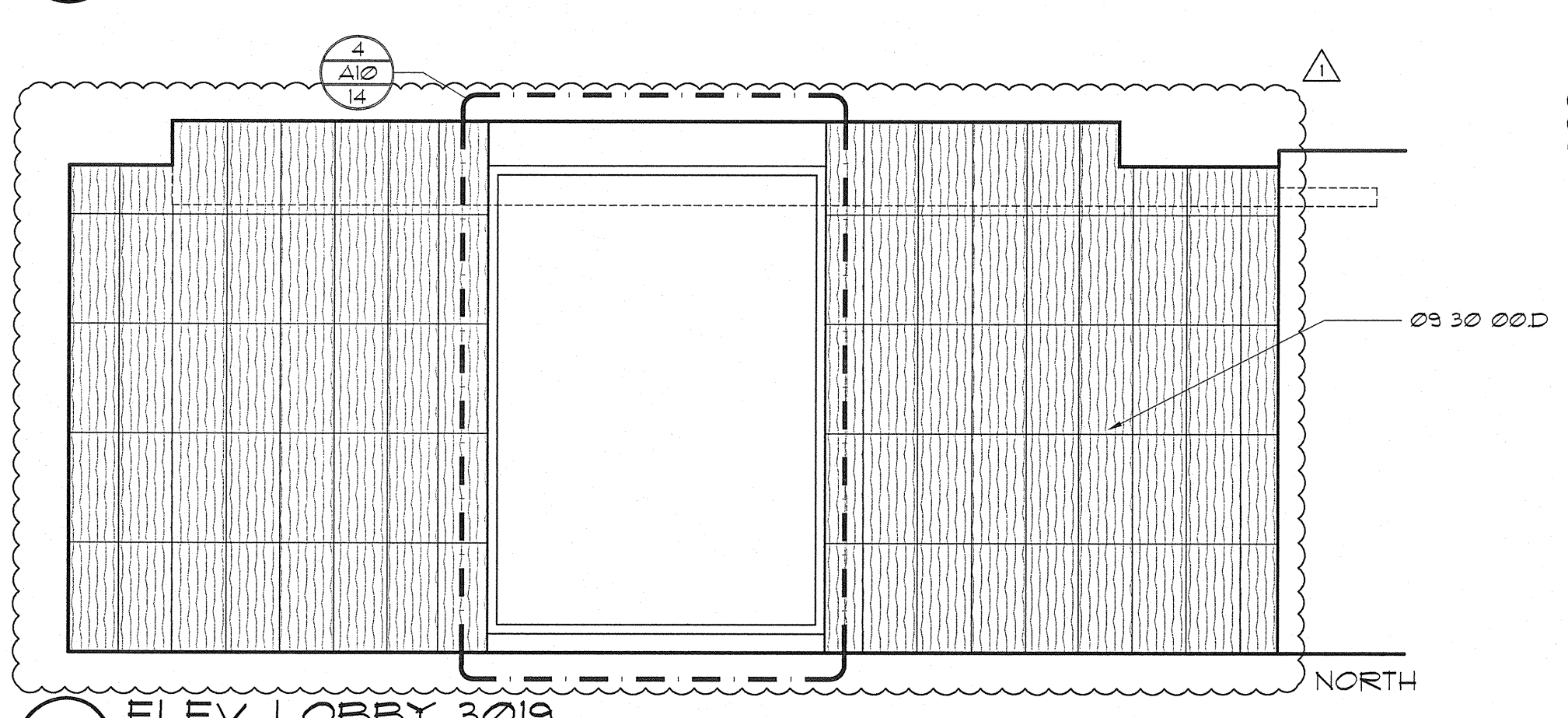
1 PHARM. 3022



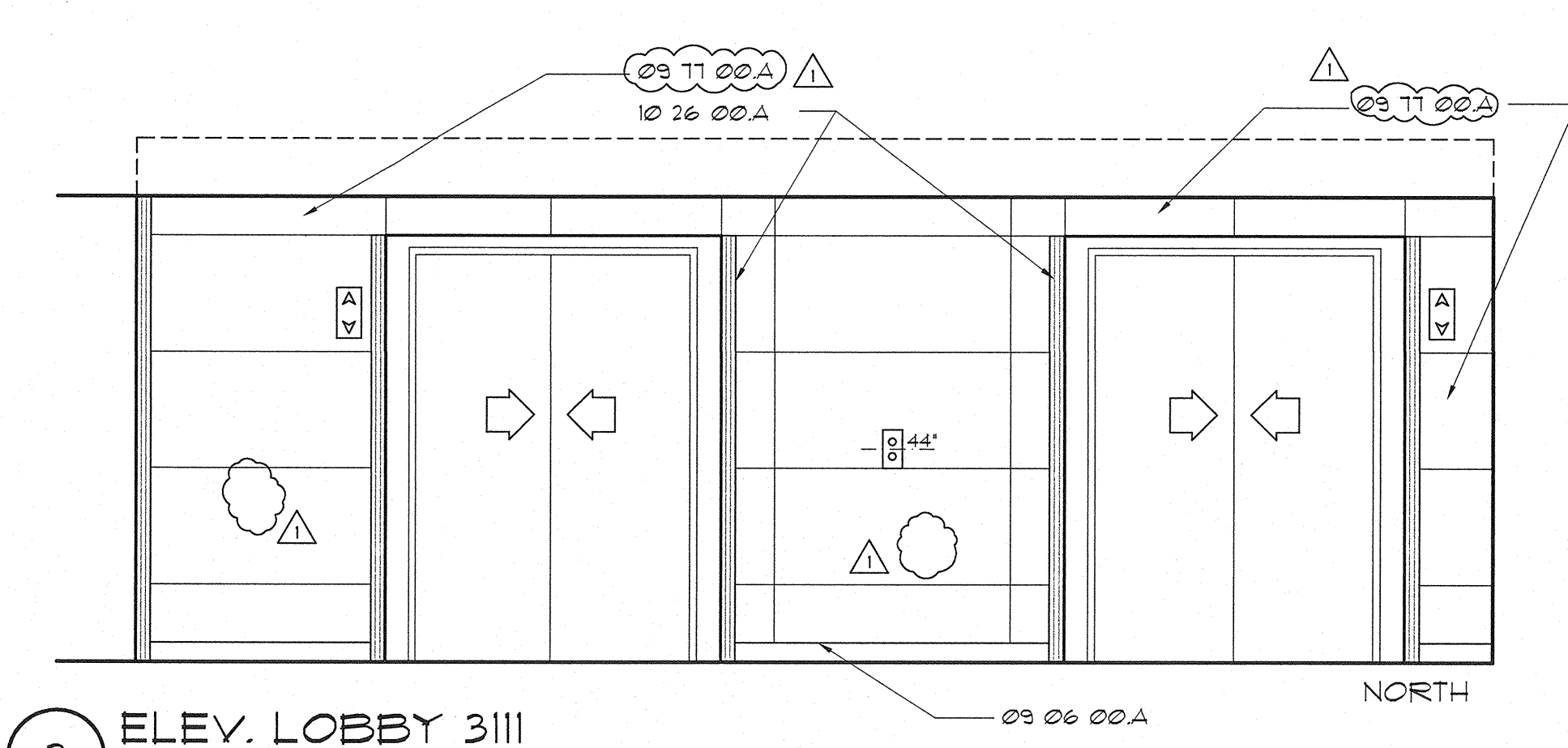
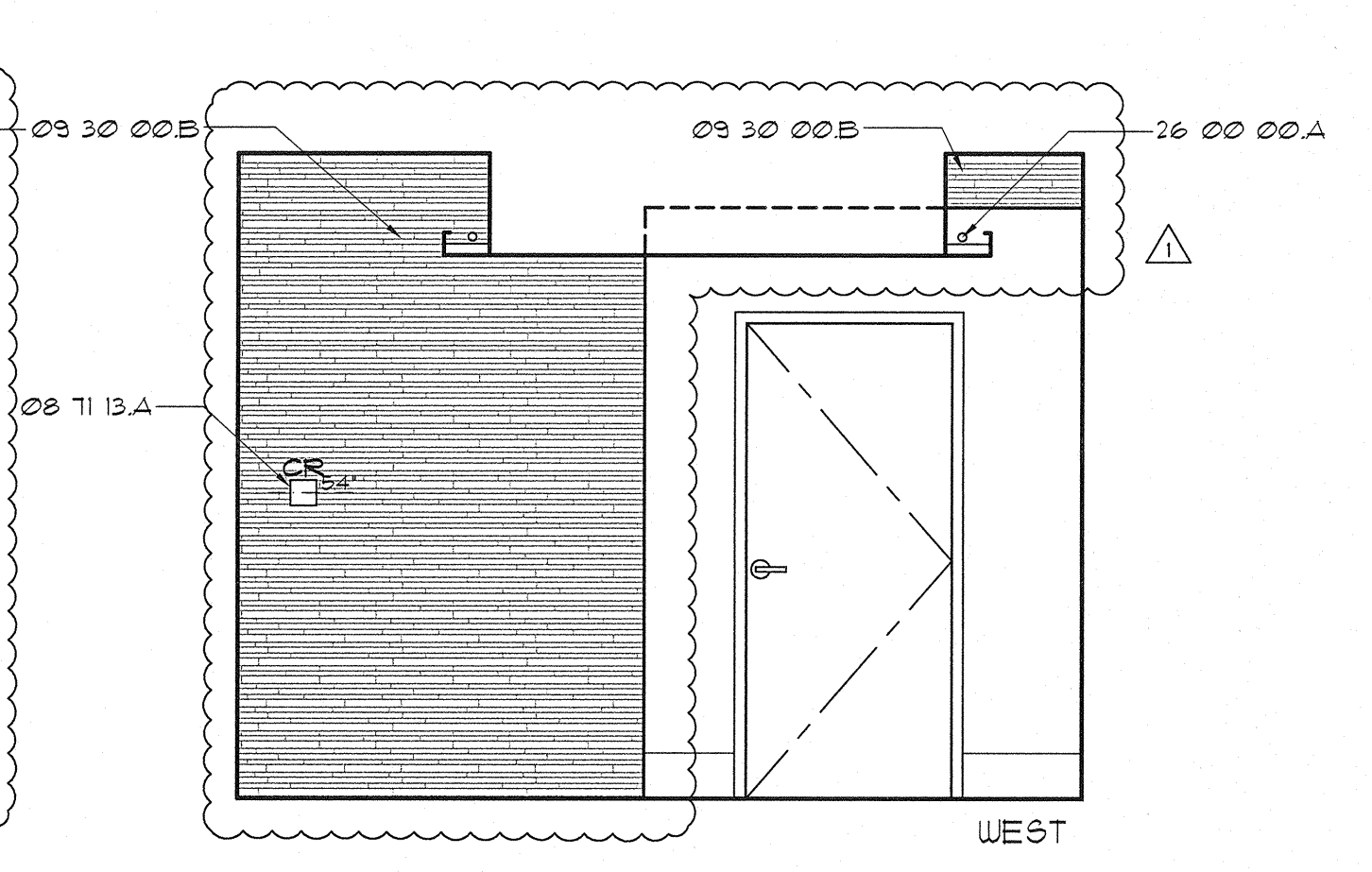
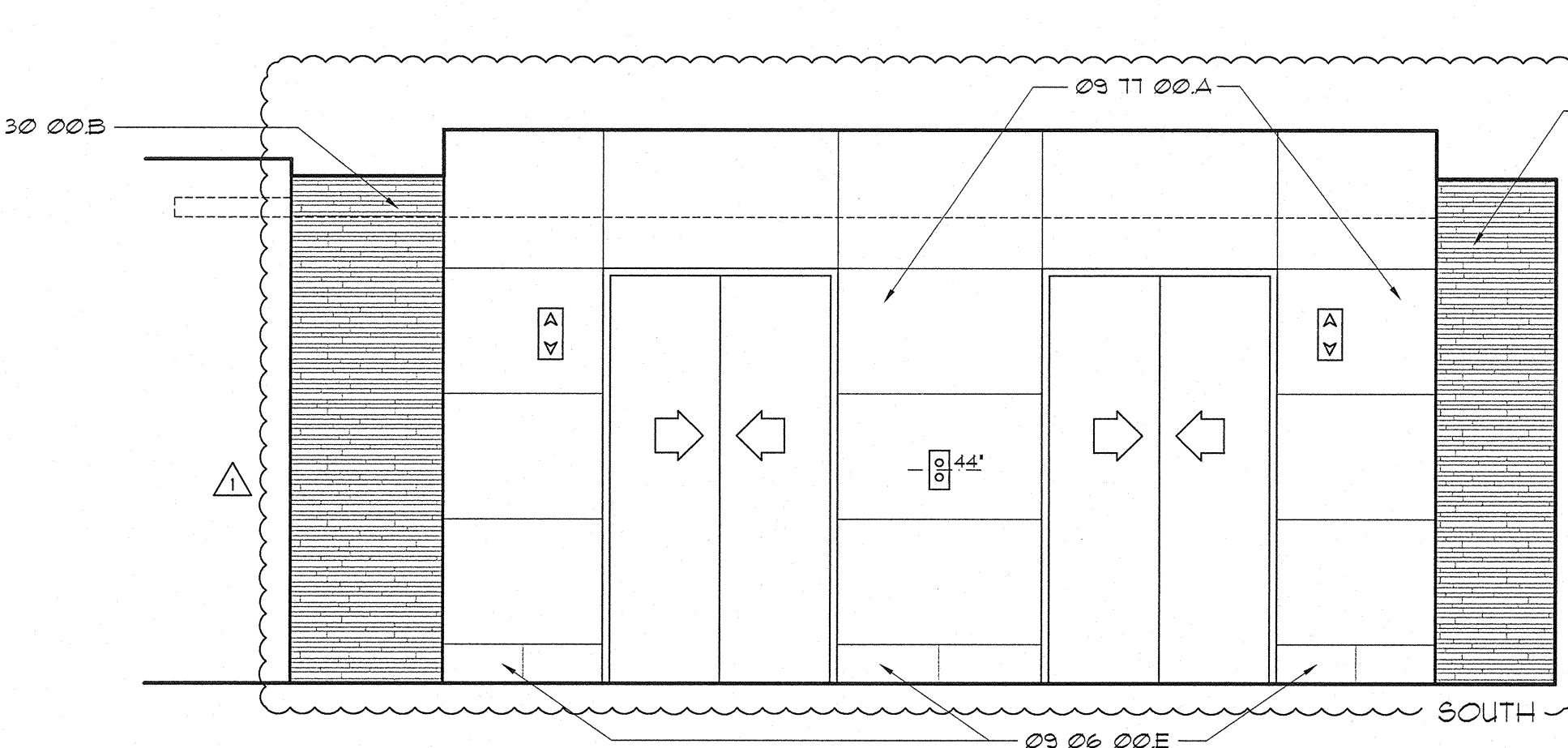
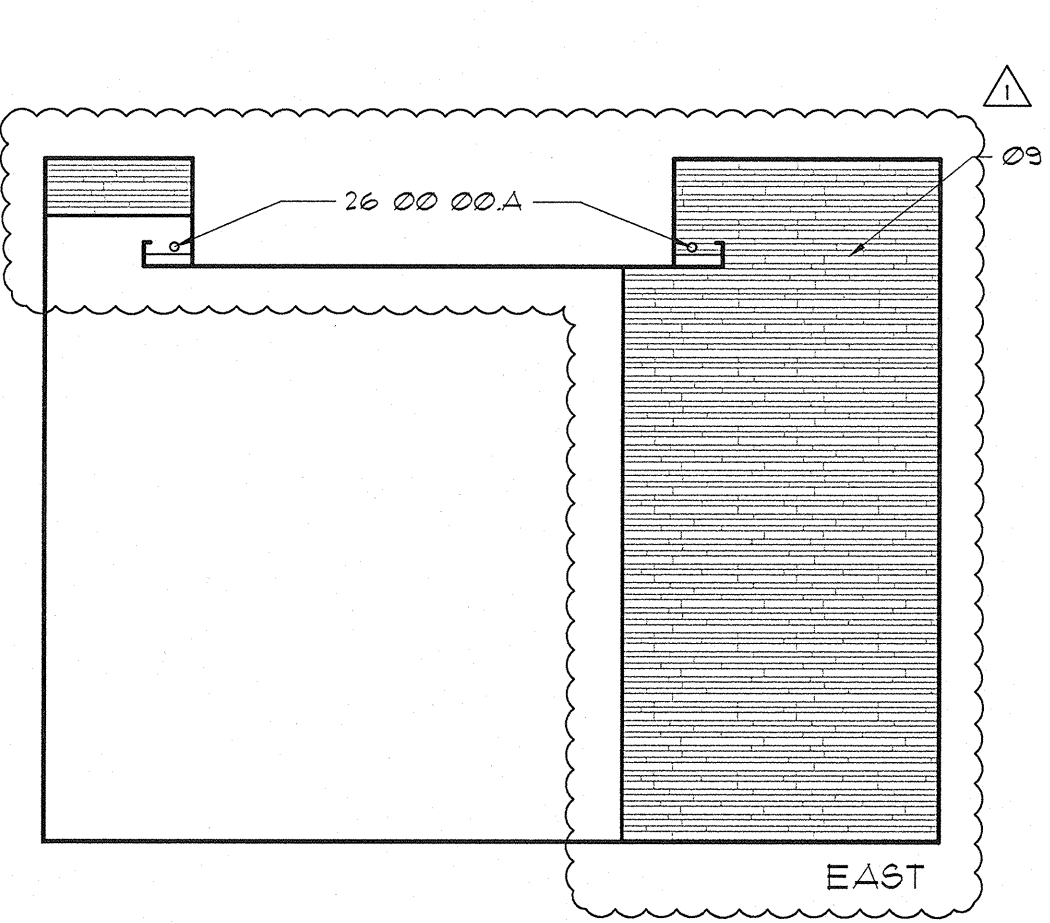
1 PHARM. 3022



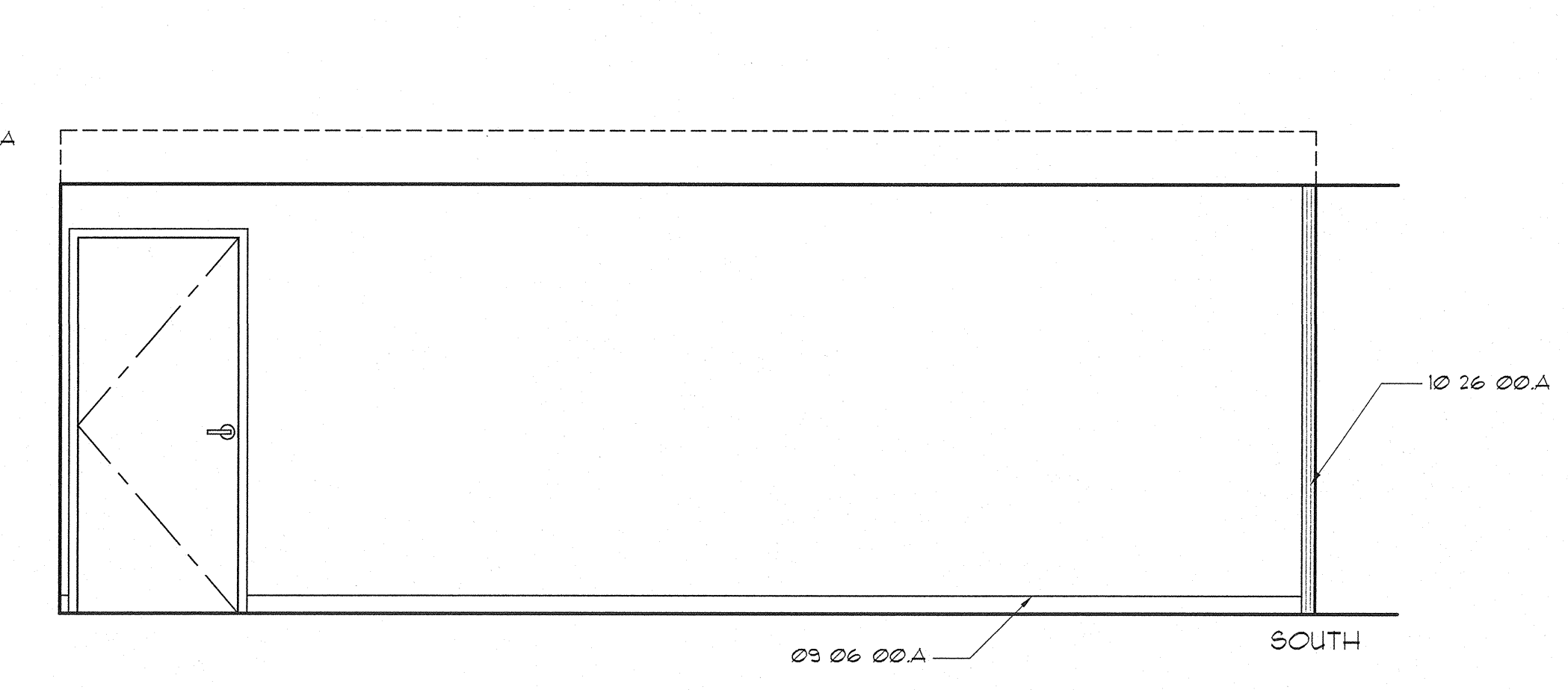
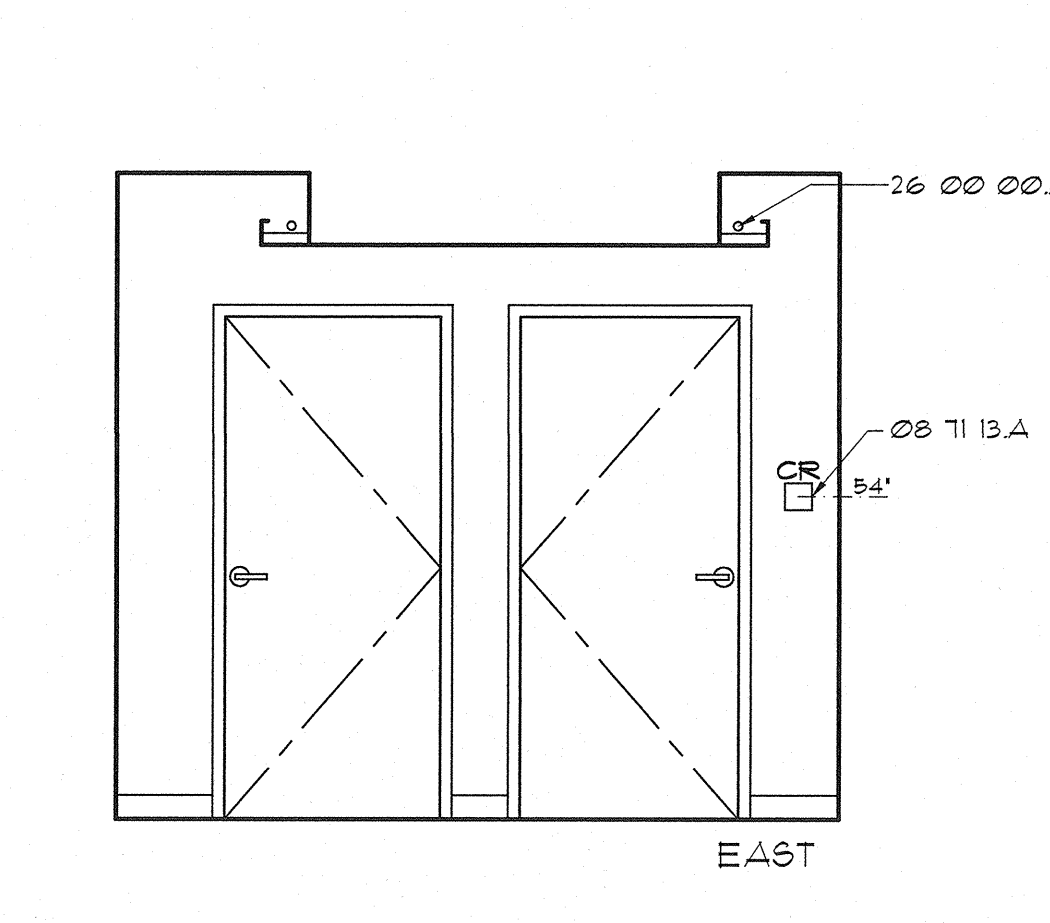
1 PHARM. 3022



2 ELEV. LOBBY 3019



3 ELEV. LOBBY 3111



- MATERIAL LEGEND**
- Division 06 Wood, Plastics & Composites**
- 06 61 16 A SOLID SURFACE COUNTER  
06 61 16 B SOLID SURFACE COUNTERTOP AND INTEGRAL BACK SPLASH WITH INTEGRAL SINK
- Division 08 Openings**
- 08 11 13 A CARD READER  
08 80 00 A 1/4" TEMPERED GLAZING W/ CUSTOM PATTERN FILM (3'-6")
- Division 09 Finishes**
- 09 06 00 A BASE AS SCHEDULED IN SECTION 09 06 00  
09 30 00 A TILE AS SCHEDULED IN SECTION 09 06 00
- B TILE T-03  
C TILE T-10  
D TILE T-12  
E TILE T-13
- Division 10 Specialties**
- 10 26 00 A CORNER GUARD (1'-2" AFF UNLESS OTHERWISE NOTED)  
B WALL PROTECTION (WP-02)  
C NOT USED  
10 28 00 A PAPER TOWEL DISPENSER (PT-01)
- Division 12 Furnishings**
- 12 32 00 A PLASTIC LAMINATE-CLAD SOFFIT FASCIA PANEL  
B 1-1/2" PLASTIC LAMINATE-CLAD END PANEL  
C HEAVY-DUTY PULL OUT SHELF FOR PRINTER  
D 4" DEEP ROLL OUT SHELF
- Division 22 Plumbing**
- 22 00 00 A GOOSENECK WITH EMERGENCY EYE WASH 4 FOOT PEDALS
- Division 26 Electrical**
- 26 00 00 A COVE LIGHT AS SCHEDULED
- GENERAL NOTES**
- NOT USED

- LEGEND**
- POSSIBLE LOCATION FOR GEL DISPENSER (FOIC)  
SOAP DISPENSER (FOIC)  
PAPER TOWEL DISPENSER (FOIC)  
GLOVE DISPENSERS (FOIC)  
SHARPS CONTAINER (FOIC)  
NURSE CALL / PULL  
INTERCOM  
CODE CALL  
EQUIPMENT TAG (SEE SECTION 1100)  
NURSE CALL LIGHT
- DUPLEX RECEPTACLE W/ EMERGENCY POWER  
DUPLEX RECEPTACLE  
QUADPLEX RECEPTACLE W/ EMERGENCY POWER  
QUADPLEX RECEPTACLE  
MEDICAL GAS OUTLETS:  
A - MEDICAL AIR  
O - OXYGEN  
V - VACUUM  
SLIDE  
JUNCTION BOX  
LIGHT SWITCH  
TELEPHONE/DATA JACK COMBINED (STANDARD 4 JACKS PER PLATE)  
WALL MOUNTED TELEPHONE  
THERMOSTAT  
24 HR CLOCK  
BATTERY CLOCK  
FIRE STROBE LIGHT
- SEC. 12320 CASEWORK LEGEND**  
(UNLESS OTHERWISE NOTED)
- NOT TO SCALE
- OPEN CABINET W/ ADJ. SHELVES  
2 ADJ. SHELVES  
UNDERCABINET LIGHT FIXTURE W/P-LAM VALANCE  
UPPER CABINET DOOR WITH PULL  
P-LAM COUNTERTOP AND 4" BACKSPLASH (OR OTHERWISE NOTED)  
BASE CABINET  
DRAWER WITH PULL  
KEYBOARD TRAY F.O.I.O.  
OPEN-KNEE SPACE  
LOCK  
HANGING FILE DRAWER = HF  
LATERAL FILE DRAWER = LF

GIFFIN • BOLTE • JURGENS  
ARCHITECTS  
815 S.W. SECOND AVENUE • PORTLAND, OREGON 97204  
(503) 223-0992 www.gbjarch.com FAX (503) 294-3961

REGISTERED ARCHITECT  
HERB K. GIFFIN  
STATE OF WASHINGTON

MultiCare  
EMERGENCY DEPARTMENT & CANCER CENTER EXPANSION  
TACOMA, WASHINGTON

CCD 05 01-21-09  
Date 09-26-2008  
Scale 3/8" = 1'-0"  
Drawn By MQ  
Job No. 4034

INTERIOR ELEVATIONS  
A9  
312