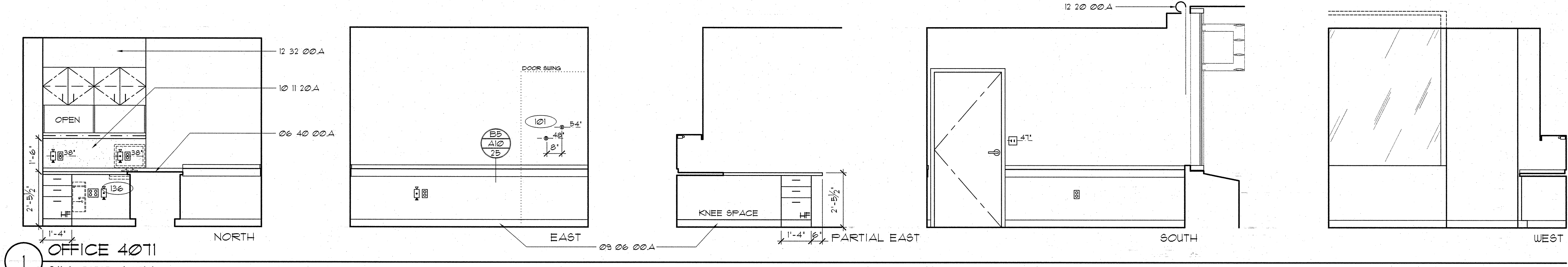


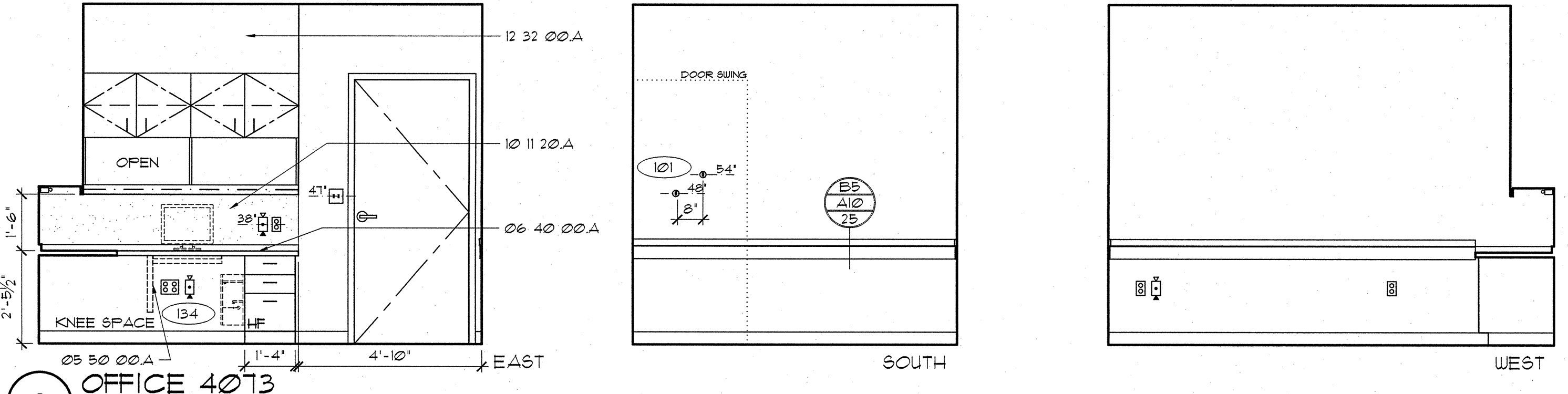
A



1 OFFICE 4071
SIM OFF 4071

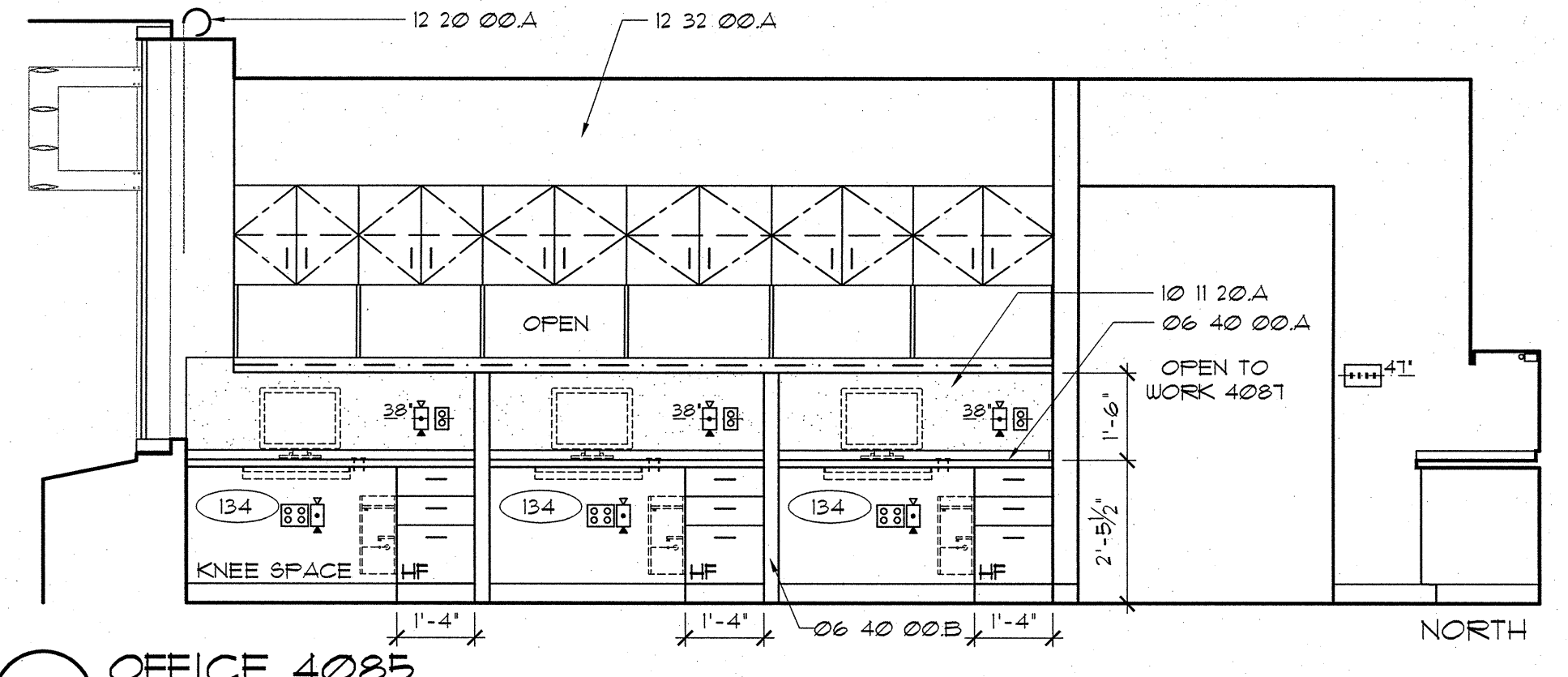
2 OFFICE 4073

B

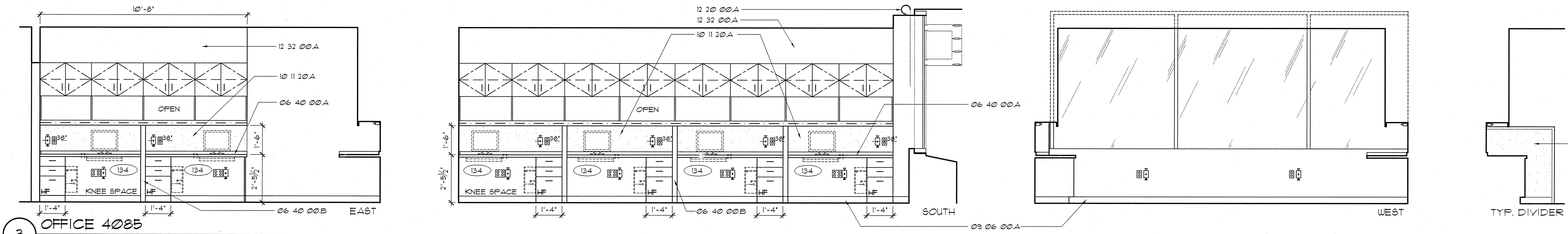


2 OFFICE 4073

3 OFFICE 4085



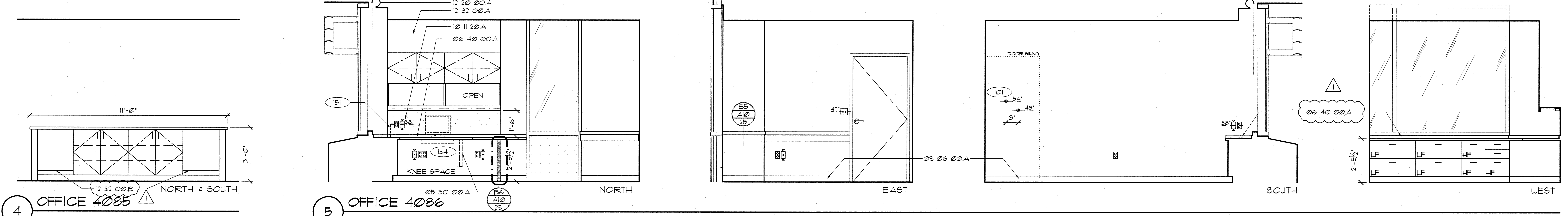
C



3 OFFICE 4085

TYP. DIVIDER

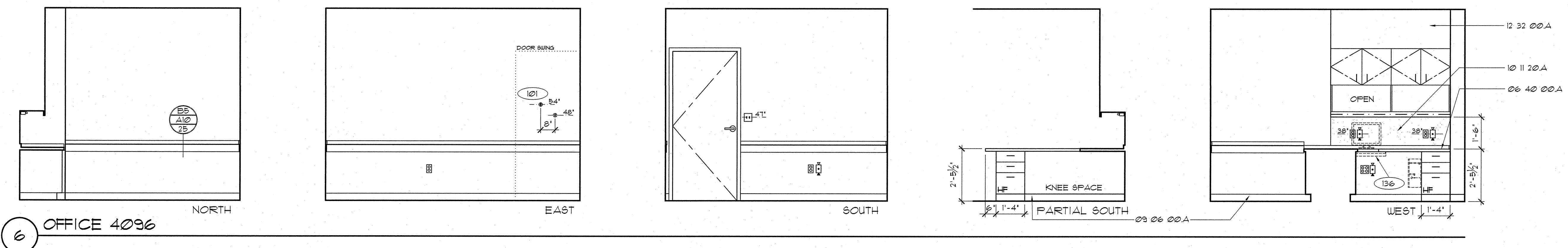
D



4 OFFICE 4085

5 OFFICE 4086

E



6 OFFICE 4096

- MATERIAL LEGEND**
- Division 05 Metals**
05 50 00.A SURFACE MOUNTED COUNTER SUPPORT BRACKET - SEE DETAIL D6/A1025
- Division 06 Wood, Plastics & Composites**
06 40 00.A 3/4" x 2" HARDWOOD TRIM
B HARDWOOD TRIM DIVIDER PANEL - SEE DETAIL B6/A1026
- Division 09 Finishes**
09 06 00.A BASE AS SCHEDULED IN SECTION 09 06 00
- Division 10 Specialties**
10 11 20.A TACK BOARD
- Division 12 Furnishings**
12 30 00.A HORIZONTAL SHADES
12 32 00.A PLASTIC LAMINATE-CLAD SOFFIT FASCIA PANEL
B HEAVY-DUTY FULL-OUT SHELF FOR PRINTER

- LEGEND**
- POSSIBLE LOCATION FOR GEL DISPENSER (FOIC)
SOAP DISPENSER (FOIC)
PAPER TOWEL DISPENSER (FOIC)
GLOVE DISPENSERS (FOIC)
SHARPS CONTAINER (FOIC)
NURSE CALL / FULL
INTERCOM
CODE CALL
EQUIPMENT TAG (SEE SECTION 11/200)
NURSE CALL LIGHT
- DUPLEX RECEPTACLE W/ EMERGENCY POWER
DUPLEX RECEPTACLE
QUADPLEX RECEPTABLE W/ EMERGENCY POWER
QUADPLEX RECEPTACLE
MEDICAL GAS OUTLETS:
A - MEDICAL AIR
O - OXYGEN
V - VACUUM
SLIDE
JUNCTION BOX
LIGHT SWITCH
TELEPHONE/DATA JACK COMBINED (STANDARD 4 JACKS PER PLATE)
WALL MOUNTED TELEPHONE
THERMOSTAT
24 HR CLOCK
BATTERY CLOCK
FIRE STROBE LIGHT

