

A

B

C

D

E

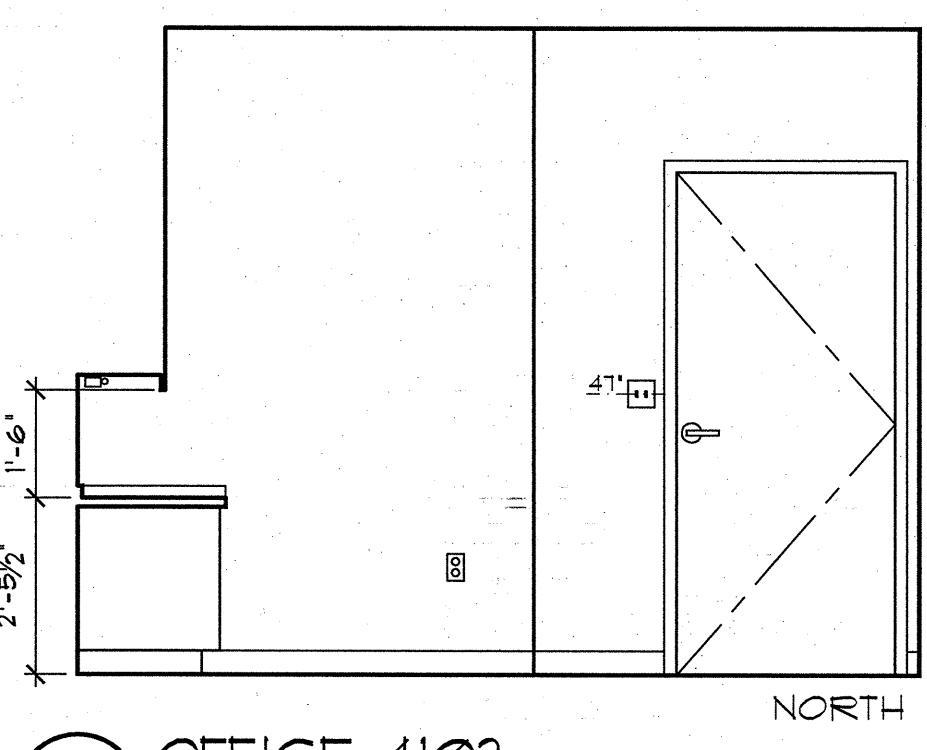
A

B

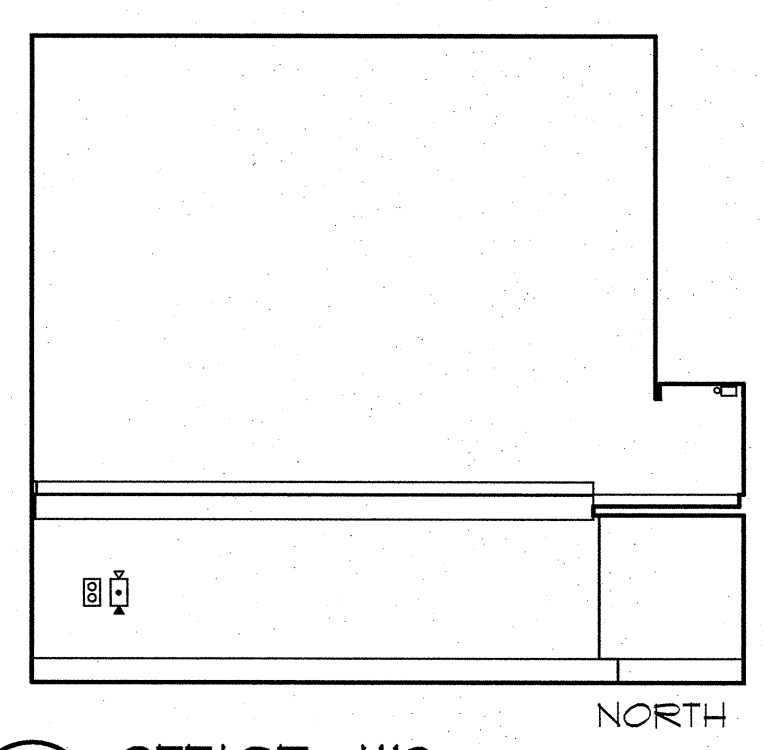
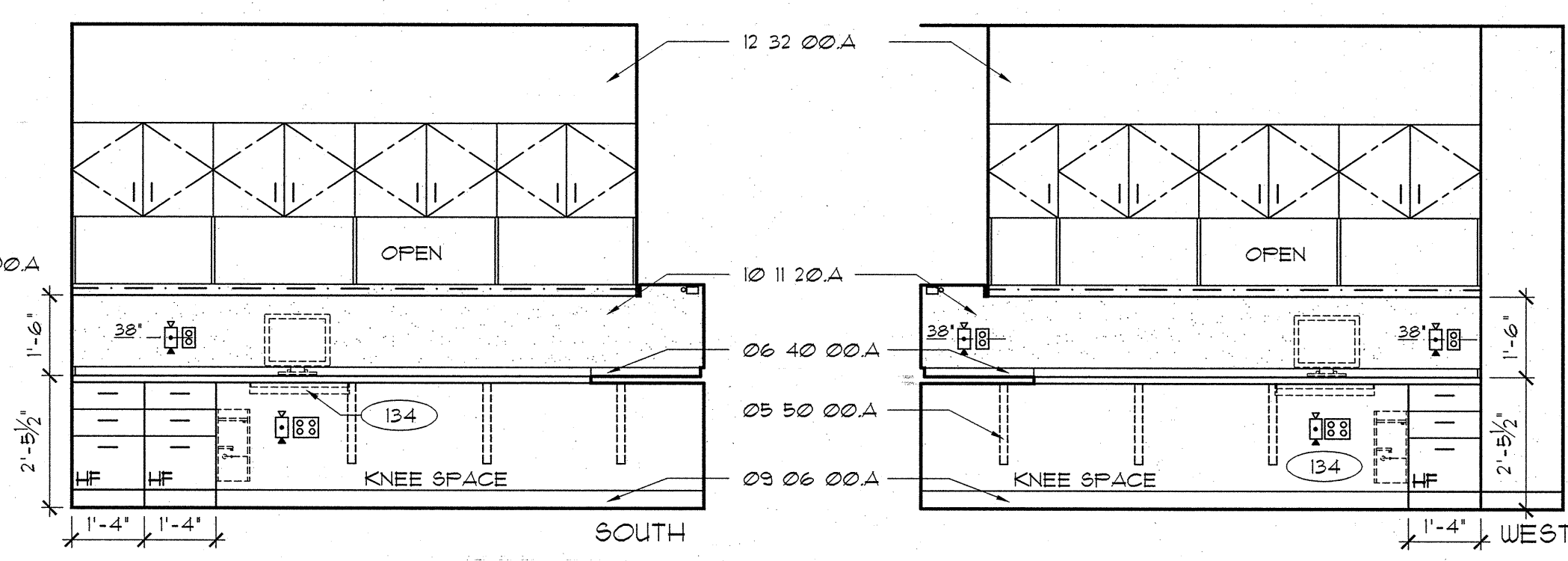
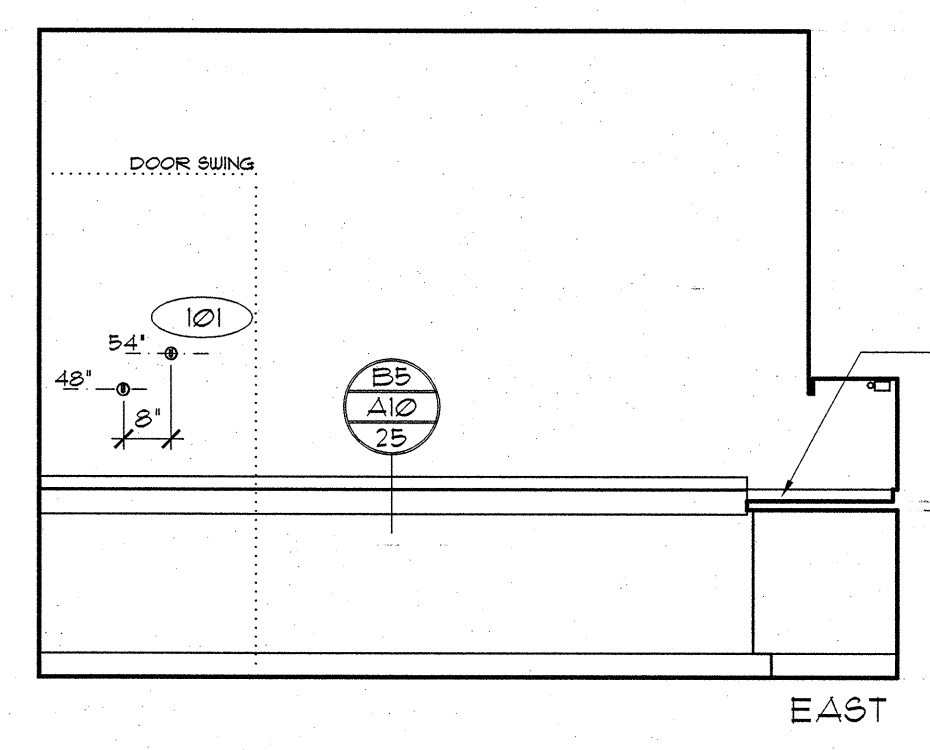
C

D

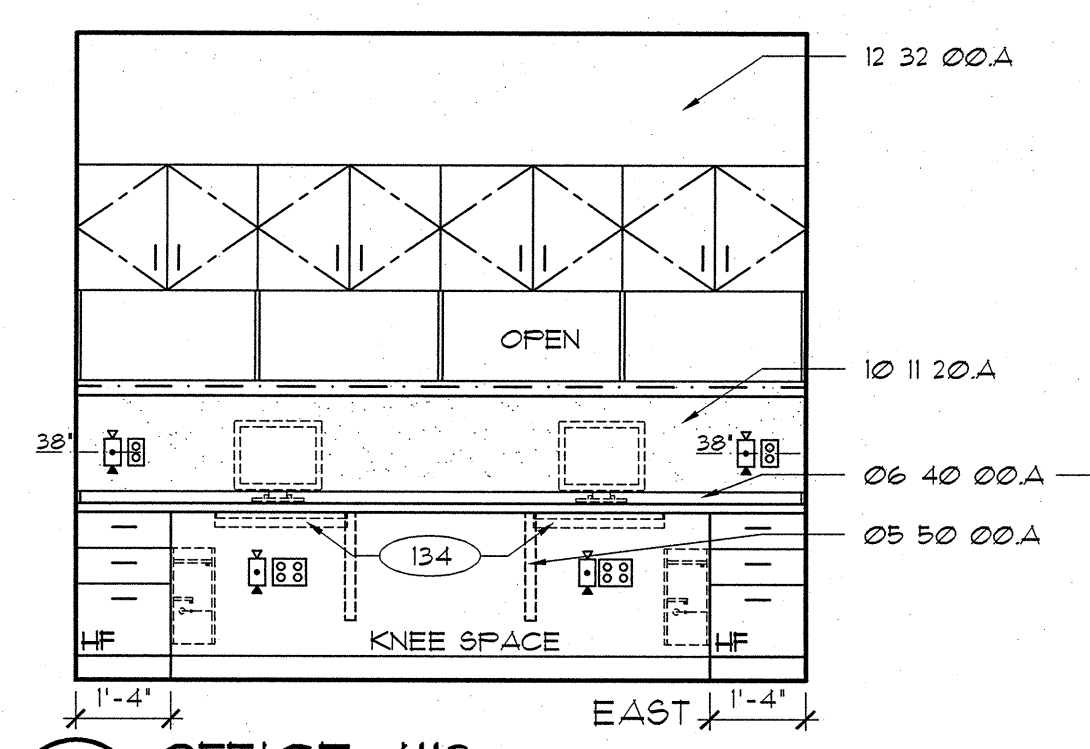
E



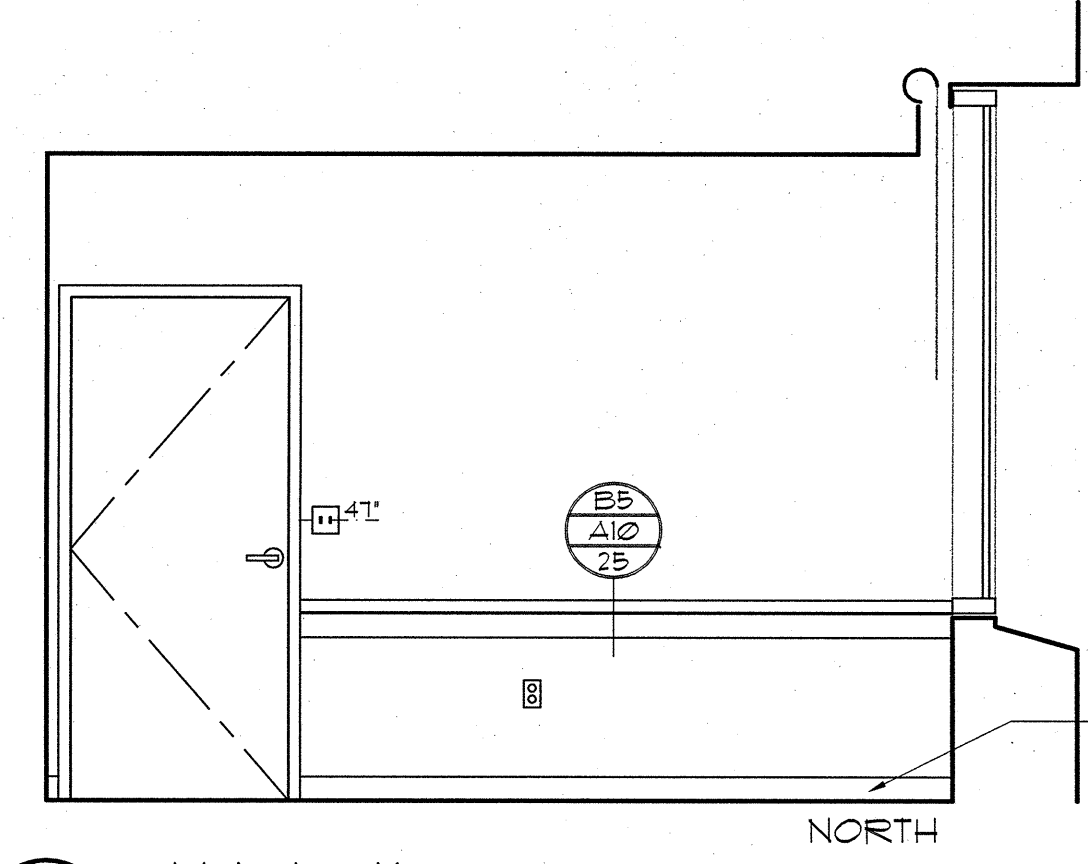
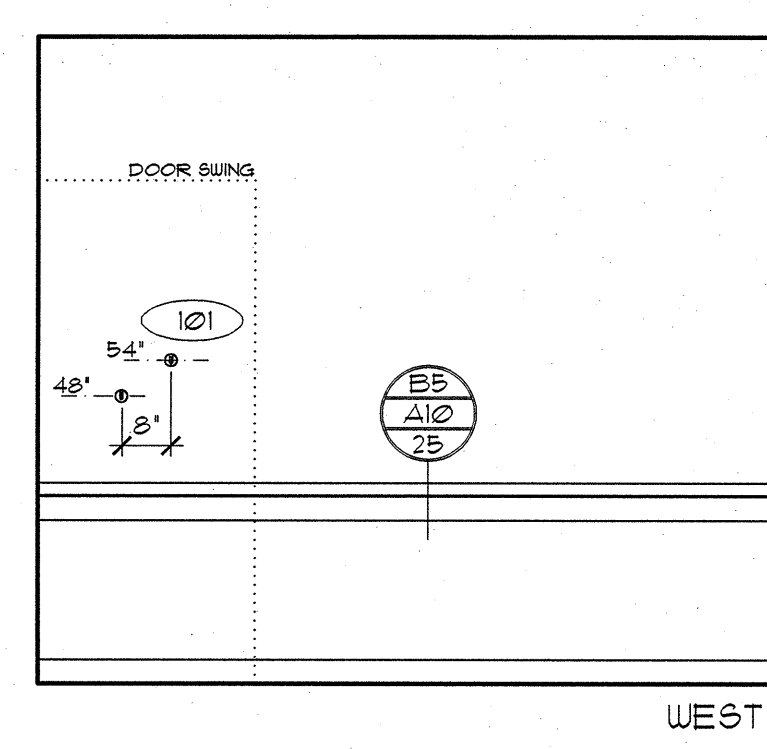
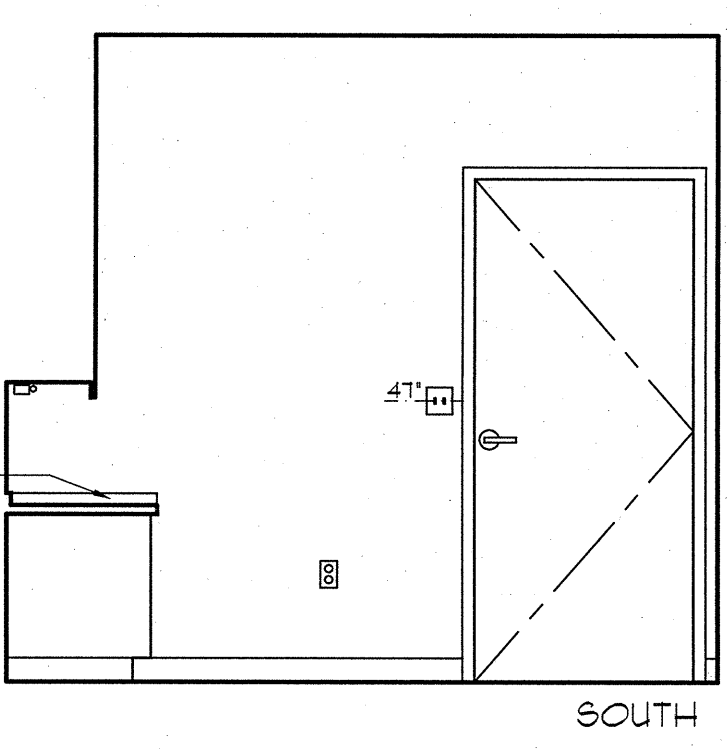
1 OFFICE 4102



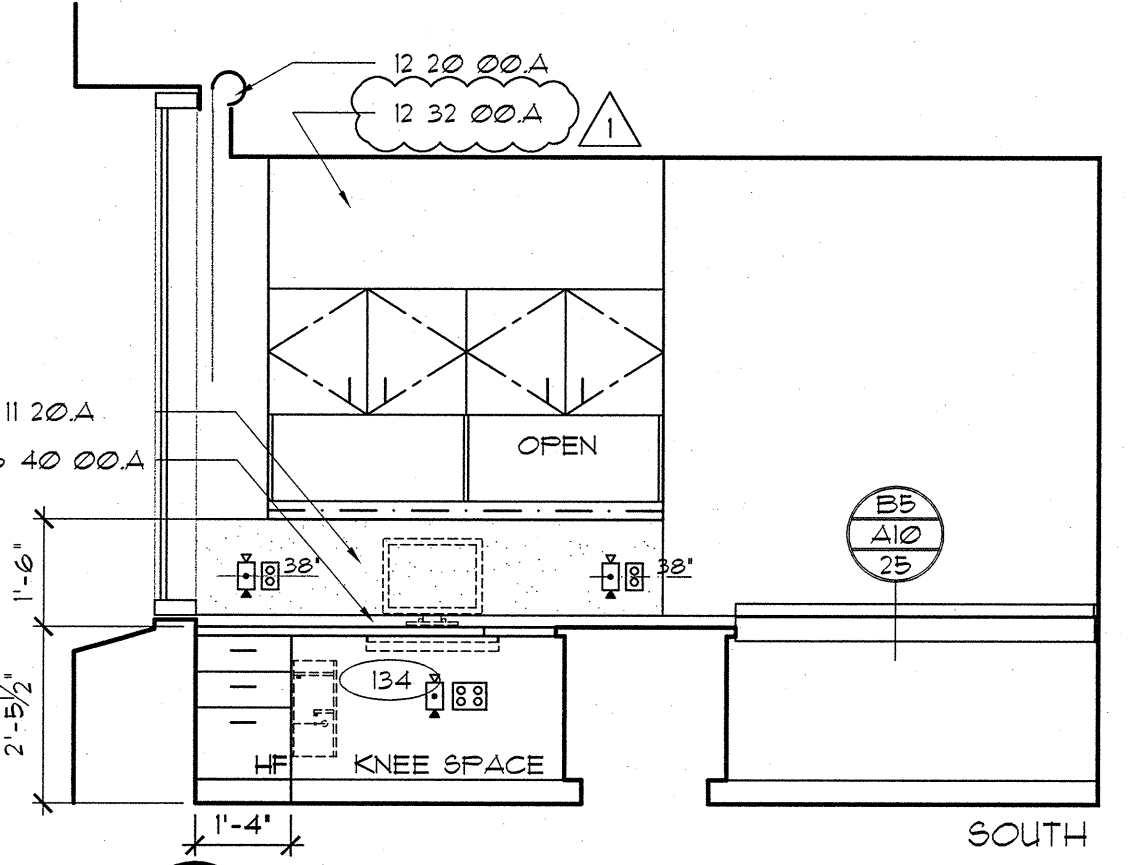
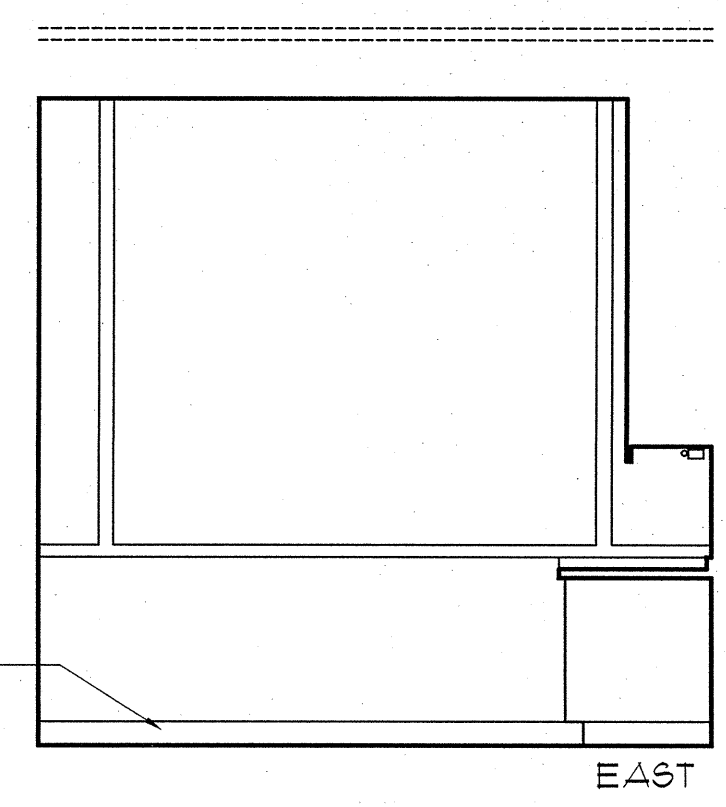
2 OFFICE 4113



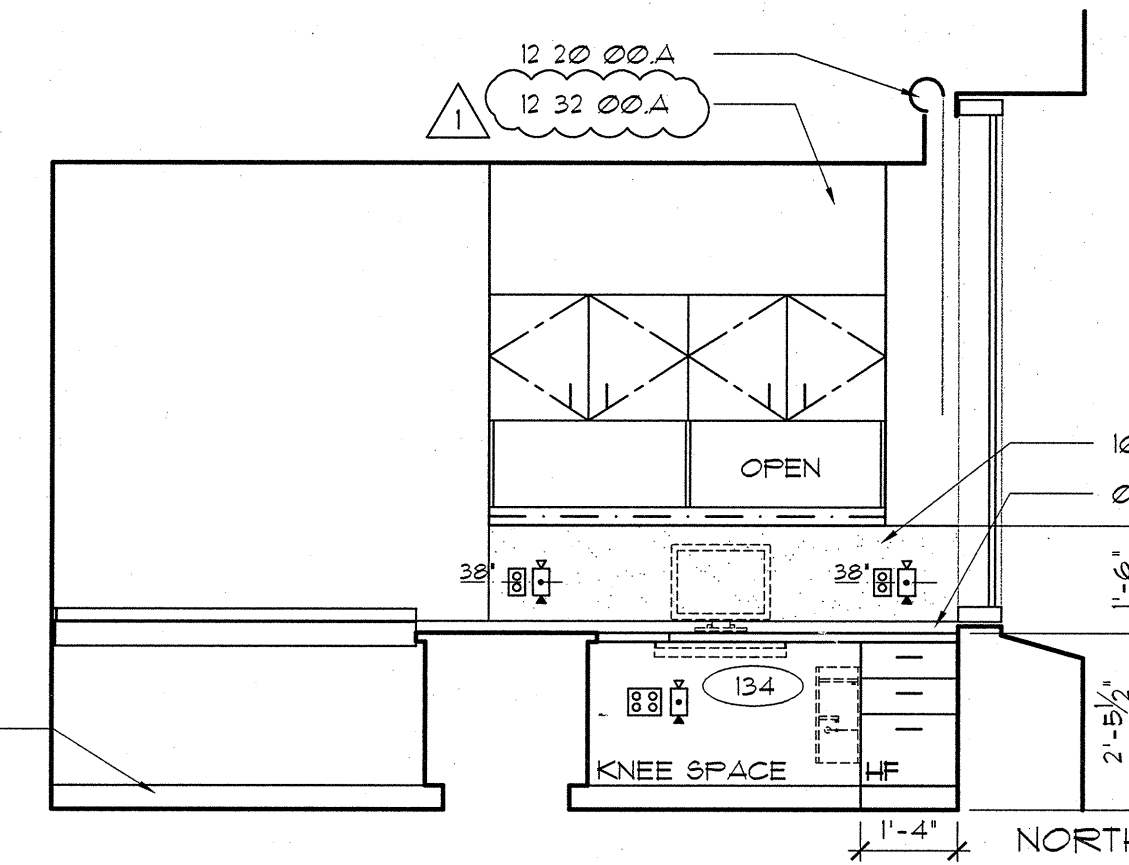
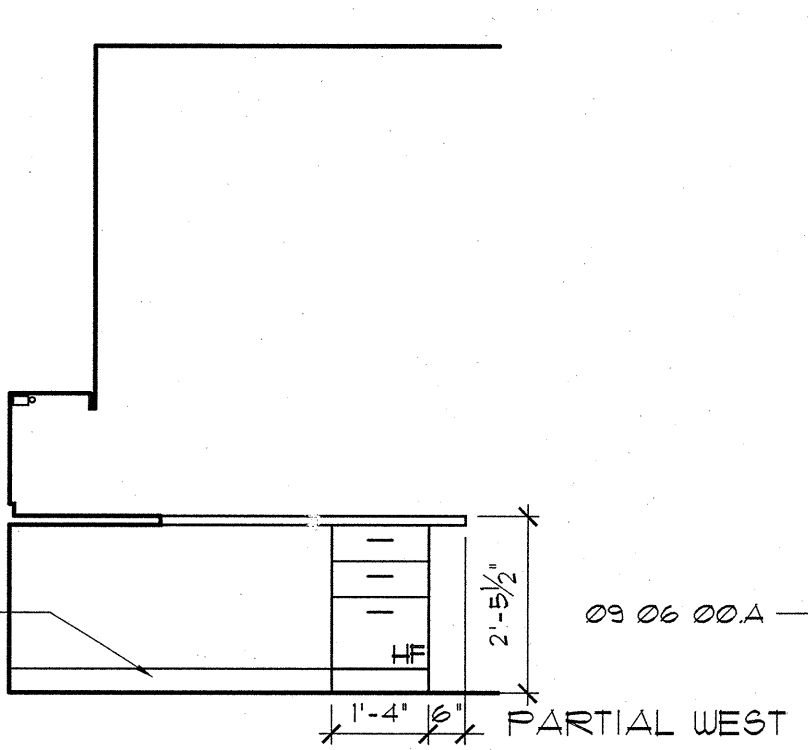
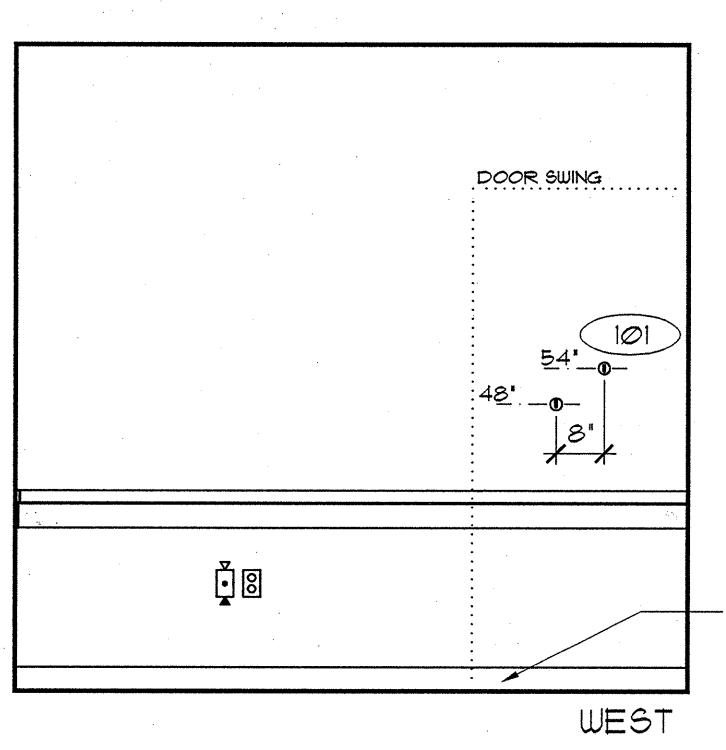
2 OFFICE 4113



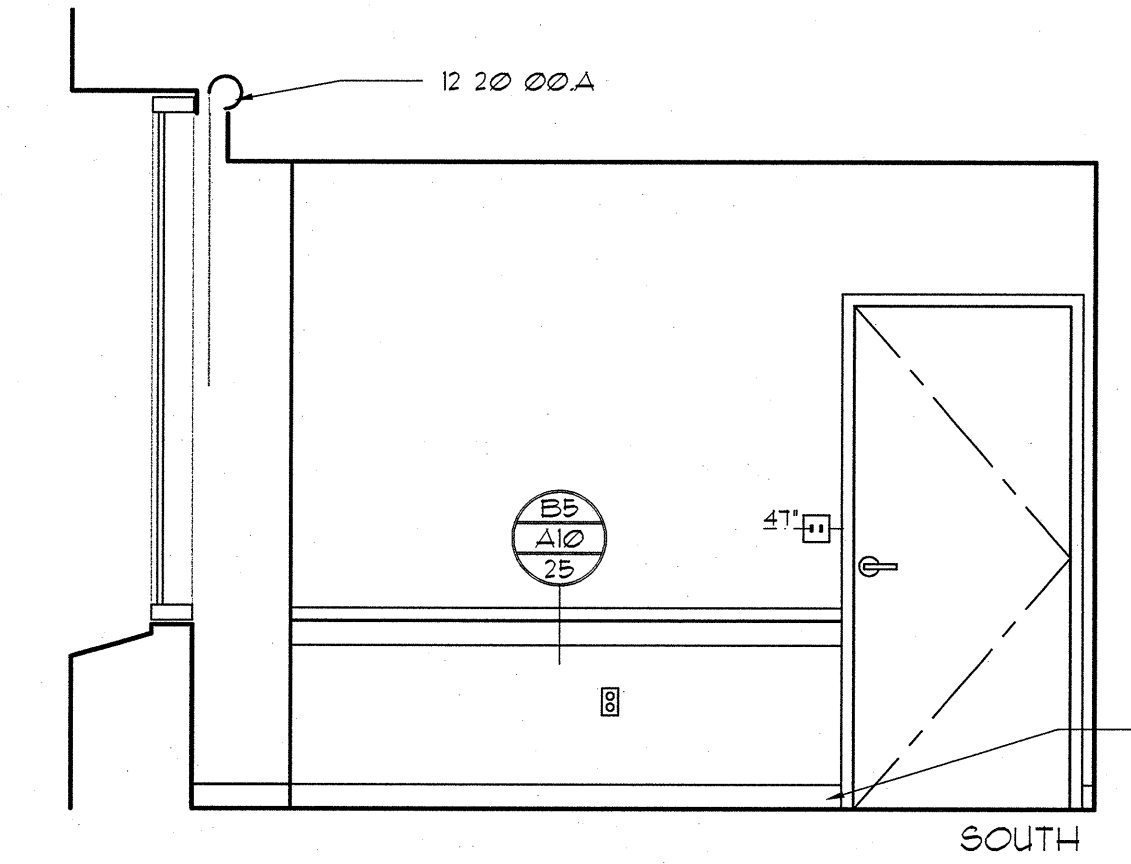
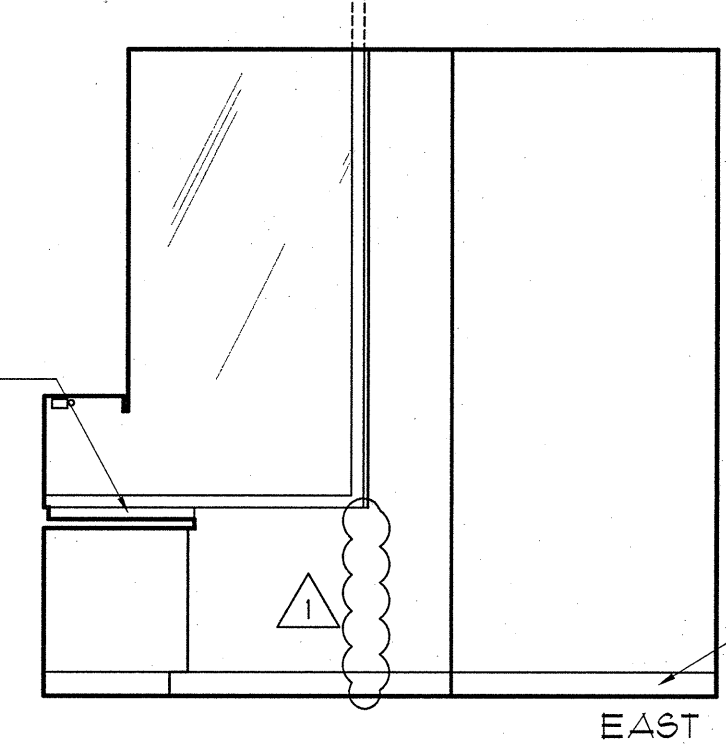
3 OFFICE 4133



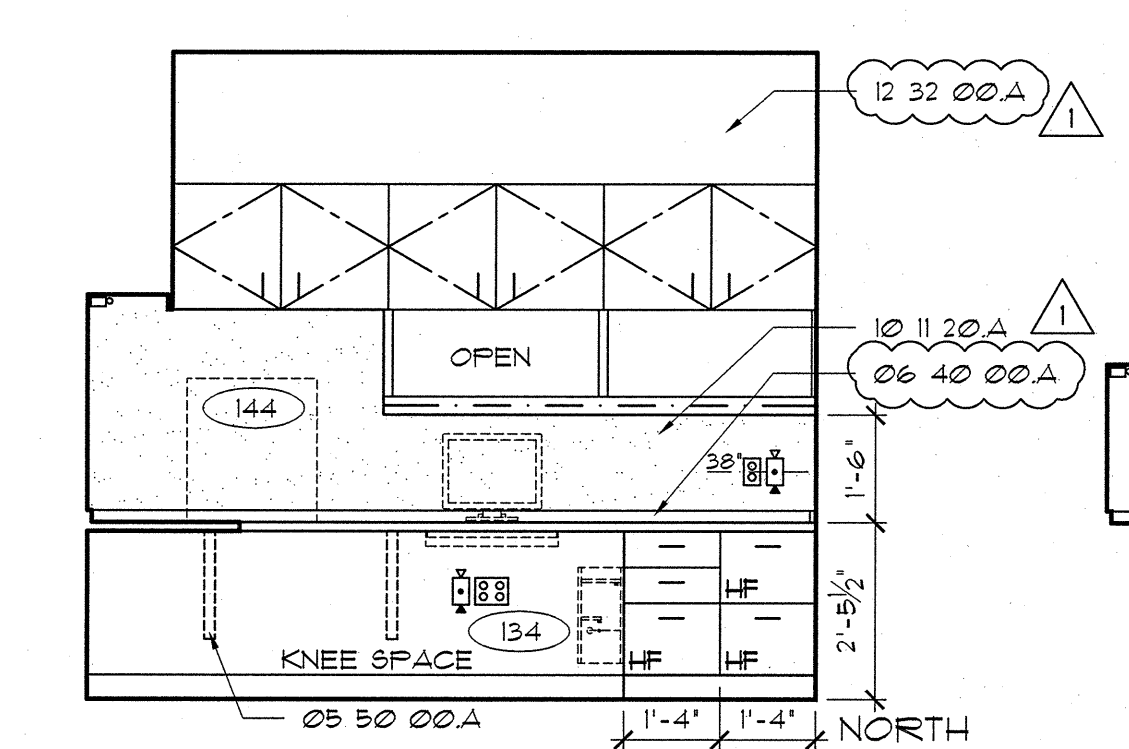
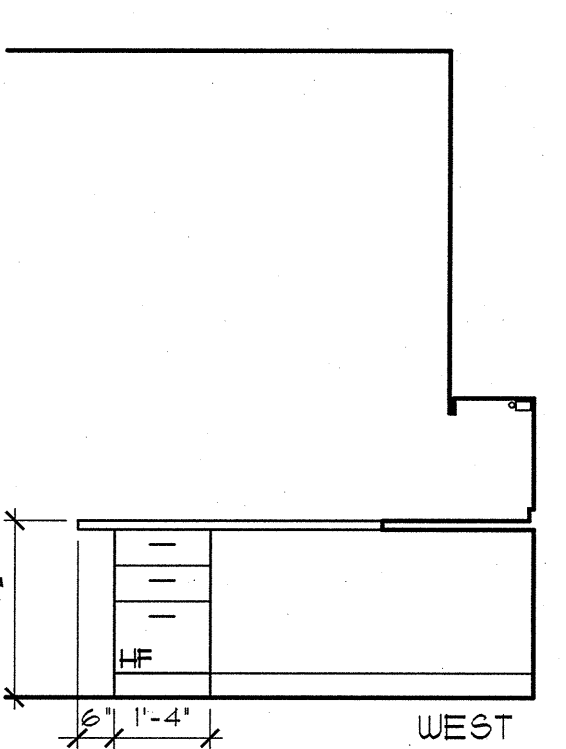
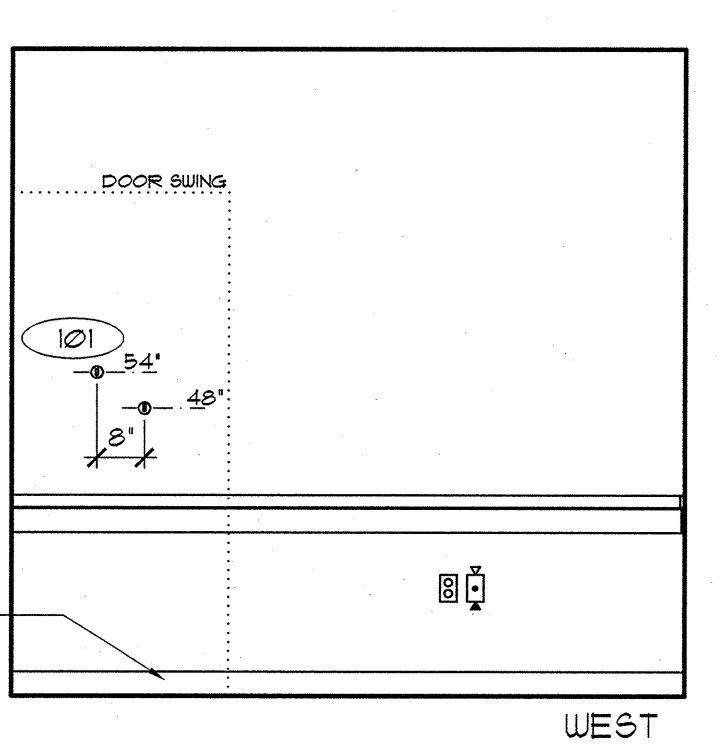
3 OFFICE 4133



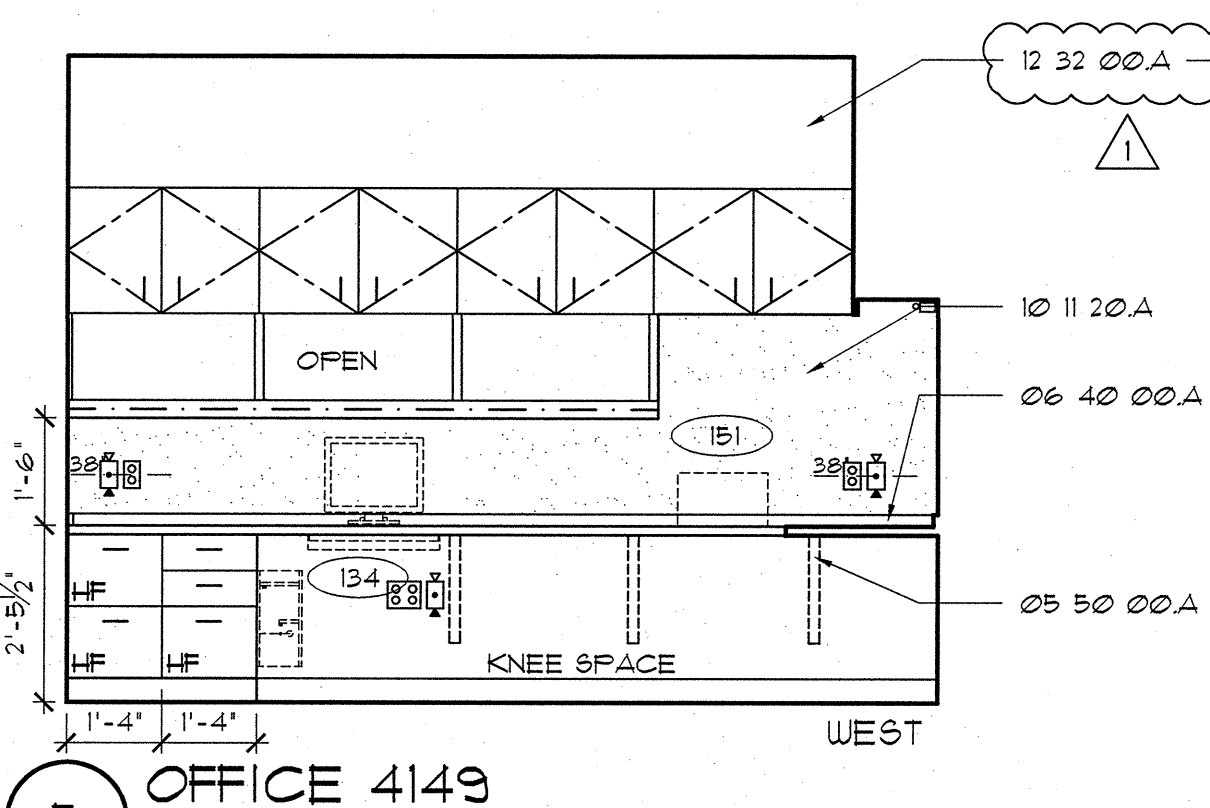
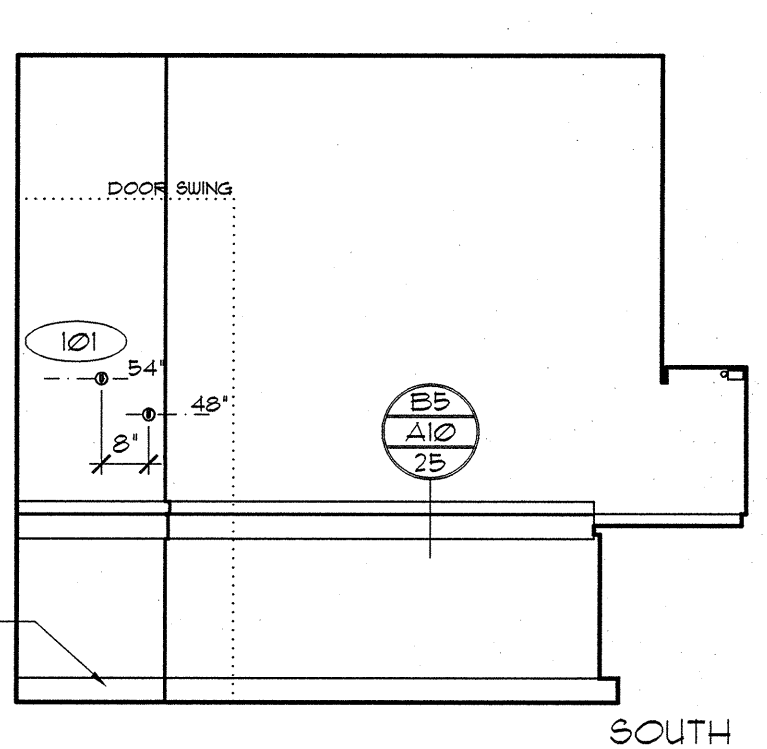
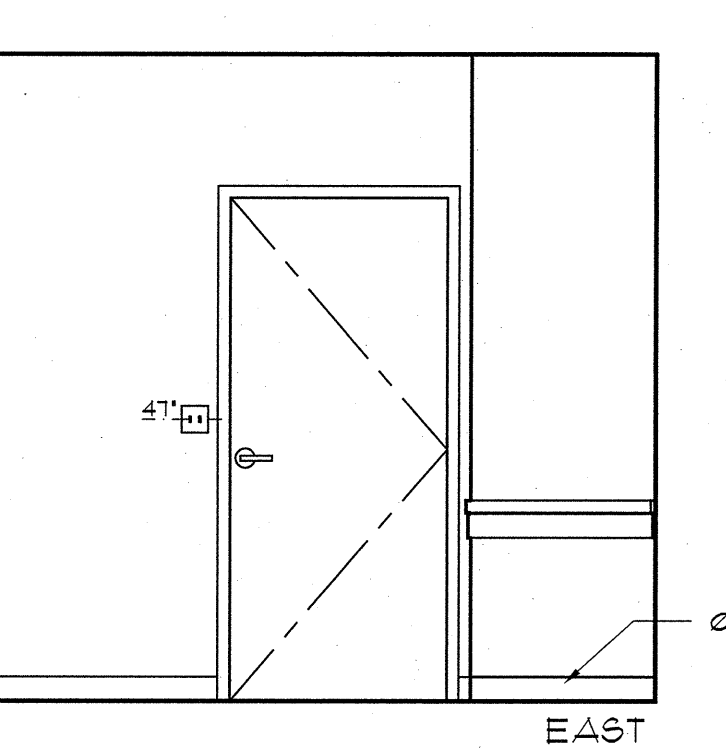
4 OFFICE 4134



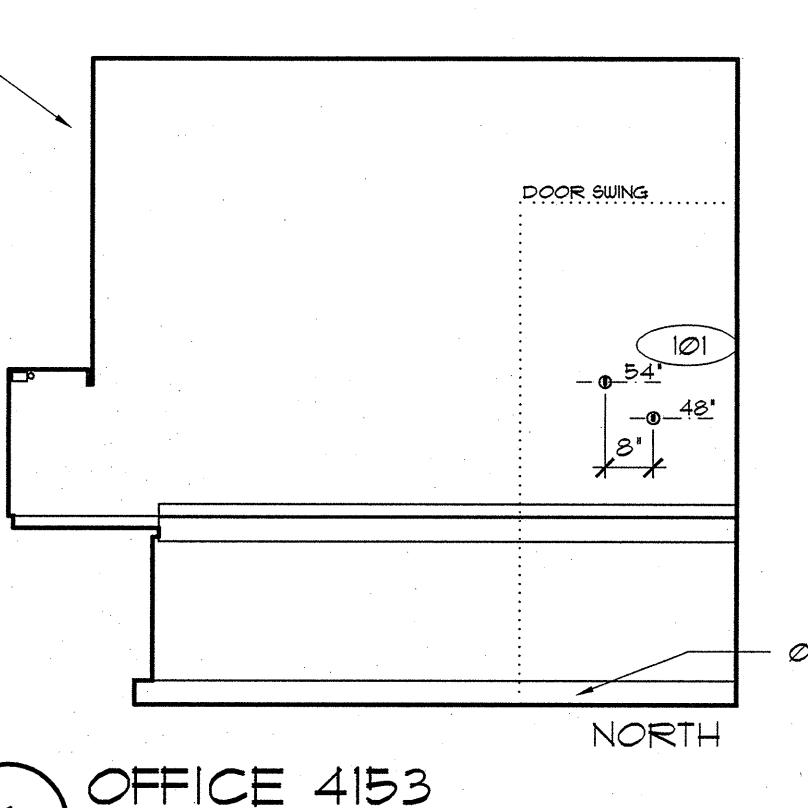
4 OFFICE 4134



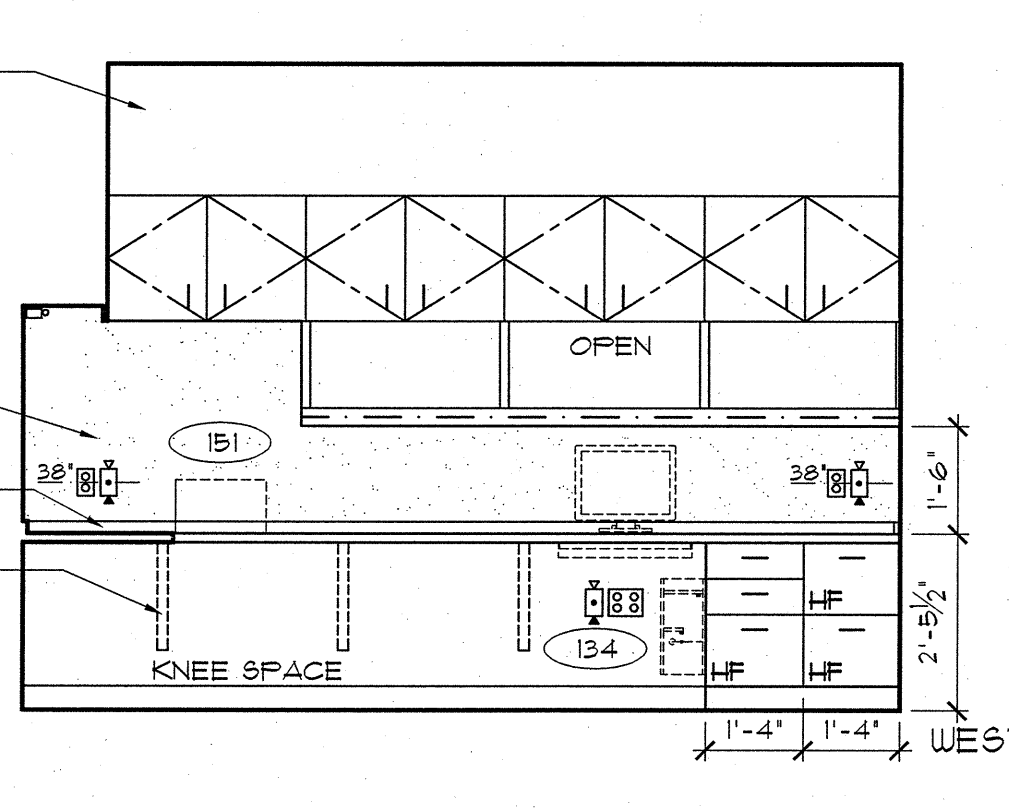
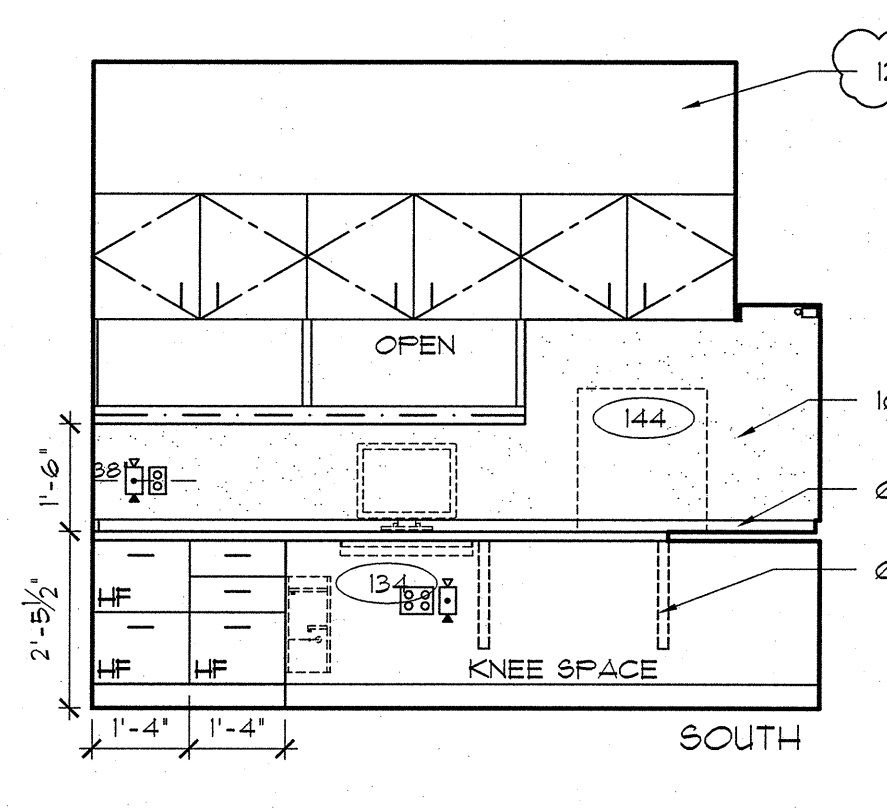
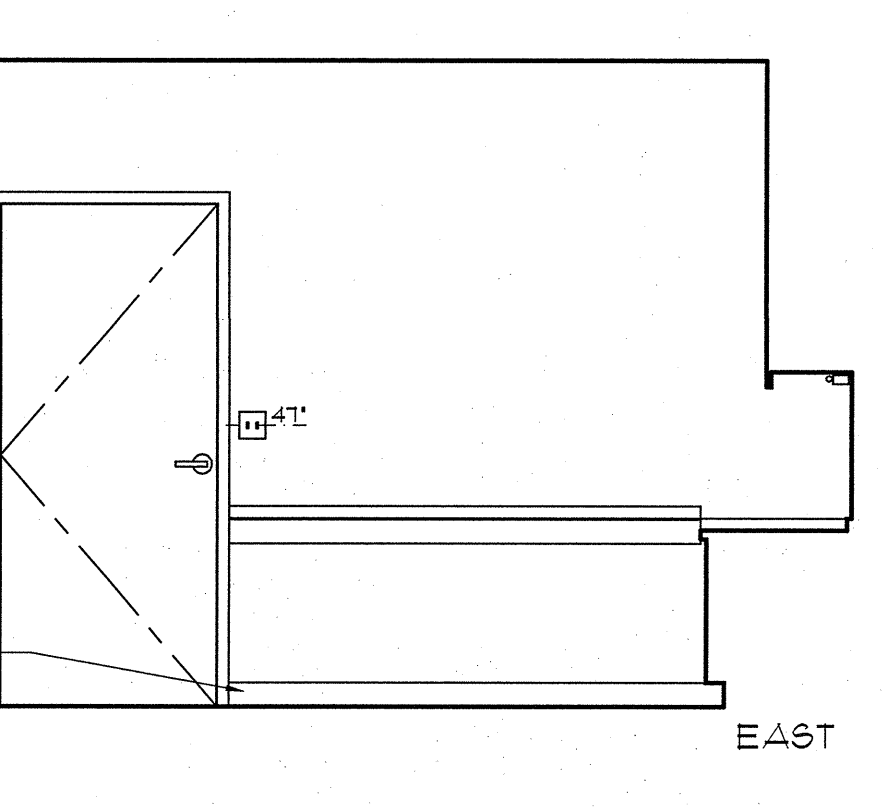
5 OFFICE 4143



5 OFFICE 4149



6 OFFICE 4153



- MATERIAL LEGEND**
- Division 05 Metals**
- 05 50 00.A SURFACE MOUNTED COUNTER SUPPORT BRACKET - SEE DETAIL D6/A10125
- Division 06 Wood, Plastics & Composites**
- 06 40 00.A 3/4" x 2" HARDWOOD TRIM
- Division 09 Finishes**
- 09 06 00.A BASE AS SCHEDULED IN SECTION 09 06 00
- Division 10 Specialties**
- 10 11 20.A TACK BOARD
- Division 12 Furnishings**
- 12 20 00.A HORIZONTAL SHADES
- 12 32 00.A PLASTIC LAMINATE-CLAD SOFFIT FASCIA PANEL

- LEGEND**
- POSSIBLE LOCATION FOR GEL DISPENSER (FOIC)
- SOAP DISPENSER (FOIC)
- PAPER TOWEL DISPENSER (FOIC)
- GLOVE DISPENSERS (FOIC)
- SHARPS CONTAINER (FOIC)
- NURSE CALL / FULL
- INTERCOM
- CODE CALL
- EQUIPMENT TAG (SEE SECTION 11100)
- NURSE CALL LIGHT
- DUPLEX RECEPTACLE W/ EMERGENCY POWER
- DUPLEX RECEPTACLE
- QUADPLEX RECEPTACLE W/ EMERGENCY POWER
- QUADPLEX RECEPTACLE
- MEDICAL GAS OUTLETS: A - MEDICAL AIR O - OXYGEN V - VACUUM
- SLIDE
- JUNCTION BOX
- LIGHT SWITCH
- TELEPHONE/DATA JACK COMBINED (STANDARD 4 JACKS PER PLATE)
- WALL MOUNTED TELEPHONE
- THERMOSTAT
- 24 HR CLOCK
- BATTERY CLOCK
- FIRE STROBE LIGHT

