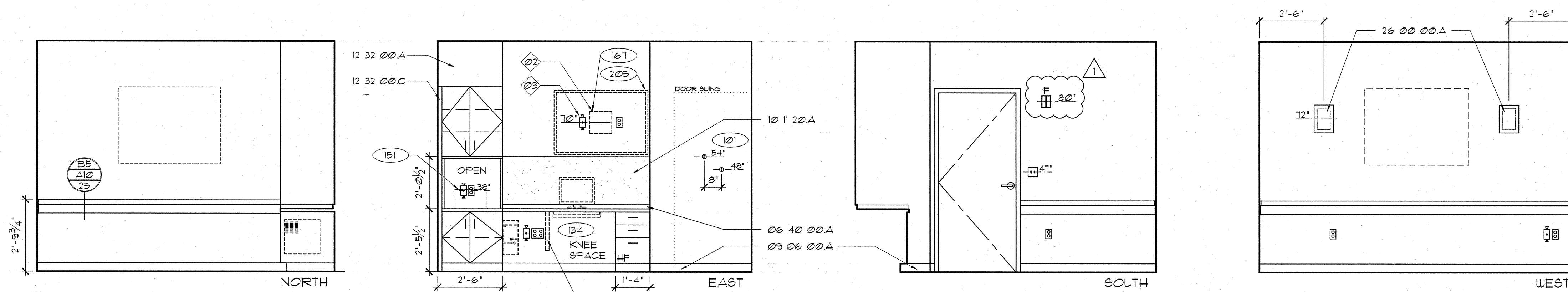
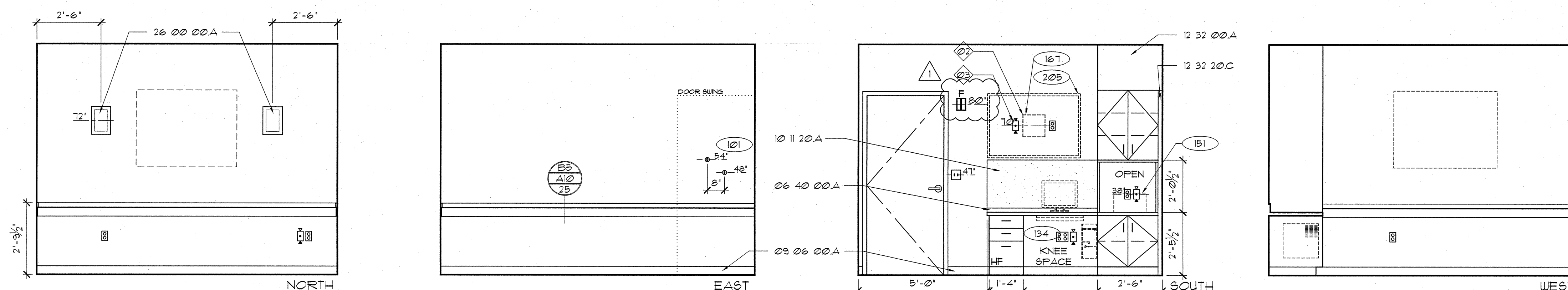


A

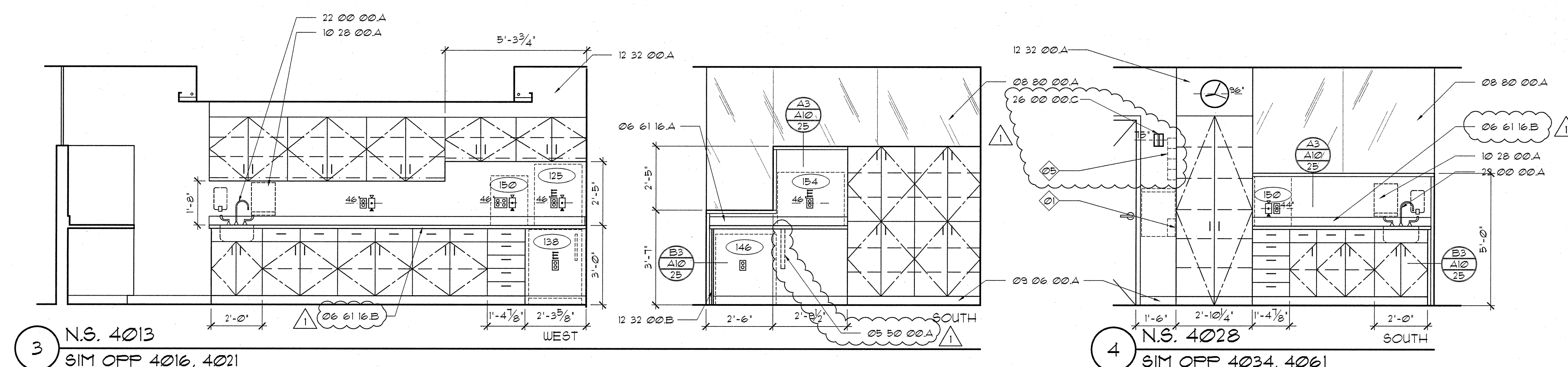


1 COUNSEL 4008

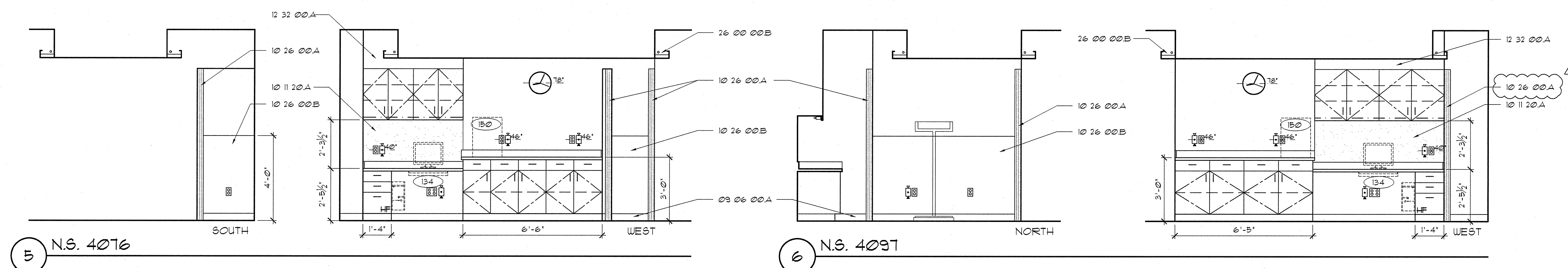
B

2 COUNSEL 4009
SIM 4018, 4122 SIM OFF 4046

C

3 N.S. 4013
SIM OFF 4016, 4021

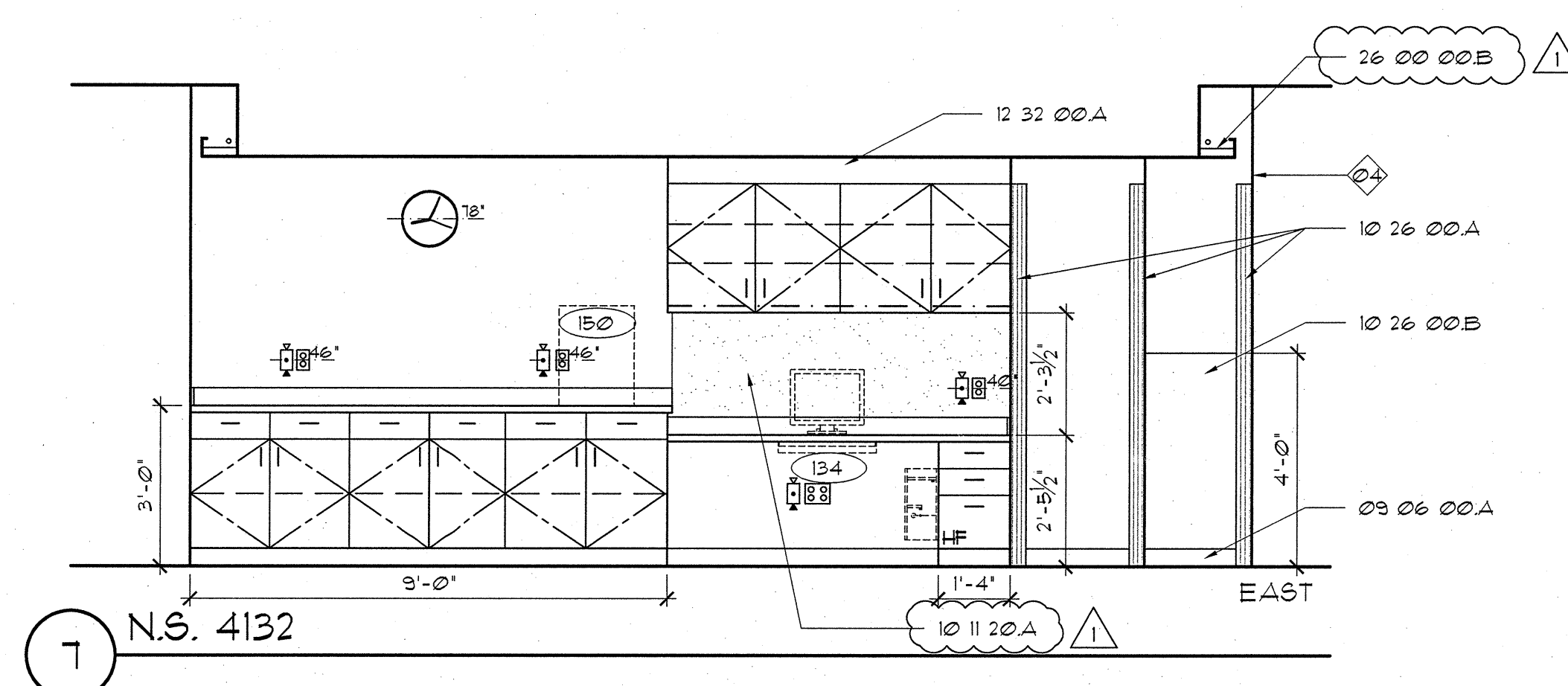
D



5 N.S. 4076

6 N.S. 4097

E



7 N.S. 4132

MATERIAL LEGEND

Division 05 Metals

05 50 00.A SURFACE MOUNTED COUNTER SUPPORT BRACKET - SEE DETAIL D6/A1025

Division 06 Wood, Plastics & Composites

06 40 00.A 3/4" x 2" HARDWOOD TRIM

06 61 16.A SOLID SURFACE COUNTER AND INTEGRAL BACK SPLASH

B SOLID SURFACE COUNTERTOP & INTEGRAL BACKSPLASH W/ INTEGRAL SINK

Division 08 Openings

08 20 00.A 1/2" TEMPERED GLAZING WITH CUSTOM PATTERN FILM (G-15)

Division 09 Finishes

09 06 00.A BASE AS SCHEDULED IN SECTION 09 06 00

09 30 00.T TILE AS SCHEDULED IN SECTION 09 30 00

Division 10 Specialties

10 11 20.A TACK BOARD

10 26 00.A CORNER GUARD (1"-2" AFF UNLESS OTHERWISE NOTED)

B WALL PROTECTION (WP-01)

10 28 00.A PAPER TOWEL DISPENSER (PT-02)

Division 12 Furnishings

12 32 00.A PLASTIC LAMINATE-CLAD SOFFIT FASCIA PANEL

B 1-1/2" PLASTIC LAMINATE-CLAD END PANEL

C PLASTIC LAMINATE-CLAD FILLER PANEL

Division 22 Plumbing

22 00 00.A GOOSENECK & WRIST BLADES

Division 26 Electrical

26 00 00.A WALL SCONCE

B COVE LIGHT AS SCHEDULED

C NURSE CALL DOME LIGHT

GENERAL NOTES

01 GEL DISPENSER ITEM MOUNTED TO SIDE OF CASEWORK

02 INSTALL PER MANUFACTURER'S METAL STUD KIT INSTRUCTIONS

03 COORDINATE LOCATION OF POWER AND DATA J-BOX WITH FINAL LOCATION OF TV BRACKET. POWER AND DATA J-BOXES TO BE PLACED BEHIND MONITOR BUT ASSURED THAT THE DATA AND POWER CONNECTION CAN BE MADE WITHOUT SHARP BENDS IN CONNECTOR LEADS.

04 WALL PROTECTION ON NORTH FACE OF COLUMN

05 GLOVES BOX MOUNTED TO SIDE OF CASEWORK

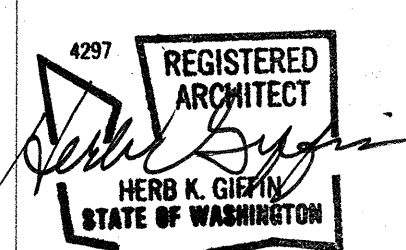
LEGEND

POSSIBLE LOCATION FOR GEL DISPENSER (FOIC)	DUPLEX RECEPTACLE W/ EMERGENCY POWER
SOAP DISPENSER (FOIC)	DUPLEX RECEPTACLE
PAPER TOWEL DISPENSER (FOIC)	QUADPLEX RECEPTACLE W/ EMERGENCY POWER
GLOVE DISPENSERS (FOIC)	QUADPLEX RECEPTACLE
SHARPS CONTAINER (FOIC)	MEDICAL GAS OUTLETS: A - MEDICAL AIR O - OXYGEN V - VACUUM
NURSE CALL / PULL	SLIDE
INTERCOM	JUNCTION BOX
CODE CALL	LIGHT SWITCH
EQUIPMENT TAG (SEE SECTION 1100)	TELEPHONE/DATA JACK COMBINED (STANDARD 4 JACKS PER PLATE)
NURSE CALL LIGHT	WALL MOUNTED TELEPHONE
	THERMOSTAT
	24 HR CLOCK
	BATTERY CLOCK
	FIRE STROBE LIGHT

SEC. 12320 CASEWORK LEGEND

(UNLESS OTHERWISE NOTED)

NOT TO SCALE	OPEN CABINET W/ ADJ. SHELVES
	2 ADJ. SHELVES
	UNDERCABINET LIGHT FIXTURE W/P-LAM VALANCE
	UPPER CABINET DOOR WITH PULL
	P-LAM COUNTERTOP AND 4" BACKSPLASH (OR OTHERWISE NOTED)
	BASE CABINET
	DRAWER WITH PULL
	KEYBOARD TRAY FOIC
	OPEN-KNEE SPACE
	LOCK
	HANGING FILE DRAWER = HF
	LATERAL FILE DRAWER = LF

Giffin • Bolte • Jurgens
ARCHITECTS P.C.815 S.W. SECOND AVENUE - PORTLAND, OREGON 97204
(503) 223-0992 www.gbjarch.com FAX (503) 294-3961

MultiCare

EMERGENCY DEPARTMENT & CANCER CENTER EXPANSION

TACOMA, WASHINGTON

△ CCD 05

01-21-09

Date 09-26-2008

Scale 3/8" = 1' - 0"

Drawn By MQ

Job No. 4034

INTERIOR
ELEVATIONSA9
409