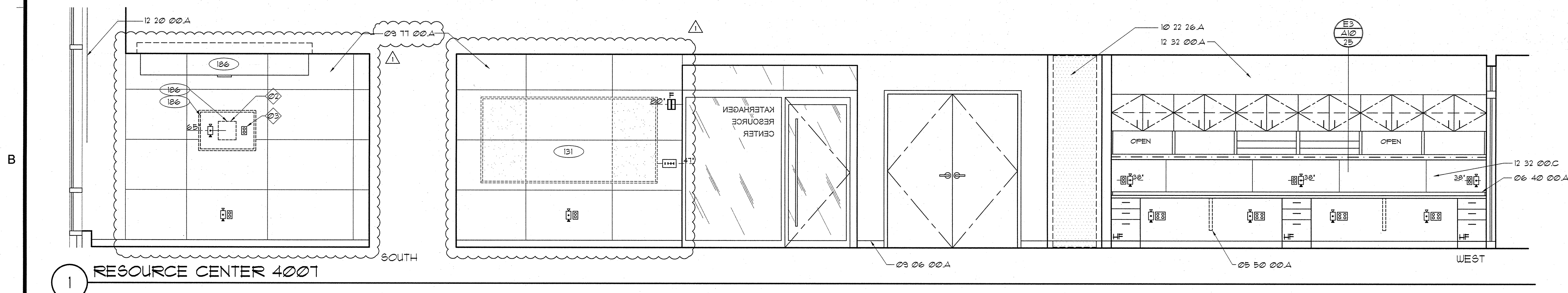
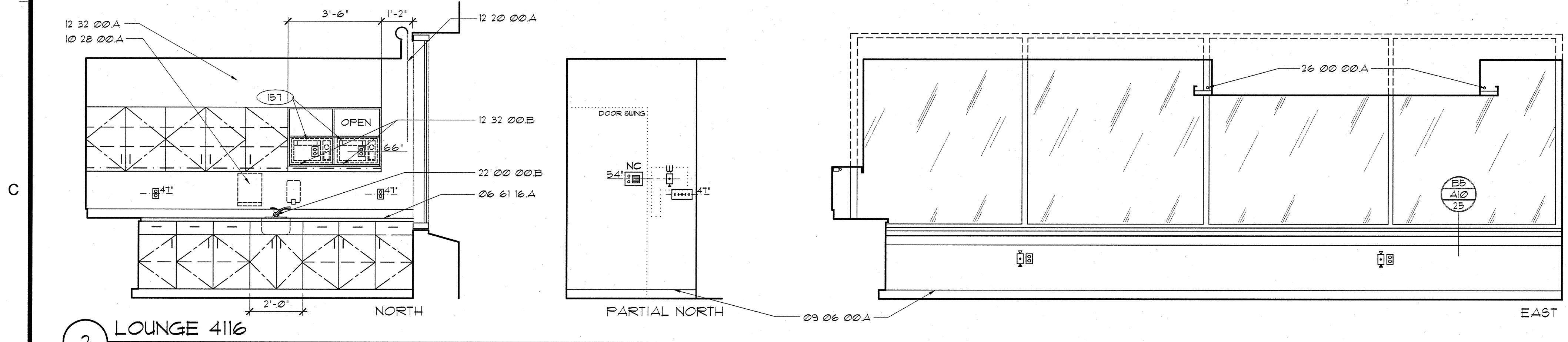


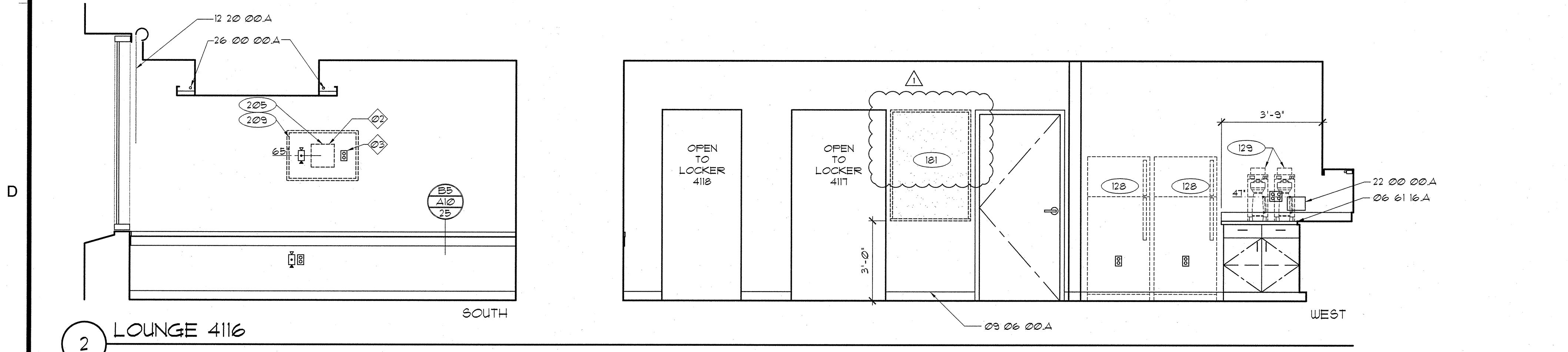
1 RESOURCE CENTER 400T



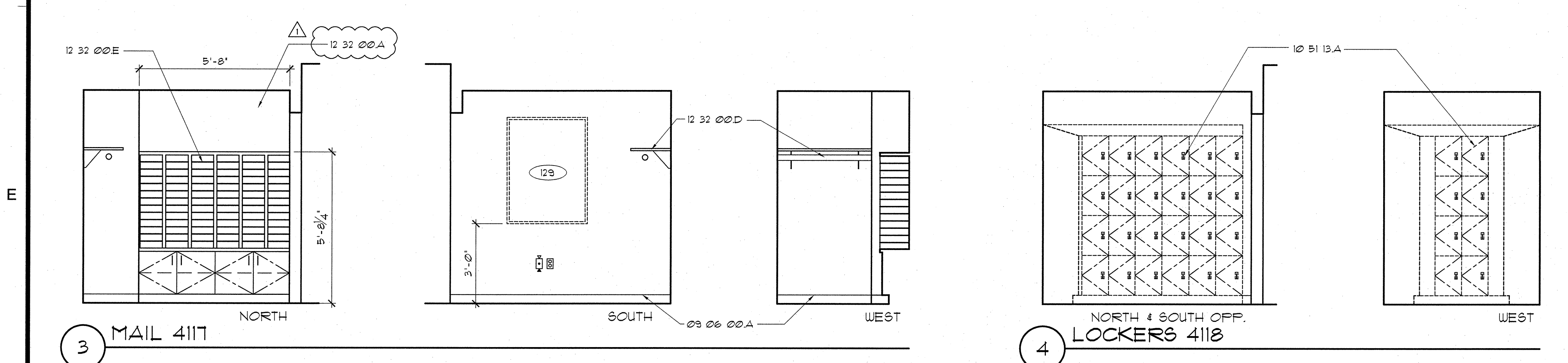
1 RESOURCE CENTER 400T



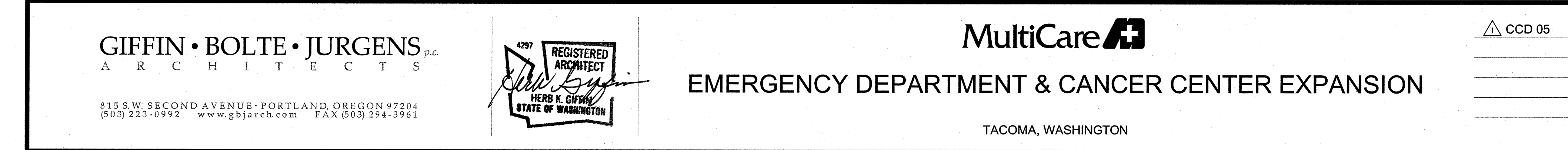
2 LOUNGE 4116



2 LOUNGE 4116



3 MAIL 4117



4 LOCKERS 4118

**MATERIAL LEGEND**

**Division 05 Metals**

05 50 00.A SURFACE MOUNTED COUNTER SUPPORT BRACKET - SEE DETAIL D6/A1025

**Division 06 Wood, Plastics & Composites**

06 40 00.A 3/4" x 2" HARDWOOD TRIM

06 61 16.A SOLID SURFACE COUNTERTOP AND INTEGRAL BACK SPLASH WITH INTEGRAL SINK

**Division 09 Finishes**

09 06 00.A TILE AS SCHEDULED IN SECTION 09 06 00

09 30 00.A TILE AS SCHEDULED IN SECTION 09 06 00

B TILE T-10

**Division 10 Specialties**

10 11 20.A TACK BOARD

10 22 26.A FOLDING PANEL PARTITION

10 26 00.A WALL PROTECTION (WP-03)

10 28 00.A PAPER TOWEL DISPENSER (PT-02)

10 51 13.A METAL LOCKERS (ML-01)

**Division 11 Equipment**

11 52 13.A PROJECTION SCREEN

**Division 12 Furnishings**

12 20 00.A HORIZONTAL SHADES

12 32 00.A PLASTIC LAMINATE-CLAD SOFFIT FASCIA PANEL

B 16" DEEP PLASTIC LAMINATE-CLAD SHELF FOR MICROWAVE WITH 1-1/2" RADIUS CORNERS

C FULL HEIGHT PLASTIC LAMINATE-CLAD BACKSPLASH

D 12" DEEP PLASTIC LAMINATE-CLAD SHELF WITH ROD AND SHELF/ROD BRACKETS - SEE DETAIL E6/A1025

E ACRYLIC HORIZONTAL FORM SLOTS

**Division 22 Plumbing**

22 00 00.A RECESSED CONNECTION BOX FOR COFFEE MACHINE

B SINGLE LEVER FAUCET

**Division 26 Electrical**

26 00 00.A COVE LIGHT AS SCHEDULED

**GENERAL NOTES**

01 NOT USED.

02 INSTALL PER MANUFACTURER'S METAL STUD KIT INSTRUCTIONS.

03 COORDINATE LOCATION OF POWER AND DATA J-BOX WITH FINAL LOCATION OF TV BRACKET. POWER AND DATA J-BOXES TO BE PLACED BEHIND MONITOR BUT ASSURED THAT THE DATA AND POWER CONNECTION CAN BE MADE WITHOUT SHARP BENDS IN CONNECTOR LEADS.

**LEGEND**

POSSIBLE LOCATION FOR GEL DISPENSER (FOIC)

SOAP DISPENSER (FOIC)

PAPER TOWEL DISPENSER (FOIC)

GLOVE DISPENSERS (FOIC)

SHARPS CONTAINER (FOIC)

NURSE CALL / FULL INTERCOM

CODE CALL

EQUIPMENT TAG (SEE SECTION 1100)

NURSE CALL LIGHT

DUPLEX RECEPTACLE W/ EMERGENCY POWER (FOIC)

DUPLEX RECEPTACLE

QUADPLEX RECEPTACLE W/ EMERGENCY POWER

QUADPLEX RECEPTACLE

MEDICAL GAS OUTLETS: A - MEDICAL AIR O - OXYGEN V - VACUUM

SLIDE

JUNCTION BOX

LIGHT SWITCH

TELEPHONE/DATA JACK COMBINED (STANDARD 4 JACKS PER PLATE)

WALL MOUNTED TELEPHONE

THERMOSTAT

24 HR CLOCK

BATTERY CLOCK

FIRE STROBE LIGHT

**SEC. 12320 CASEWORK LEGEND**  
(UNLESS OTHERWISE NOTED)

OPEN CABINET W/ ADJ. SHELVES

2 ADJ. SHELVES

UNDERCABINET LIGHT FIXTURE W/P-LAM VALANCE

UPPER CABINET DOOR WITH FULL

P-LAM COUNTERTOP AND 4" BACKSPLASH (OR OTHERWISE NOTED)

BASE CABINET

DRAWER WITH FULL

KEYBOARD TRAY FOIC

OPEN-KNEE SPACE

LOCK

HANGING FILE DRAWER - HF

LATERAL FILE DRAWER - LF