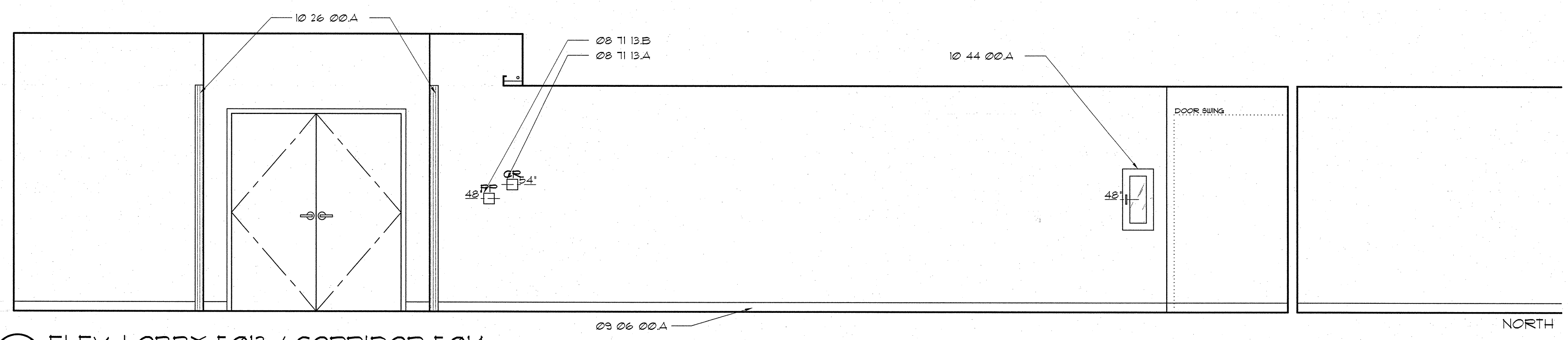
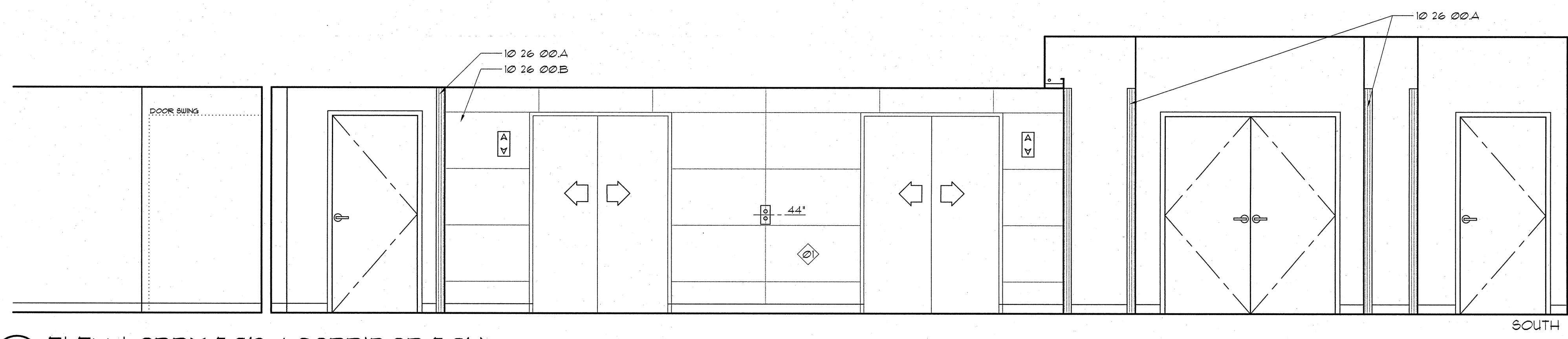


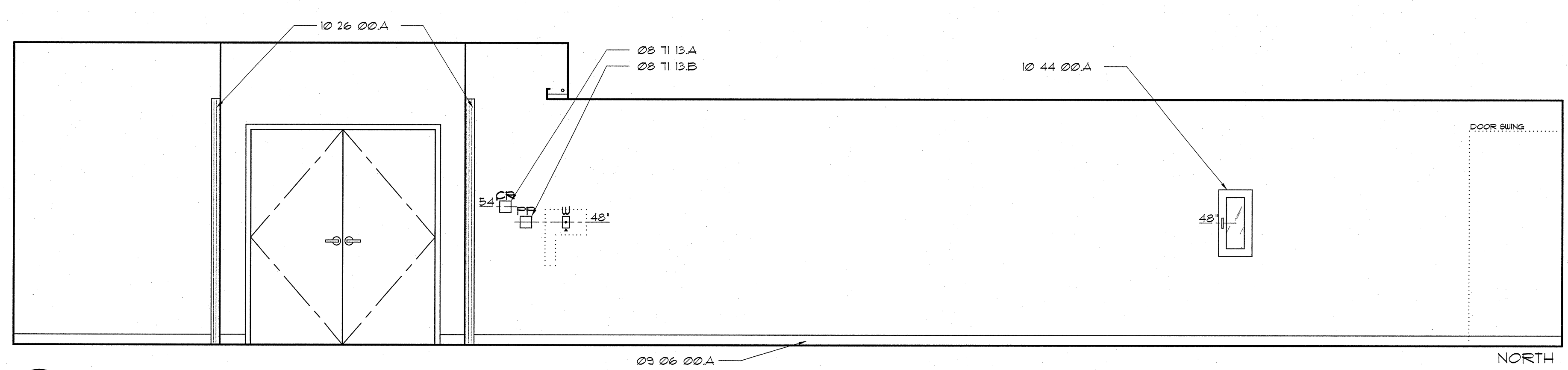
A
B
C
D
E



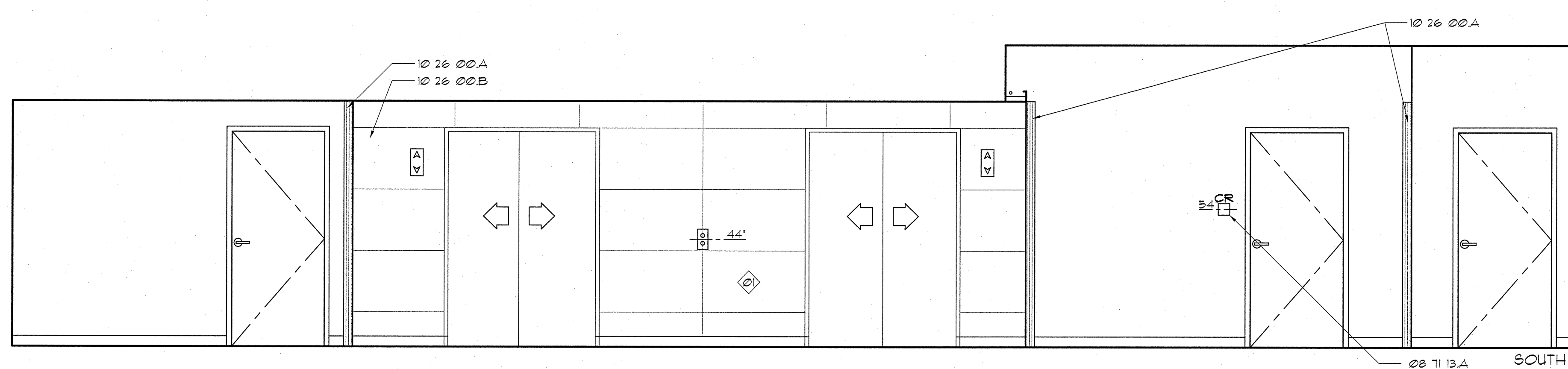
1 ELEV. LOBBY 5013 / CORRIDOR 5014



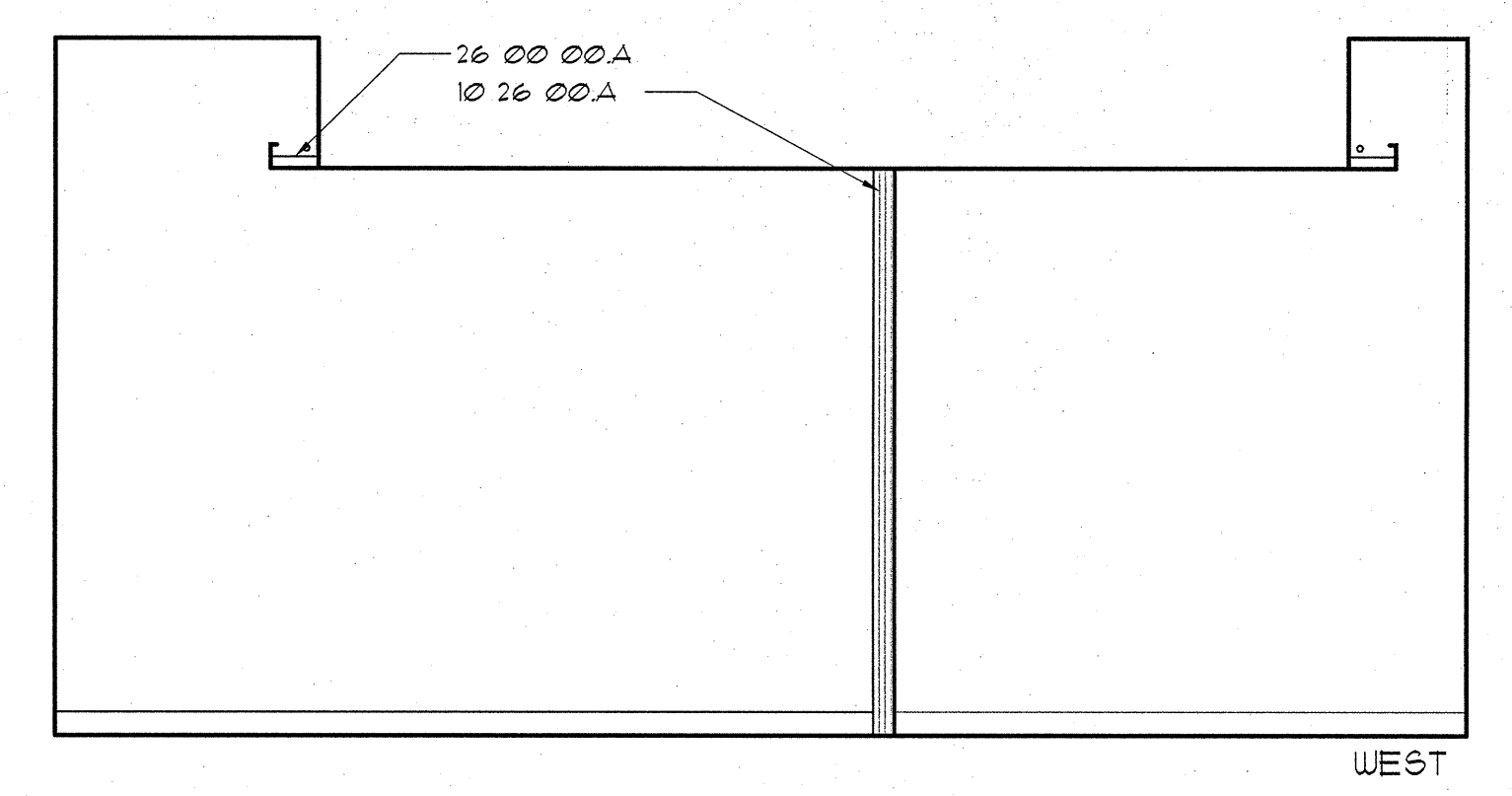
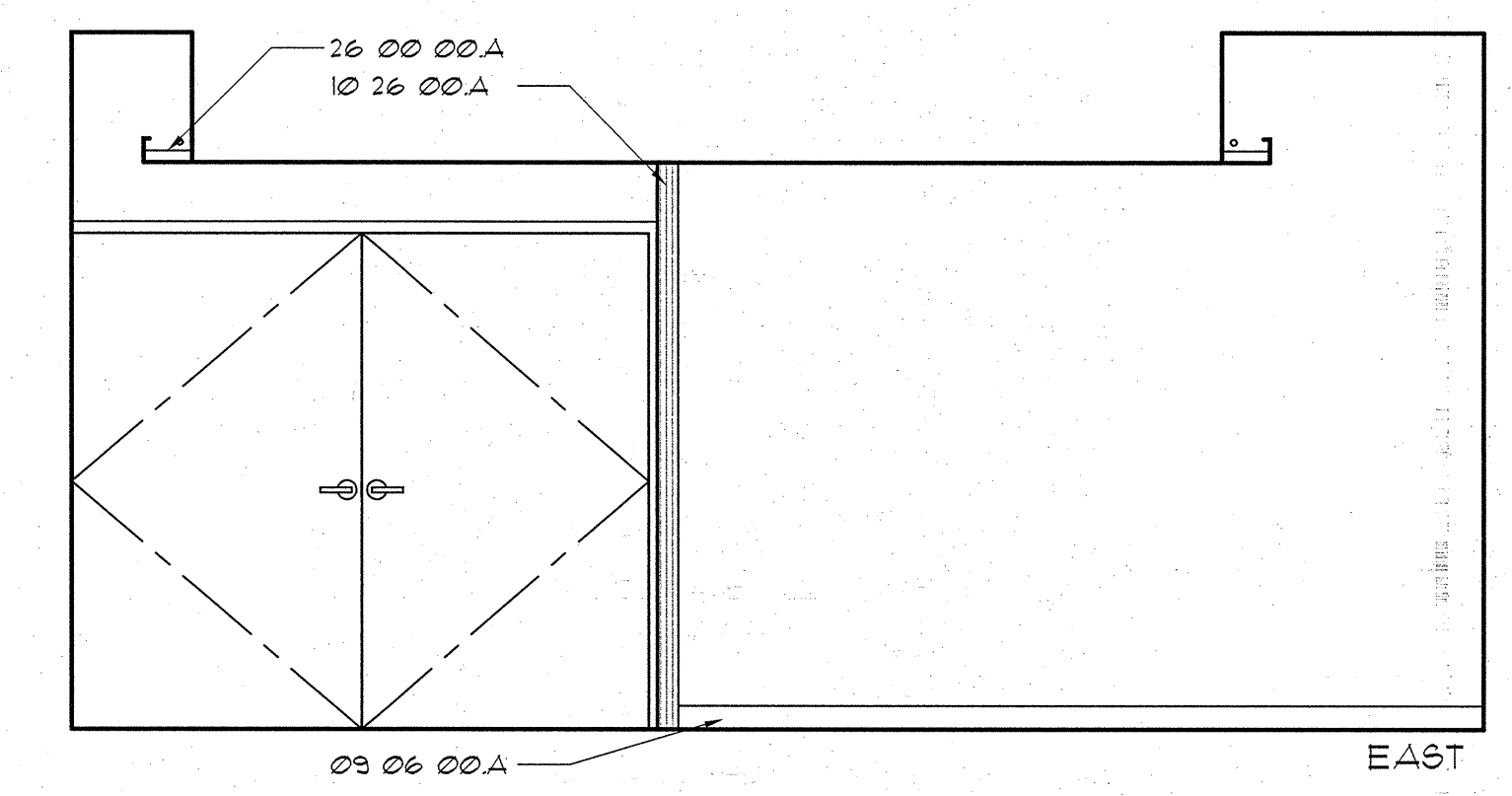
1 ELEV. LOBBY 5013 / CORRIDOR 5014



2 ELEV. LOBBY 6004 / ALCOVE 6004A



2 ELEV. LOBBY 6004 / ALCOVE 6004A



MATERIAL LEGEND

Division 08 Openings

08 11 13. A CARD READER
B PUSH PLATE

Division 09 Finishes

09 06 00. A BASE AS SCHEDULED IN SECTION 09 06 00

Division 10 Specialties

10 26 00. A CORNER GUARD (1'-2" AFF UNLESS OTHERWISE NOTED)
B WALL PROTECTION (WP-03)
10 44 00. A RECESSED FIRE EXTINGUISHER CABINET

Division 26 Electrical

26 00 00. A COVE LIGHT AS SCHEDULED

GENERAL NOTES

WALL PROTECTION EXTENDS FULL HEIGHT.

LEGEND

POSSIBLE LOCATION FOR GEL DISPENSER (FOIC)
SOAP DISPENSER (FOIC)
PAPER TOWEL DISPENSER (FOIC)
GLOVE DISPENSERS (FOIC)
SHARPS CONTAINER (FOIC)
NURSE CALL / PULL
INTERCOM
CODE CALL
EQUIPMENT TAG (SEE SECTION 1100)
NURSE CALL LIGHT

DUPLEX RECEPTACLE W/ EMERGENCY POWER
DUPLEX RECEPTACLE
QUADPLEX RECEPTACLE W/ EMERGENCY POWER
QUADPLEX RECEPTACLE
MEDICAL GAS OUTLETS:
A - MEDICAL AIR
O - OXYGEN
V - VACUUM
SLIDE
JUNCTION BOX
LIGHT SWITCH
TELEPHONE/DATA JACK COMBINED (STANDARD 4 JACKS PER PLATE)
WALL MOUNTED TELEPHONE
THERMOSTAT
24 HR CLOCK
BATTERY CLOCK
FIRE STROBE LIGHT

SEC. 12320 CASEWORK LEGEND
(UNLESS OTHERWISE NOTED)

NOT TO SCALE

OPEN CABINET W/ ADJ. SHELVES
2 ADJ. SHELVES
UNDERCABINET LIGHT FIXTURE W/P-LAM VALANCE
UPPER CABINET DOOR WITH PULL
P-LAM COUNTERTOP AND 4" BACKSPASH (OR OTHERWISE NOTED)
BASE CABINET
DRAWER WITH PULL
KEYBOARD TRAY F.O.I.O.
OPEN-KNEE SPACE
LOCK
HANGING FILE DRAWER = HF
LATERAL FILE DRAWER = LF