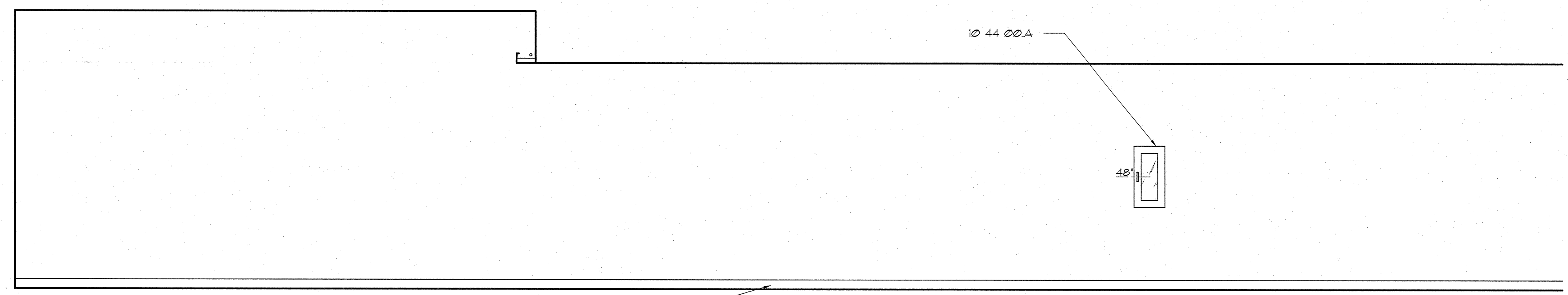
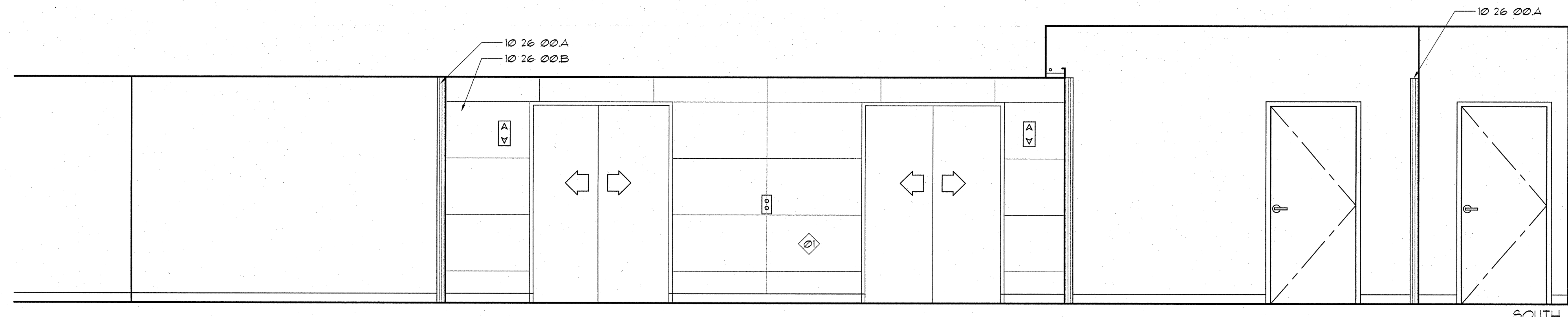


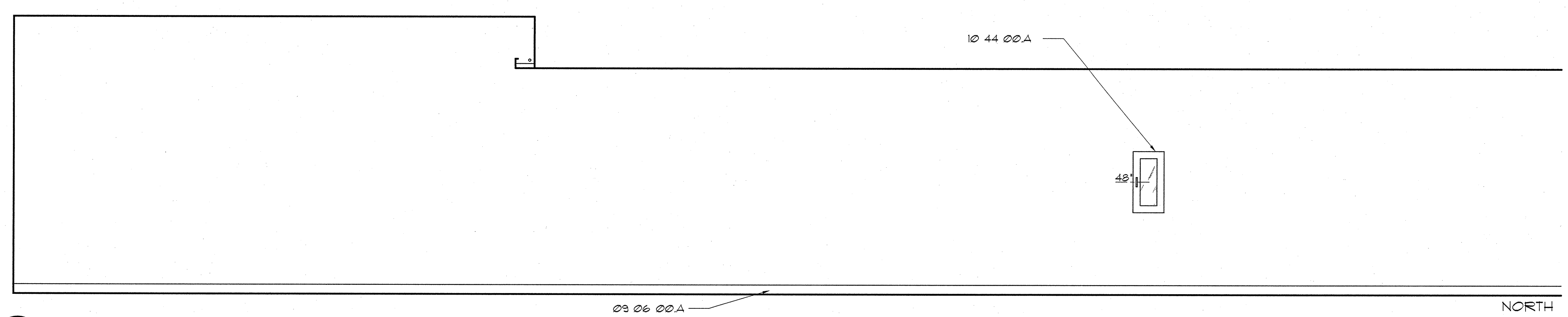
A  
B  
C  
D  
E



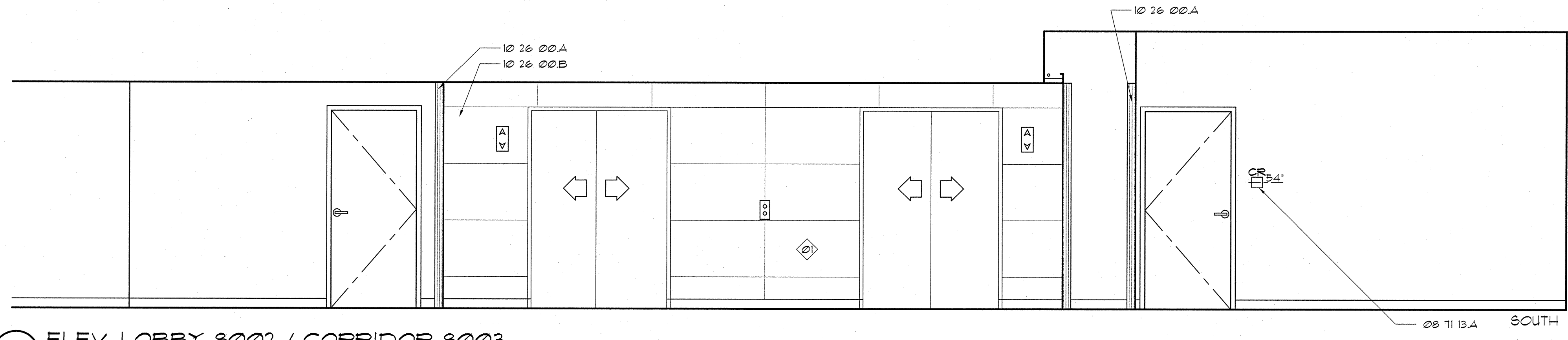
1 CORRIDOR 1003 / ELEV. LOBBY 1004 / CORRIDOR 1005



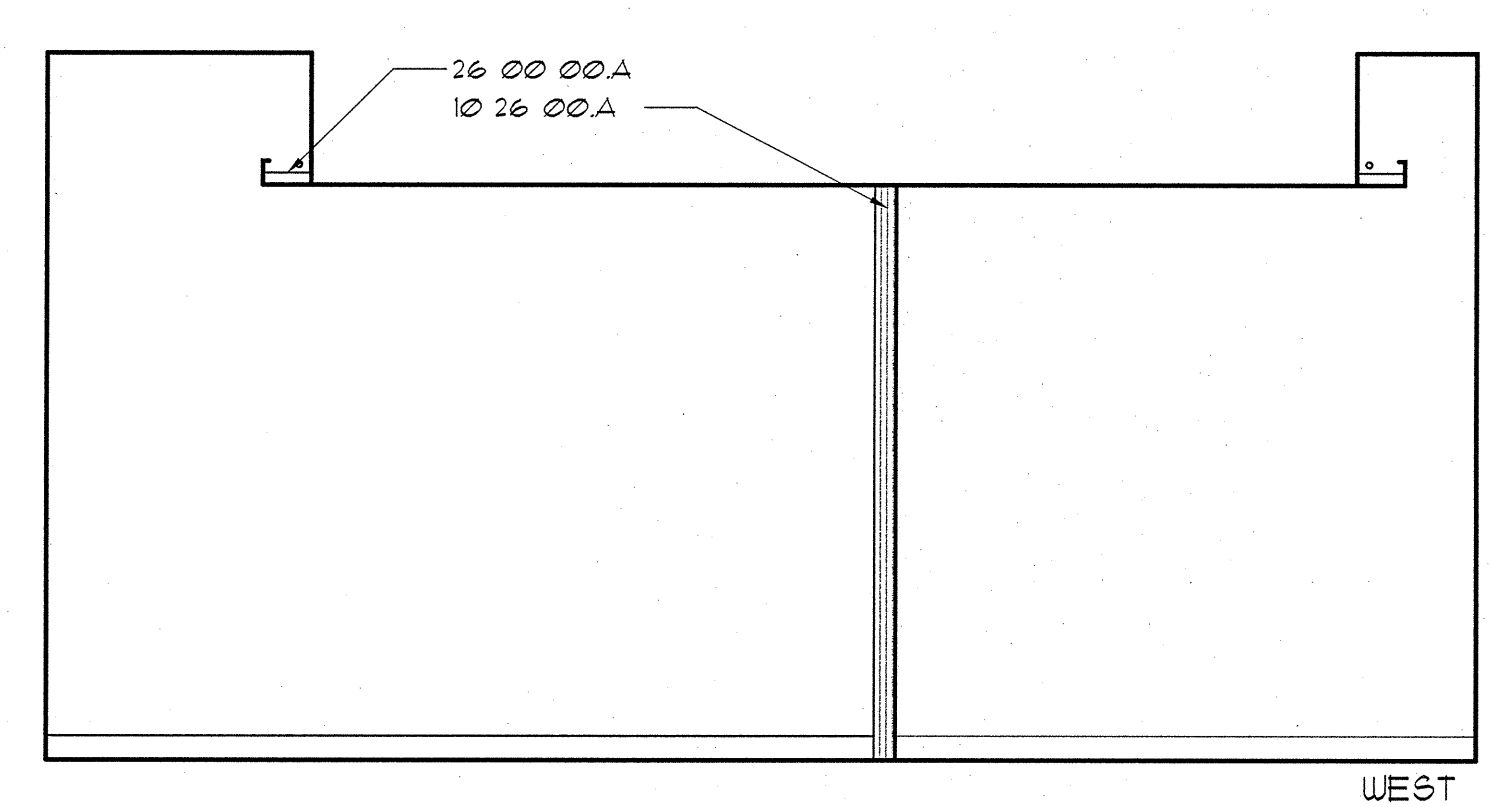
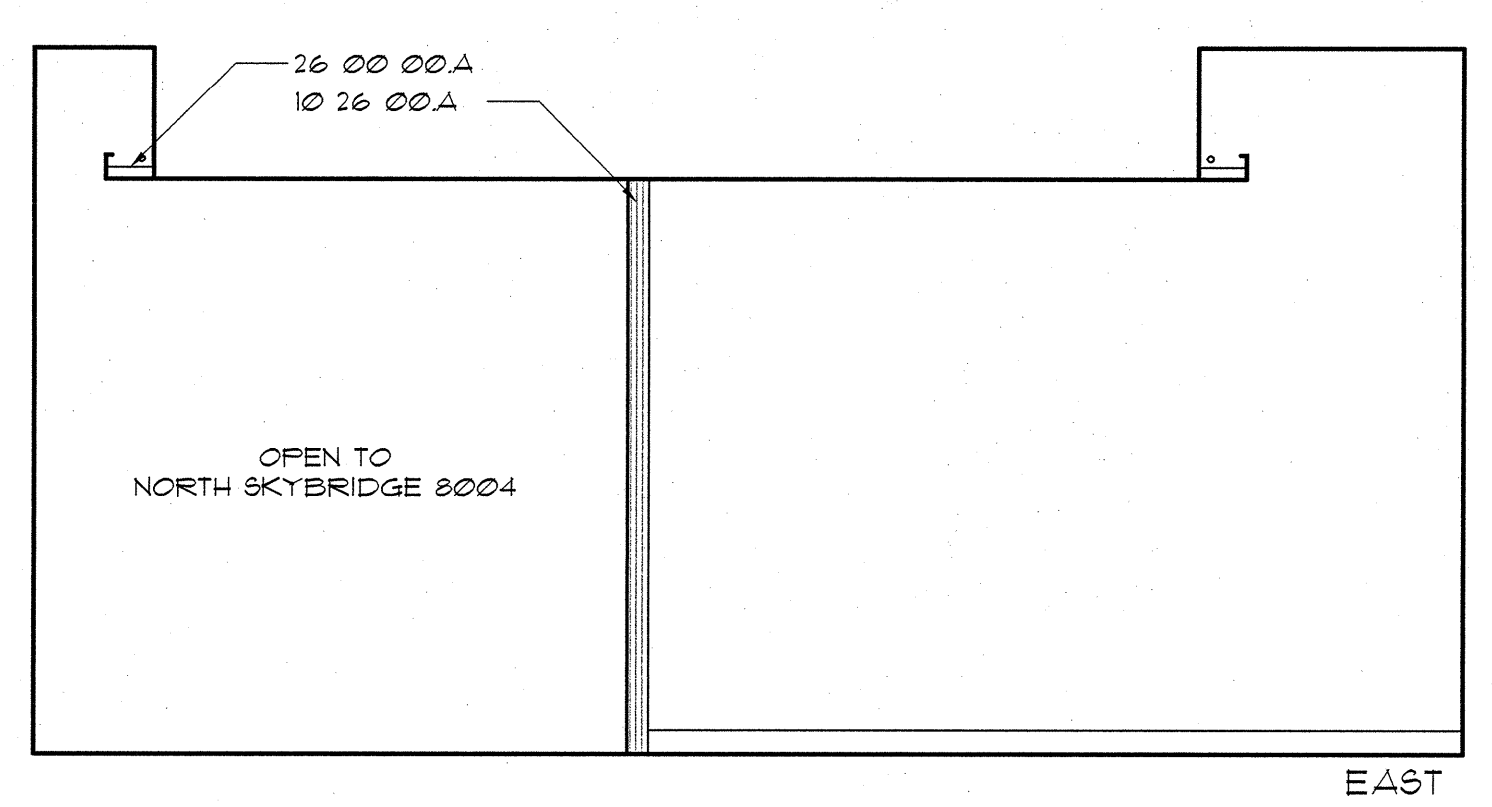
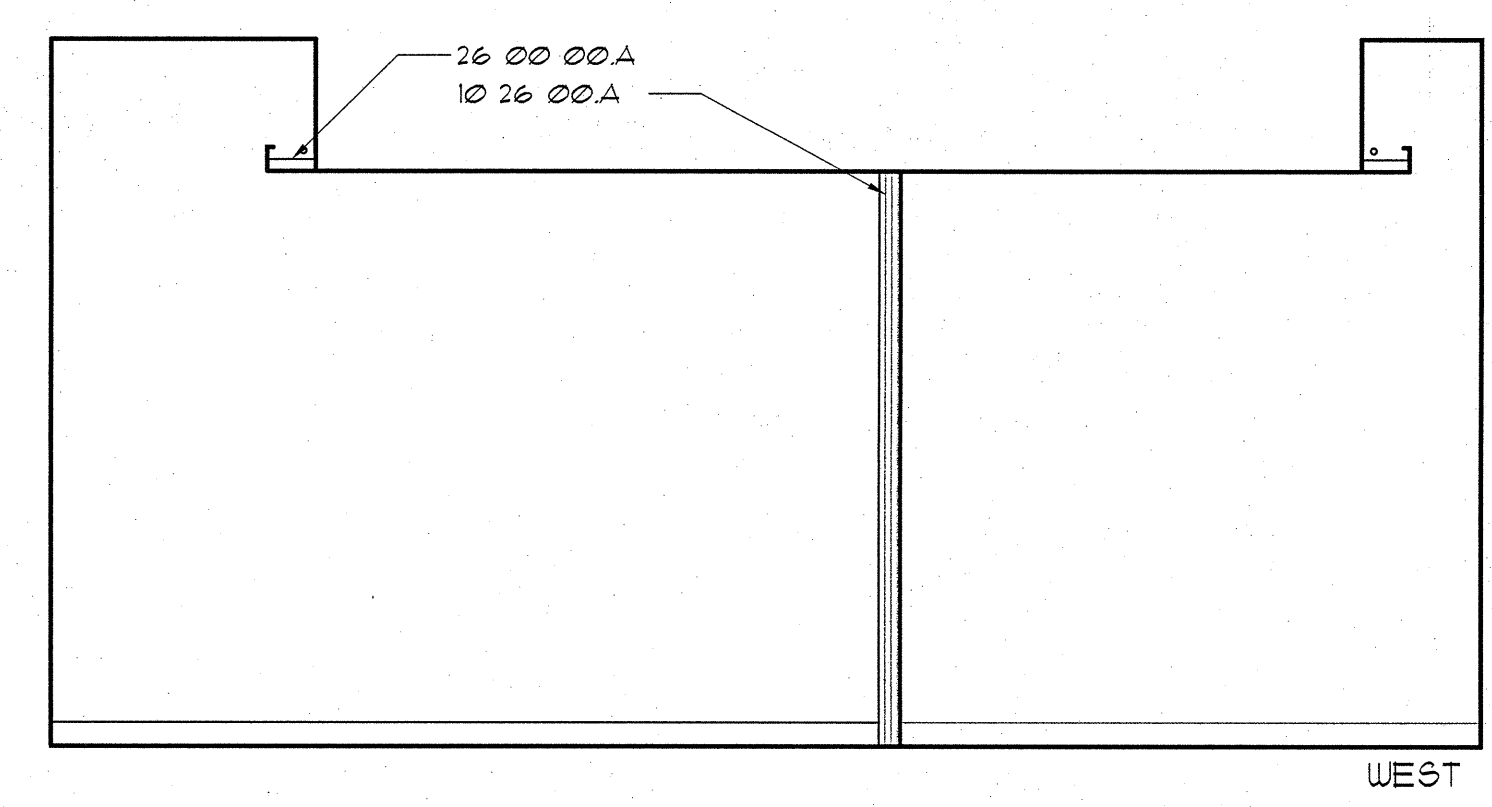
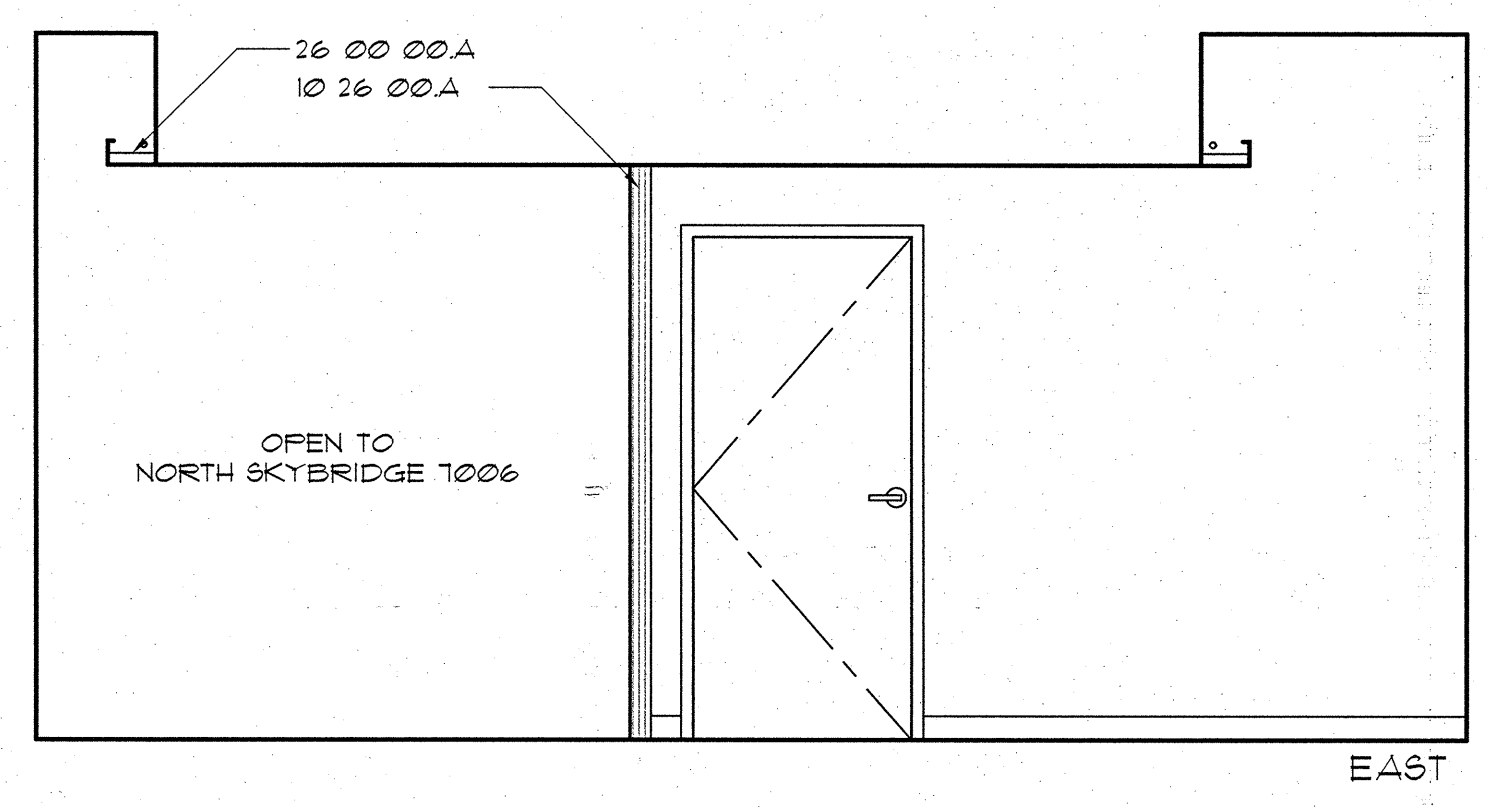
1 CORRIDOR 1003 / ELEV. LOBBY 1004 / CORRIDOR 1005



2 ELEV. LOBBY 8002 / CORRIDOR 8003



2 ELEV. LOBBY 8002 / CORRIDOR 8003



- MATERIAL LEGEND**
- Division 08 Openings**
- 08 11 13. A CARD READER
- Division 09 Finishes**
- 09 06 00. A BASE AS SCHEDULED IN SECTION 09 06 00
- Division 10 Specialties**
- 10 26 00. A CORNER GUARD (11-2" AFF UNLESS OTHERWISE NOTED)
  - B WALL PROTECTION (WP-03)
  - 10 44 00. A RECESSED FIRE EXTINGUISHER CABINET
- Division 26 Electrical**
- 26 00 00. A COVE LIGHT AS SCHEDULED
- GENERAL NOTES**
- WALL PROTECTION EXTENDS FULL HEIGHT.

- LEGEND**
- |                                            |                                                                     |
|--------------------------------------------|---------------------------------------------------------------------|
| POSSIBLE LOCATION FOR GEL DISPENSER (FOIC) | DUPLEX RECEPTACLE W/ EMERGENCY POWER                                |
| SOAP DISPENSER (FOIC)                      | DUPLEX RECEPTACLE                                                   |
| PAPER TOWEL DISPENSER (FOIC)               | QUADPLEX RECEPTACLE W/ EMERGENCY POWER                              |
| GLOVE DISPENSERS (FOIC)                    | QUADPLEX RECEPTACLE                                                 |
| SHARPS CONTAINER (FOIC)                    | MEDICAL GAS OUTLETS:<br>A - MEDICAL AIR<br>O - OXYGEN<br>V - VACUUM |
| NURSE CALL / FULL                          | SLIDE                                                               |
| INTERCOM                                   | JUNCTION BOX                                                        |
| CODE CALL                                  | LIGHT SWITCH                                                        |
| EQUIPMENT TAG (SEE SECTION 1100)           | TELEPHONE/DATA JACK COMBINED (STANDARD 4 JACKS PER PLATE)           |
| NURSE CALL LIGHT                           | WALL MOUNTED TELEPHONE                                              |
|                                            | THERMOSTAT                                                          |
|                                            | 24 HR CLOCK                                                         |
|                                            | BATTERY CLOCK                                                       |
|                                            | FIRE STROBE LIGHT                                                   |
- SEC. 12320 CASEWORK LEGEND**  
(UNLESS OTHERWISE NOTED)

