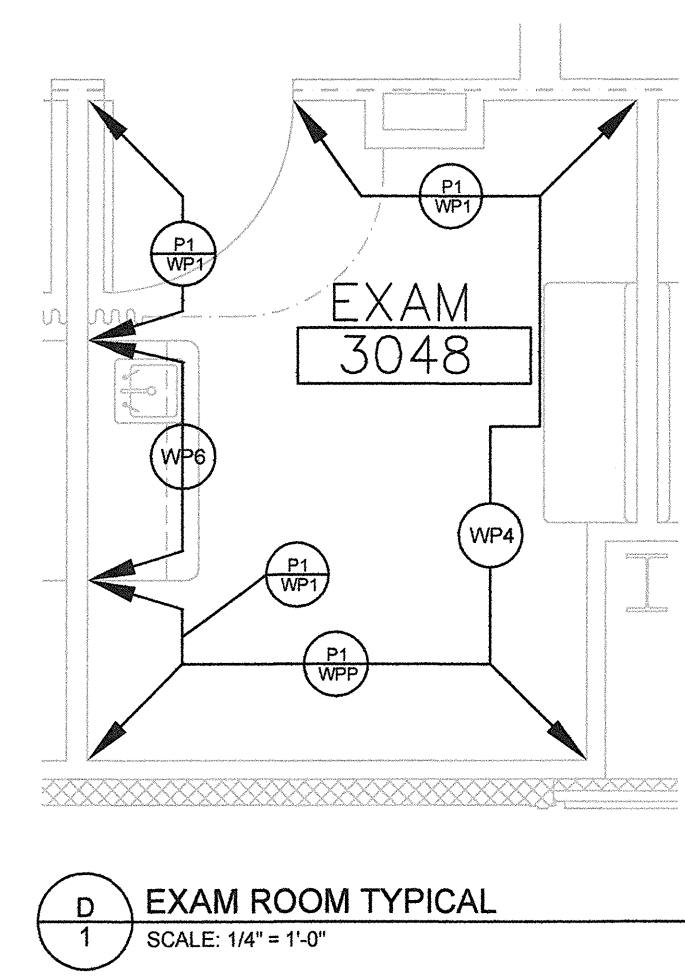
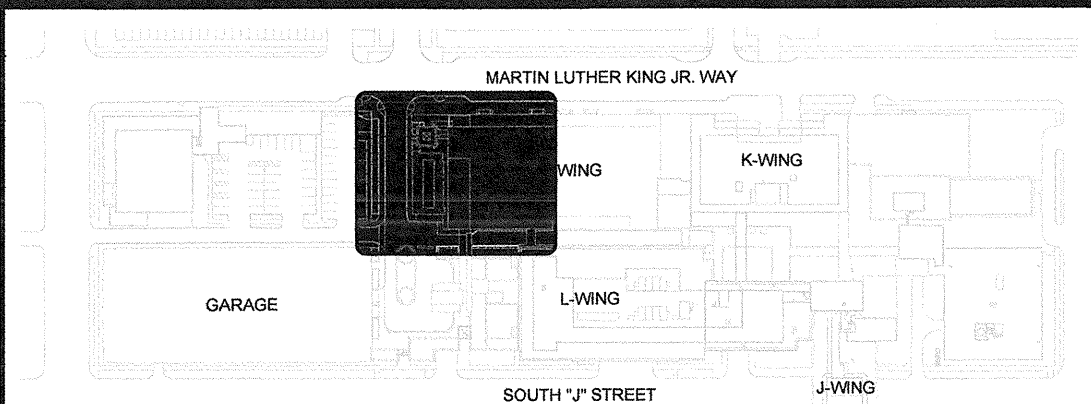
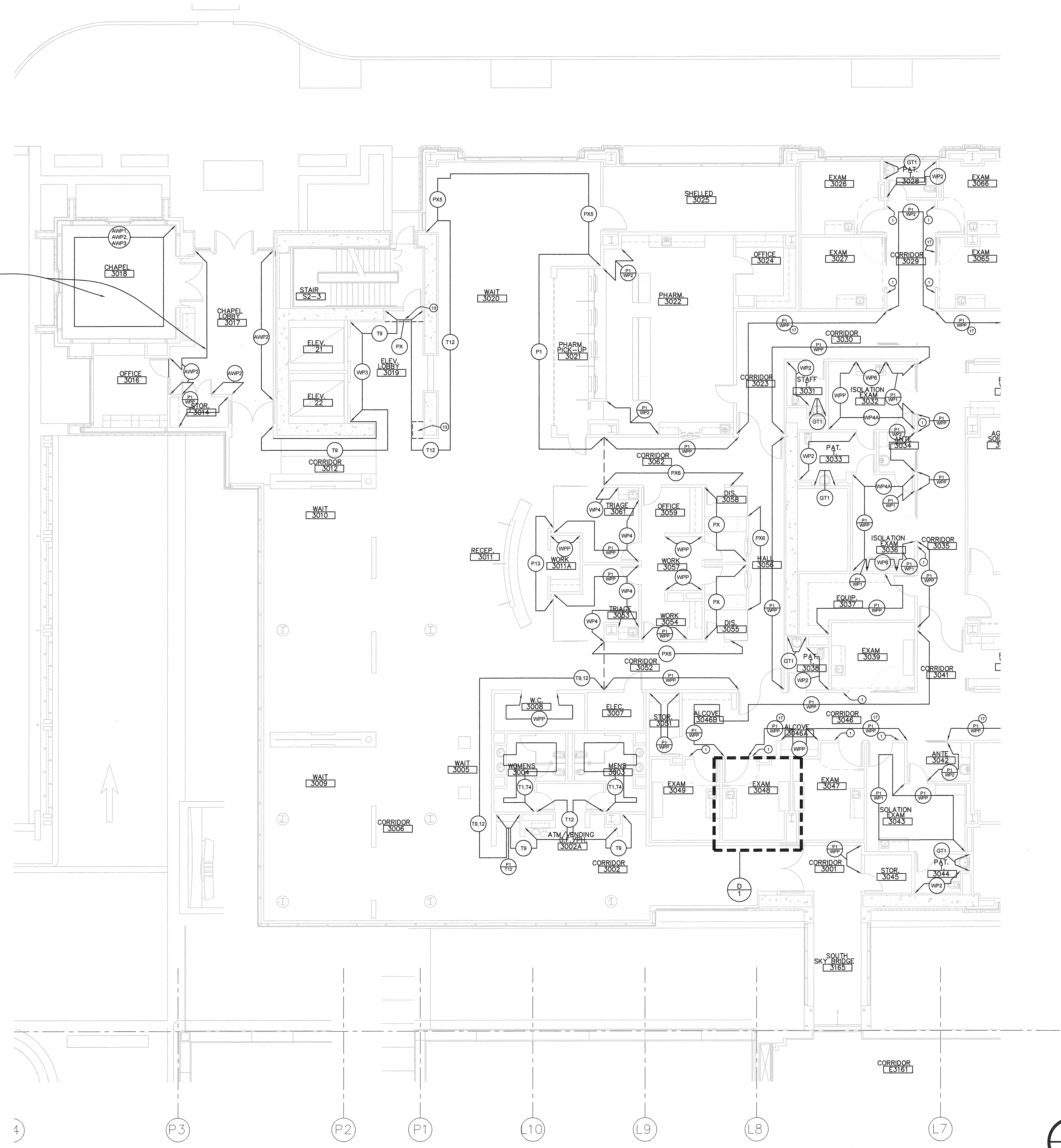


A
B
C
D
E



NOTE:
SEE INTERIOR
ELEVATIONS
FOR EXTENT OF
PANELS & AWT
TRIMWOOD
PANELS.



KEY PLAN

- GENERAL NOTES:
- A. ALL SOFFITS TO BE PAINTED P-14 UNLESS OTHERWISE NOTED.
 - B. SEE INTERIOR ELEVATIONS FOR EXTENT OF FINISHES
 - C. SEE INTERIOR ELEVATIONS FOR ORIENTATION FOR TYPICAL EXAM ROOM FINISHES.
 - D. SEE INTERIOR ELEVATIONS FOR ALL WALL TILE PATTERNS.

- KEYNOTES:
- 1. WP4A PANEL: SEE ELEVATIONS AND DETAILS FOR EXACT HEIGHT AND LOCATION.
 - 2. PARTIAL HEIGHT PANEL: SEE ELEVATIONS AND DETAILS FOR EXACT HEIGHT AND LOCATION.
 - 3. PAINT SOFFIT TO MATCH ADJACENT ACCENT WALL COLOR.
 - 4. PAINT SOFFIT P-13.
 - 5. PAINT SOFFIT P-14.
 - 6. NOT USED
 - 7. NURSE STATION 2125, PHYS 2127, NURSE STATION 3125 (GREEN) INCLUDES THE FOLLOWING MATERIALS: PL-6, TB-3, P-6. SEE ARCHITECTS ELEVATIONS AND RFS FOR LOCATIONS.
 - 8. NURSE STATION 2116 (PURPLE) INCLUDES THE FOLLOWING MATERIALS: PL-7, TB-4, P-7. SEE ARCHITECTS ELEVATIONS AND RFS FOR LOCATIONS.
 - 9. NURSE STATION 3136, PHYS. WORK 2113, PHYS. WORK 3136 (BLUE) INCLUDES THE FOLLOWING MATERIALS: PL-8, TB-5, P-8. SEE ARCHITECTS ELEVATIONS AND RFS FOR LOCATIONS.
 - 10. NURSE STATION 2081, PHYS. WORK 2086, PHYS. WORK 3069, NURSE STATION 3072 (BLUE) INCLUDES THE FOLLOWING MATERIALS: PL-9, TB-6, P-9. SEE ARCHITECTS ELEVATIONS AND RFS FOR LOCATIONS.
 - 11. NURSE STATION 2078, NURSE STATION 3079 (BROWN) INCLUDES THE FOLLOWING MATERIALS: PL-10, TB-7, P-10. SEE ARCHITECTS ELEVATIONS AND RFS FOR LOCATIONS.
 - 12. NURSE STATION 2074, PHYS. WORK 2072 INCLUDES THE FOLLOWING MATERIALS: PL-11, TB-8, P-11. SEE ARCHITECTS ELEVATIONS AND RFS FOR LOCATIONS.
 - 13. NOTE T-9 AT EXPOSED AREAS OF SOFFIT.
 - 14. SEE ELEVATIONS AND DETAILS FOR TRIMS & DIMENSIONS.
 - 15. AWT-2 WITH P-1 ABOVE LIGHT COVE - SEE INTERIOR ELEVATIONS FOR EXTENT.
 - 16. NOT USED
 - 17. AWT-2 WITH P-1 ABOVE LIGHT COVE - SEE INTERIOR ELEVATIONS FOR EXTENT.