

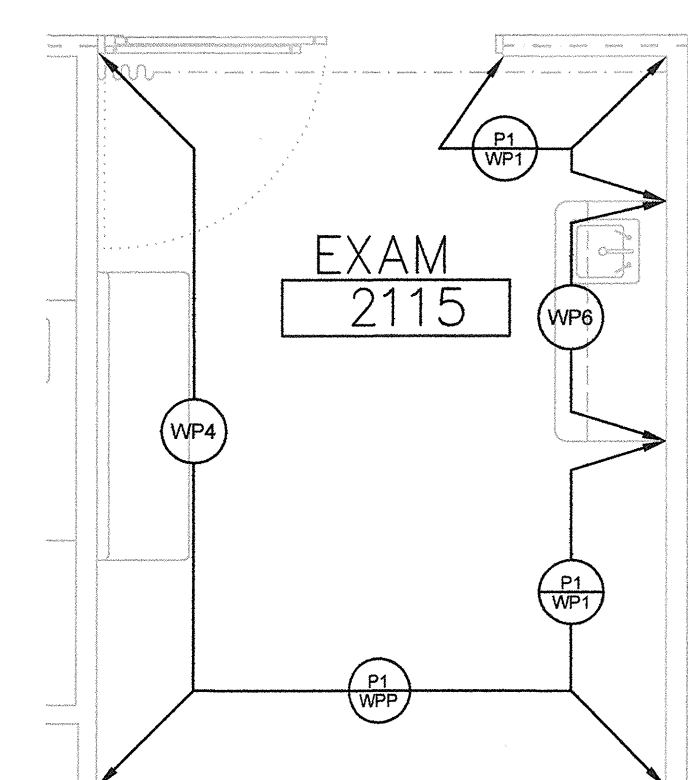
KEY PLAN

GENERAL NOTES

- GENERAL NOTES
- A. ALL SOFFITS TO BE PAINTED P-14 UNLESS OTHERWISE NOTED.
 - B. SEE INTERIOR ELEVATIONS FOR EXTENT OF FINISHES
 - C. SEE INTERIOR ELEVATIONS FOR ORIENTATION TO TYPICAL EXAM ROOM FINISHES.
 - D. SEE INTERIOR ELEVATIONS FOR ALL WALL TILE PATTERNS.

KEYNOTES:

1. WP4A PANEL: SEE ELEVATIONS AND DETAILS FOR EXACT HEIGHT AND LOCATION.
2. PARTIAL HEIGHT PANEL: SEE ELEVATIONS AND DETAILS FOR EXACT HEIGHT AND LOCATION.
3. PAINT SOFFIT TO MATCH ADJACENT ACCENT WALL COLOR.
4. PAINT SOFFIT P-13.
5. PAINT SOFFIT P-14.
6. NOT USED
7. NURSE STATION 2125, PHYS 2127, NURSE STATION 3125 (GREEN) INCLUDES THE FOLLOWING MATERIALS: PL-6, TB-3, P-6. SEE ARCHITECTS ELEVATIONS AND RFS FOR LOCATIONS.
8. NURSE STATION 2116 (PURPLE) INCLUDES THE FOLLOWING MATERIALS: PL-7, TB-4, P-7. SEE ARCHITECT'S ELEVATIONS AND RFS FOR LOCATIONS.
9. NURSE STATION 3136, PHYS. WORK 2113, PHYS. WORK 3138 (BLUE) INCLUDES THE FOLLOWING MATERIALS: PL-8, TB-5, P-8. SEE ARCHITECTS ELEVATIONS AND RFS FOR LOCATIONS.
10. NURSE STATION 2081, PHYS. WORK 2086, PHYS. WORK 3089, NURSE STATION 3072 (BLUE) INCLUDES THE FOLLOWING MATERIALS: PL-9, TB-6, P-9. SEE ARCHITECTS ELEVATIONS AND RFS FOR LOCATIONS.
11. NURSE STATION 2078, NURSE STATION 3079 (BROWN) INCLUDES THE FOLLOWING MATERIALS: PL-10, TB-7, P-10. SEE ARCHITECTS ELEVATIONS AND RFS FOR LOCATIONS.
12. NURSE STATION 2074, PHYS. WORK 2072 INCLUDES THE FOLLOWING MATERIALS: PL-11, TB-8, P-11. SEE ARCHITECTS ELEVATIONS AND RFS FOR LOCATIONS.
13. NOTE T-9 @ EXPOSED AREAS OF SOFFIT.
14. SEE ELEVATIONS AND DETAILS FOR TRIMS & DIMENSIONS.
15. AWT-2 WITH P-1 ABOVE LIGHT COVE -SEE INTERIOR ELEVATIONS FOR EXTENT.
16. NOT USED
17. AWT-2 WITH P-1 ABOVE LIGHT COVE -SEE INTERIOR ELEVATIONS FOR EXTENT.



D EXAM ROOM TYPICAL
1 SCALE: 1/4" = 1'-0"