

1 ELEVATION

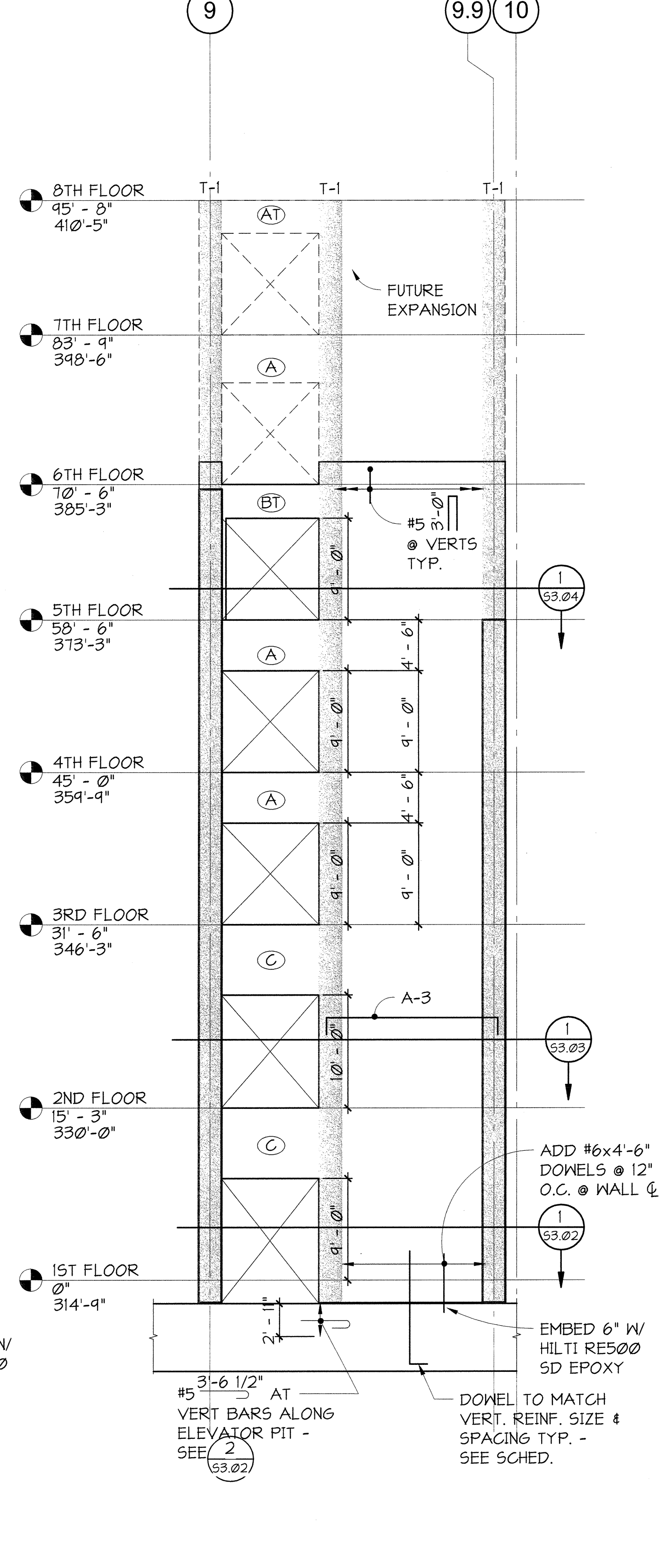
53.00 1/8" = 1'-0"

2 ELEVATION

53.00 1/8" = 1'-0"

3 ELEVATION

53.00 1/8" = 1'-0"



4 CORE WALL REINFORCING SCHEDULE

53.00 1/8" = 1'-0"

CORE WALL REINFORCING SCHEDULE										
MARK	A-1		A-2		A-3		T-1		T-2	
LEVEL	VERTS	HORIZ.	VERTS	HORIZ.	VERTS	HORIZ.	VERTS	TIES	VERTS	TIES
8th Floor (Future)										
7th Floor (Future)										
6th Floor										
5th Floor										
4th Floor										
3rd Floor										
2nd Floor										
1st Floor										
MAT FDN										

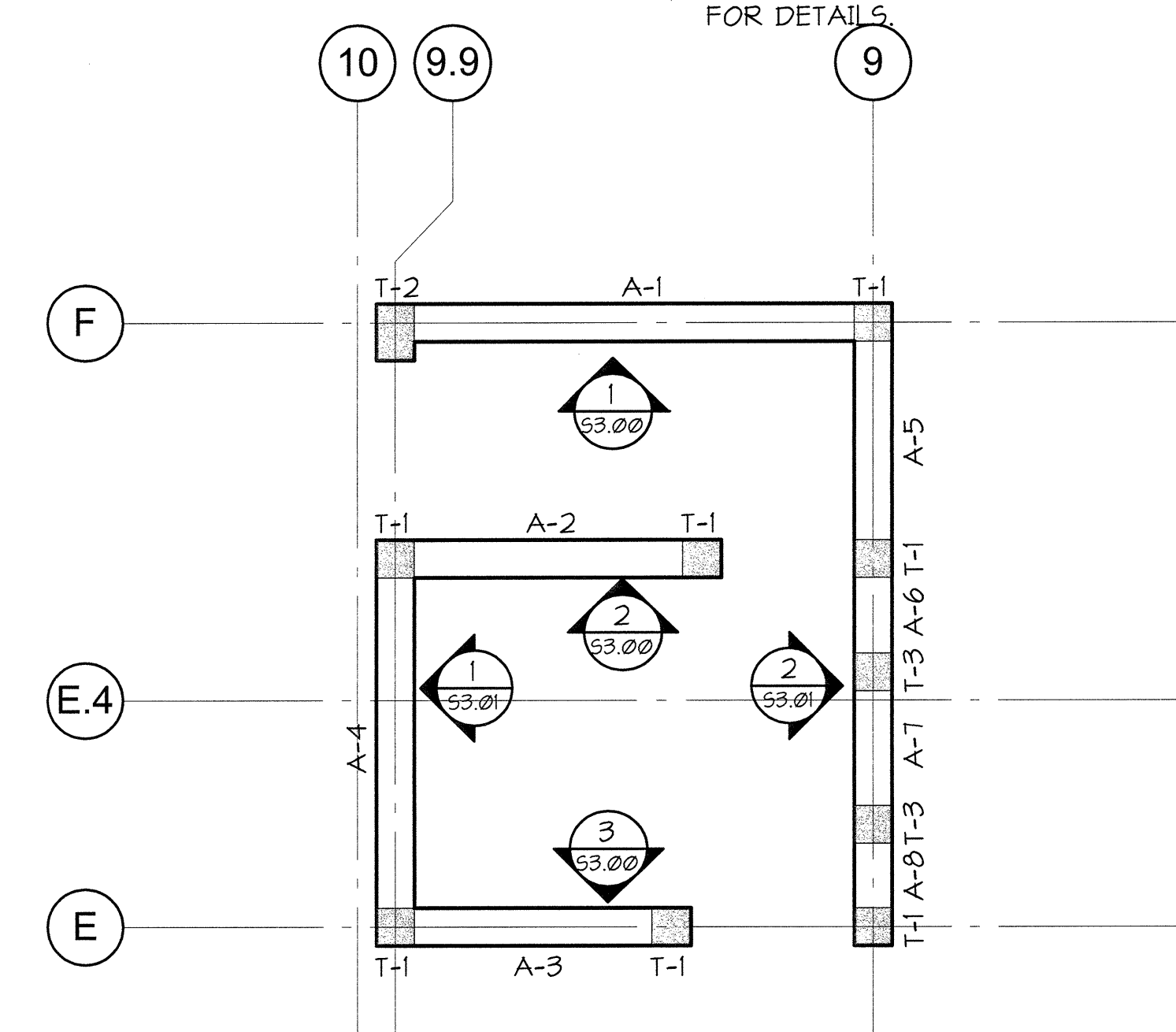
NOTES:
1. WHEN REIN. IS NOT CALLED OUT USE REIN. FROM LEVEL BELOW.
2. SPLICES ARE OPTIONAL, CONTRACTOR COORDINATE.
3. DOWELS TO MATCH VERT. SIZE & SPACING - TYP.
4. USE STANDARD HOOKS WHERE SHOWN IN ELEVATION.

SHEAR WALL SPLICE SCHEDULE			
BAR SIZE	CONFINED VERT. REINF.	UNCONFINED VERT. REINF.	HORIZ. REINF.
#4	1'-7"	2'-6"	3'-4"
#5	1'-11"	3'-2"	4'-2"
#6	2'-4"	3'-4"	5'-0"
#7	3'-4"	5'-8"	7'-4"
#8	3'-11"	6'-6"	8'-4"
#9	4'-5"	7'-4"	9'-5"
#10	4'-11"	8'-2"	10'-8"
#11	5'-5"	9'-1"	11'-10"

SPLICE SCHEDULE NOTES:
1. SEE SECTION CUTS FOR REINFORCING LAYOUT.

NOTES:

1. $f_c = 7,000$ psi.
2. TOP OF WALL VARIES, SEE PLAN.
3. CONCRETE WALL VERTICAL AND HORIZONTAL ALIGNMENT TOLERANCE SHALL BE $\pm 1/4$ INCH FROM THEORETICAL.
4. SEE 0/54.50 FOR TYPICAL EMBED PLATE DETAILS.
5. SEE 13/54.40 & 15/54.40 FOR TYPICAL WALL TO SLAB CONNECTION DETAILS.
6. WHEN REINFORCEMENT IS NOT CALLED OUT USE REINFORCEMENT FROM LEVEL BELOW.
7. VERTICAL BAR SPLICES ARE OPTIONAL, CONTRACTOR COORDINATE.
8. "T-X" SHADING INDICATES AREA OF CORE WALL "TIED" ZONE REINFORCEMENT SEE SCHEDULE.
9. "A-X" INDICATES AREA OF CORE WALL VERTICAL AND HORIZONTAL REINFORCEMENT SEE SCHEDULE.
10. - INDICATES COUPLING BEAM DESIGNATION. SEE 54.30 & 54.31 FOR DETAILS.



5 SOUTH CORE KEY PLAN

53.00 1/8" = 1'-0"