

1

2

3

4

5

6

7

A

B

C

D

E

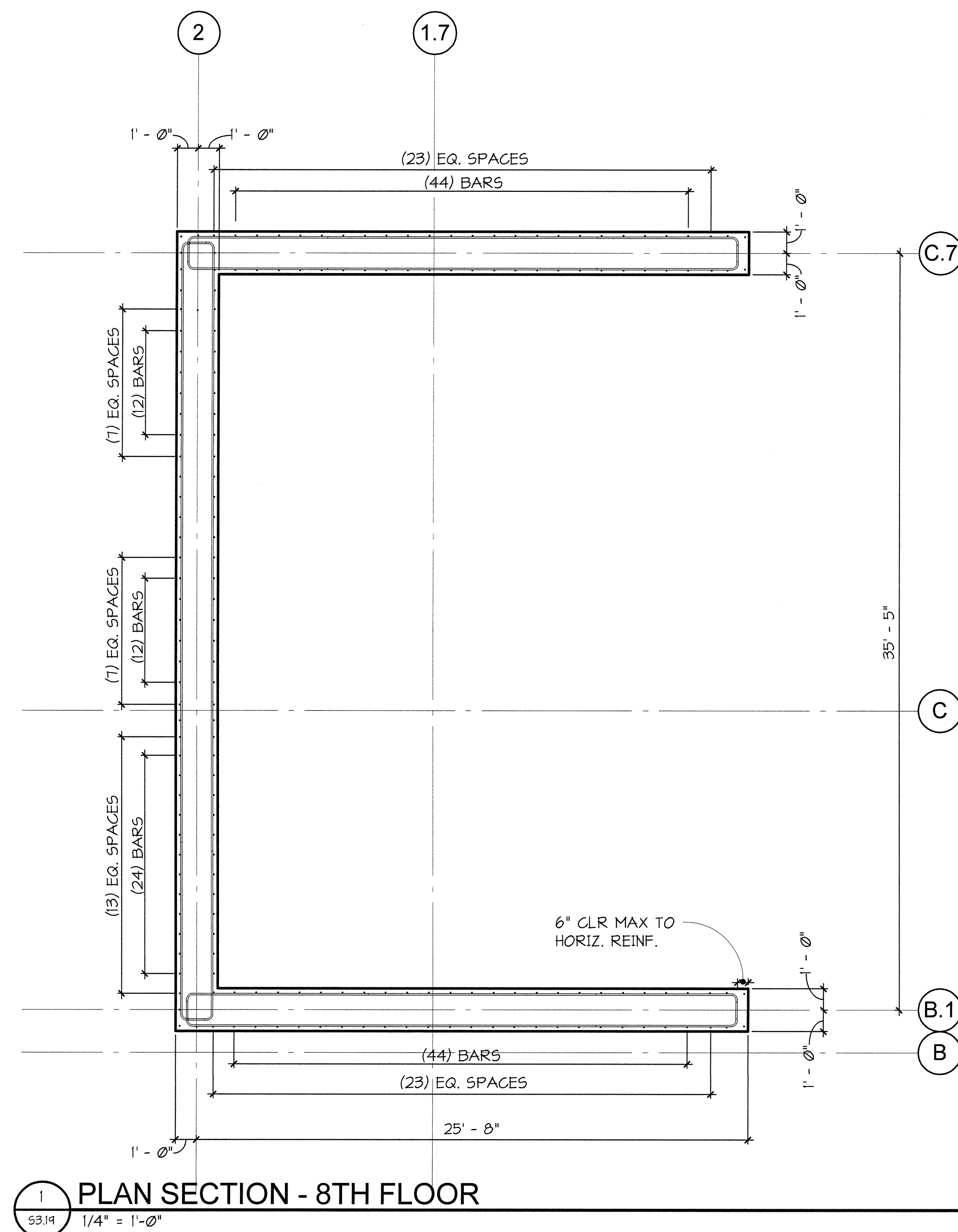
A

B

C

D

E

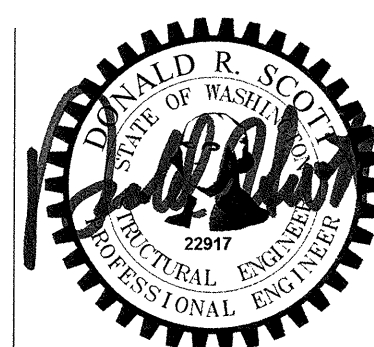


811 First Avenue, Suite 620
Seattle, Washington 98104
Tel: 206.255.2070

950 Pacific Avenue, Suite 1100
Tacoma, Washington 98402
Tel: 253.355.2707

GIFFIN • BOLTE • JURGENS p.c.
A R C H I T E C T S

815 S.W. SECOND AVENUE PORTLAND, OREGON 97204
(503) 223-0992 www.gbjarch.com FAX (503) 294-3961



MultiCare

EMERGENCY DEPARTMENT & CANCER CENTER EXPANSION

TACOMA, WASHINGTON

Date 09-26-2008
Scale 1/4" = 1'-0"
Drawn By RSC
Job No. 4034

NORTH CORE WALL
SECTION

S3
19