

1

2

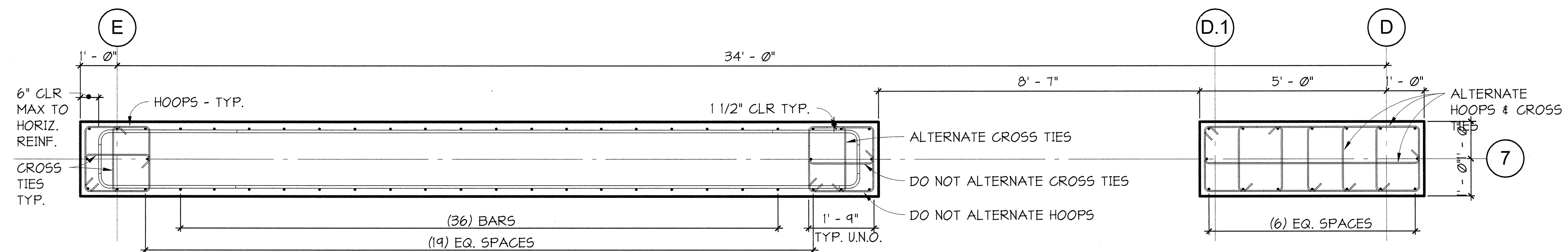
3

4

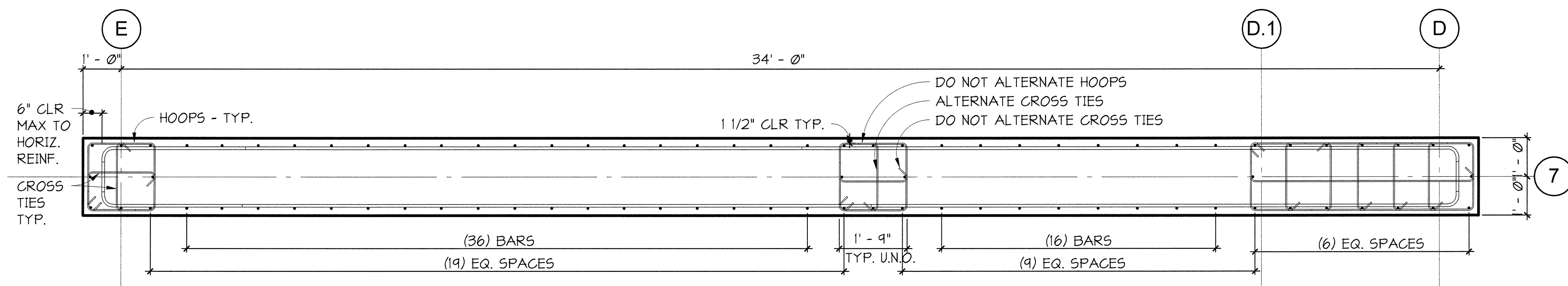
5

6

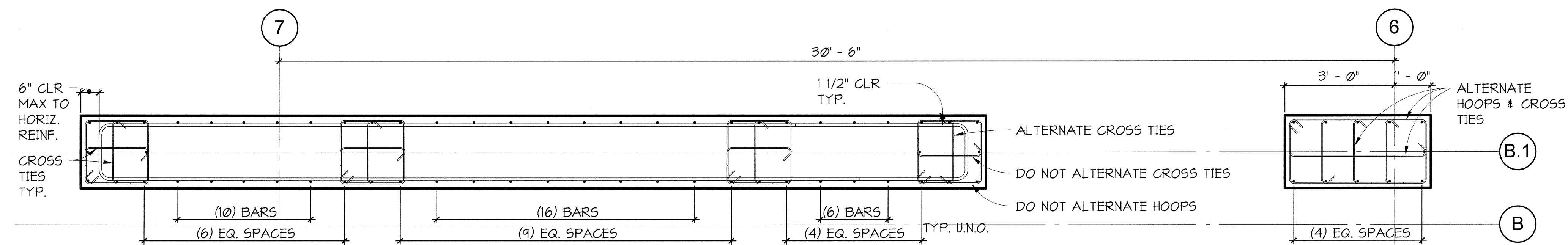
7



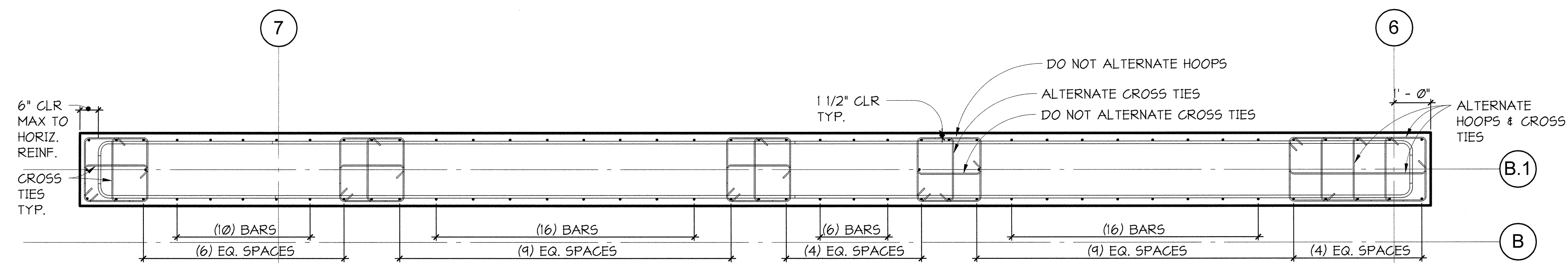
1 PLAN SECTION - 1ST FLOOR



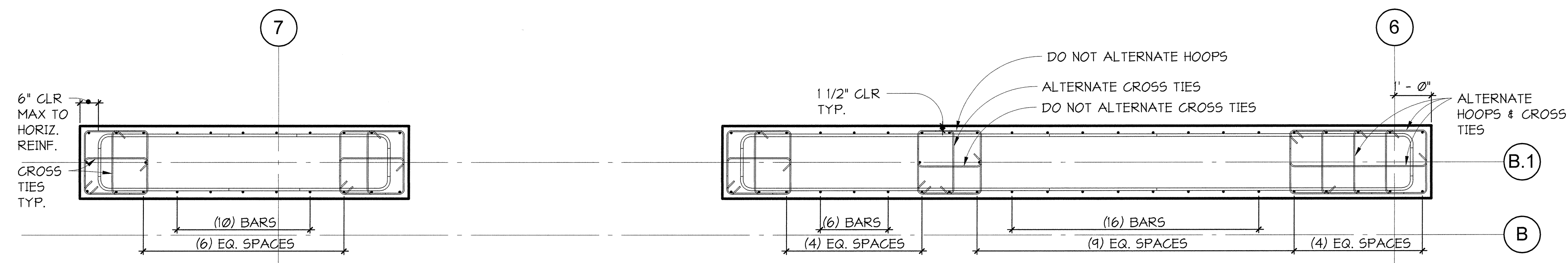
2 PLAN SECTION - 2ND, 3RD, 4TH, AND 5TH FLR



3 PLAN SECTION - 1ST FLOOR



4 PLAN SECTION - 2ND FLOOR



5 PLAN SECTION - 3RD, 4TH AND 5TH FLOOR

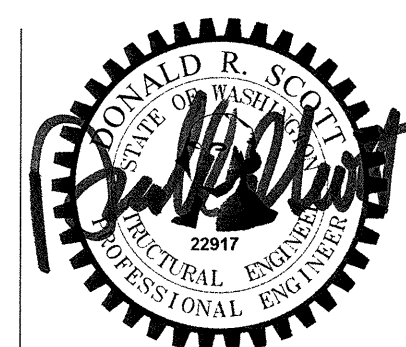


811 First Avenue, Suite 620
Seattle, Washington 98104
Tel: (206) 255-8000

950 Pacific Avenue, Suite 1100
Tacoma, Washington 98402
Tel: (253) 363-7700

GIFFIN • BOLTE • JURGENS, P.C.
ARCHITECTS

815 S.W. SECOND AVENUE PORTLAND OREGON 97204
(503) 223-0992 www.gbarch.com FAX (503) 294-3961



MultiCare

EMERGENCY DEPARTMENT & CANCER CENTER EXPANSION

TACOMA, WASHINGTON

Date 09-26-2008
Scale 1/2" = 1'-0"
Drawn By RSC
Job No. 4034

SHEAR WALL PLAN
SECTION

S3
21