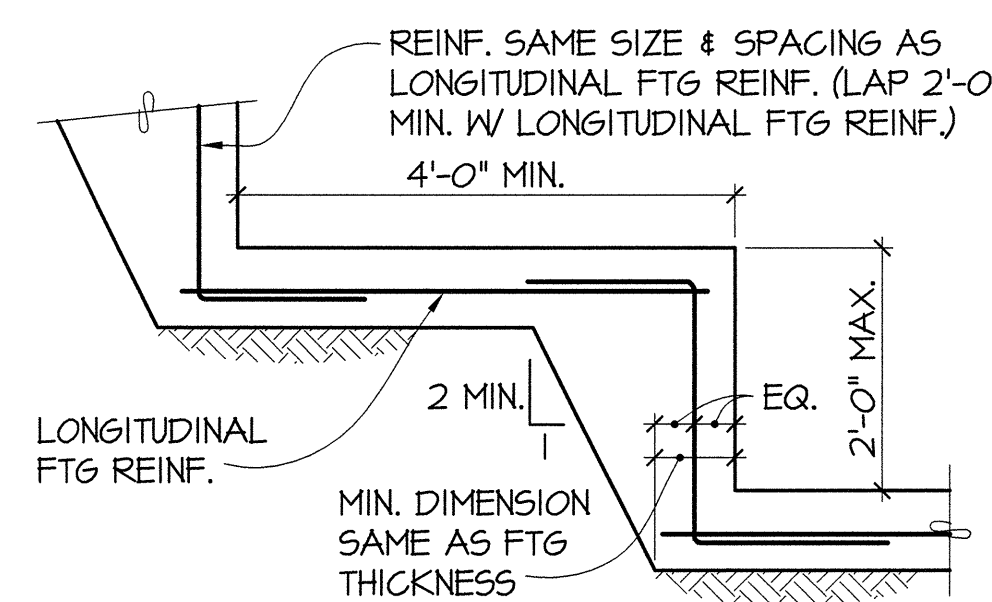
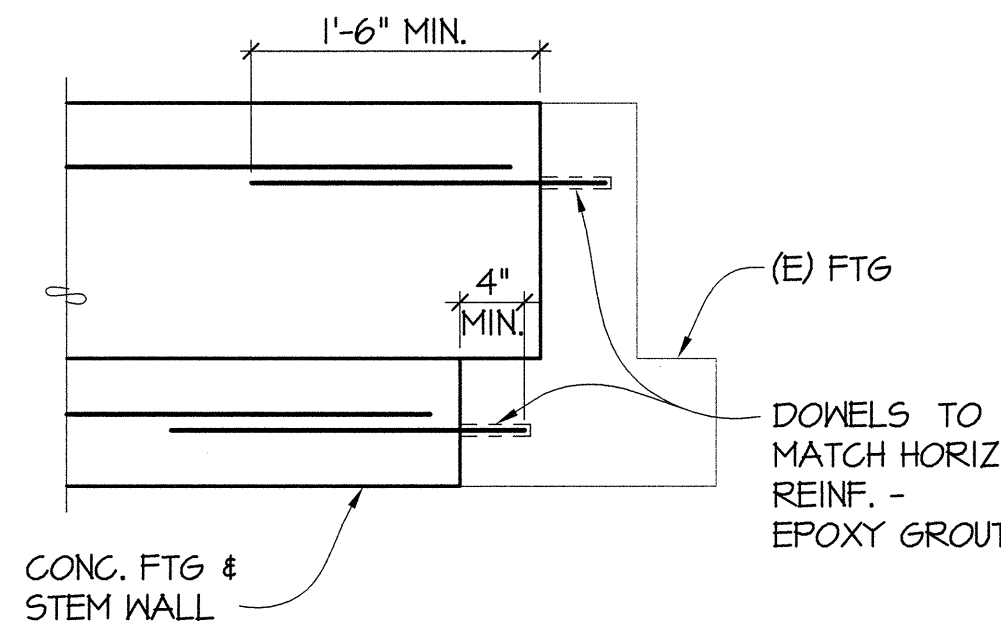


A



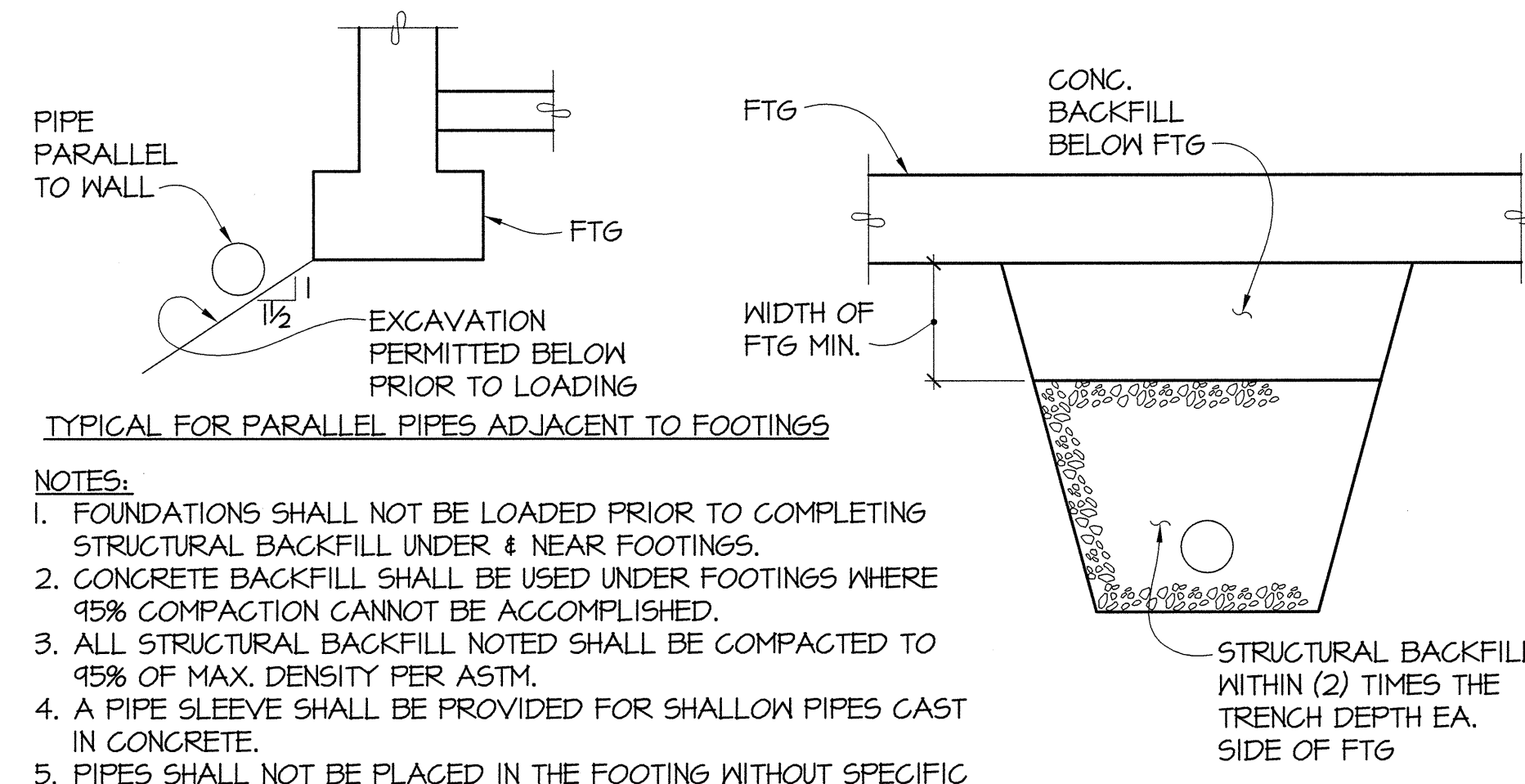
TYPICAL STEPPED FOOTING

1
S4.01
NO SCALE



NEW FOOTING/EXISTING FOOTING CONNECTION

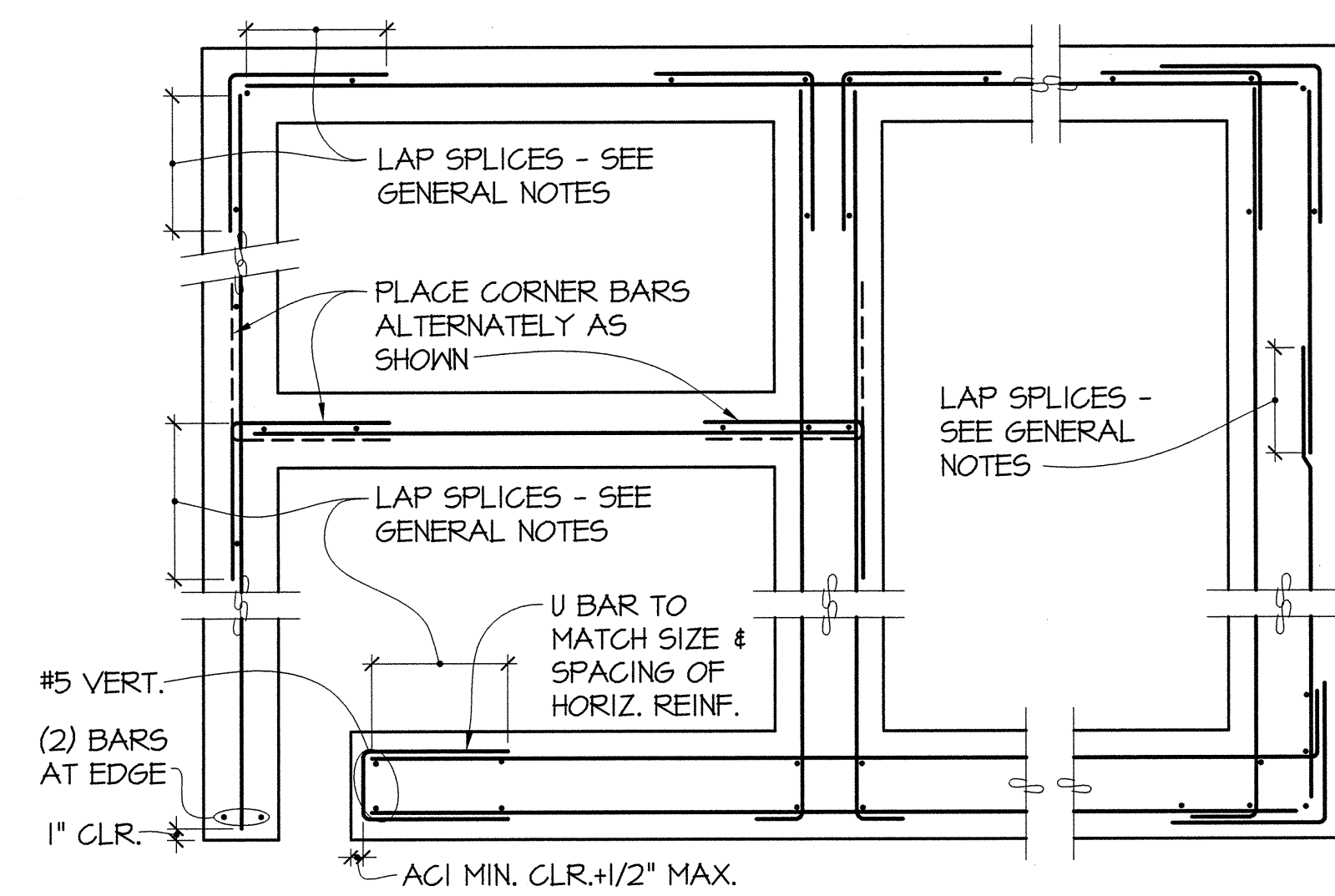
2
S4.01
1"=1'-0"



TYPICAL FOR PARALLEL PIPES ADJACENT TO FOOTINGS

- NOTES:
- FOUNDATIONS SHALL NOT BE LOADED PRIOR TO COMPLETING STRUCTURAL BACKFILL UNDER & NEAR FOOTINGS.
 - CONCRETE BACKFILL SHALL BE USED UNDER FOOTINGS WHERE 95% COMPACTION CANNOT BE ACCOMPLISHED.
 - ALL STRUCTURAL BACKFILL NOTED SHALL BE COMPACTED TO 95% OF MAX. DENSITY PER ASTM.
 - A PIPE SLEEVE SHALL BE PROVIDED FOR SHALLOW PIPES CAST IN CONCRETE.
 - PIPES SHALL NOT BE PLACED IN THE FOOTING WITHOUT SPECIFIC APPROVAL FROM THE ENGINEER.
 - FOR VARIATIONS CONTACT ENGINEER.

TYPICAL FOR PERPENDICULAR PIPES UNDER FOOTINGS

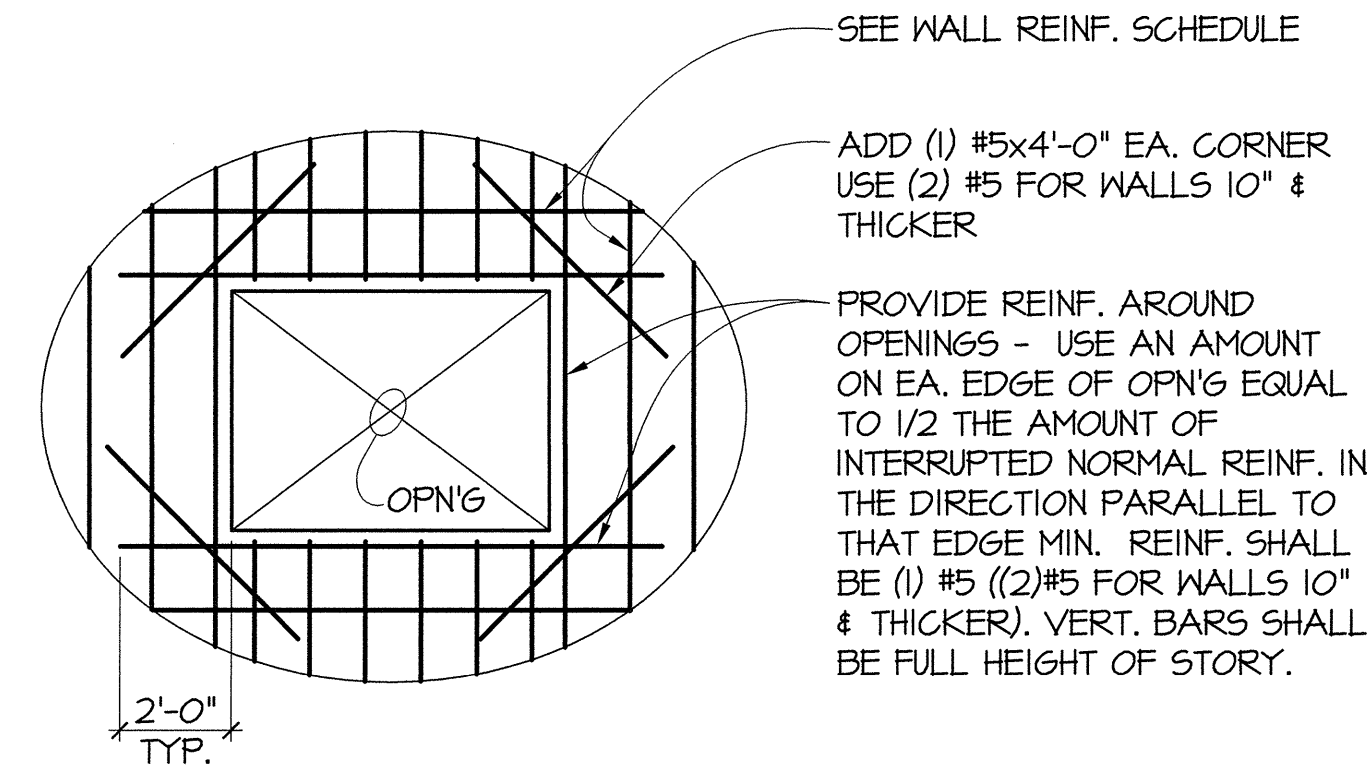


TYPICAL REINFORCING PLACEMENT FOR CAST IN PLACE CONCRETE WALLS AND STEM WALLS

4
S4.01
NO SCALE

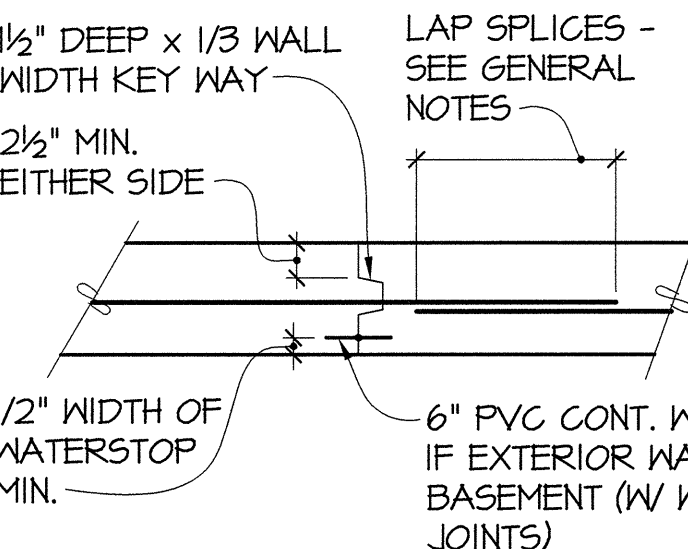
- NOTES:
- VERT. REINF. SHOWN IS ADD'L IF NORMAL STEM WALL REINF. IS NOT IN PROPER LOCATION.
 - CORNER BARS ARE SAME SIZE & SPACING AS HORIZ. REINF.
 - 90° STD HOOK MAY BE SUBSTITUTED FOR CORNER BARS. SEE NOTE #5.
 - REINF. AT ALL CORNERS, ENDS, & INTERSECTIONS OF WALLS SHALL BE PLACED IN ACCORDANCE W/ APPROPRIATE DETAIL SHOWN.
 - USE 90° STD HOOK FOR EMBEDMENT LESS THAN 24" PAST FACE OF WALL.

B



TYPICAL AT OPENINGS IN CAST IN PLACE CONCRETE WALLS

5
S4.01
NO SCALE

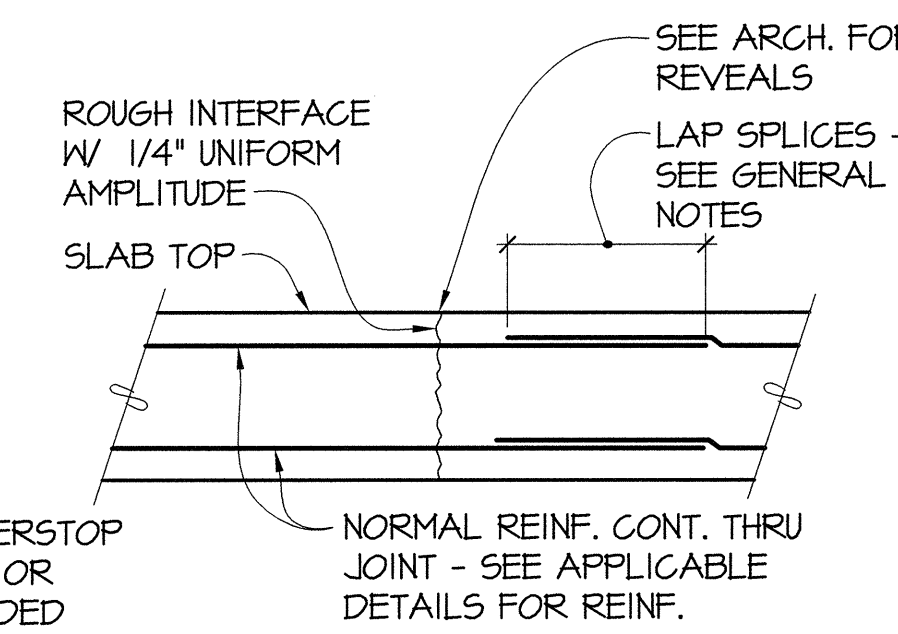


TYPICAL AT VERTICAL WALL JOINTS

NOTE:
OBTAIN APPROVAL OF ENGINEER FOR LOCATION OF ANY CONST. JOINTS.

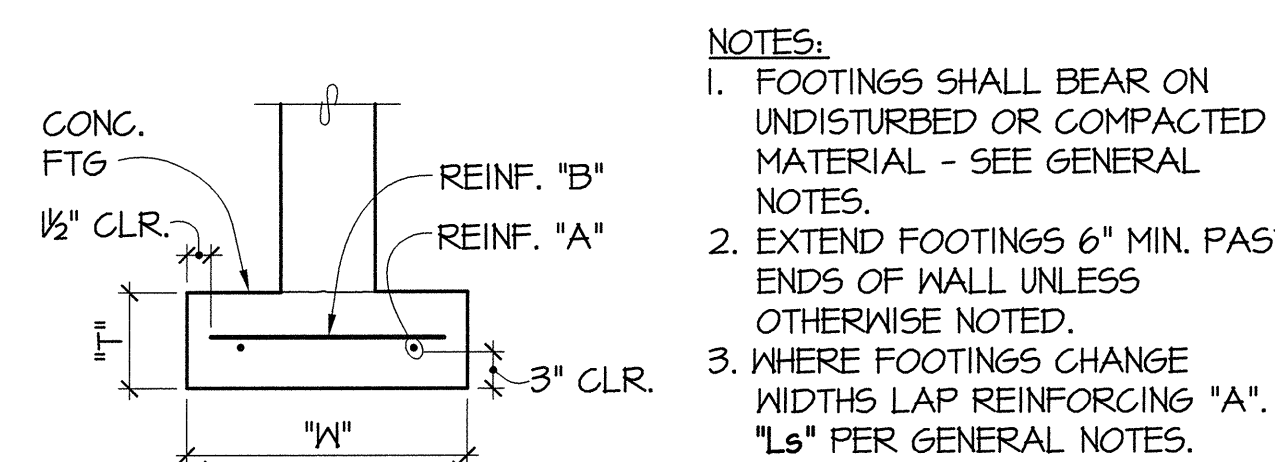
TYPICAL FOR CAST IN PLACE CONCRETE WALLS, GRADE BEAMS AND FOOTINGS

6
S4.01
NO SCALE



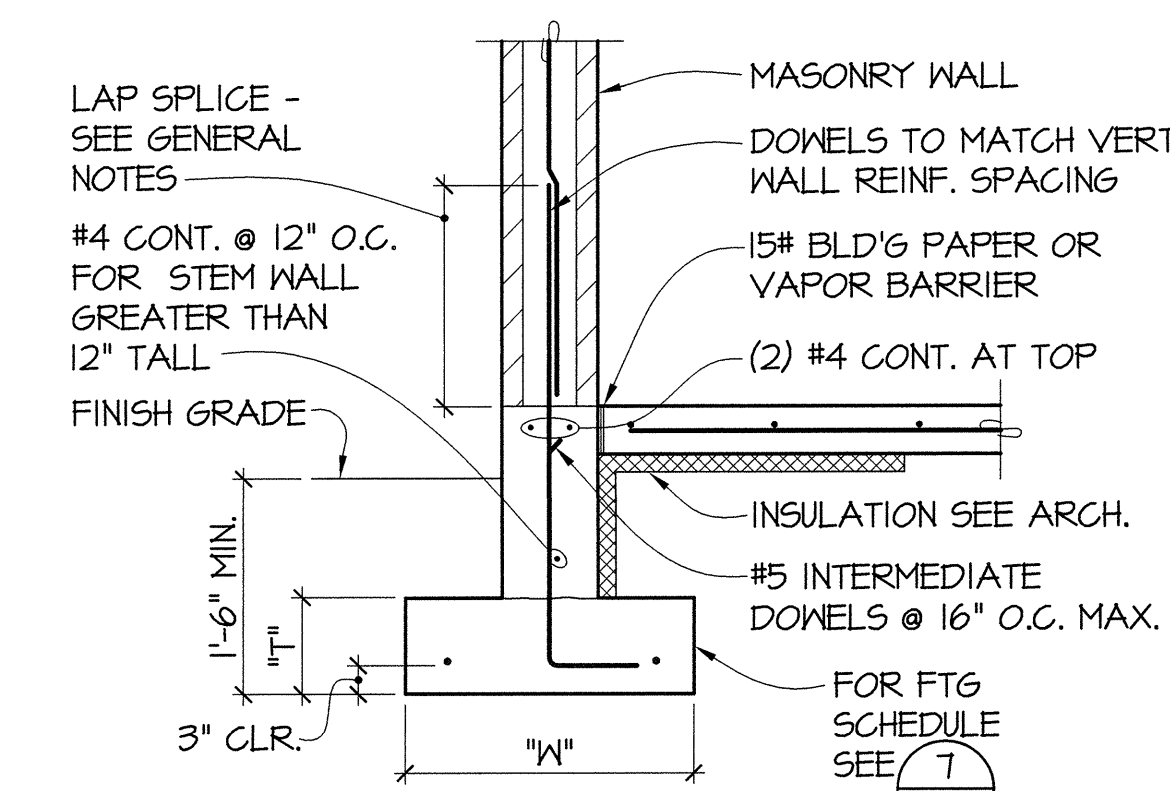
TYPICAL AT CONCRETE GRADE BEAMS & FOOTINGS

WIDTH "W"	"T"	REINF. "A" CONT.	REINF. "B"
2'-0"	14"	(2) #5	#4 @ 24" O.C.
3'-0"	20"	(4) #5	#6 @ 20" O.C.
4'-0"	22"	(5) #5	#6 @ 18" O.C.
5'-0"	28"	(6) #6	#8 @ 12" O.C.



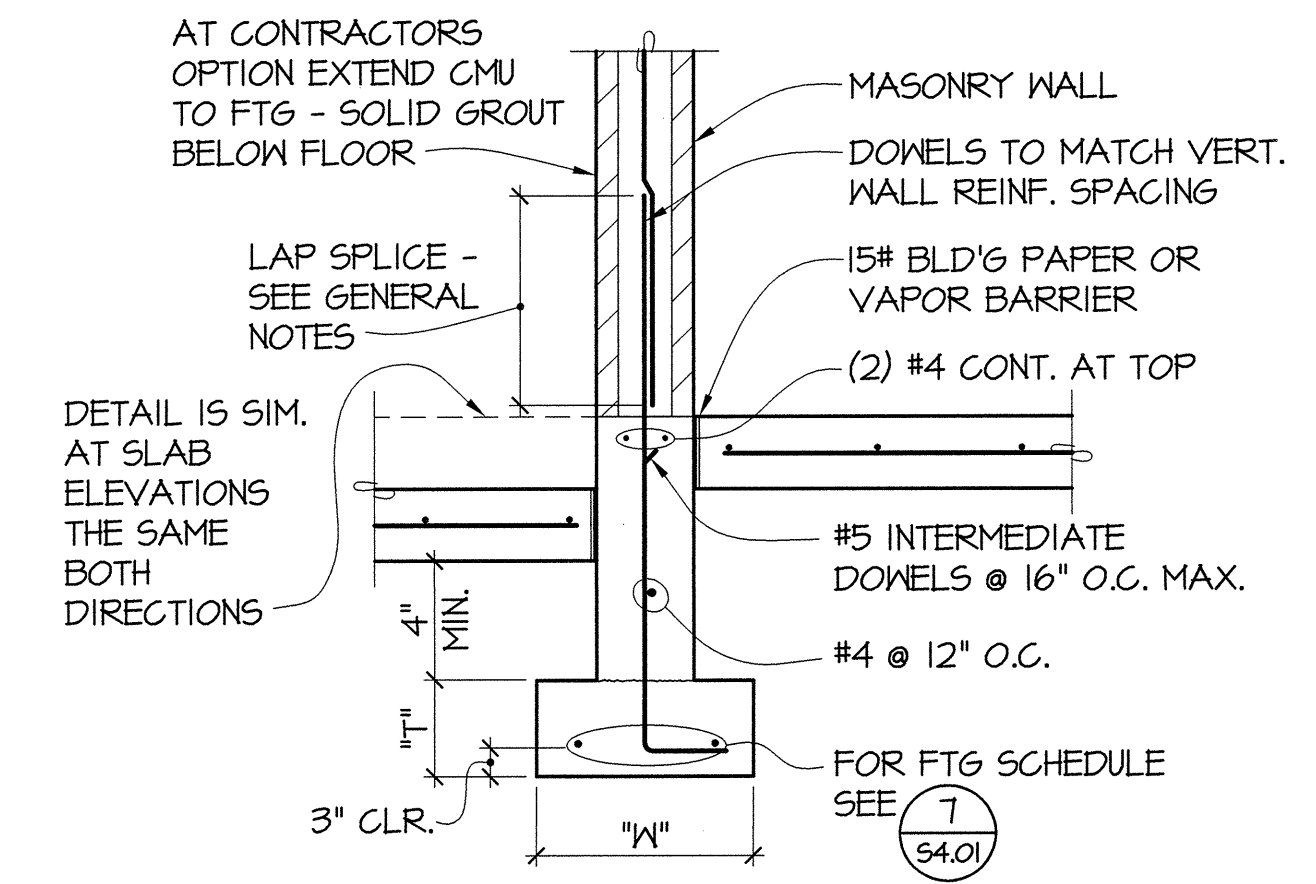
TYPICAL CONTINUOUS FOOTING DETAIL

7
S4.01
NO SCALE



TYPICAL FOUNDATION AT EXTERIOR MASONRY WALL

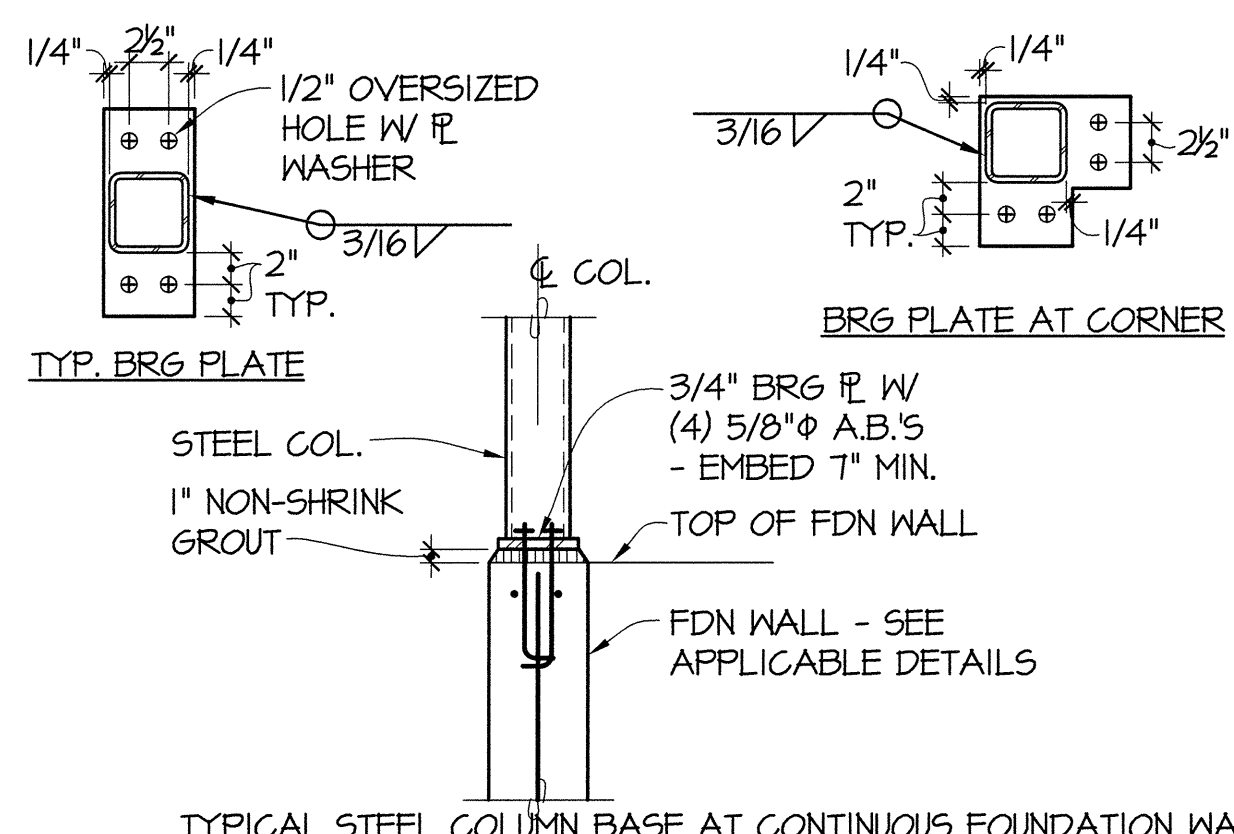
8
S4.01
NO SCALE



TYPICAL FOUNDATION AT INTERIOR MASONRY WALL

9
S4.01
NO SCALE

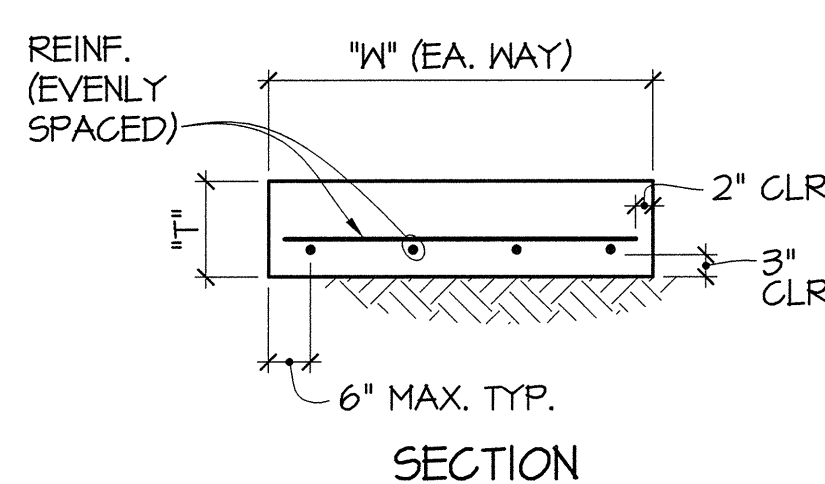
C



TYPICAL STEEL COLUMN BASE AT CONTINUOUS FOUNDATION WALL

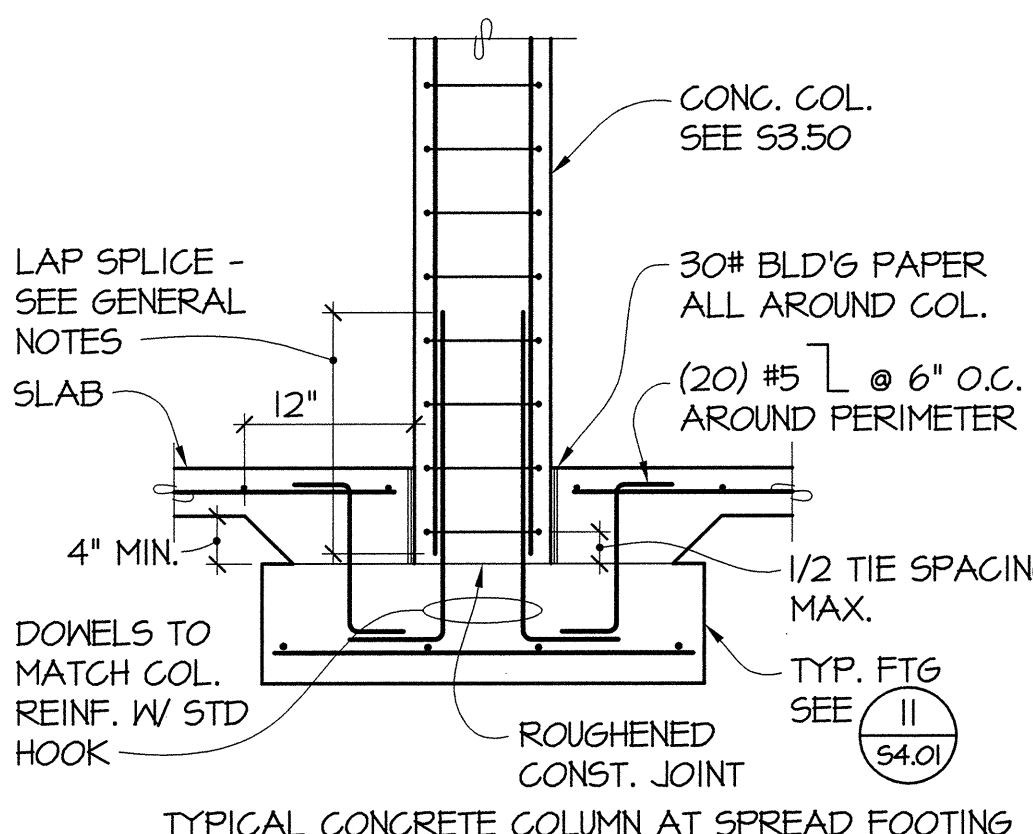
10
S4.01
NO SCALE

MARK	DIMENSIONS		REINF. EA. WAY
	"W"	"T"	
F4.0	4'-0"	14"	(3) #5
F5.0	5'-0"	18"	(4) #6
F6.0	6'-0"	22"	(7) #6
F7.0	7'-0"	26"	(8) #6
F8.0	8'-0"	30"	(8) #7
F10.0	10'-0"	38"	(10) #8
F12.0	12'-0"	46"	(11) #9



TYPICAL CONCRETE SPREAD FOOTING DETAILS

11
S4.01
NO SCALE



TYPICAL CONCRETE COLUMN AT SPREAD FOOTING

12
S4.01
NO SCALE

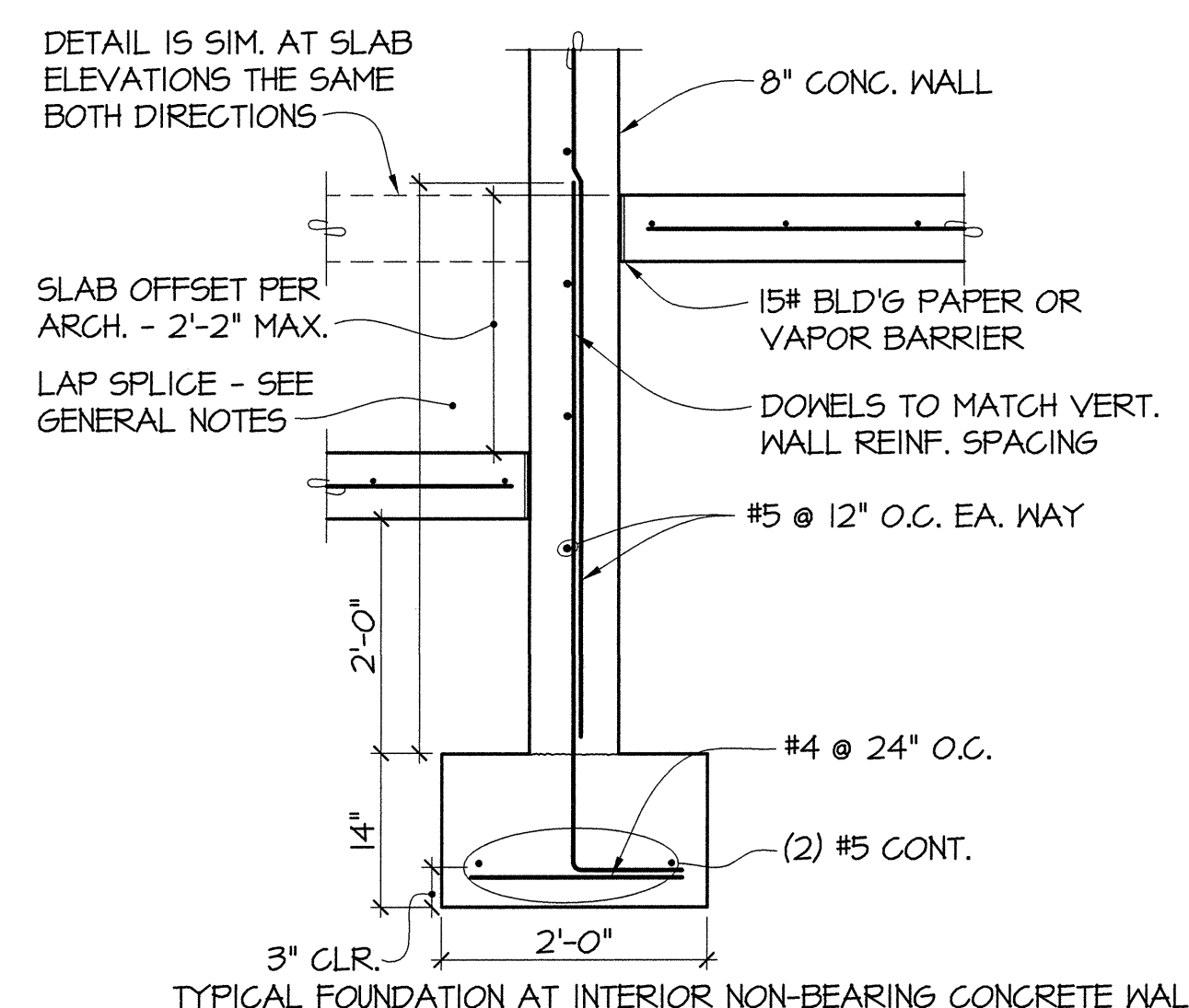
MARK	DIMENSIONS			REINF.		REMARKS
	"W1"	"W2"	"T"	"A"	"B"	
F3.0/6.0	3'-0"	6'-0"	21"	(8) #4	(7) #6	
F4.0/8.0	4'-0"	8'-0"	27"	(8) #4	(7) #8	

- NOTES:
- CENTER ALL FOOTINGS ON COLUMN ABOVE EXCEPT AS SHOWN OTHERWISE.
 - FOOTINGS SHALL BEAR ON UNDISTURBED OR COMPACTED MATERIAL, SEE GENERAL NOTES.

TYPICAL CONCRETE SPREAD FOOTING DETAIL

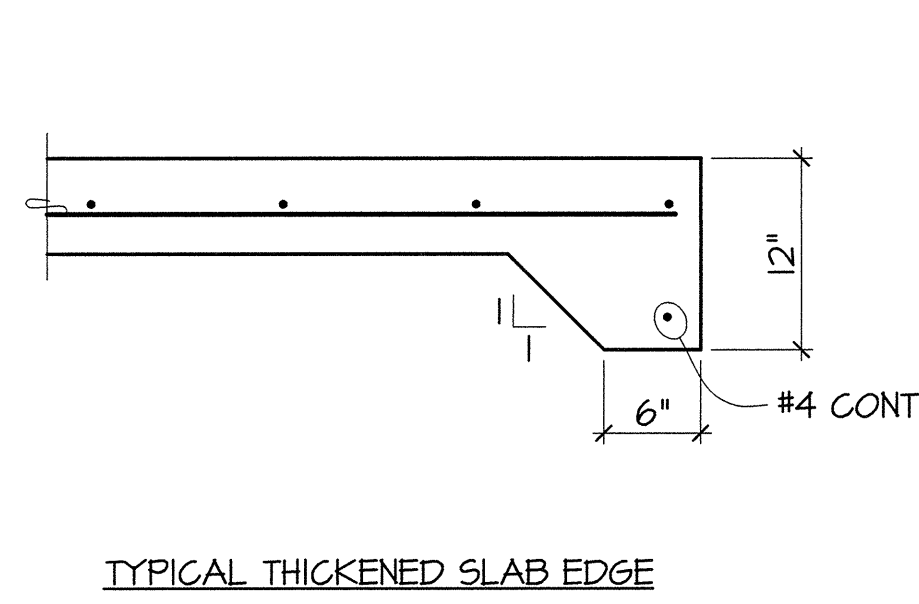
13
S4.01
NO SCALE

D



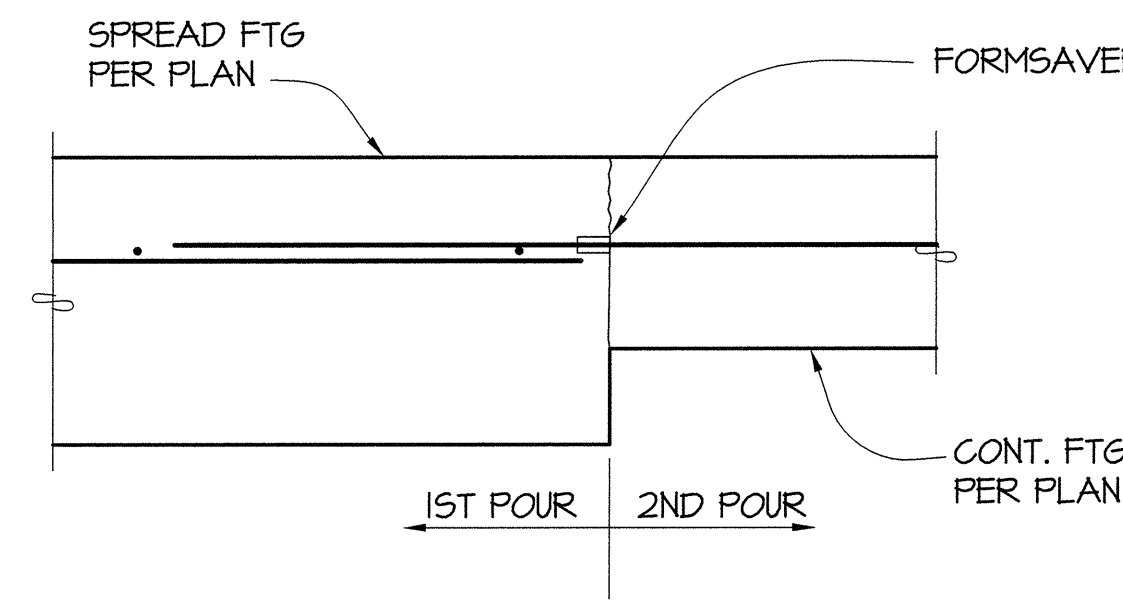
TYPICAL FOUNDATION AT INTERIOR NON-BEARING CONCRETE WALL

14
S4.01
NO SCALE



TYPICAL THICKENED SLAB EDGE

15
S4.01
1"=1'-0"



16
S4.01
1"=1'-0"

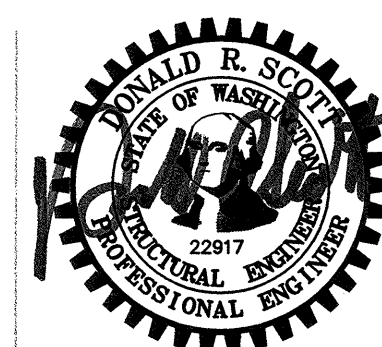


811 First Avenue, Suite 600
Seattle, Washington 98104
Tel: 206.362.2000

960 Pacific Avenue, Suite 1200
Tacoma, Washington 98402
Tel: 253.363.2797

GIFFIN • BOLTE • JURGENS
ARCHITECTS

815 S.W. SECOND AVENUE • PORTLAND, OREGON 97204
(503) 223-0992 • www.gbjaarch.com • FAX (503) 294-3961



MultiCare

EMERGENCY DEPARTMENT & CANCER CENTER EXPANSION

TACOMA, WASHINGTON

Date 09-26-2008
Scale NO SCALE
Drawn By aag
Job No. 4034

FOUNDATION
DETAILS

S4
01