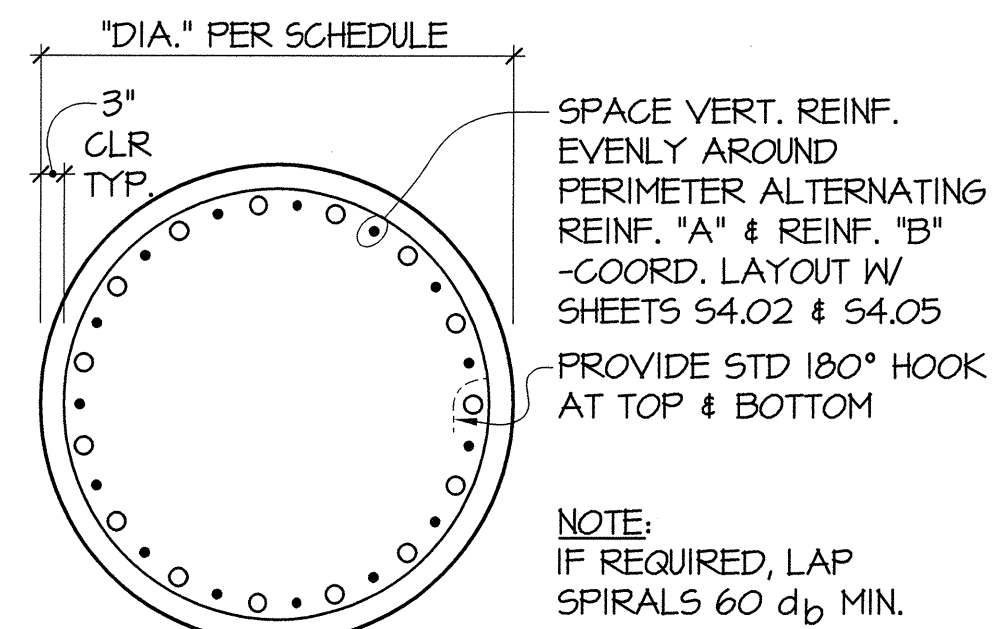
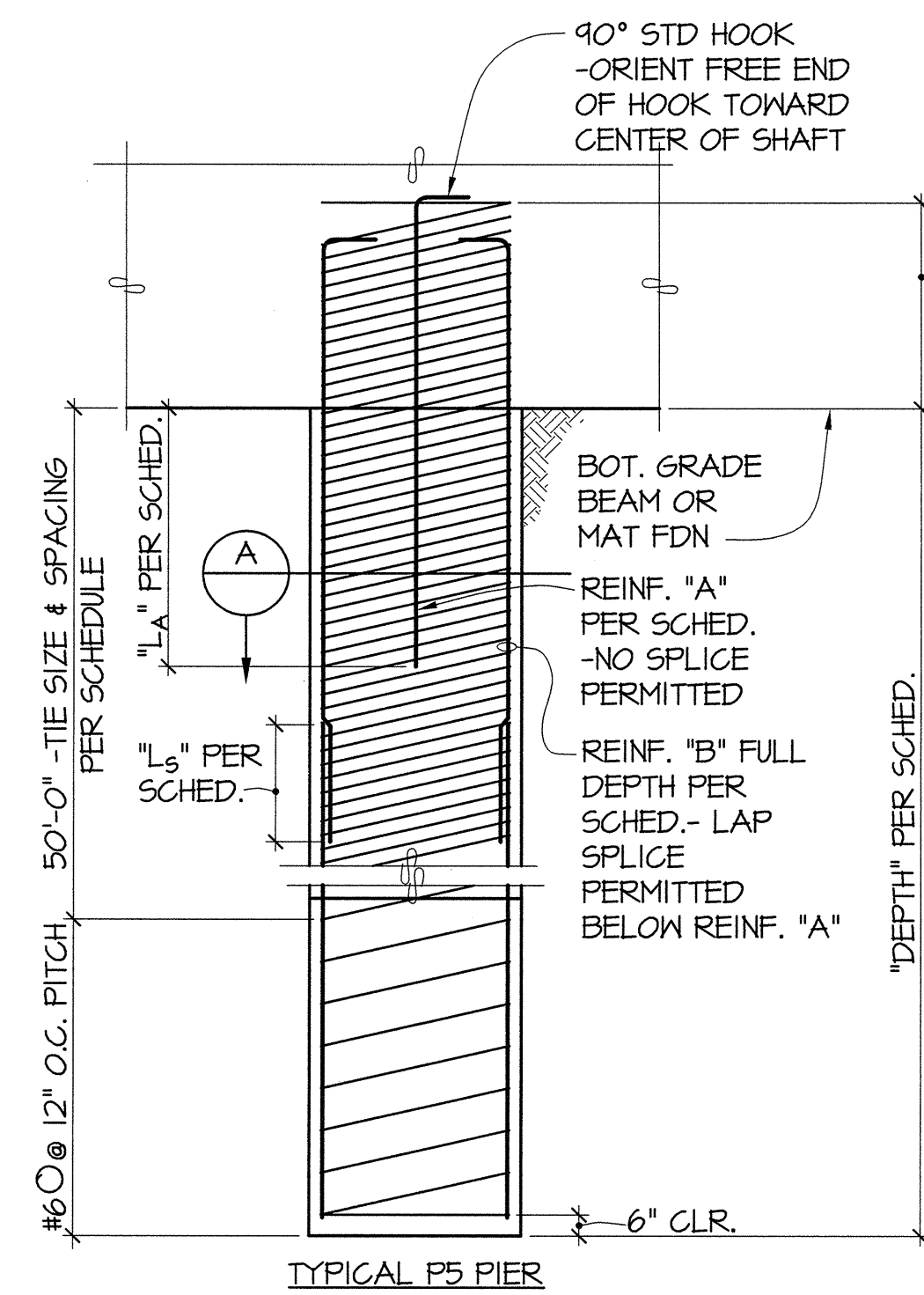


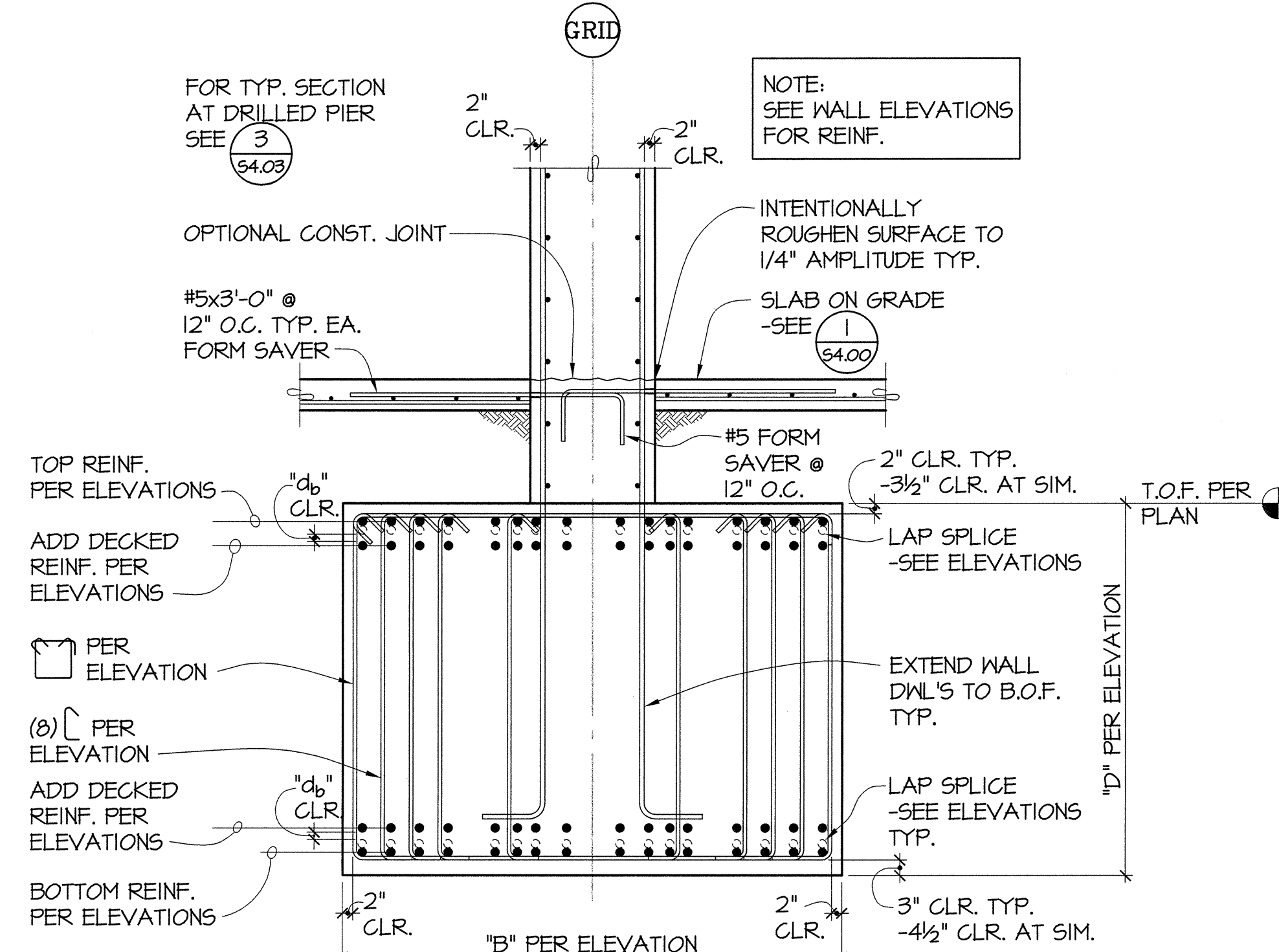
DRILLED PIER REINFORCING SCHEDULE						
MARK	DIA.	REINF. "A"	"Ls"	REINF. "B"	"Ls"	TIE SIZE & PITCH
P5A	5'-0"	(15) #18	20'-0"	(15) #11	9'-1"	#6 @ 4" 85'-0"
P5B	5'-0"	(9) #11	18'-0"	(9) #11	9'-1"	#6 @ 4" 85'-0"
P5C	5'-0"	(12) #18	20'-0"	(12) #11	9'-1"	#6 @ 4" 65'-0"
P5D	5'-0"	(8) #11	18'-0"	(8) #11	9'-1"	#6 @ 4" 65'-0"



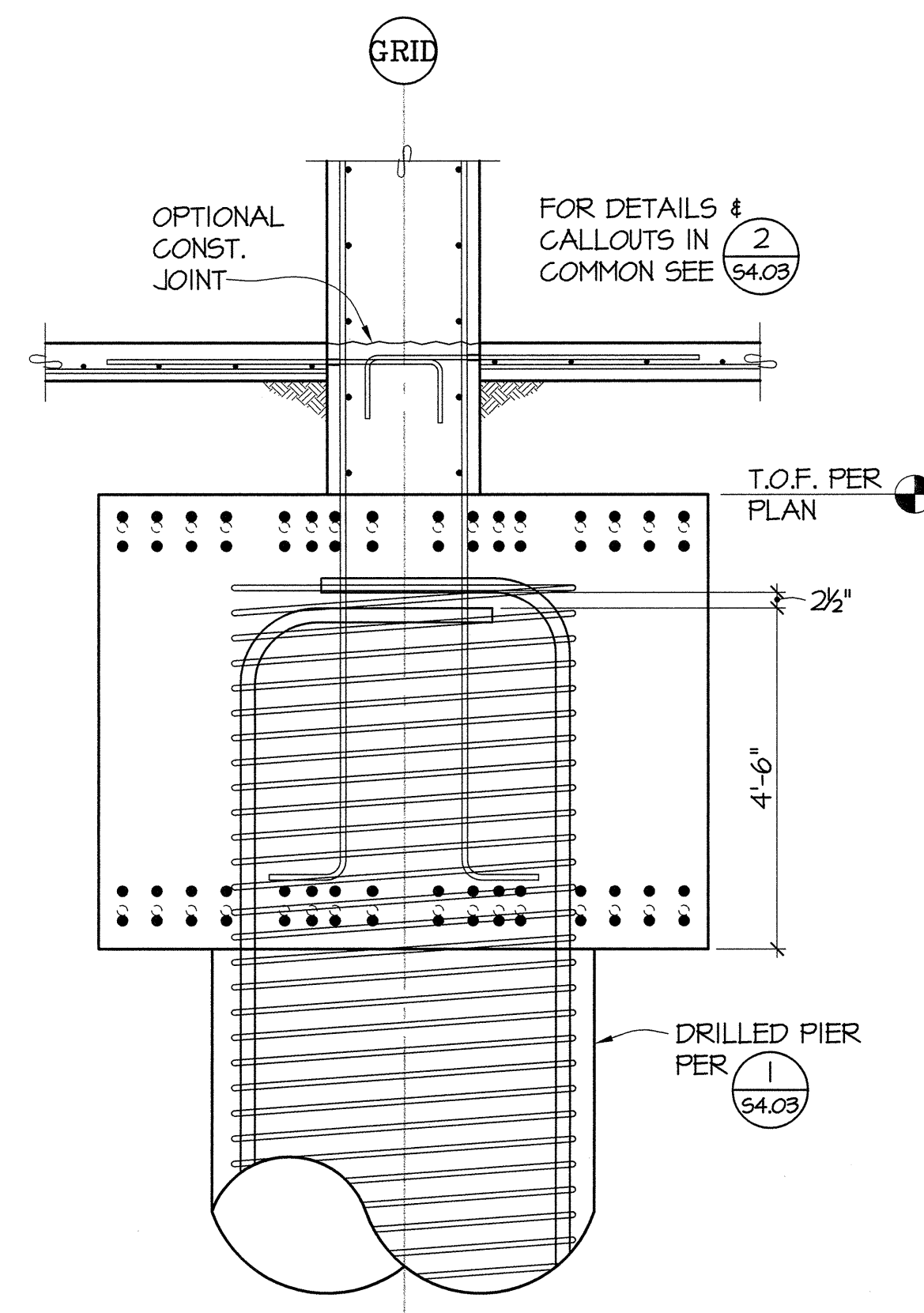
**SECTION**  
N.T.S.



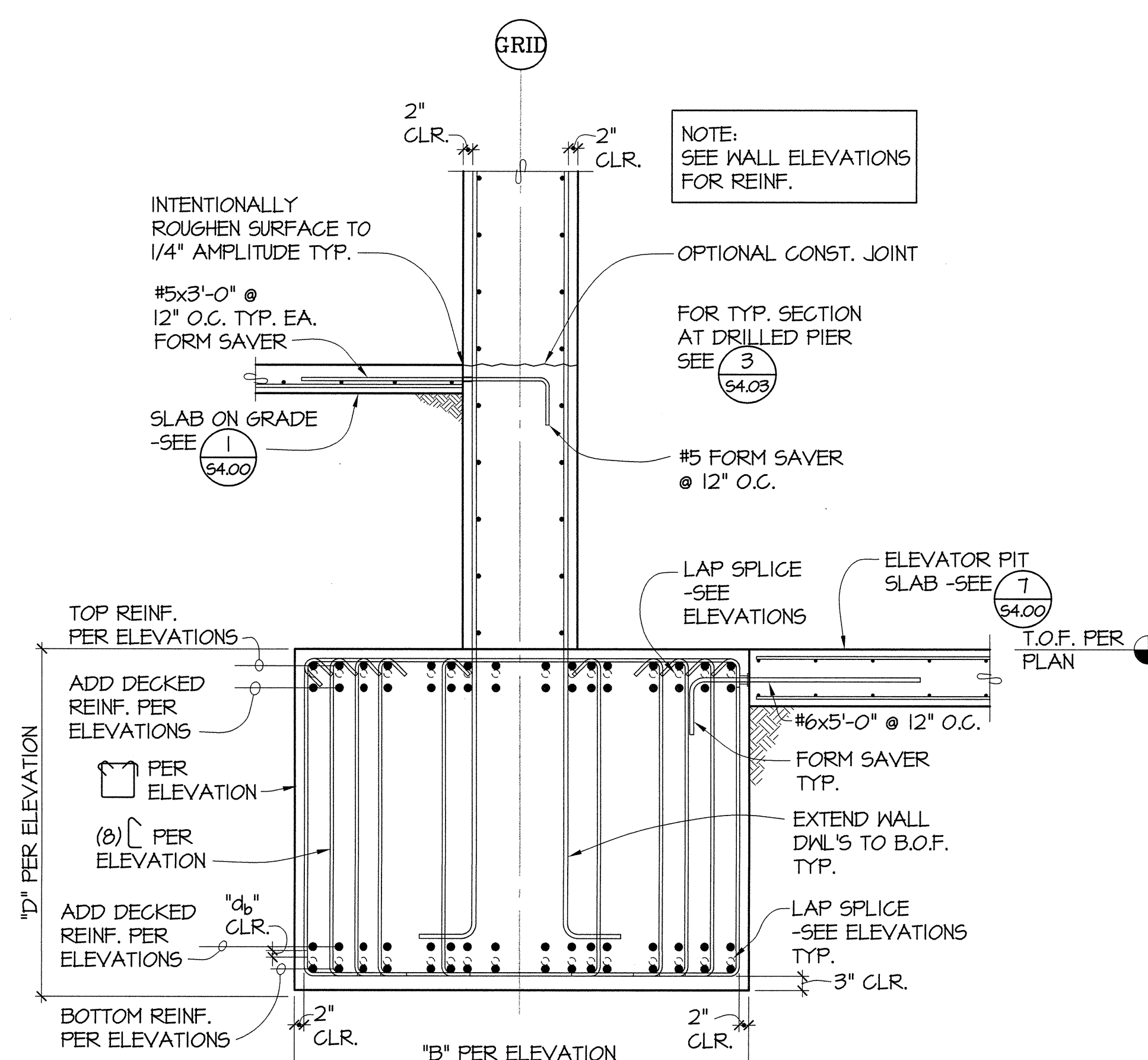
**DETAIL**  
NO SCALE



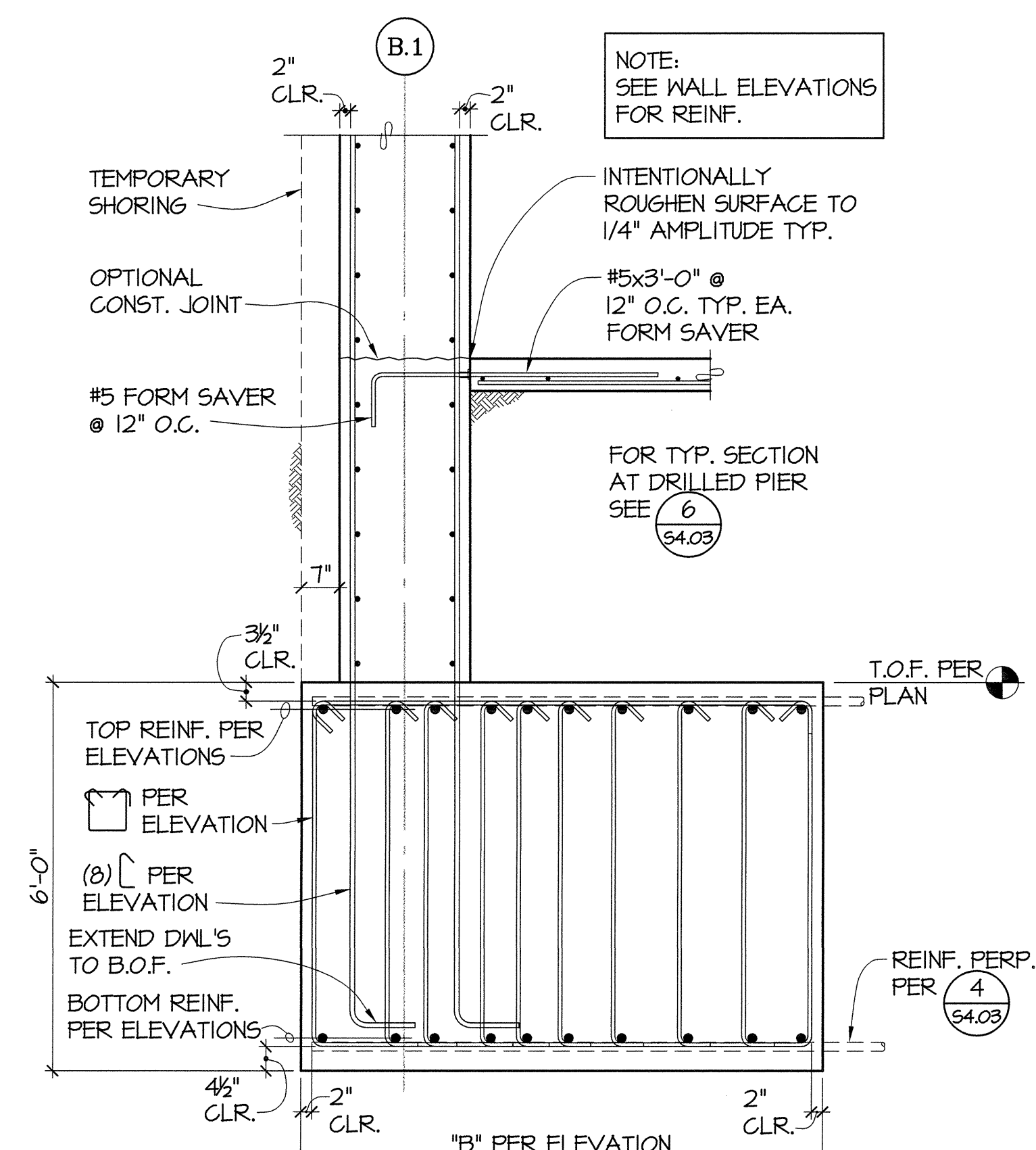
**SECTION**  
1/2"=1'-0"



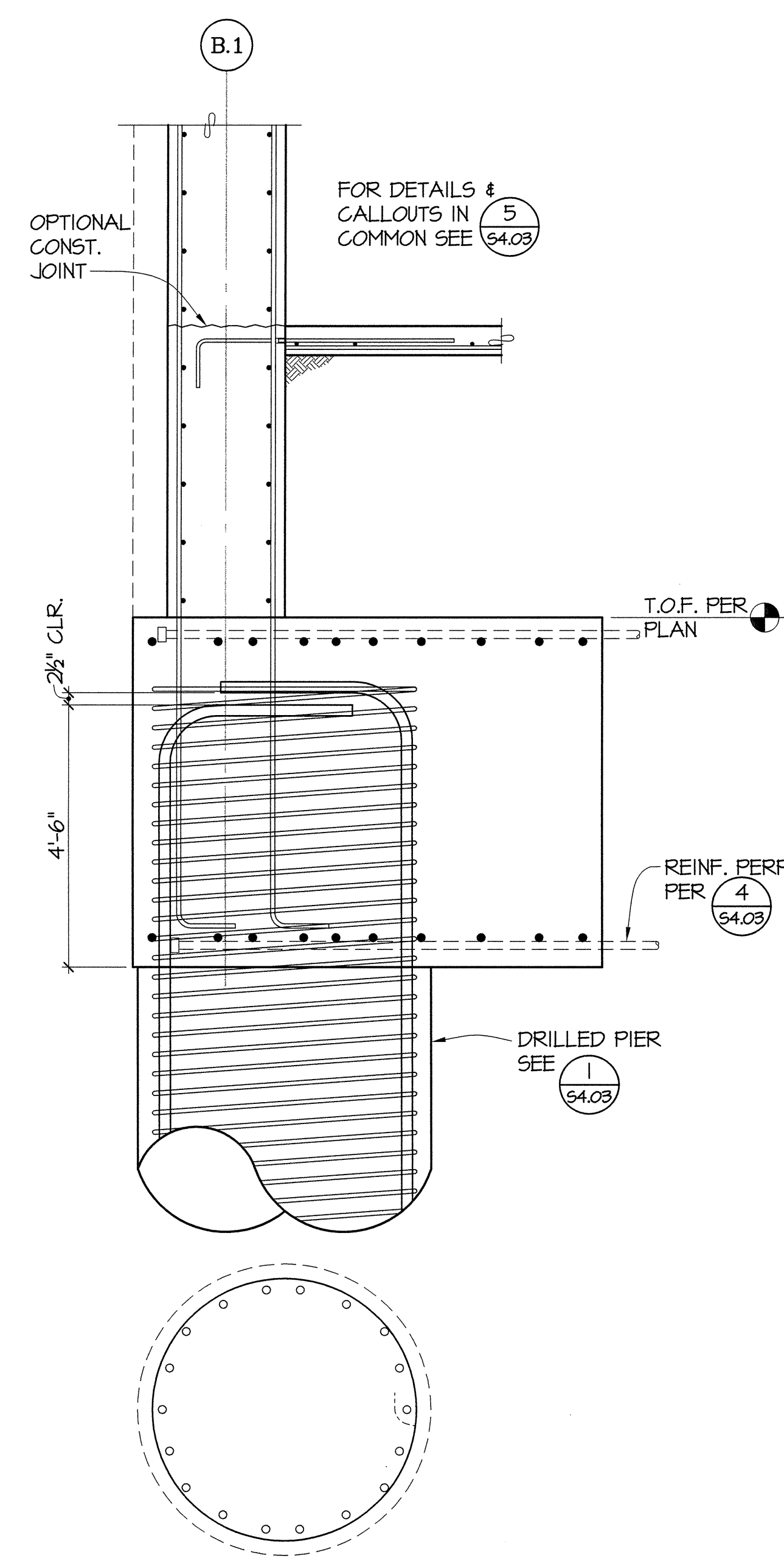
**SECTION**  
1/2"=1'-0"



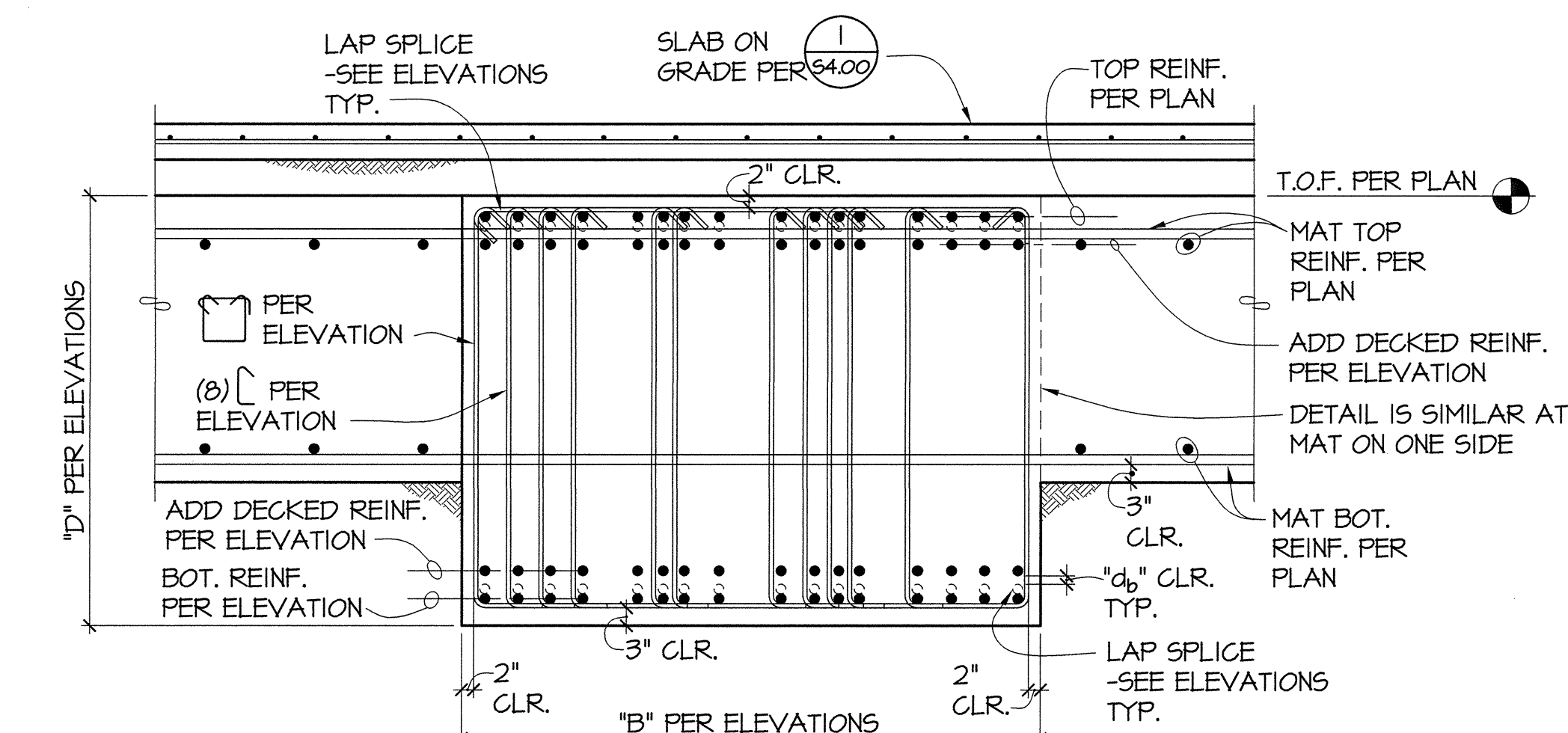
**SECTION**  
1/2"=1'-0"



**SECTION**  
1/2"=1'-0"



**SECTION**  
1/2"=1'-0"



**SECTION**  
1/2"=1'-0"

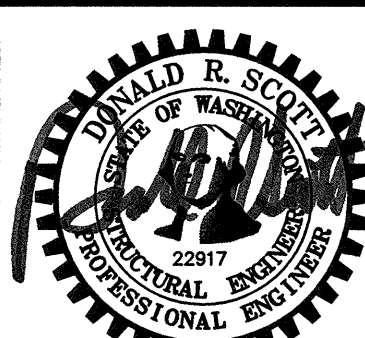


811 First Avenue, Suite 620  
Seattle, Washington 98104  
Tel: 206.362.0070

950 Pacific Avenue, Suite 1000  
Tacoma, Washington 98402  
Tel: 253.563.2797

GIFFIN • BOLTE • JURGENS  
ARCHITECTS

815 S.W. SECOND AVENUE • PORTLAND, OREGON 97204  
(503) 223-0992 www.gbjaarch.com FAX (503) 294-3961



MultiCare

EMERGENCY DEPARTMENT & CANCER CENTER EXPANSION

TACOMA, WASHINGTON

Date 09-26-2008  
Scale AS NOTED  
Drawn By MCS  
Job No. 4034

FOUNDATION  
DETAILS

S4  
03