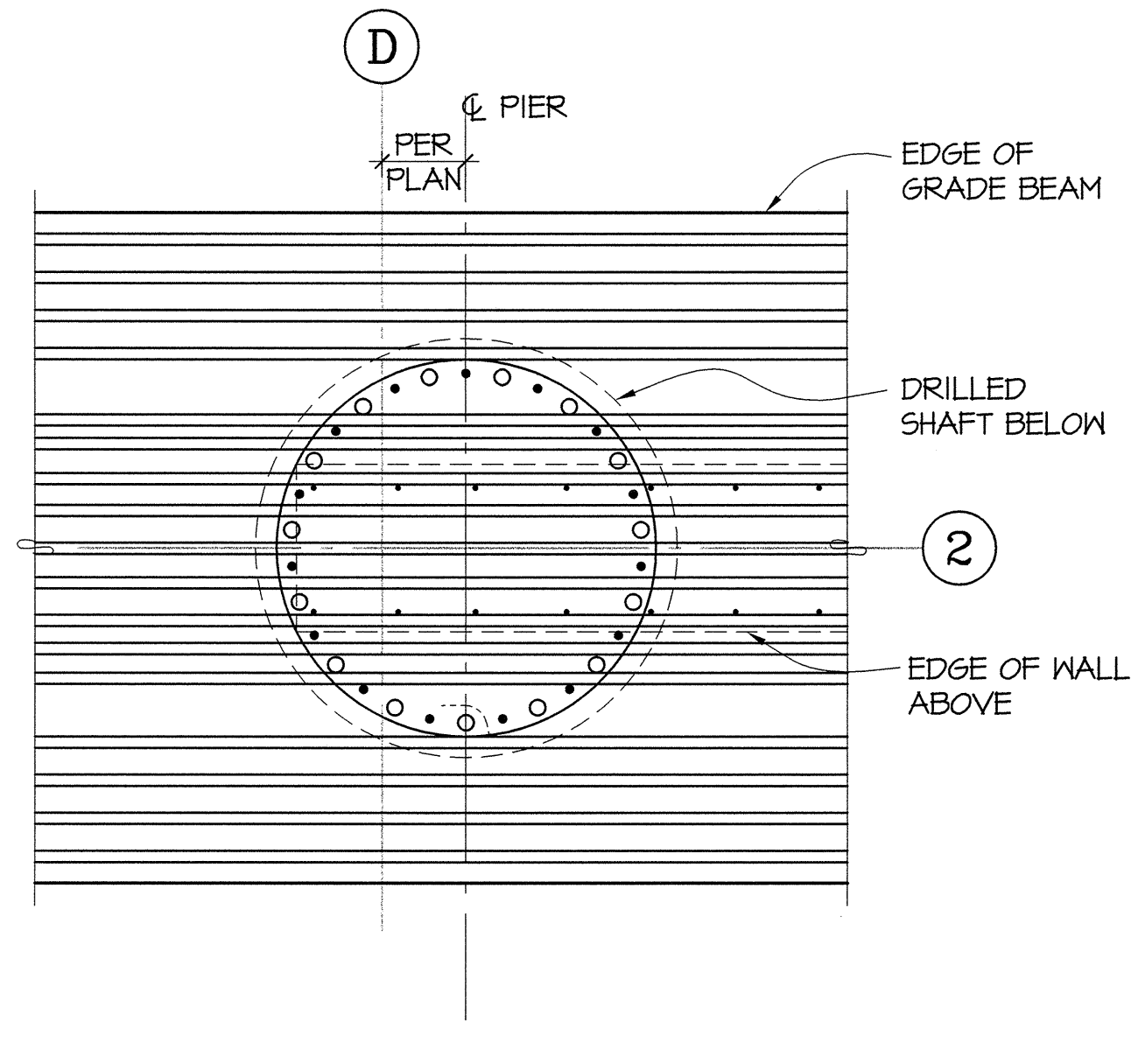
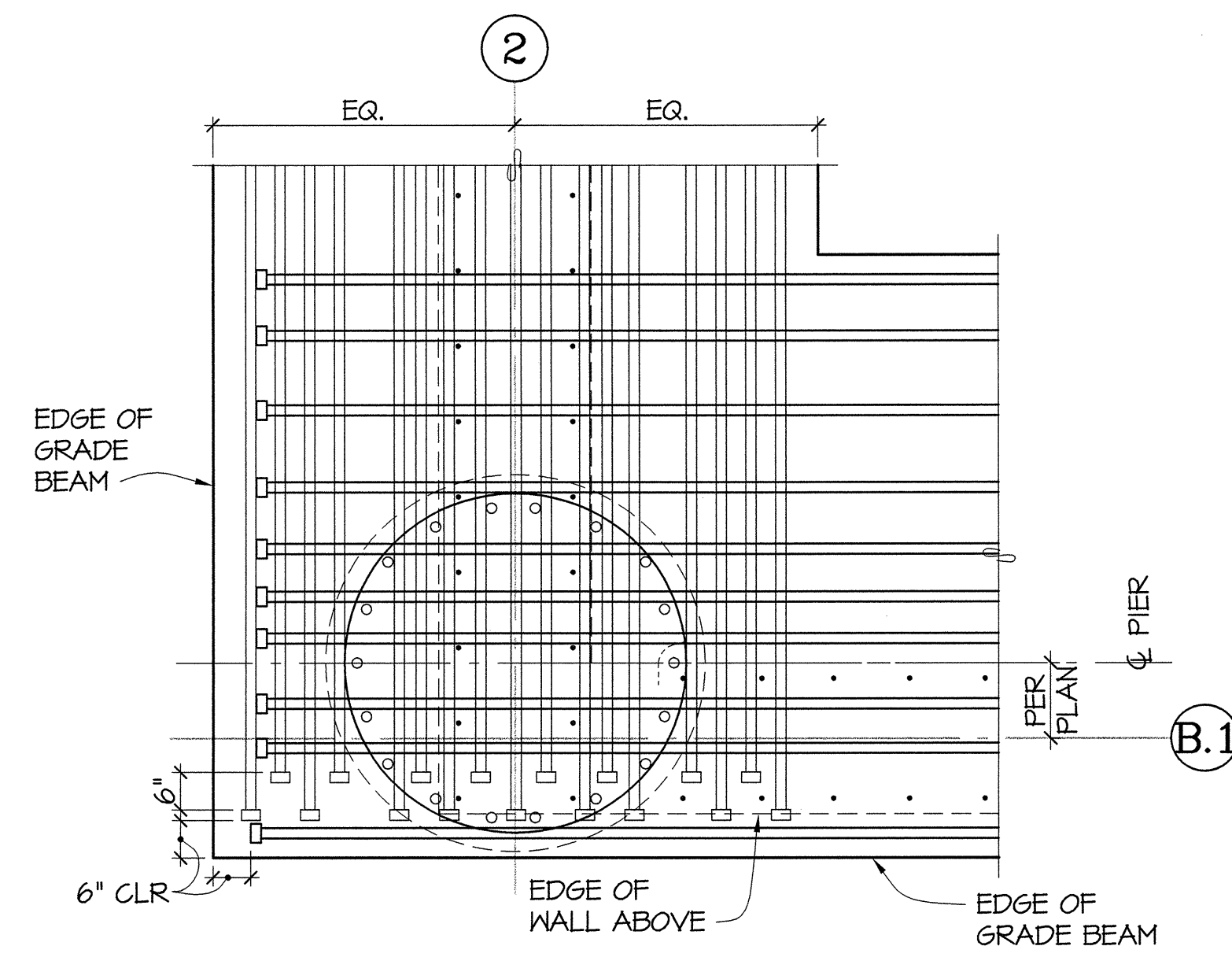


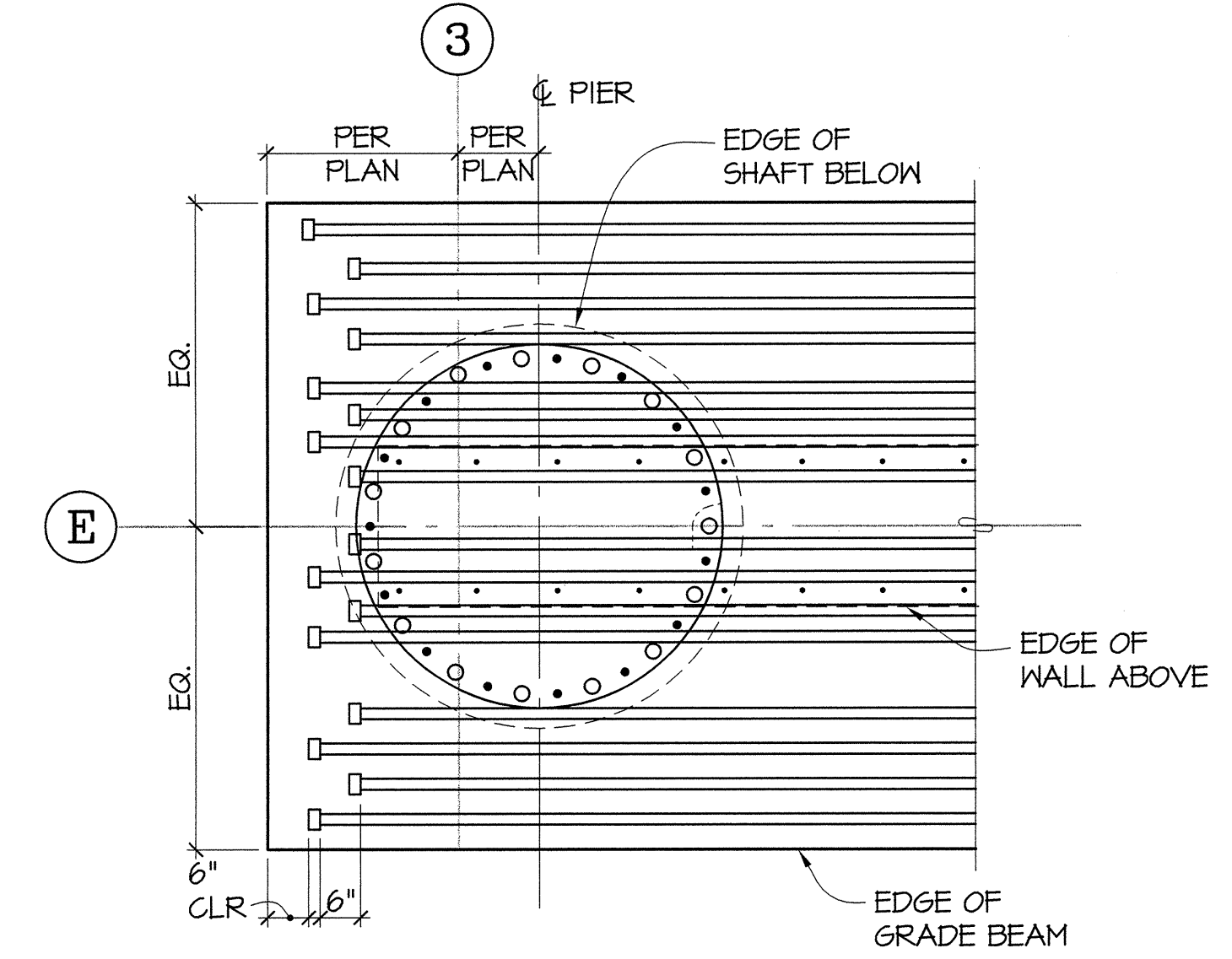
1 PLAN DETAIL
S4.05 1/2"=1'-0"



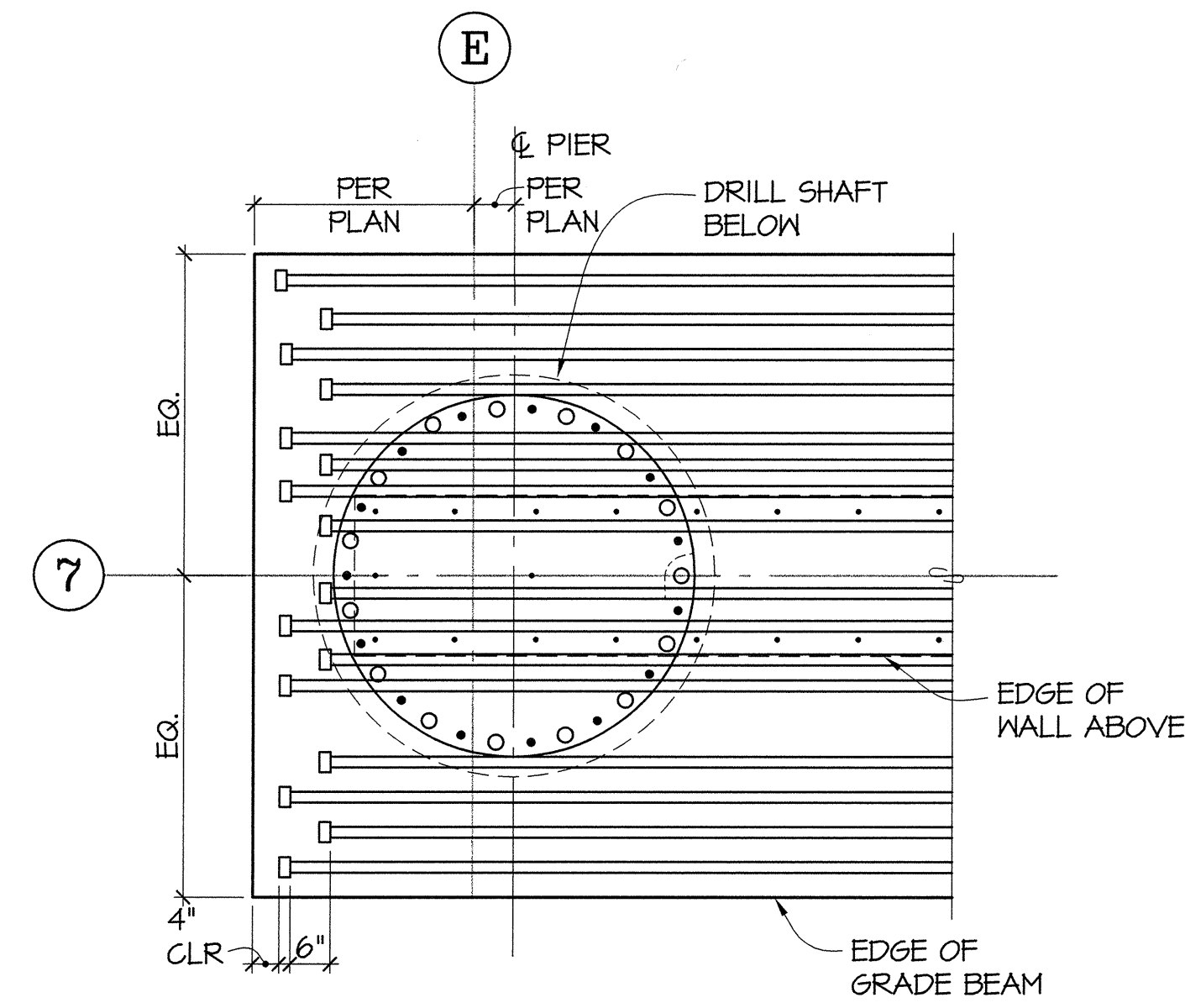
2 PLAN DETAIL
S4.05 1/2"=1'-0"



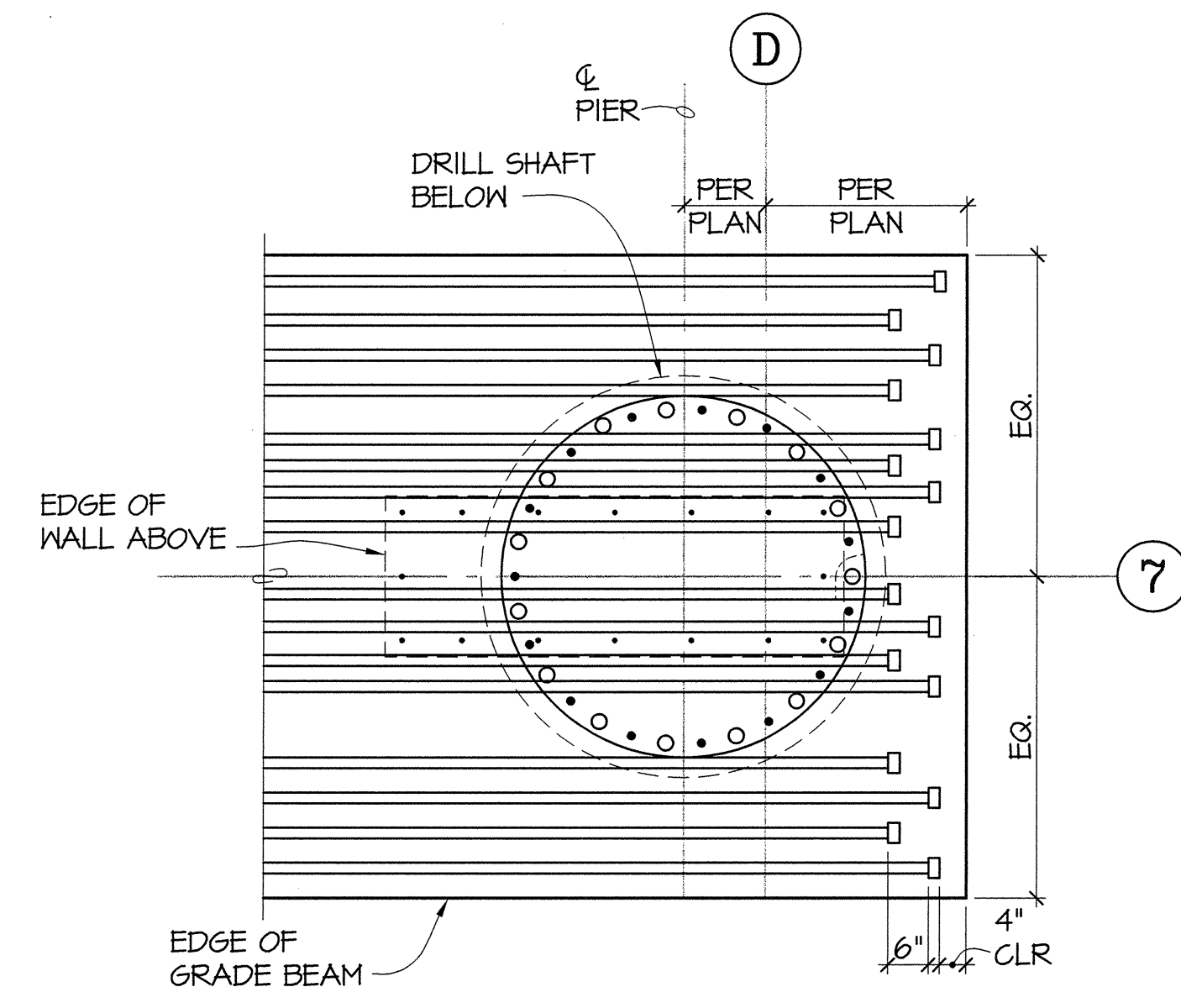
3 PLAN DETAIL
S4.05 1/2"=1'-0"



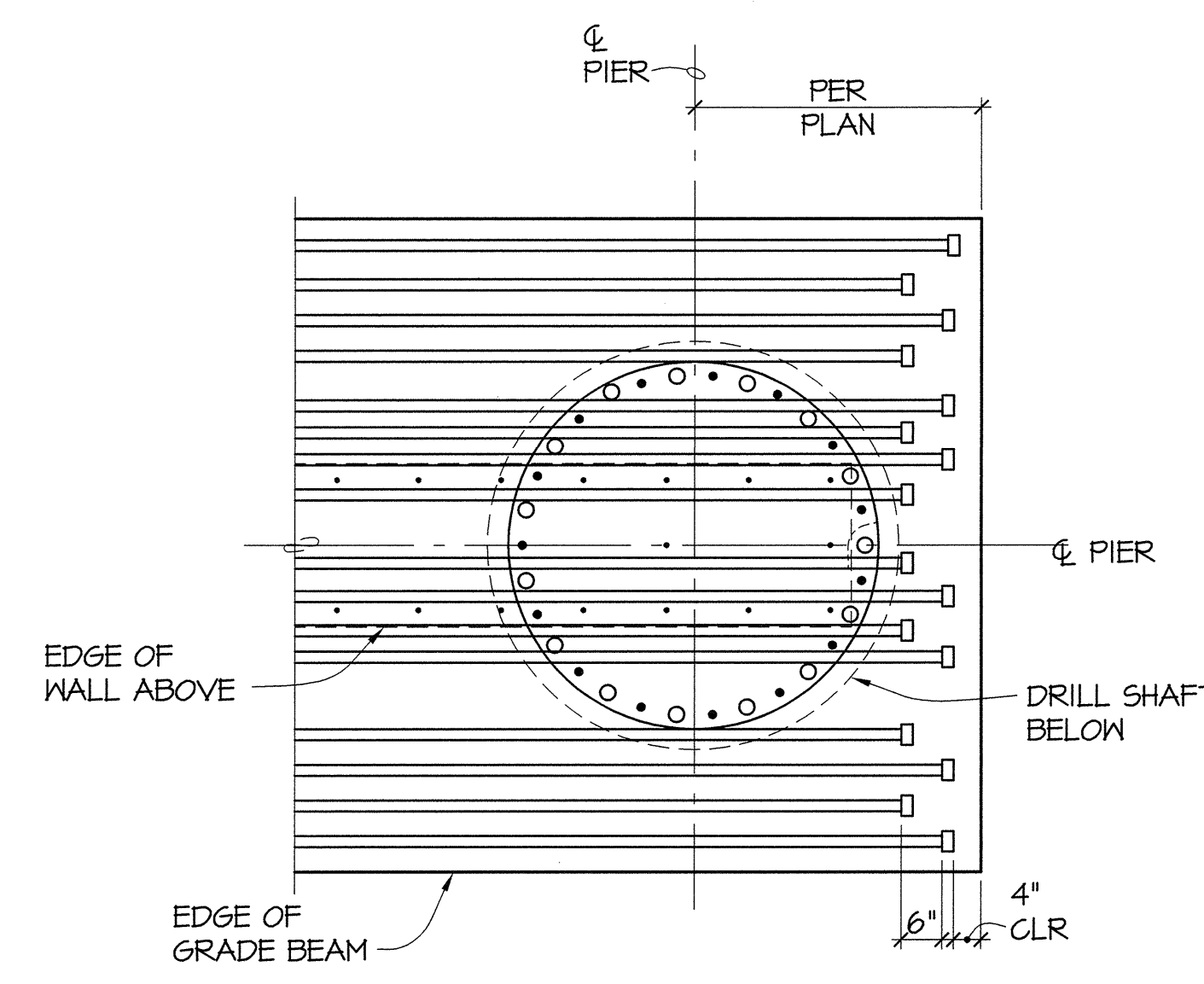
4 PLAN DETAIL
S4.05 1/2"=1'-0"



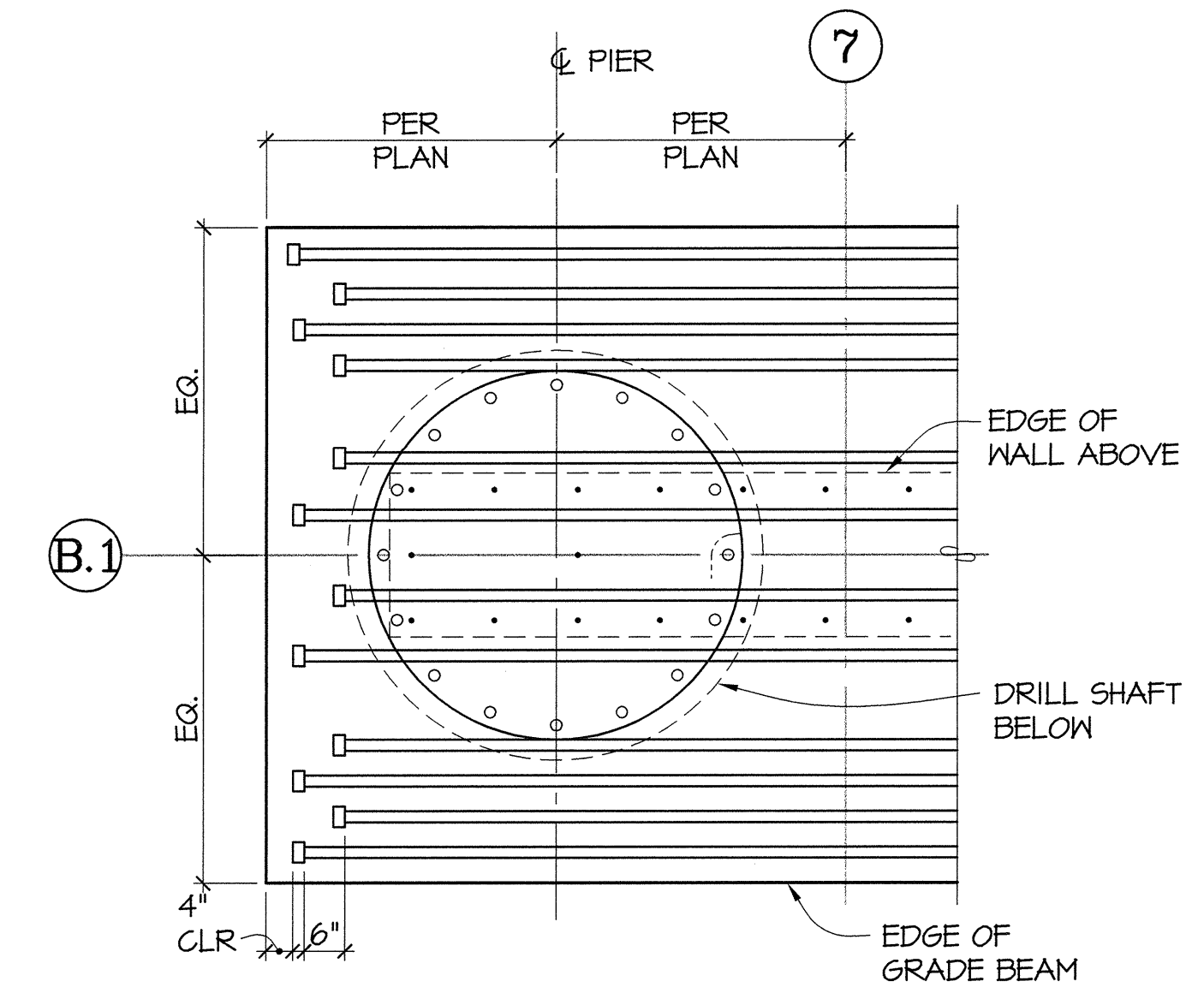
5 PLAN DETAIL
S4.05 1/2"=1'-0"



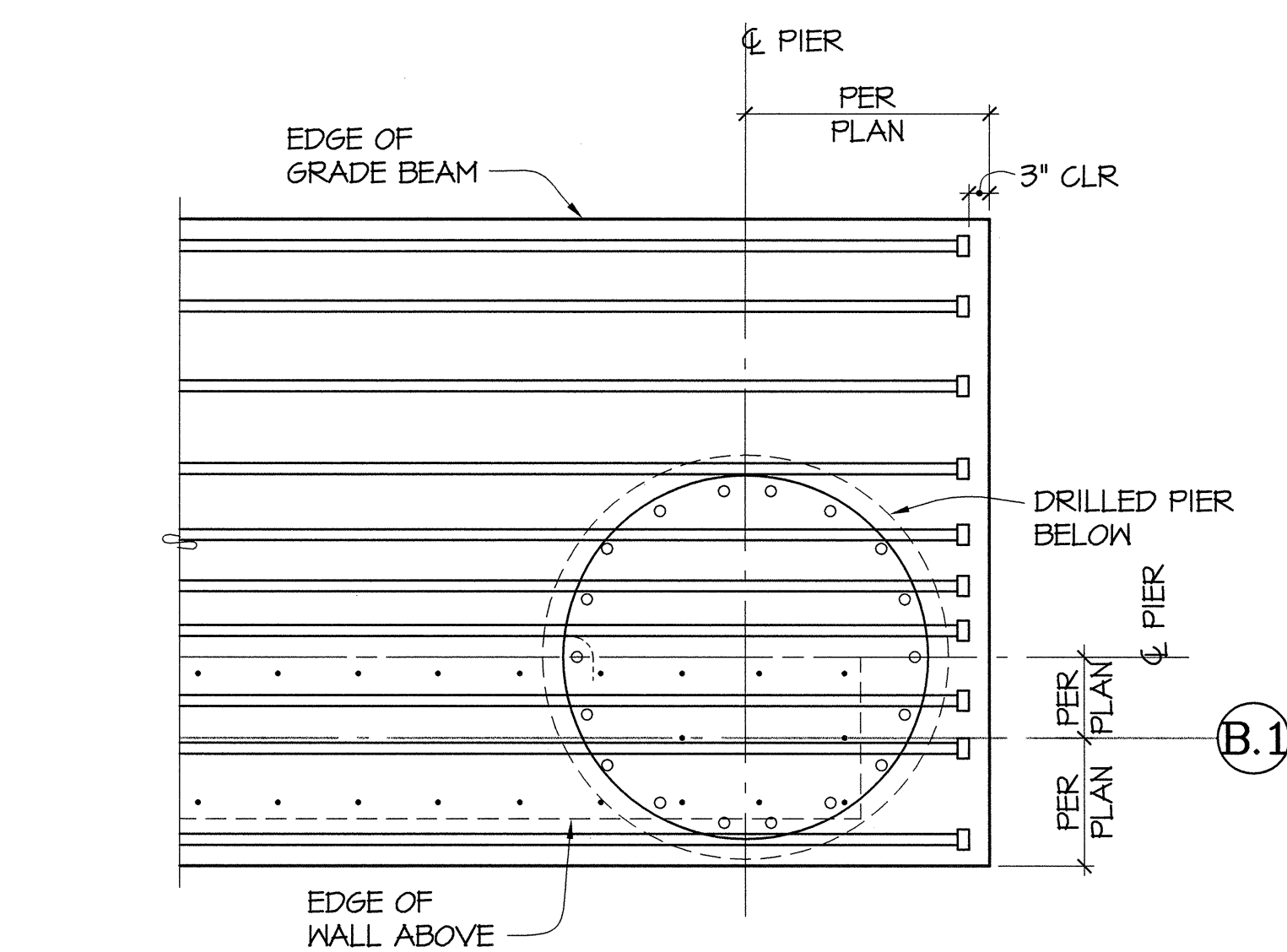
6 PLAN DETAIL
S4.05 1/2"=1'-0"



7 PLAN DETAIL
S4.05 1/2"=1'-0"



8 PLAN DETAIL
S4.05 1/2"=1'-0"



9 PLAN DETAIL
S4.05 1/2"=1'-0"

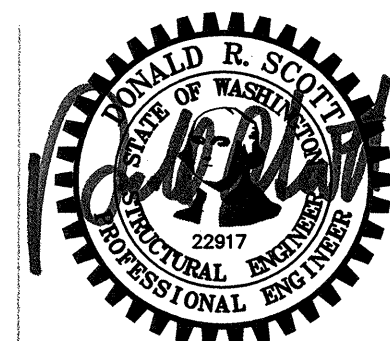


811 First Avenue, Suite 600
Seattle, Washington 98104
tel 206.262.5076

950 Pacific Avenue, Suite 1100
Tacoma, Washington 98402
tel 253.363.2797

GIFFIN • BOLTE • JURGENS
ARCHITECTS

815 S.W. SECOND AVENUE - PORTLAND, OREGON 97204
(503) 223-0992 www.gbjarch.com FAX (503) 294-3961



MultiCare

EMERGENCY DEPARTMENT & CANCER CENTER EXPANSION

TACOMA, WASHINGTON

Date 09-26-2008
Scale AS NOTED
Drawn By DM
Job No. 4034

FOUNDATION
DETAILS

S4
05