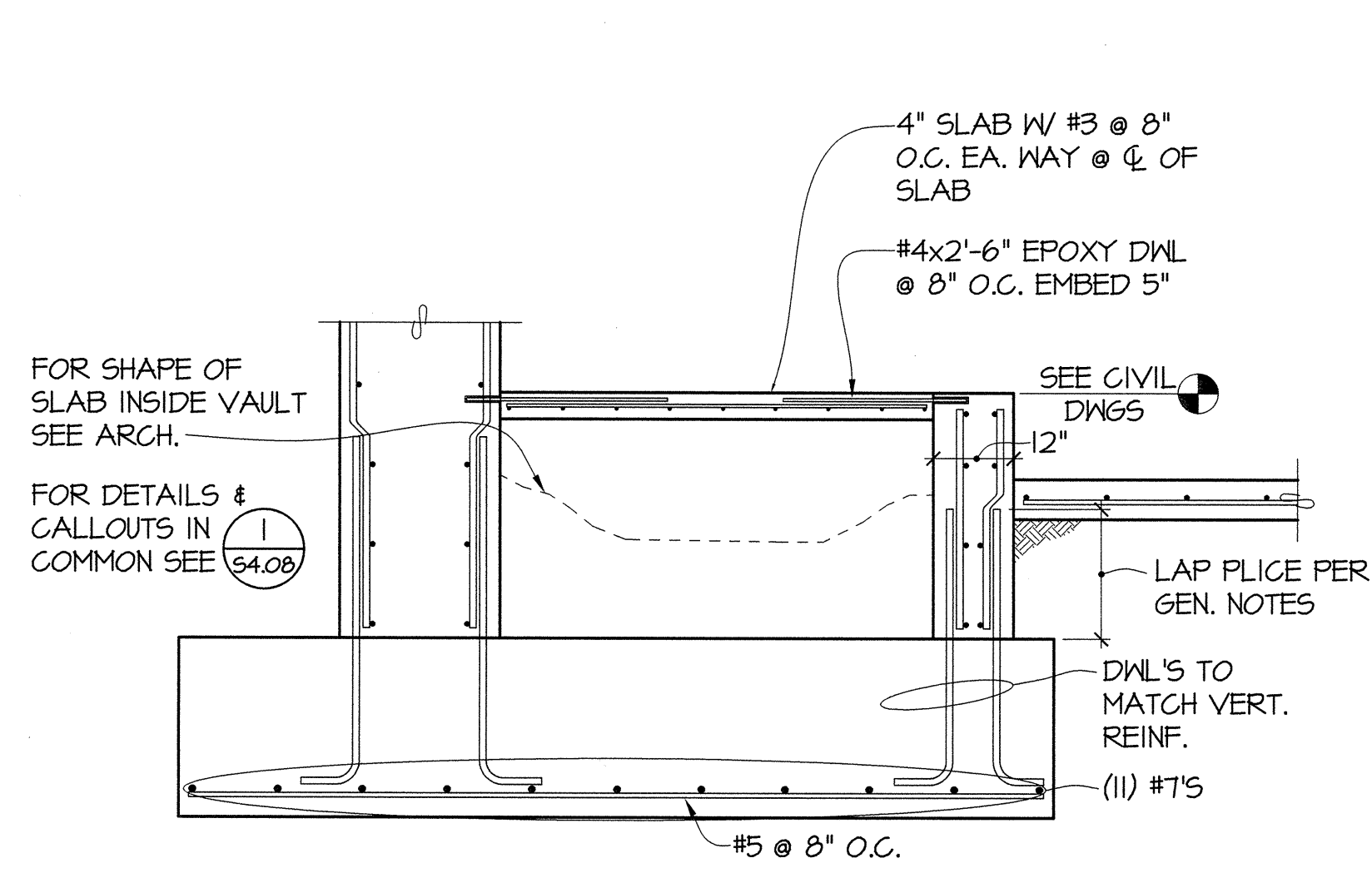
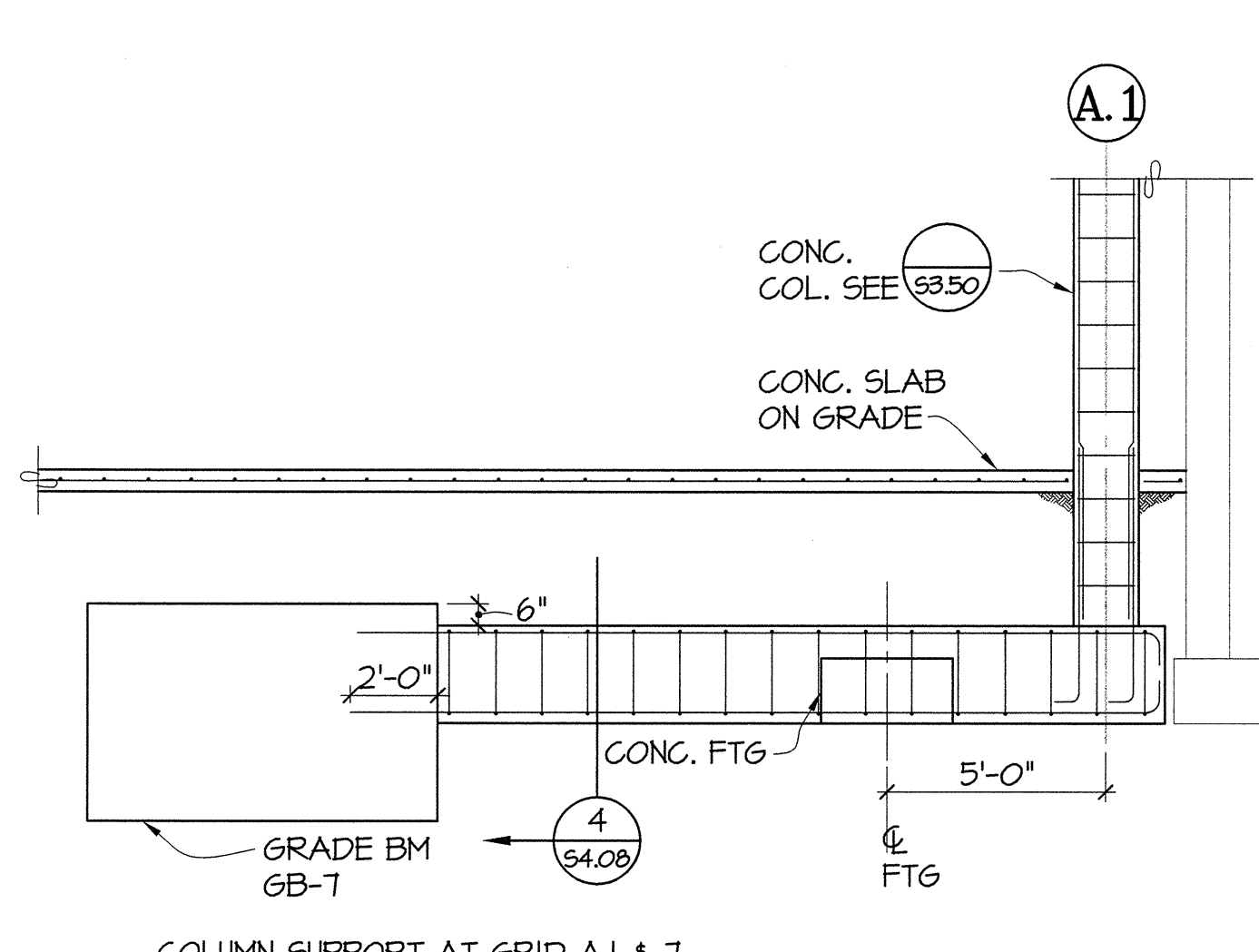


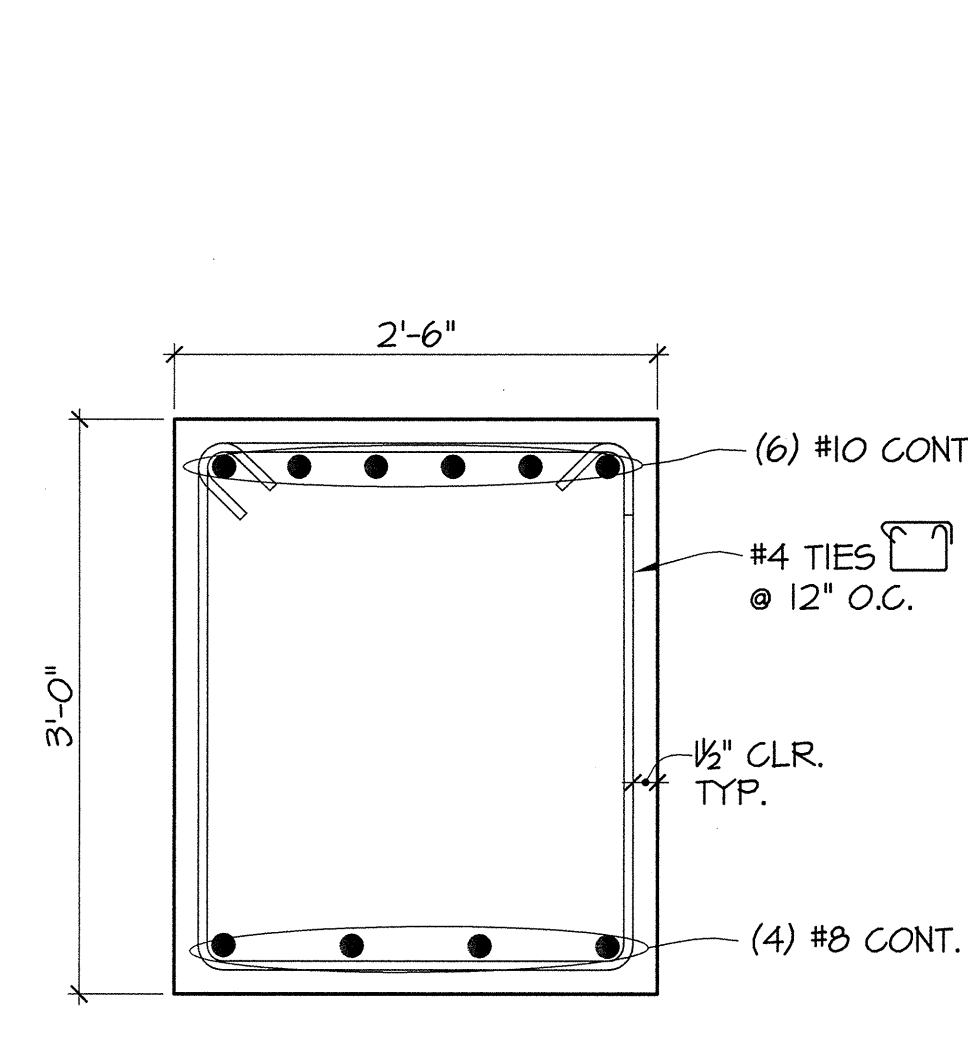
1 PLAN
54.08 1/2"=1'-0"



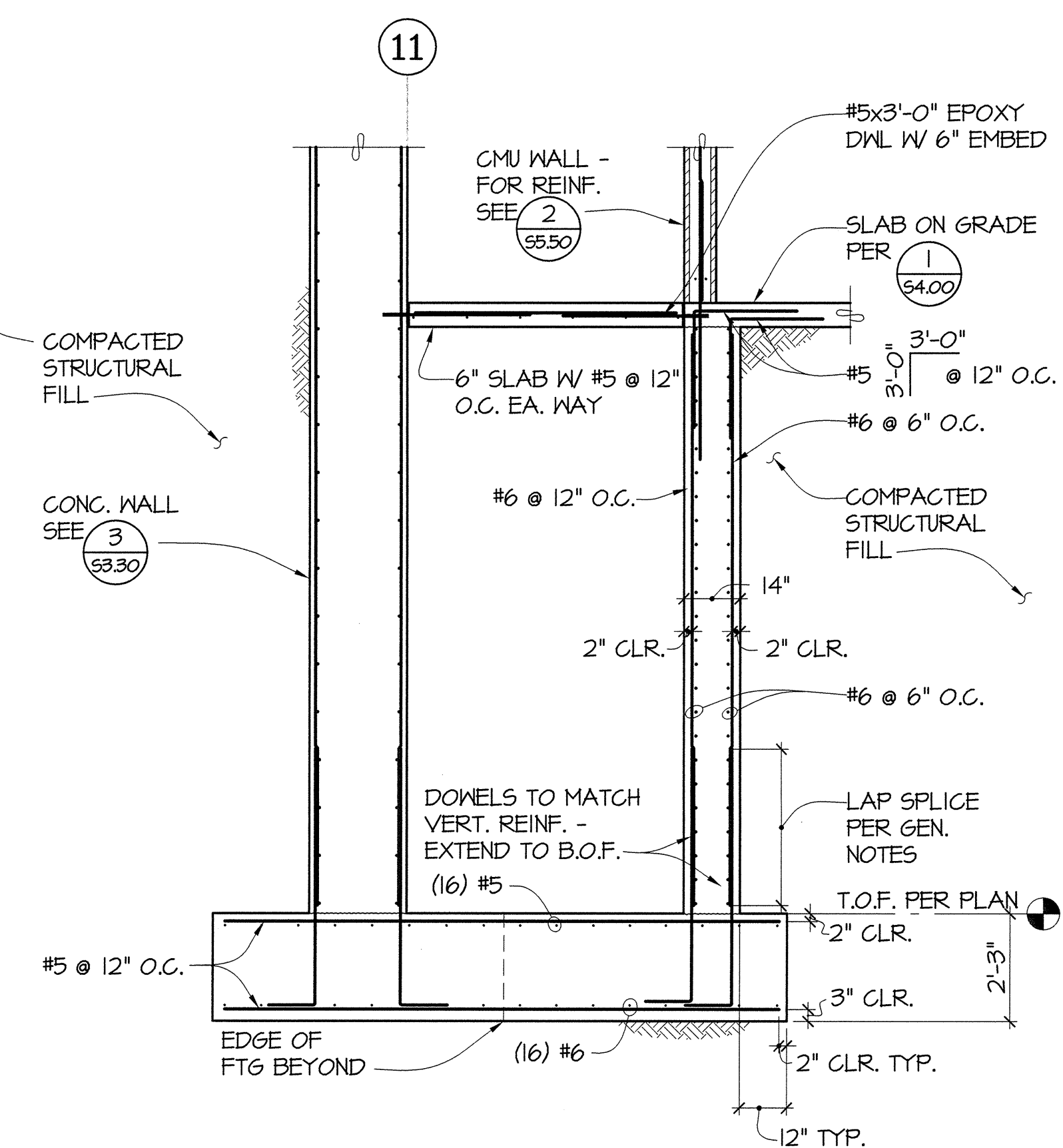
2 SECTION
54.08 1/2"=1'-0"



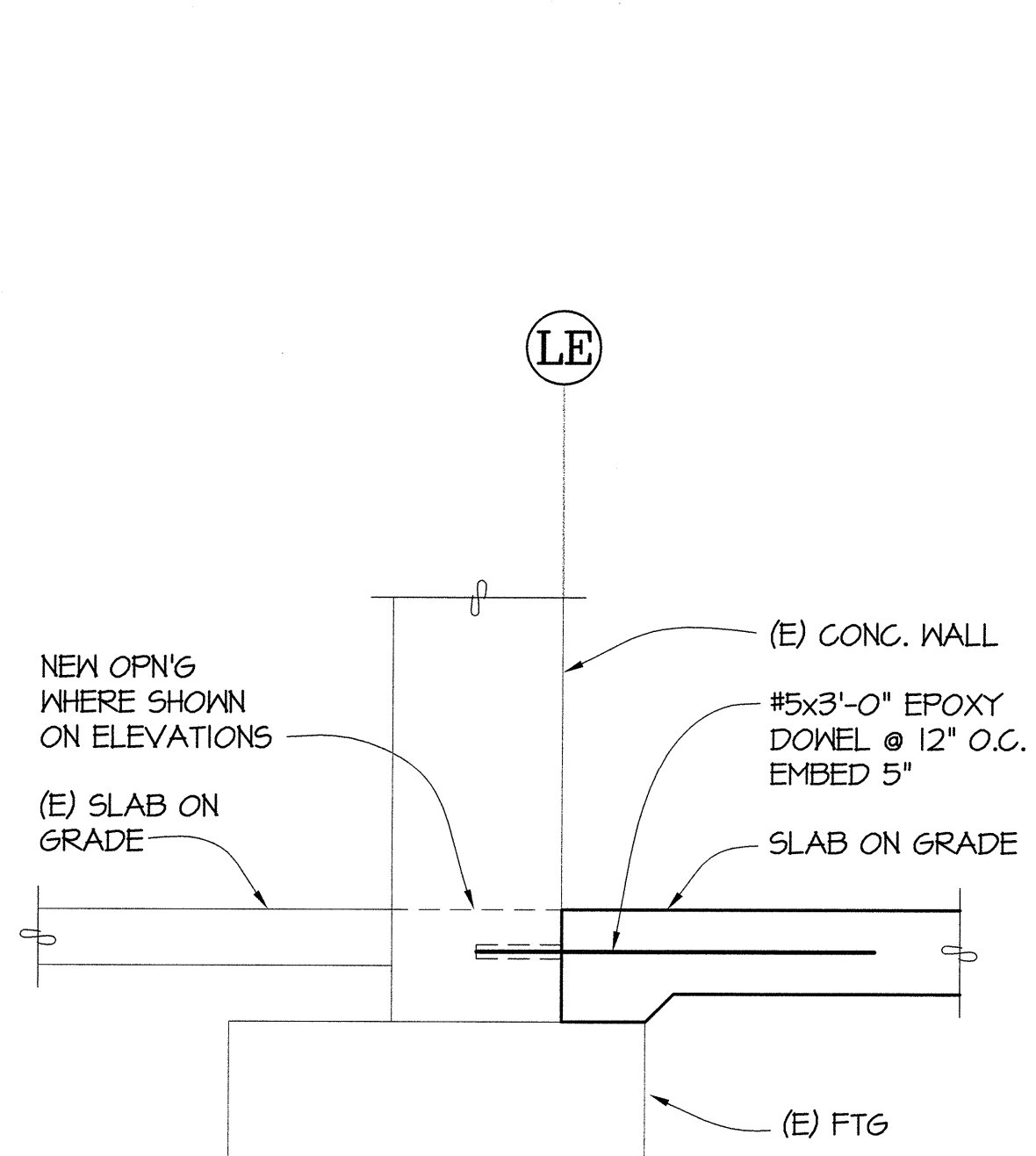
3 ELEVATION
54.08 1/4"=1'-0"



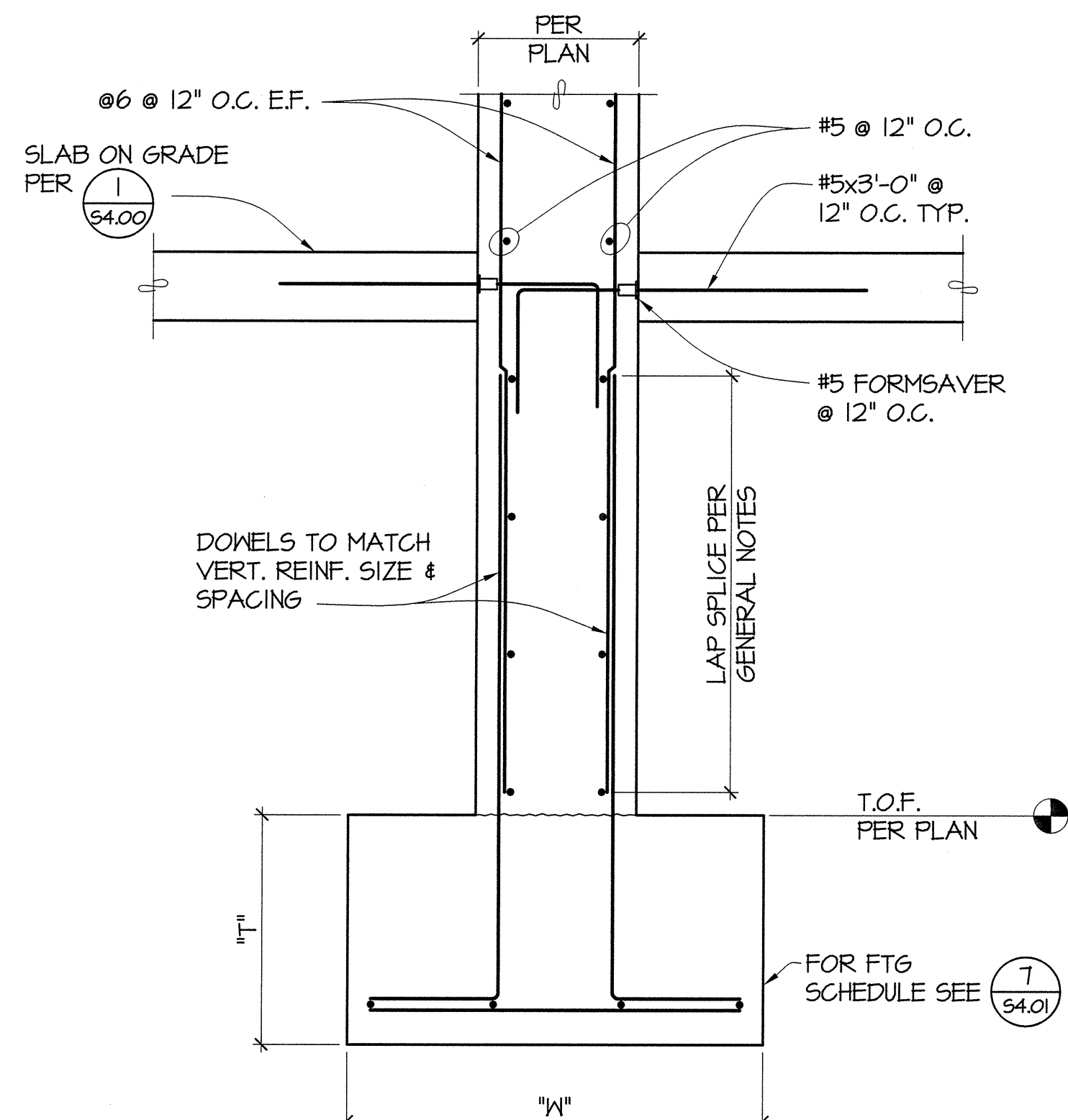
4 SECTION
54.08 1"=1'-0"



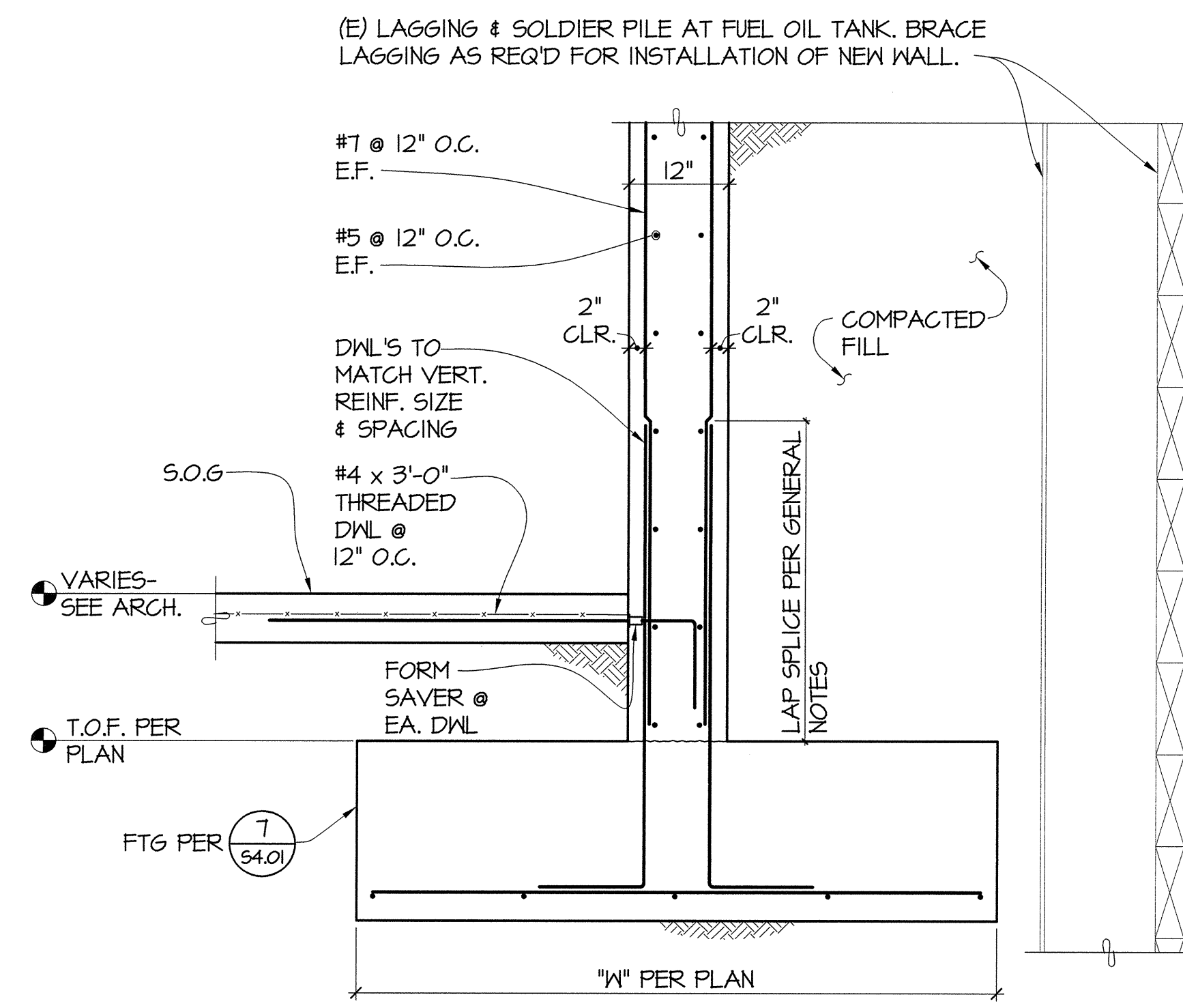
5 SECTION
54.08 3/8"=1'-0"



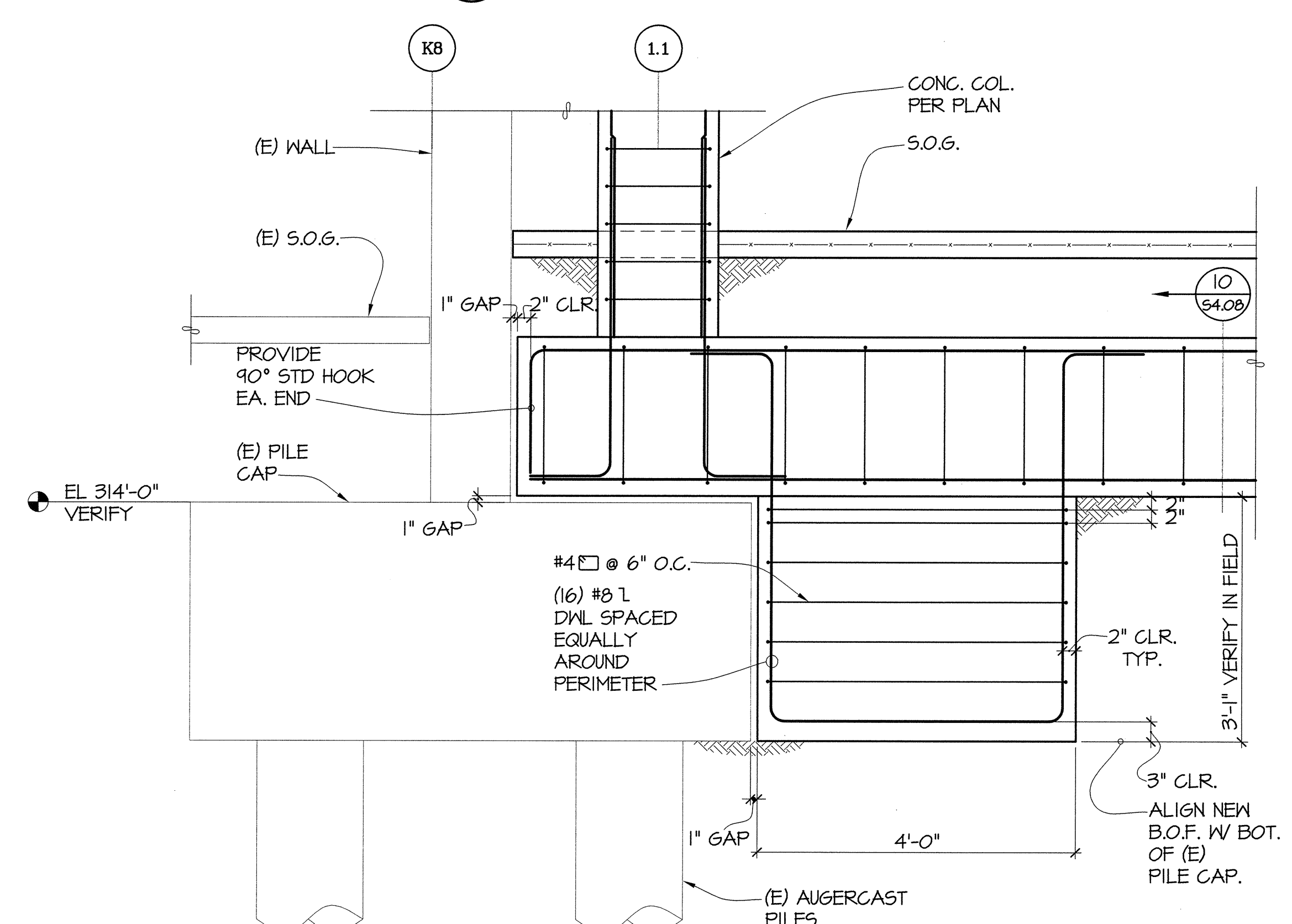
6 SECTION
54.08 1"=1'-0"



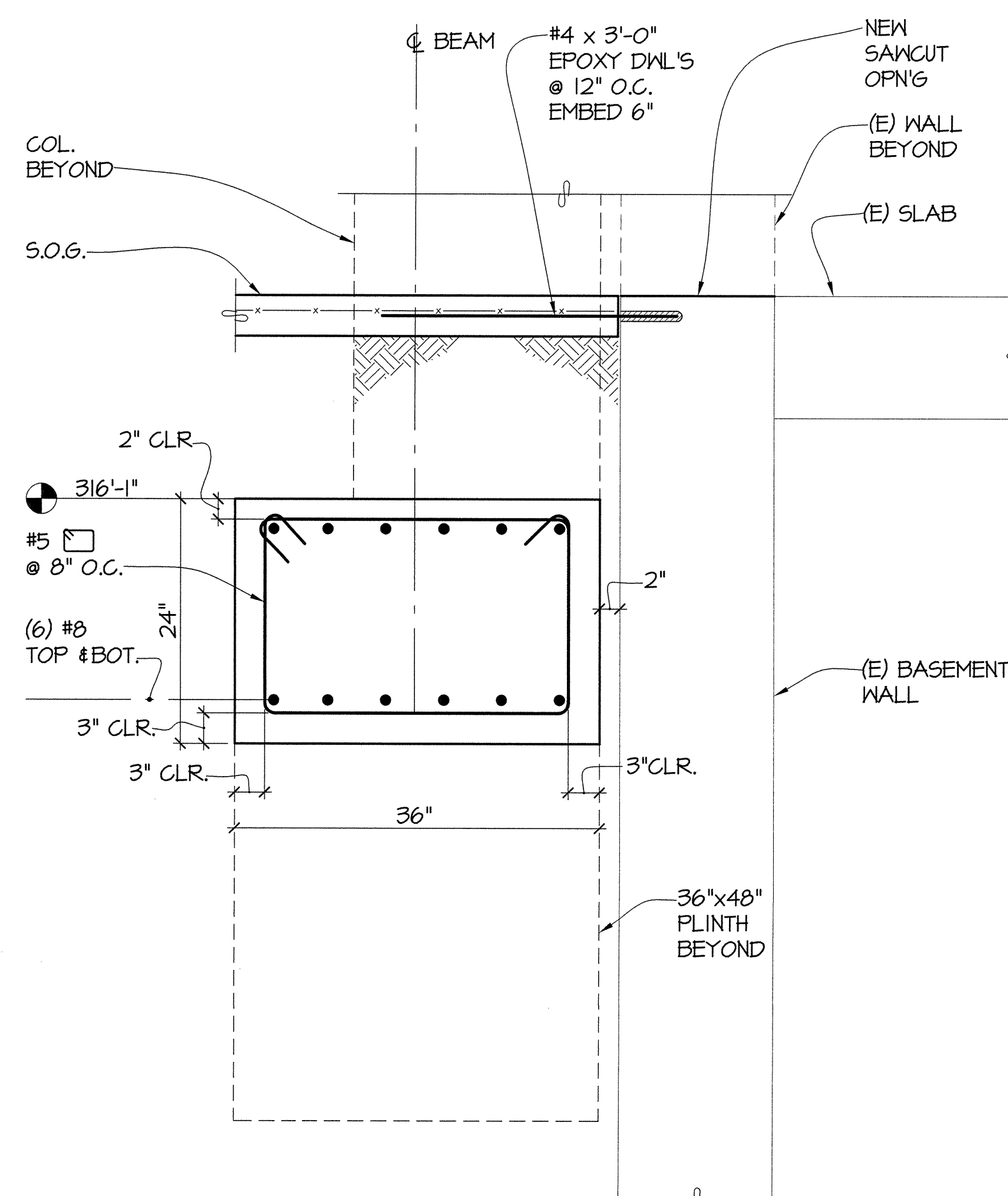
7 SECTION
54.08 1"=1'-0"



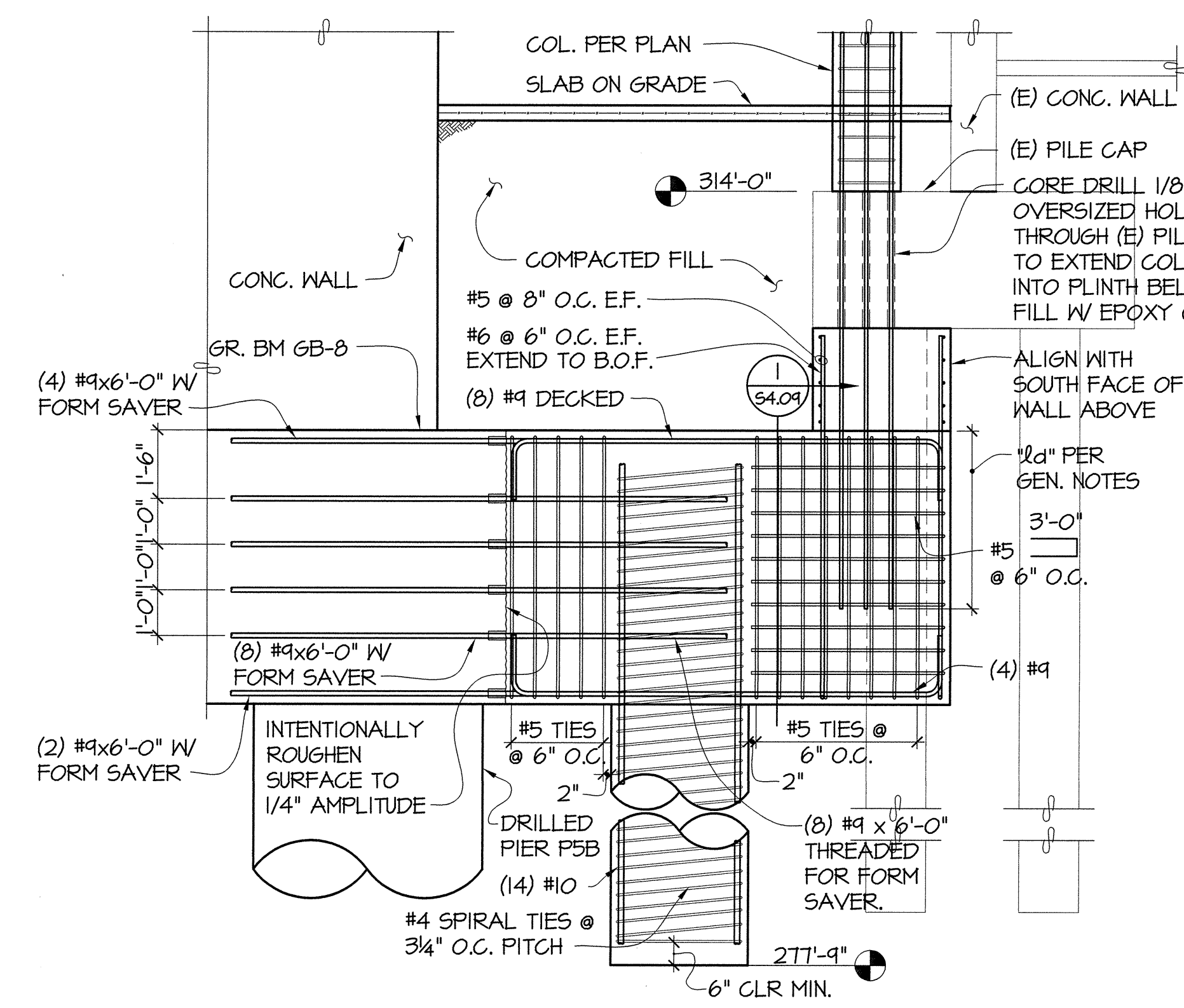
8 SECTION
54.08 3/4"=1'-0"



9 SECTION
54.08 3/4"=1'-0"



10 SECTION
54.08 1"=1'-0"

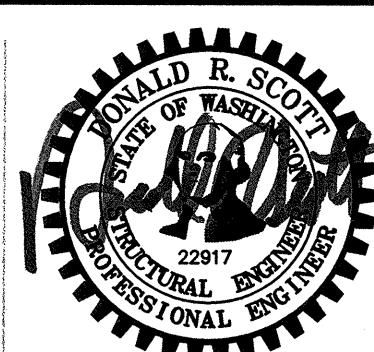


11 SECTION
54.08 3/8"=1'-0"



811 First Avenue, Suite 600
Seattle, Washington 98104
Tel: 206.262.2076

800 Pacific Avenue, Suite 100
Tacoma, Washington 98402
Tel: 253.383.2797



GIFFIN • BOLTE • JURGENS P.C.
ARCHITECTS

815 S.W. SECOND AVENUE - PORTLAND, OREGON 97204
(503) 223-0992 www.gbjarch.com FAX (503) 294-3761

MultiCare

EMERGENCY DEPARTMENT & CANCER CENTER EXPANSION

TACOMA, WASHINGTON

Date 09-26-2008
Scale AS NOTED
Drawn By DM
Job No. 4034

FOUNDATION
DETAILS

S4
08