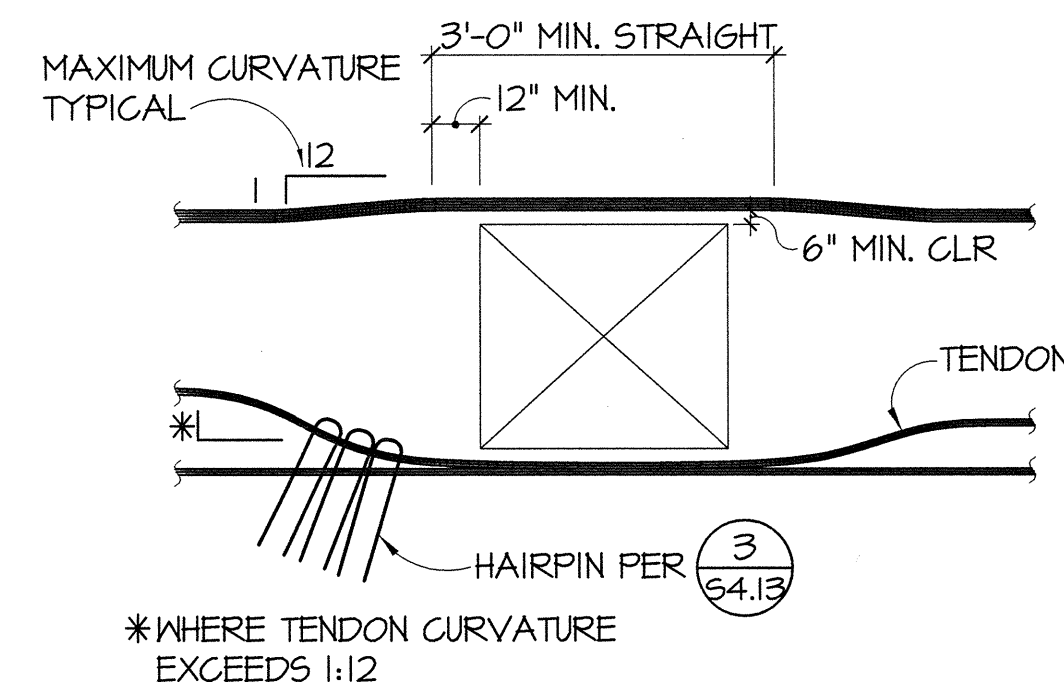


NOTES:
NA = MID-DEPTH FOR UNIFORM THICKNESS SLAB.
SEE PLAN FOR ACTUAL STRESSING DIRECTIONS.

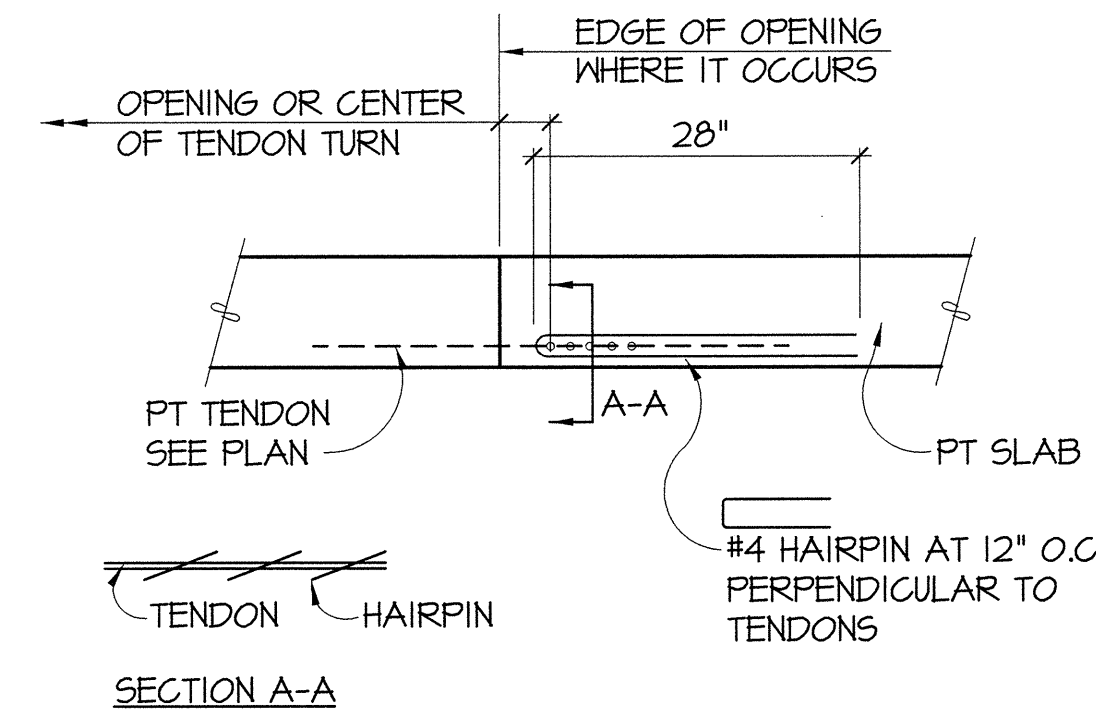
POST-TENSIONING PROFILE

1 ELEVATION
S4.13 NO SCALE



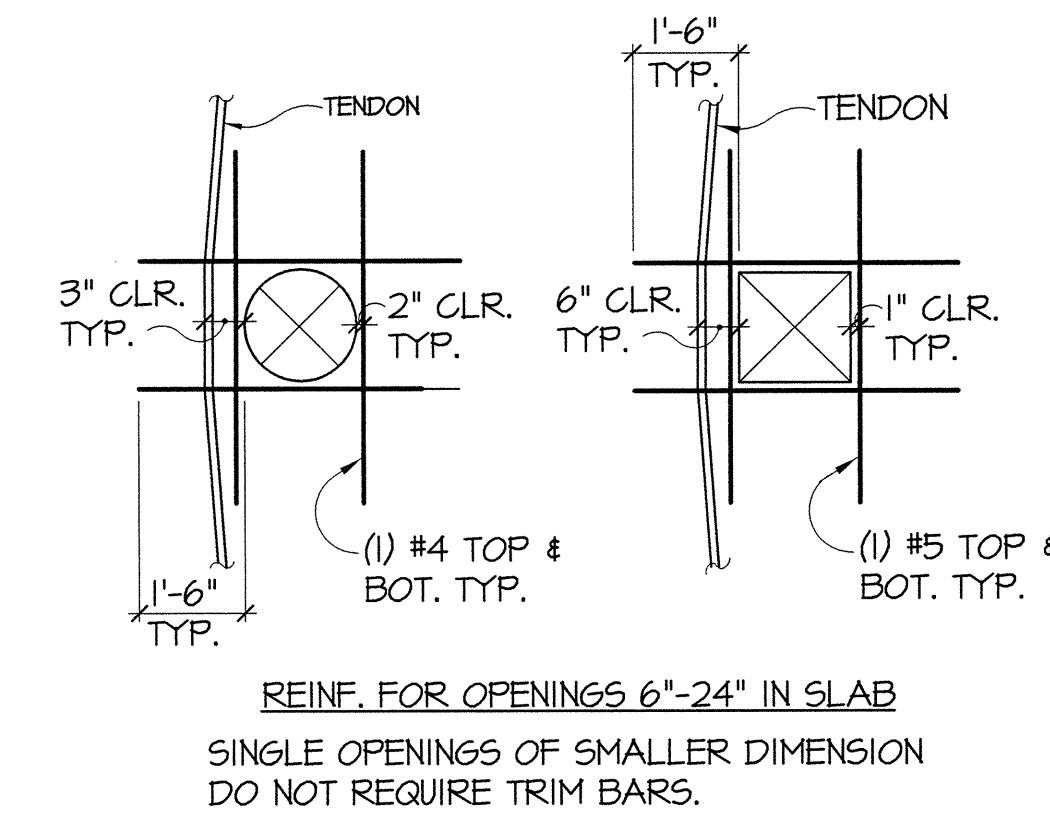
TYPICAL TENDON PLACEMENT AT OPENING 24" OR LARGER

2 PLAN DETAIL
S4.13 NO SCALE



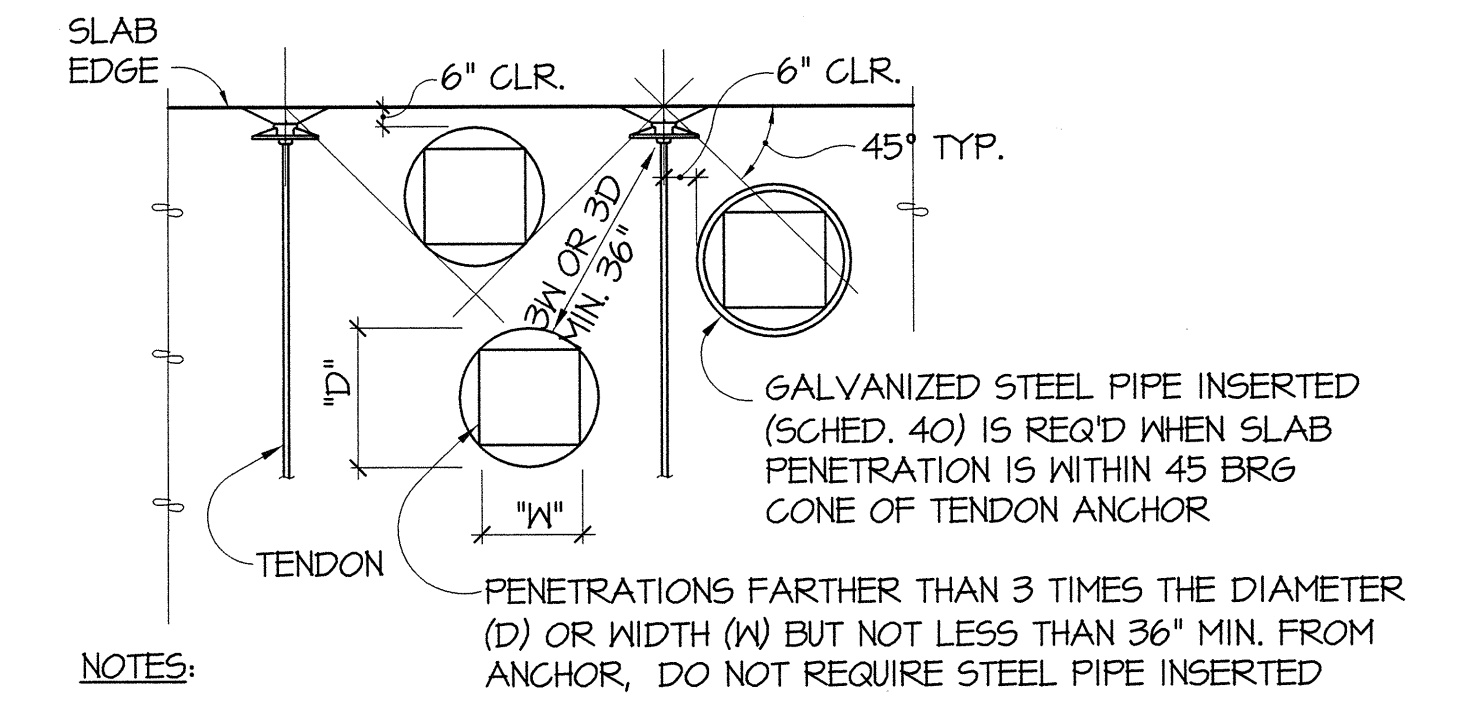
TYPICAL HAIRPIN AT TENDON TURNS

3 SECTION
S4.13 NO SCALE



TYPICAL TRIM BARS AT SLAB OPENING

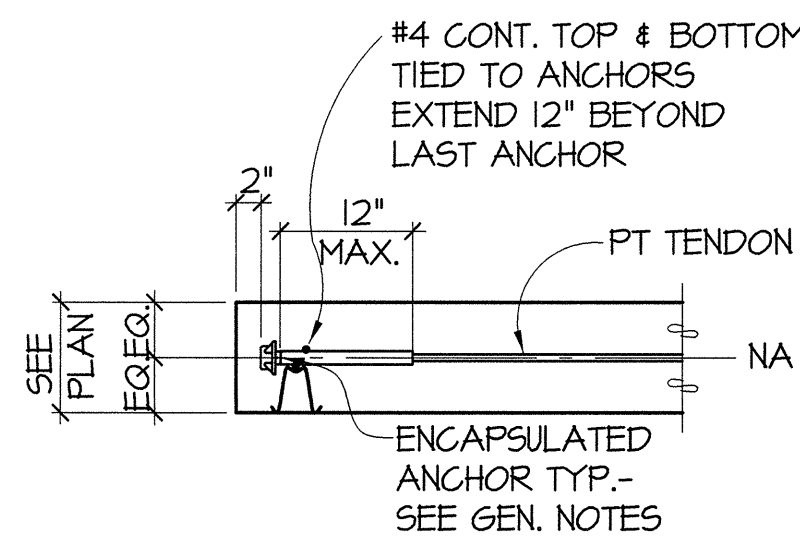
4 PLAN DETAIL
S4.13 NO SCALE



NOTES:
1. PENETRATION WITH DIMENSIONS GREATER THAN 6" REQUIRE TRIM REBAR PER TYP DETAIL.
2. NO CORING OF POST-TENSIONED ALLOWED. ALL PENETRATIONS SHALL BE SLEEVED OR FORMED. PROVIDE REINF. PER X/SX.X.

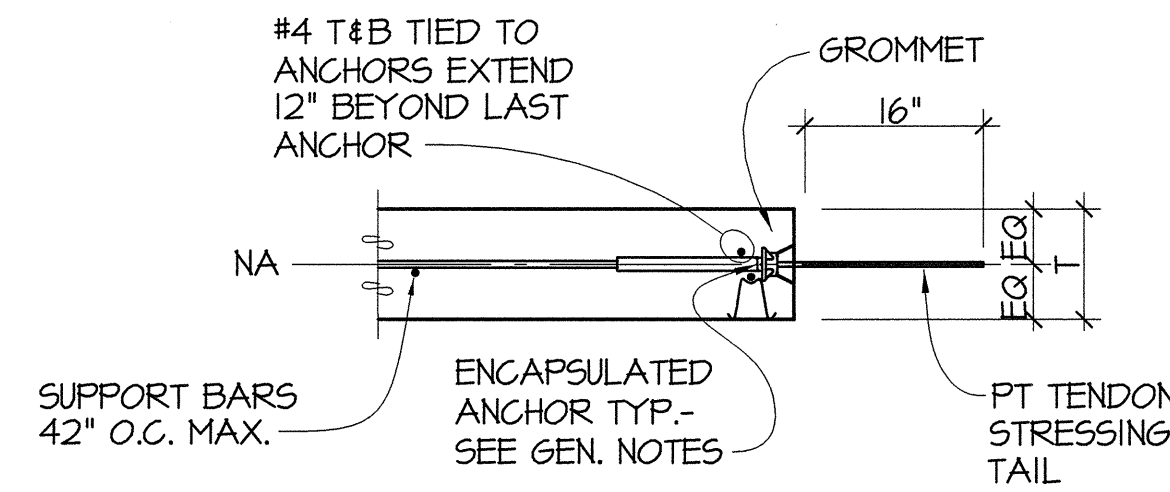
OPENINGS AT PT ANCHORAGE

5 PLAN DETAIL
S4.13 NO SCALE



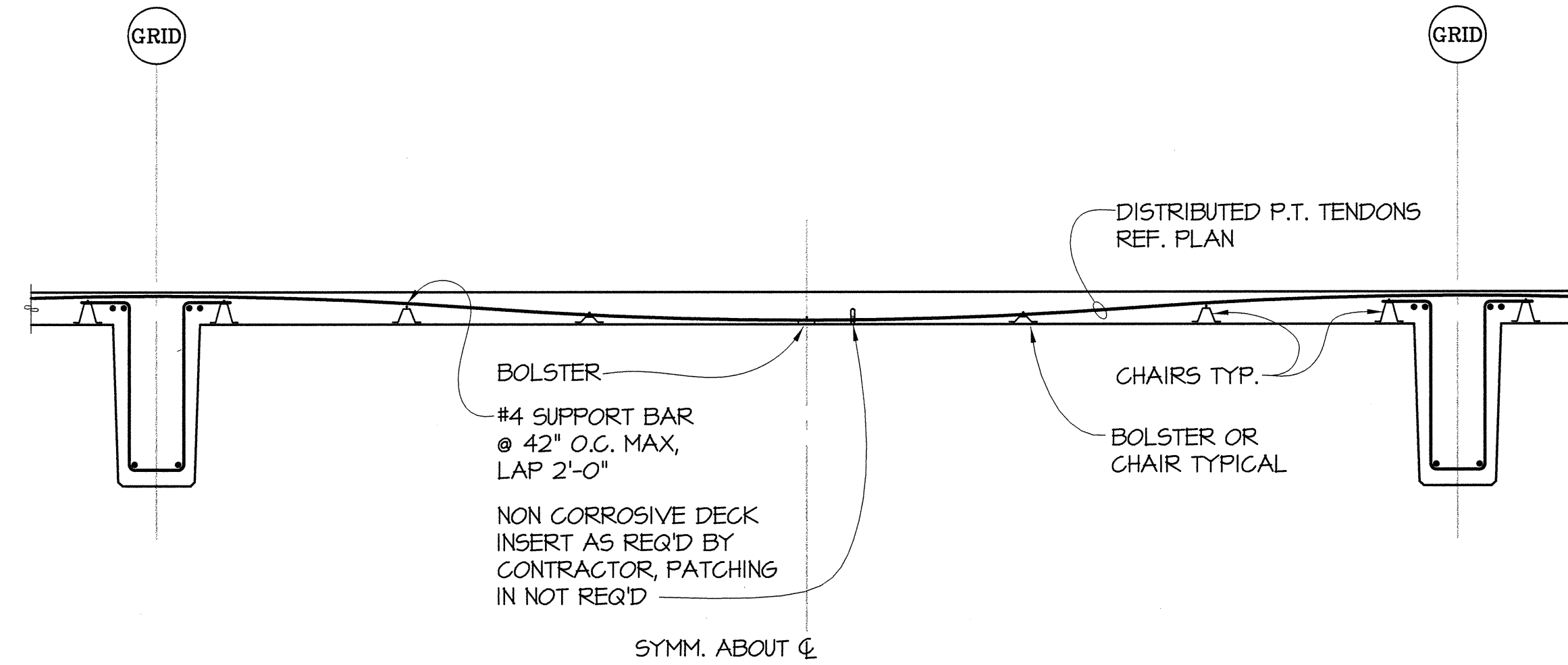
DEAD END AT DISTRIBUTED TENDONS

6 SECTION
S4.13 NO SCALE



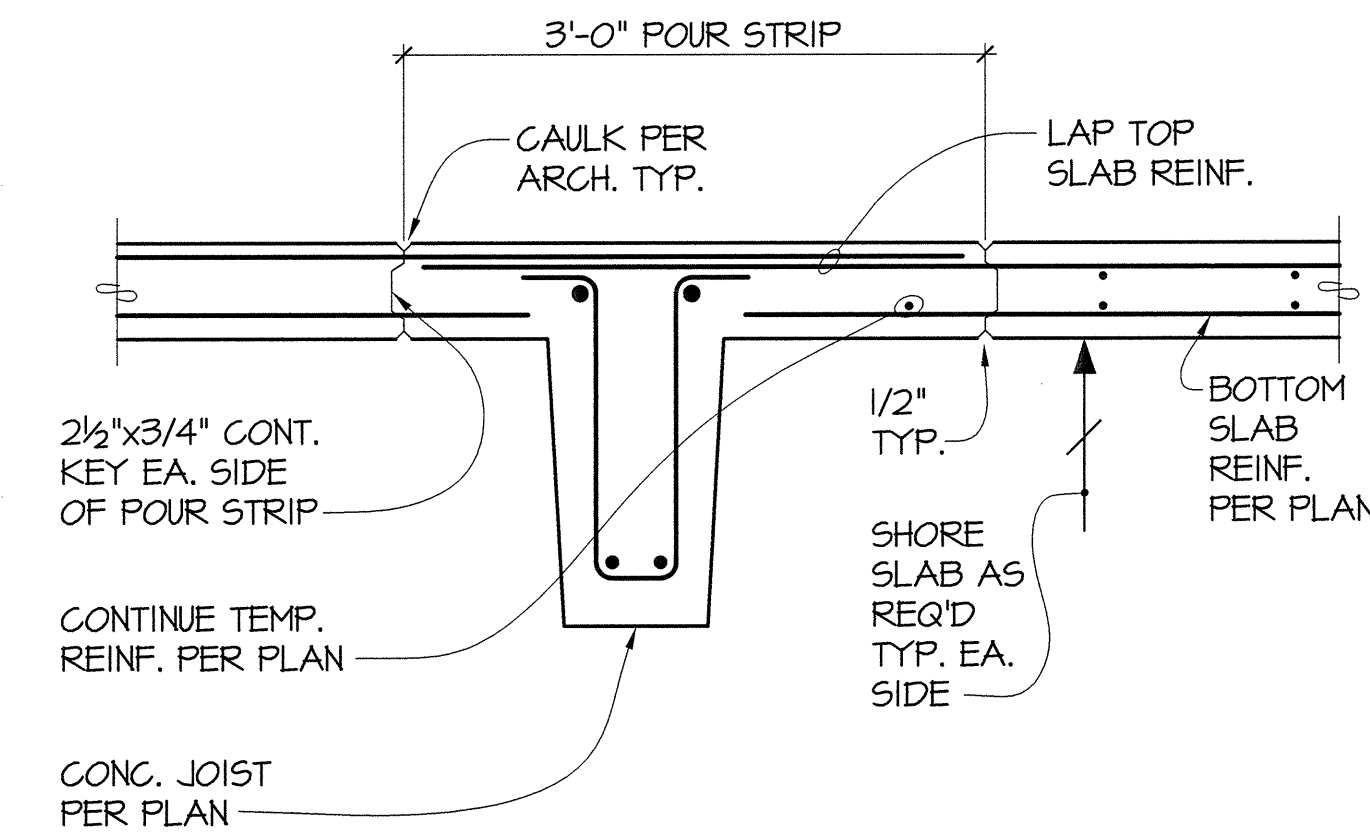
SLAB STRESSING END ANCHOR

7 SECTION
S4.13 NO SCALE



DETAIL

8 1/2"=1'-0"
S4.13



SECTION

9 1'-1'-0"
S4.13

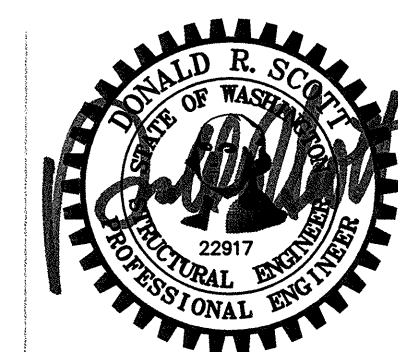


811 First Avenue, Suite 620
Seattle, Washington 98104
Tel: 206.362.0076

100 Pacific Avenue, Suite 1100
Tacoma, Washington 98402
Tel: 252.363.2797

GIFFIN • BOLTE • JURGENS
ARCHITECTS

815 S.W. SECOND AVENUE • PORTLAND, OREGON 97204
(503) 223-0992 www.gbjarch.com FAX (503) 294-3961



MultiCare

EMERGENCY DEPARTMENT & CANCER CENTER EXPANSION

TACOMA, WASHINGTON

Date 09-26-2008
Scale AS NOTED
Drawn By MCS
Job No. 4034

TYPICAL ONE WAY
POST TENSION
DETAILS

S4
13