

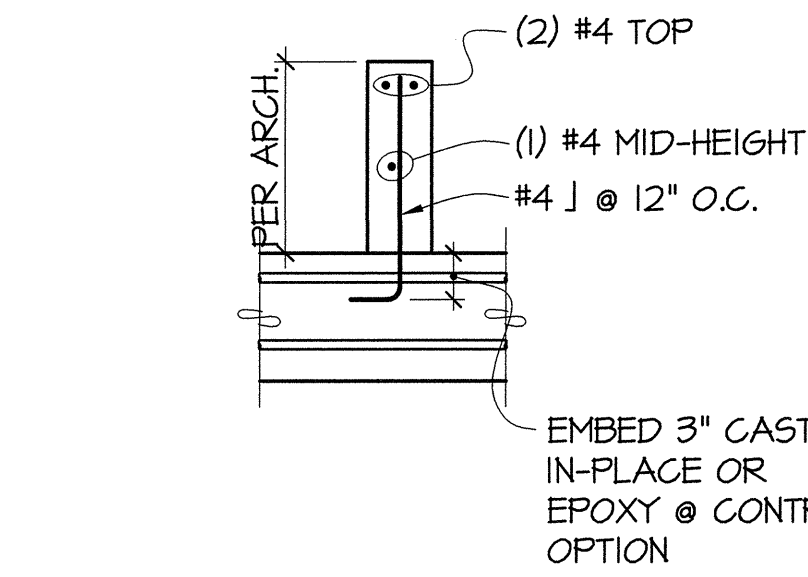
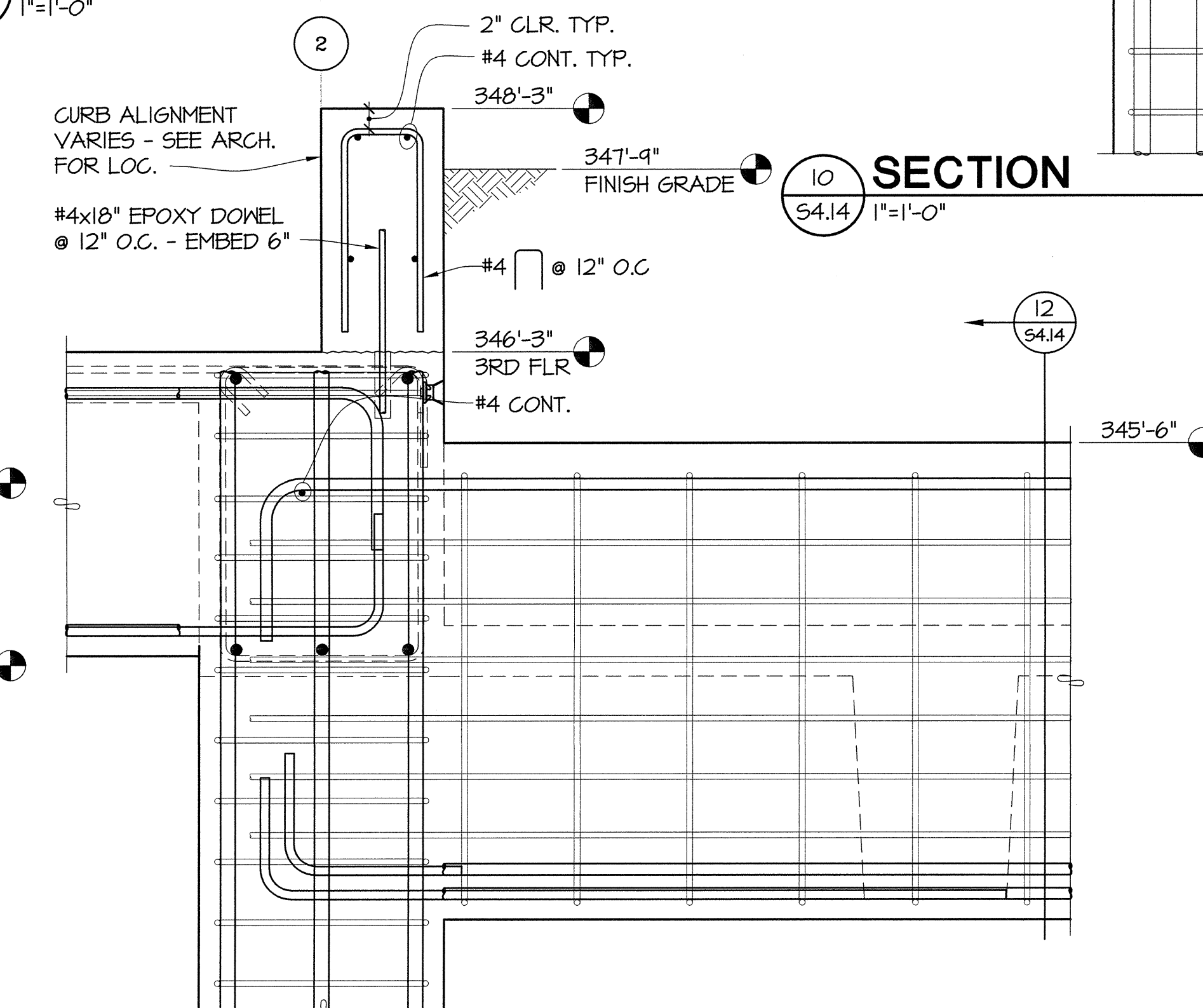
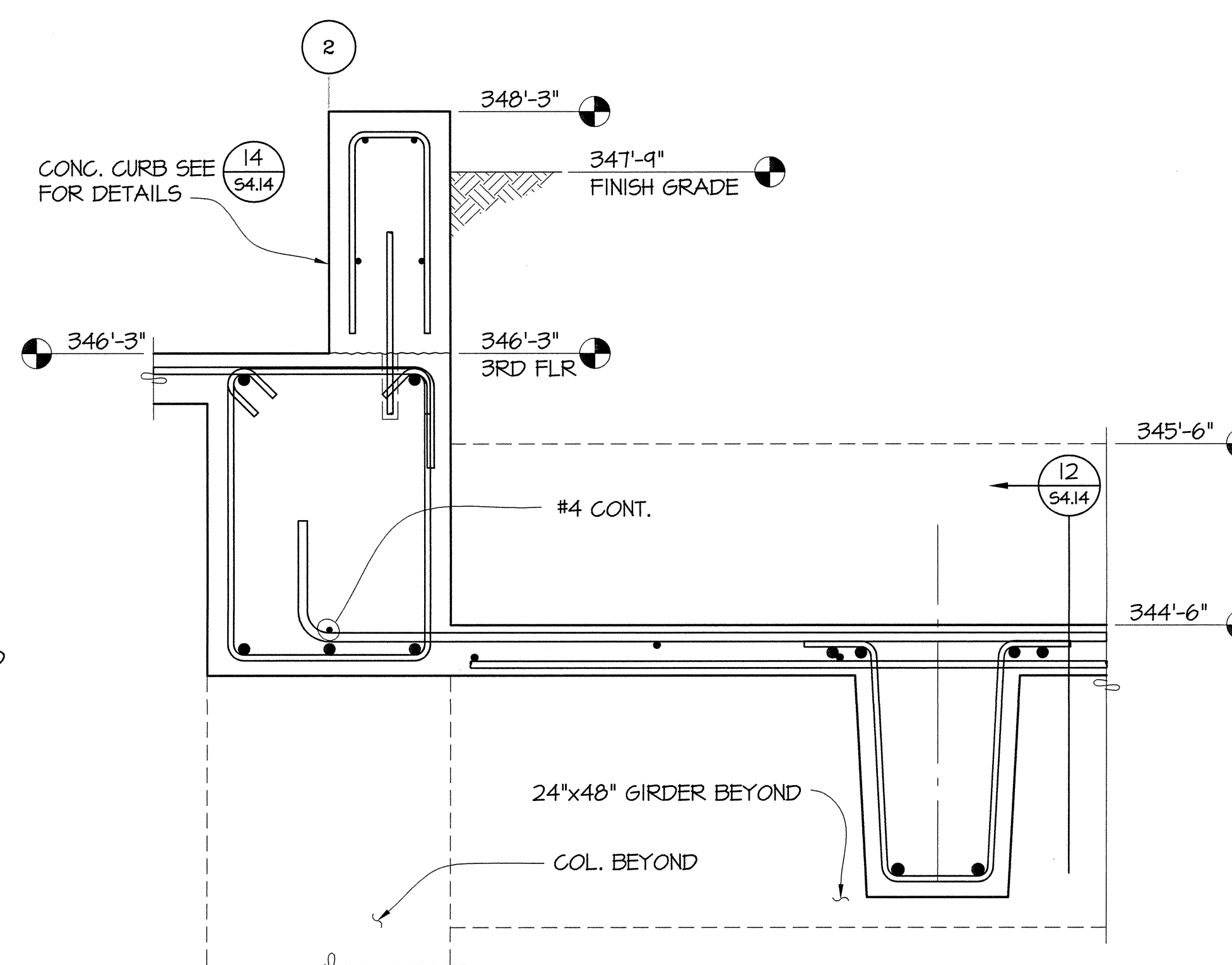
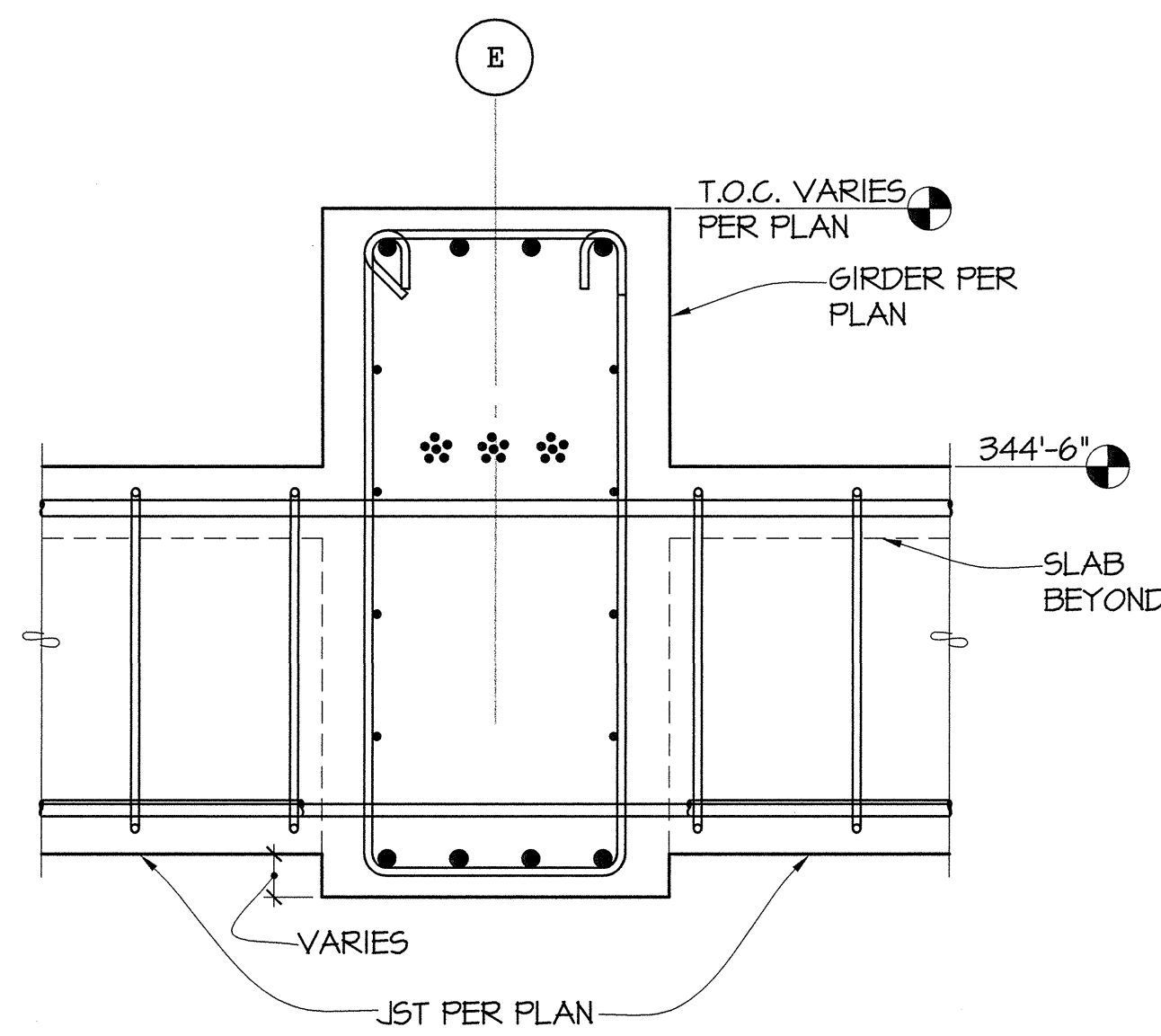
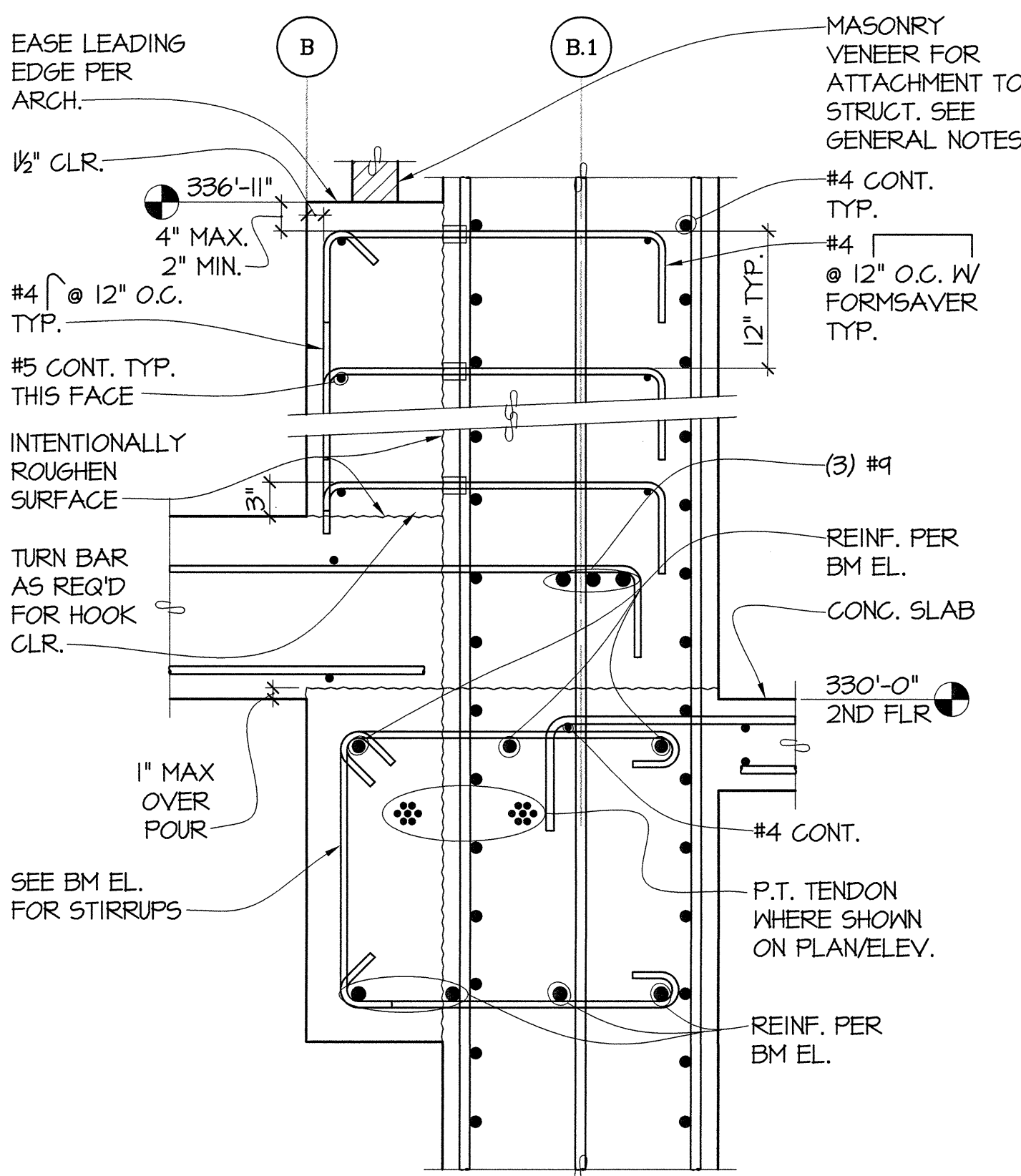
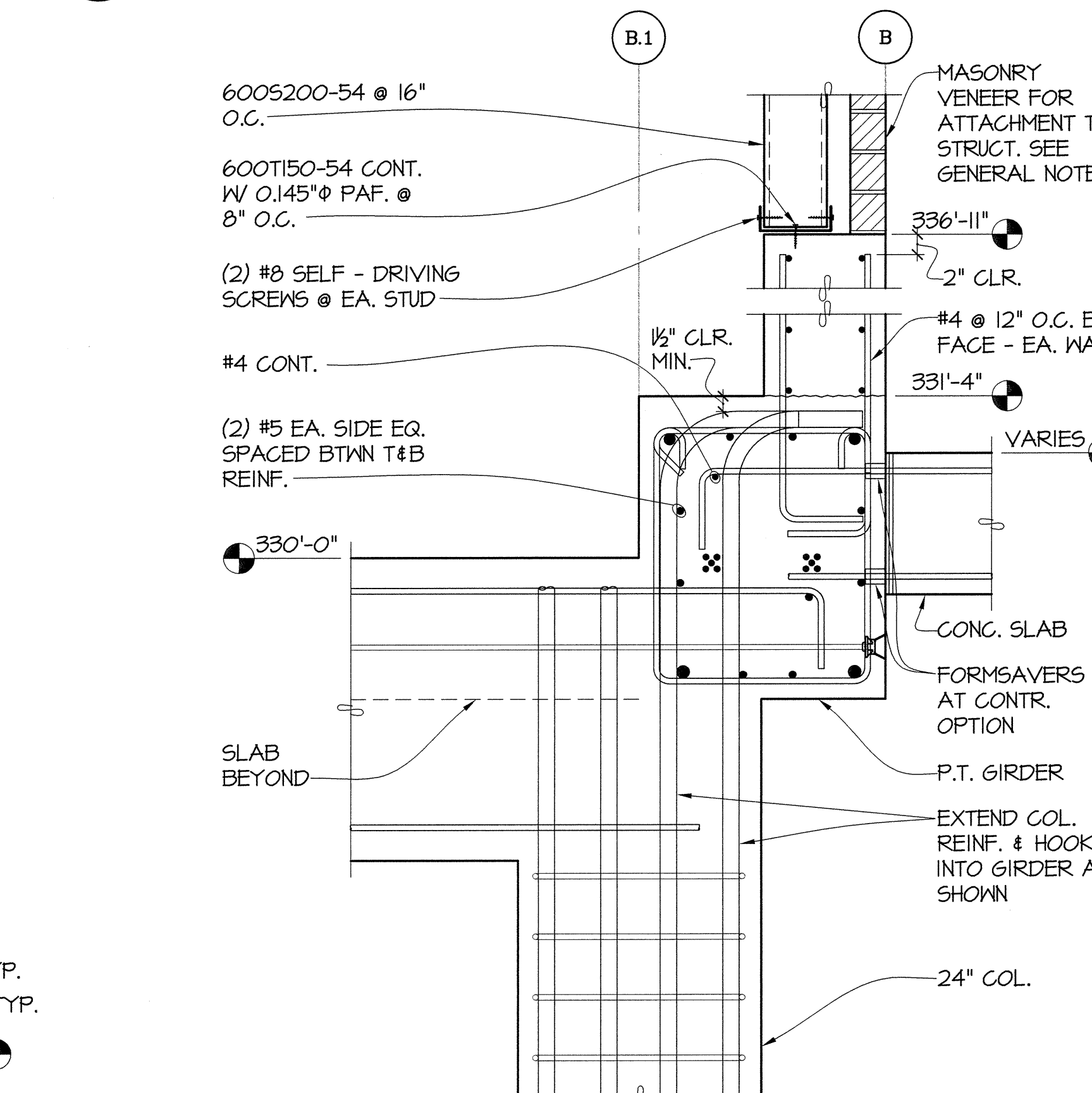
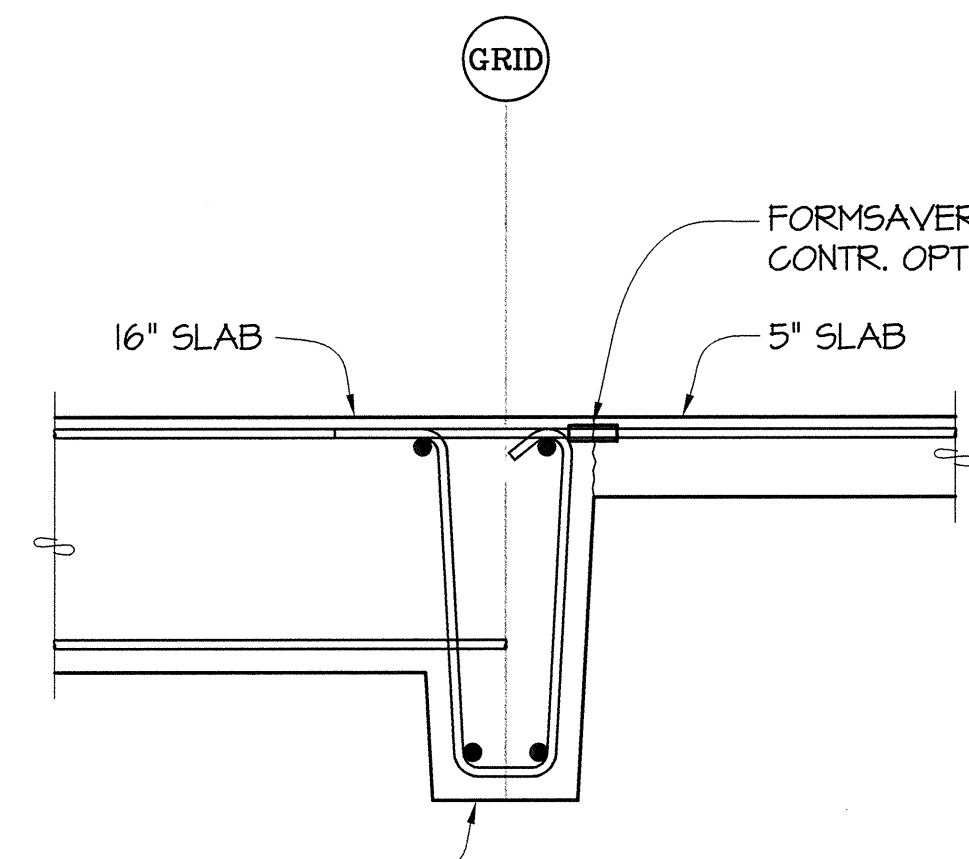
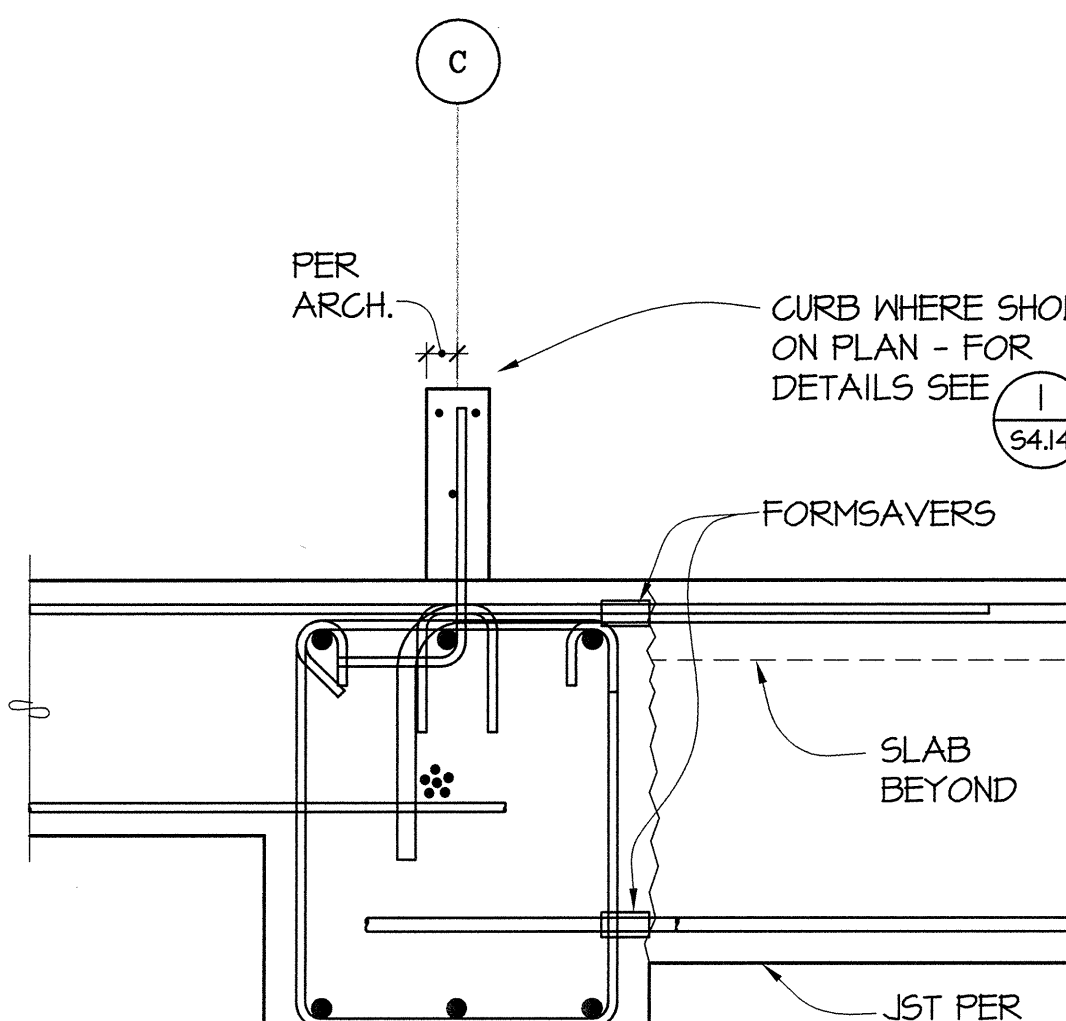
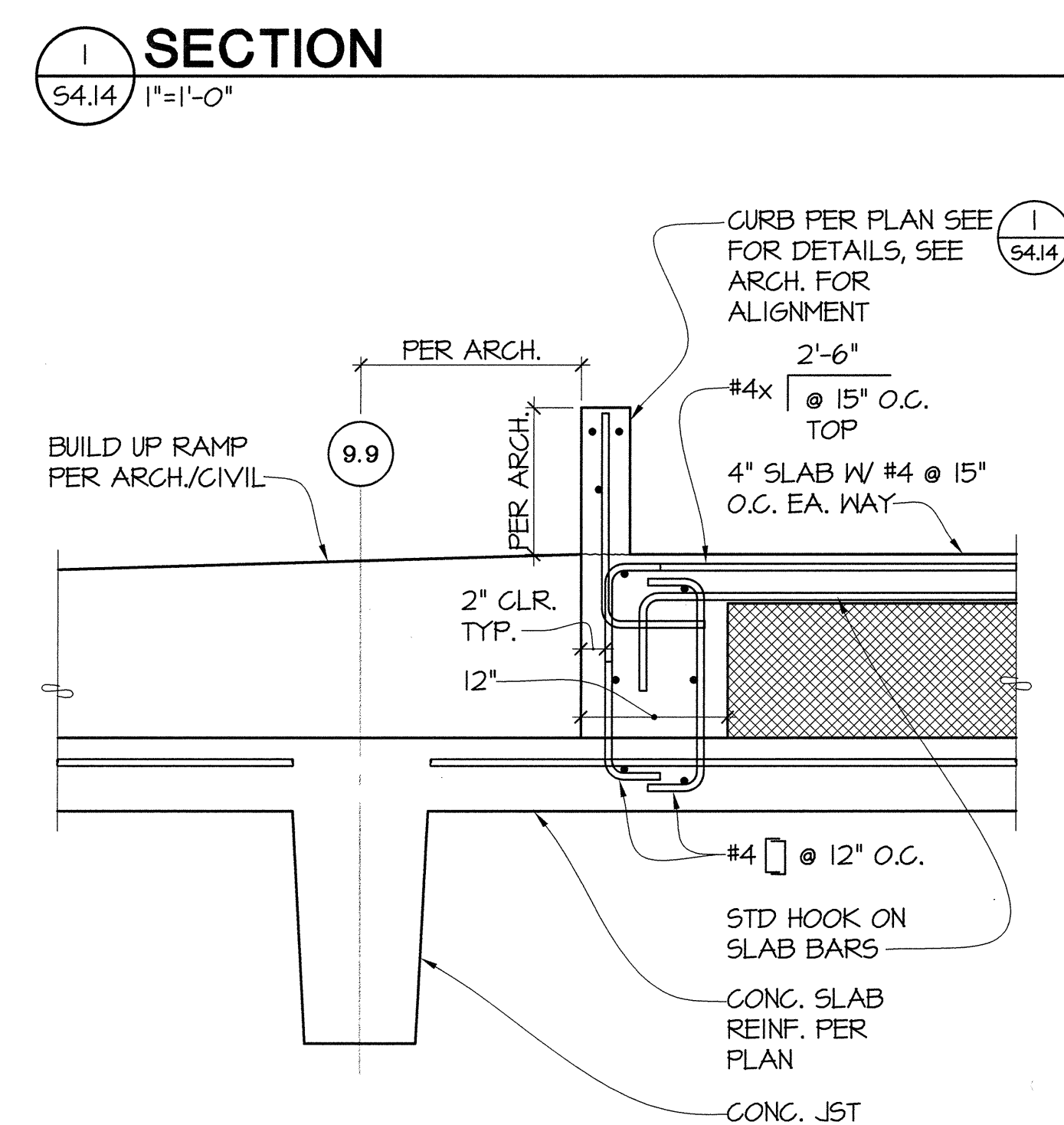
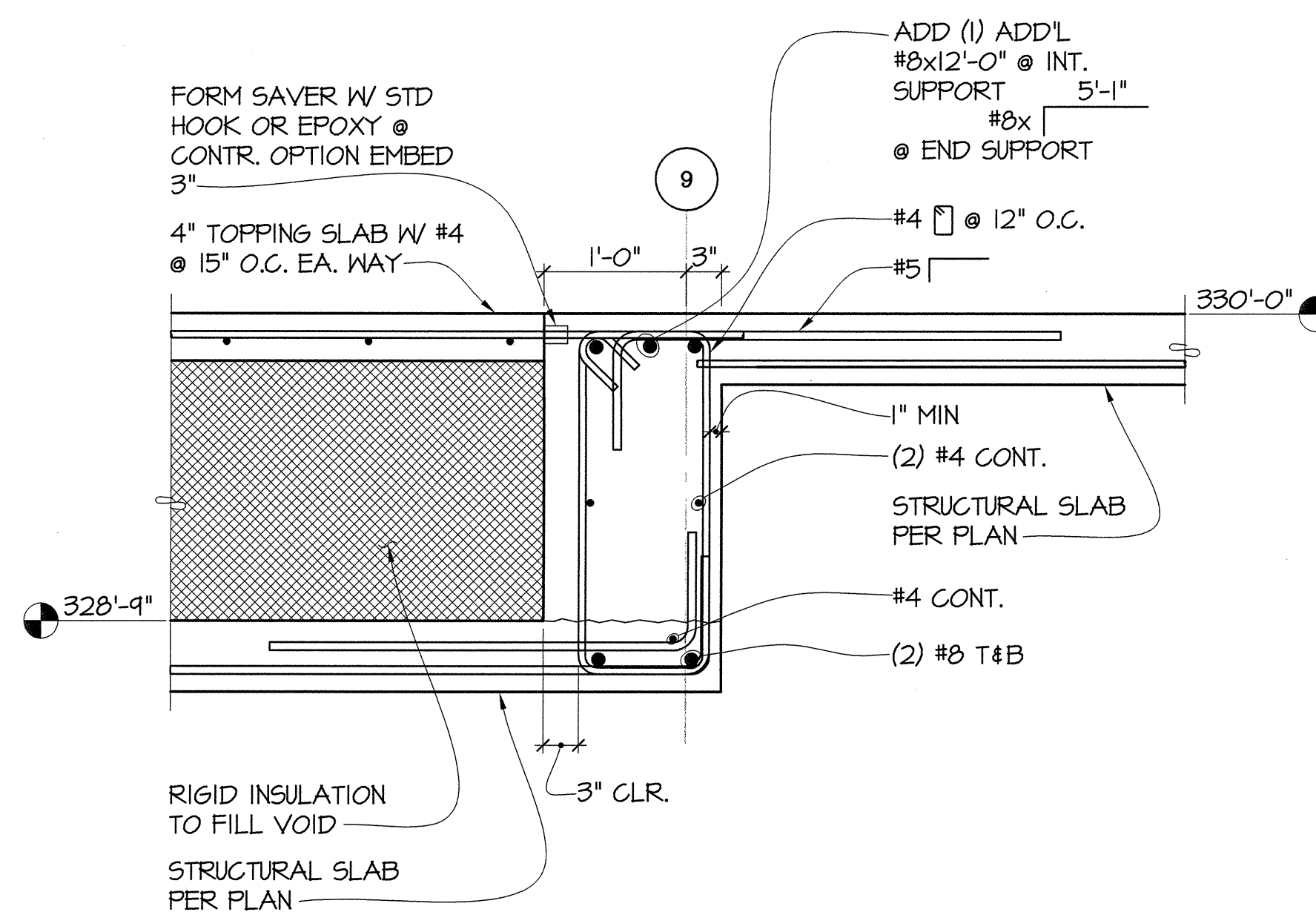
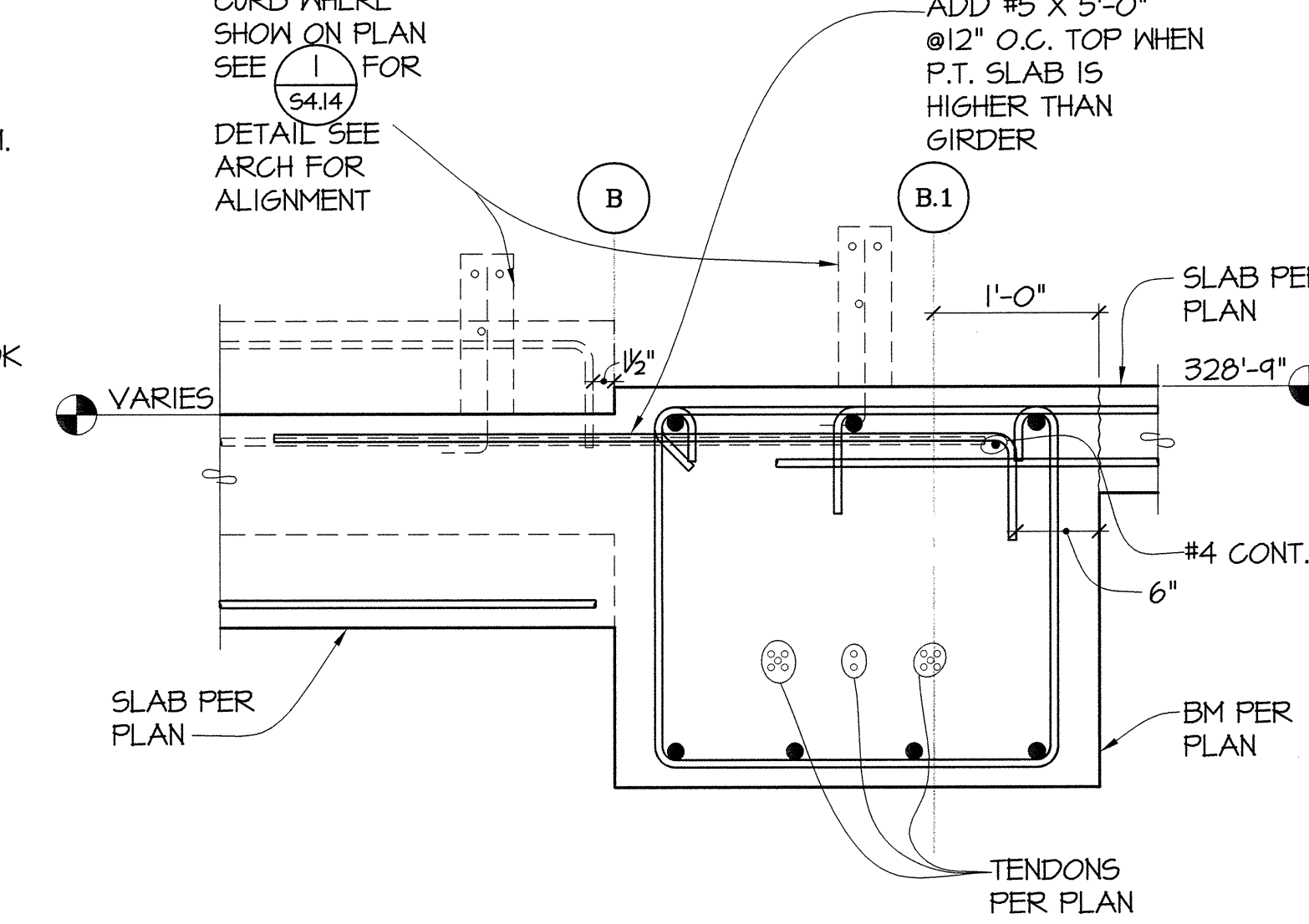
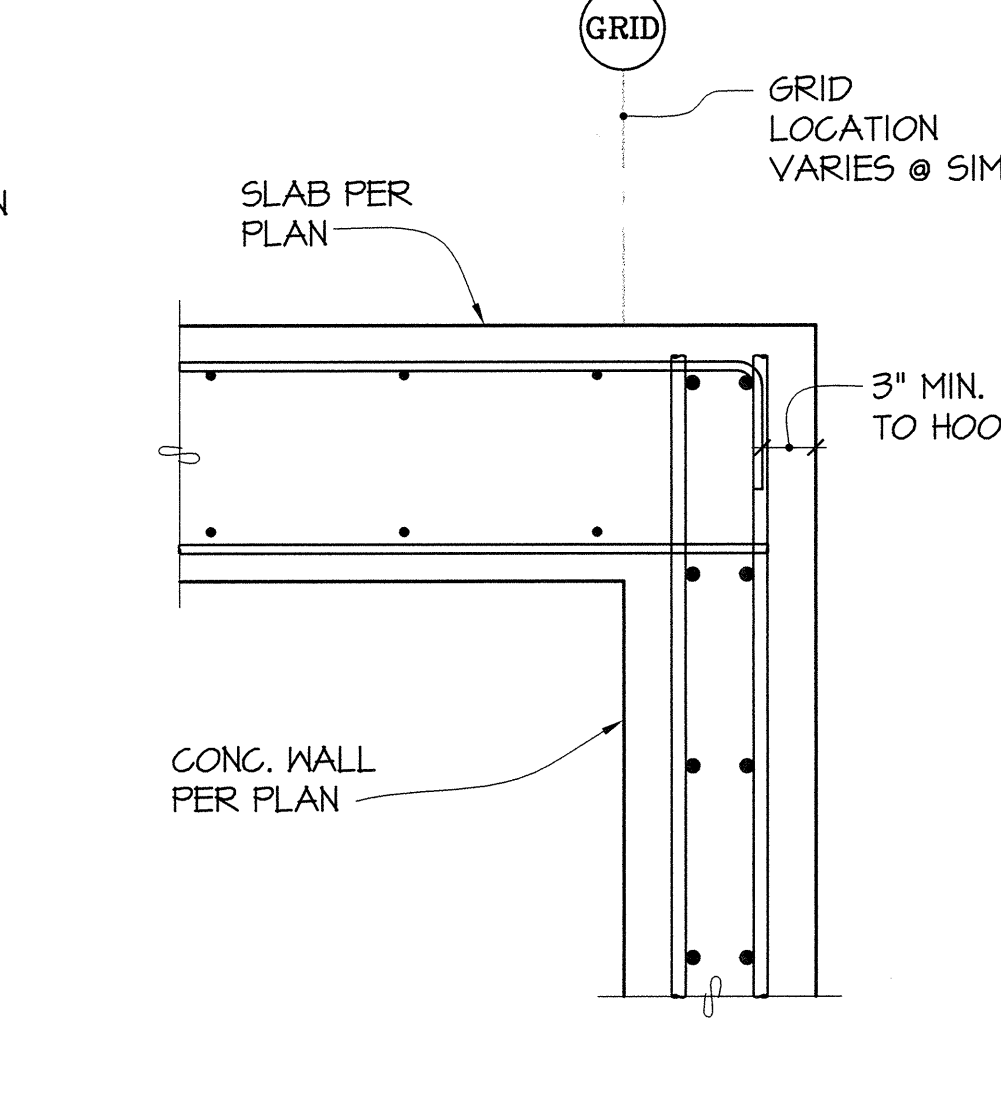
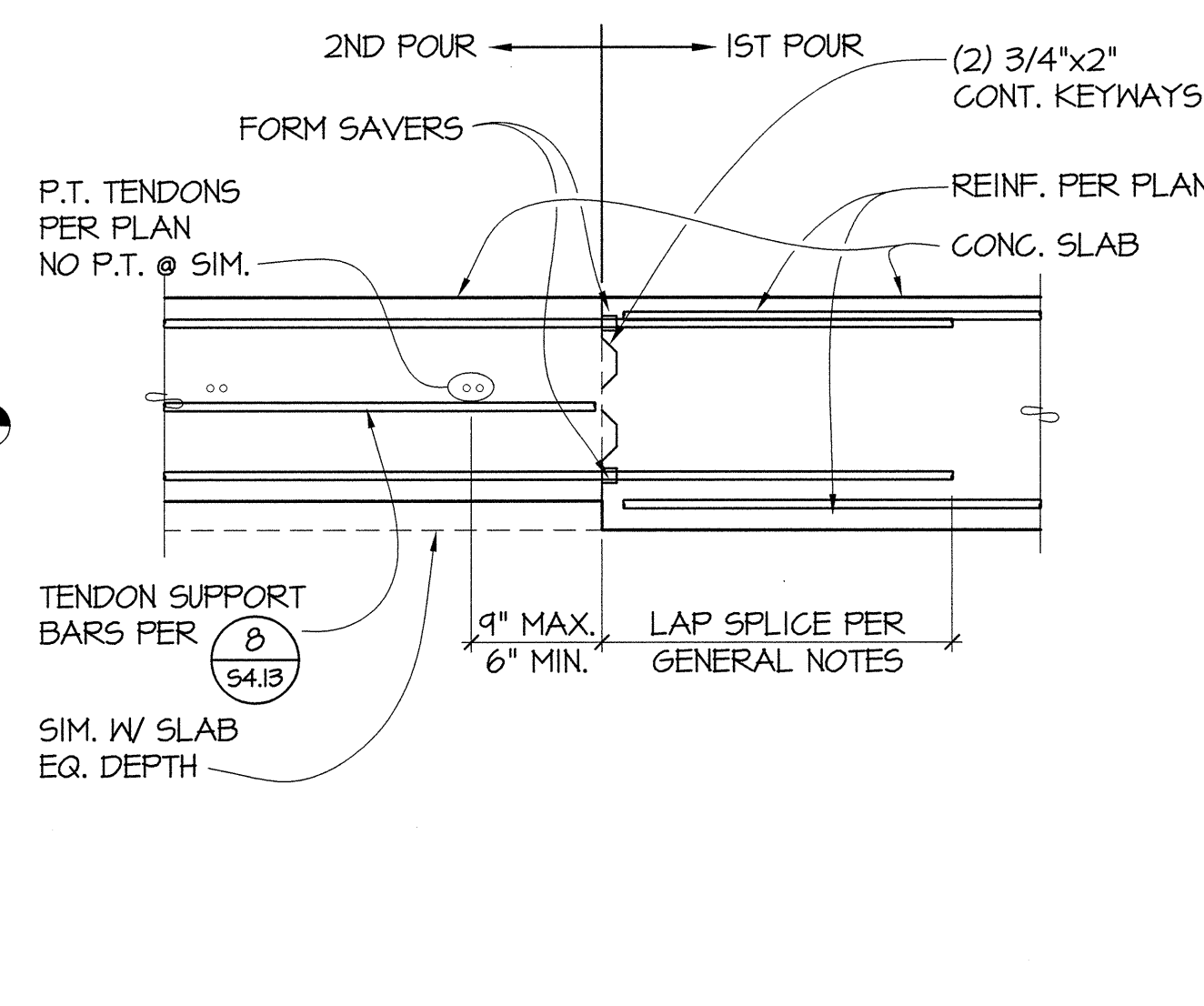
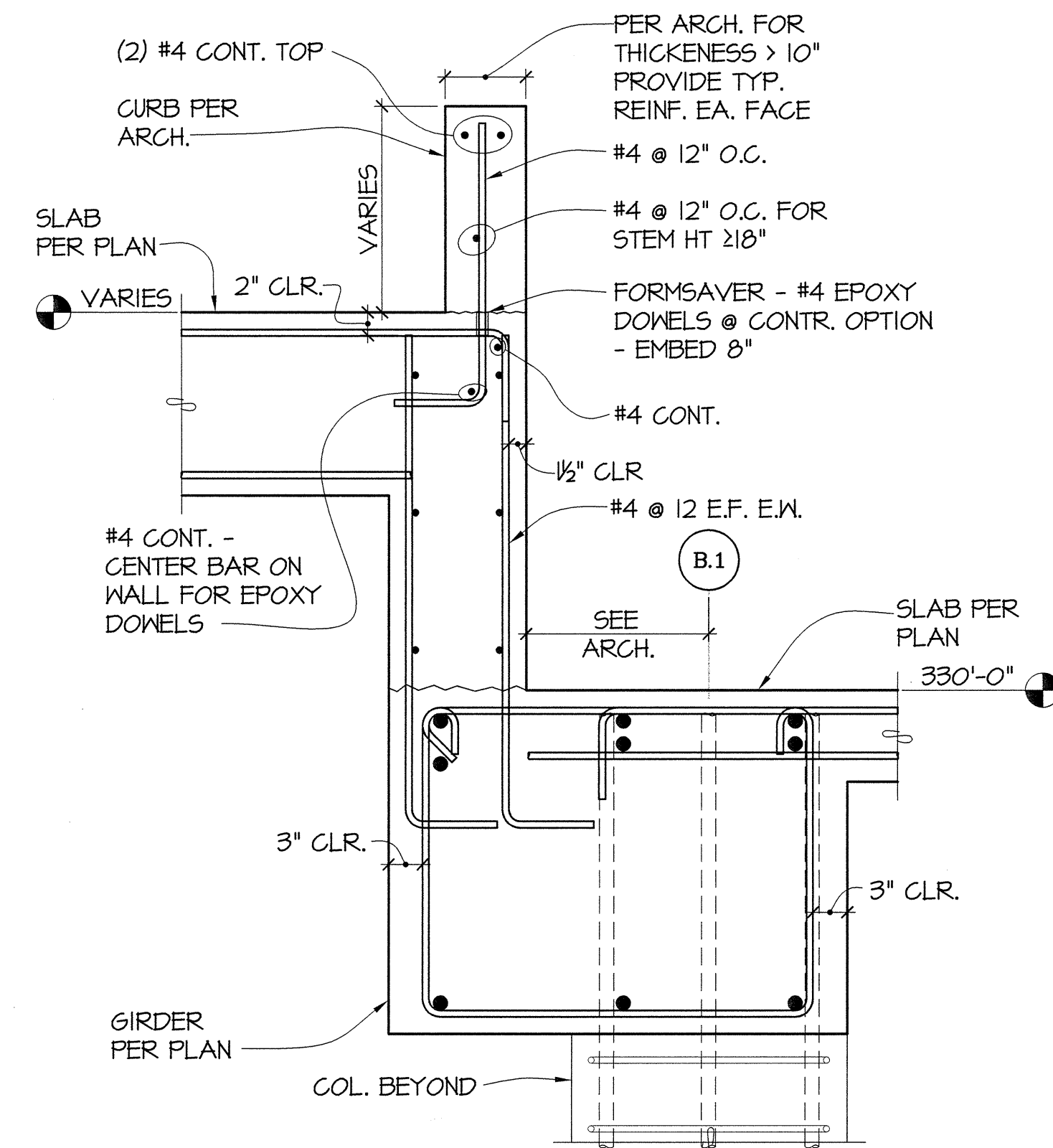
A

B

C

D

E



811 First Avenue, Suite 620  
Seattle, Washington 98104  
Tel: 206.363.5078

950 Pacific Avenue, Suite 1100  
Tacoma, Washington 98402  
Tel: 253.363.5797

GIFFIN • BOLTE • JURGENS  
ARCHITECTS

815 S.W. SECOND AVENUE, PORTLAND, OREGON 97204  
(503) 223-0992 www.gbjarch.com FAX (503) 294-3981



MultiCare

EMERGENCY DEPARTMENT & CANCER CENTER EXPANSION

TACOMA, WASHINGTON

REVISION 07-21-08

Date 09-26-2008  
Scale AS NOTED  
Drawn By MCS  
Job No. 4034

POST TENSION  
DETAILS

S4  
14