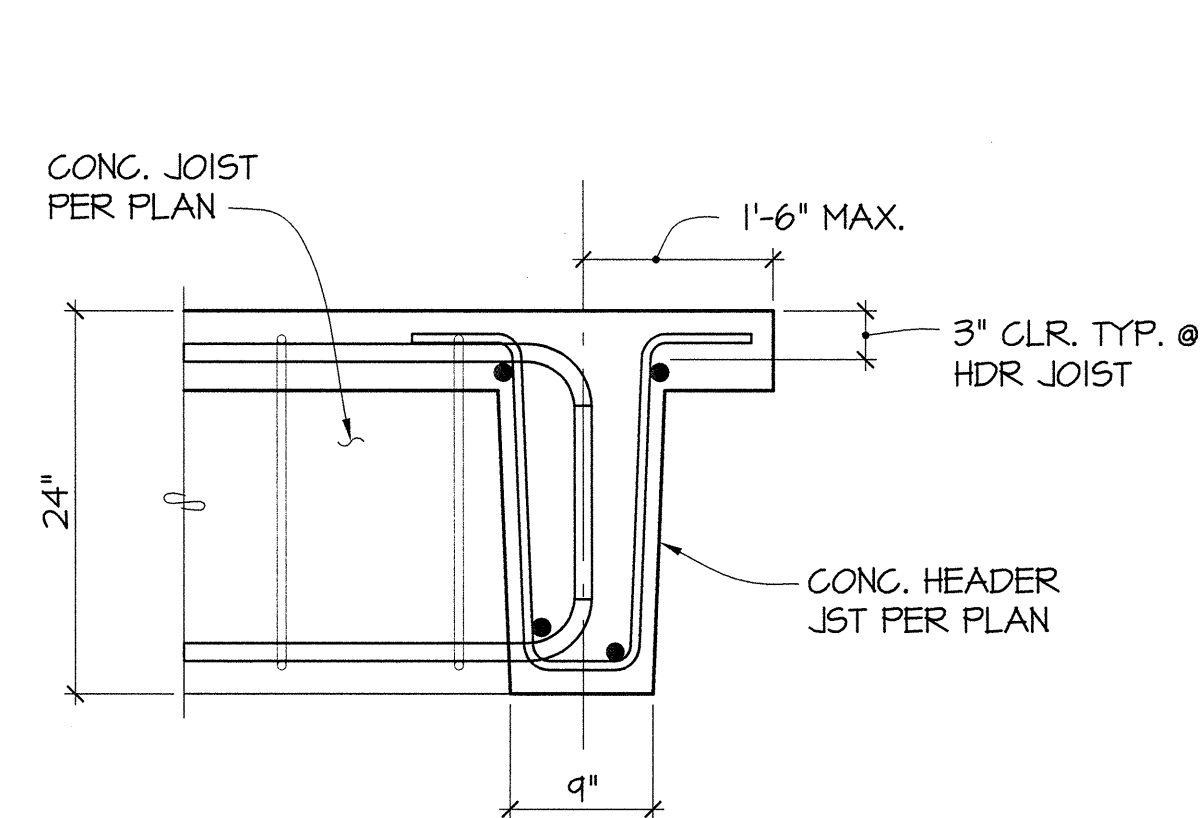


GIRDER/JOIST AT CONCRETE

1 DETAIL

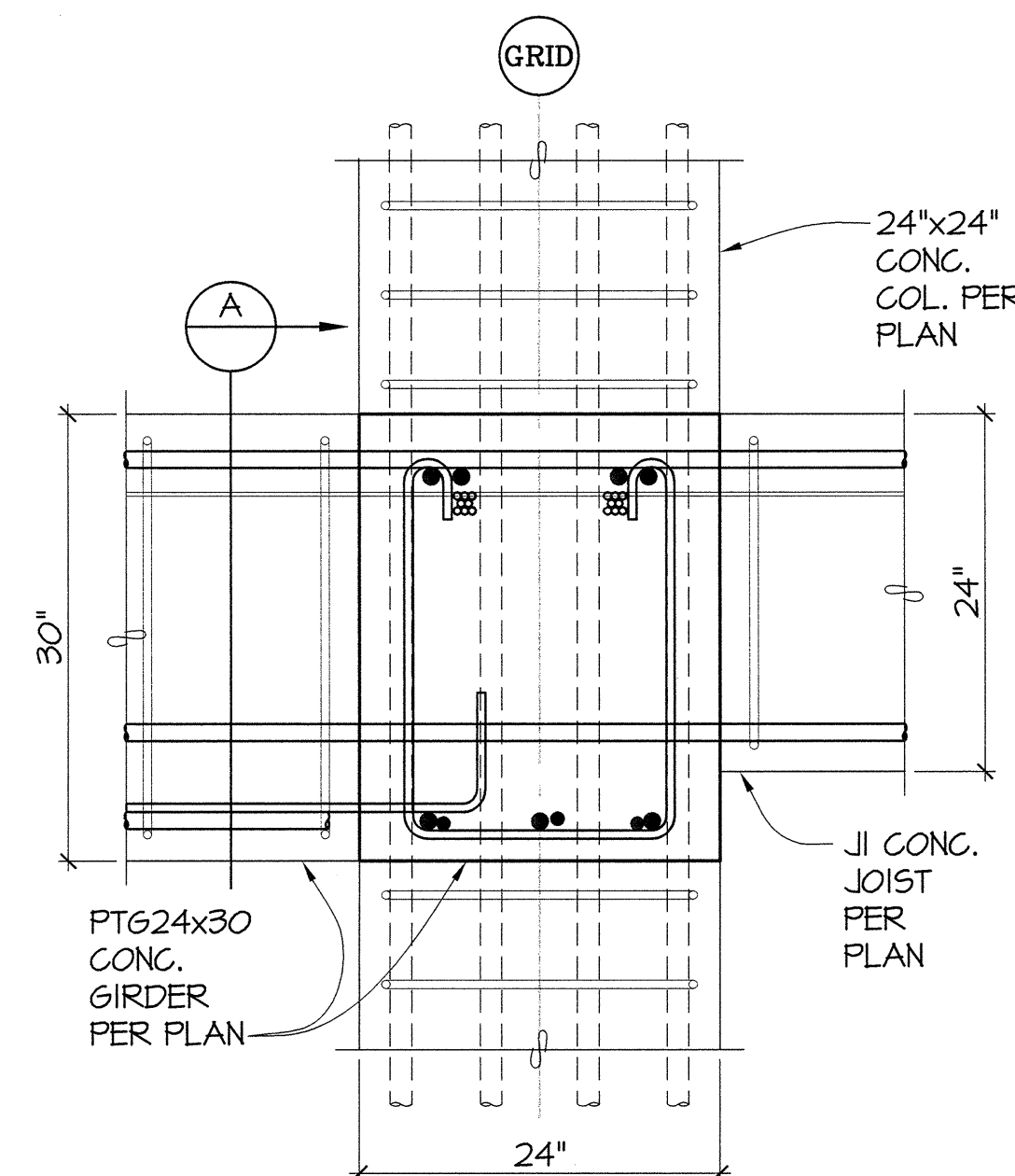
S4.15 / 1"=1'-0"



TYPICAL HEADER JOIST

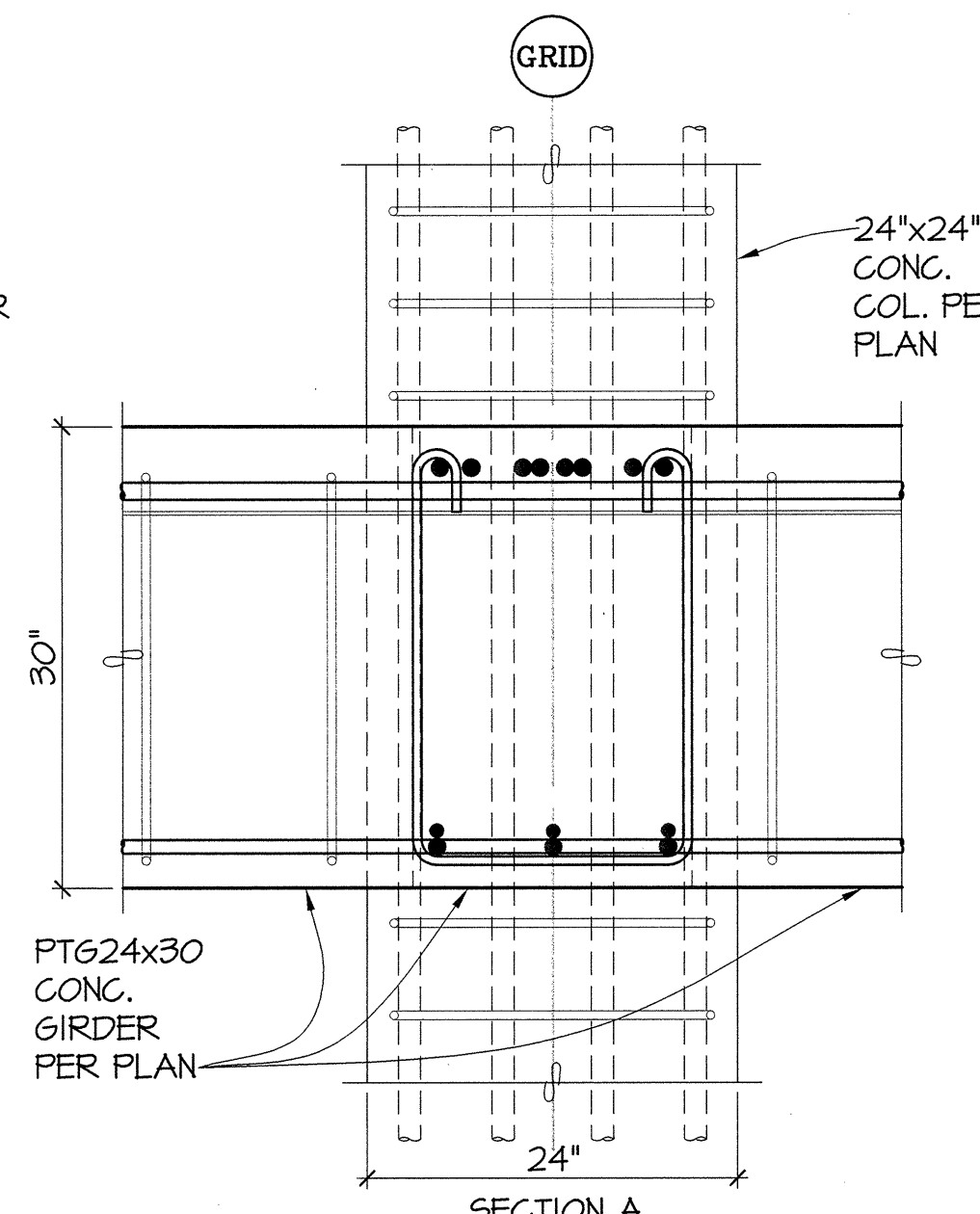
2 SECTION

S4.15 / 1"=1'-0"

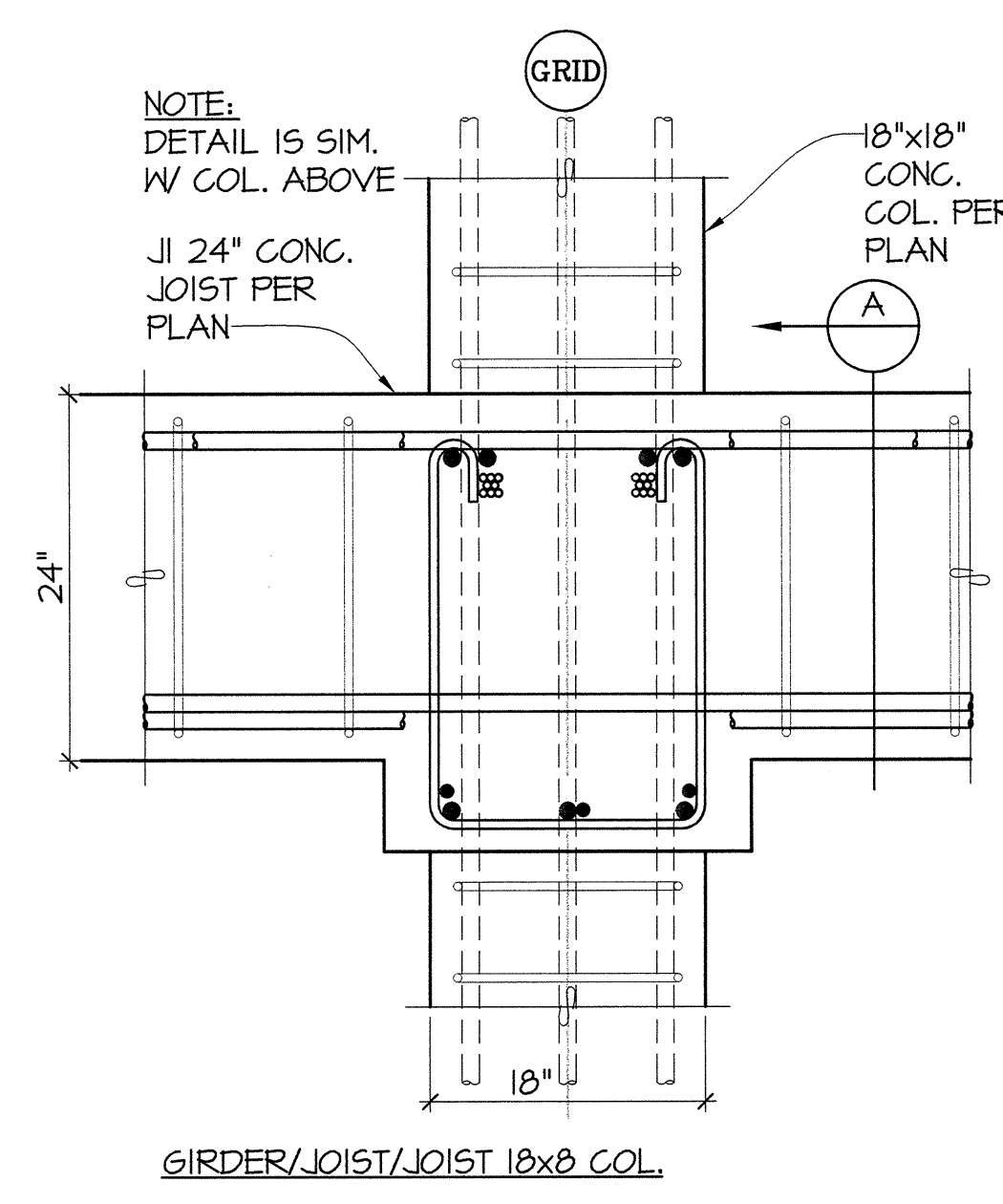


3 DETAIL

S4.15 / 1"=1'-0"



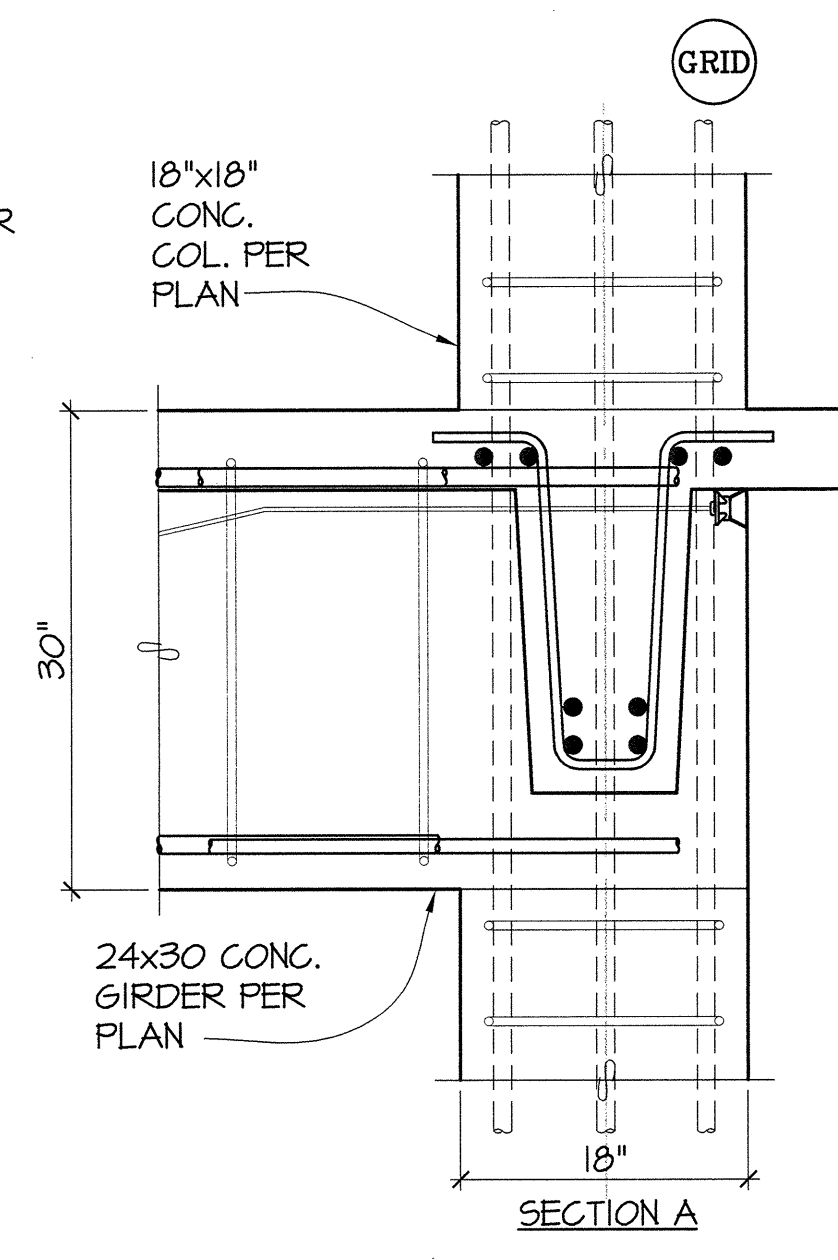
SECTION A



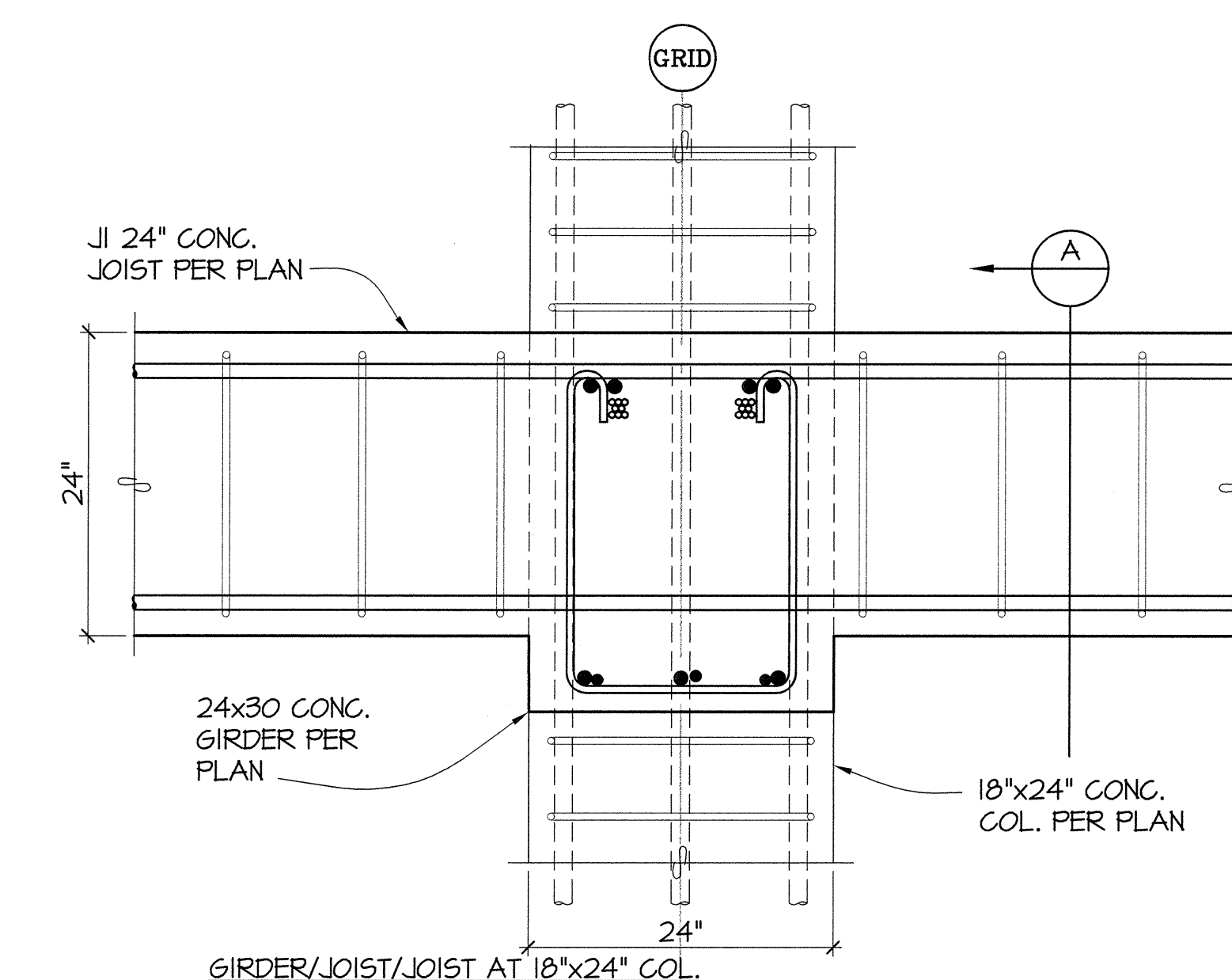
GIRDER/JOIST/JOIST 18x24 COL.

4 DETAIL

S4.15 / 1"=1'-0"



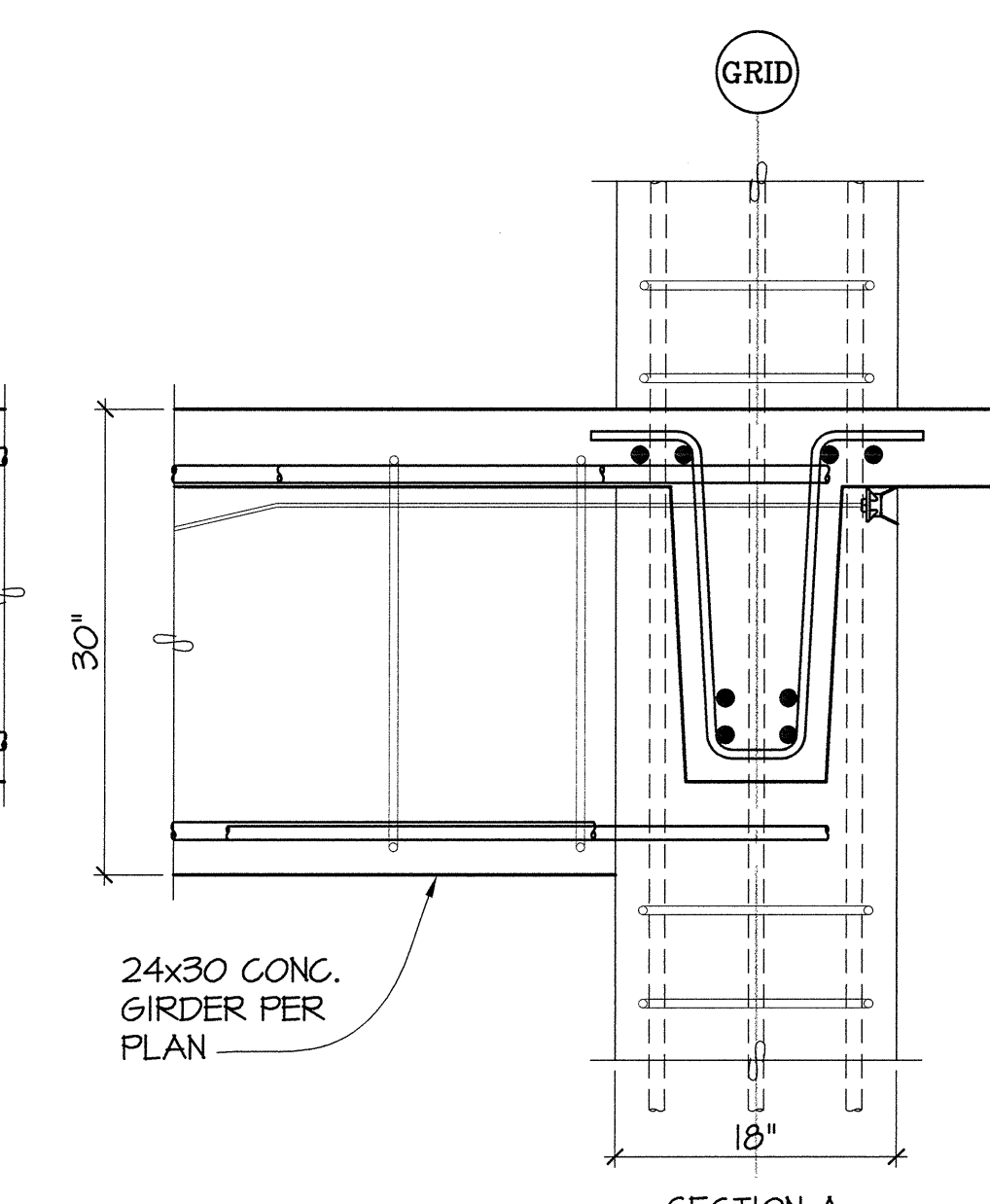
SECTION A



GIRDER/JOIST/JOIST AT 18x24 COL.

5 DETAIL

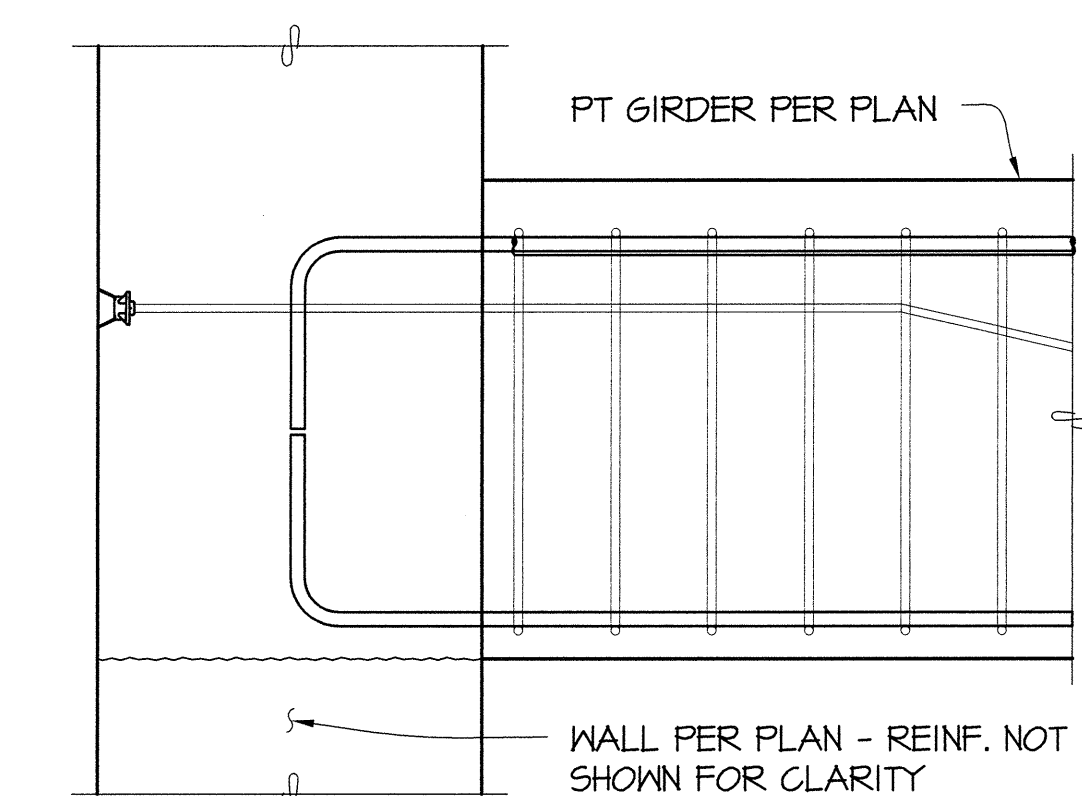
S4.15 / 1"=1'-0"



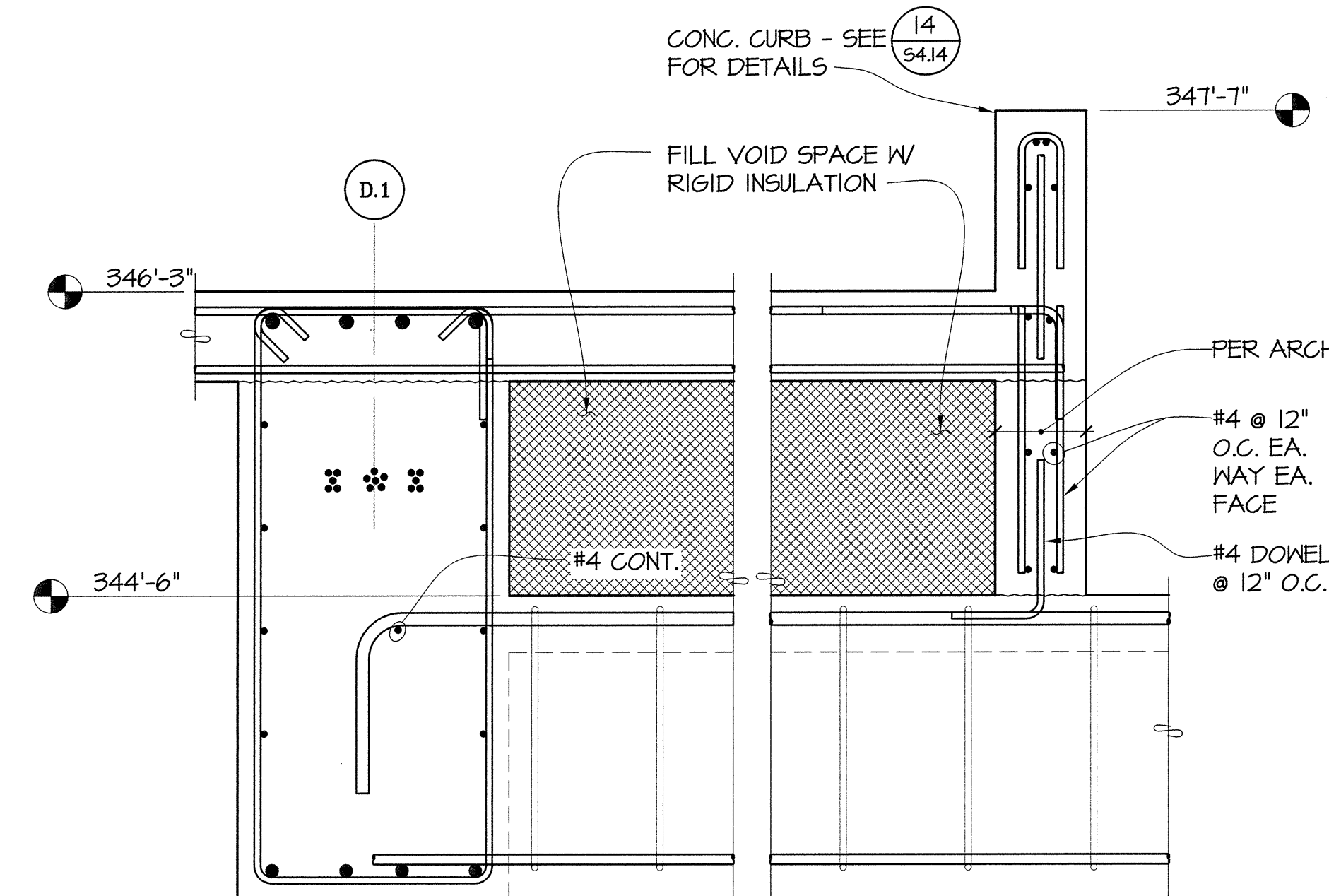
SECTION A

6 SECTION

S4.15 / 1"=1'-0"

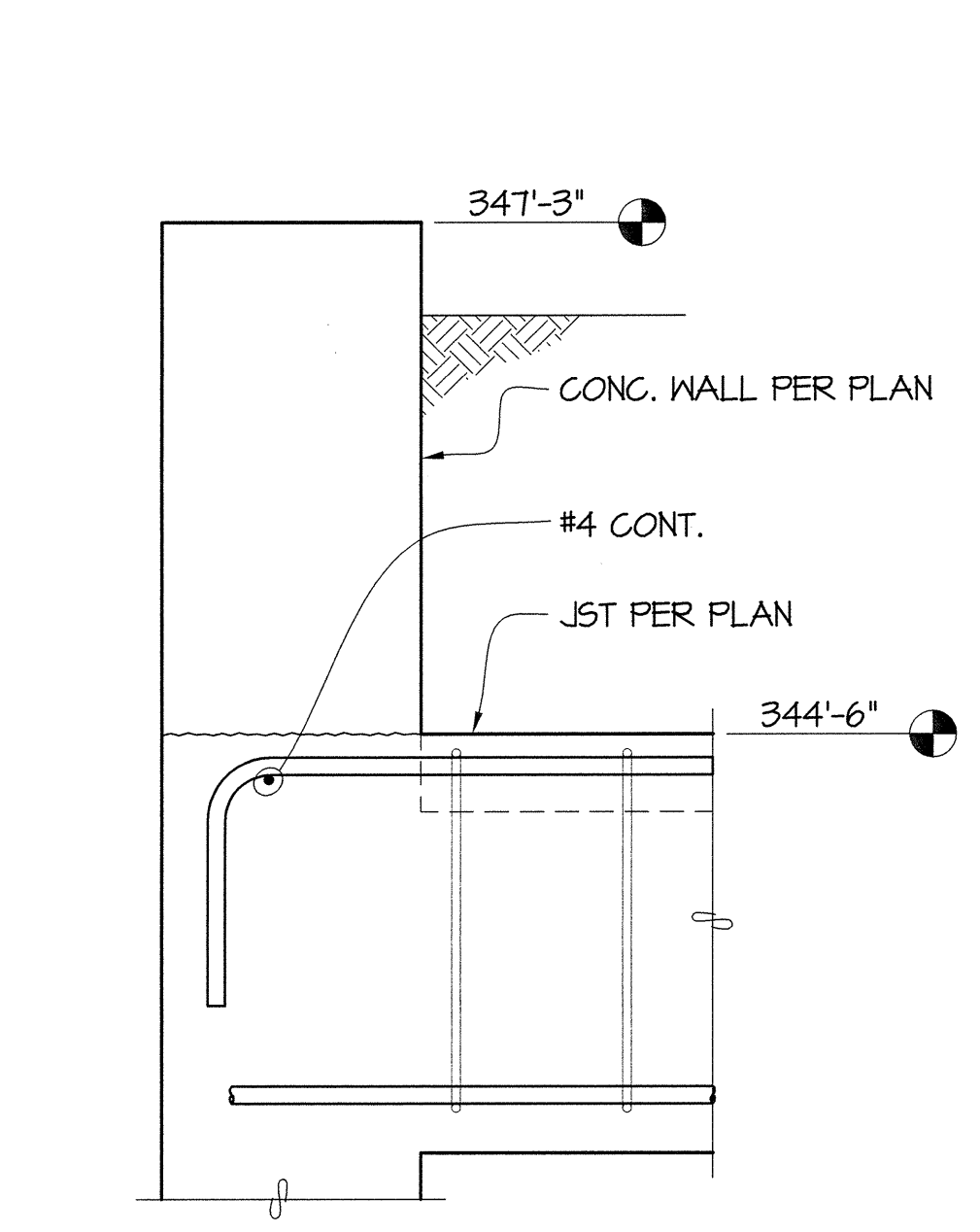


WALL PER PLAN - REINF. NOT SHOWN FOR CLARITY



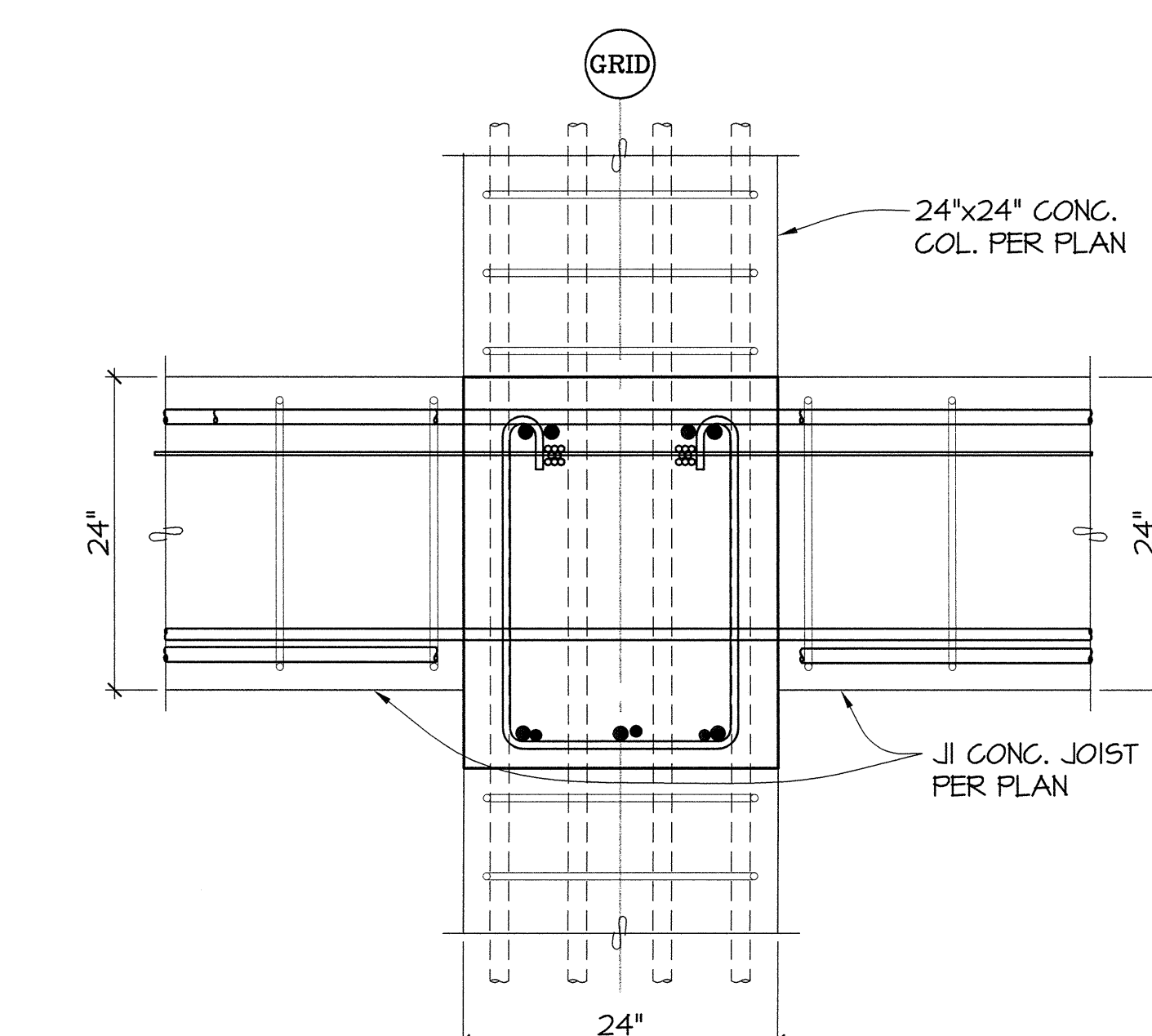
7 SECTION

S4.15 / 1"=1'-0"



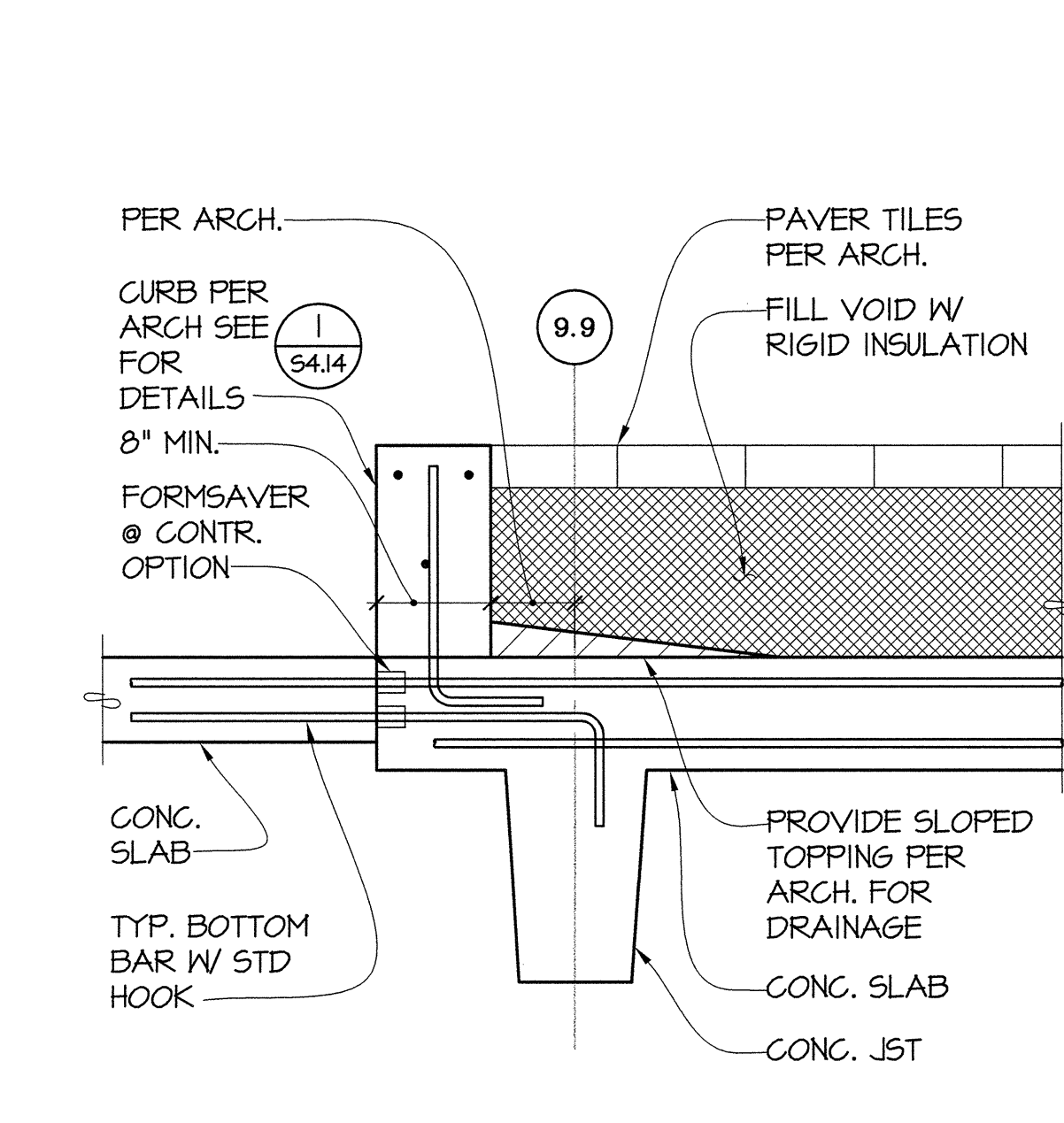
8 SECTION

S4.15 / 1"=1'-0"



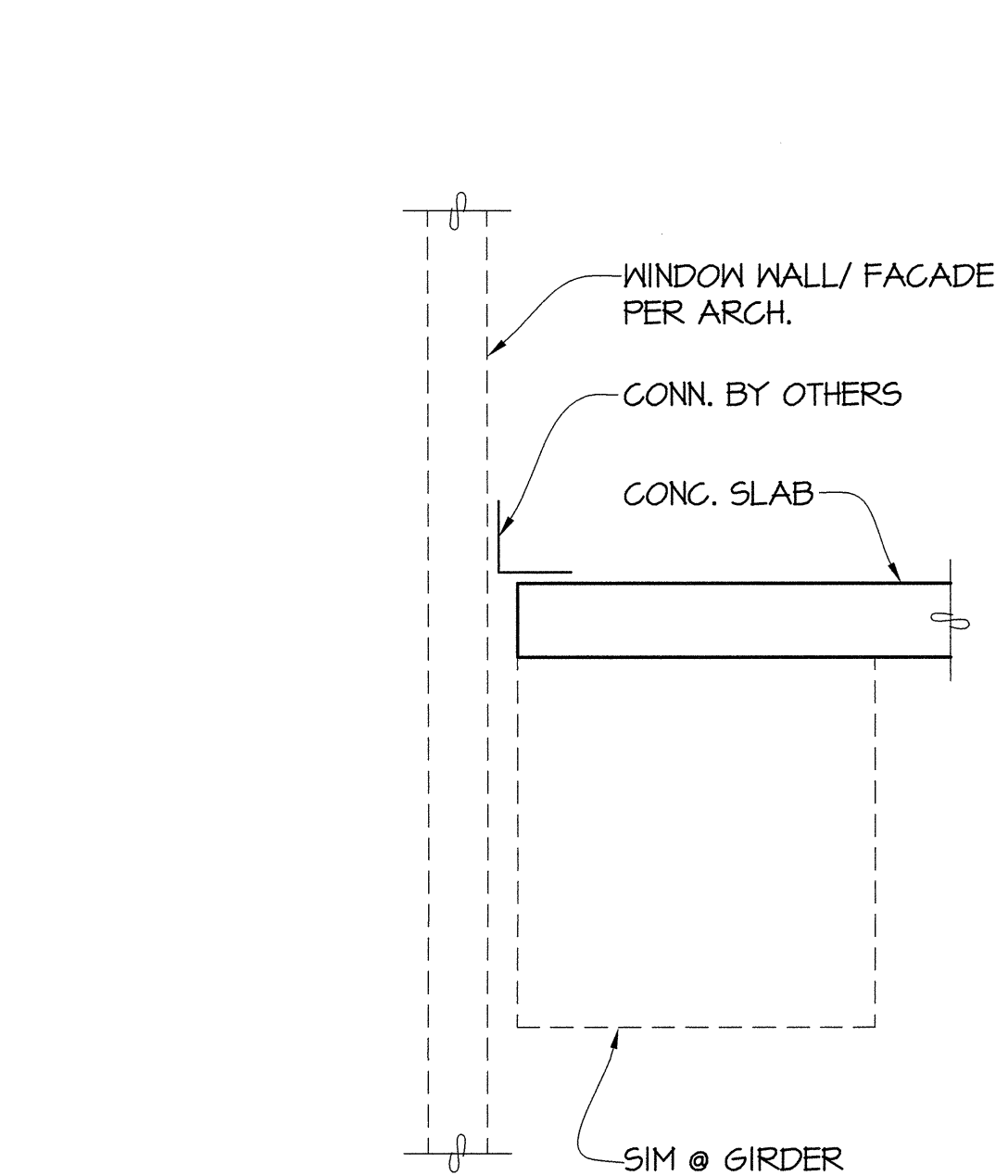
9 SECTION

S4.15 / 1"=1'-0"



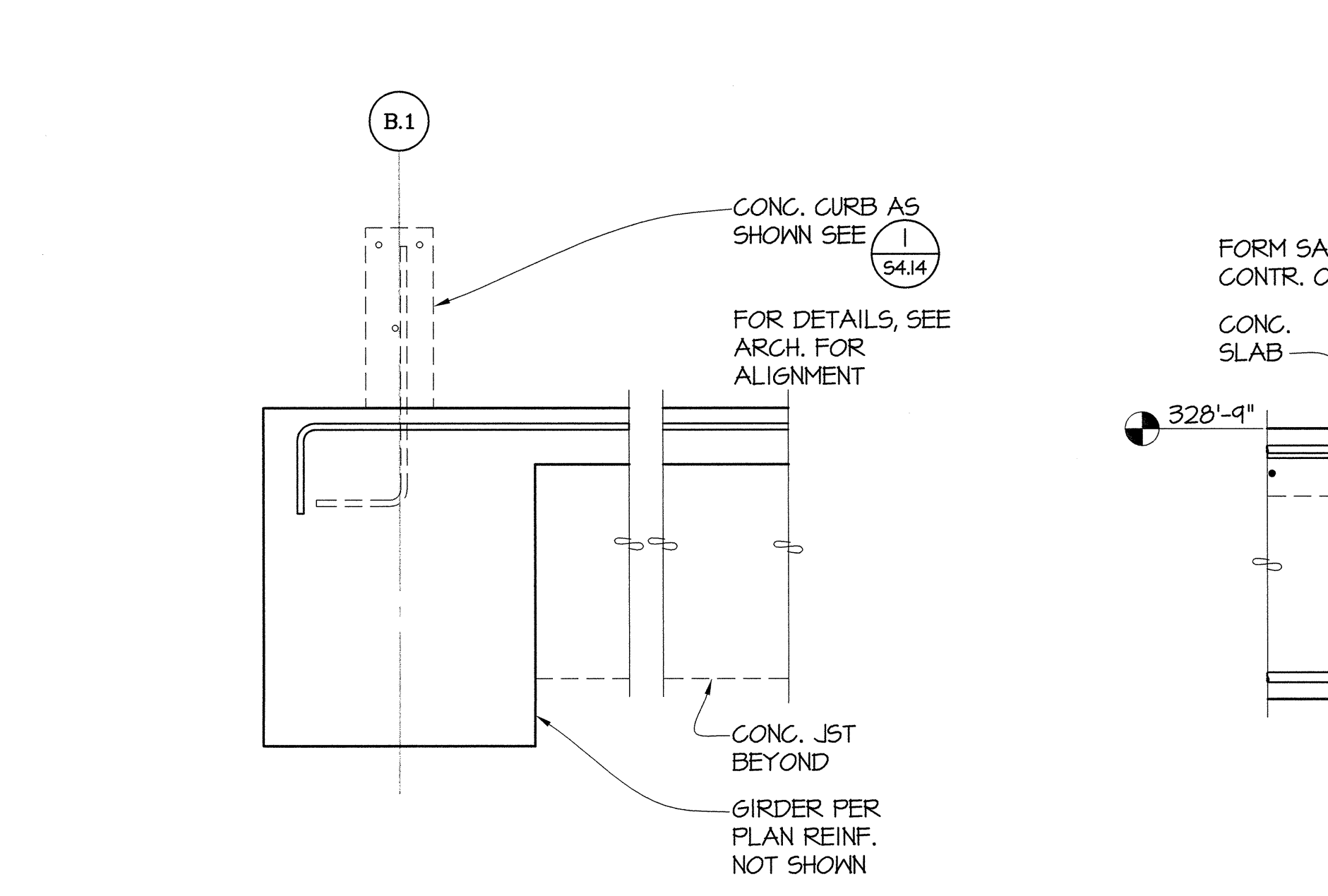
10 SECTION

S4.15 / 1"=1'-0"



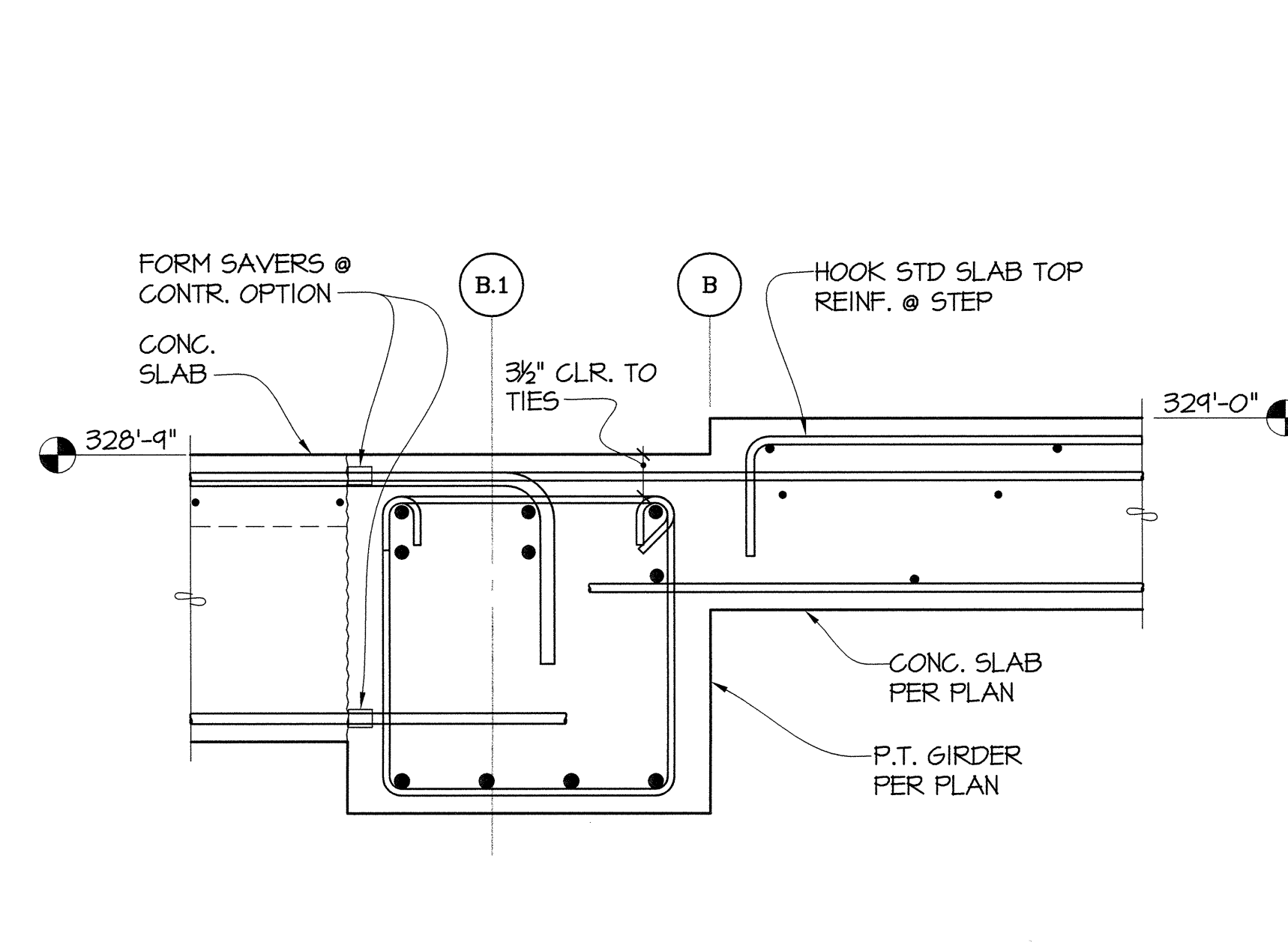
11 SECTION

S4.15 / 1"=1'-0"



12 SECTION

S4.15 / 1"=1'-0"



13 SECTION

S4.15 / 1"=1'-0"



811 First Avenue, Suite 620
Seattle, Washington 98104
Tel: 206.363.2078

950 Pacific Avenue, Suite 1100
Tacoma, Washington 98402
Tel: 252.363.2797

GIFFIN • BOLTE • JURGENS
ARCHITECTS

815 S.W. SECOND AVENUE • PORTLAND, OREGON 97204
(503) 223-0992 www.gbjarch.com FAX (503) 294-1961



MultiCare

EMERGENCY DEPARTMENT & CANCER CENTER EXPANSION

TACOMA, WASHINGTON

REVISION 07-21-08

Date 09-26-2008
Scale AS NOTED
Drawn By rdw
Job No. 4034

CONCRETE BEAM
DETAILS

S4
15