

A

B

C

D

E

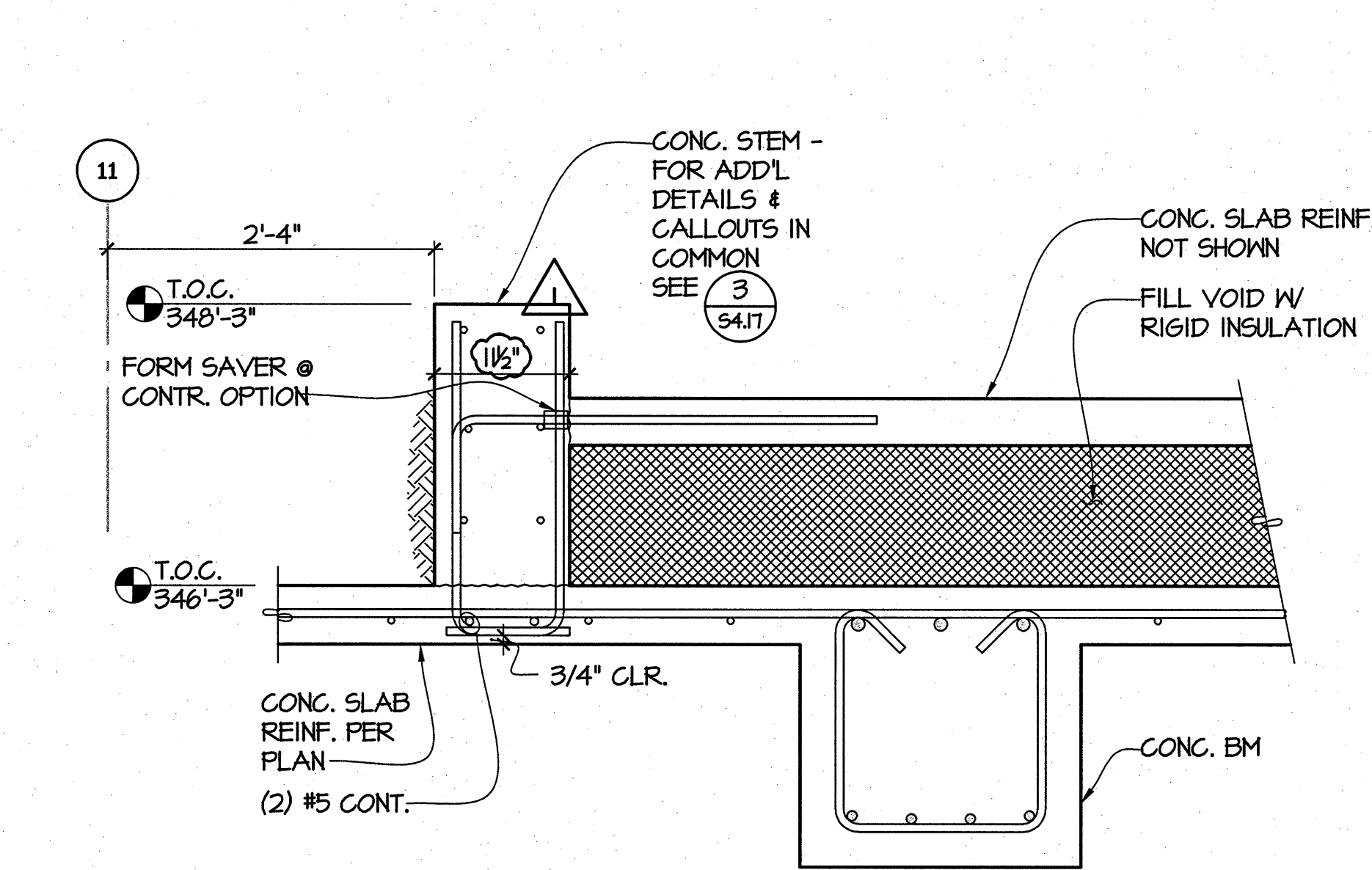
A

B

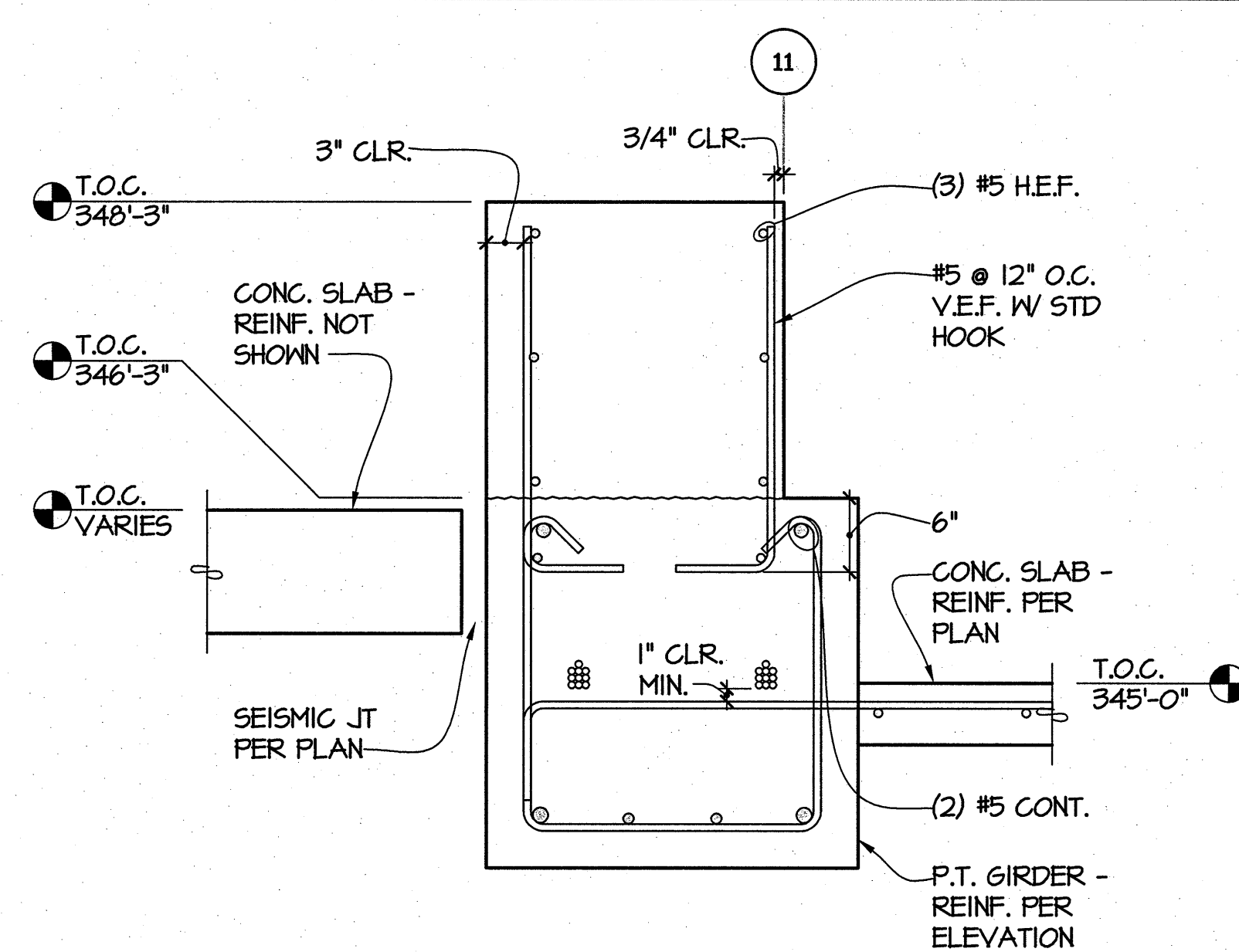
C

D

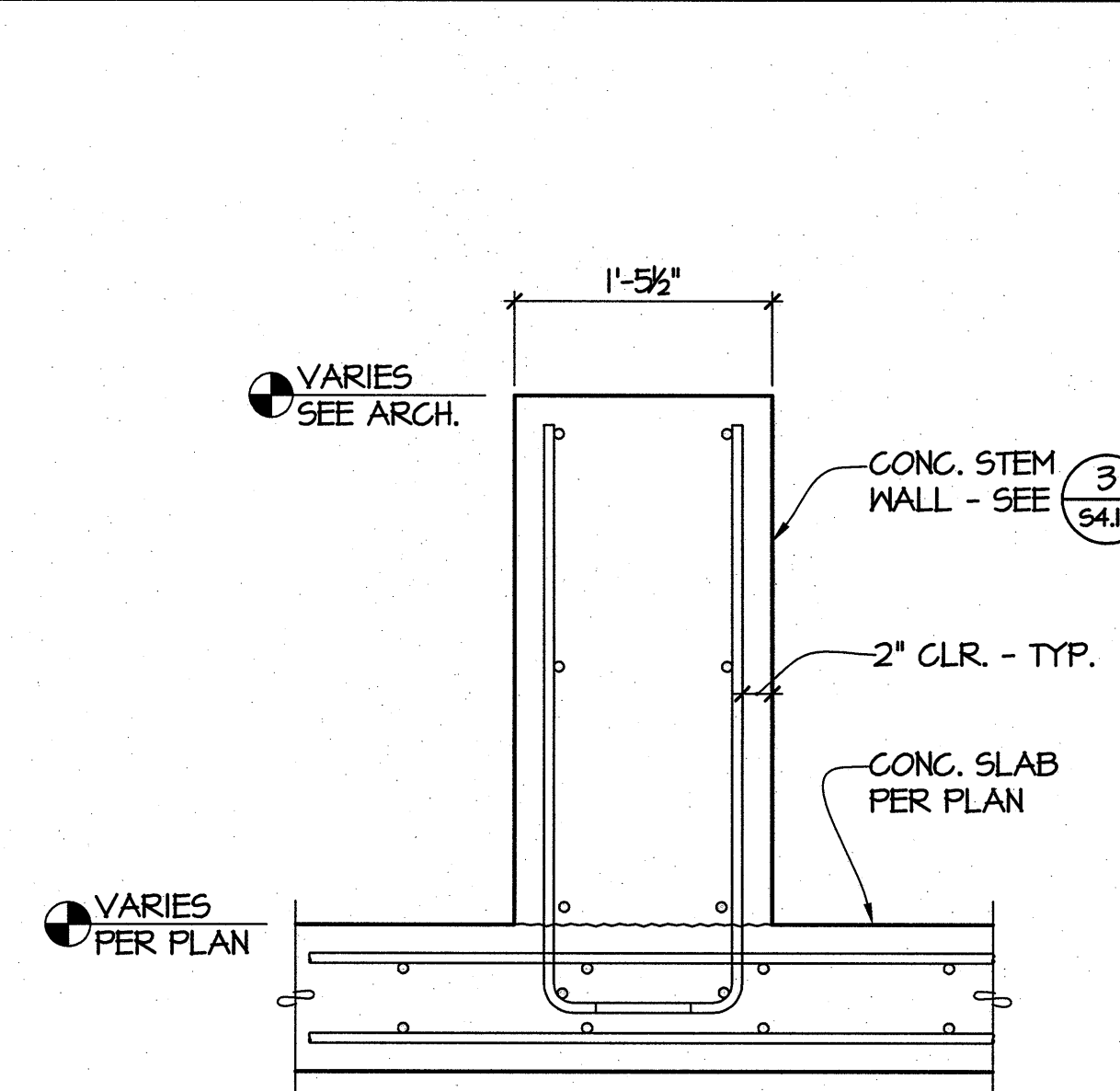
E



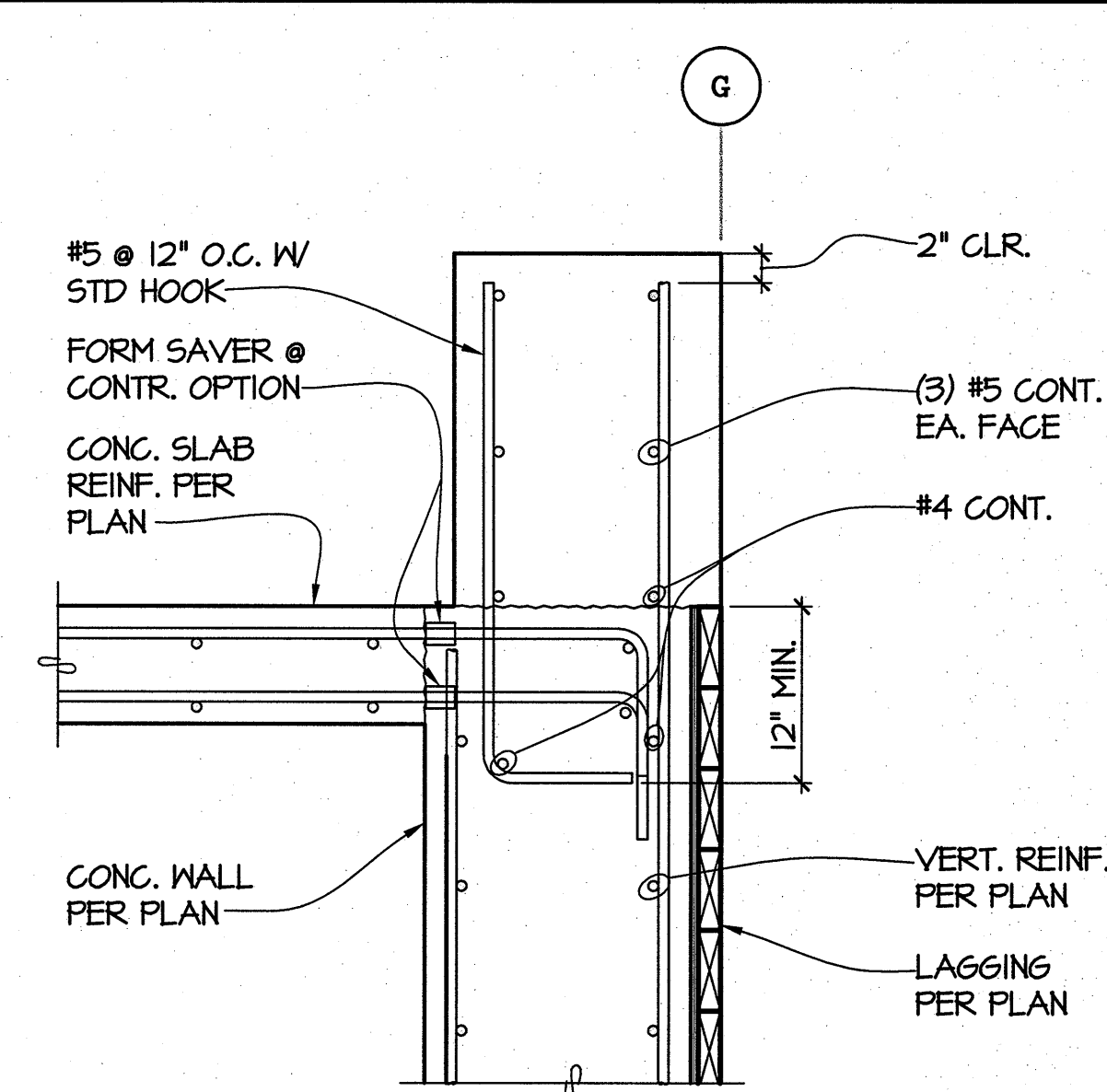
1 SECTION  
54.18 1'-1'-0"



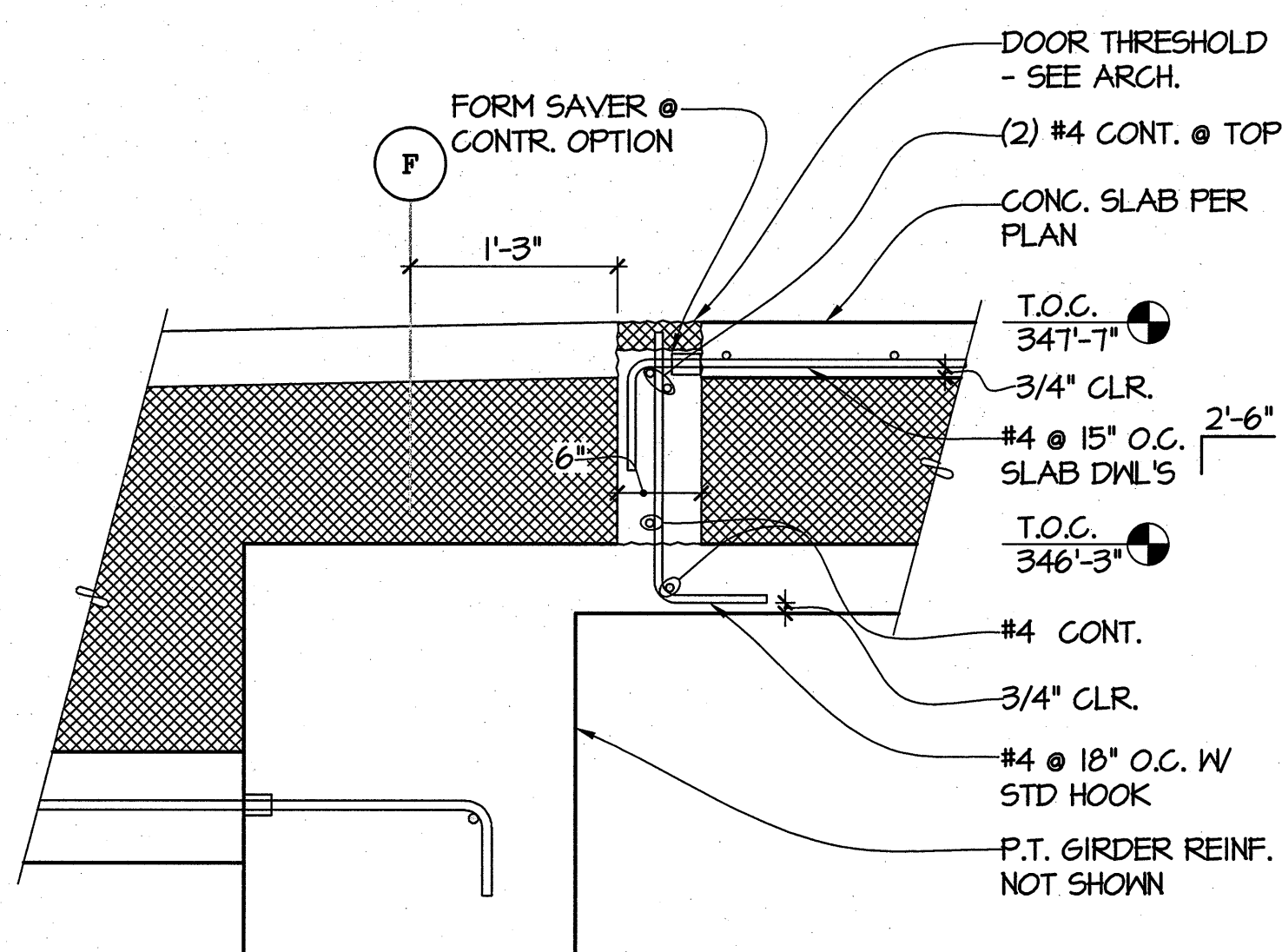
2 SECTION  
54.18 1'-1'-0"



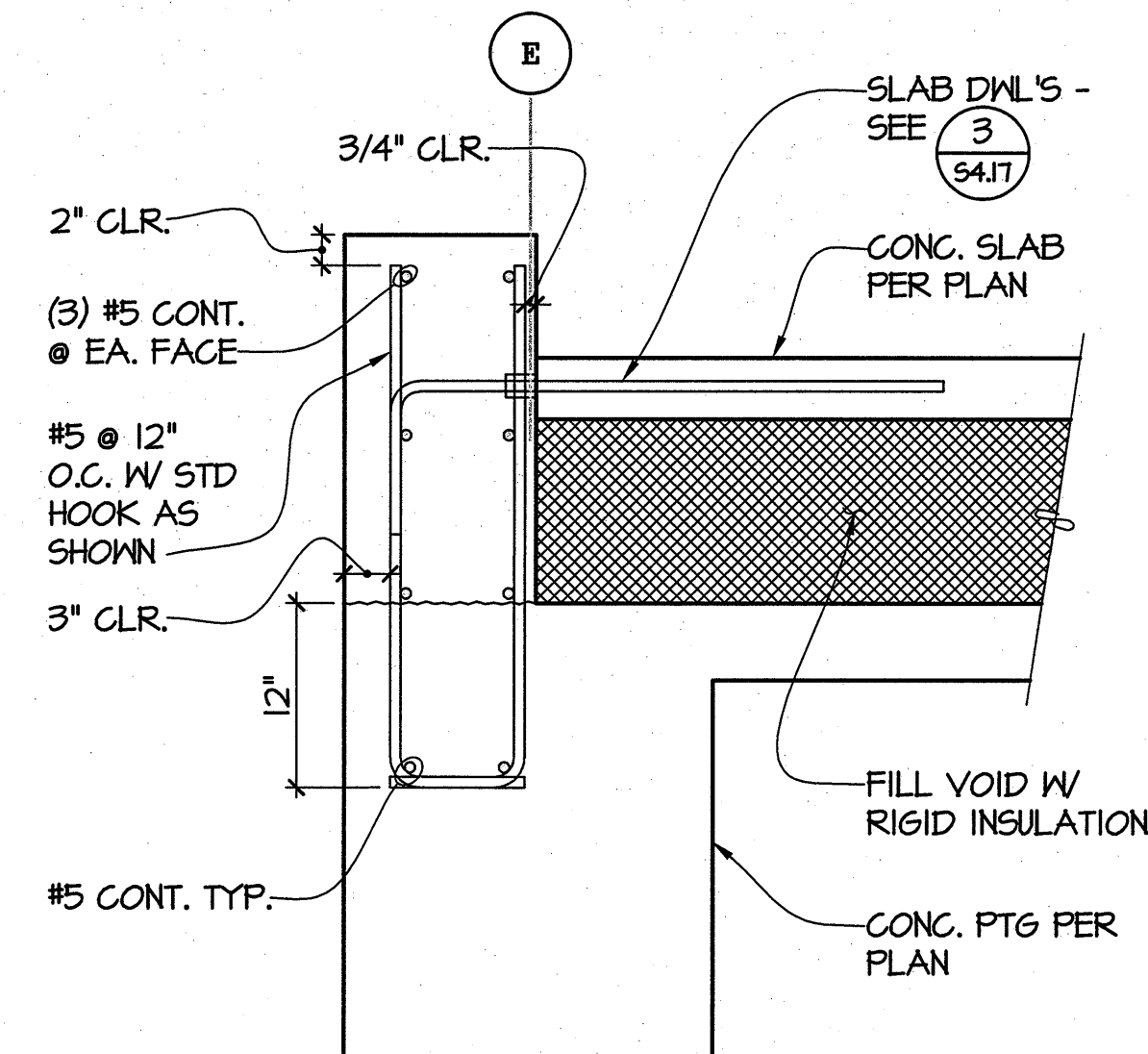
3 SECTION  
54.18 1'-1'-0"



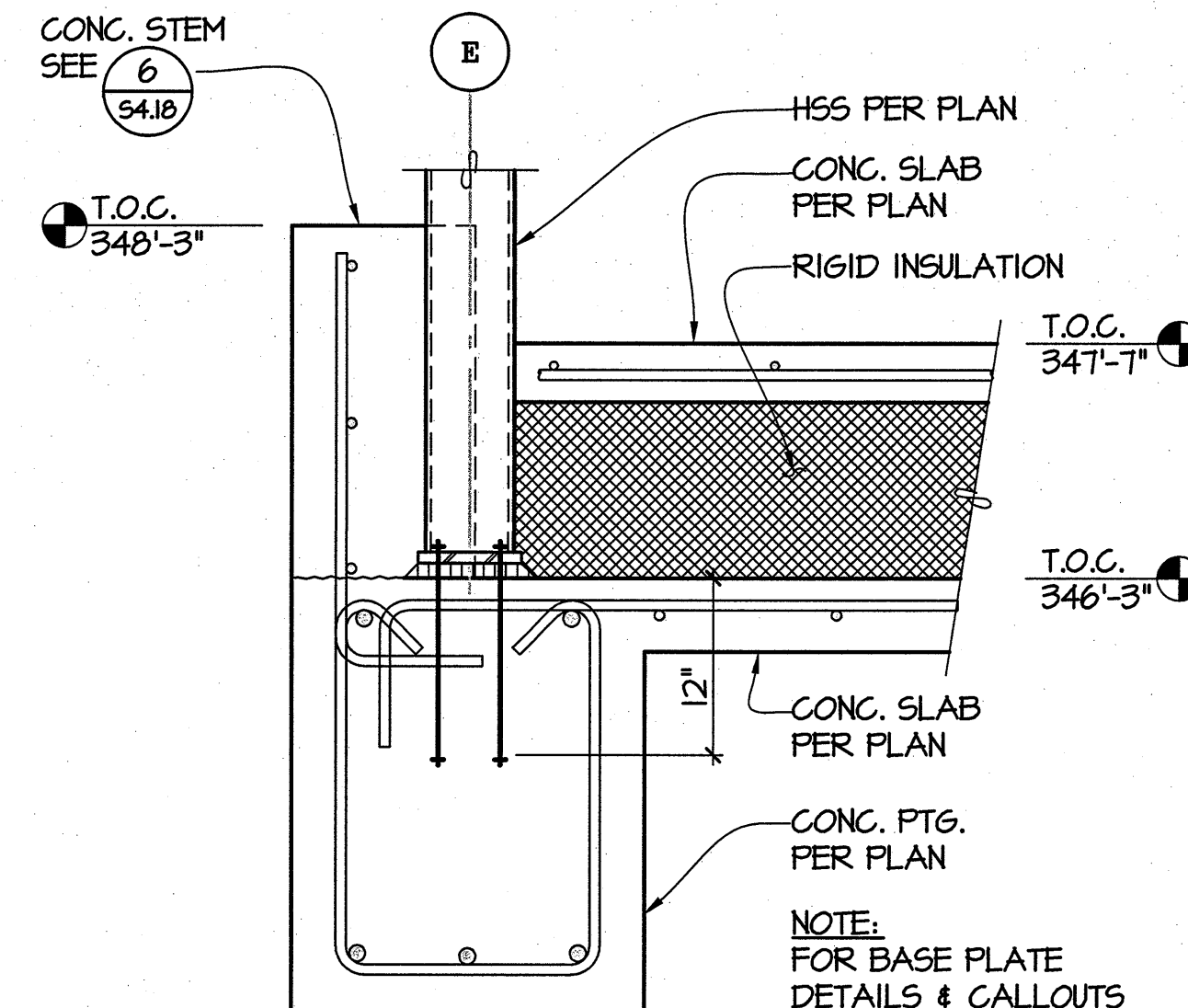
4 SECTION  
54.18 1'-1'-0"



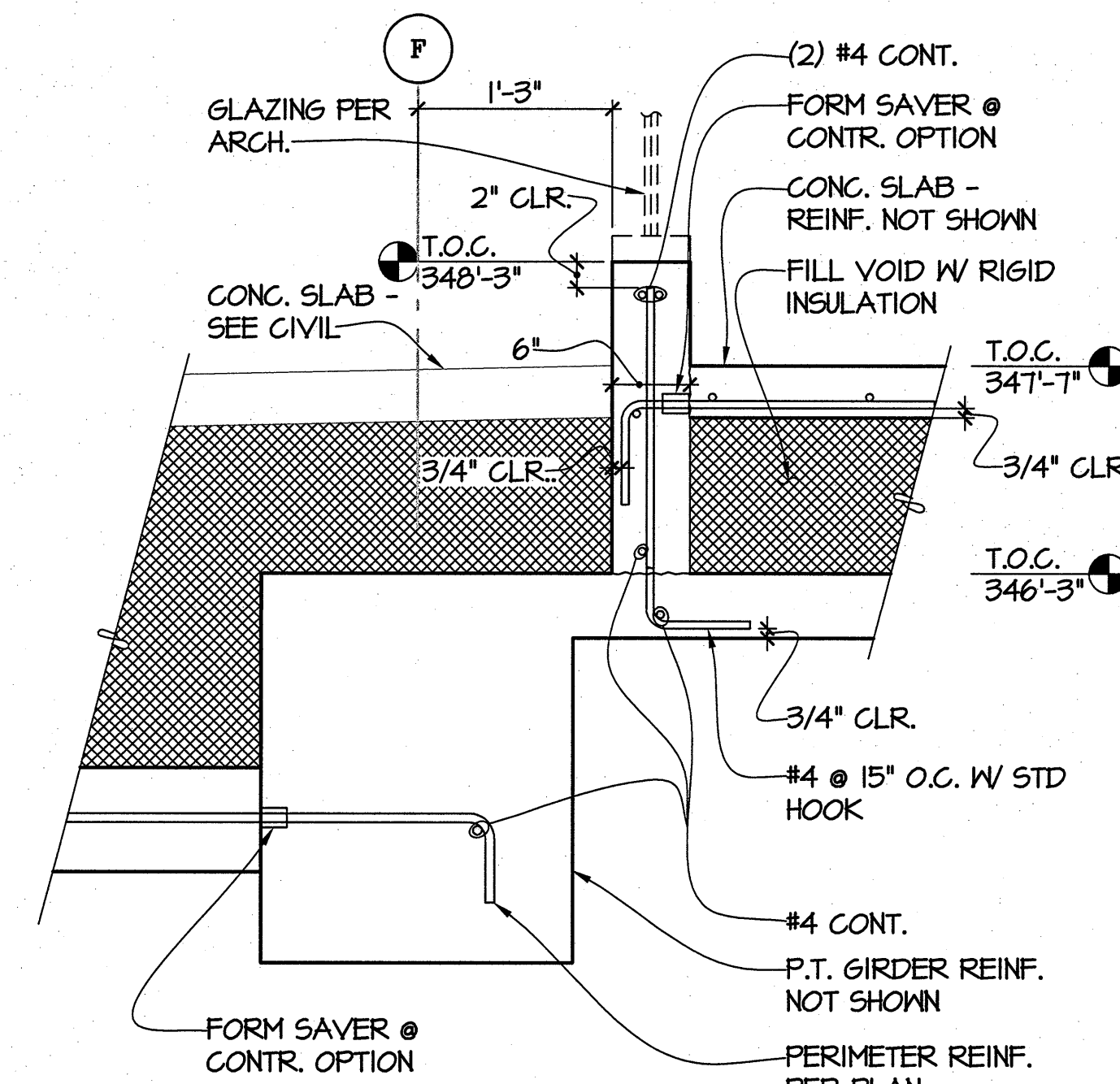
5 SECTION  
54.18 1'-1'-0"



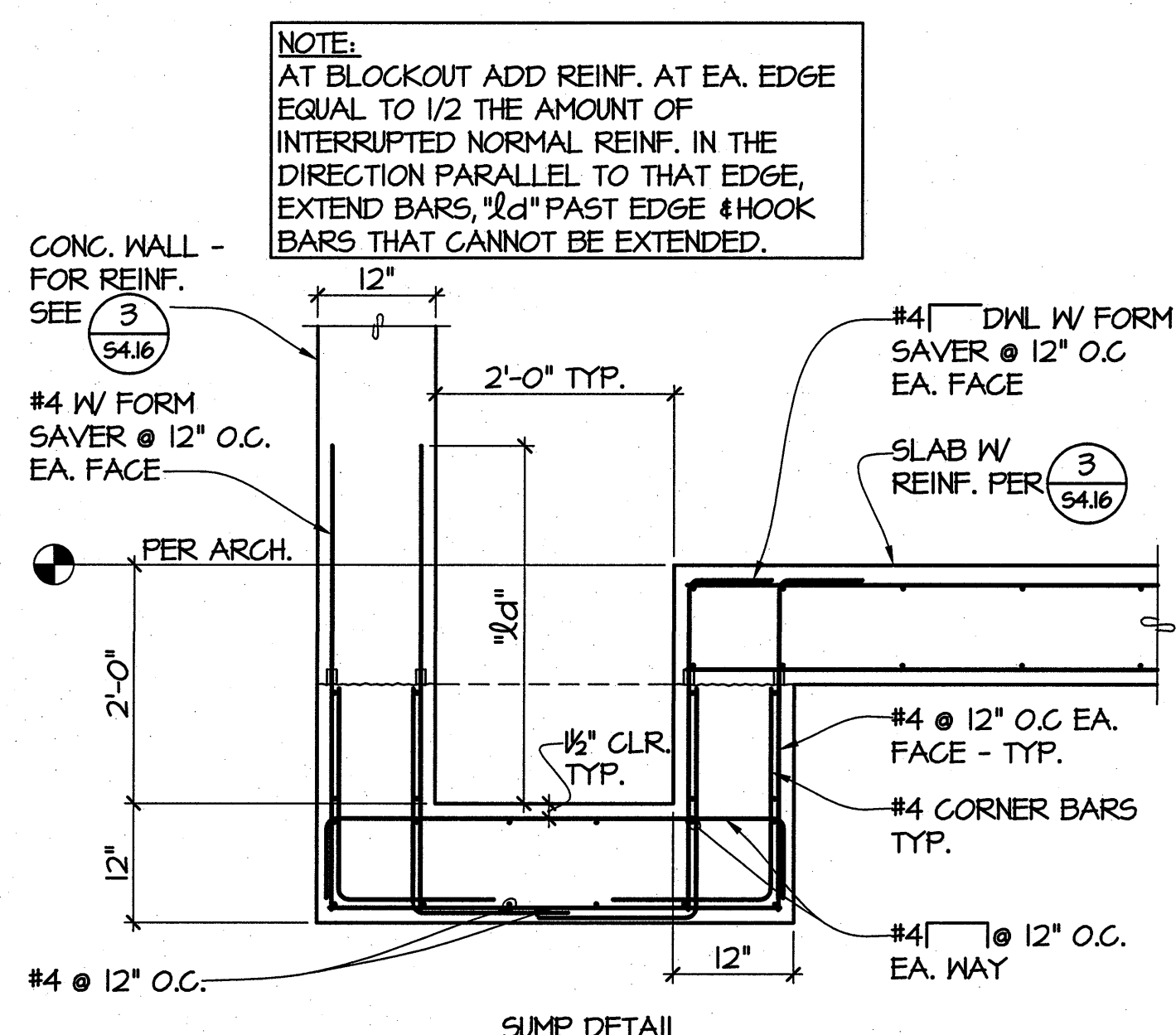
6 SECTION  
54.18 1'-1'-0"



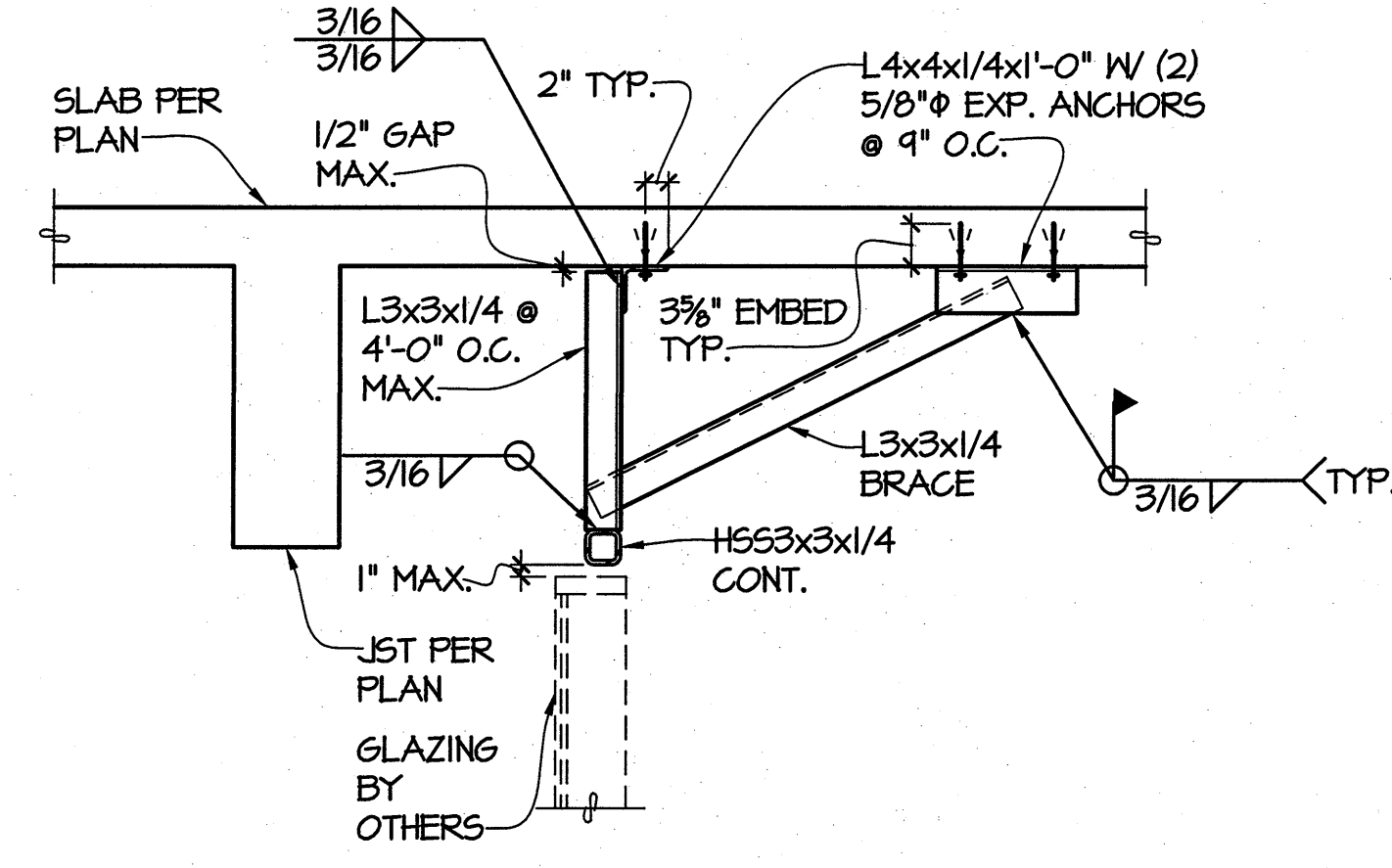
7 SECTION  
54.18 1'-1'-0"



8 SECTION  
54.18 1'-1'-0"



9 SECTION  
54.18 3/4'-1'-0"



10 SECTION  
54.18 3/4'-1'-0"

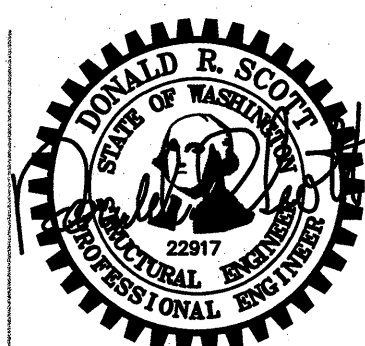


811 West Avenue, Suite 600  
Seattle, Washington 98104  
Tel: 206.461.0070

800 Pacific Avenue, Suite 1100  
Tacoma, Washington 98402  
Tel: 253.461.0070

GIFFIN • BOLTE • JURGENS  
ARCHITECTS P.C.

815 S.W. SECOND AVENUE • PORTLAND, OREGON 97204  
(503) 223-0992 www.gbjarch.com FAX (503) 294-5961



MultiCare

EMERGENCY DEPARTMENT & CANCER CENTER EXPANSION

TACOMA, WASHINGTON

REVISION	DESCRIPTION	DATE
1	CCD #1	02-20-09

Date 09-26-2008  
Scale AS NOTED  
Drawn By rdw  
Job No. 4034

CONCRETE BEAM  
DETAILS

S4  
18