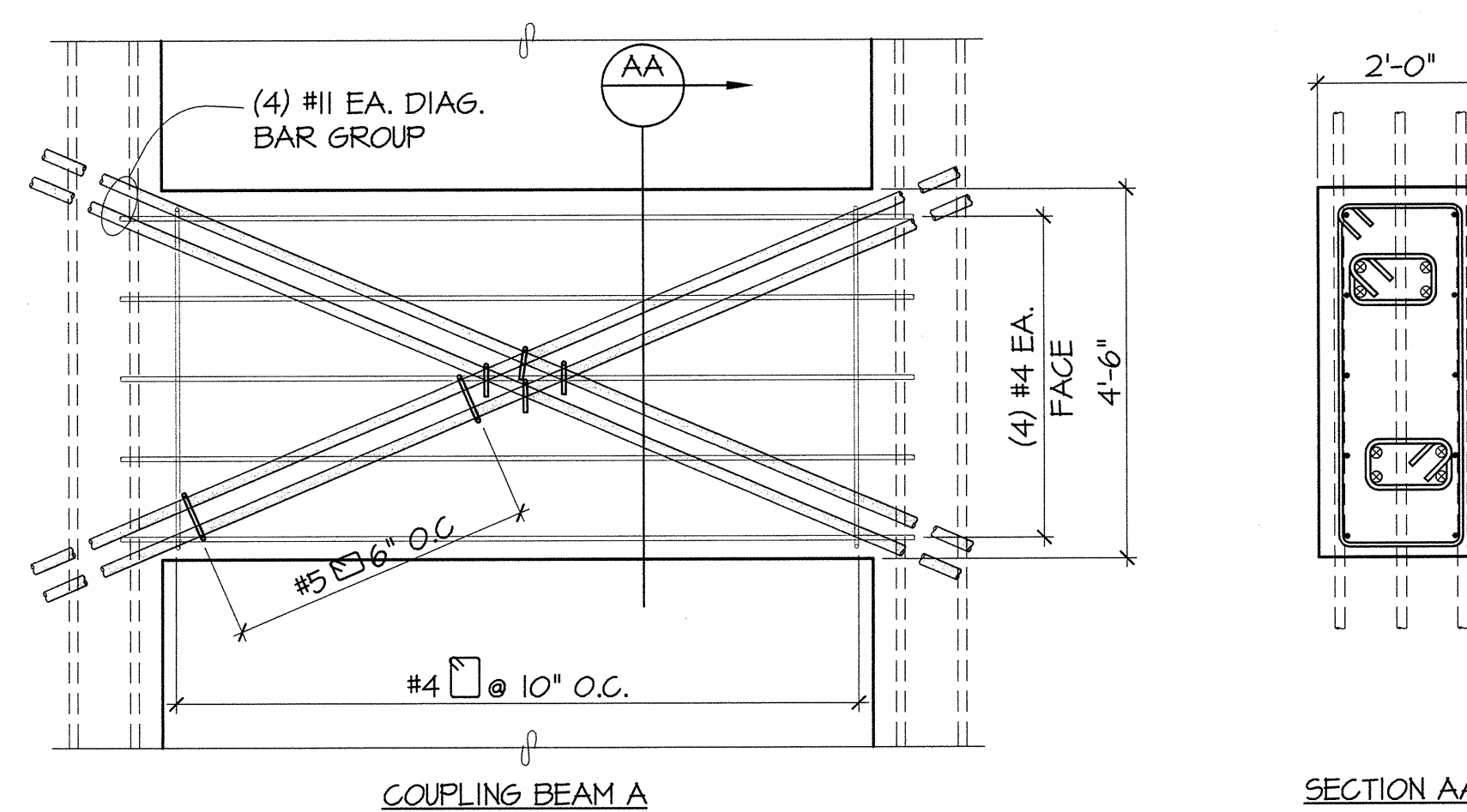
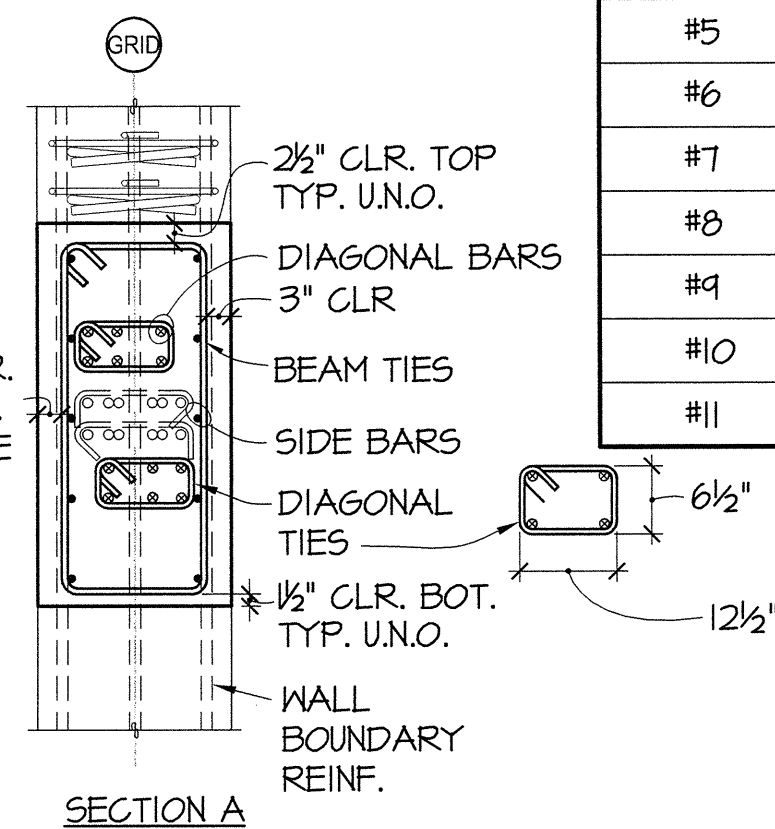
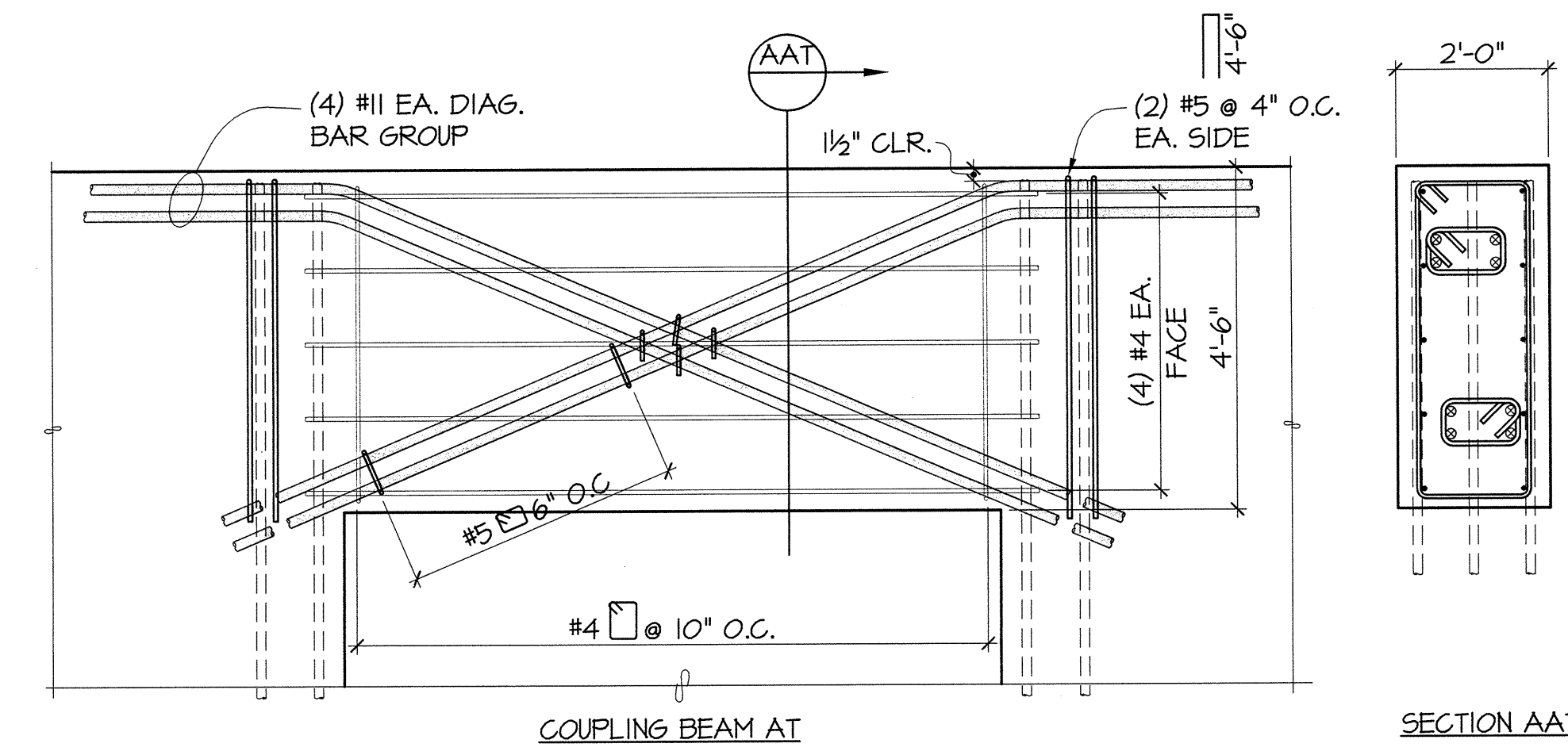


1 TYPICAL COUPLER BEAM  
54.30 1/2"=1'-0"

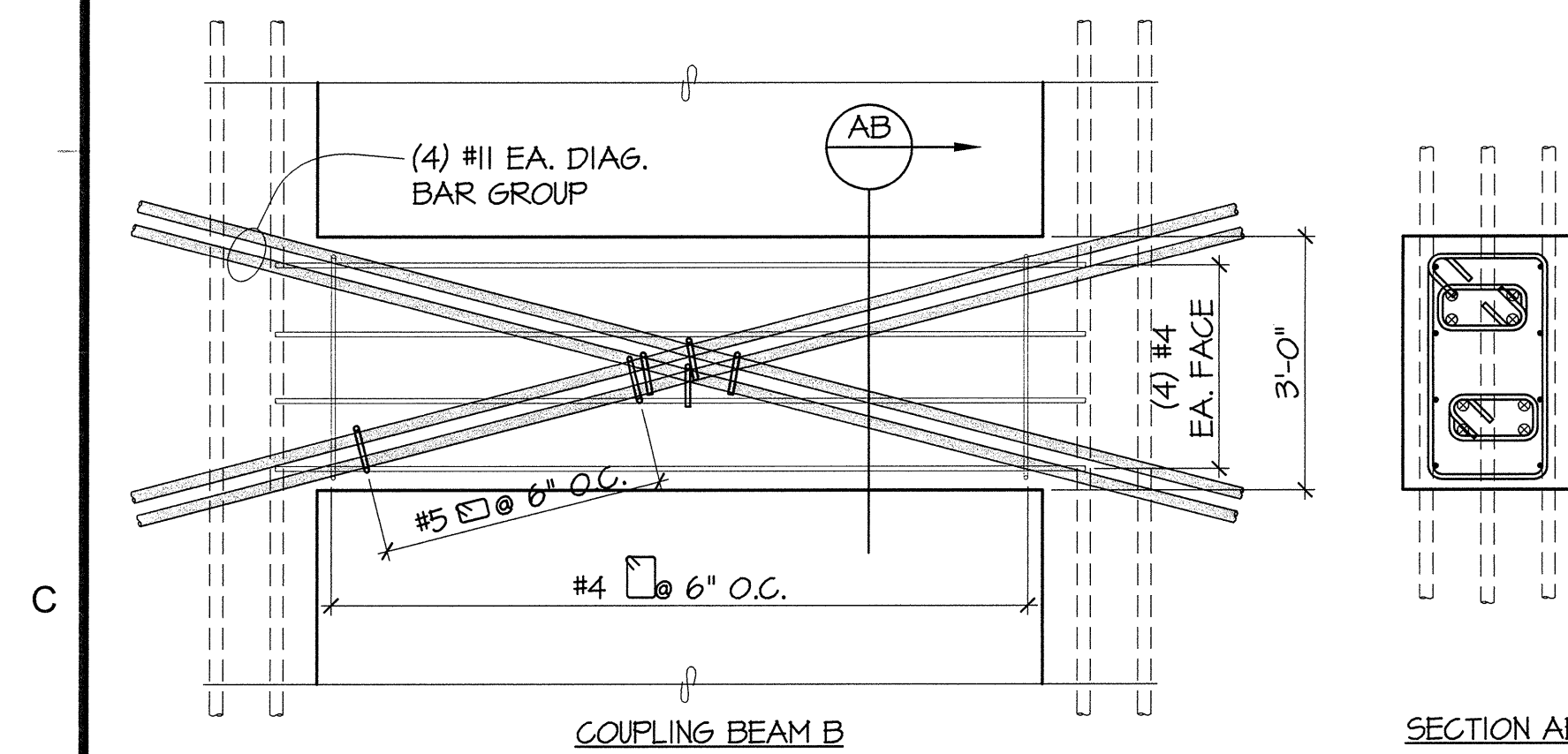
COUPLING BEAM DEVELOPMENT LENGTH TABLE		
BAR SIZE	1/4"	1/2"
#4	2'-8"	0'-9"
#5	3'-3"	1'-0"
#6	4'-0"	1'-2"
#7	5'-8"	1'-5"
#8	6'-6"	1'-7"
#9	7'-4"	1'-9"
#10	8'-2"	2'-0"
#11	9'-2"	2'-3"



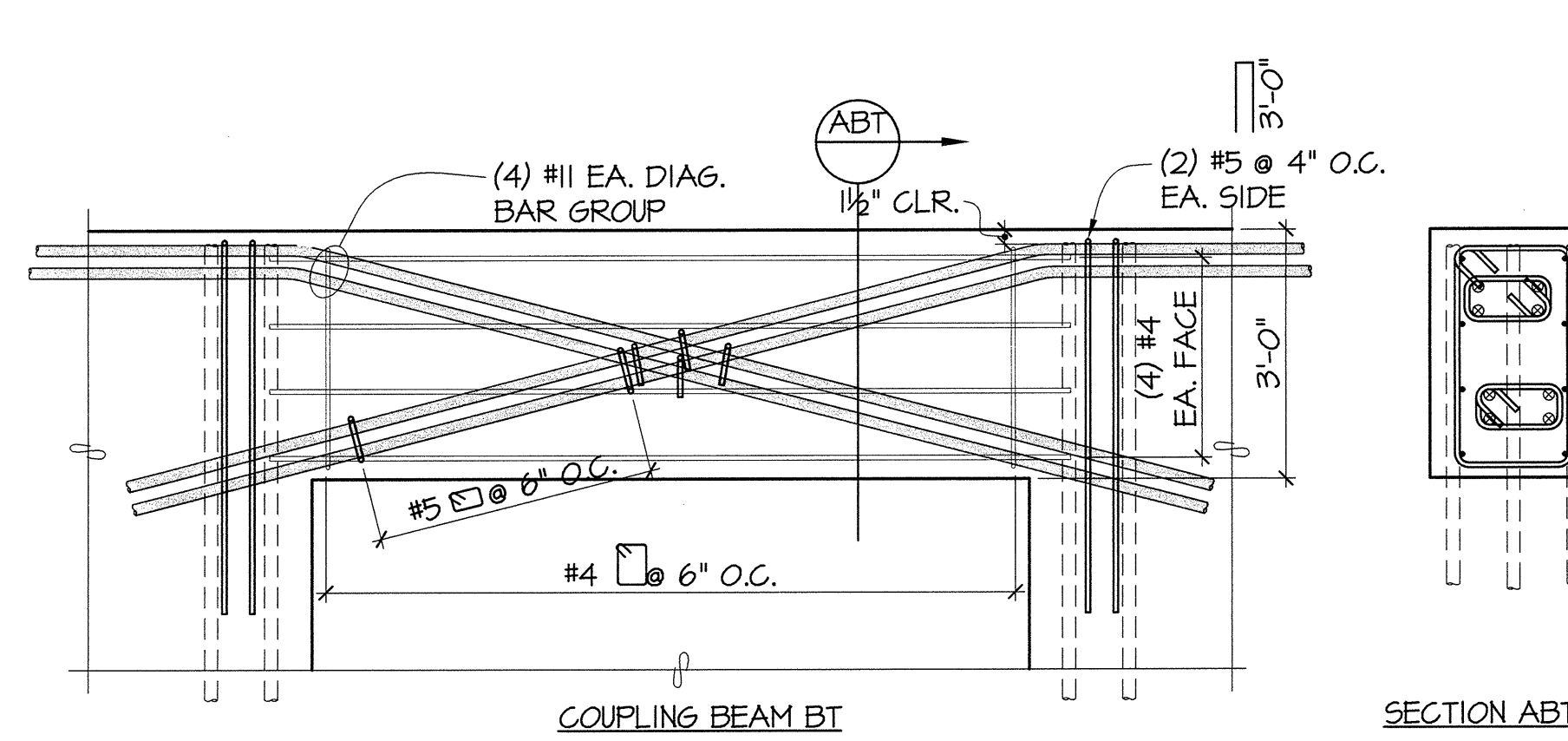
2 DETAIL  
54.30 1/2"=1'-0"



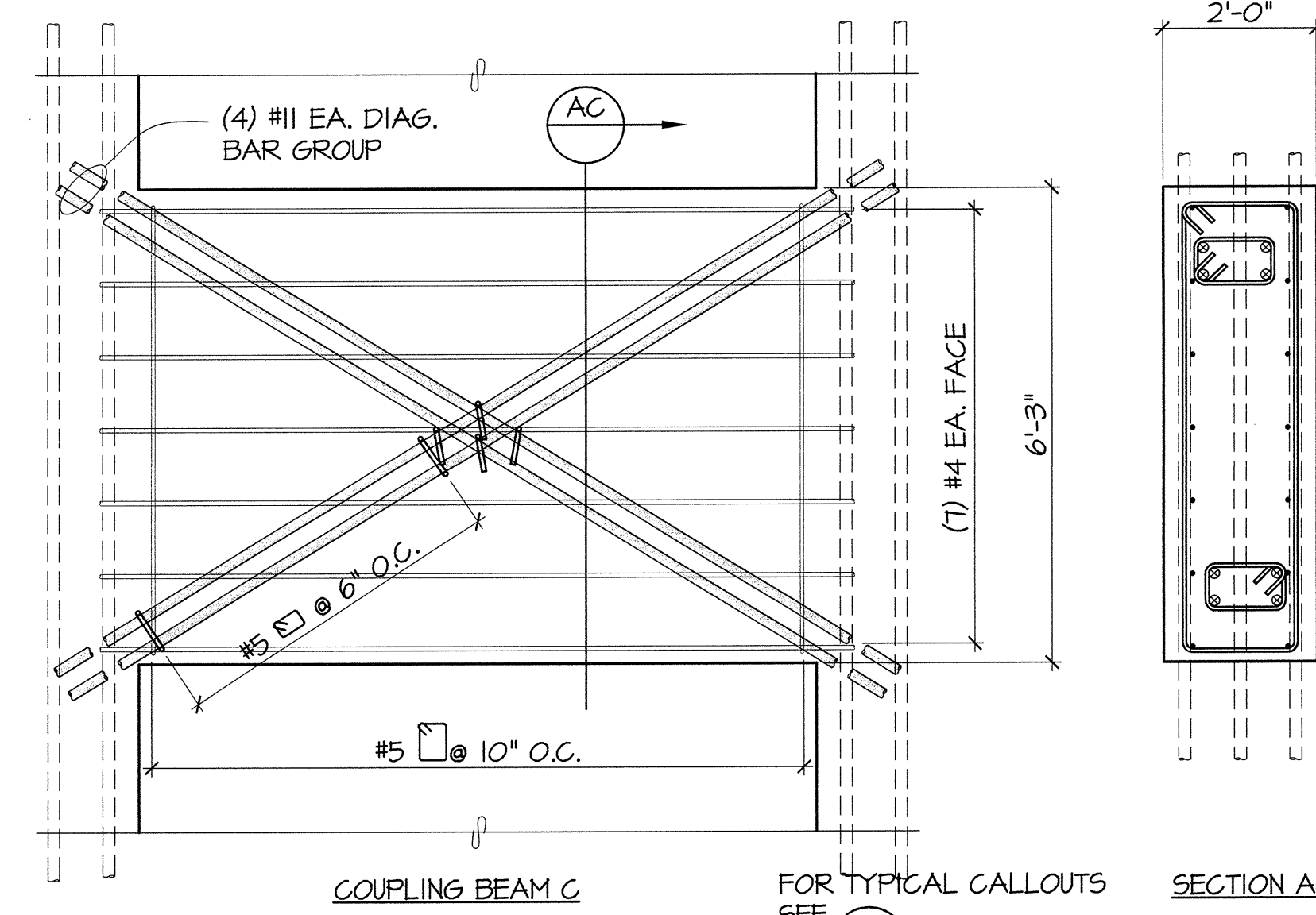
3 DETAIL  
54.30 1/2"=1'-0"



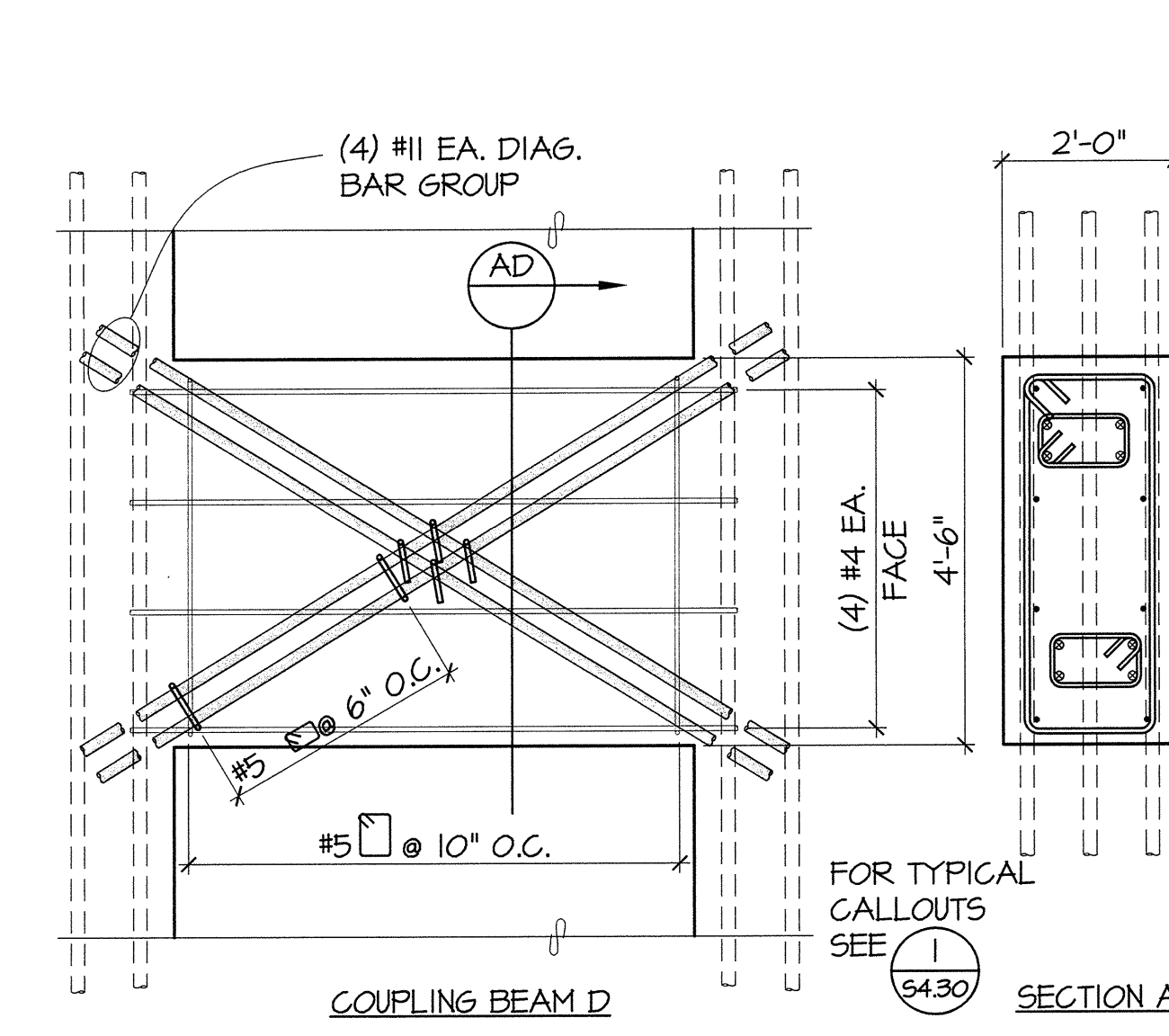
4 DETAIL  
54.30 1/2"=1'-0"



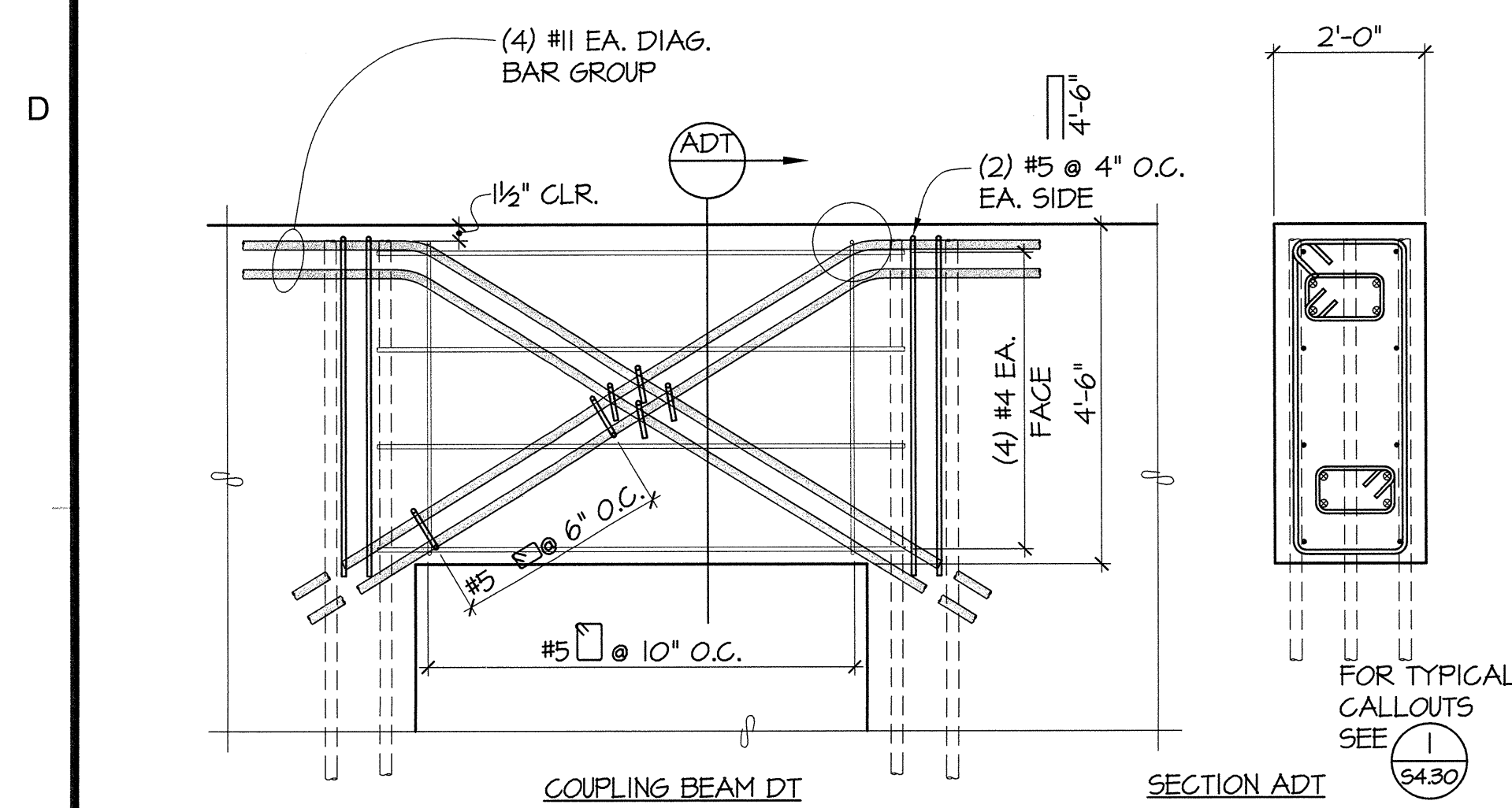
5 DETAIL  
54.30 1/2"=1'-0"



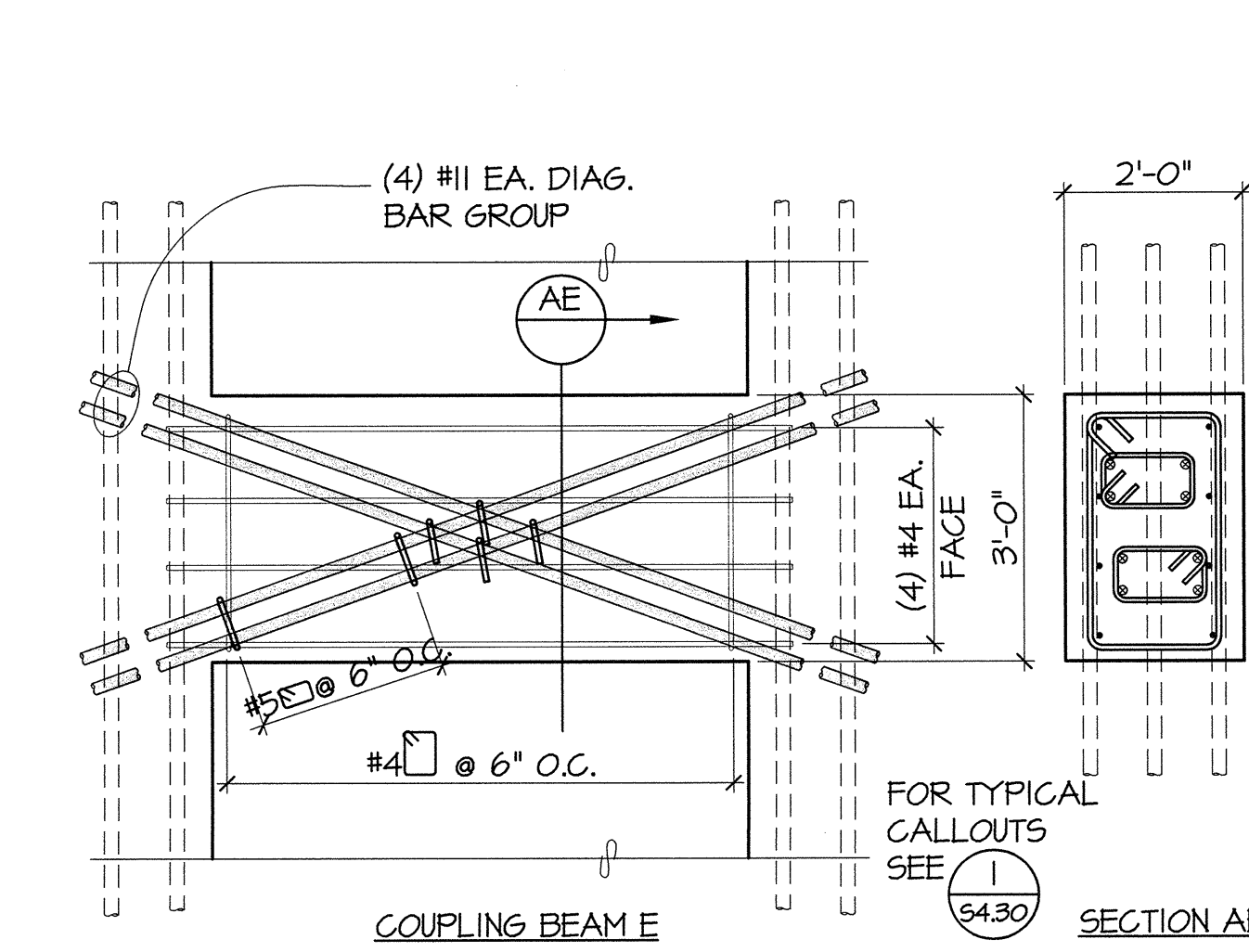
6 DETAIL  
54.30 1/2"=1'-0"



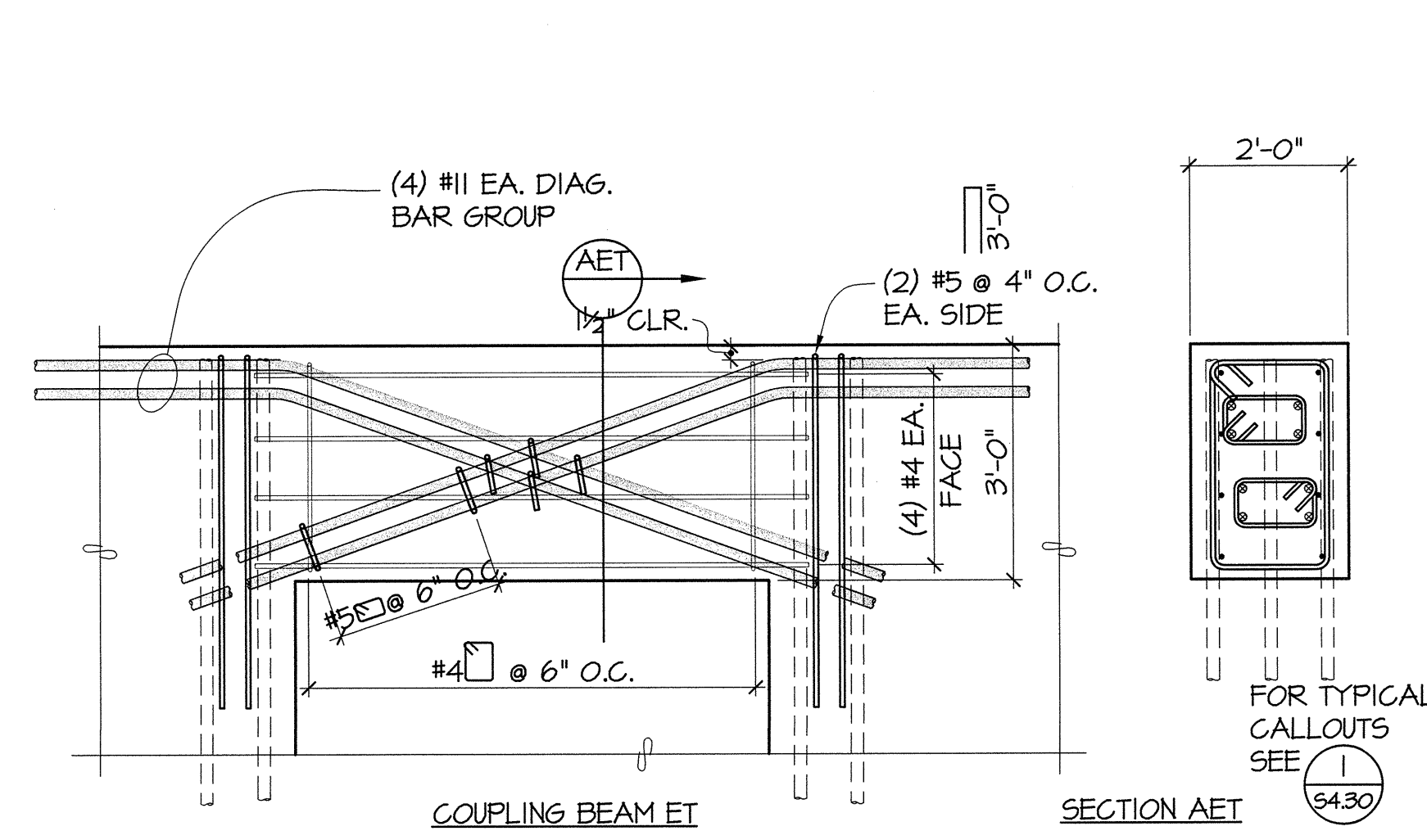
7 DETAIL  
54.30 1/2"=1'-0"



8 DETAIL  
54.30 1/2"=1'-0"



9 DETAIL  
54.30 1/2"=1'-0"



10 DETAIL  
54.30 1/2"=1'-0"



811 First Avenue, Suite 600  
Seattle, Washington 98104  
Tel: 206.322.0070

900 Pacific Avenue, Suite 1100  
Tacoma, Washington 98402  
Tel: 253.863.0797

GIFFIN • BOLTE • JURGENS  
ARCHITECTS

815 S.W. SECOND AVENUE - PORTLAND, OREGON 97204  
(503) 223-0992 www.gbjarch.com FAX (503) 294-5961



MultiCare

EMERGENCY DEPARTMENT & CANCER CENTER EXPANSION

TACOMA, WASHINGTON

Date 09-26-2008  
Scale NO SCALE  
Drawn By rdw  
Job No. 4034

CONCRETE  
COUPLING BEAM  
DETAILS

S4  
30