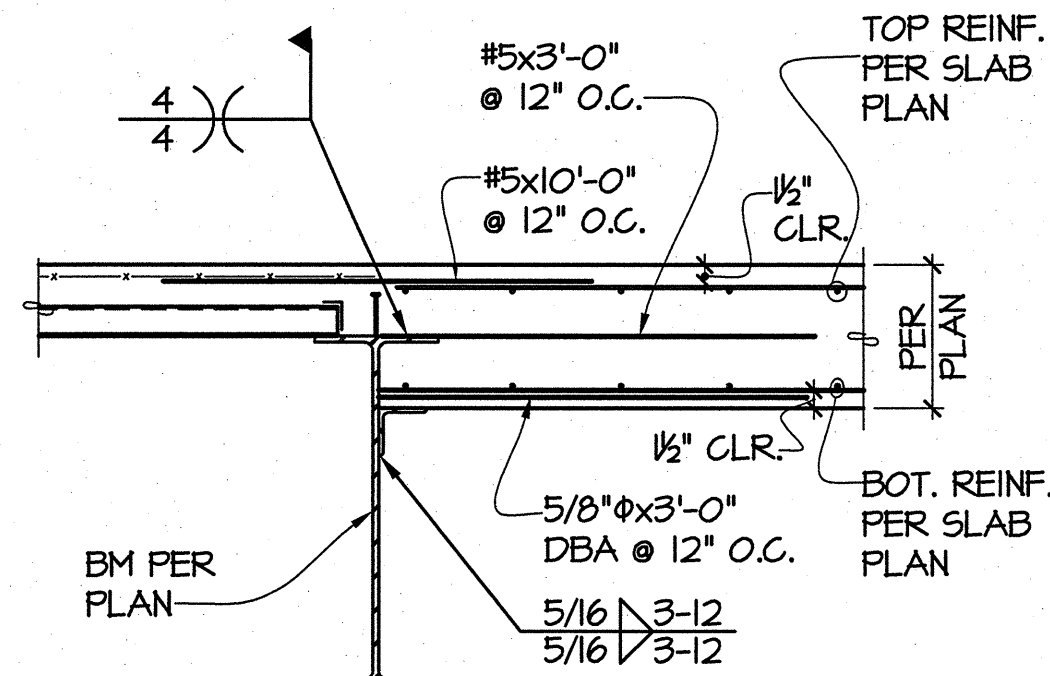
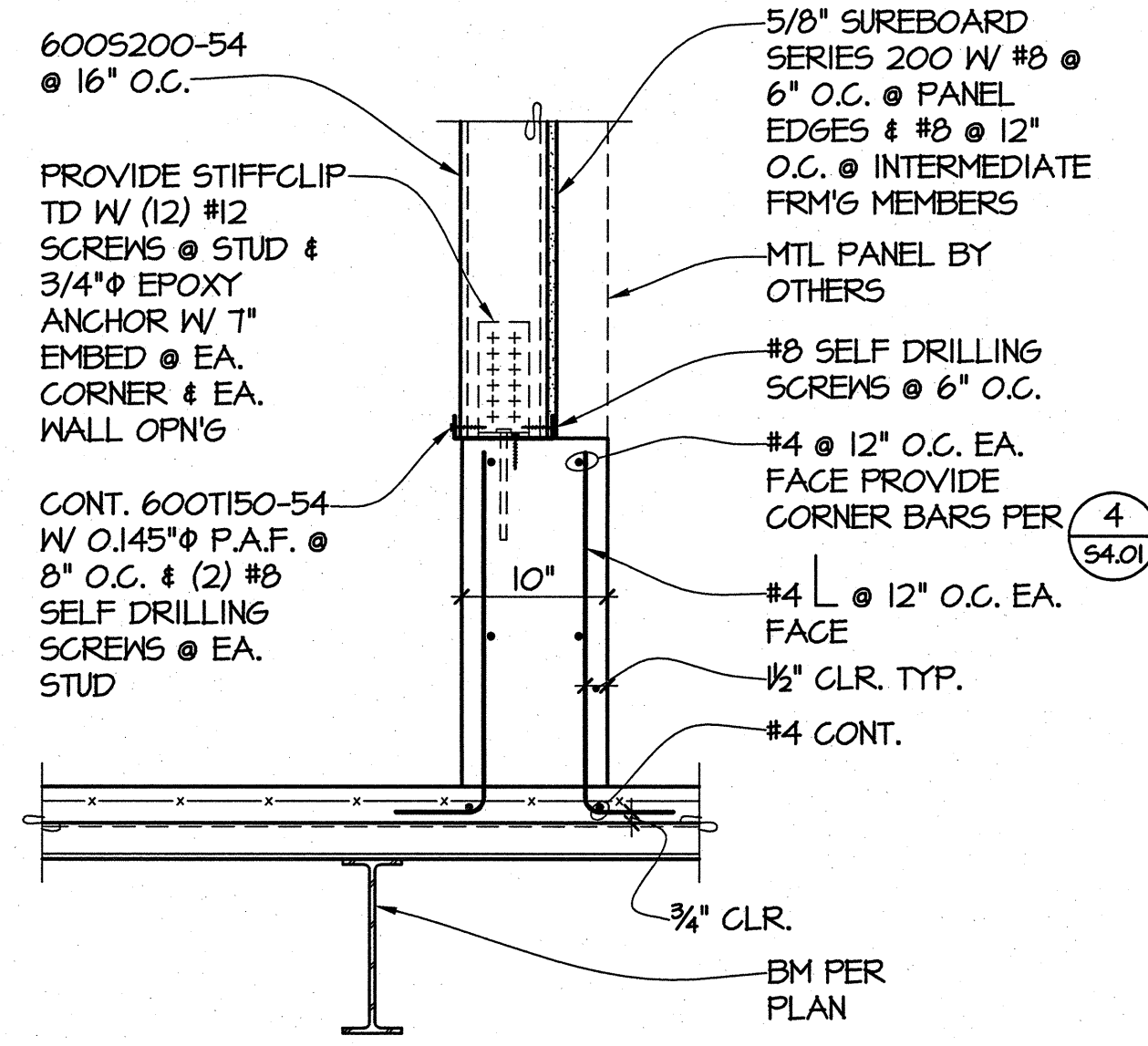


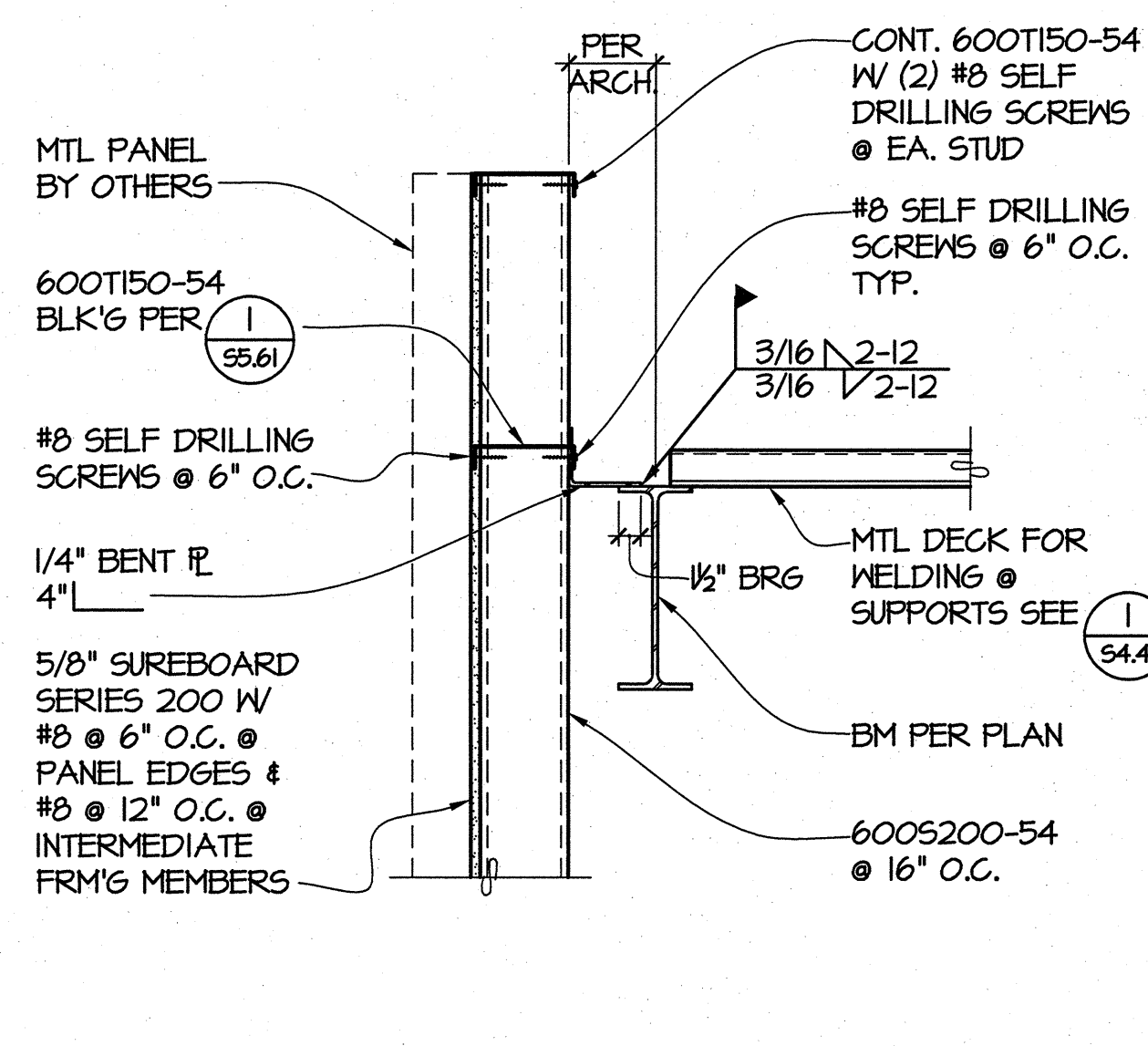
A  
B  
C  
D  
E



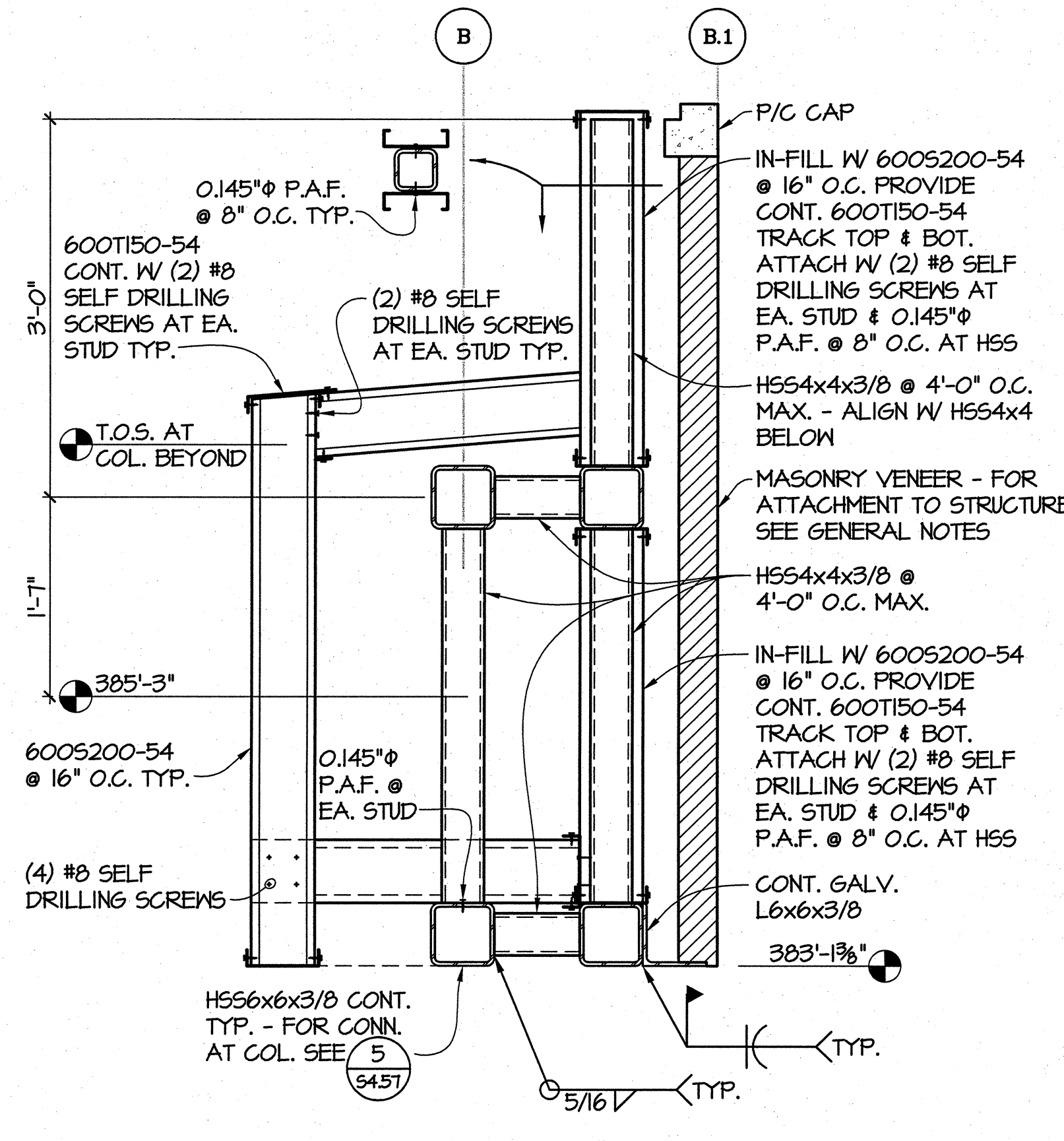
1 DETAIL  
3/4"=1'-0"



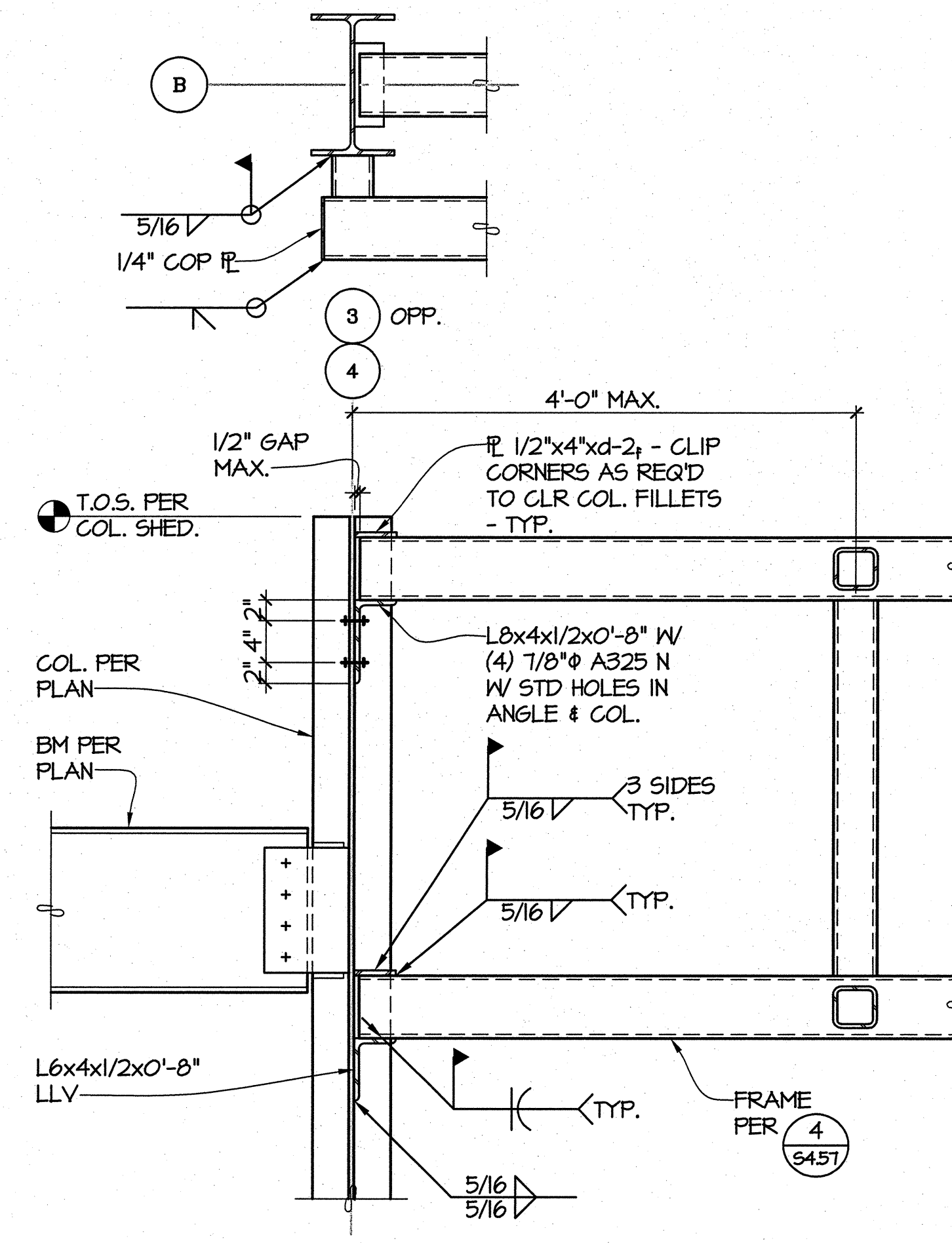
2 DETAIL  
1"=1'-0"



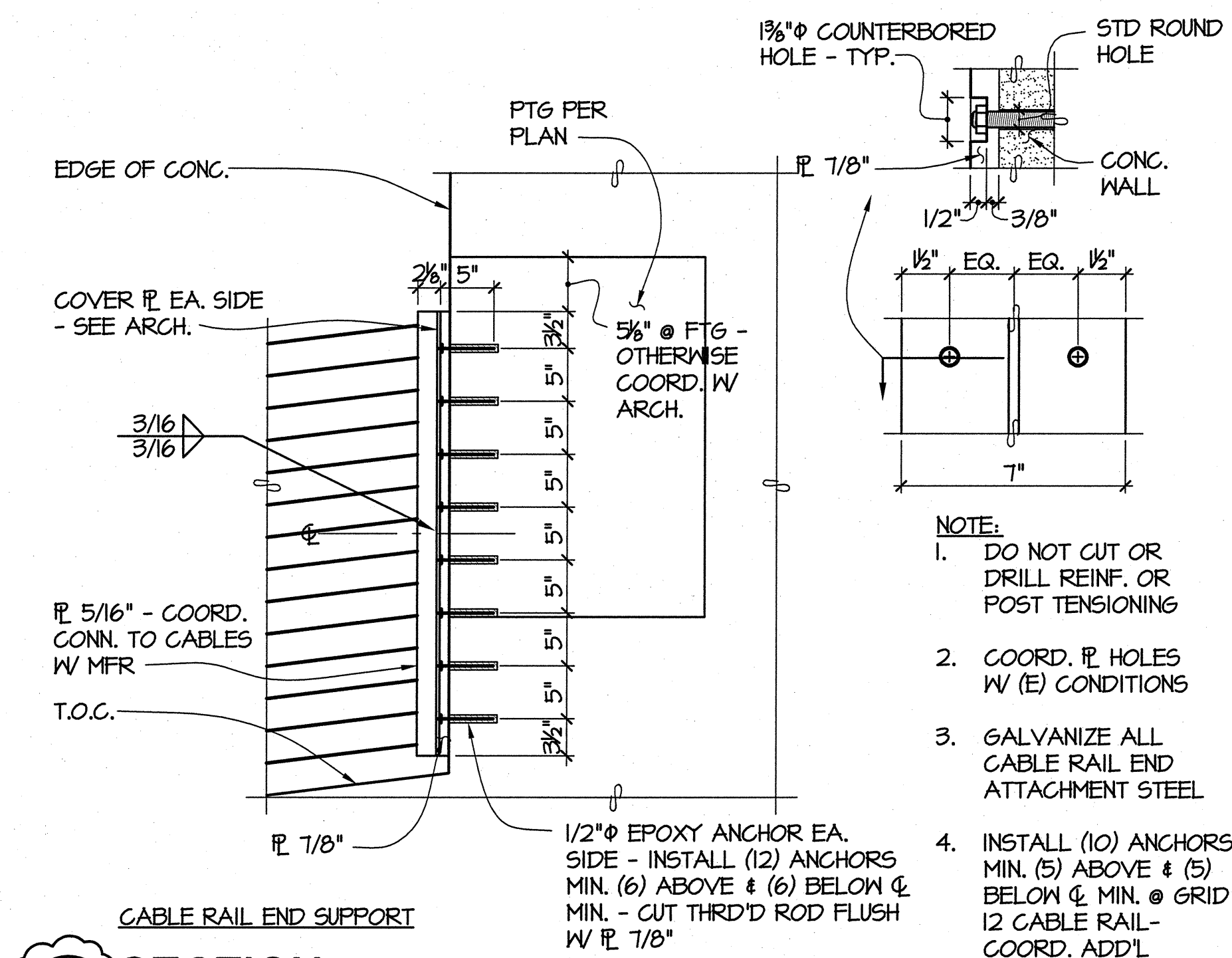
3 DETAIL  
1"=1'-0"



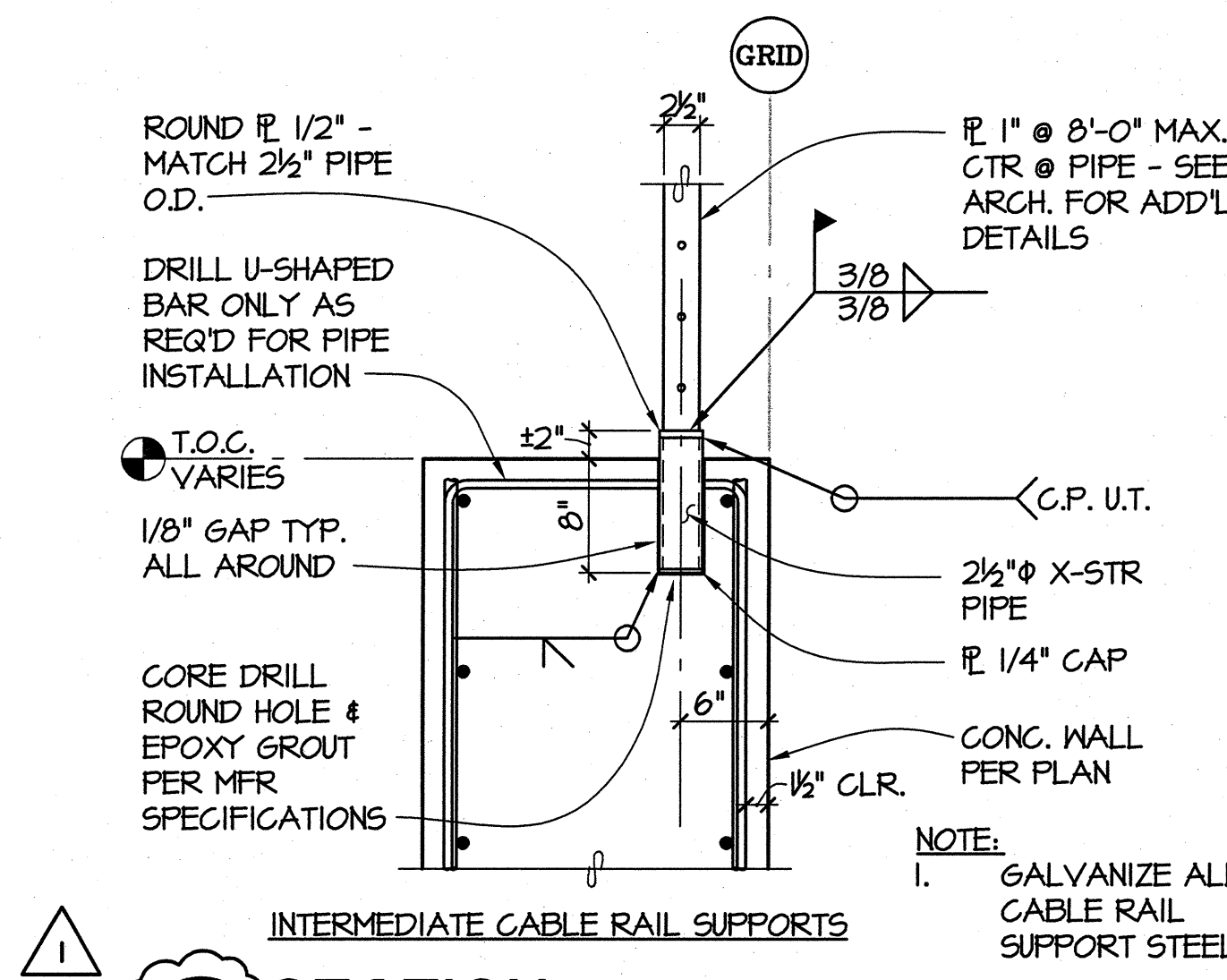
4 SECTION  
1"=1'-0"



5 SECTION  
1"=1'-0"



6 SECTION  
NO SCALE



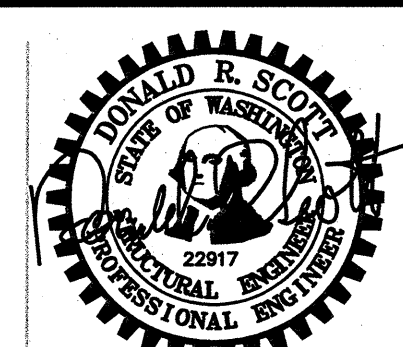
7 SECTION  
NO SCALE



811 First Avenue, Suite 620  
Tacoma, Washington 98404  
Tel: 253.563.0100  
810 Pacific Avenue, Suite 1100  
Tacoma, Washington 98402  
Tel: 253.563.0100

GIFFIN • BOLTE • JURGENS  
ARCHITECTS

815 S.W. SECOND AVENUE • PORTLAND, OREGON 97204  
(503) 223-0992 www.gbjarch.com FAX (503) 294-3961



MultiCare

EMERGENCY DEPARTMENT & CANCER CENTER EXPANSION

TACOMA, WASHINGTON

REVISION	DESCRIPTION	DATE
1	CCD #8	03-13-04

Date 09-26-2008  
Scale AS NOTED  
Drawn By JMW  
Job No. 4034

STEEL  
DETAILS

S4  
57