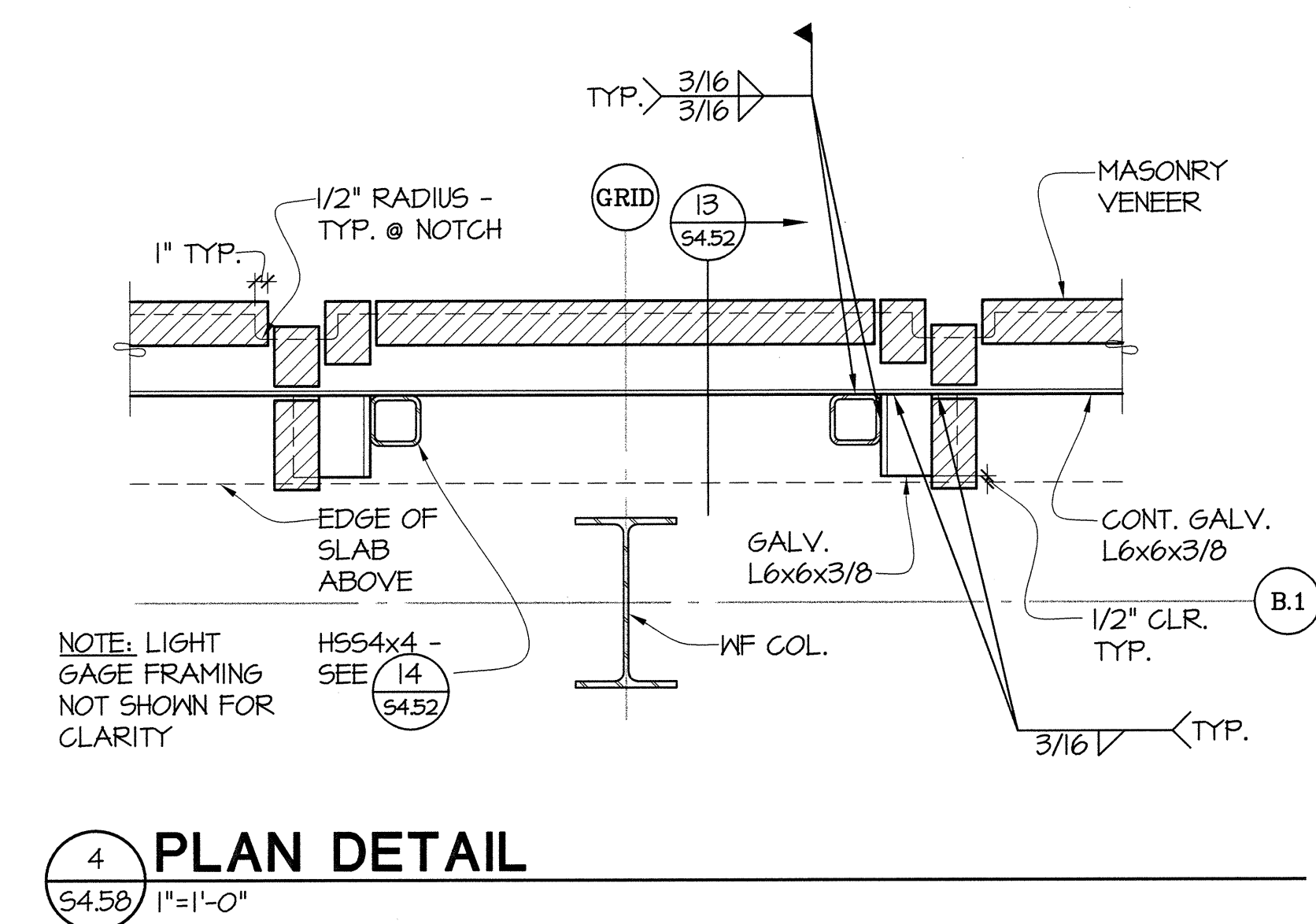
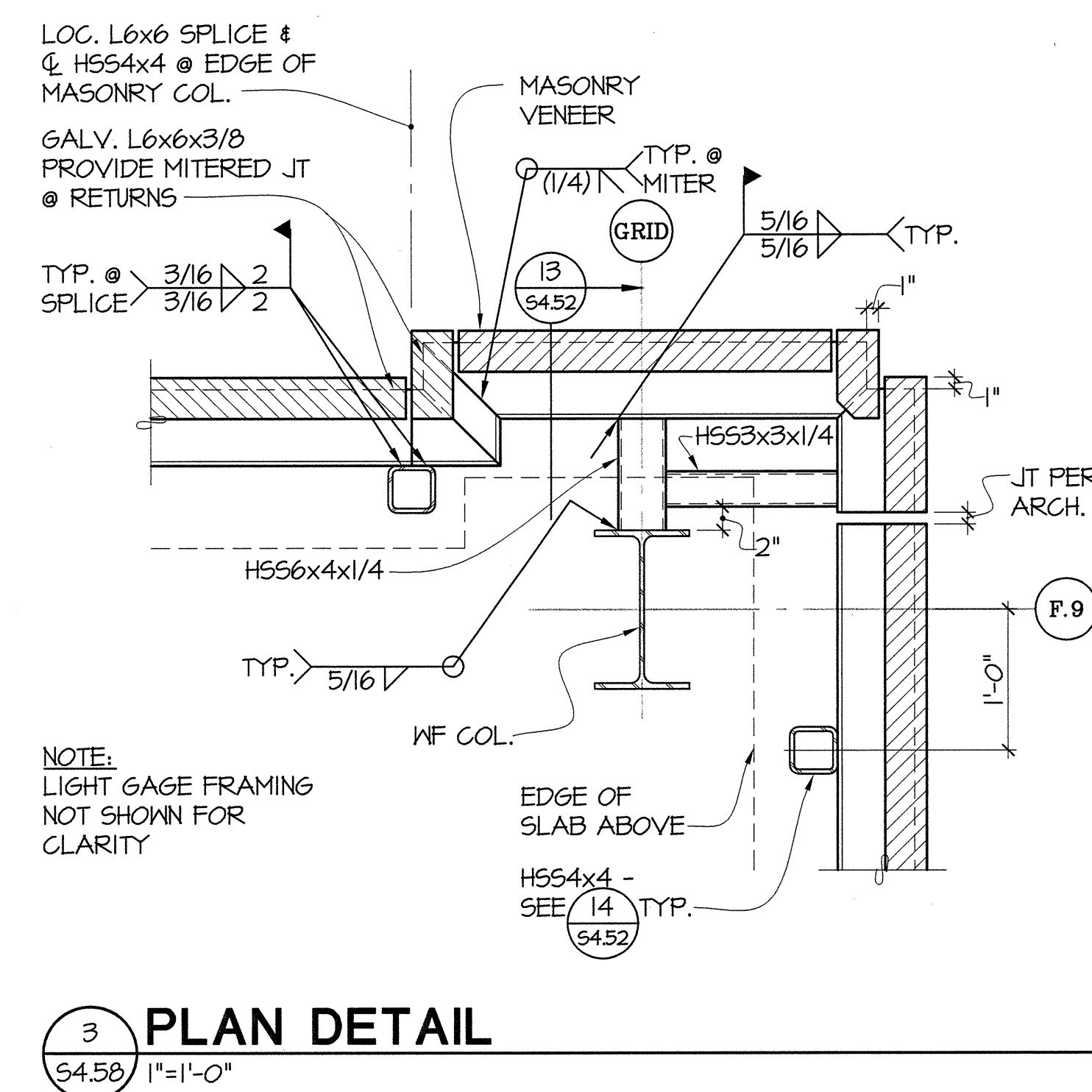
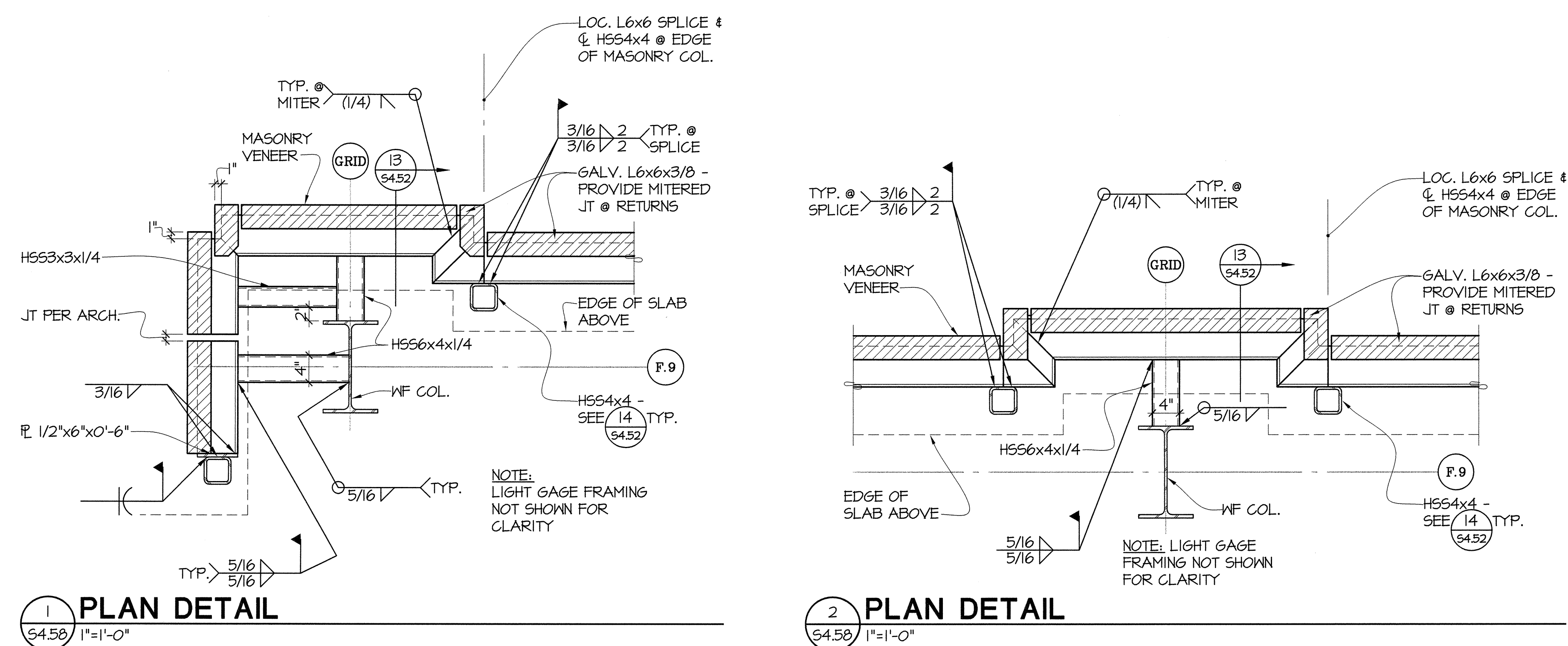


A

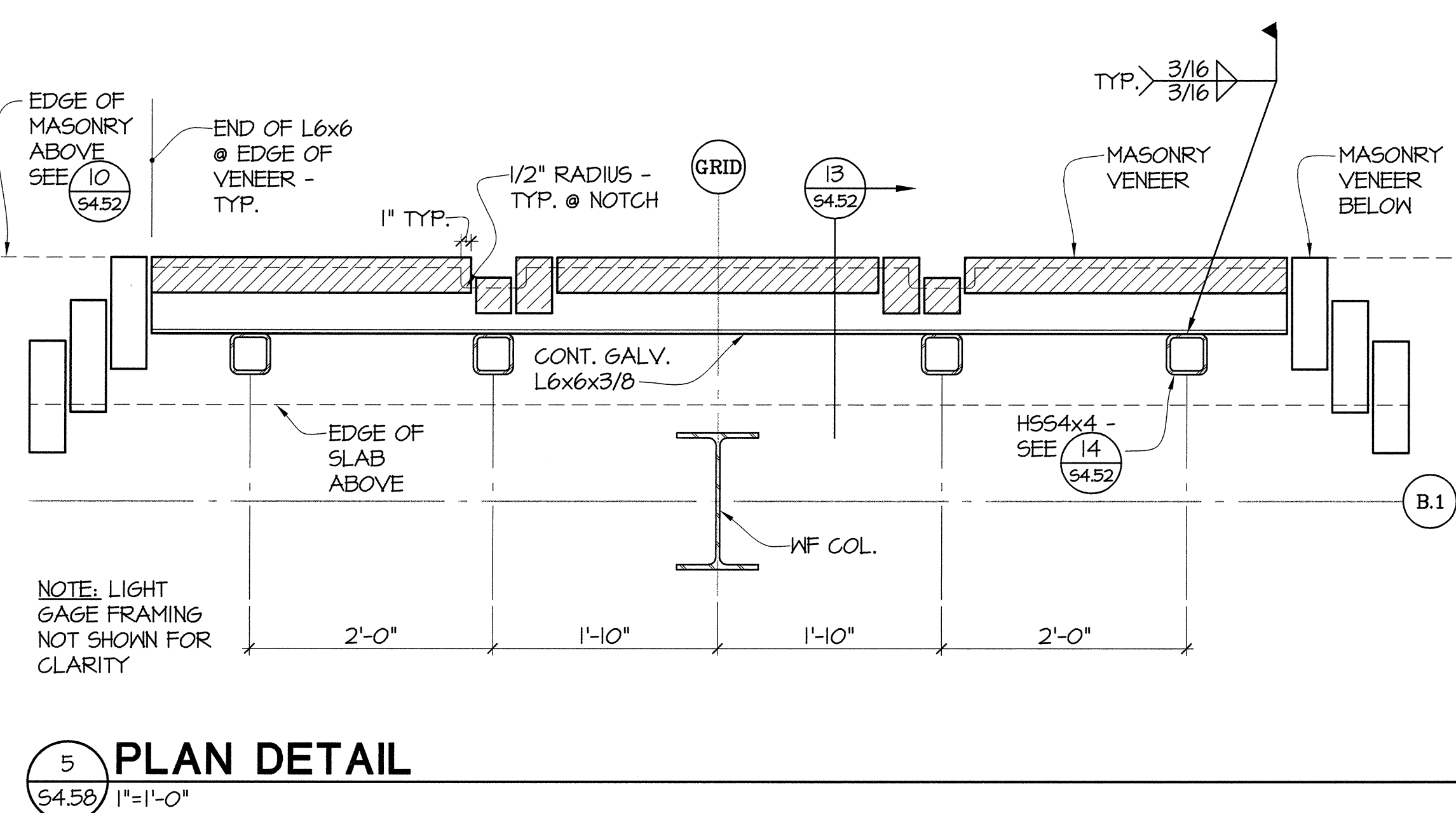
B



C

D

E



811 First Avenue, Suite 620
Seattle, Washington 98104
Tel: 206.383.3070

500 Pacific Avenue, Suite 1100
Tacoma, Washington 98402
Tel: 253.563.2707

GIFFIN • BOLTE • JURGENS
ARCHITECTS

815 S.W. SECOND AVENUE • PORTLAND, OREGON 97204
(503) 223-0992 www.gbarch.com FAX (503) 294-3961



MultiCare

EMERGENCY DEPARTMENT & CANCER CENTER EXPANSION

TACOMA, WASHINGTON

Date 09-26-2008
Scale AS NOTED
Drawn By DGC
Job No. 4034

STEEL
DETAILS

S4
58