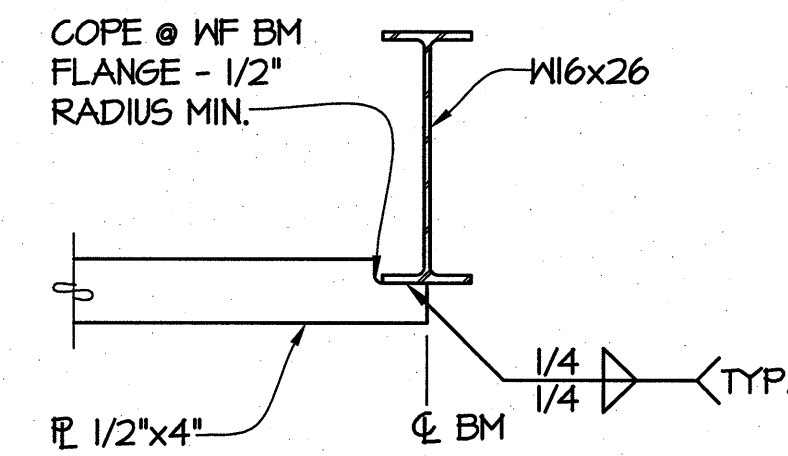
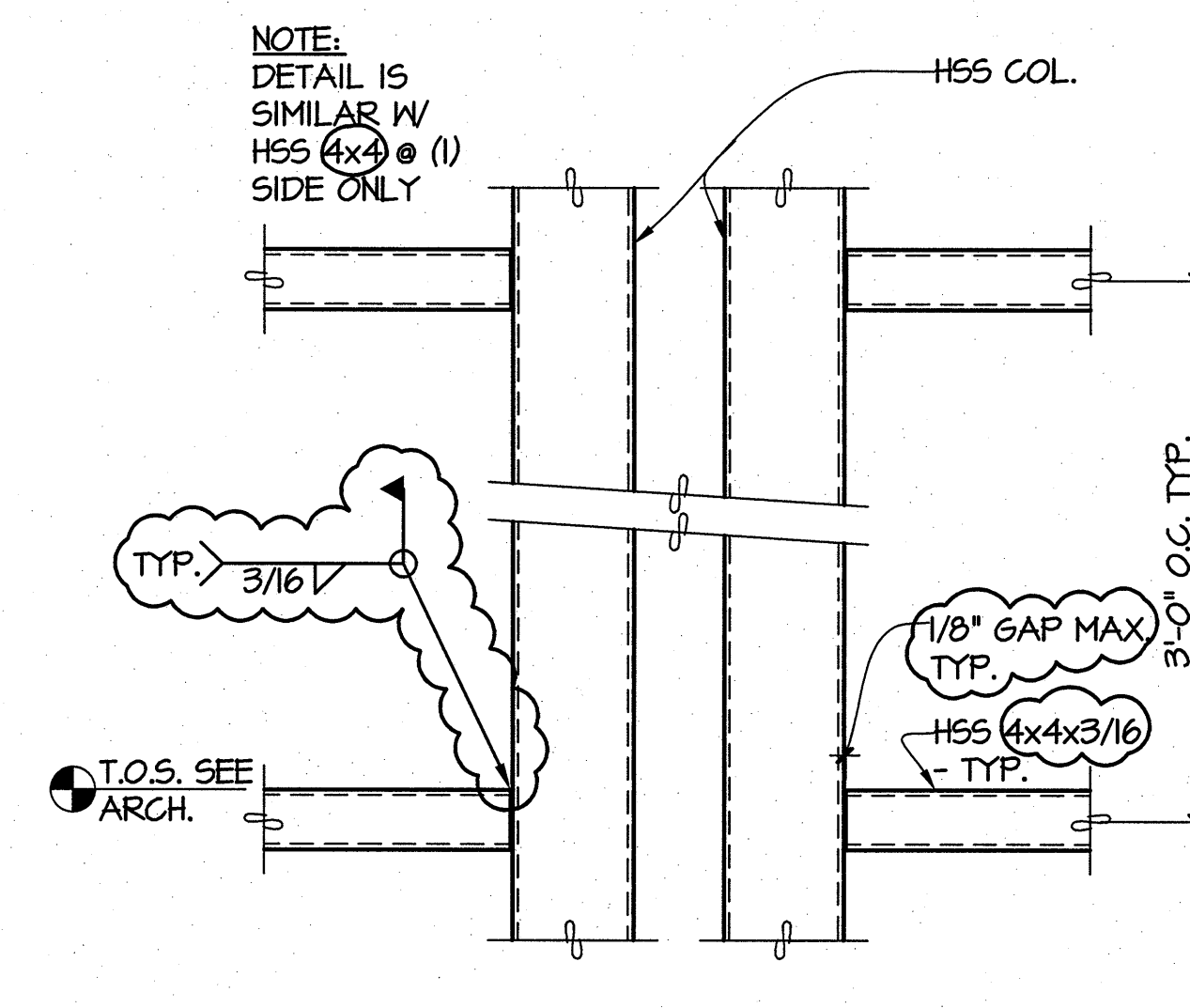


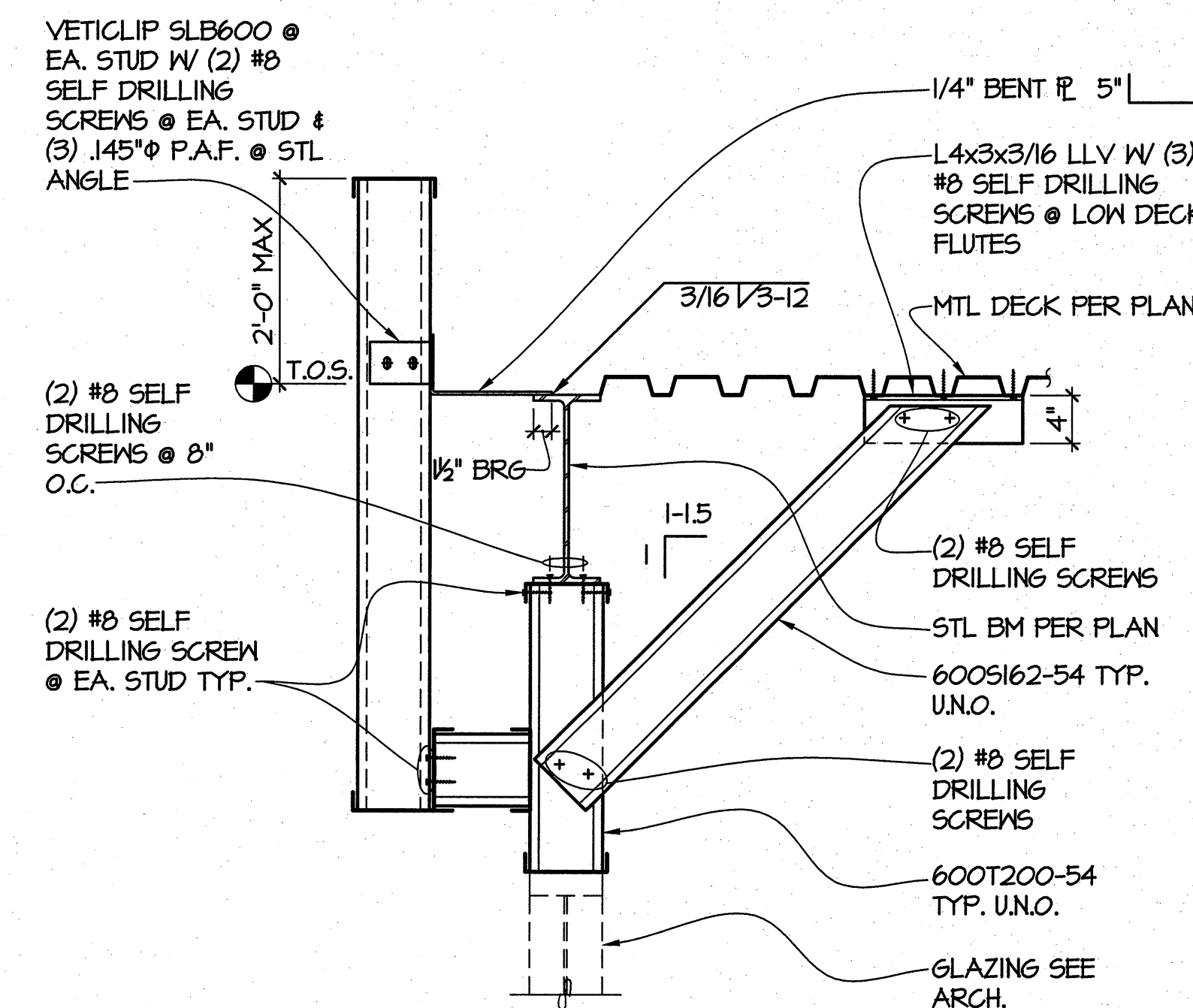
1 PARTIAL PLAN
54.61 NO SCALE



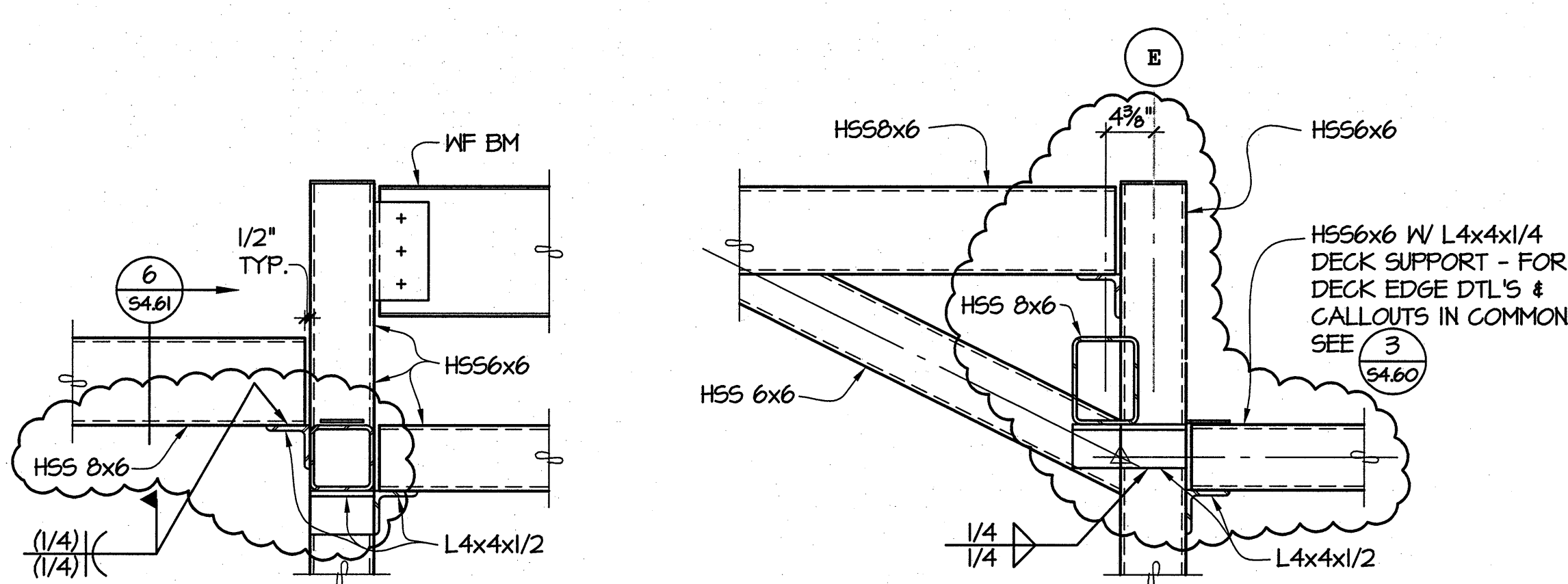
2 SECTION
54.61 1\"/>



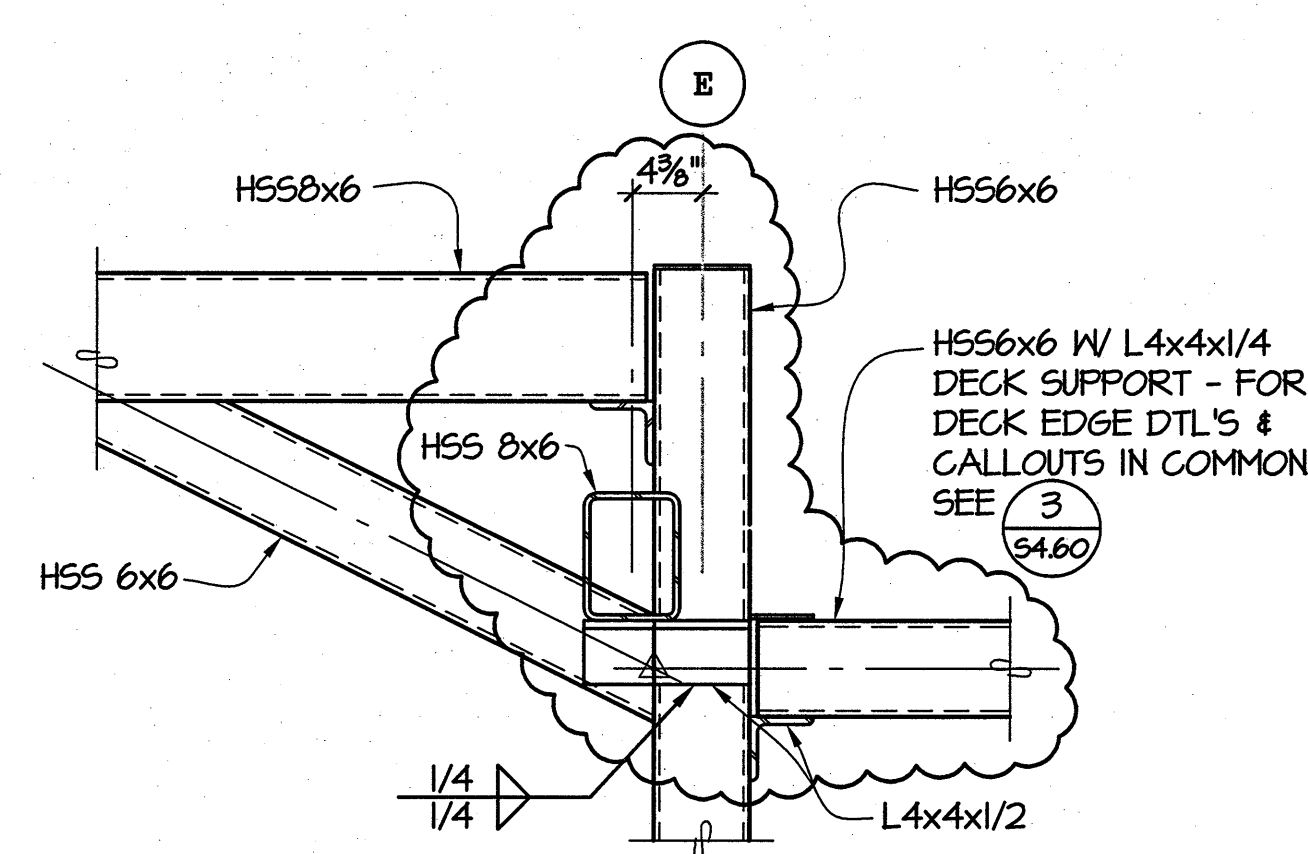
3 SECTION
54.61 1\"/>



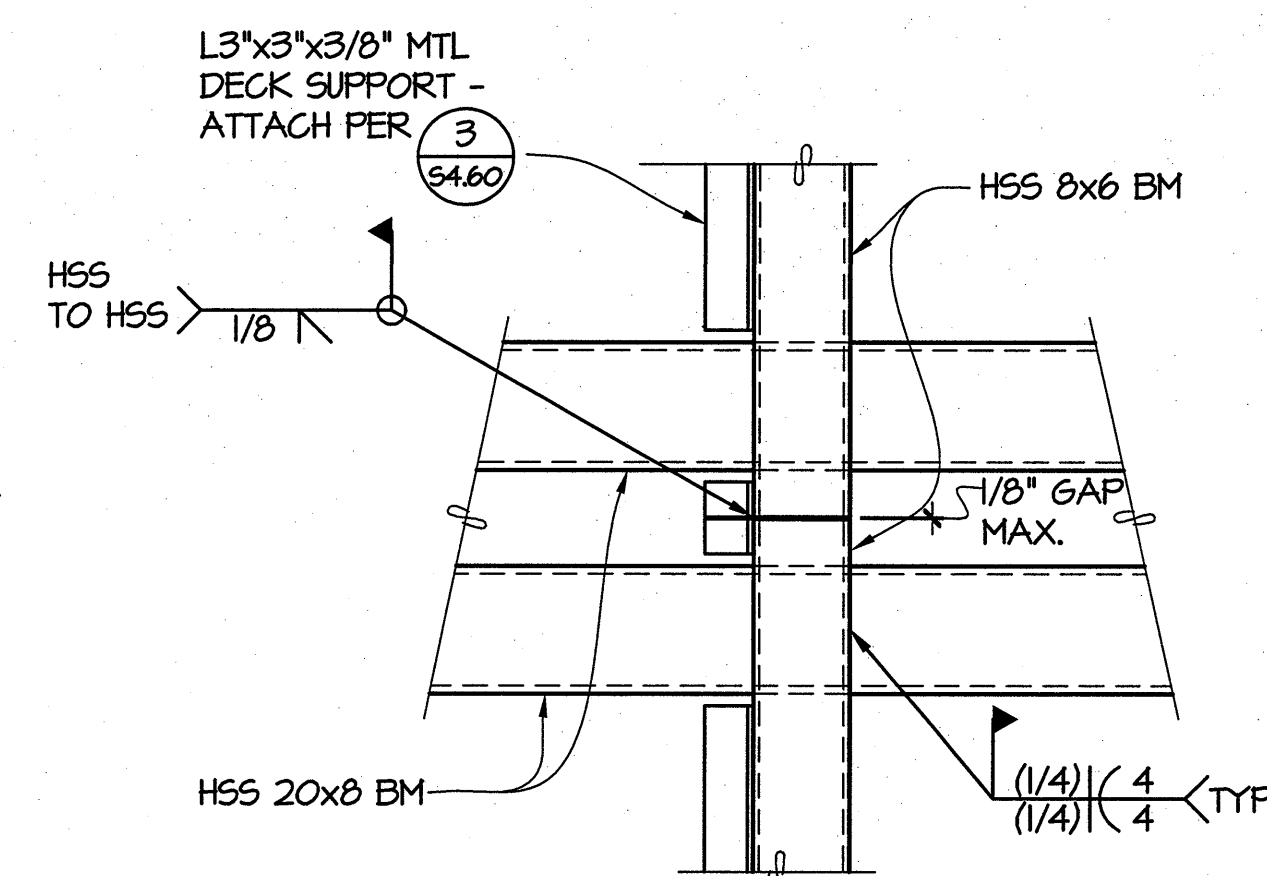
4 SECTION
54.61 1\"/>



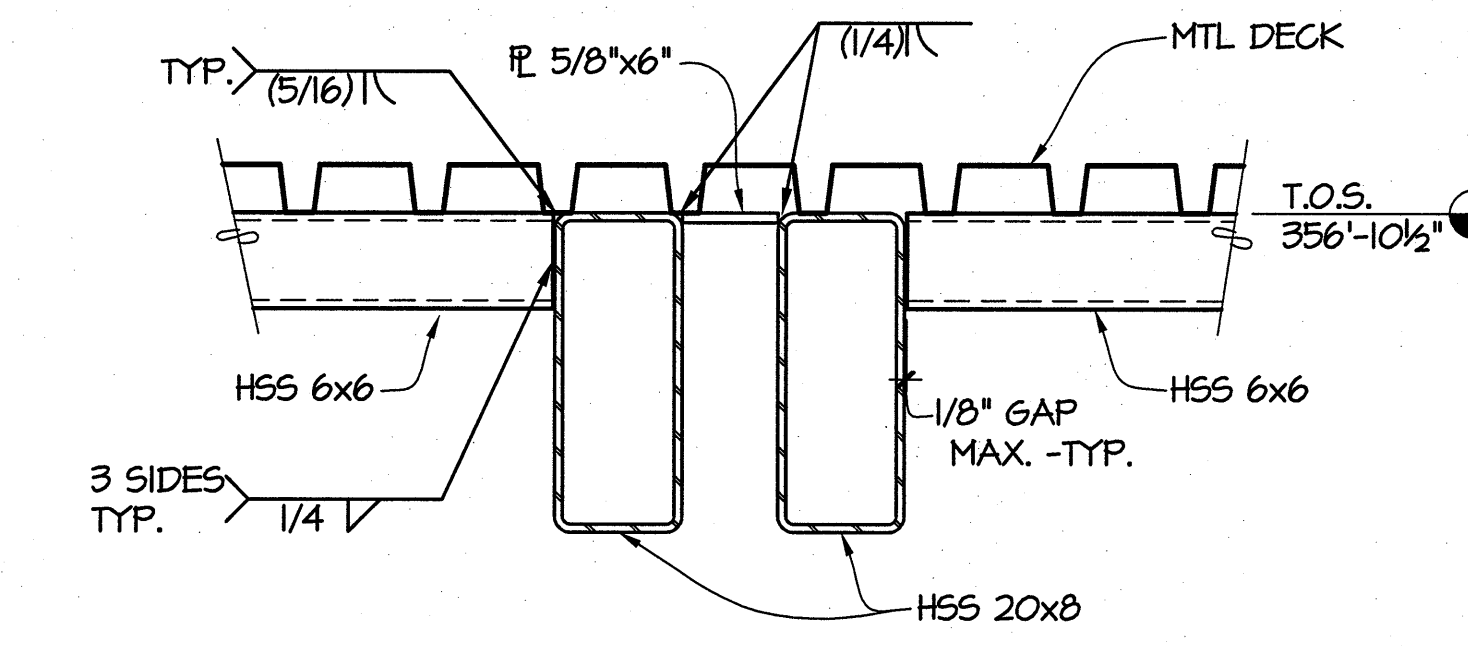
5 SECTION
54.61 1\"/>



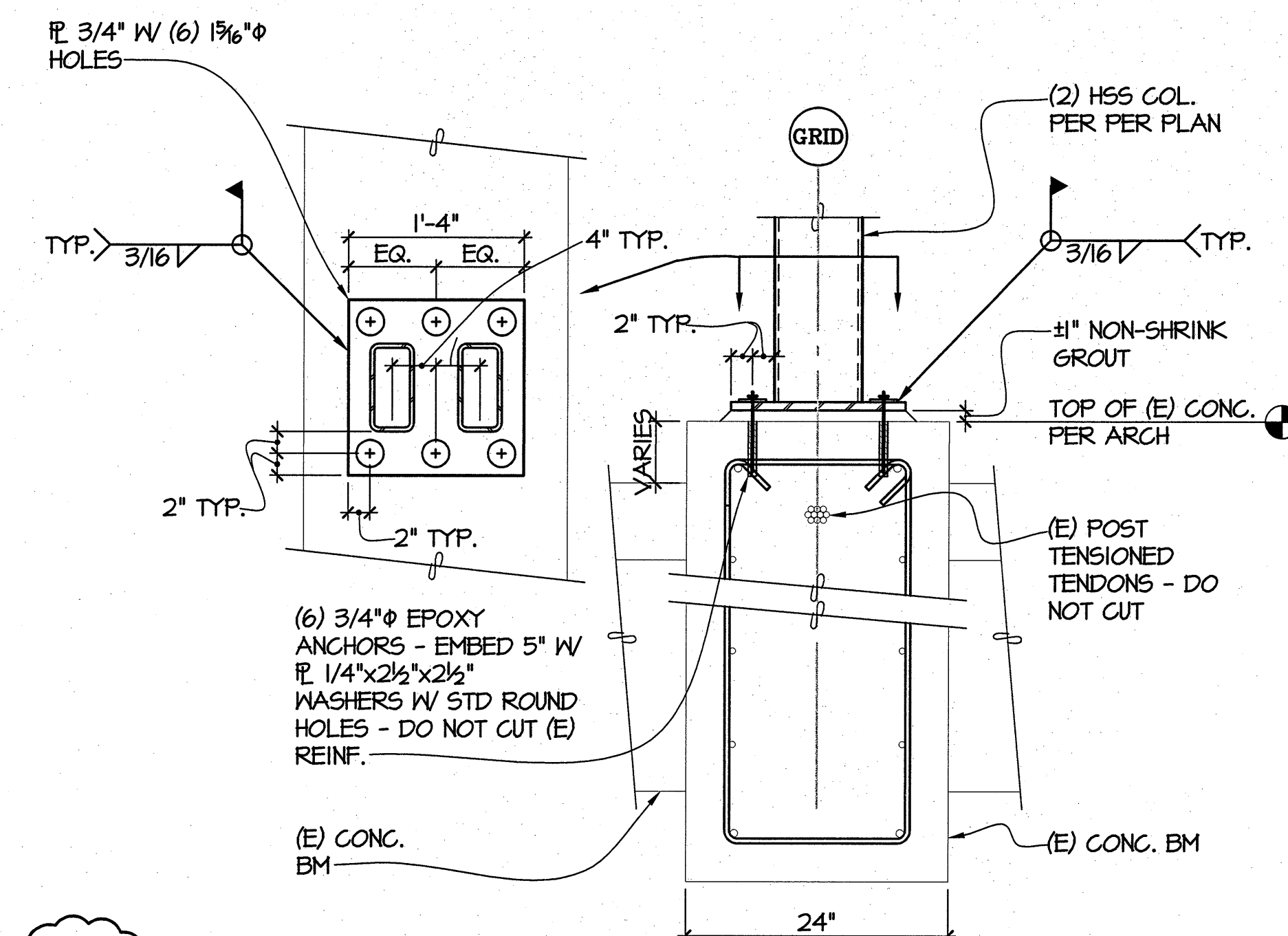
6 SECTION
54.61 1\"/>



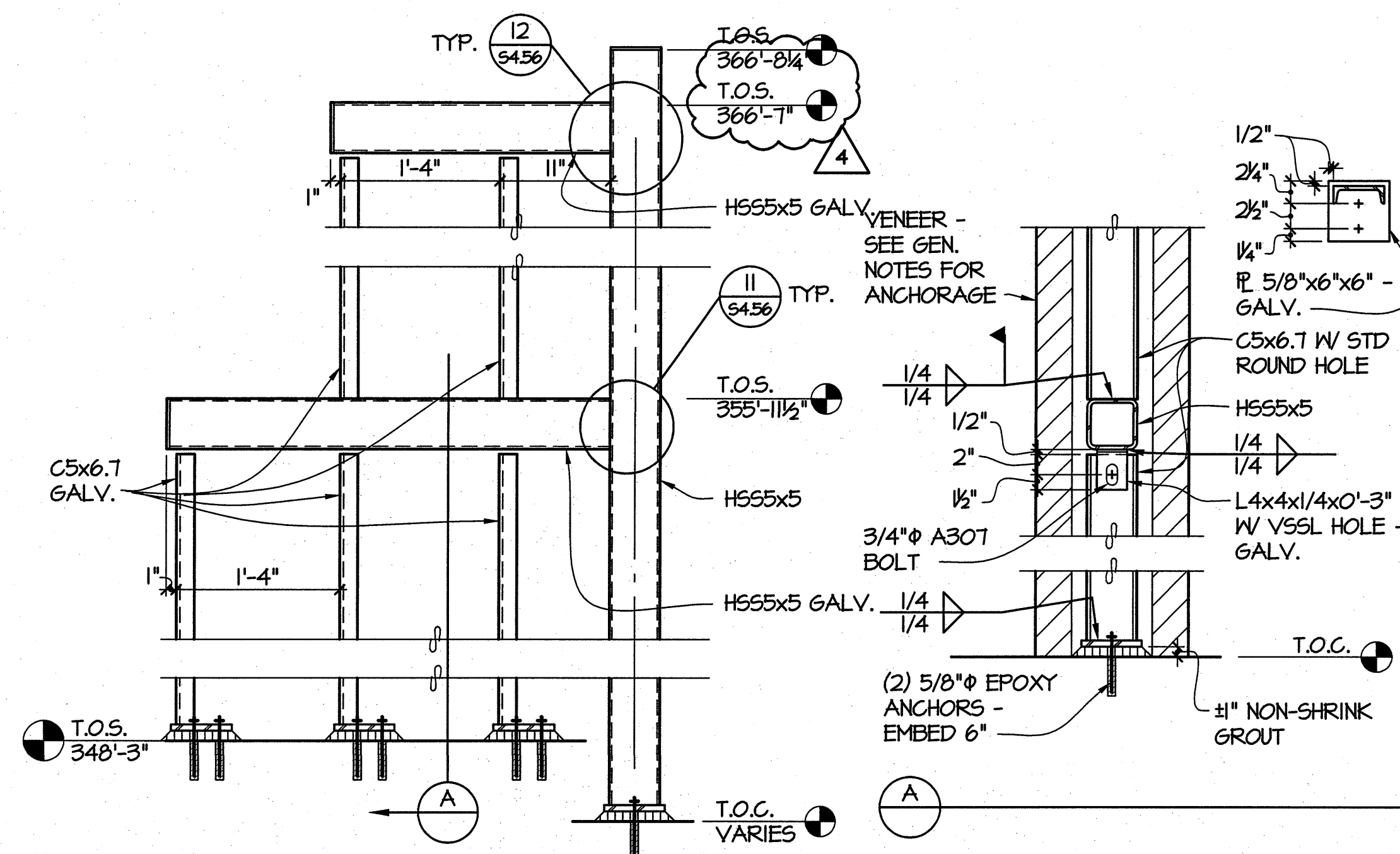
7 PLAN DETAIL
54.61 1\"/>



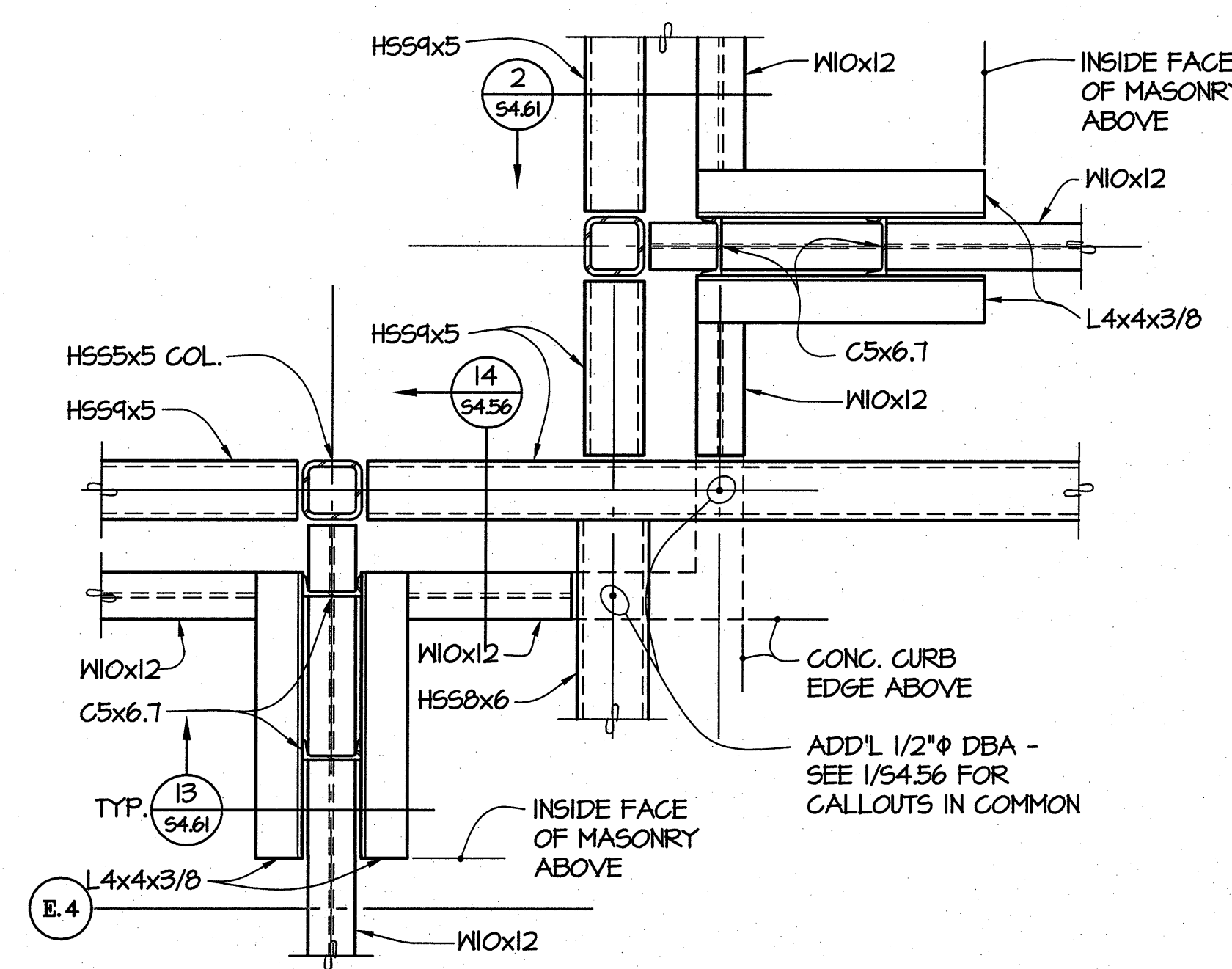
8 PLAN DETAIL
54.61 1\"/>



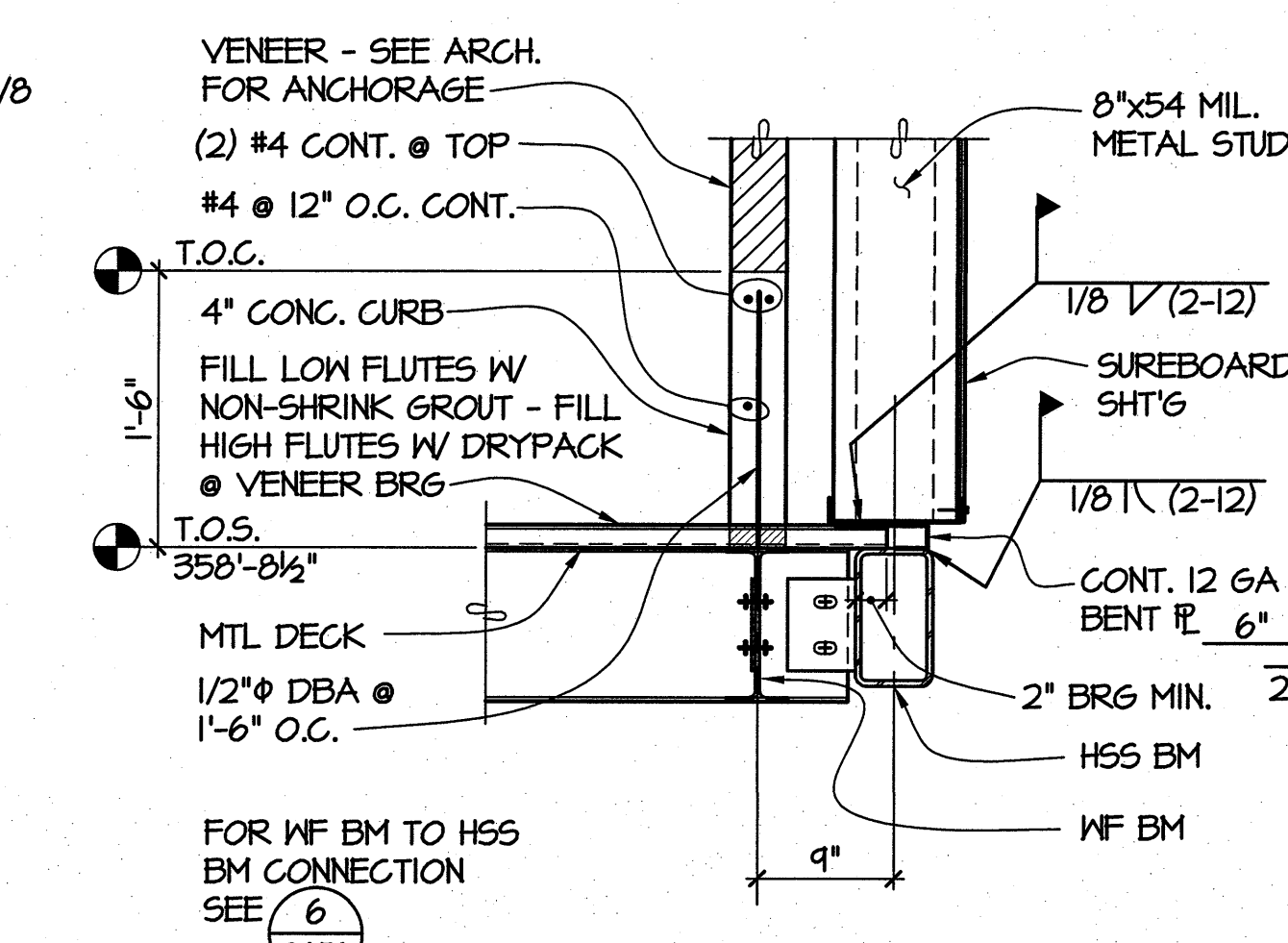
9 SECTION
54.61 NO SCALE



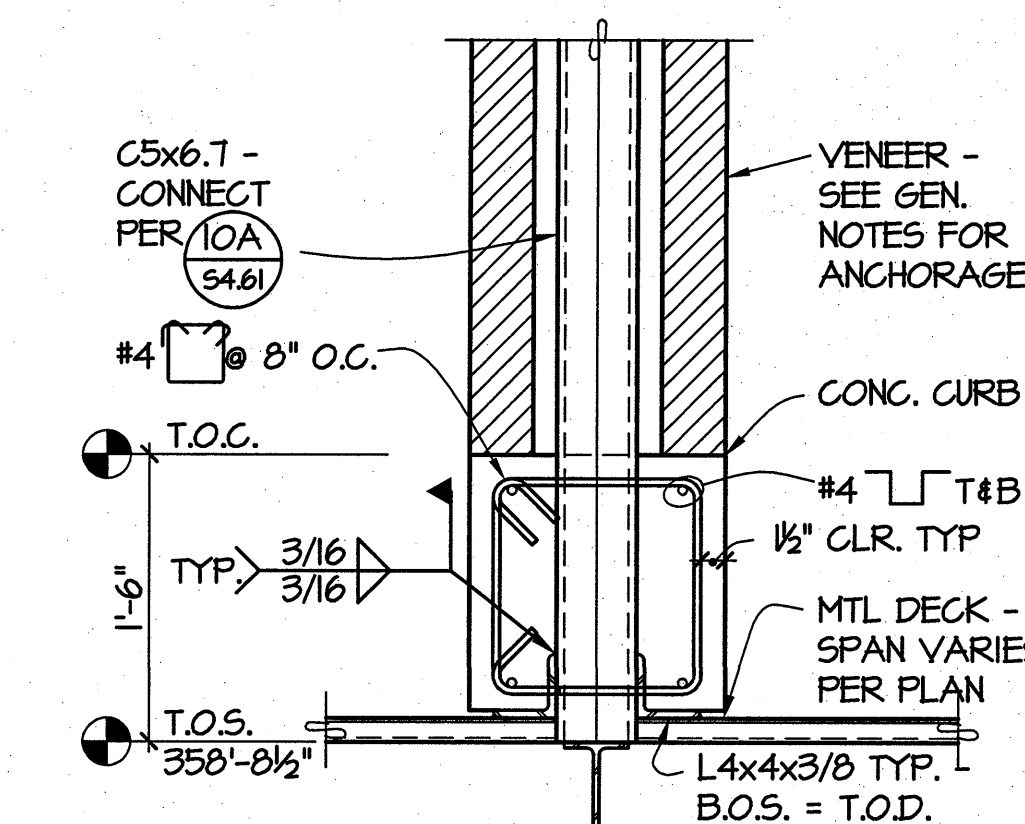
10 DETAIL
54.61 1\"/>



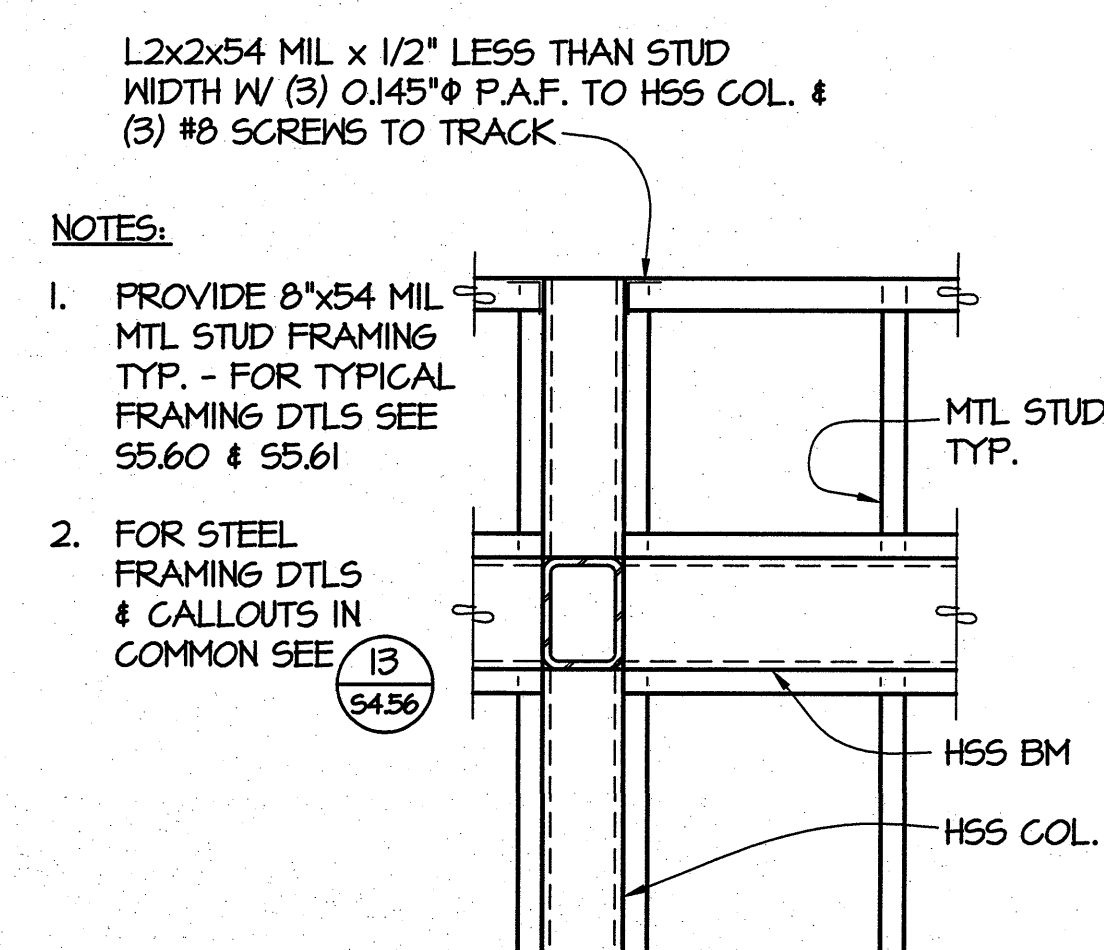
11 SECTION
54.61 1\"/>



12 SECTION
54.61 1\"/>



13 SECTION
54.61 1\"/>

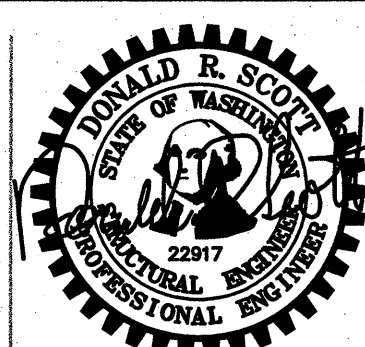


14 SECTION
54.61 1\"/>



GIFFIN • BOLTE • JURGENS
ARCHITECTS

815 S.W. SECOND AVENUE - PORTLAND, OREGON 97204
(503) 223-0992 www.gbjarch.com FAX (503) 294-3961



MultiCare

EMERGENCY DEPARTMENT & CANCER CENTER EXPANSION

TACOMA, WASHINGTON

REVISION	DESCRIPTION	DATE
1	CCD #1	11-12-08
2	CCD #2	12-03-08
3	CCD #5	01-21-09
4	CCD #7	02-20-09

Date 09-26-2008
Scale NO SCALE
Drawn By DGC
Job No. 4034

**CANOPY
DETAILS**

**S4
61**