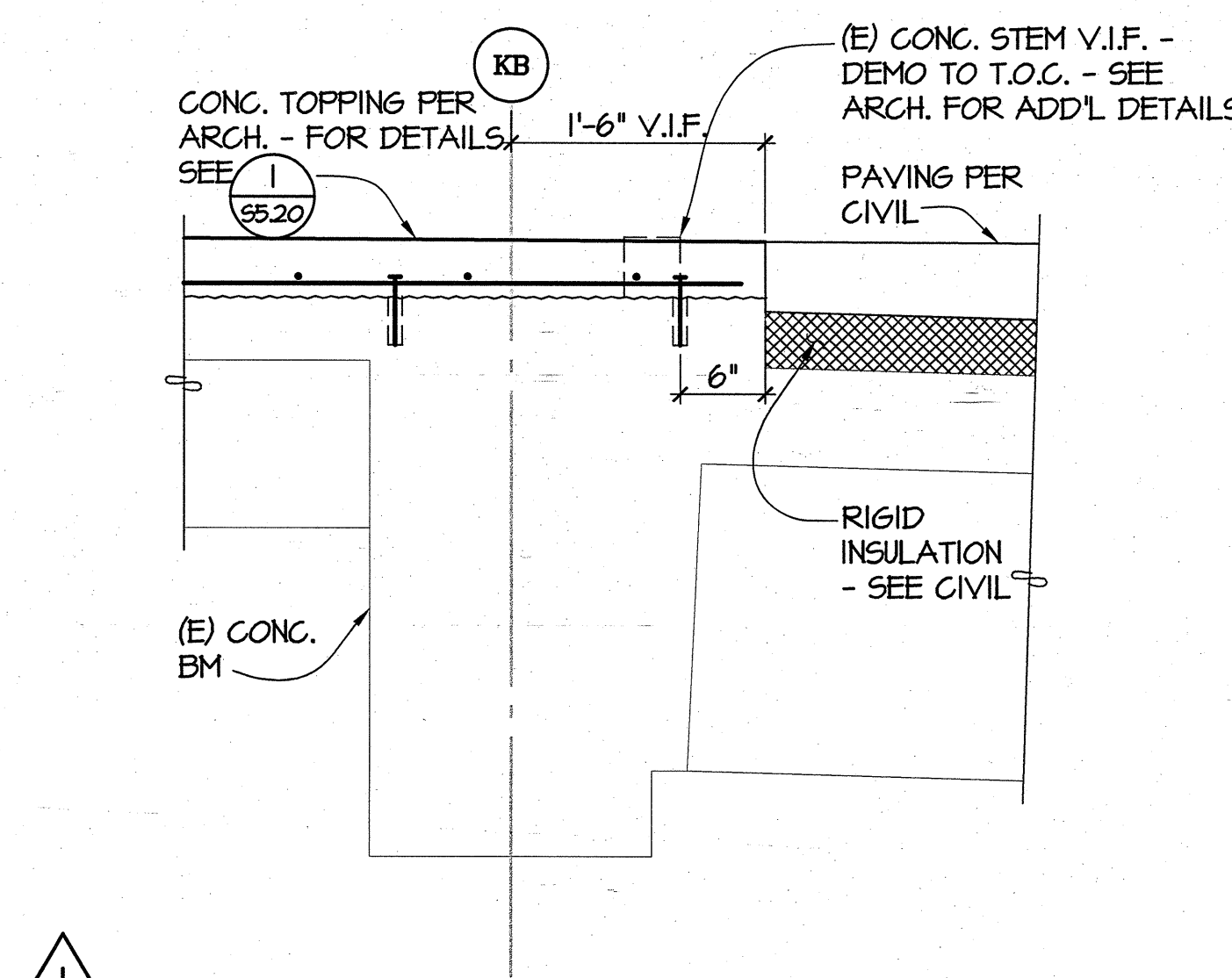
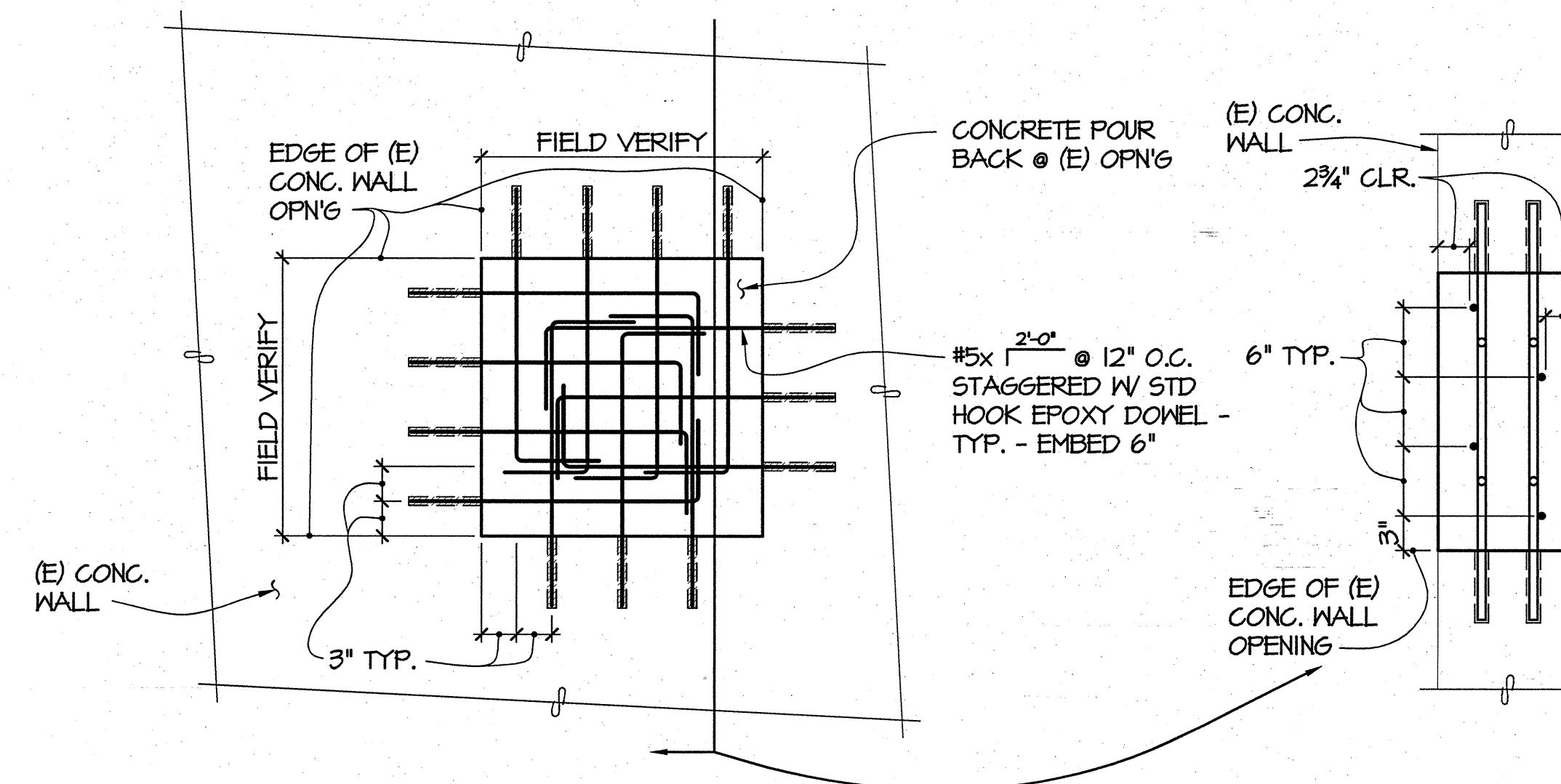


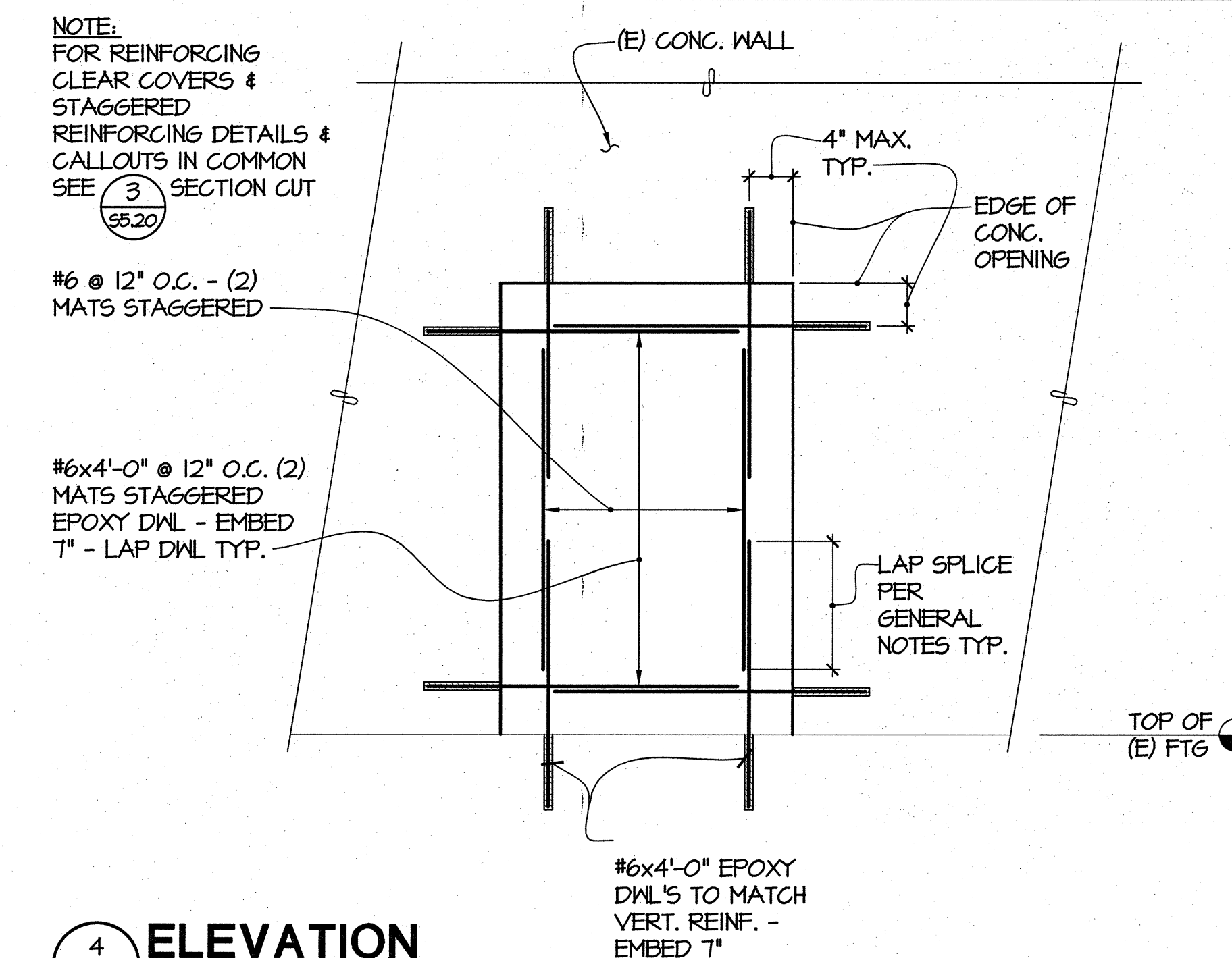
1 SECTION
55.20 1"=1'-0"



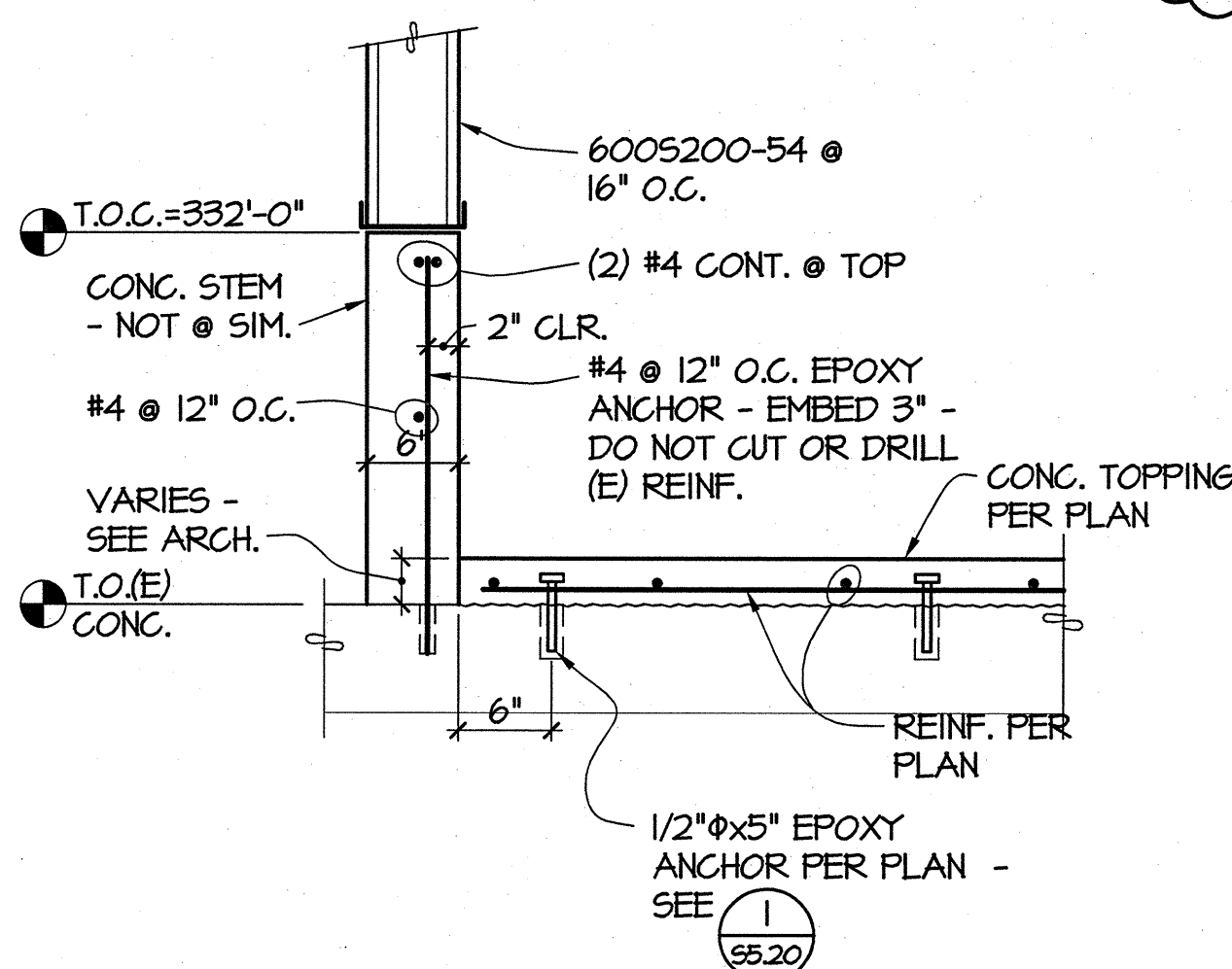
2 SECTION
55.20 1"=1'-0"



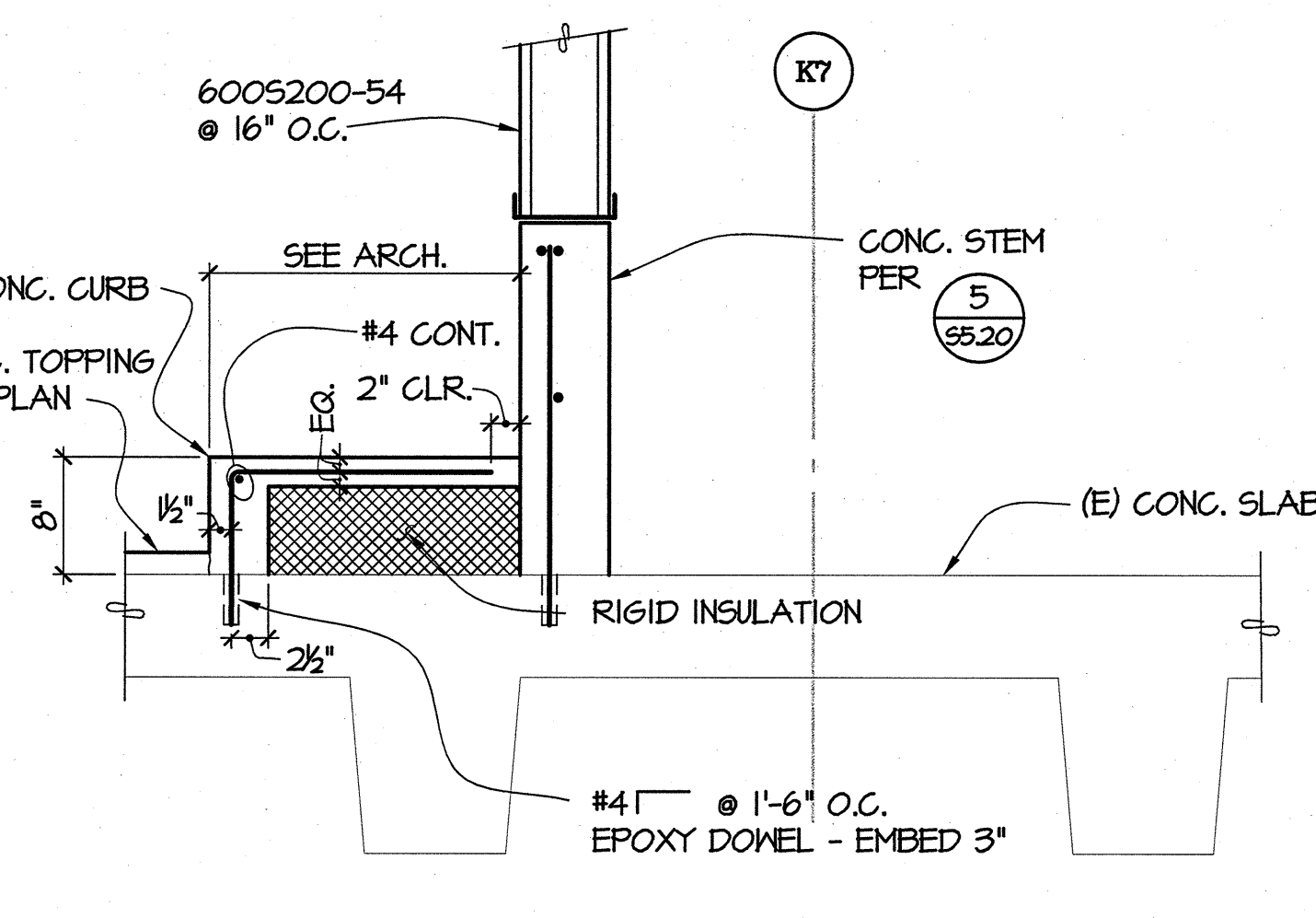
3 DETAIL
55.20 1"=1'-0"



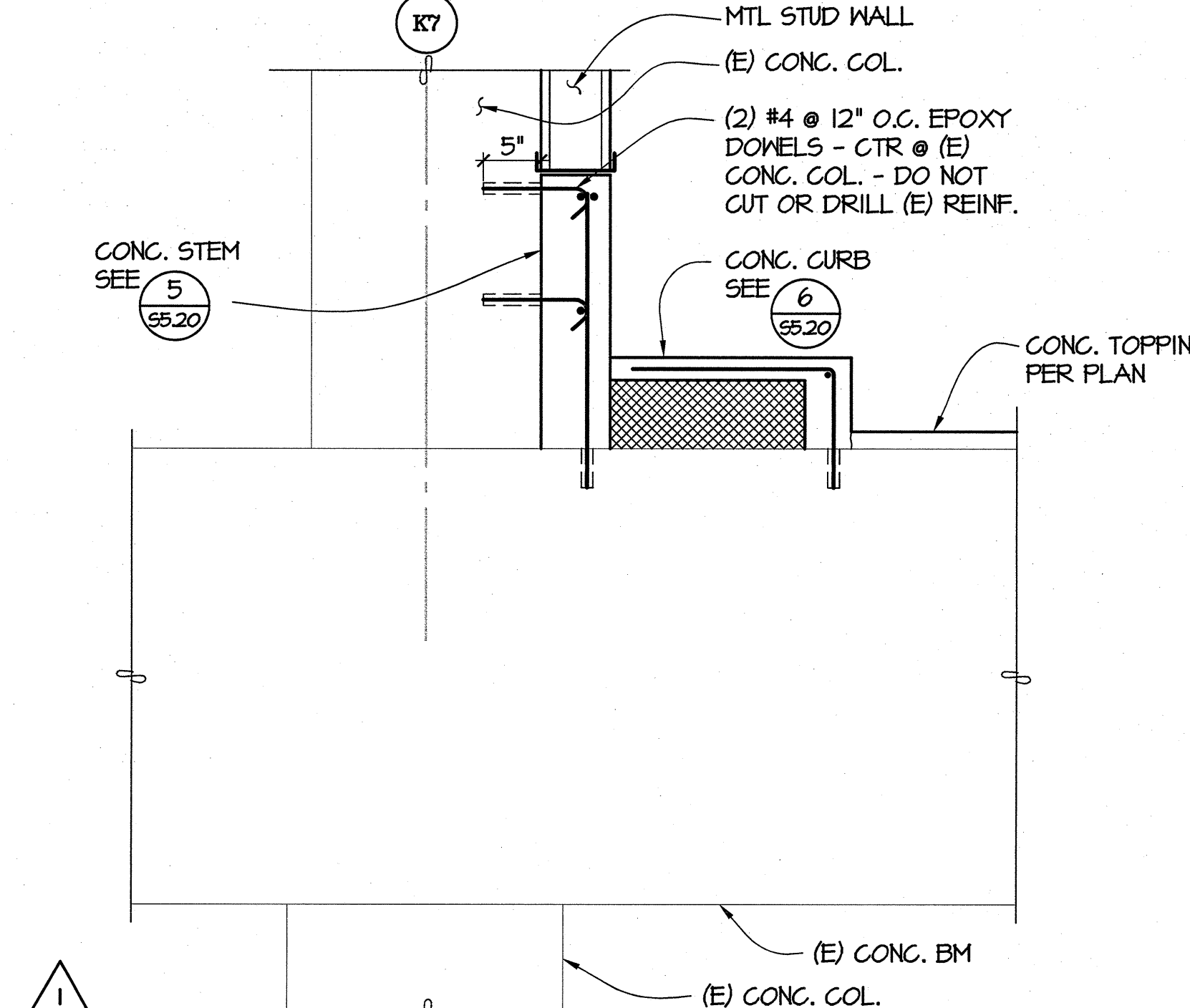
4 ELEVATION
55.20 NO SCALE



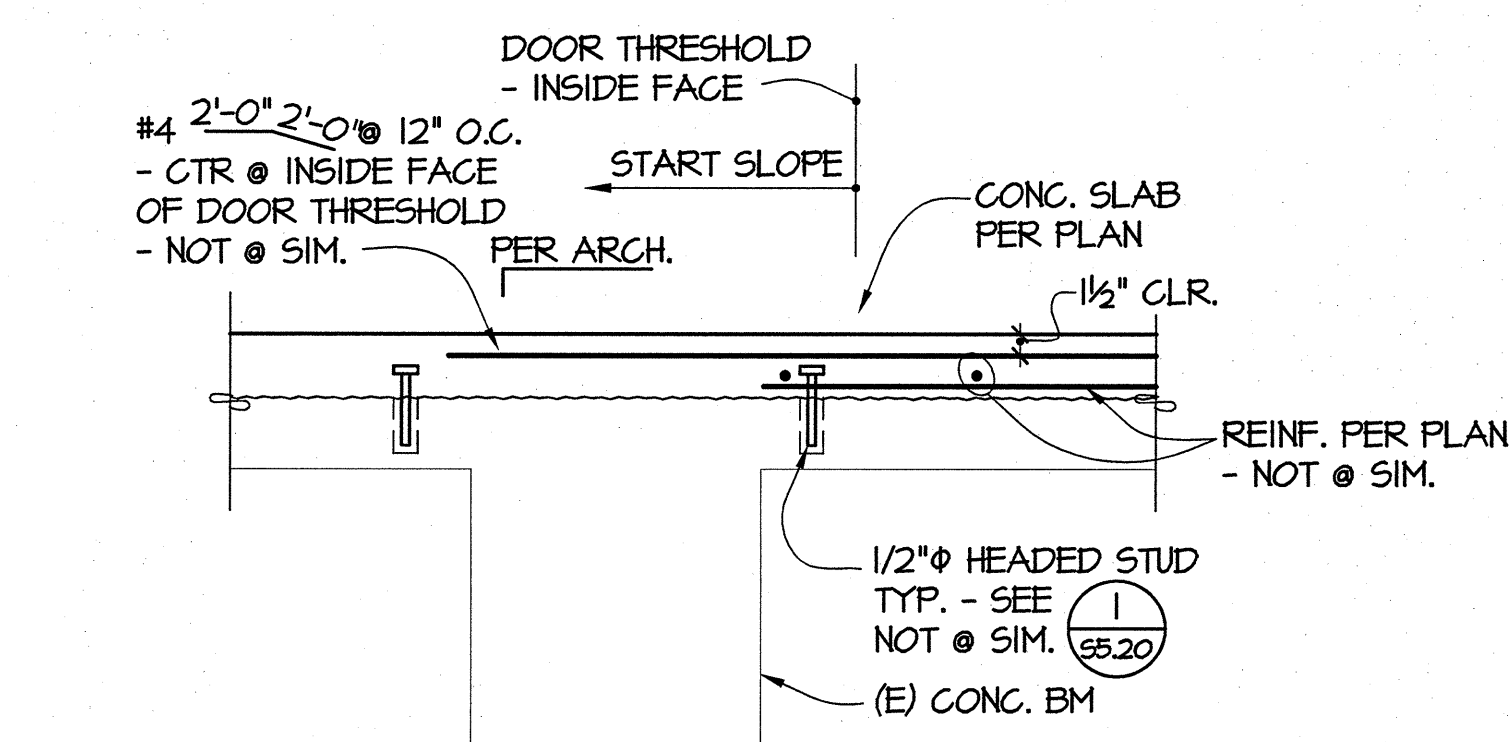
5 SECTION
55.20 1"=1'-0"



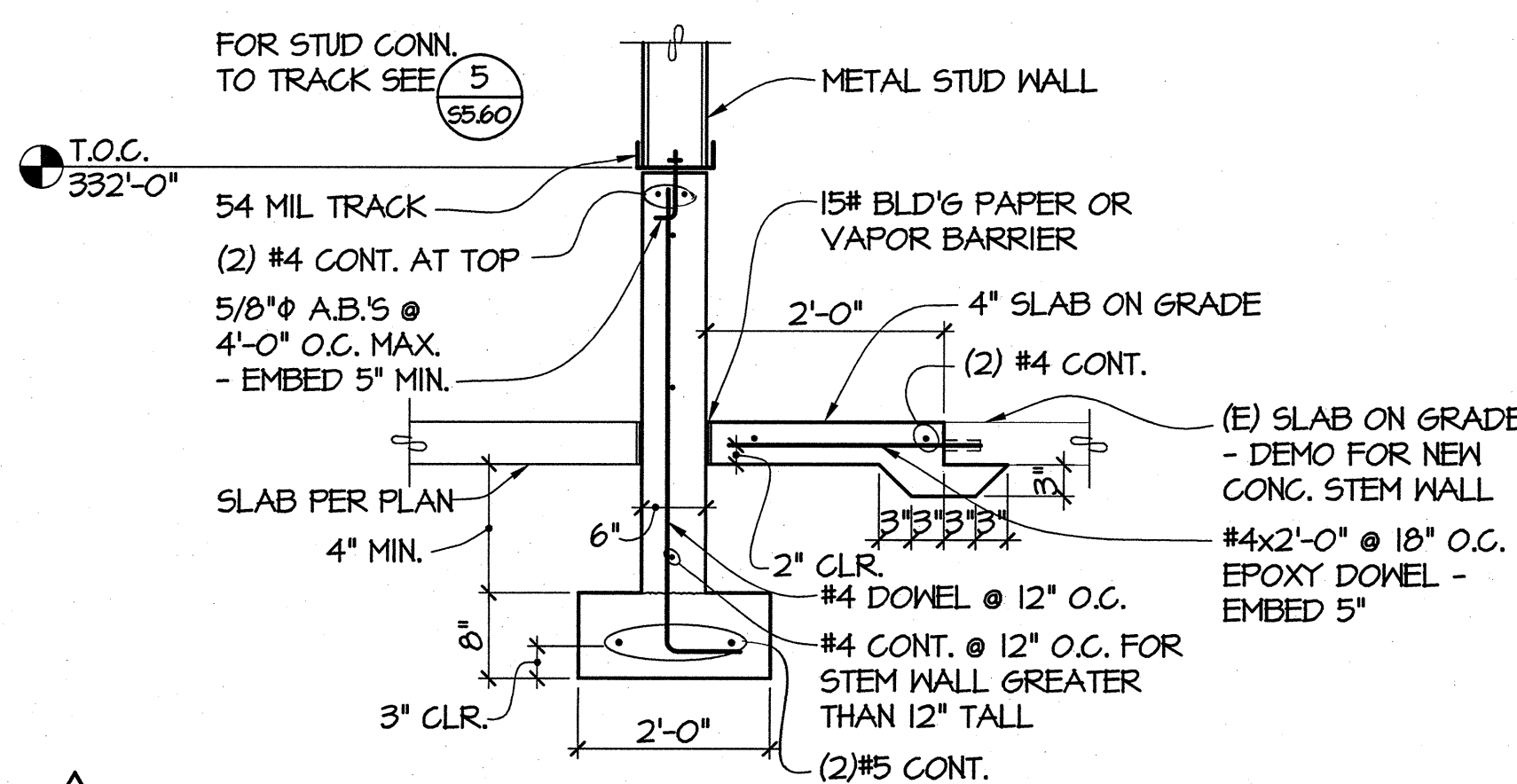
6 SECTION
55.20 1"=1'-0"



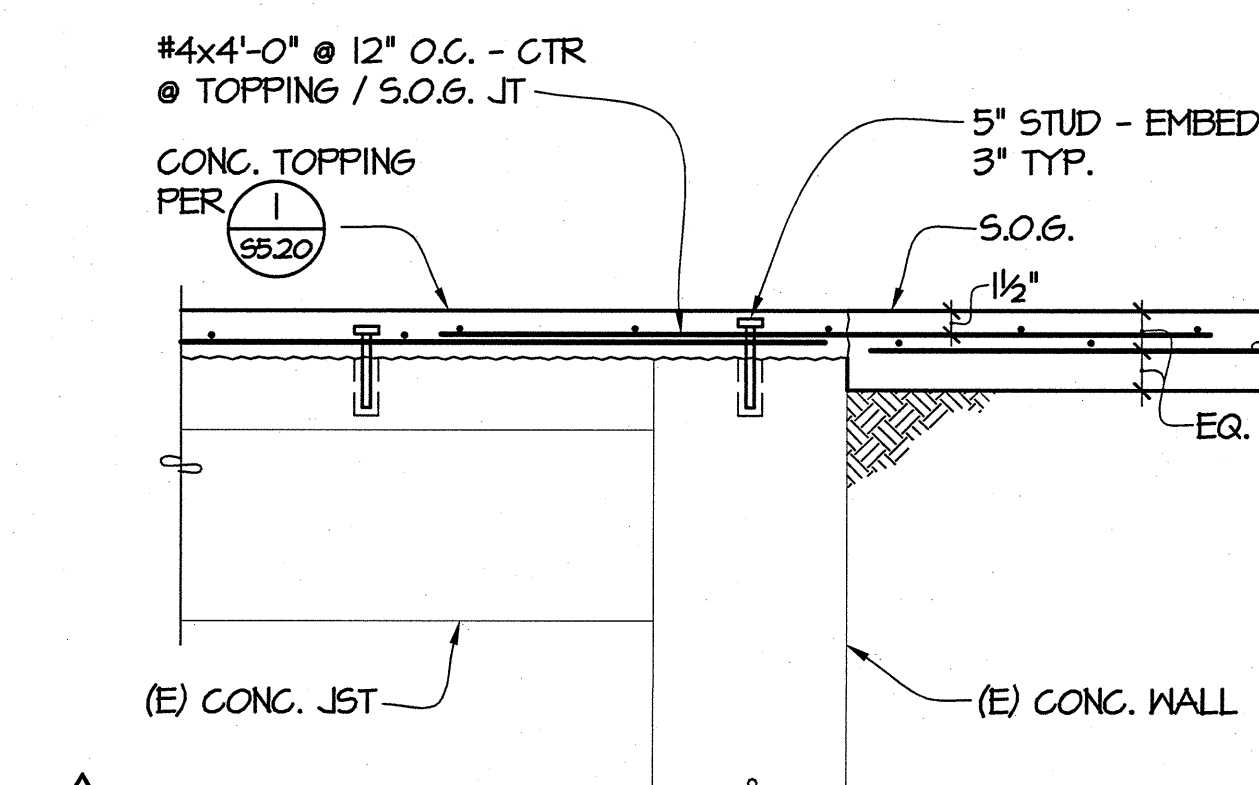
7 SECTION
55.20 1"=1'-0"



8 SECTION
55.20 1"=1'-0"



9 SECTION
55.20 NO SCALE



10 SECTION
55.20 1"=1'-0"

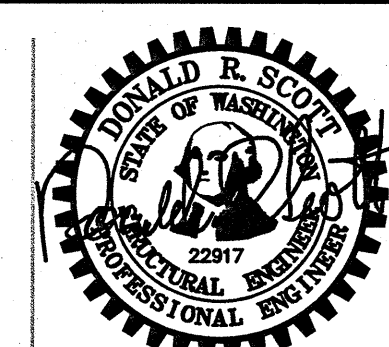


811 West Avenue, Suite 620
Tacoma, Washington 98404
Tel: 253.266.1270

800 Pacific Avenue, Suite 1100
Tacoma, Washington 98402
Tel: 253.266.1270

GIFFIN • BOLTE • JURGENS
ARCHITECTS

815 S.W. SECOND AVENUE • PORTLAND, OREGON 97204
(503) 223-0992 www.gbjarch.com FAX (503) 294-3961



MultiCare

EMERGENCY DEPARTMENT & CANCER CENTER EXPANSION

TACOMA, WASHINGTON

REVISION	DESCRIPTION	DATE
1	CCD #5	01-21-04

Date 09-26-2008
Scale AS NOTED
Drawn By DGC
Job No. 4034

K-WING
RETROFIT
CONCRETE DETAILS

S5
20