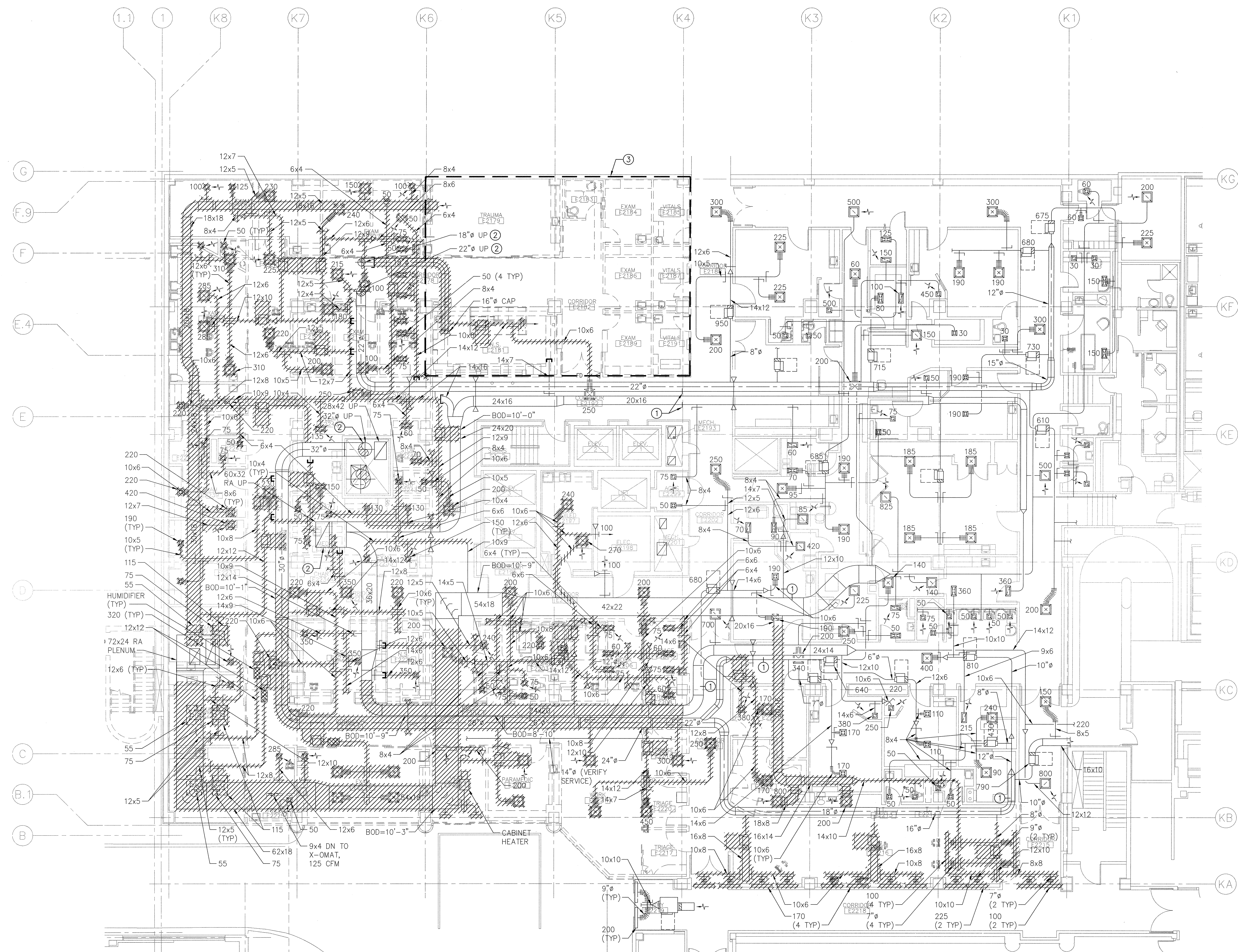
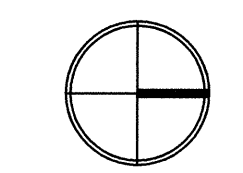


1 2 3 4 5 6 7



2ND FLOOR PLAN - K WING REMODEL - HVAC DEMOLITION
SCALE: 1/8"=1'-0"

- GENERAL NOTES:**
- AIR FLOWS FOR EXISTING TERMINAL UNITS INDICATED.
- KEY NOTES:**
- AIR BALANCE CONTRACTOR TO TAKE AIRFLOW READINGS PRIOR TO DEMOLITION.
 - AIR BALANCE CONTRACTOR TO SUBMIT COMPLETE FAN DATA ON EXISTING FANS, SF-2, RF-1, EF-5, PRIOR TO DEMOLITION.
 - DEMOLISH EXISTING HVAC IN THIS AREA.



GIFFIN • BOLTE • JURGENS, p.c.
ARCHITECTS
815 S.W. SECOND AVENUE, PORTLAND, OREGON 97204
(503) 223-0992 www.gbjarch.com FAX (503) 294-3961

CDI ENGINEERS
4200 - 194th St SW, Suite 200
Lynnwood, WA 98036
T 425.672.1071 F 425.778.8768
www.CDIENGINEERS.com



MultiCare
EMERGENCY DEPARTMENT & CANCER CENTER EXPANSION
TACOMA, WASHINGTON

Date 09-26-2008
Scale 1/8"=1'-0"
Drawn By CDI
Job No. 4034

2ND FLOOR
PLAN - K WING
REMODEL -
HVAC DEMOLITION

M1
22