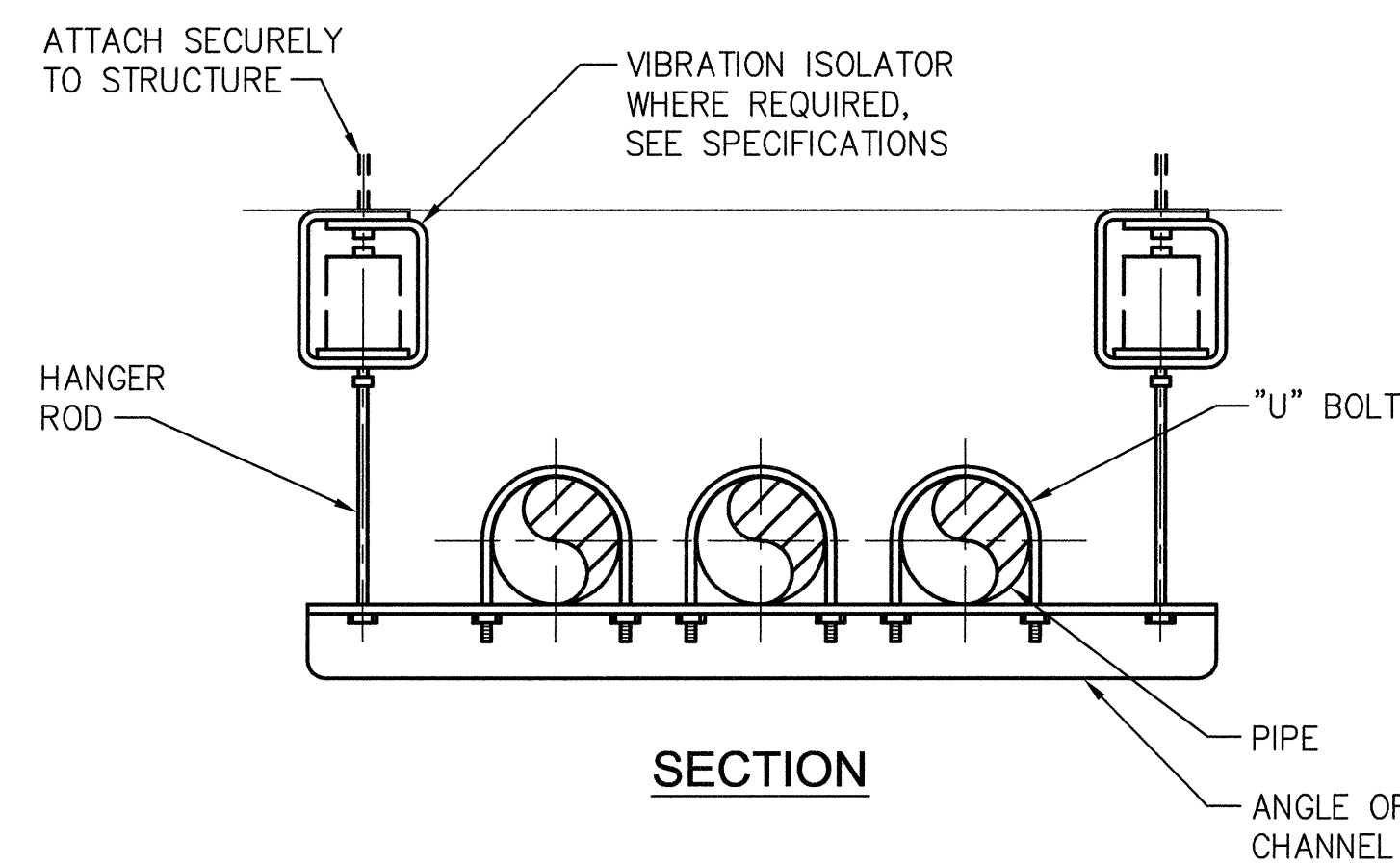


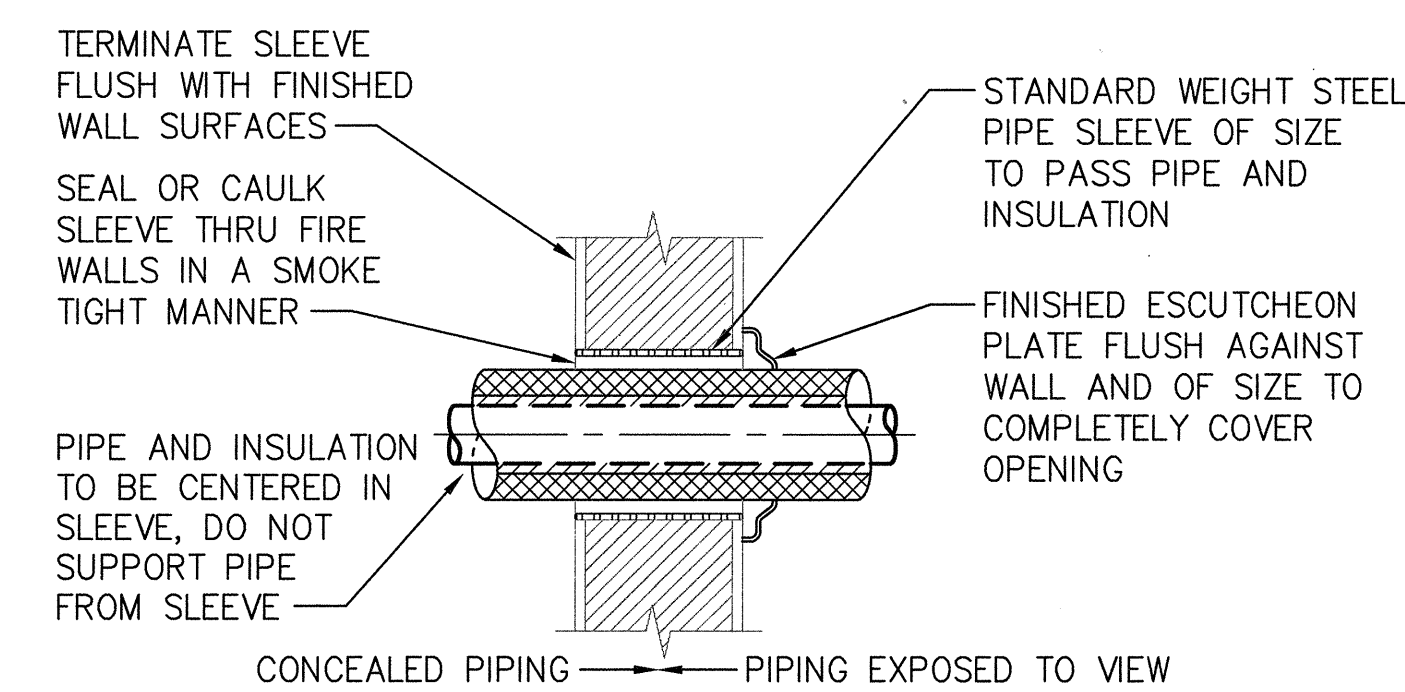
VENT THROUGH ROOF

SCALE: NONE



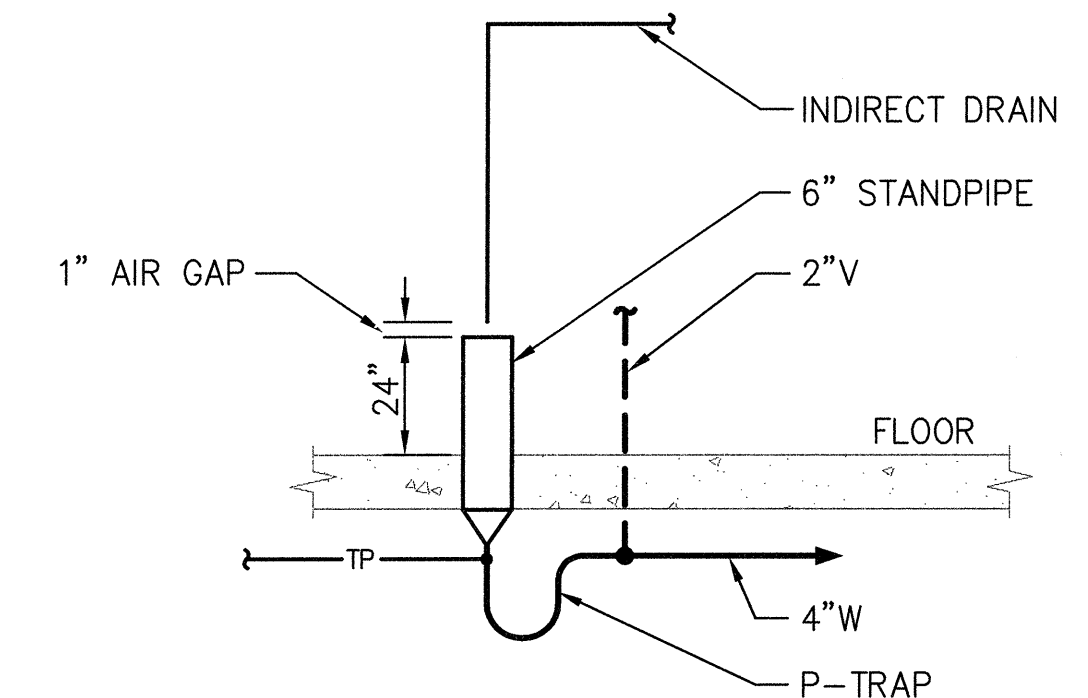
TRAPEZE PIPE HANGER

SCALE: NONE



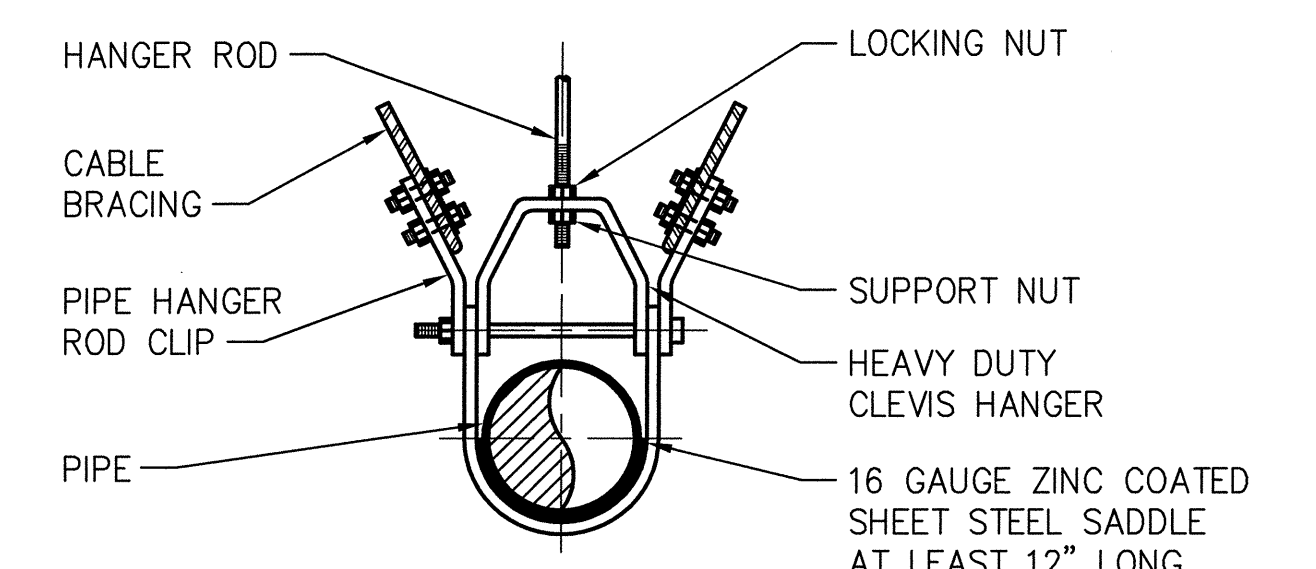
PIPE SLEEVE THROUGH WALL

SCALE: NONE

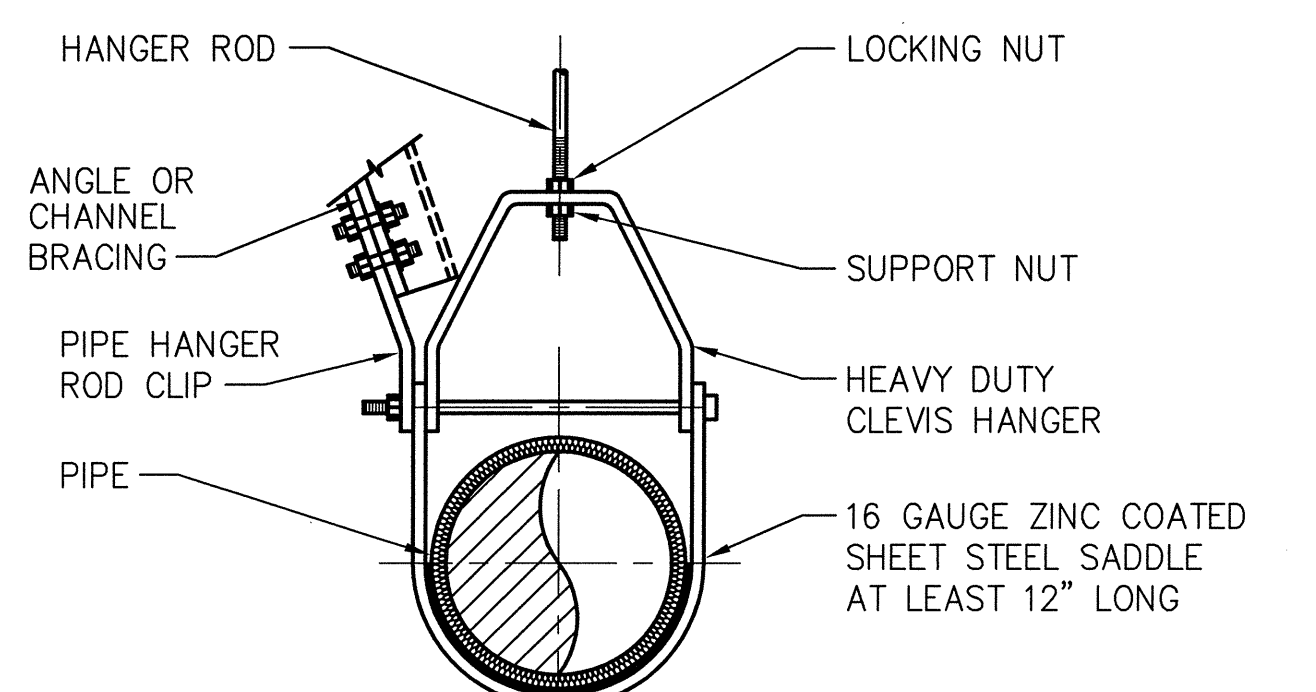


STANDPIPE DRAIN

SCALE: NONE



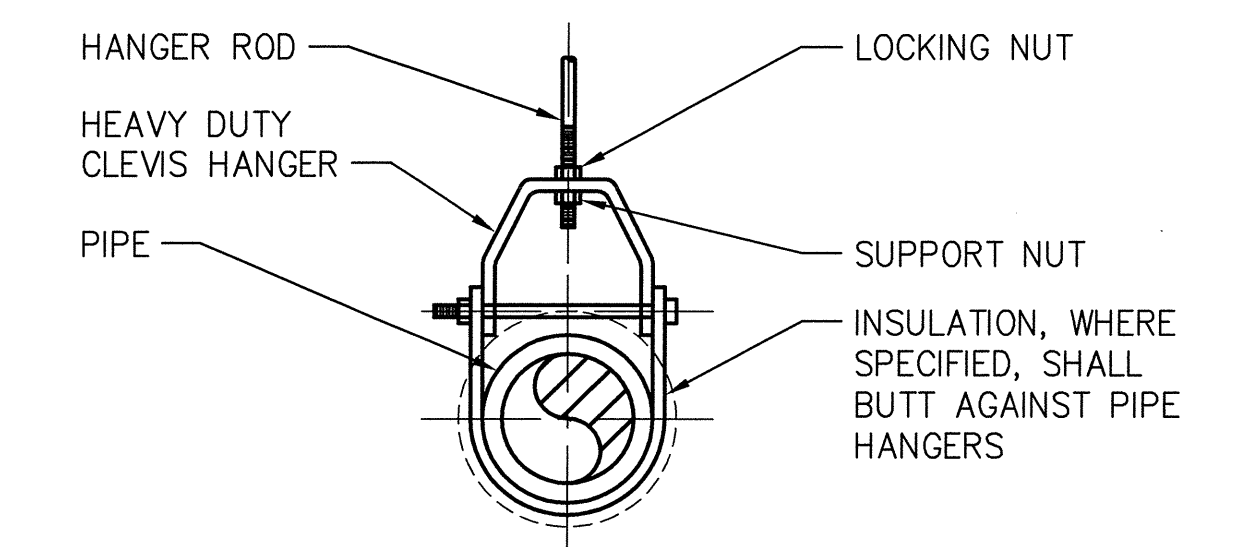
CLEVIS HANGER WITH CABLE BRACING



CLEVIS HANGER WITH RIGID BRACING

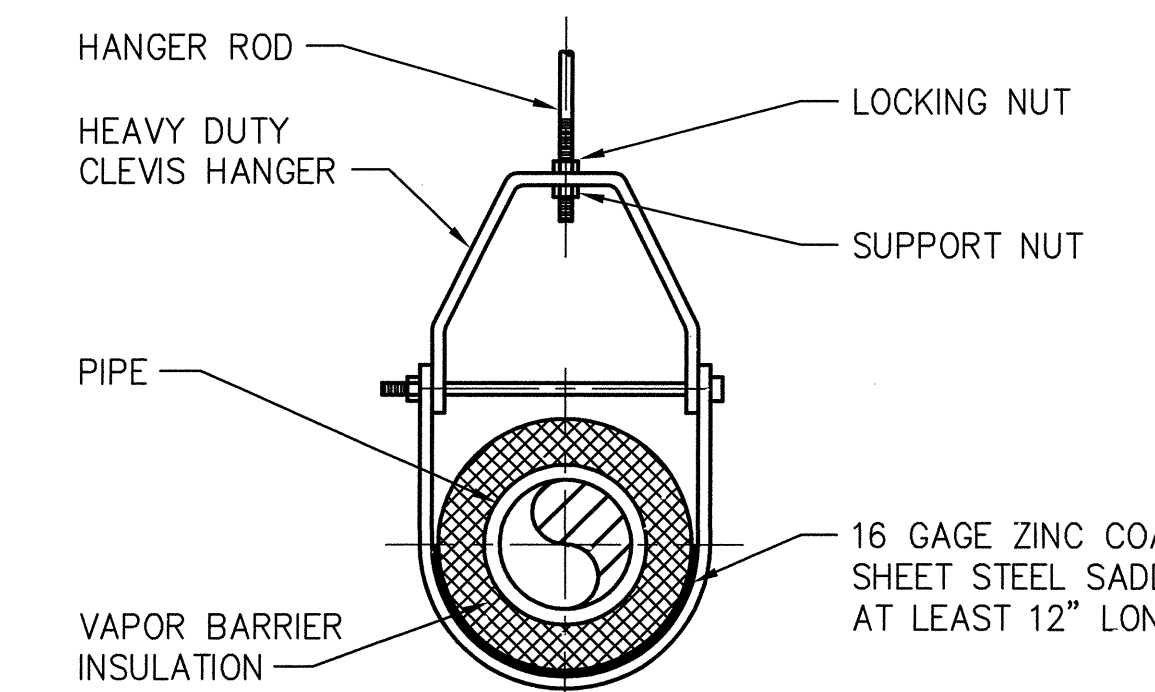
SEISMIC PIPE SUPPORTS

SCALE: NONE



CLEVIS HANGER

SINGLE HORIZONTAL RUNS, NO VAPOR BARRIER INSULATION

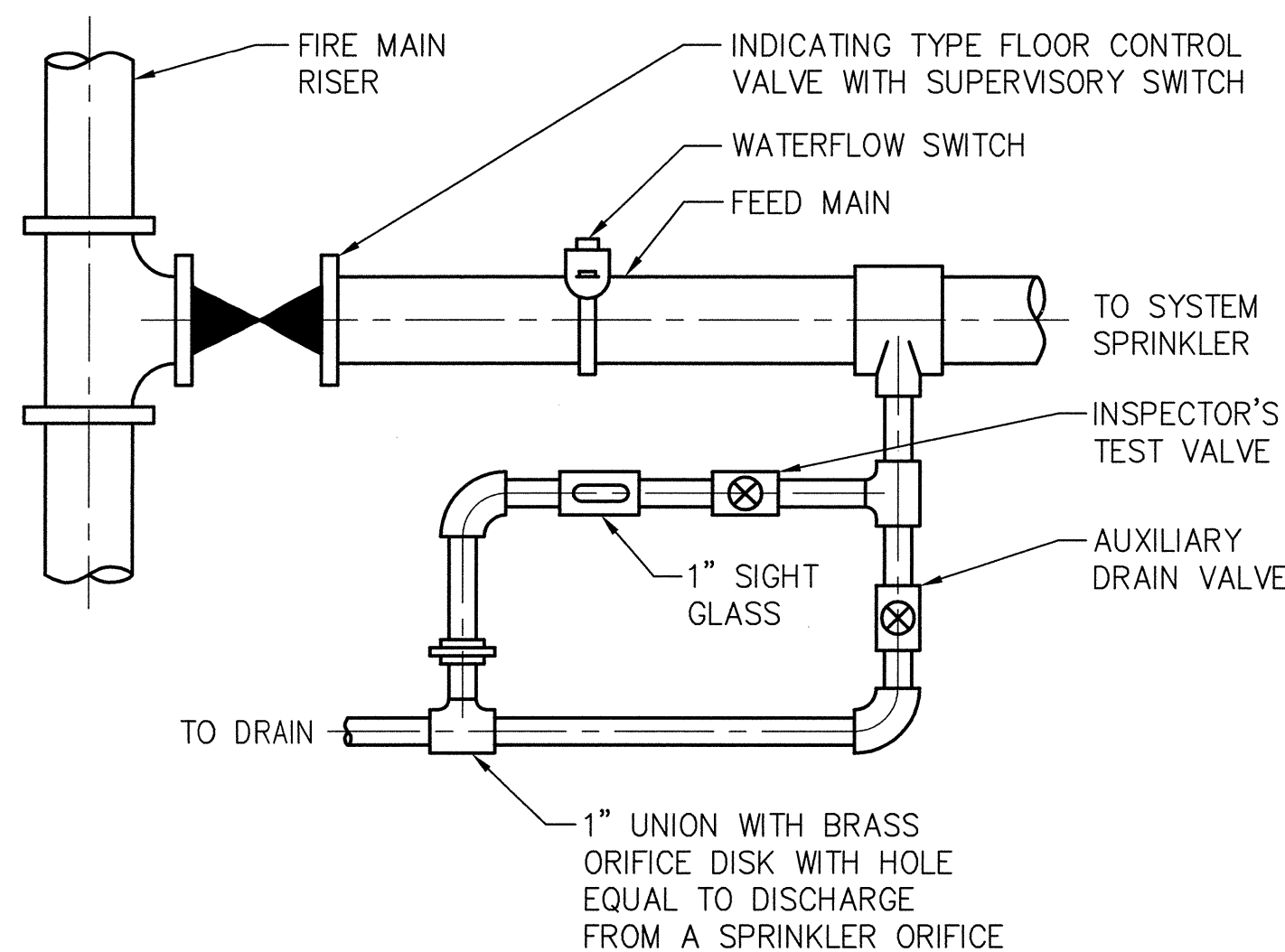


CLEVIS HANGER

SINGLE HORIZONTAL RUNS, VAPOR BARRIER INSULATION

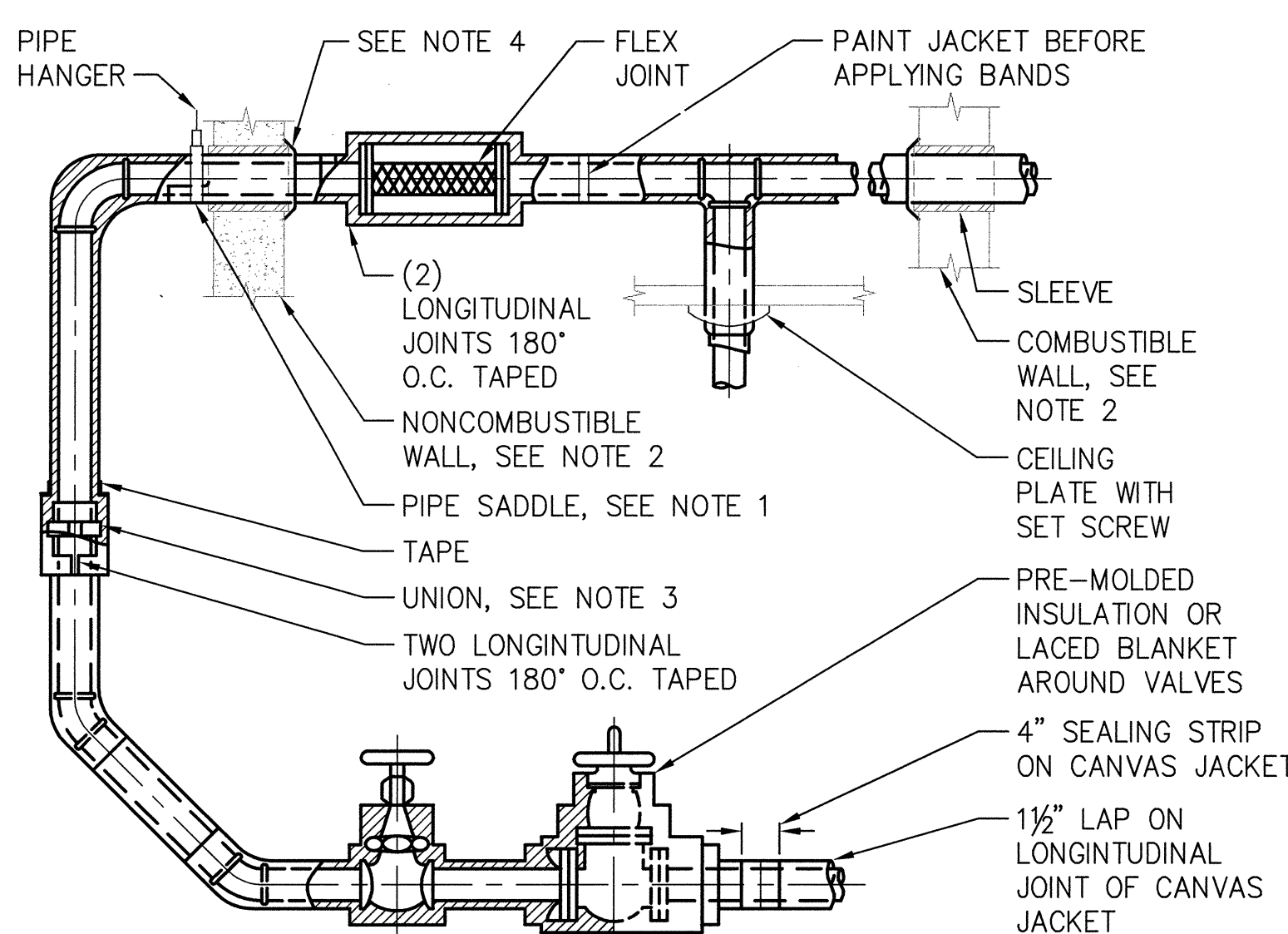
PIPE SUPPORTS

SCALE: NONE



SPRINKLER FLOOR CONTROL VALVE ASSEMBLY

SCALE: NONE

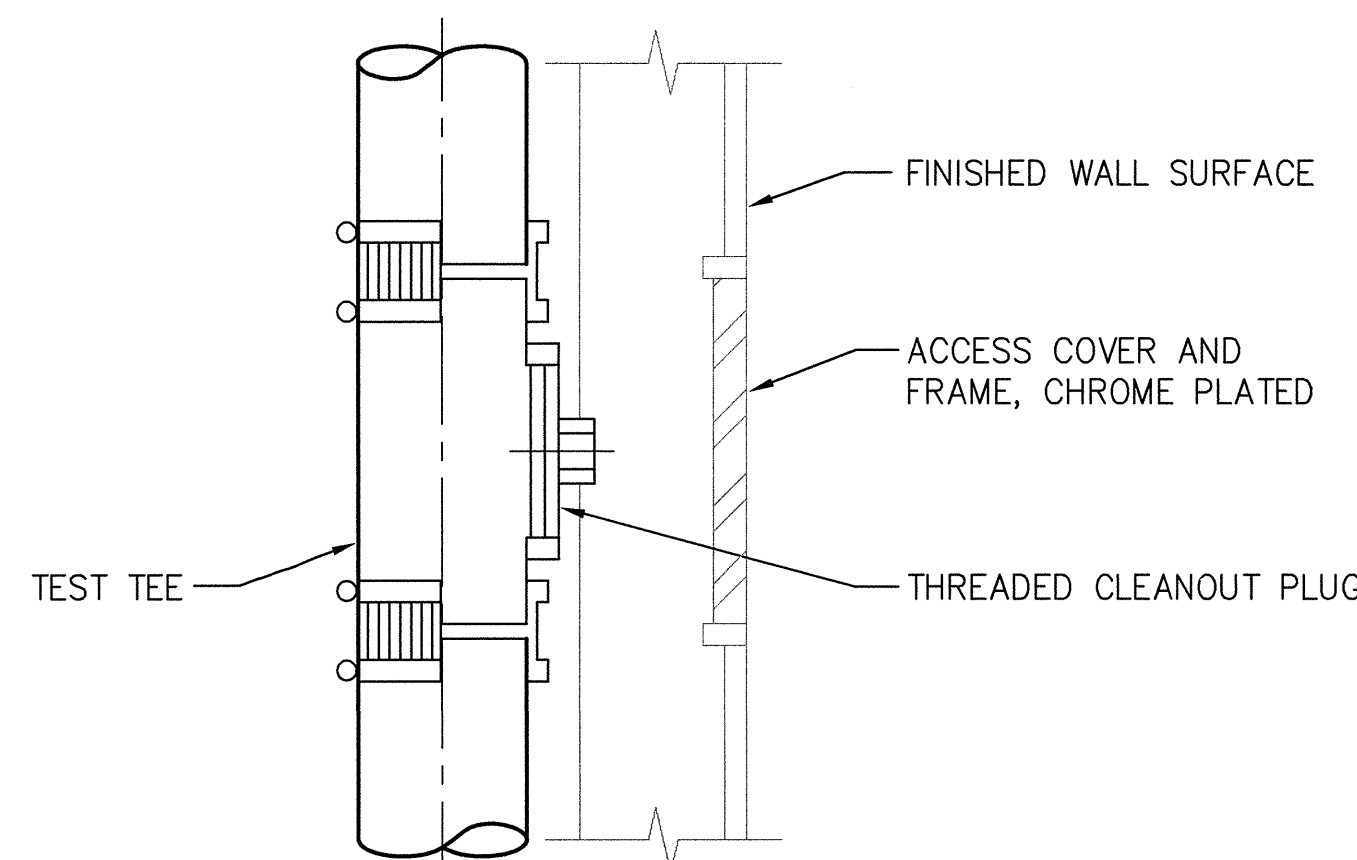


NOTES:

1. PIPE SADDLES REQUIRED ON ALL INSULATED LINES AT HANGERS.
2. INSULATION SHOULD BE CONTINUOUS THRU WALL WITH A 1/4" SPACE BETWEEN INSULATION AND SLEEVE UNLESS OTHERWISE SPECIFIED.
3. DO NOT INSULATE UNIONS IN HEATING SYSTEMS.
4. ESCUTCHEON PLATE IN AREAS EXPOSED TO VIEW.

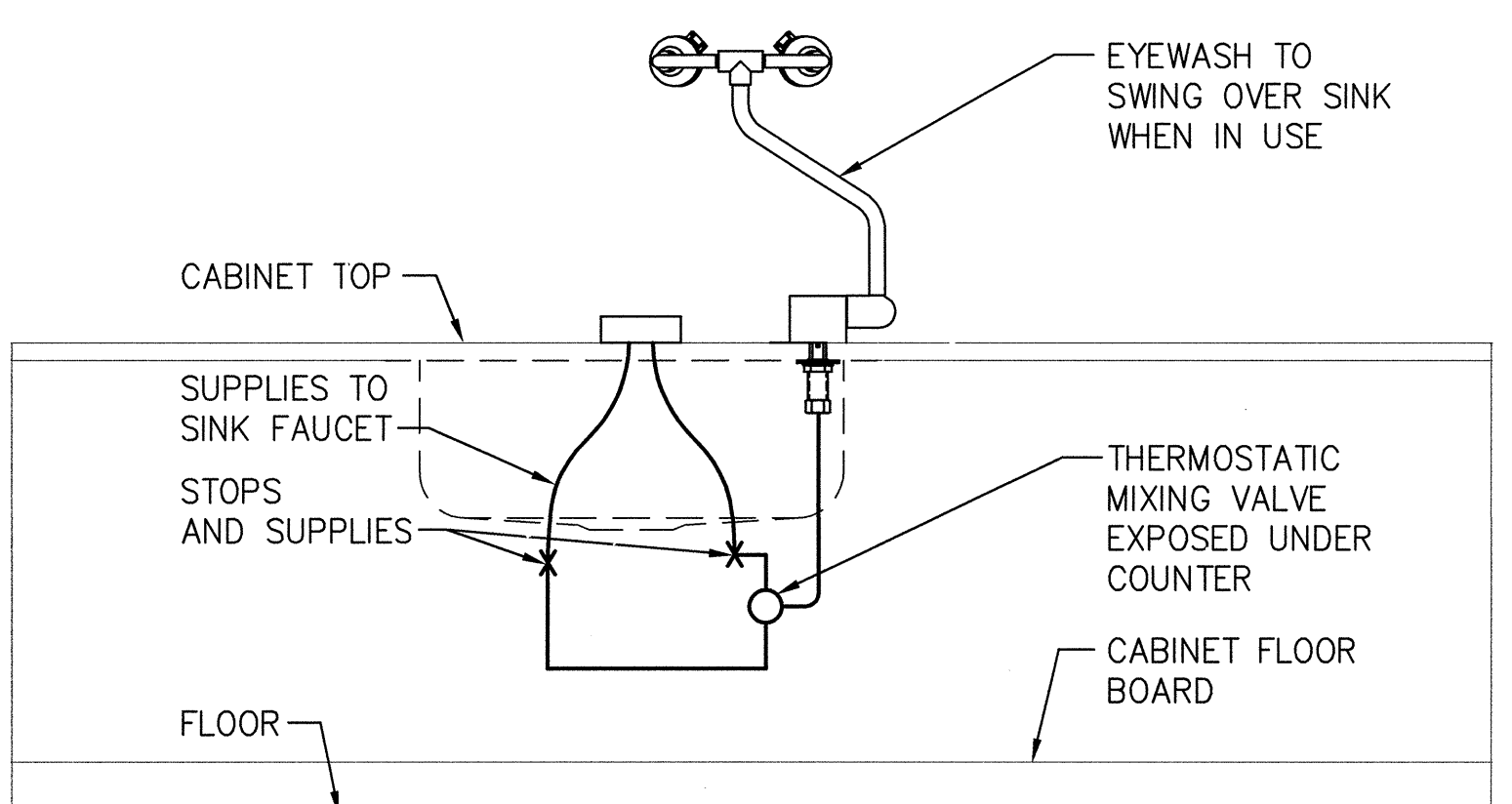
PIPE INSULATION

SCALE: NONE



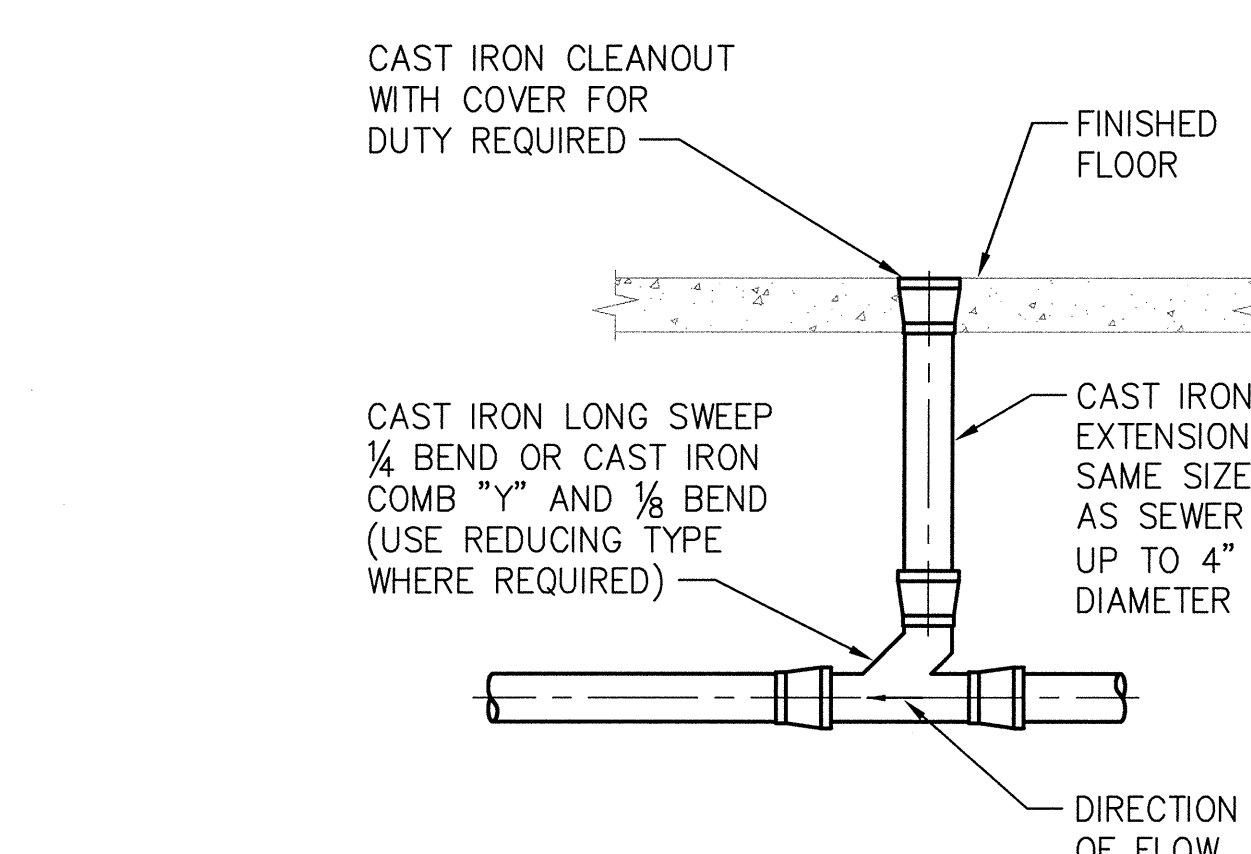
WALL CLEANOUTS

SCALE: NONE



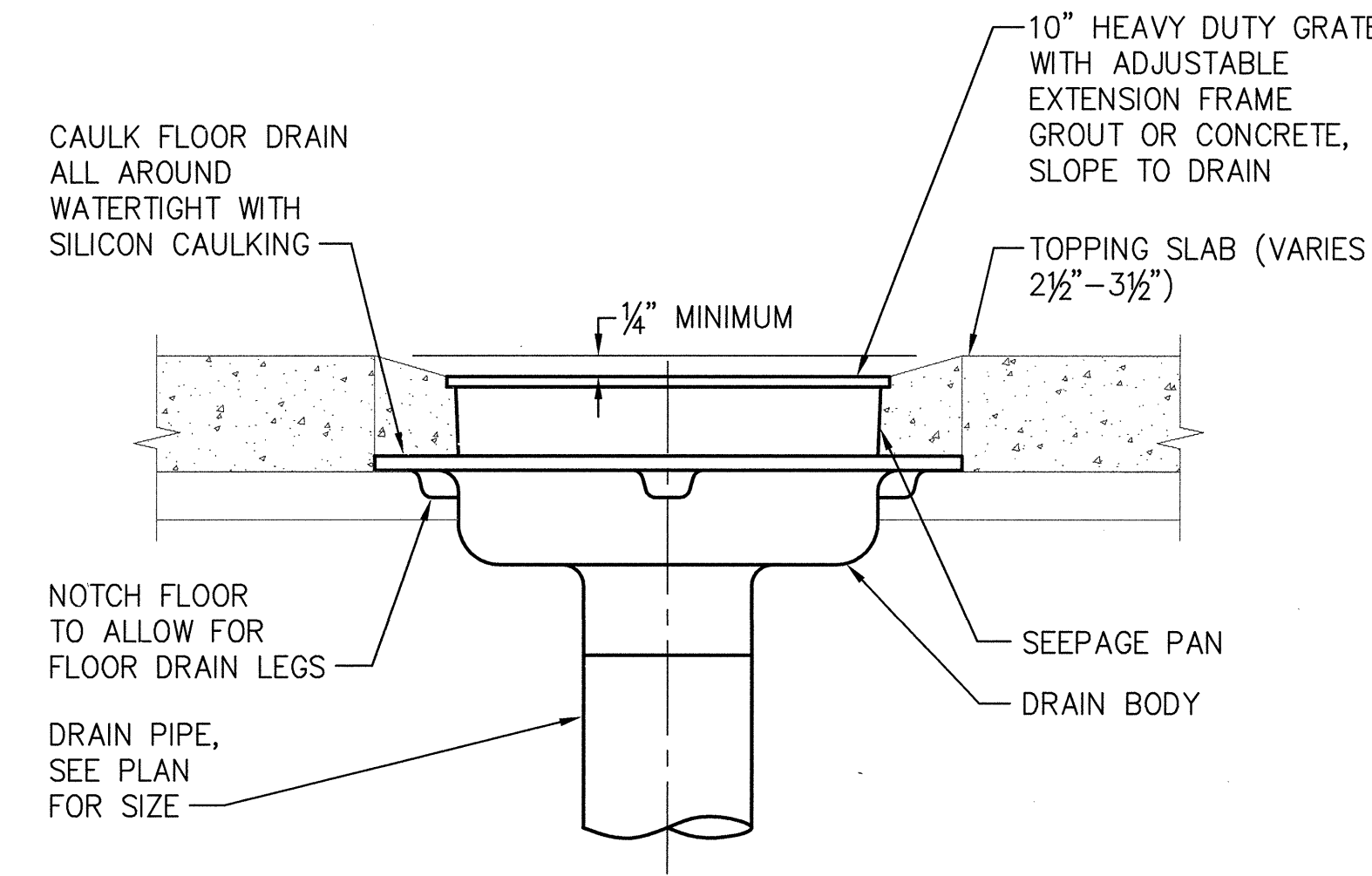
EYEWASH AT SINK

SCALE: NONE



CLEANOUTS

SCALE: NONE



FLOOR DRAIN INSTALLATION

SCALE: NONE