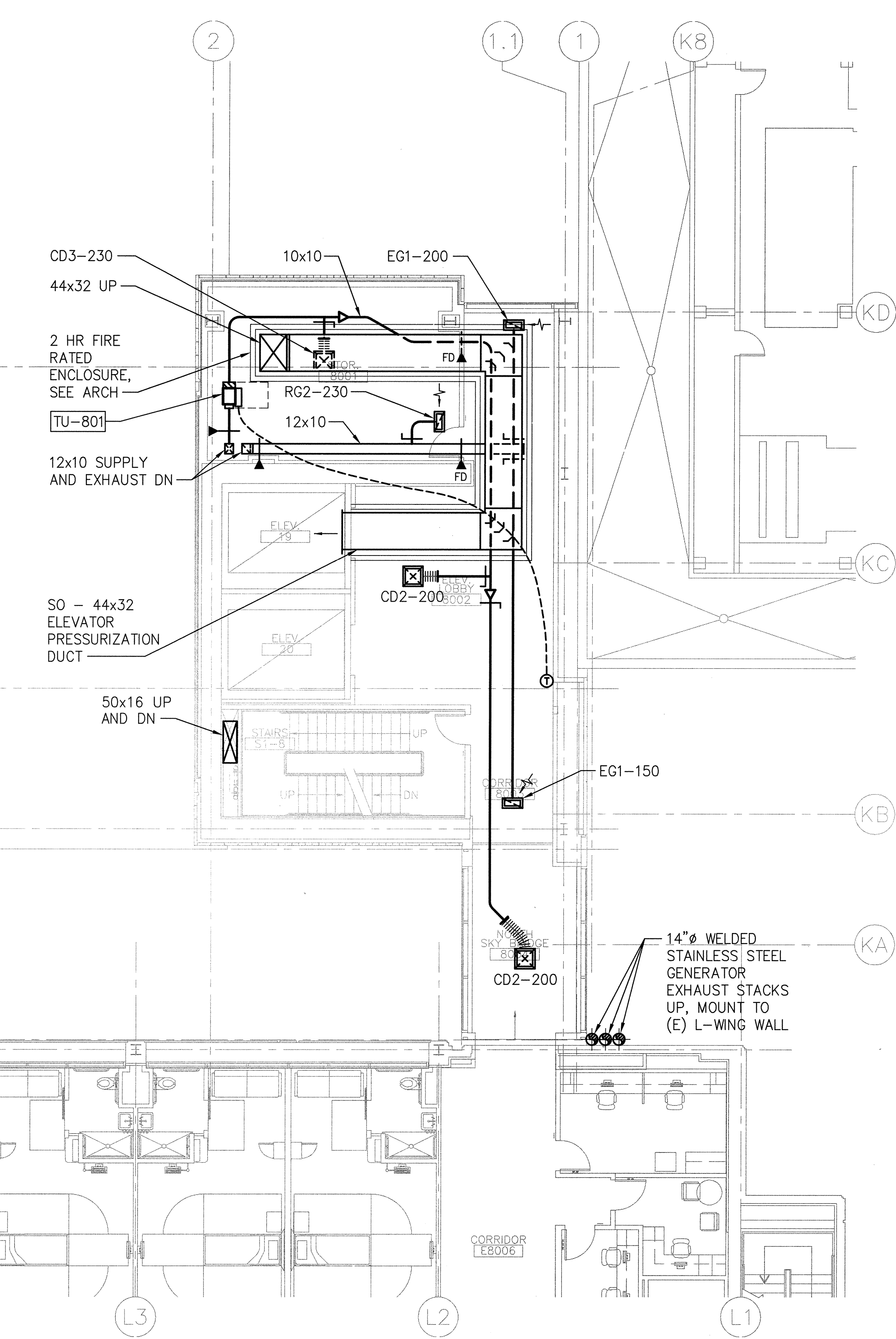
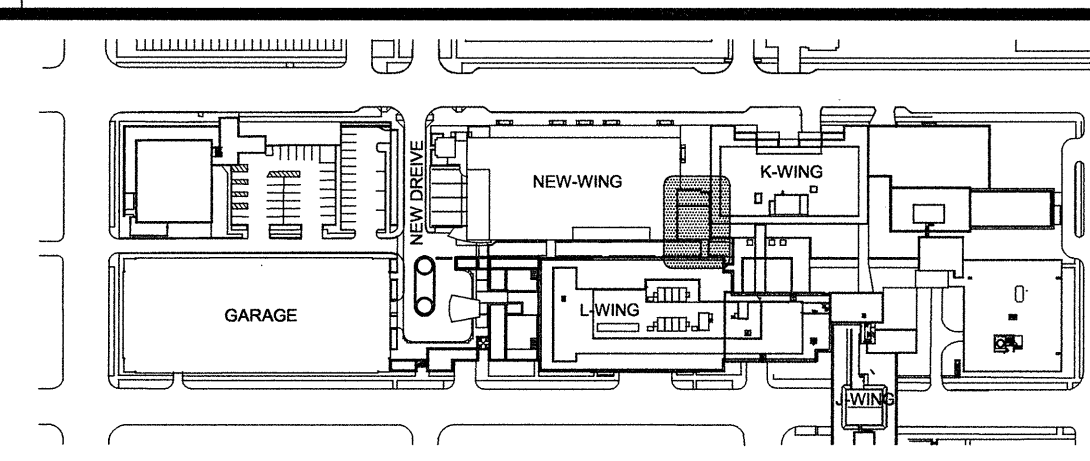
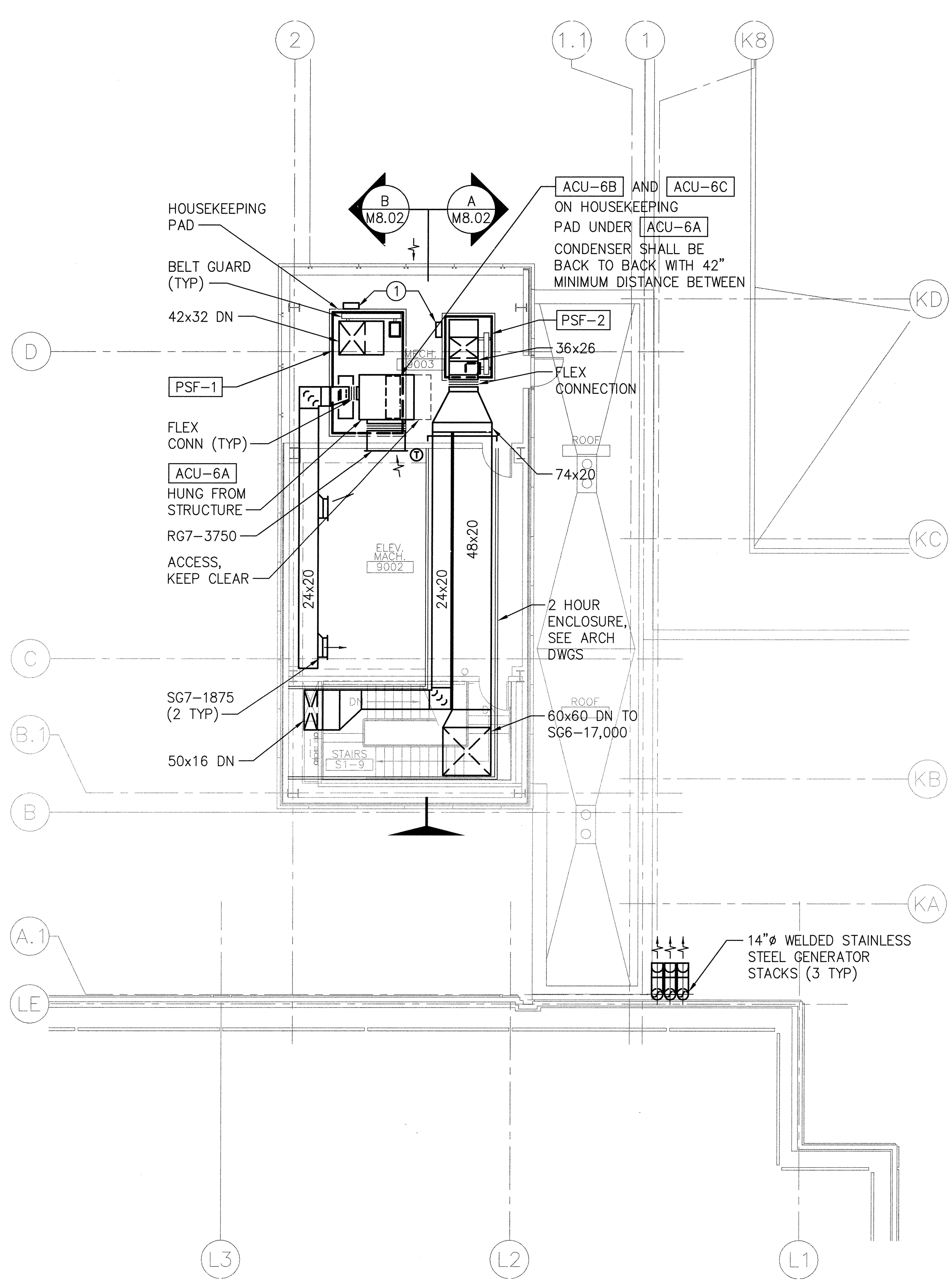


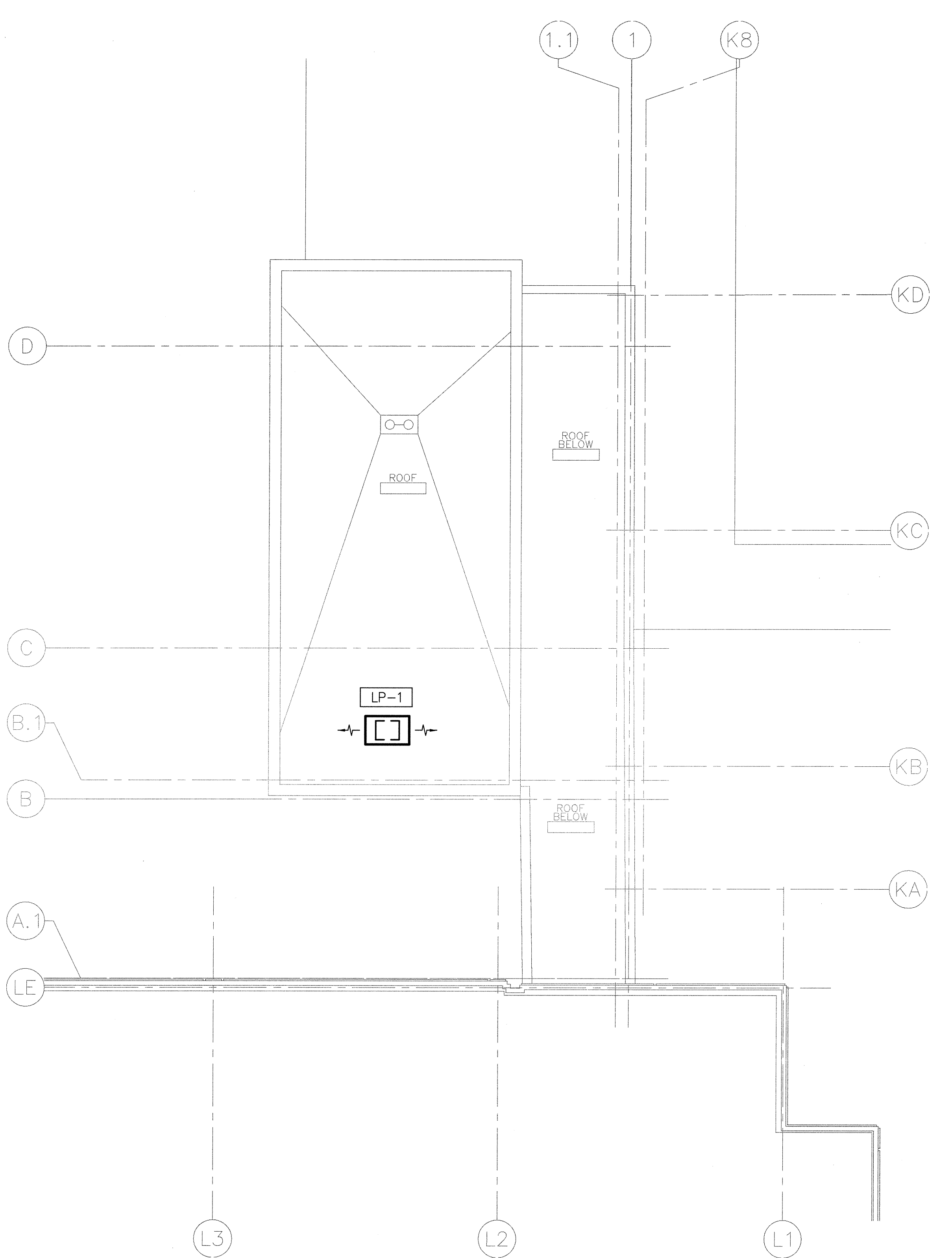
1 2 3 4 5 6 7



PARTIAL 8TH FLOOR PLAN - HVAC
SCALE: 1/8"=1'-0"



PARTIAL 9TH FLOOR PLAN - HVAC
SCALE: 1/8"=1'-0"

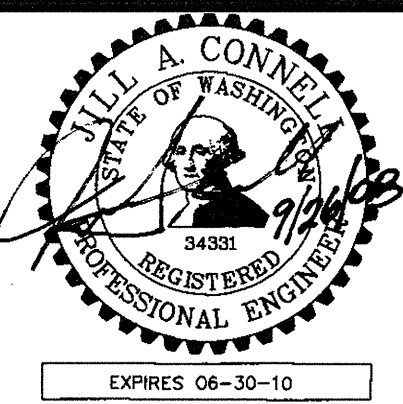


PARTIAL ROOF PLAN - HVAC
SCALE: 1/8"=1'-0"

KEY NOTES:
① PROVIDE VARIABLE FREQUENCY DRIVE AND STAND FOR PRESSURIZATION FAN.

GIFFIN • BOLTE • JURGENS
ARCHITECTS
815 S.W. SECOND AVENUE • PORTLAND, OREGON 97204
(503) 223-0992 www.gbjaarch.com FAX (503) 294-3961

CDI ENGINEERS
4200 - 184th St SW, Suite 200
Lynnwood, WA 98036
T 425.872.1071 F 425.778.8798
www.CDIENGINEERS.com



MultiCare
EMERGENCY DEPARTMENT & CANCER CENTER EXPANSION
TACOMA, WASHINGTON

Date 09-26-2008
Scale 1/8"=1'-0"
Drawn By CDI
Job No. 4034

PARTIAL 8TH, 9TH
& ROOF PLAN -
HVAC

M4
18