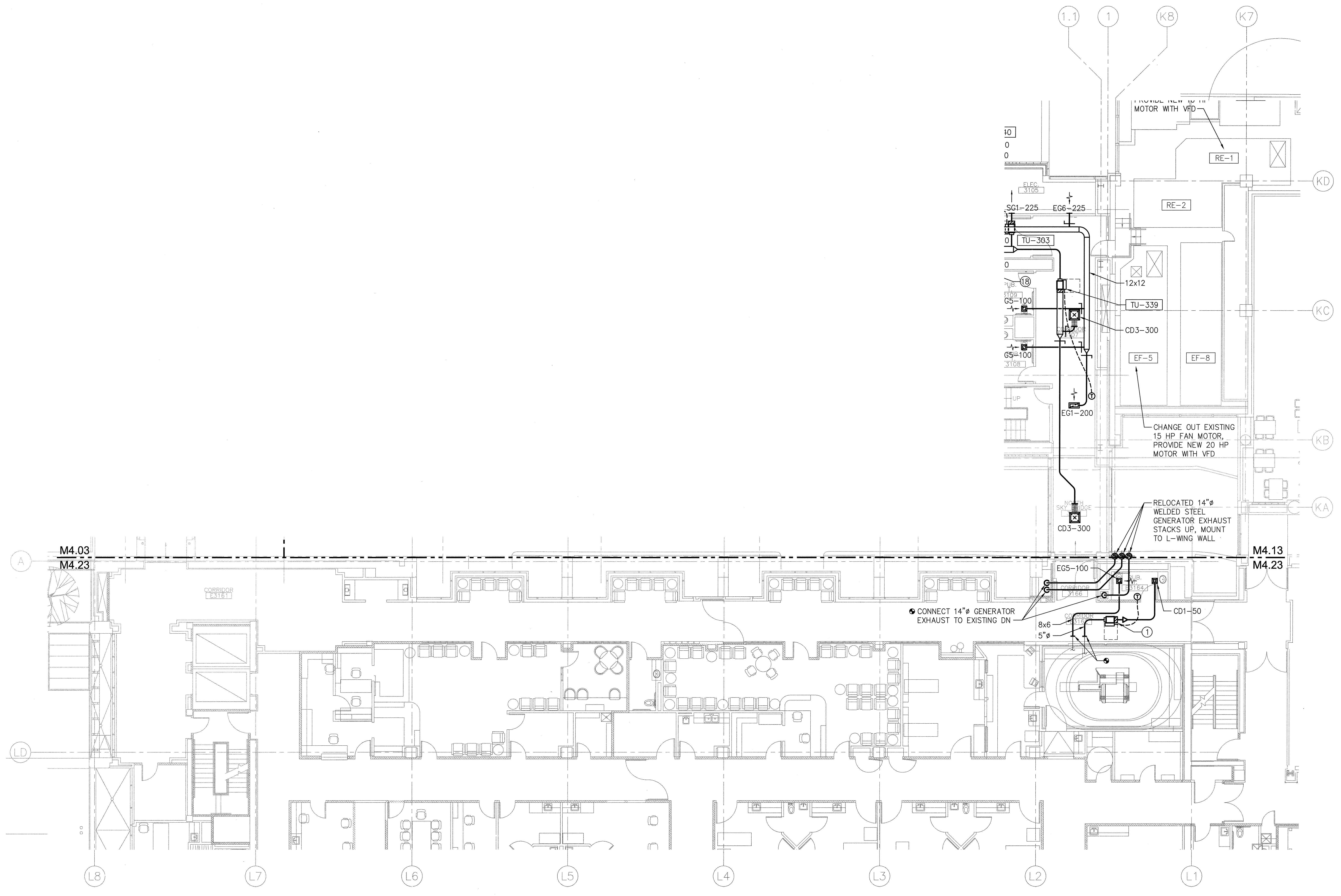
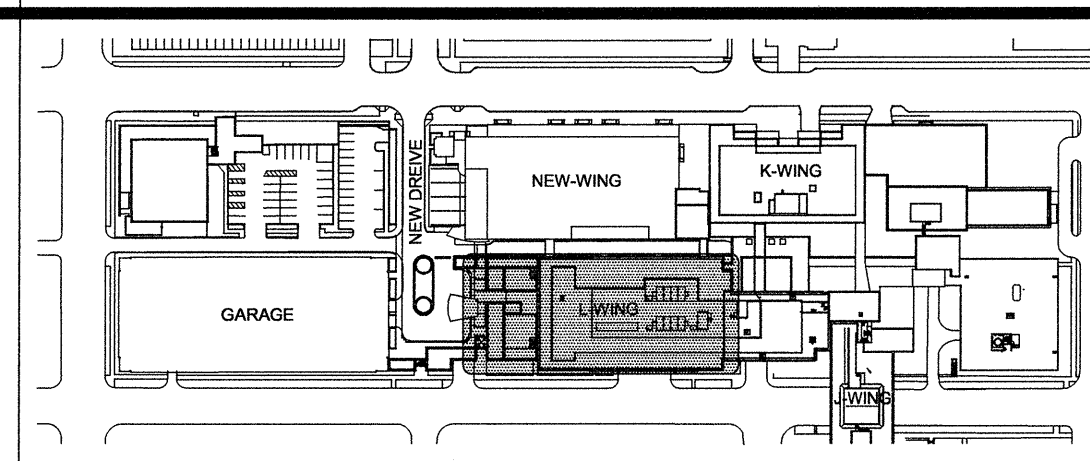


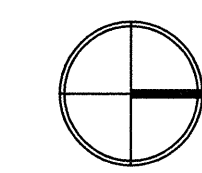
1 2 3 4 5 6 7

A  
B  
C  
D  
E



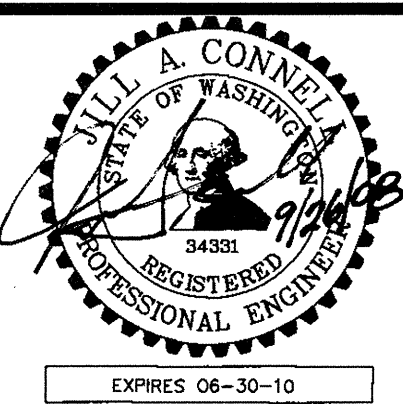
3RD FLOOR PLAN - L & K WING REMODEL - HVAC  
SCALE: 1/8"=1'-0"

KEY NOTES:  
① EXISTING TERMINAL UNIT RELOCATED AND RECONNECTED. ADJUST FOR NEW AIR FLOW.



GIFFIN • BOLTE • JURGENS  
ARCHITECTS  
815 S.W. SECOND AVENUE, PORTLAND, OREGON 97204  
(503) 223-0992 www.gbjarch.com FAX (503) 294-3961

CDI ENGINEERS  
4200 - 194th St SW, Suite 200  
Lynnwood, WA 98036  
T 425.672.1071 F 425.778.8769  
www.CDIENGINEERS.com



MultiCare  
EMERGENCY DEPARTMENT & CANCER CENTER EXPANSION  
TACOMA, WASHINGTON

Date 09-26-2008  
Scale 1/8"=1'-0"  
Drawn By CDI  
Job No. 4034

3RD FLOOR  
PLAN - L & K  
WING REMODEL -  
HVAC

M4  
23