

2ND FLOOR PLAN - SOUTH - HVAC PIPING

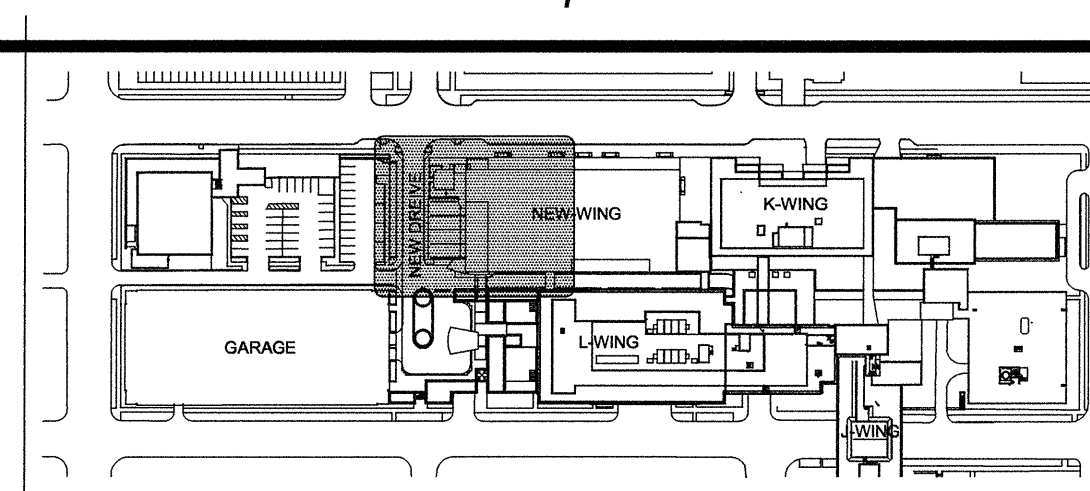
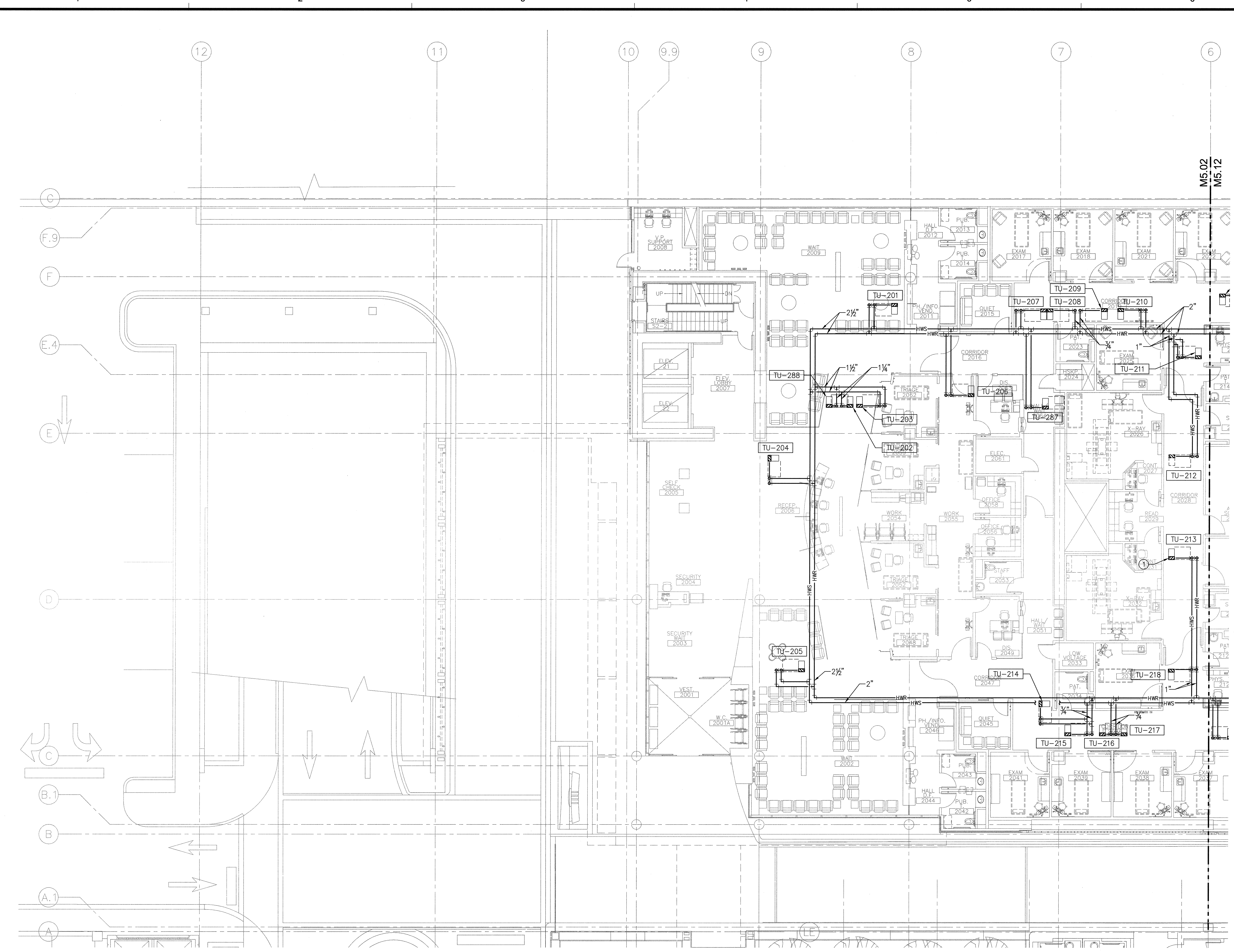
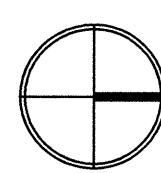
SCALE: 1/8"=1'-0"

GENERAL NOTES:

1. TERMINAL UNITS SHALL BE PIPED WITH TWO-WAY CONTROL VALVES UNLESS NOTED OTHERWISE ON PLANS. SEE DETAIL 1 ON M10.05.

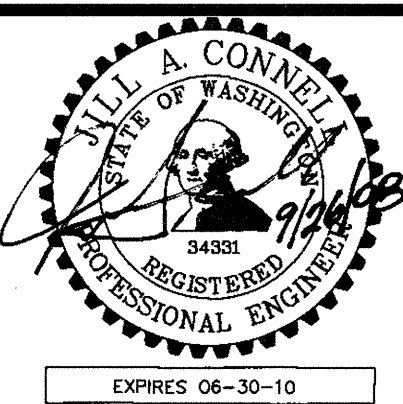
KEY NOTES:

- ① PIPE TERMINAL UNIT HEATING COIL WITH THREE-WAY CONTROL VALVE, SEE DETAIL 1 ON M10.05.



GIFFIN • BOLTE • JURGENS
ARCHITECTS
815 S.W. SECOND AVENUE • PORTLAND, OREGON 97204
(503) 223-0992 www.gbjarch.com FAX (503) 294-3961

CDI ENGINEERS
4200 - 194th St SW, Suite 200
Lynnwood, WA 98036
T 425.672.1071 F 425.778.8769
www.CDIENGINEERS.com



MultiCare
EMERGENCY DEPARTMENT & CANCER CENTER EXPANSION
TACOMA, WASHINGTON

Date 09-26-2008
Scale 1/8"=1'-0"
Drawn By CDI
Job No. 4034

**2ND FLOOR
PLAN - SOUTH -
HVAC PIPING**

**M5
02**