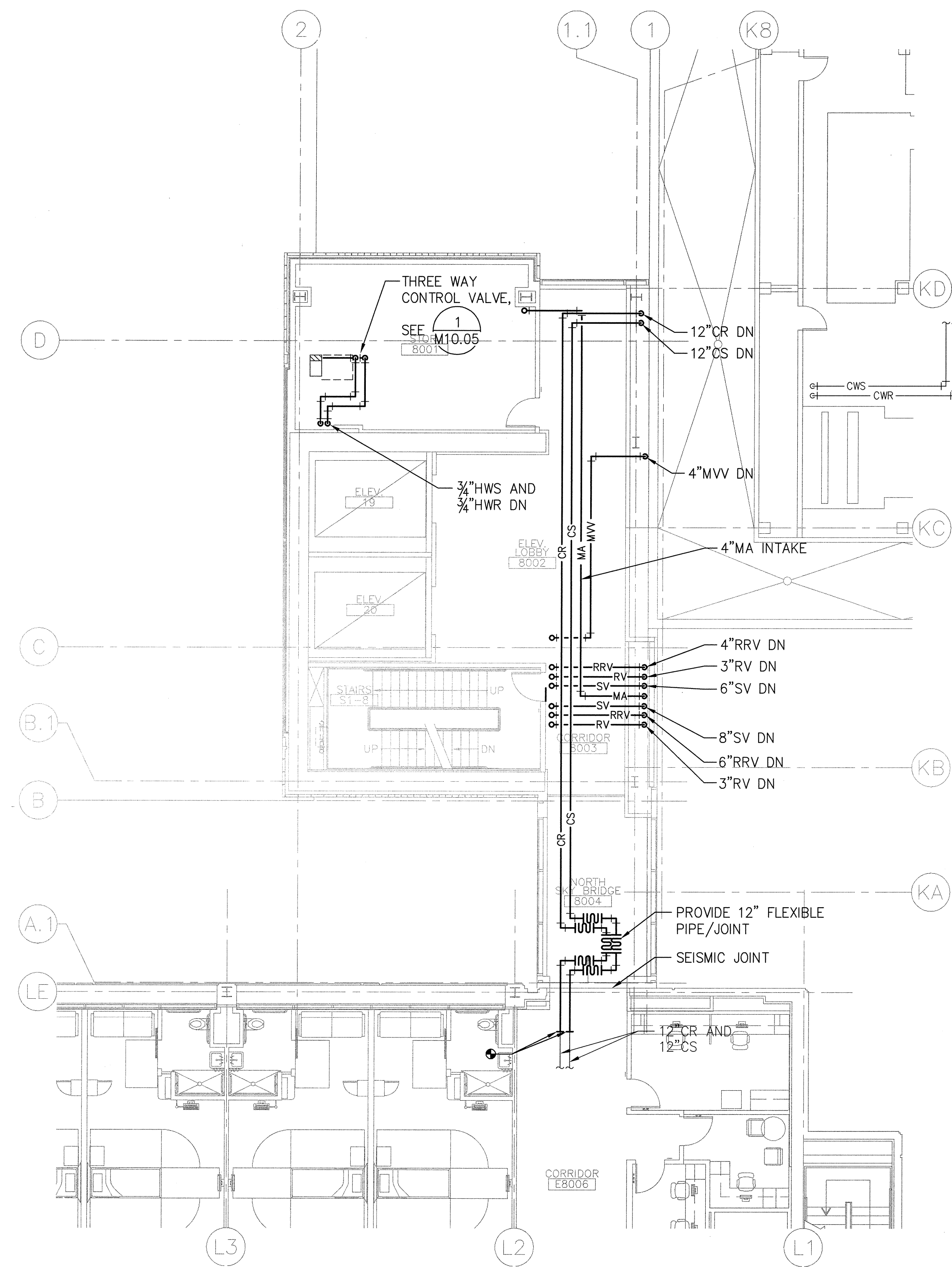
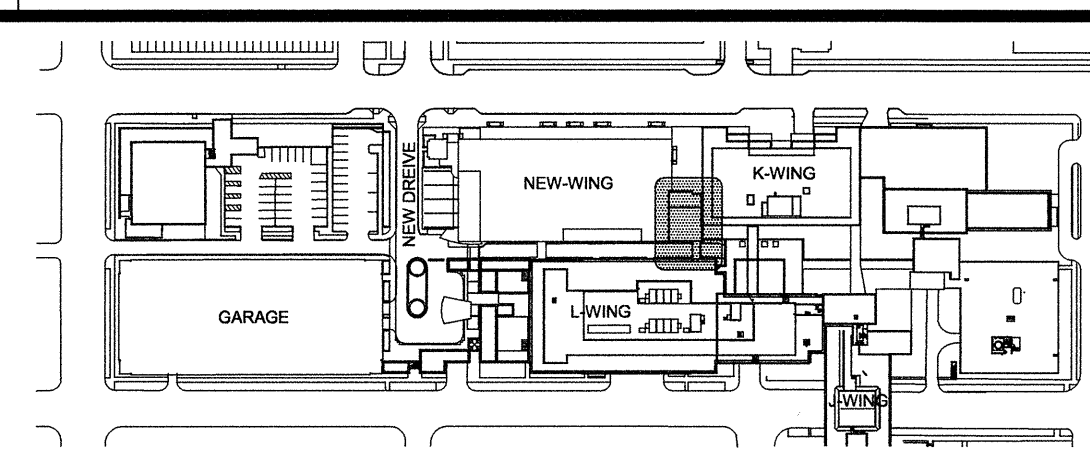
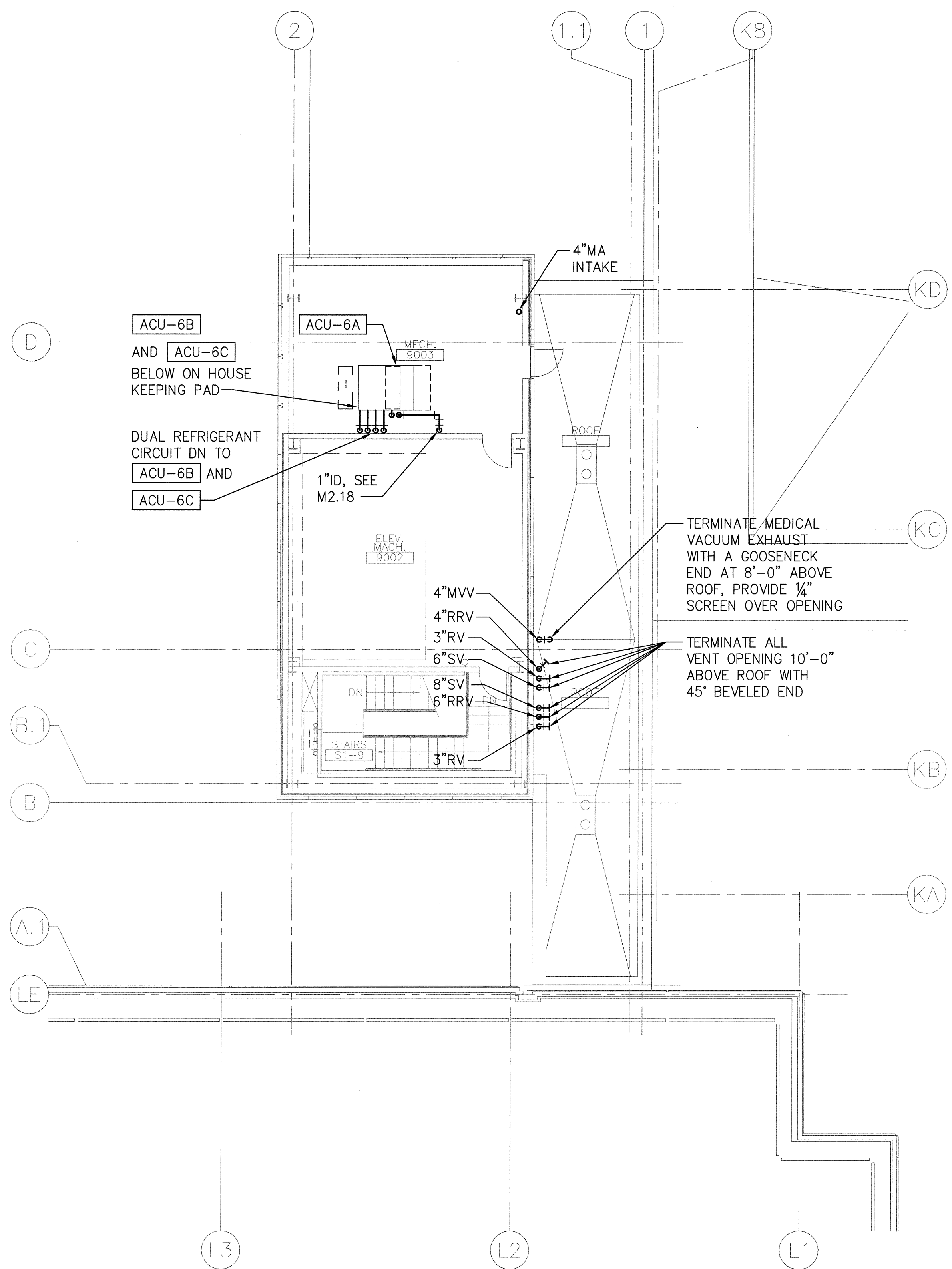


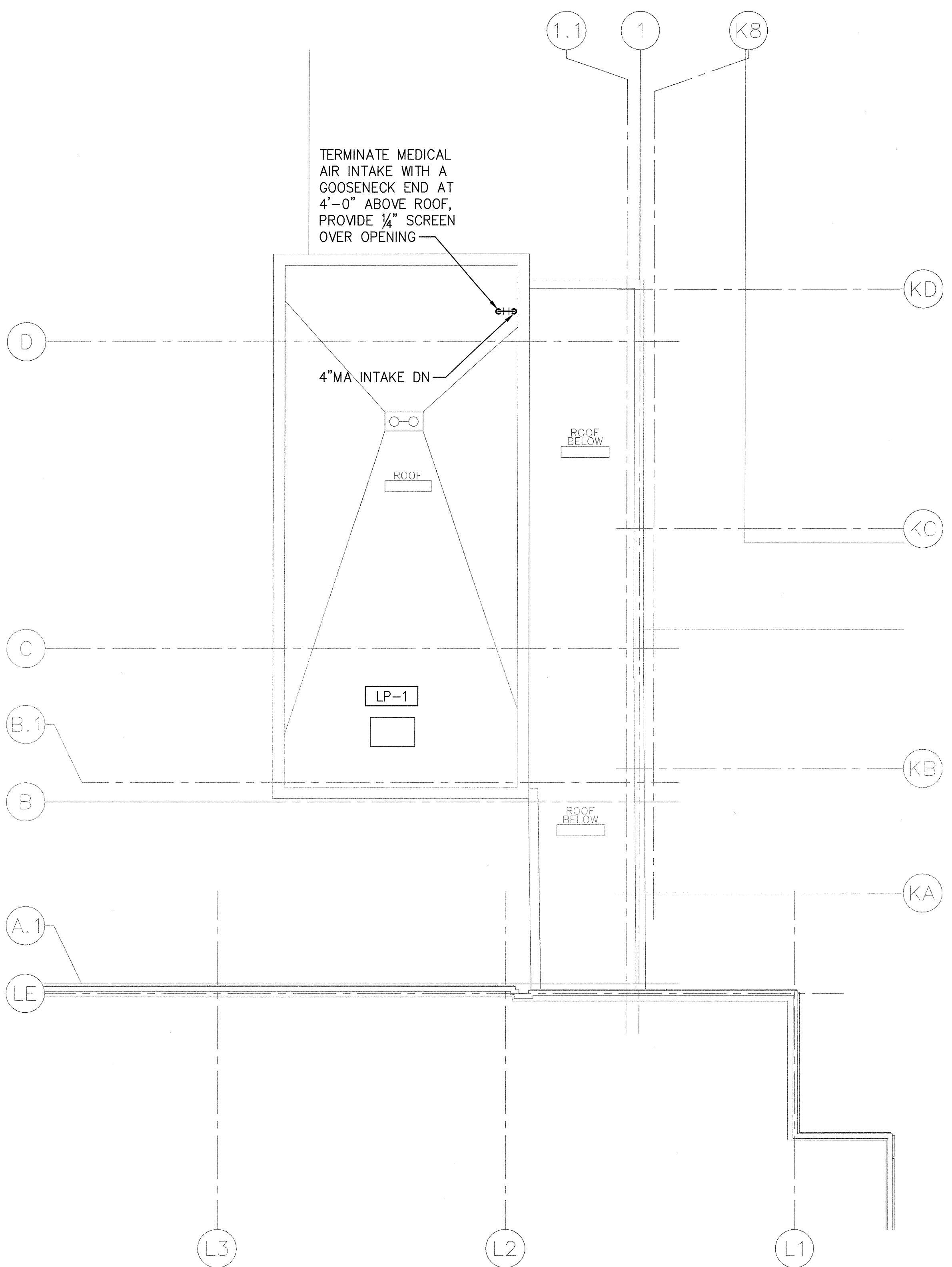
1 2 3 4 5 6 7



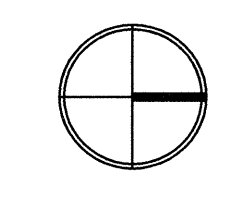
PARTIAL 8TH FLOOR PLAN - HVAC PIPING  
SCALE: 1/8"=1'-0"



PARTIAL 9TH FLOOR PLAN - HVAC PIPING  
SCALE: 1/8"=1'-0"

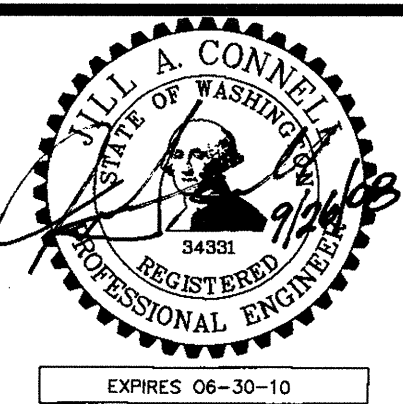


PARTIAL ROOF PLAN - HVAC PIPING  
SCALE: 1/8"=1'-0"



**GIFFIN • BOLTE • JURGENS**  
ARCHITECTS  
815 S.W. SECOND AVENUE - PORTLAND, OREGON 97204  
(503) 223-0992 www.gbjarch.com FAX (503) 294-3961

**CDI ENGINEERS**  
4200 - 194th St SW, Suite 200  
Lynnwood, WA 98036  
T 425.672.1071 F 425.778.8769  
www.CDIENGINEERS.com



**MultiCare**  
EMERGENCY DEPARTMENT & CANCER CENTER EXPANSION  
TACOMA, WASHINGTON


Date 09-26-2008  
Scale 1/8"=1'-0"  
Drawn By CDI  
Job No. 4034

PARTIAL 8TH, 9TH  
& ROOF PLAN -  
HVAC PIPING

**M5**  
**18**