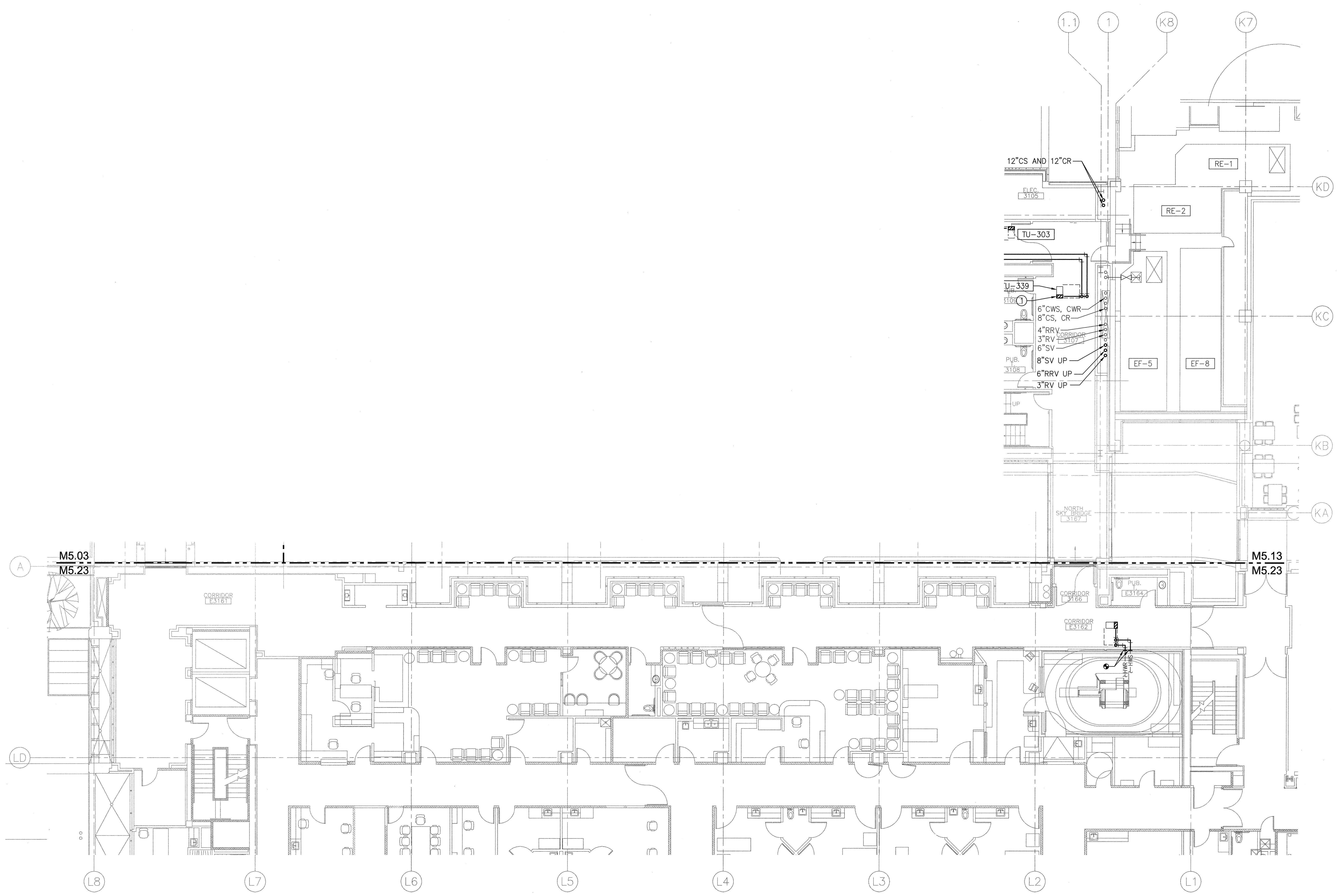
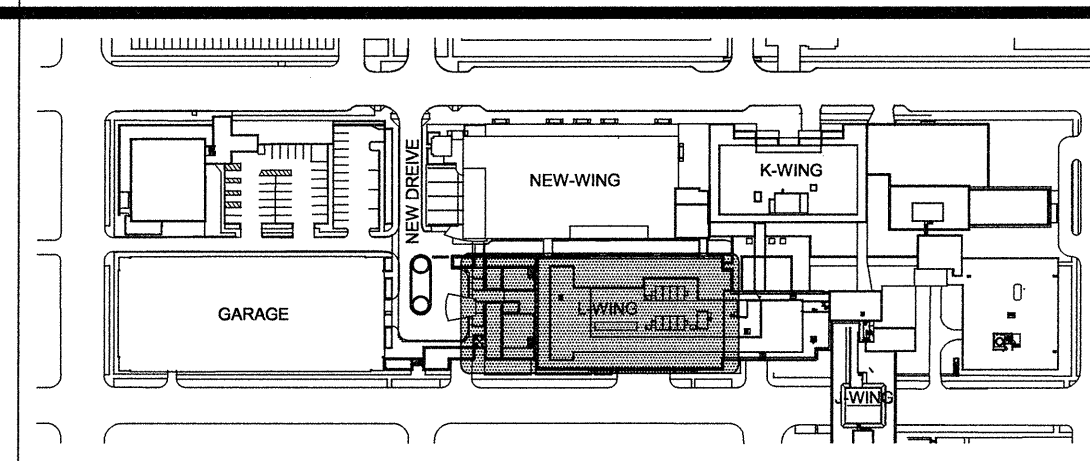


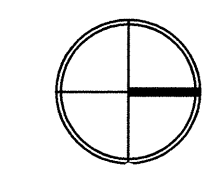
1 2 3 4 5 6 7

A  
B  
C  
D  
E

A  
B  
C  
D  
E

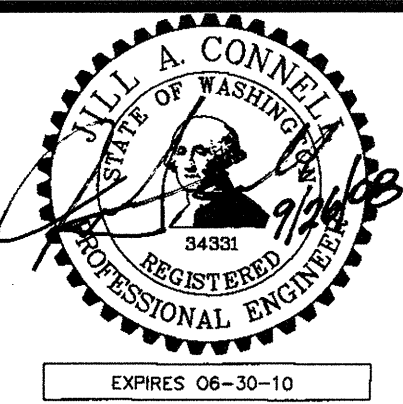


**3RD FLOOR PLAN - L & K WING REMODEL - HVAC PIPING**  
SCALE: 1/8"=1'-0"



**GIFFIN • BOLTE • JURGENS**  
ARCHITECTS  
815 S.W. SECOND AVENUE • PORTLAND, OREGON 97204  
(503) 223-0992 • www.gbjarch.com FAX (503) 294-3961

**CDI ENGINEERS**  
4200 - 184th St SW, Suite 200  
Lynnwood, WA 98036  
T 425.672.1071 F 425.778.8799  
www.CDIENGINEERS.com



**MultiCare**  
EMERGENCY DEPARTMENT & CANCER CENTER EXPANSION  
TACOMA, WASHINGTON


Date 09-26-2008  
Scale 1/8"=1'-0"  
Drawn By CDI  
Job No. 4034

**3RD FLOOR  
PLAN - L & K  
WING REMODEL -  
HVAC PIPING**

**M5  
23**