

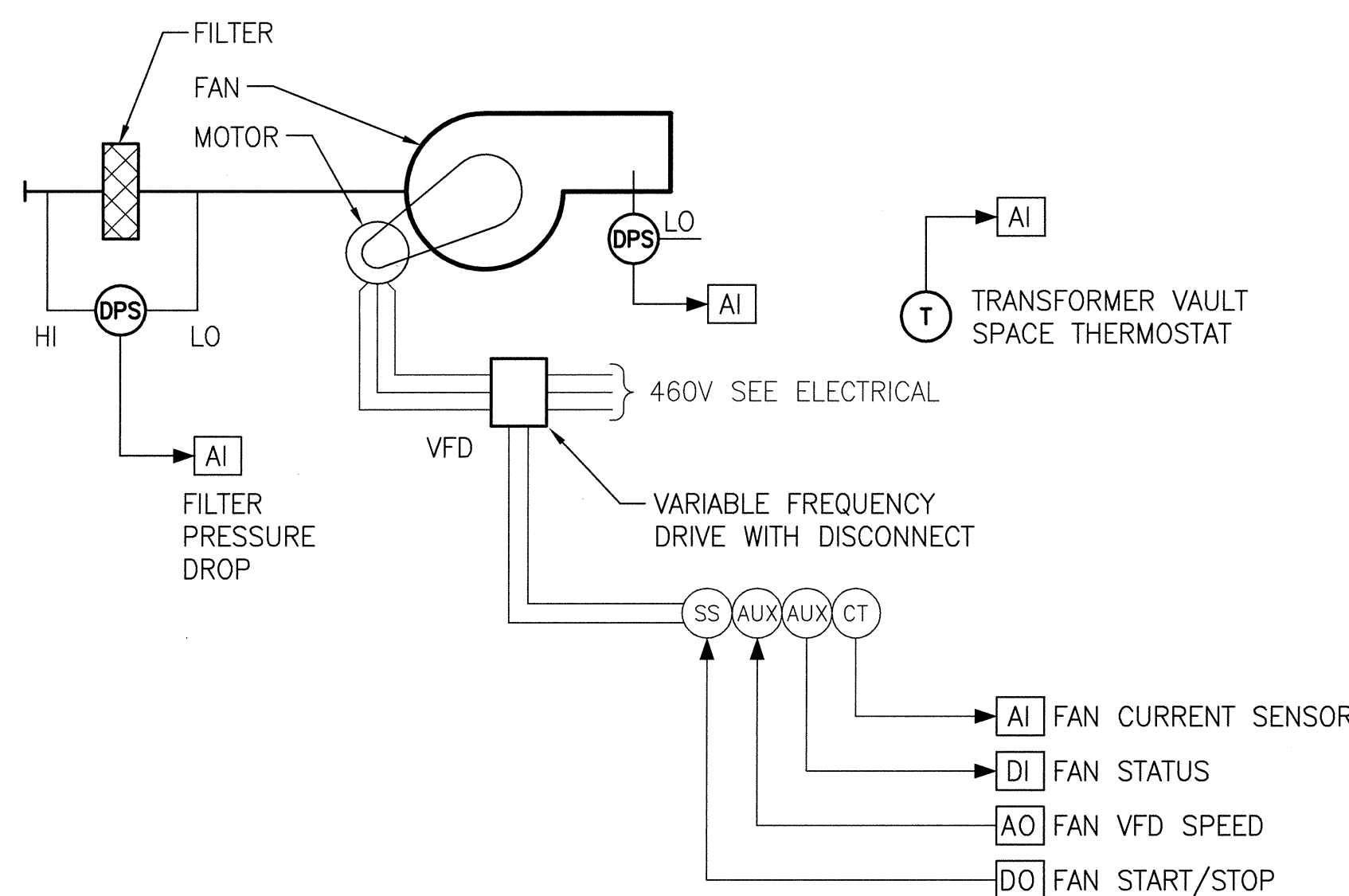
## DDC POINTS LIST

DESCRIPTION	DEVICE	INPUTS		OUTPUTS		ALARM	REMARKS
		ANALOG	DIGITAL	ANALOG	DIGITAL		
<b>AHU-8</b>							
FAN VFD START/STOP	CR				X		
FAN VFD SPEED CONTROL	AUX			X			
FAN VFD STATUS	AUX		X				
FAN VFD ALARM	AUX		X			X	
FAN CURRENT SENSOR	CT	X				X	
SPACE TEMPERATURE	T	X		X			
SUPPLY DUCT PRESSURE	DPS	X					
PRE-FILTER STATUS	DP	X				X	
<b>P1A AND P1B SANITARY SUMP PUMPS</b>							
REFER TO ED AND CANCER CENTER EXPANSION PACKAGE POINTS LIST							
<b>P2A AND P2B STORM SUMP PUMPS</b>							
REFER TO ED AND CANCER CENTER EXPANSION PACKAGE POINTS LIST							

## SEQUENCE OF OPERATION

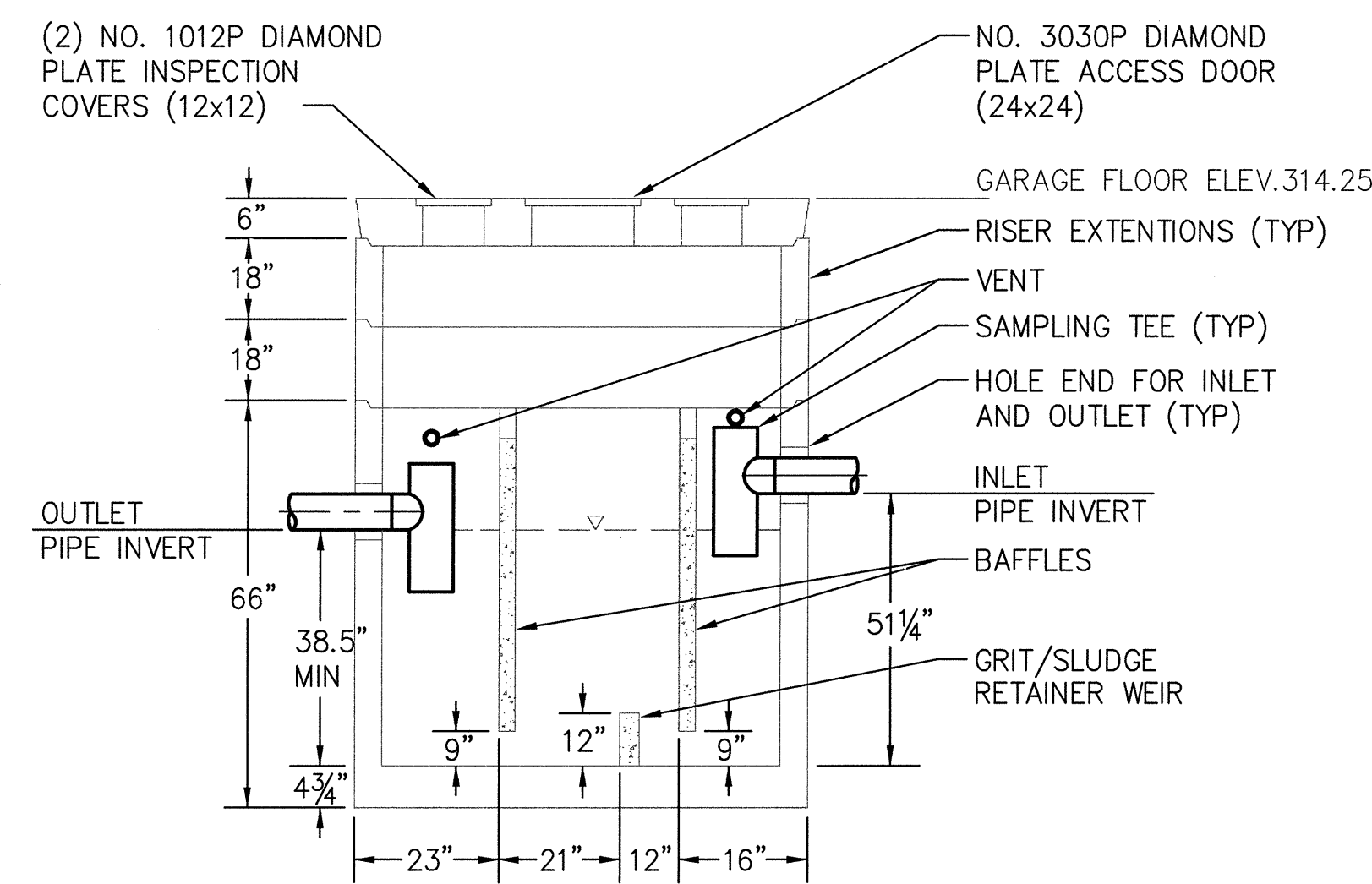
**AHU-8**  
THE ROOM THERMOSTAT THROUGH THE CAMPUS DDC CONTROLLER SHALL START THE FAN VFD WHEN THE ROOM TEMPERATURE IS 70°F (ADJUSTABLE). THE FAN STATIC PRESSURE SENSOR LOCATED IN THE FAN DISCHARGE DUCT THROUGH THE DDC CONTROLLER SHALL MODULATE THE FAN VFD TO MAINTAIN INITIAL STATIC PRESSURE SET POINT OF 0.15" W.G.

**SUMP PUMPS**  
CONTROLS FOR SUMPS WILL BE CONNECTED TO THE BUILDING DDC SYSTEM PROVIDED AS PART OF THE ED AND CANCER CENTER EXPANSION PACKAGE.



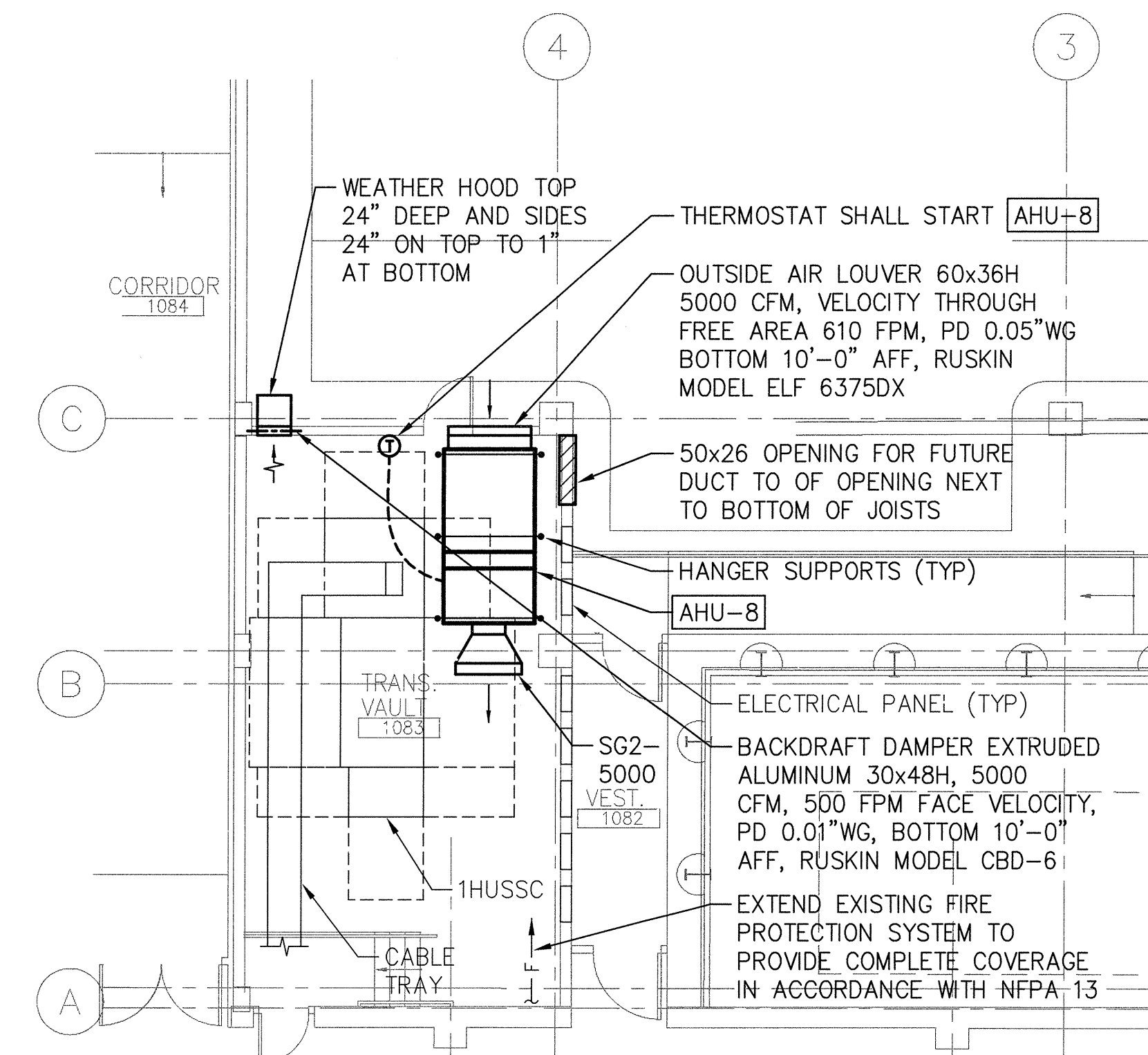
## AHU-8 CONTROL DIAGRAM

SCALE: NONE



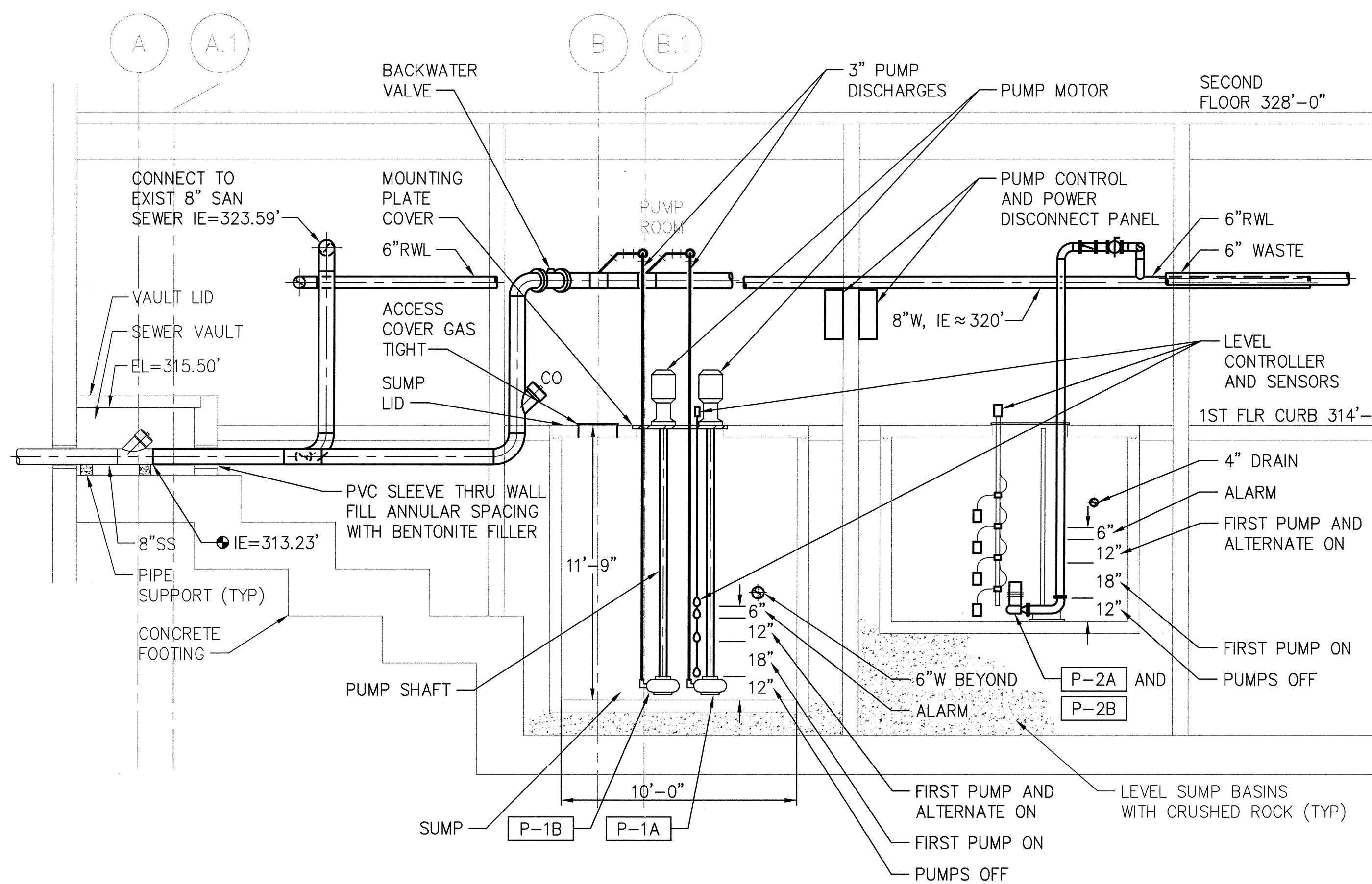
## SAND AND OIL / WATER INTERCEPTOR DETAIL

SCALE: NONE



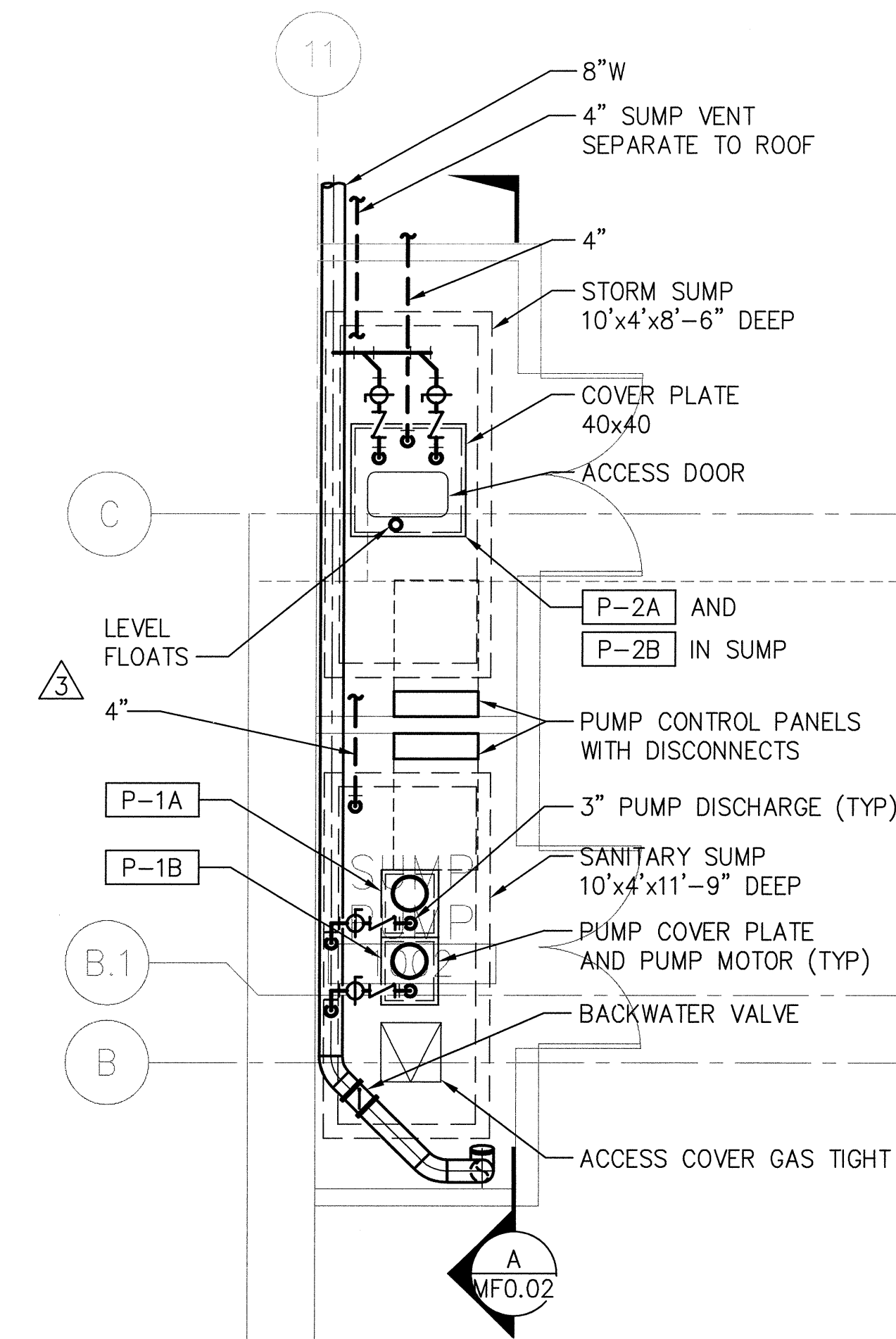
## FIRST FLOOR PLAN - NORTH - MECHANICAL

SCALE: 1/8"=1'-0"



## SECTION

SCALE: 1/4"=1'-0"



## PUMP ROOM PLAN

SCALE: 1/4"=1'-0"