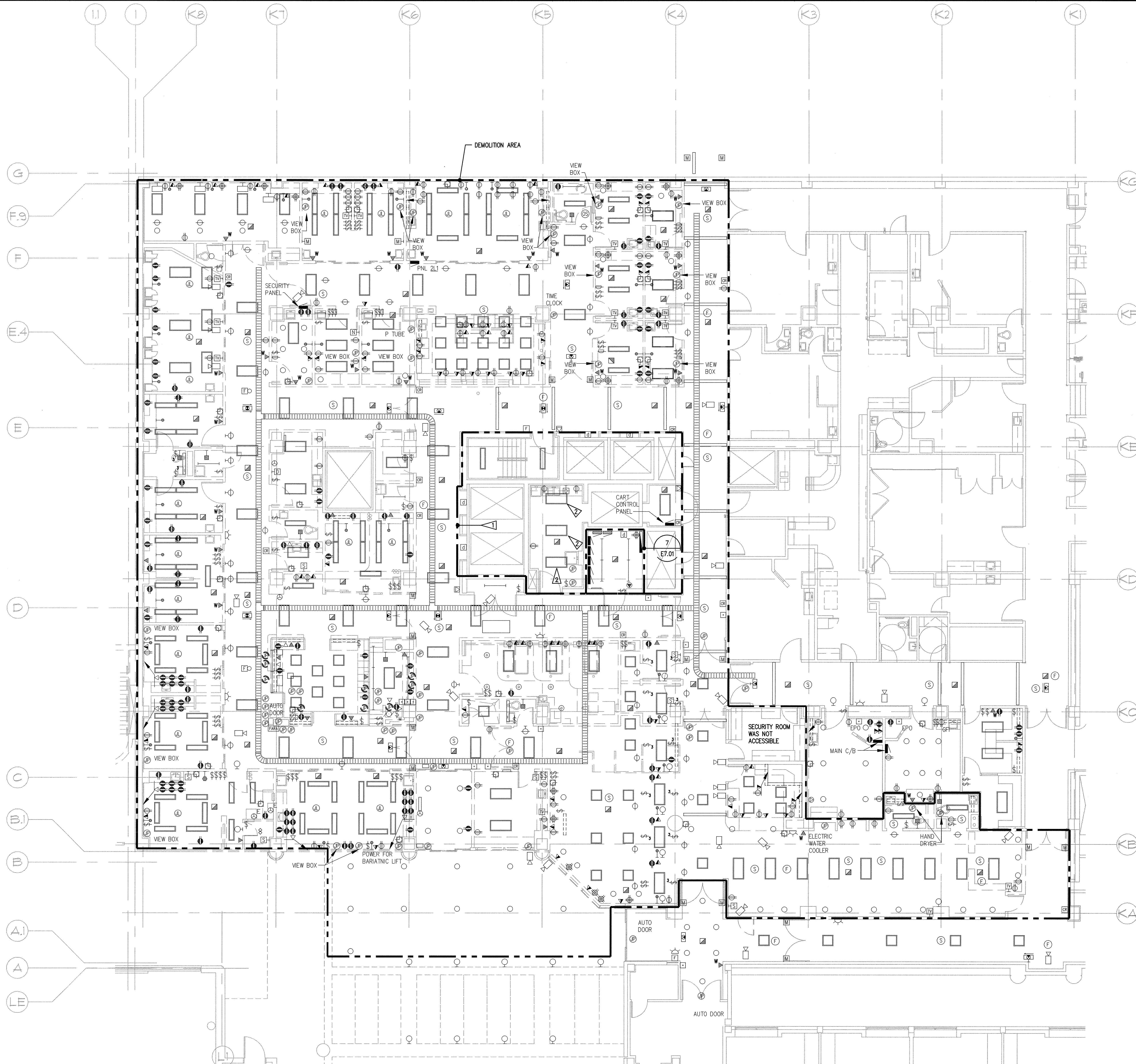


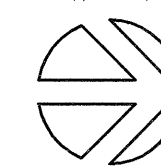
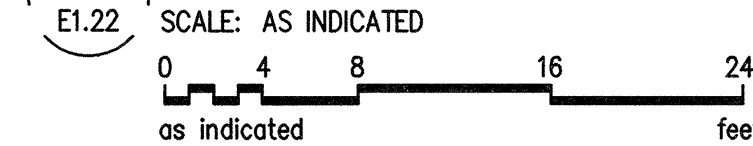
N:\B13608\CADD-05\01_E1-22.DWG SEP 25, 2008 -- 11:44:55 AM BY: TWHITE

A
B
C
D
E
F
G
H
I
J
K
L
M

1 2 3 4 5 6 7



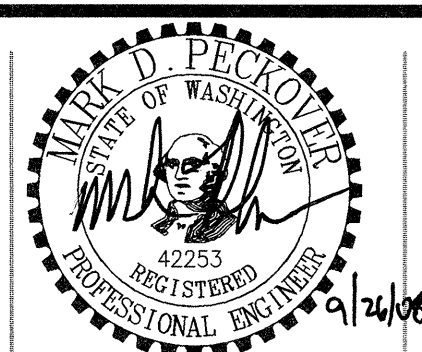
1 SECOND FLOOR K-WING DEMOLITION PLAN - ELECTRICAL



SPARLING
ELECTRICAL ENGINEERING | TECHNOLOGY CONSULTING

GIFFIN • BOLTE • JURGENS
ARCHITECTS

815 S.W. SECOND AVENUE • PORTLAND, OREGON 97204
(503) 223-0992 www.gbjarch.com FAX (503) 294-3961



MultiCare

EMERGENCY DEPARTMENT & CANCER CENTER EXPANSION

TACOMA, WASHINGTON

GENERAL NOTES

1. ELECTRICAL EQUIPMENT RACEWAY AND CONDUCTORS, WHICH ARE NO LONGER IN SERVICE PRESENTLY OR AS A RESULT OF THIS CONTRACT SHALL BE REMOVED.
2. CONTRACTOR SHALL REMOVE ALL ELECTRICAL EQUIPMENT IN THE "DEMOLITION AREA" INDICATED ON THE DRAWING EVEN IF THE EQUIPMENT OR DEVICE IS NOT SHOWN ON THE PROJECT DRAWINGS. IF CONTRACTOR QUESTIONS WHETHER A PARTICULAR DEVICE IS TO BE REMOVED NOTIFY THE ARCHITECT NOTING TYPE AND LOCATION OF DEVICE. IF SO DIRECTED THE CONTRACTOR SHALL MAINTAIN THE EXISTING DEVICE IN SERVICE WITHOUT ANY CHANGE IN CONTRACT PRICE.
3. ANY EXISTING WIRING SERVING DEVICES TO REMAIN IN SERVICE AND WHICH IS INTERRUPTED BY WORK PERFORMED UNDER THIS CONTRACT SHALL BE REROUTED TO MAINTAIN CIRCUIT CONTINUITY. CONTRACTOR SHALL ASSUME THE RISK OF MAINTAINING EXISTING SYSTEMS EXCEPT RELOCATION OF WIRING OF #2 AWG AND ABOVE SHALL BE CONSIDERED AN ADDITIONAL COST IF NOT SHOWN TO BE RELOCATED. IF SUCH WIRING IS FOUND THE CONTRACTOR SHALL NOTIFY ARCHITECT OF WIRING LOCATION, REASON IT MUST BE REMOVED AND COST OF RELOCATION AND RECEIVE THE OWNER'S APPROVAL BEFORE PROCEEDING WITH THE WORK.
4. PRIOR TO COMMENCING WITH DEMOLITION, IDENTIFY ALL POWER, LIGHTING, COMMUNICATION AND SIGNAL CIRCUITS PASSING THROUGH THE DEMOLITION AREA OR EXTENDING BEYOND THE DEMOLITION AREA. (COORDINATE MAINTAINING OWNER INSTALLED SYSTEMS WITH OWNER'S REPRESENTATIVE.) CLEARLY MARK ITEMS TO BE MAINTAINED AND COORDINATE WITH DEMOLITION WORK OF OTHER TRADES.
5. PROVIDE TEMPORARY WIRING AS NECESSARY TO MAINTAIN EXISTING CIRCUITS EXTENDING BEYOND REMODEL AREA.
6. WHERE NEW AND REMODEL WORK BY ELECTRICAL, MECHANICAL, PLUMBING OR OTHER TRADES IS INDICATED ON PLANS, REMOVE, RELOCATE AND REINSTALL ALL EXISTING ELECTRICAL SYSTEMS INCLUDING, BUT NOT LIMITED TO: ELECTRICAL CONDUITS, CIRCUITS, LIGHTING, EQUIPMENT, DEVICES AND SUPPORTS AS REQUIRED TO INSTALL NEW WORK AND REMODEL EXISTING WORK.
7. CIRCUITING AND CONDUIT ROUTING IS FOR REFERENCE ONLY. THIS INFORMATION WAS GATHERED FROM AS-BUILT DRAWINGS.
8. FIXTURES NOTED TO BE REMOVED SHALL BE TURNED OVER TO MULTICARE T&H FACILITY STAFF.
9. INFORMATION SHOWN WAS OBTAINED FROM RECORD DRAWINGS AND WALK-THROUGHS AND IS INTENDED TO GIVE APPROXIMATE MAGNITUDE OF WORK. IT IS CONTRACTOR'S RESPONSIBILITY TO IDENTIFY ALL DEVICES AND SYSTEMS IN DEMOLITION AREA.

FLAG NOTES

- EXISTING TO REMAIN IN AREA SHOWN.
- EXISTING LIGHTING FIXTURES TO BE REMOVED. SEE LIGHTING SHEET FOR NEW FIXTURE TYPES. ALL WALL MOUNTED ELECTRICAL DEVICES TO REMAIN. MAINTAIN CIRCUIT CONTINUITY FOR ELECTRICAL WALL DEVICES.

SECOND FLOOR
K-WING
DEMOLITION PLAN -
ELECTRICAL

E1
22

Date 09-26-2008
Scale AS INDICATED
Drawn By JL
Job No. 4034