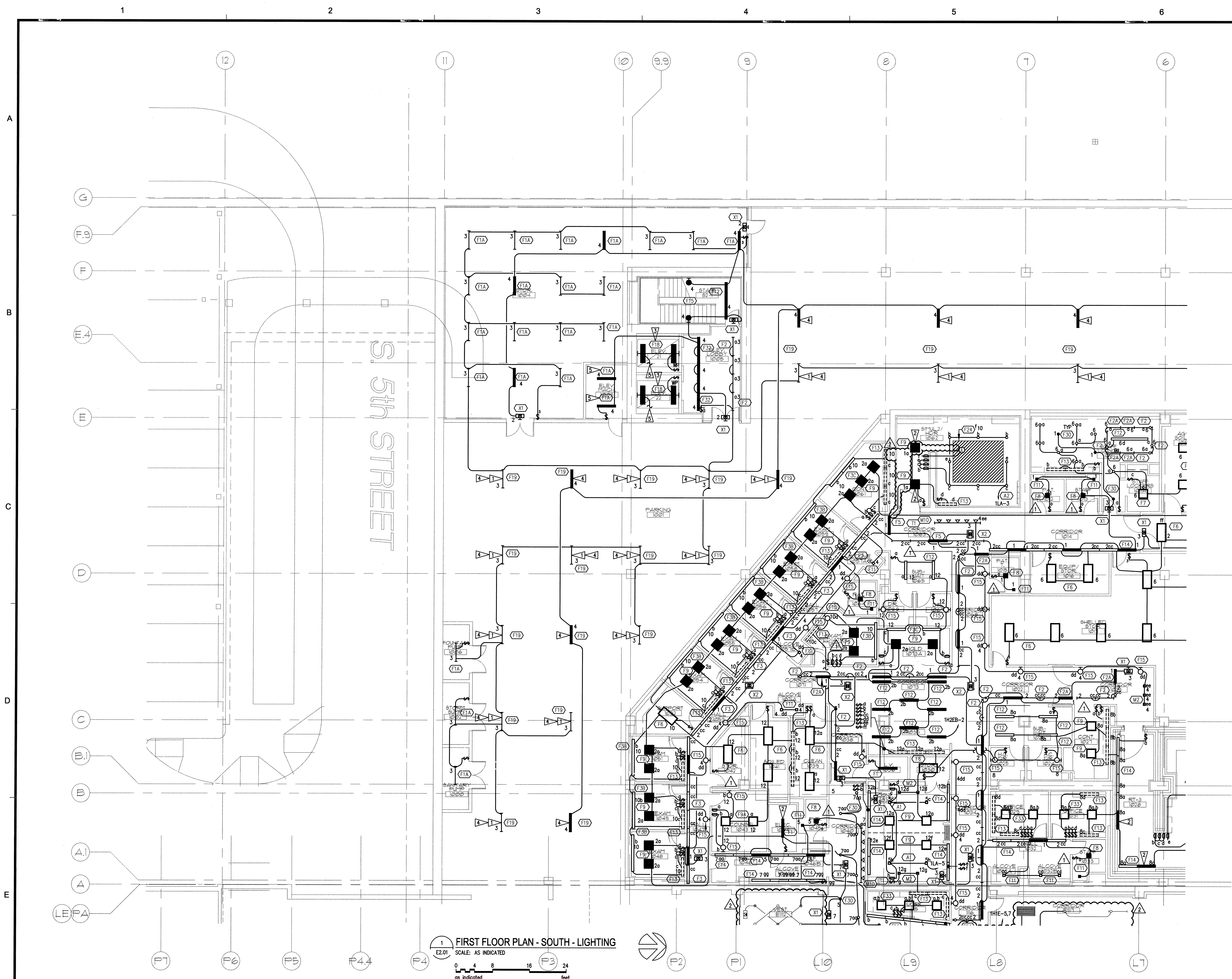


N:\13608\CADD-05\200_E2-01.DWG FEB 13, 2009 - 11:34:58 AM BY: TWHITE

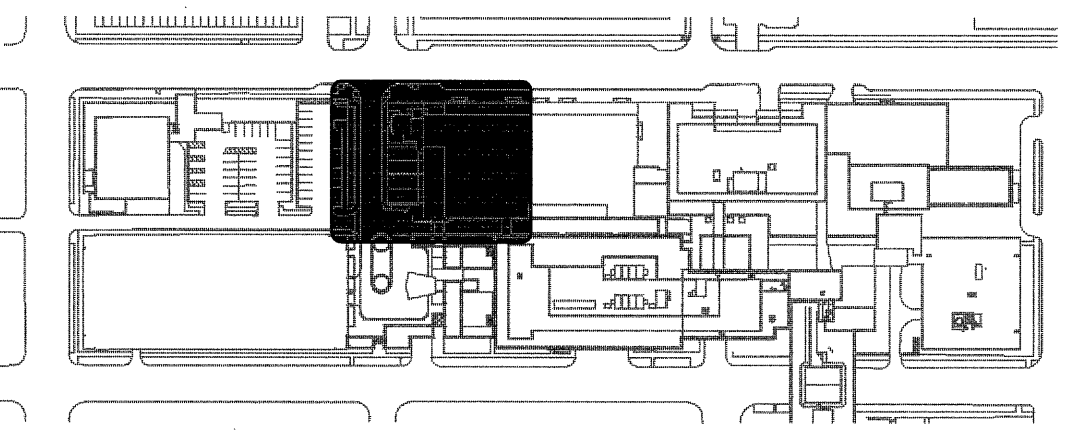


GENERAL NOTES

1. SEE ARCHITECTURAL REFLECTED CEILING PLANS FOR EXACT FIXTURE LOCATIONS.
2. SEE ARCHITECTURAL ELEVATIONS FOR MOUNTING HEIGHTS FOR WALL MOUNTED FIXTURES.
3. COORDINATE FIXTURE LOCATIONS IN AREAS WITH DUCTWORK AND PIPING WITH EXPOSED CEILINGS. ADJUST LOCATIONS AS REQUIRED FOR ACTUAL FIELD CONDITIONS.
4. SUPPORT LIGHTS IN ACCORDANCE WITH UBC 1632 AND 1634 SEISMIC ZONE REQUIREMENTS.
5. WHERE SWITCHES ARE SHOWN GROUPED, PROVIDE A COMMON BACKBOX WITH BARRIERS AS REQUIRED BY NEC AND COMMON SEAMLESS FACEPLATES.
6. IN ROOMS WITH 3-LAMP FIXTURES WHERE DUAL LEVEL SWITCHING IS INDICATED, CIRCUIT FIXTURE SUCH THAT ONE SWITCH CONTROLS THE INNER LAMP AND THE SECOND SWITCH CONTROLS THE OUTER LAMP.
7. PROVIDE DIMMING BALLAST(S) FOR FLUORESCENT FIXTURES SHOWN CONNECTED TO A DIMMING SWITCH DAYLIGHT SENSING PHOTOCELL.

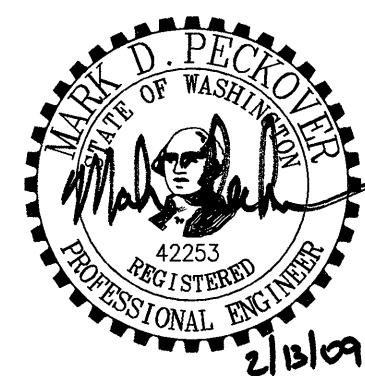
FLAG NOTES

- CONNECT COMPLETE TO EXTERIOR LIGHTING TIMECLOCK.
- PROVIDE EMERGENCY BATTERY BALLAST IN FIXTURE SHOWN.
- FIXTURE TYPE F18 LOCATED IN ELEVATOR PIT.
- MOUNT FIXTURE TYPE F19 TO ALIGN WITH BOTTOM OF BEAM IN PARKING GARAGE.
- COORDINATE EXACT FIXTURE PLACEMENT WITH EQUIPMENT.
- CONNECT COMPLETE TO ELEVATOR PIT RECEPTACLE. SEE E3.01 FOR CONTINUATION.



GIFFIN • BOLTE • JURGENS
ARCHITECTS

815 S.W. SECOND AVENUE • PORTLAND, OREGON 97204
(503) 223-0992 www.gbjarch.com FAX (503) 294-3961



MultiCare

EMERGENCY DEPARTMENT & CANCER CENTER EXPANSION

TACOMA, WASHINGTON

- 100% CD SET 9/26/08
- CCD #4 12/17/08
- CCD #7 2/20/09

Date 09-26-2008
Scale AS INDICATED
Drawn By JL
Job No. 4034

FIRST FLOOR
PLAN - SOUTH
LIGHTING

E2
01