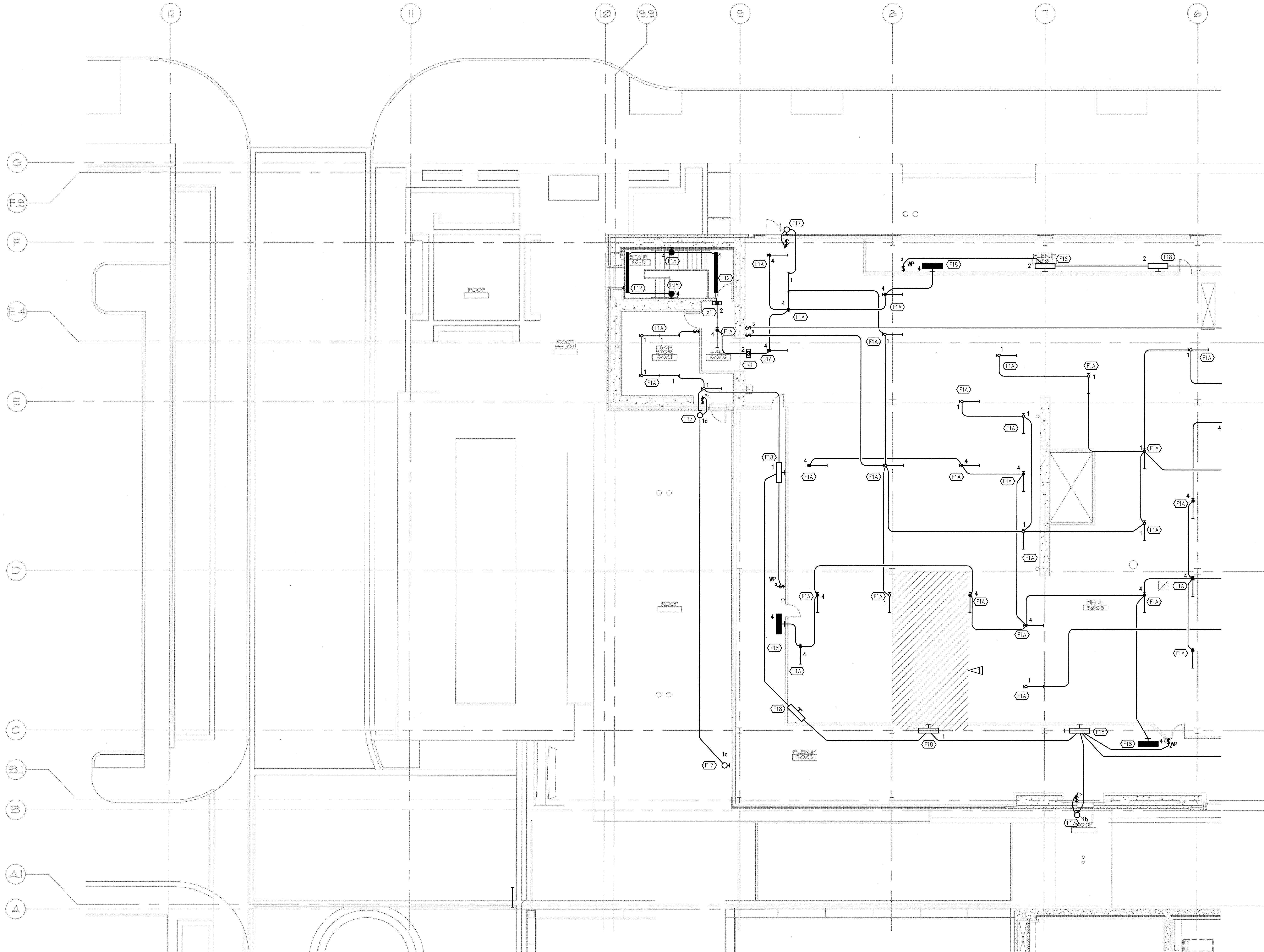
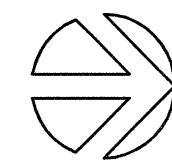


N:\B13608\CADD-05\211_E2-05.DWG SEP 25, 2008 - 11:41:07 AM BY: TWHITE

A
B
C
D
E



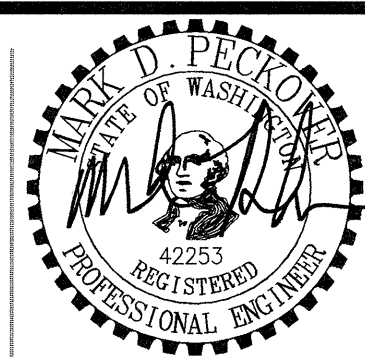
1 FIFTH FLOOR PLAN - SOUTH - LIGHTING
E2.05 SCALE: AS INDICATED
0 4 8 16 24
as indicated feet



SPARLING
ELECTRICAL ENGINEERING | TECHNOLOGY CONSULTING

GIFFIN • BOLTE • JURGENS
ARCHITECTS

815 S.W. SECOND AVENUE - PORTLAND, OREGON 97204
(503) 223-0992 www.gbjarch.com FAX (503) 294-3961



MultiCare
EMERGENCY DEPARTMENT & CANCER CENTER EXPANSION
TACOMA, WASHINGTON

Date 09-26-2008
Scale AS INDICATED
Drawn By JL
Job No. 4034

**FIFTH FLOOR
PLAN - SOUTH
LIGHTING**

**E2
05**

GENERAL NOTES

1. SEE ARCHITECTURAL REFLECTED CEILING PLANS FOR EXACT FIXTURE LOCATIONS.
2. SEE ARCHITECTURAL ELEVATIONS FOR MOUNTING HEIGHTS FOR WALL MOUNTED FIXTURES.
3. COORDINATE FIXTURE LOCATIONS IN AREAS WITH DUCTWORK AND PIPING WITH EXPOSED CEILINGS. ADJUST LOCATIONS AS REQUIRED FOR ACTUAL FIELD CONDITIONS.
4. SUPPORT LIGHTS IN ACCORDANCE WITH UBC 1632 AND 1634 SEISMIC ZONE REQUIREMENTS.
5. WHERE SWITCHES ARE SHOWN GROUPED, PROVIDE A COMMON BACKBOX WITH BARRIERS AS REQUIRED BY NEC AND COMMON SEAMLESS FACEPLATES.
6. IN ROOMS WITH 3-LAMP FIXTURES WHERE DUAL LEVEL SWITCHING IS INDICATED, CIRCUIT FIXTURE SUCH THAT ONE SWITCH CONTROLS THE INNER LAMP AND THE SECOND SWITCH CONTROLS THE OUTER LAMP.
7. PROVIDE DIMMING BALLAST(S) FOR FLUORESCENT FIXTURES SHOWN CONNECTED TO A DIMMING SWITCH DAYLIGHT SENSING PHOTOCELL.

FLAG NOTES

- ▶ REMOVABLE CEILING PARTITION FOR FUTURE MECHANICAL EQUIPMENT. AREA SHALL BE FREE FROM CONDUITS/CONDUCTORS AND ELECTRICAL DEVICES.

