

N:\B13608\CADD-05\207.E2-13.DWG DEC 16, 2009 - 11:46:05 AM BY: JLUO

A
B
C
D
E

1

2

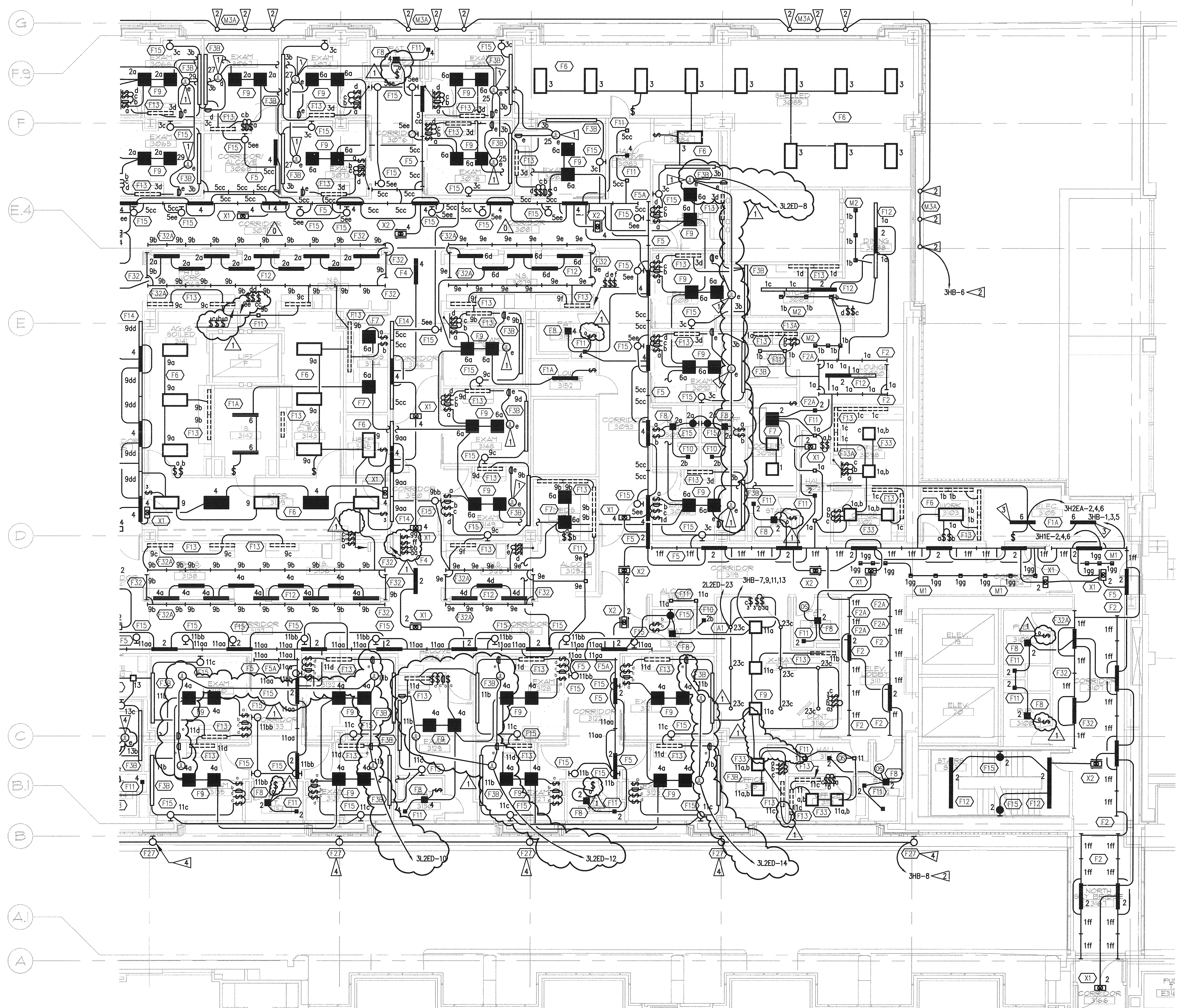
3

4

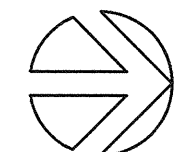
5

6

7



1 THIRD FLOOR PLAN - NORTH - LIGHTING
E2.13
SCALE: AS INDICATED
0 4 8 16 24
feet
as indicated

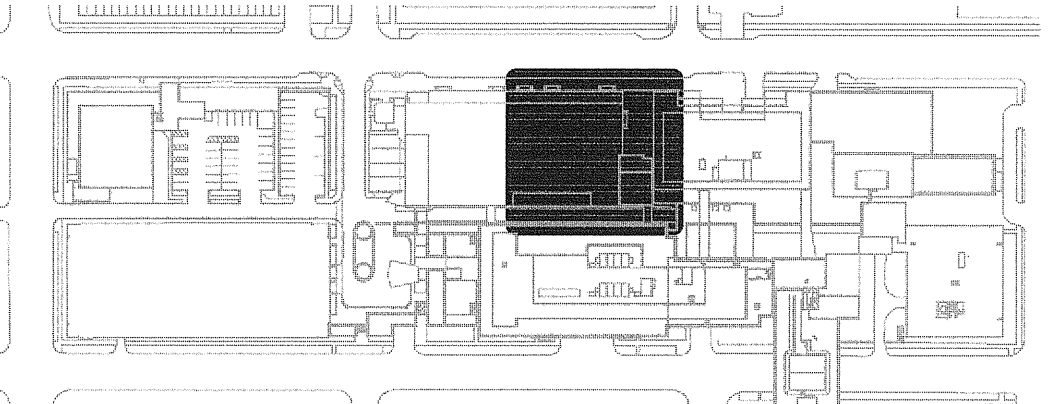


GENERAL NOTES

1. SEE ARCHITECTURAL REFLECTED CEILING PLANS FOR EXACT FIXTURE LOCATIONS.
2. SEE ARCHITECTURAL ELEVATIONS FOR MOUNTING HEIGHTS FOR WALL MOUNTED FIXTURES.
3. COORDINATE FIXTURE LOCATIONS IN AREAS WITH DUCTWORK AND PIPING WITH EXPOSED CEILINGS. ADJUST LOCATIONS AS REQUIRED FOR ACTUAL FIELD CONDITIONS.
4. SUPPORT LIGHTS IN ACCORDANCE WITH UBC 1632 AND 1634 SEISMIC ZONE REQUIREMENTS.
5. WHERE SWITCHES ARE SHOWN GROUPED, PROVIDE A COMMON BACKBOX WITH BARRIERS AS REQUIRED BY NEC AND COMMON SEAMLESS FACEPLATES.
6. IN ROOMS WITH 3-LAMP FIXTURES WHERE DUAL LEVEL SWITCHING IS INDICATED, GROUT FIXTURE SUCH THAT ONE SWITCH CONTROLS THE INNER LAMP AND THE SECOND SWITCH CONTROLS THE OUTER LAMP.
7. PROVIDE DIMMING BALLAST(S) FOR FLUORESCENT FIXTURES SHOWN CONNECTED TO A DIMMING SWITCH DAYLIGHT SENSING PHOTOCELL.

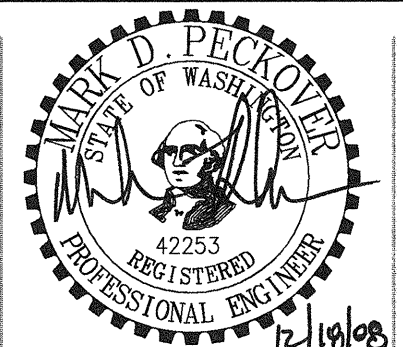
FLAG NOTES

- CONNECTION TO OWNER FURNISHED EXAM LIGHT.
- CONNECT COMPLETE TO EXTERIOR LIGHTING TIMECLOCK.
- PROVIDE EMERGENCY BATTERY BALLAST IN FIXTURE SHOWN.
- REFER TO ARCHITECTURAL DRAWINGS FOR MOUNTING AND ELEVATION.



GIFFIN • BOLTE • JURGENS
ARCHITECTS

815 S.W. SECOND AVENUE - PORTLAND, OREGON 97204
(503) 223-0992 www.gbjarch.com FAX (503) 294-3961



MultiCare
EMERGENCY DEPARTMENT & CANCER CENTER EXPANSION
TACOMA, WASHINGTON

100% CD SET 9/26/08
CCD #4 12/17/08

Date 09-26-2008
Scale AS INDICATED
Drawn By JL
Job No. 4034

THIRD FLOOR
PLAN - NORTH
LIGHTING

E2
13