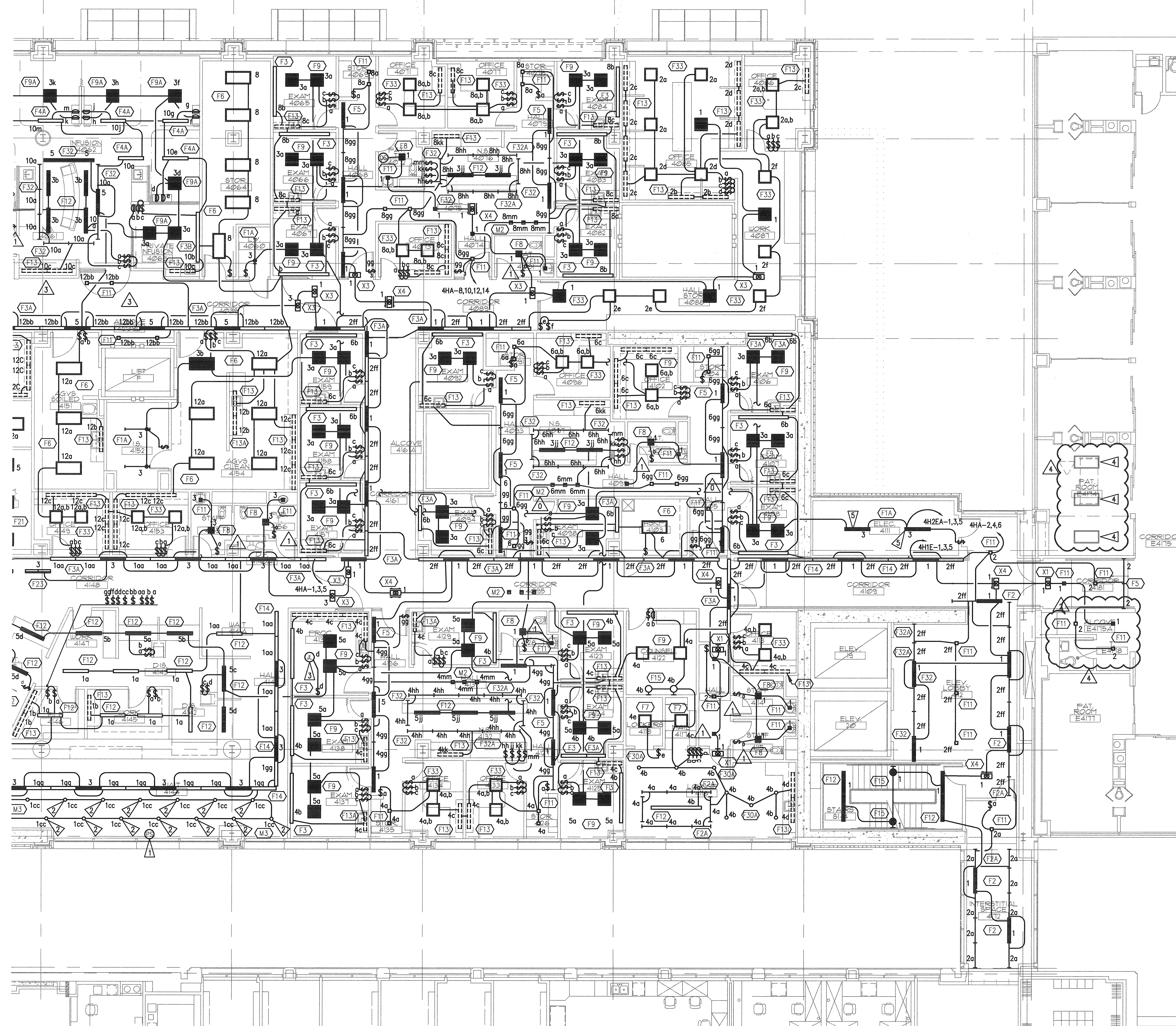


GENERAL NOTES

1. SEE ARCHITECTURAL REFLECTED CEILING PLANS FOR EXACT FIXTURE LOCATIONS.
2. SEE ARCHITECTURAL ELEVATIONS FOR MOUNTING HEIGHTS FOR WALL MOUNTED FIXTURES.
3. COORDINATE FIXTURE LOCATIONS IN AREAS WITH DUCTWORK AND PIPING WITH EXPOSED CEILINGS. ADJUST LOCATIONS AS REQUIRED FOR ACTUAL FIELD CONDITIONS.
4. SUPPORT LIGHTS IN ACCORDANCE WITH UBC 1632 AND 1634 SEISMIC ZONE REQUIREMENTS.
5. WHERE SWITCHES ARE SHOWN GROUPED, PROVIDE A COMMON BACKBOX WITH BARRIERS AS REQUIRED BY NEC AND COMMON SEAMLESS FACEPLATES.
6. IN ROOMS WITH 3-LAMP FIXTURES WHERE DUAL LEVEL SWITCHING IS INDICATED, CIRCUIT FIXTURE SUCH THAT ONE SWITCH CONTROLS THE INNER LAMP AND THE SECOND SWITCH CONTROLS THE OUTER LAMP.
7. PROVIDE DIMMING BALLAST(S) FOR FLUORESCENT FIXTURES SHOWN CONNECTED TO A DIMMING SWITCH DAYLIGHT SENSING PHOTOCELL.

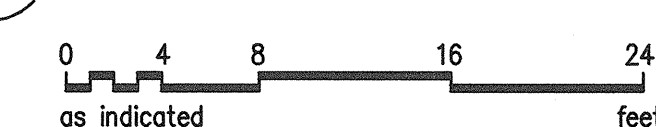
FLAG NOTES

- ▷ DAYLIGHTING PHOTOSENSOR.
- ▷ DAYLIGHTING CONTROL. CONNECT COMPLETE TO DAYLIGHTING PHOTOSENSOR FOR ON/OFF CONTROL.
- ▷ CONNECTION TO OWNER FURNISHED EXAM LIGHT.
- ▷ NOT USED.
- ▷ PROVIDE EMERGENCY BATTERY BALLAST IN FIXTURE SHOWN.
- IS - CONNECT COMPLETE EXISTING FIXTURES IN CIRCUIT SHOWN. RE-CONNECT TO EXISTING CRITICAL LIGHTING CIRCUIT AS THEY PRIOR TO RELOCATION.



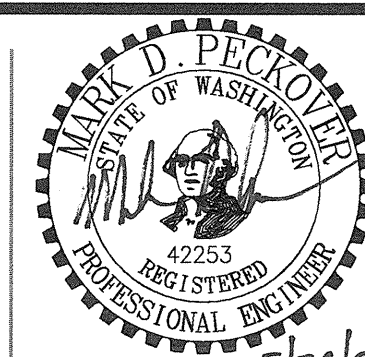
1 FOURTH FLOOR PLAN - NORTH - LIGHTING

E2.14 SCALE: AS INDICATED



GIFFIN • BOLTE • JURGENS *p.c.*
A R C H I T E C T S

815 S.W. SECOND AVENUE • PORTLAND, OREGON 97204



EMERGENCY DEPARTMENT & CANCER CENTER EXPANSION

MultiCare 

TACOMA, WASHINGTON

Date 09-26-2008

Scale AS INDICATED

Drawn By JL

Job No. 4034

FOURTH FLOOR
PLAN - NORTH
LIGHTING

E2
14