

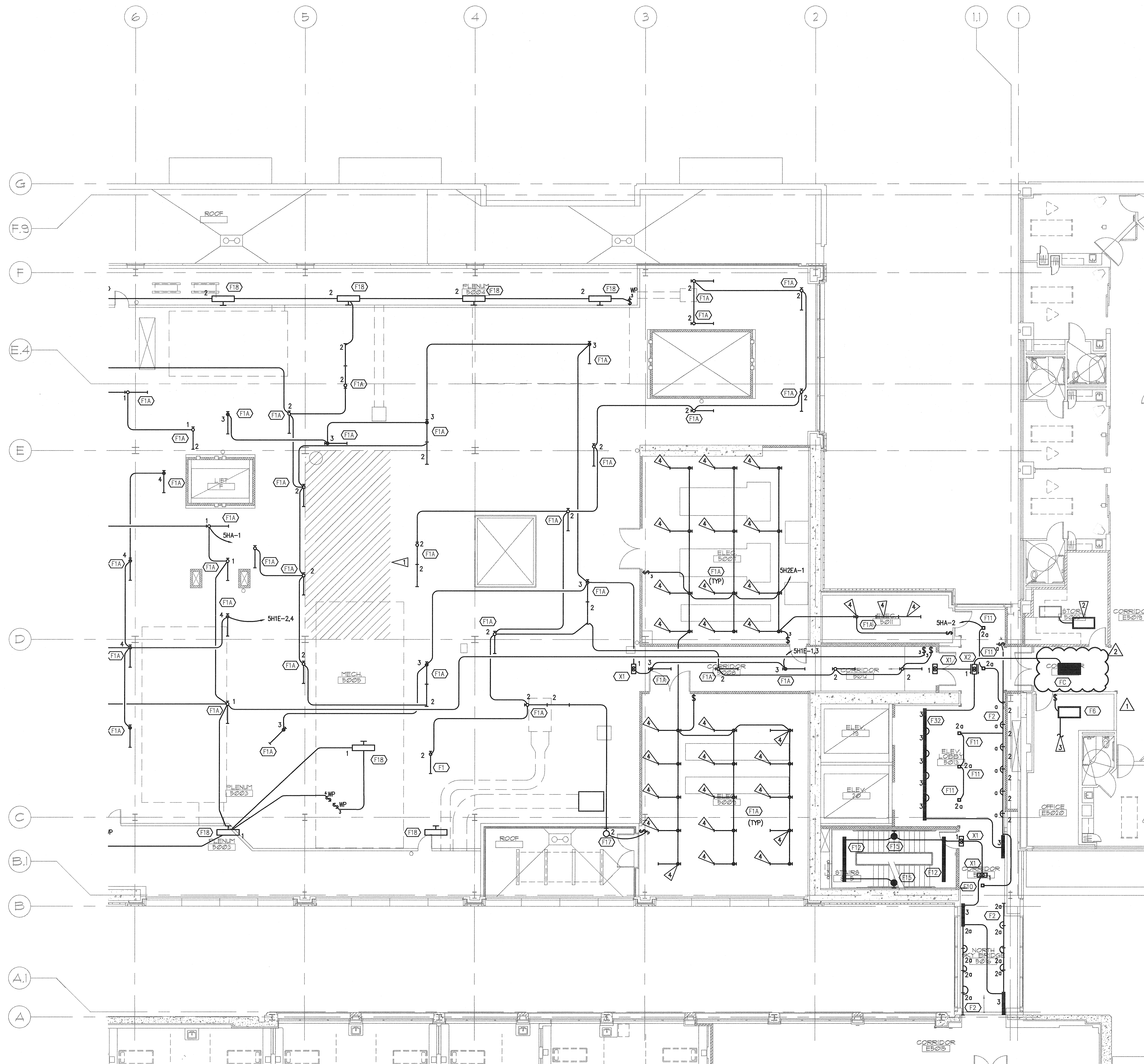
A

B

C

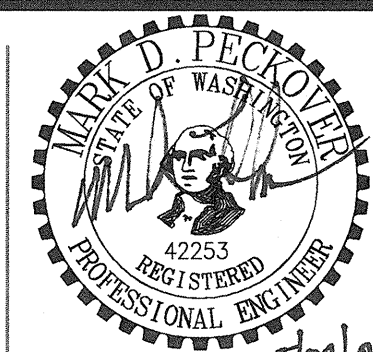
D

E



1 FIFTH FLOOR PLAN - NORTH - LIGHTING

SCALE: AS INDICATED

0 4 8 16 24  
feetGIFFIN • BOLTE • JURGENS  
ARCHITECTS815 S.W. SECOND AVENUE • PORTLAND, OREGON 97204  
(503) 223-0992 • www.gbjarch.com • FAX (503) 294-3961

5/20/09

MultiCare

EMERGENCY DEPARTMENT &amp; CANCER CENTER EXPANSION

TACOMA, WASHINGTON

100% CD SET 9/26/08  
 CCD #7 2/20/09  
 CCD #12 5/26/09

Date 09-26-2008  
 Scale AS INDICATED  
 Drawn By JL  
 Job No. 4034

FIFTH FLOOR  
PLAN - NORTH  
LIGHTINGE2  
15

## GENERAL NOTES

1. SEE ARCHITECTURAL REFLECTED CEILING PLANS FOR EXACT FIXTURE LOCATIONS.
2. SEE ARCHITECTURAL ELEVATIONS FOR MOUNTING HEIGHTS FOR WALL MOUNTED FIXTURES.
3. COORDINATE FIXTURE LOCATIONS IN AREAS WITH DUCTWORK AND PIPING WITH EXPOSED CEILINGS. ADJUST LOCATIONS AS REQUIRED FOR ACTUAL FIELD CONDITIONS.
4. SUPPORT LIGHTS IN ACCORDANCE WITH UBC 1632 AND 1634 SEISMIC ZONE REQUIREMENTS.
5. WHERE SWITCHES ARE SHOWN GROUPED, PROVIDE A COMMON BACKBOX WITH BARRIERS AS REQUIRED BY NEC AND COMMON SEAMLESS FACEPLATES.
6. IN ROOMS WITH 3-LAMP FIXTURES WHERE DUAL LEVEL SWITCHING IS INDICATED, CIRCUIT FIXTURE SUCH THAT ONE SWITCH CONTROLS THE INNER LAMP AND THE SECOND SWITCH CONTROLS THE OUTER LAMP.
7. PROVIDE DIMMING BALLAST(S) FOR FLUORESCENT FIXTURES SHOWN CONNECTED TO A DIMMING SWITCH DAYLIGHT SENSING PHOTOCELL.

## FLAG NOTES

- △ REMOVABLE CEILING PARTITION FOR FUTURE MECHANICAL EQUIPMENT. AREA SHALL BE FREE FROM CONDUITS/CONDUCTORS AND ELECTRICAL DEVICES.
- △ INSTALL EXISTING FIXTURE IN NEW LOCATION SHOWN. CONNECT COMPLETE TO THE SAME CIRCUIT IT WAS CONNECTED TO PRIOR TO DEMOLITION.
- △ CONNECT NEW SWITCH LEG TO EXISTING LIGHT FIXTURES IN OFFICE.
- △ PROVIDE EMERGENCY BATTERY BALLAST IN FIXTURE SHOWN.