

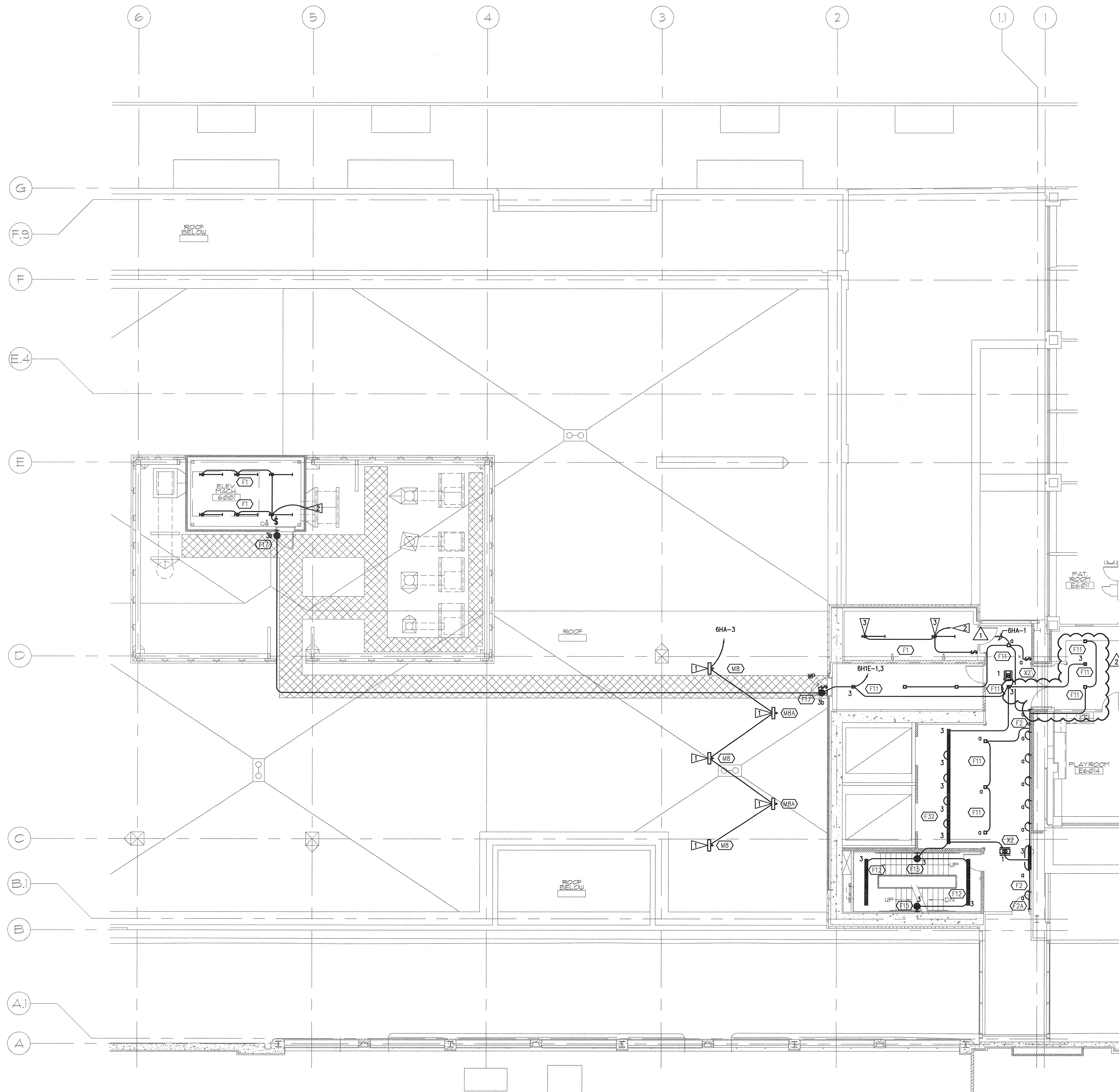
A

B

C

D

E



1 SIXTH FLOOR PLAN - NORTH - LIGHTING

SCALE: AS INDICATED

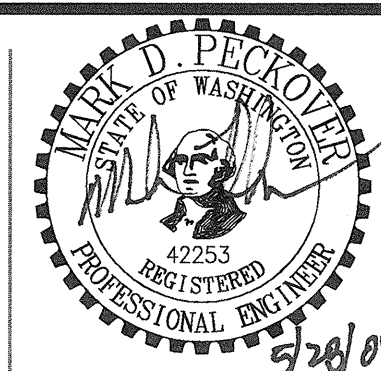
0 4 8 16 24  
as indicated feet

## GENERAL NOTES

1. SEE ARCHITECTURAL REFLECTED CEILING PLANS FOR EXACT FIXTURE LOCATIONS.
2. SEE ARCHITECTURAL ELEVATIONS FOR MOUNTING HEIGHTS FOR WALL MOUNTED FIXTURES.
3. COORDINATE FIXTURE LOCATIONS IN AREAS WITH DUCTWORK AND PIPING WITH EXPOSED CEILINGS. ADJUST LOCATIONS AS REQUIRED FOR ACTUAL FIELD CONDITIONS.
4. SUPPORT LIGHTS IN ACCORDANCE WITH UBC 1632 AND 1634 SEISMIC ZONE REQUIREMENTS.
5. WHERE SWITCHES ARE SHOWN GROUPED, PROVIDE A COMMON BACKBOX WITH BARRIERS AS REQUIRED BY NEC AND COMMON SEAMLESS FACEPLATES.
6. IN ROOMS WITH 3-LAMP FIXTURES WHERE DUAL LEVEL SWITCHING IS INDICATED, CIRCUIT FIXTURE SUCH THAT ONE SWITCH CONTROLS THE INNER LAMP AND THE SECOND SWITCH CONTROLS THE OUTER LAMP.
7. PROVIDE DIMMING BALLAST(S) FOR FLUORESCENT FIXTURES SHOWN CONNECTED TO A DIMMING SWITCH DAYLIGHT SENSING PHOTOCELL.

## FLAG NOTES

- CONNECT COMPLETE TO EXTERIOR LIGHTING CONTACTOR.
- CONNECT COMPLETE TO ELEVATOR MACHINE ROOM RECEPTACLE. SEE E3.16 FOR CONTINUATION.
- PROVIDE EMERGENCY BATTERY BALLAST IN FIXTURE SHOWN.

GIFFIN • BOLTE • JURGENS P.C.  
ARCHITECTS815 S.W. SECOND AVENUE • PORTLAND, OREGON 97204  
(503) 223-0992 www.gbjarch.com FAX (503) 294-3961MultiCare  
EMERGENCY DEPARTMENT & CANCER CENTER EXPANSION

TACOMA, WASHINGTON

- 100% CD SET 9/26/08
- CCD #4 12/17/08
- CCD #12 5/26/09

Date 09-26-2008  
Scale AS INDICATED  
Drawn By JL  
Job No. 4034SIXTH FLOOR  
PLAN - NORTH  
LIGHTINGE2  
16