

N:\B13608\CADD-05\2002_E2-32.DWG MAY 26, 2009 -- 4:02:19 PM BY: TWITE

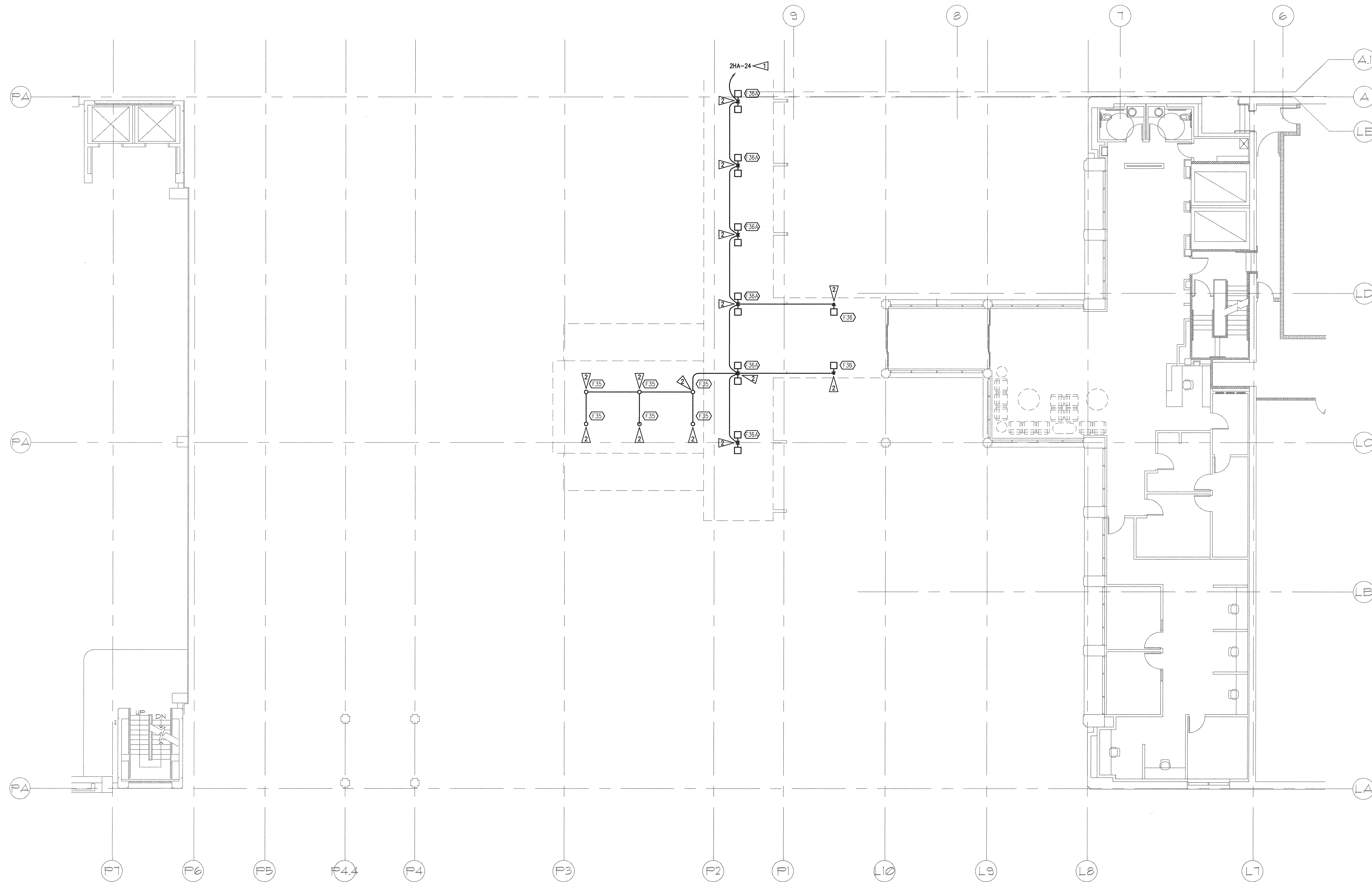
A

B

C

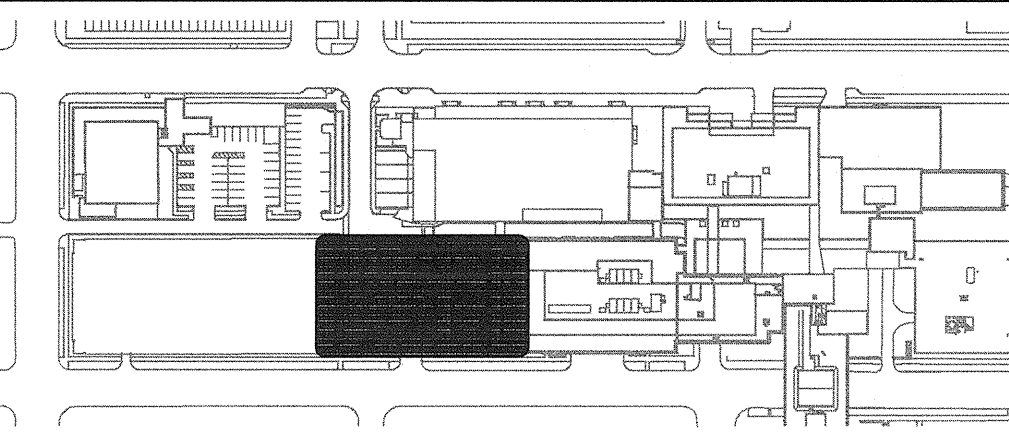
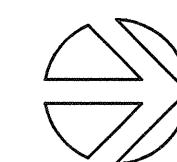
D

E



1 SECOND FLOOR PLAN - L-WING & PLAZA REMODEL - LIGHTING
E2.32 SCALE: AS INDICATED

0 4 8 16 24
as indicated feet



GENERAL NOTES

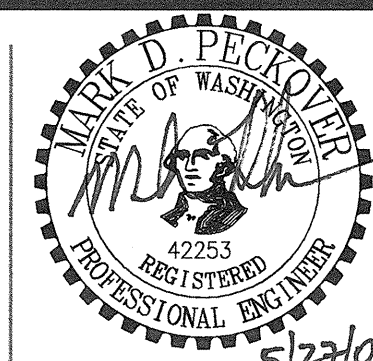
1. SEE ARCHITECTURAL REFLECTED CEILING PLANS FOR EXACT FIXTURE LOCATIONS.
2. SEE ARCHITECTURAL ELEVATIONS FOR MOUNTING HEIGHTS FOR WALL MOUNTED FIXTURES.
3. COORDINATE FIXTURE LOCATIONS IN AREAS WITH DUCTWORK AND PIPING WITH EXPOSED CEILINGS. ADJUST LOCATIONS AS REQUIRED FOR ACTUAL FIELD CONDITIONS.
4. SUPPORT LIGHTS IN ACCORDANCE WITH UBC 1632 AND 1634 SEISMIC ZONE REQUIREMENTS.
5. WHERE SWITCHES ARE SHOWN GROUPED, PROVIDE A COMMON BACKBOX WITH BARRIERS AS REQUIRED BY NEC AND COMMON SEAMLESS FACEPLATES.
6. IN ROOMS WITH 3-LAMP FIXTURES WHERE DUAL LEVEL SWITCHING IS INDICATED, CIRCUIT FIXTURE SUCH THAT ONE SWITCH CONTROLS THE INNER LAMP AND THE SECOND SWITCH CONTROLS THE OUTER LAMP.
7. PROVIDE DIMMING BALLAST(S) FOR FLUORESCENT FIXTURES SHOWN CONNECTED TO A DIMMING SWITCH DAYLIGHT SENSING PHOTOCELL.

FLAG NOTES

- CONNECT COMPLETE TO EXTERIOR LIGHTING TIME CLOCK.
- COORDINATE EXACT LOCATION AND MOUNTING METHOD WITH ARCHITECT PRIOR TO ROUGH-IN.

GIFFIN • BOLTE • JURGENS P.C.
ARCHITECTS

815 S.W. SECOND AVENUE, PORTLAND, OREGON 97204
(503) 223-0992 www.gbjarch.com FAX (503) 294-3961



MultiCare
EMERGENCY DEPARTMENT & CANCER CENTER EXPANSION

TACOMA, WASHINGTON

Date 05-26-2009
Scale AS INDICATED
Drawn By JL
Job No. 4034

SECOND FLOOR
PLAN - L-WING &
PLAZA REMODEL -
LIGHTING

E2
32