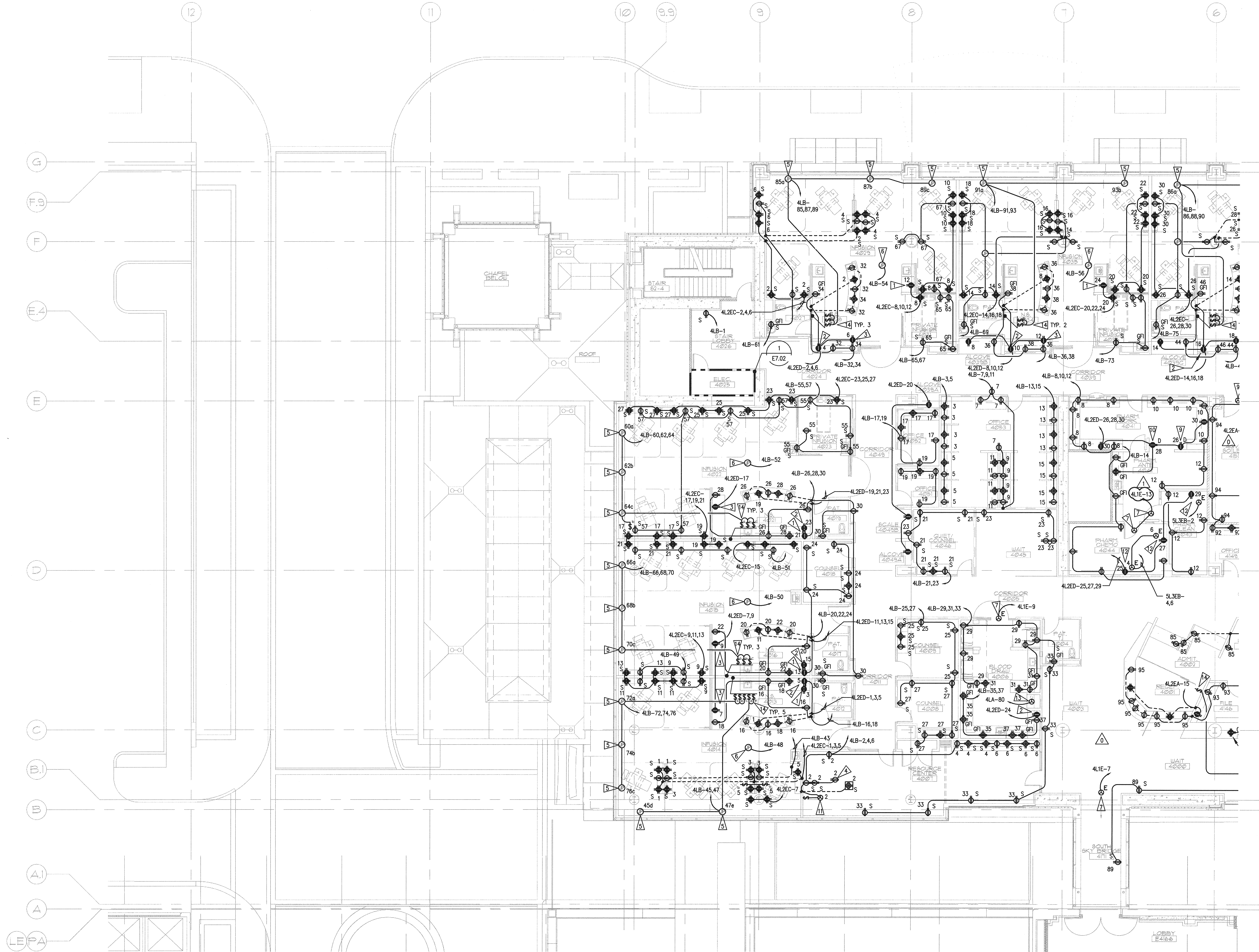


N:\B13608\CADD-05\308_E3-04.DWG DEC 18, 2008 - 11:43:11 AM BY: JLUO

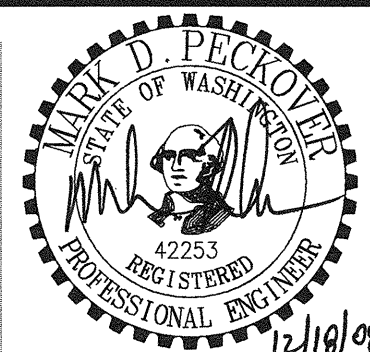
A
B
C
D
E



1 FOURTH FLOOR PLAN - SOUTH - POWER
E3.04 SCALE: AS INDICATED

GIFFIN • BOLTE • JURGENS
ARCHITECTS

813 S.W. SECOND AVENUE • PORTLAND, OREGON 97204
(503) 223-0992 www.gbjarch.com FAX (503) 294-3961



MultiCare
EMERGENCY DEPARTMENT & CANCER CENTER EXPANSION
TACOMA, WASHINGTON

100% CD SET 9/26/08
CCD #4 12/17/08

Date 09-26-2008
Scale AS INDICATED
Drawn By JL
Job No. 4034

FOURTH FLOOR
PLAN - SOUTH
POWER

E3
04

GENERAL NOTES

- SEE ARCHITECTURAL PLANS, SECTIONS AND ELEVATIONS FOR EXACT EQUIPMENT AND DEVICE LOCATIONS, INCLUDING MOUNTING HEIGHTS.
- PROVIDE RED DEVICES AND COVERPLATES FOR DEVICES SERVED FROM EMERGENCY POWER SYSTEM.
- SEE ARCHITECTURAL PLANS FOR LOCATIONS OF SOUND, SMOKE AND FIRE RATED WALLS.
- ABOVE COUNTER RECEPTACLES LOCATED WITHIN 5' OF SINK SHALL BE GFI RATED.
- SEE MECHANICAL DRAWINGS FOR EXACT LOCATION OF MECHANICAL EQUIPMENT. COORDINATE WITH MECHANICAL CONTRACTOR PRIOR TO ROUGH-IN.

FLAG NOTES

- PIVIX CONNECTION
- UNDER-COUNTER REFRIGERATOR CONNECTION.
- BLANKET WARMER CONNECTION.
- MOUNT RECEPTACLE IN ACCESSIBLE CEILING SPACE FOR CEILING MOUNTED PROJECTOR.
- PROVIDE HARD-WIRED CONNECTION FOR ROLLER SHADE MOTOR. COORDINATE EXACT LOCATION WITH ARCHITECT PRIOR TO ROUGH-IN.
- PROVIDE LOW VOLTAGE TRANSFORMER POWER SUPPLY FOR PATIENT TELEHEALTH TV'S. PROVIDE ALL INTERCONNECTING CONDUIT AND WIRING.
- PROVIDE HARD WIRED CONNECTION TO AUTO-DOOR MOTOR. PROVIDE ALL REQUIRED CONDUIT, WIRING AND ELECTRICAL DOOR HARDWARE. CONFIRM REQUIREMENTS WITH ARCHITECTURAL DOOR HARDWARE SCHEDULE.
- NOT USED.
- PHARMACY FREEZER CONNECTION.
- PHARMACY REFRIGERATOR CONNECTION.
- PROVIDE HARD WIRED CONNECTION TO PROJECTOR SCREEN MOTOR.
- PHARMACY BIOLOGICAL SAFETY CABINET CONNECTION. CONFIRM HOOD EXHAUST ELECTRICAL REQUIREMENTS WITH MECHANICAL PLANS PRIOR TO ROUGH IN.
- PROVIDE HARD WIRED CONNECTION TO PNEUMATIC TUBE DIVERTER. CONFIRM EXACT LOCATION AND ELECTRICAL REQUIREMENTS WITH SITE SPECIFIC VENDOR DRAWINGS.
- ROLLER SHADE SWITCH IS PROVIDED BY VENDOR, INSTALLED BY DIVISION 26. COORDINATE BOX SIZE AND CONDUCTOR TERMINATION REQUIREMENTS WITH MANUFACTURER PRIOR TO ROUGH-IN. COORDINATE EXACT SWITCH LOCATION WITH ARCHITECT.