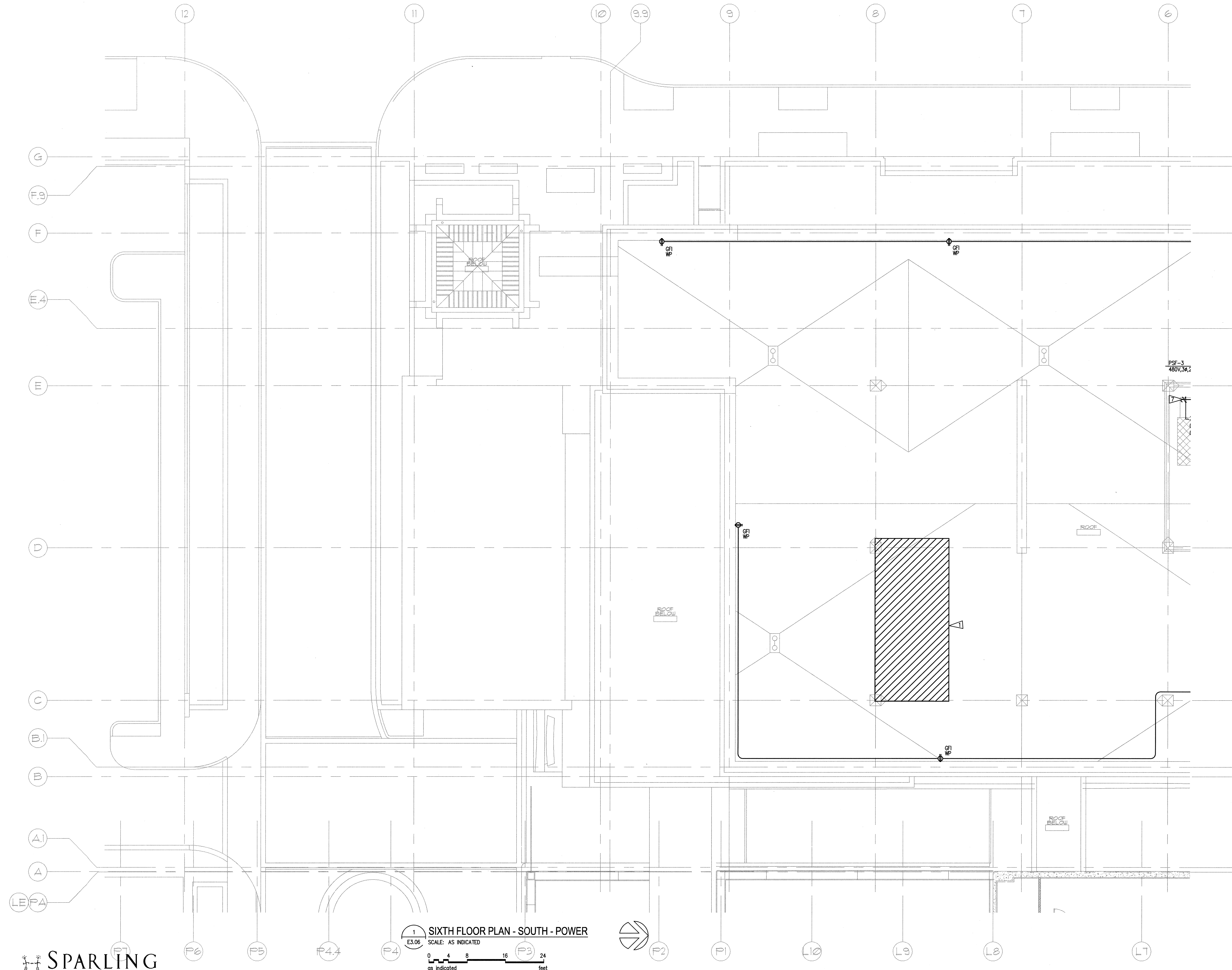


N:\13608\CADD-05\113_LE3-06.DWG SEP 25, 2008 - 11:37:51 AM BY: WHITE

A
B
C
D
E
F



GENERAL NOTES

1. SEE MECHANICAL DRAWINGS FOR EXACT LOCATION OF MECHANICAL EQUIPMENT. COORDINATE WITH MECHANICAL CONTRACTOR PRIOR TO ROUGH-IN.
2. SEE MECHANICAL DRAWINGS FOR EXACT LOCATION OF ALL EQUIPMENT.
3. PROVIDE FUSES SIZED PER EQUIPMENT MANUFACTURER'S RECOMMENDATION. FIELD VERIFY EQUIPMENT NAMEPLATE OVER CURRENT AND DISCONNECT REQUIREMENTS PRIOR TO EQUIPMENT CONNECTION.
4. MOUNT ALL DISCONNECTS AND STARTERS INDEPENDENT OF MECHANICAL EQUIPMENT IN A READILY ACCESSIBLE LOCATION. COORDINATE EXACT LOCATIONS WITH FINAL EQUIPMENT LAYOUT AND ORIENTATION.
5. ALL ELECTRICAL EQUIPMENT ON ROOF SHALL BE WEATHERPROOF.
6. ALL PENETRATIONS IN SUPPORT OF ELECTRICAL CIRCUITRY OR EQUIPMENT SUPPORT SHALL MATCH THOSE REQUIRED AND DETAILED BY THE ARCHITECT. COORDINATE AS REQUIRED PRIOR TO ROUGH-IN.
7. ALL WIRING TO ROOFTOP RECEPTACLES SHALL BE #10 AWG UNLESS OTHERWISE NOTED.
8. SURFACE MOUNTED WIRING ON ROOF IS PROHIBITED. ALL WIRING TO BE ROUTED IN CEILING SPACE BELOW ROOF.

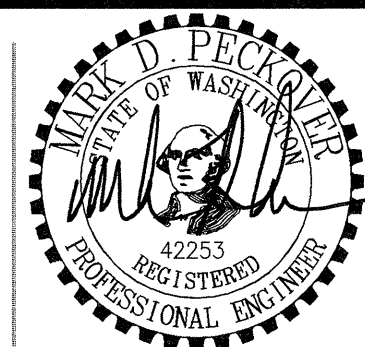
FLAG NOTES

- ▷ REMOVABLE HATCH FOR FUTURE AIR HANDLER. CONDUIT RUNS SHALL NOT BE PERMITTED WITHIN THIS BOUNDARY.

SPARLING
ELECTRICAL ENGINEERING | TECHNOLOGY CONSULTING

SIXTH FLOOR PLAN - SOUTH - POWER
SCALE: AS INDICATED
0 4 8 16 24
as indicated feet

GIFFIN • BOLTE • JURGENS p.c.
ARCHITECTS
815 S.W. SECOND AVENUE • PORTLAND, OREGON 97204
(503) 223-0992 www.gbjarch.com FAX (503) 294-3961



MultiCare
EMERGENCY DEPARTMENT & CANCER CENTER EXPANSION
TACOMA, WASHINGTON

Date 09-26-2008
Scale AS INDICATED
Drawn By JL
Job No. 4034

**SIXTH FLOOR
PLAN - SOUTH
POWER**

**E3
06**