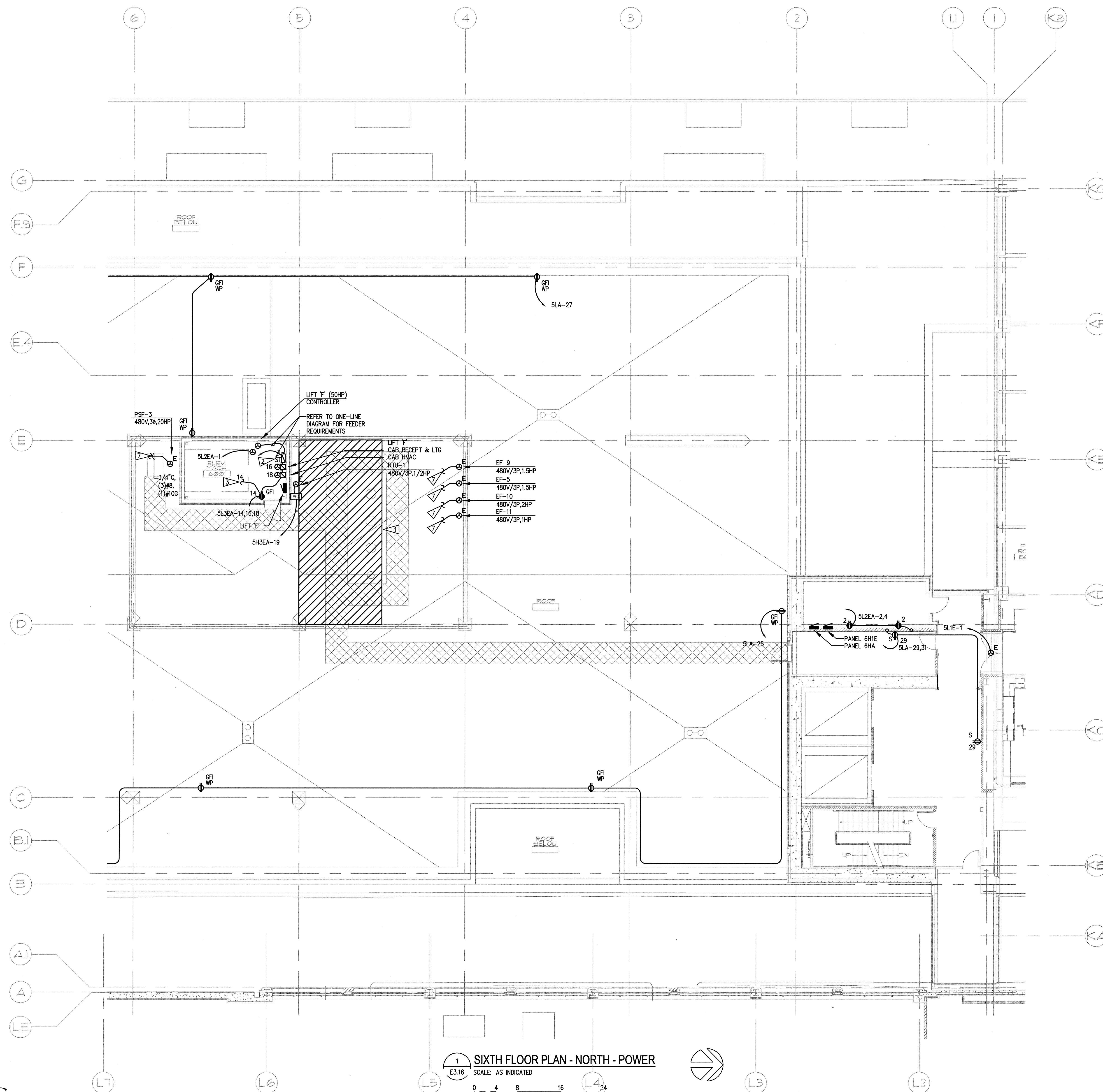


GENERAL NOTES

1. SEE MECHANICAL DRAWINGS FOR EXACT LOCATION OF MECHANICAL EQUIPMENT. COORDINATE WITH MECHANICAL CONTRACTOR PRIOR TO ROUGH-IN.
2. SEE MECHANICAL DRAWINGS FOR EXACT LOCATION OF ALL EQUIPMENT.
3. PROVIDE FUSES SIZED PER EQUIPMENT MANUFACTURER'S RECOMMENDATION. FIELD VERIFY EQUIPMENT NAMEPLATE OVER CURRENT AND DISCONNECT REQUIREMENTS PRIOR TO EQUIPMENT CONNECTION.
4. MOUNT ALL DISCONNECTS AND STARTERS INDEPENDENT OF MECHANICAL EQUIPMENT IN A READILY ACCESSIBLE LOCATION. COORDINATE EXACT LOCATIONS WITH FINAL EQUIPMENT LAYOUT AND ORIENTATION.
5. ALL ELECTRICAL EQUIPMENT ON ROOF SHALL BE WEATHERPROOF.
6. ALL PENETRATIONS IN SUPPORT OF ELECTRICAL CIRCUITRY OR EQUIPMENT SUPPORT SHALL MATCH THOSE REQUIRED AND DETAILED BY THE ARCHITECT. COORDINATE AS REQUIRED PRIOR TO ROUGH-IN.
7. ALL WIRING TO ROOFTOP RECEPTACLES SHALL BE #10 AWG UNLESS OTHERWISE NOTED.
8. SURFACE MOUNTED WIRING ON ROOF IS PROHIBITED. ALL WIRING TO BE ROUTED IN CEILING SPACE BELOW ROOF.

FLAG NOTES

- ▷ REMOVABLE HATCH FOR FUTURE AIR HANDLER. CONDUIT RUNS SHALL NOT BE PERMITTED WITHIN THIS BOUNDARY.
- ▷ PROVIDE SHUNT TRIP MOLDED CASE CIRCUIT BREAKER. REFER TO DETAIL 5/EB.00 FOR ADDITIONAL REQUIREMENTS AND INFORMATION.
- ▷ CONNECT CIRCUIT TO ELEVATOR MACHINE ROOM LIGHTING. DO NOT CONNECT LIGHTING TO LOAD SIDE OF GFI PROTECTION.
- ▷ VFD PROVIDED BY DIVISION 23. CONTRACTOR SHALL PROVIDE AND MAKE ALL REQUIRED INTERCONNECTIONS.
- ▷ PROVIDE HARD WIRED CONNECTION TO AUTO-DOOR MOTOR. PROVIDE ALL REQUIRED CONDUIT, WIRING AND ELECTRICAL DOOR HARDWARE. CONFIRM REQUIREMENTS WITH ARCHITECTURAL DOOR HARDWARE SCHEDULE.
- ▷ AGVS CONTROL PANEL CONNECTION COORDINATE WITH AGVS DRAWINGS AND ARCHITECT PRIOR TO ROUGH-IN.
- ▷ ROUTE TO EXHAUST FAN CONNECTION ON 5TH FLOOR AND CONNECT COMPLETE. SEE DRAWING E3.15.



1 SIXTH FLOOR PLAN - NORTH - POWER

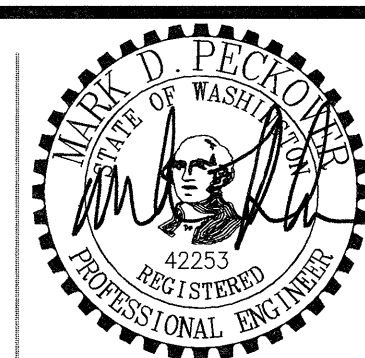
E3.16 SCALE: AS INDICATED

0 4 8 16 24
as indicated feet

SPARLING
ELECTRICAL ENGINEERING | TECHNOLOGY CONSULTING

GIFFIN • BOLTE • JURGENS
ARCHITECTS

815 S.W. SECOND AVENUE - PORTLAND, OREGON 97204
(503) 223-0992 www.gbjarch.com FAX (503) 294-3961



MultiCare

EMERGENCY DEPARTMENT & CANCER CENTER EXPANSION

TACOMA, WASHINGTON

Date 09-26-2008
Scale AS INDICATED
Drawn By JL
Job No. 4034

**SIXTH FLOOR
PLAN - NORTH
POWER**

**E3
16**